

# RAIL

*MOVING AMERICA FORWARD*



## ***Who We Are***



U.S. Department of Transportation  
Federal Railroad Administration



[www.fra.dot.gov](http://www.fra.dot.gov)

# We Are **FRA**

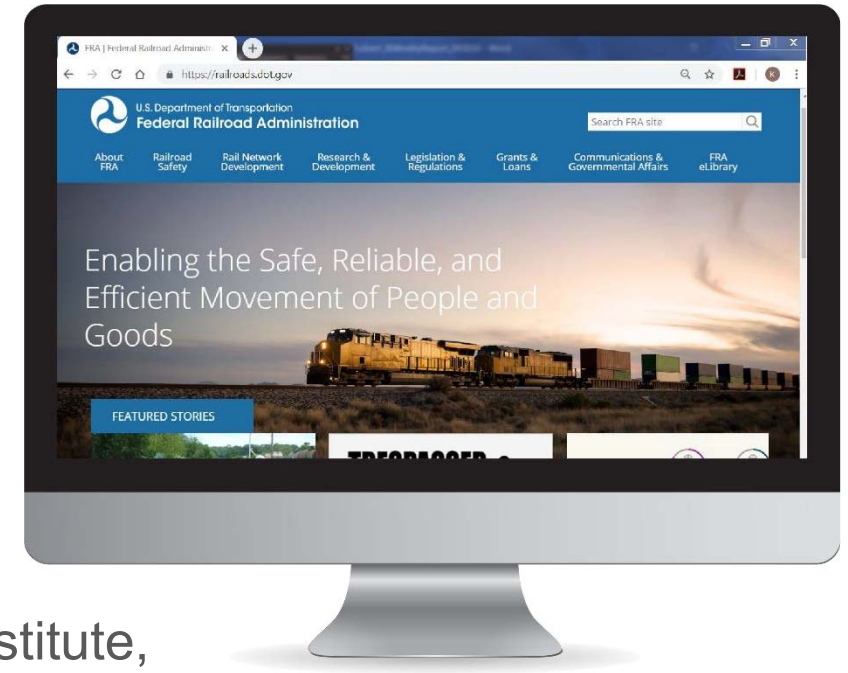
## Mission:

- The mission of the Federal Railroad Administration (FRA) is to enable the safe, reliable, and efficient movement of people and goods for a strong America, now and in the future.

Vision: [RAIL– Moving America Forward](#)

**Priority:** Rail safety is in everything we develop, plan, institute, and practice moving America forward safely. In addition, supporting departmental goals.

- Reducing and eliminating risk is paramount to enhancing safety across the rail industry; and supporting and contributing to the U.S Department of Transportation's overall strategic goals: Safety, Innovation, Infrastructure, and Accountability

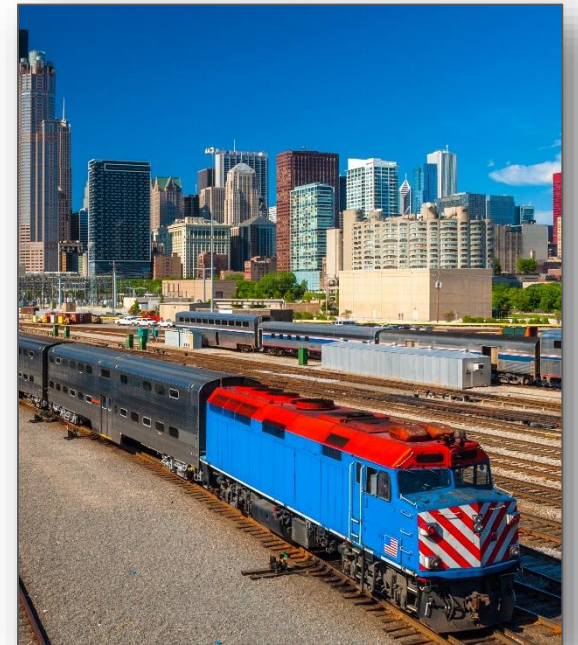


# Our **Focus**

## *Working together for rail safety*

*Establishing strong and enduring partnerships that foster a safe railroad operating environment nationwide as we focus on:*

- **REGULATORY OVERSIGHT** – Through data-driven inspections, audits, investigations, and special emphasis programs.
- **PERFORMANCE-BASED DATA** – Continuing a rigorous oversight and inspection program effectively utilizing performance-based data for productive decision-making and accountability.
- **INNOVATION** – Sponsoring and conducting research to support development and implementation of innovative technologies that improve safety, efficiency and reliability.
- **INVESTMENTS** – Maximizing benefits from capital investments.





# Our Core *Values*

## **SAFETY**

- *Safety* is part of everything the FRA does. Reducing and eliminating risk is essential to ensure safety across the rail industry.

## **INNOVATION**

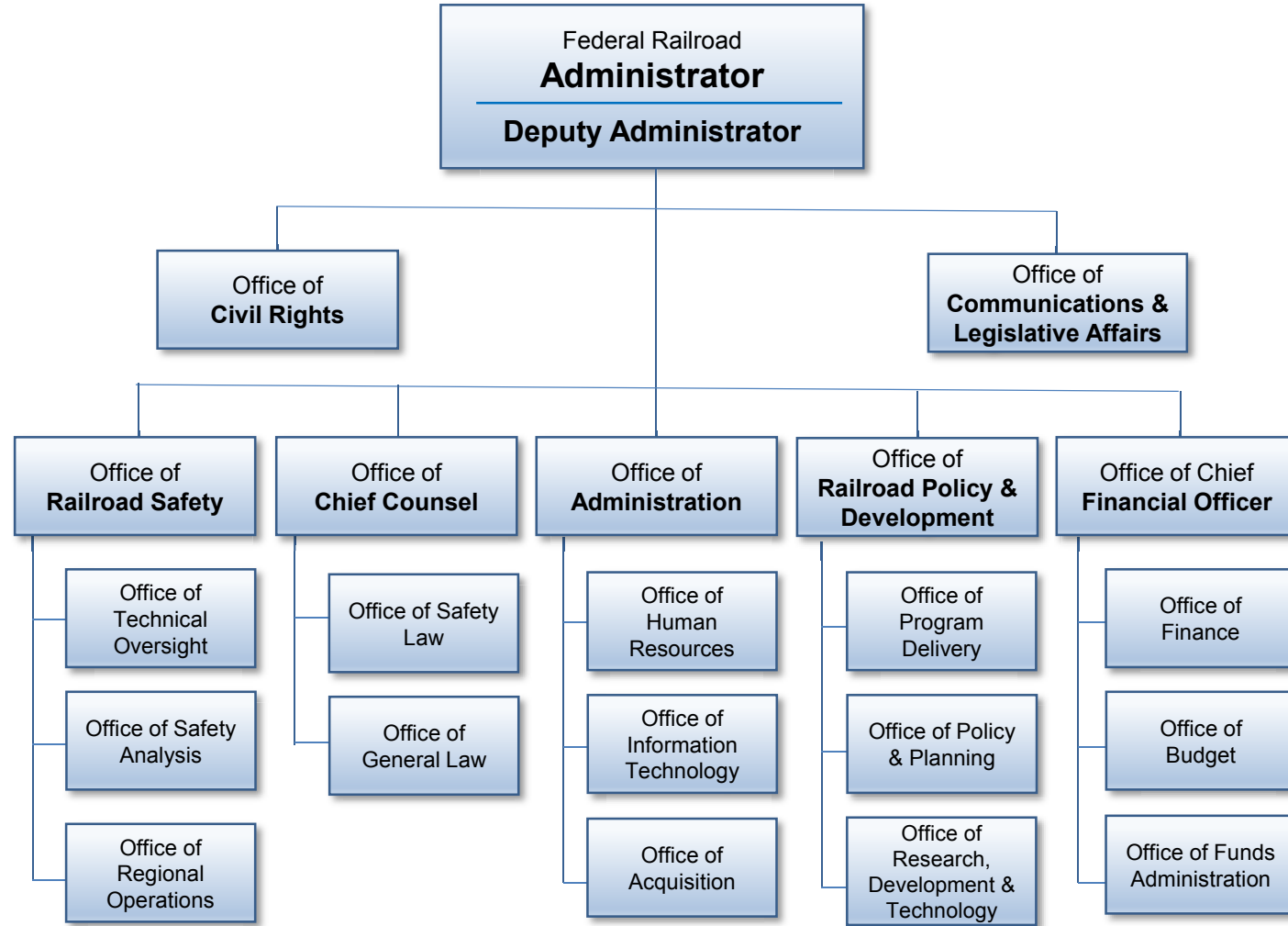
- *Innovation* is vital to advancing railroad efficiency and reliability.

## **ACCOUNTABILITY**

- *Accountability* is key value, deeply embedded in our organizational culture.



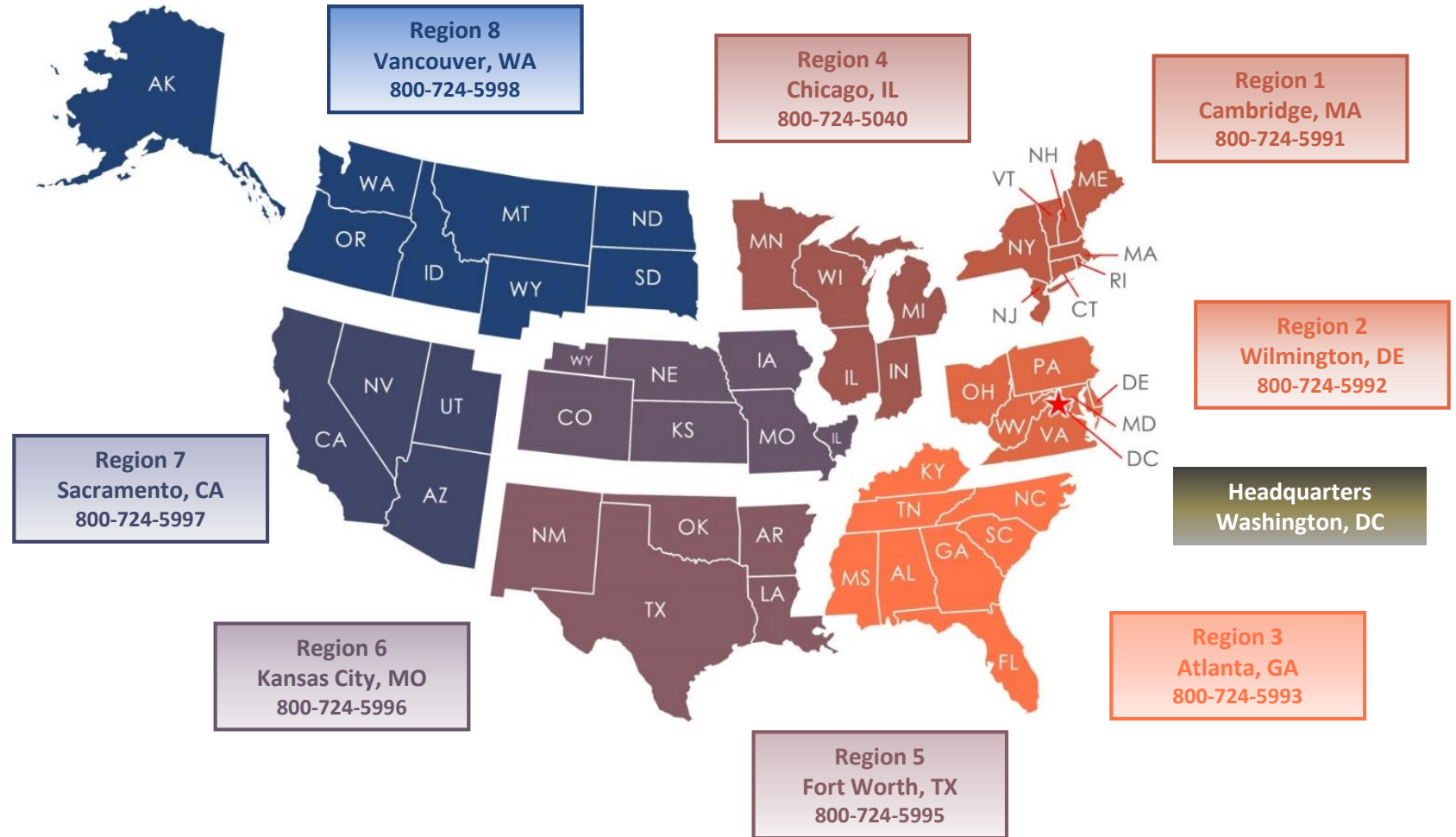
# Federal Railroad Administration



# Regional Safety Offices

## SAFETY NEVER SLEEPS

FRA's eight regional offices are continuously vigilant in ensuring the safe transport of goods and people across the country.



# Safety is Our Number One Priority

## Using Data to Drive Decision-Making and Actions

Every regulation issued and enforcement action taken is based on performance-based data, factual evidence and sound research.

- Over the past decade, train accidents have declined 7 percent
- Highway-rail grade crossing collisions have increased 11 percent
- Employee fatalities have declined by 15 percent



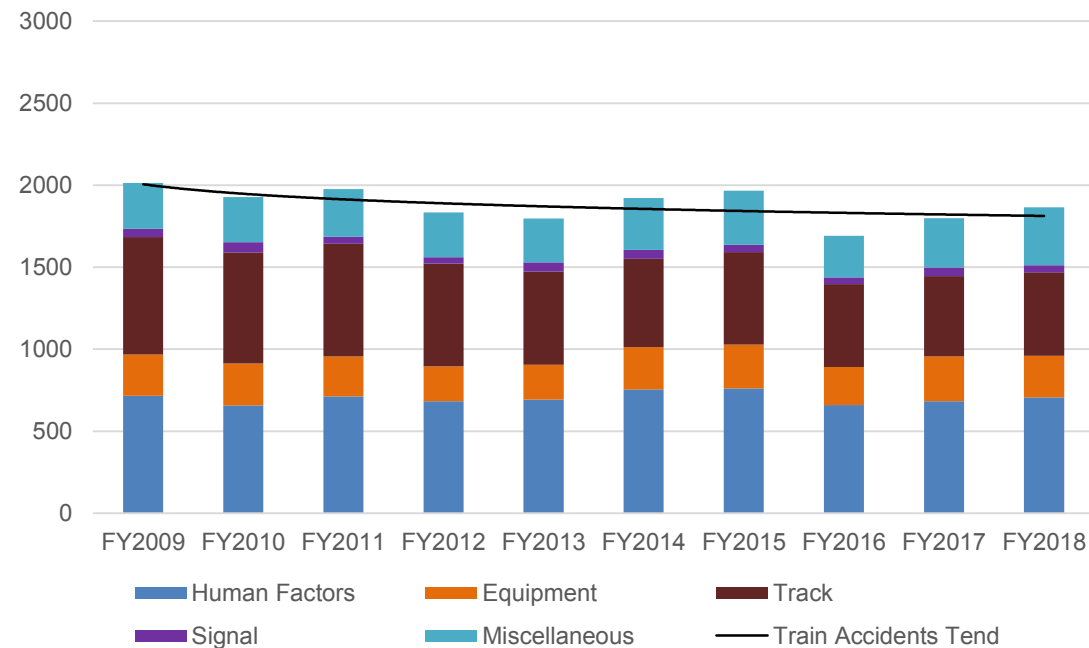
### Ten-Year Trend for Accident Reductions

\*Fiscal Year Representing Absolute Numbers

Source: FRA

### Ten-year Trend for Train Accidents (FY09 -FY18)

\*Fiscal Year Representing Absolute Numbers



# *Safety is Our Number One Priority (continued)*

## **FRA'S SIGNIFICANT SAFETY IMPLEMENTATIONS:**

### **Preventive Actions – Reduces Accidents, Risks, and More**

- Ensuring Railroad Implementation of Positive Train Control (PTC)
- Highway-Rail Grade Crossing Safety Program
- Trespass Prevention Safety Program
- HAZMAT Transportation/Tank Car Safety
- Risk Reduction/System Safety/Confidential Close Call Reporting System (C3RS)
- Passenger Equipment Safety Standards
- Control of Alcohol and Drug Use Standards & Regulations
- Hours of Service of Railroad Employees
- Railroad Bridge Safety Oversight
- Waivers, Approvals, and Oversight of Technology Implementation



# Passenger Rail Safety Oversight

## *FRA's Role Related to AMTRAK, Rail Passenger Service*

### **Amtrak is congressionally chartered** (*Rail Passenger Service Act of 1970*)

- For-profit corporation; independent for purposes of day-to-day operations
- Federal government exercises long-term control
- Reliant, in part, on annual federal and state appropriations

### **Amtrak operates a nationwide passenger rail network, including:**

- Higher-speed, high frequency Northeast Corridor services
- State-supported short distance corridor service in heavily populated regions
- Long-distance services connecting rural areas and distant population centers

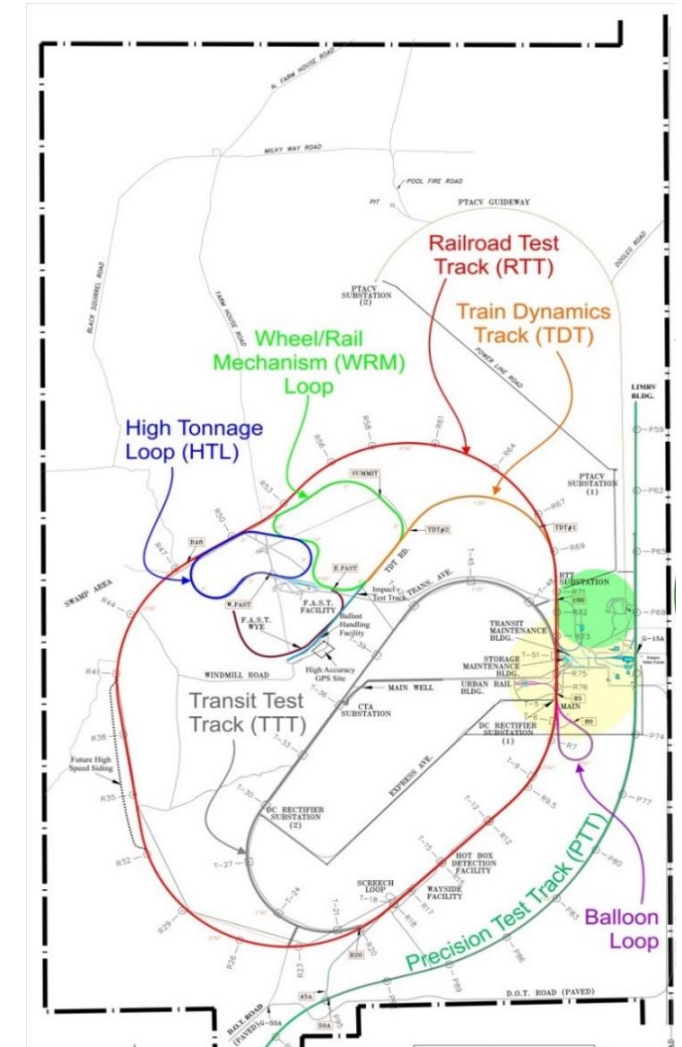
### **FRA's Role**

- Administers Amtrak's Grants for operating, capital, and debt obligations
- Oversees Amtrak's performance; inspects safety compliance; and provides technical assistance and standards



# Innovation for the Future

- Since FY 2006, Congress has appropriated approximately \$40 million annually for FRA's research, development, and technology program.
- The FRA Transportation Technology Center (TTC) in Pueblo, Colorado plays an important part in research, development, and testing of rail infrastructure and equipment.
- Approximately 25% of FRA's annual RD&T investment goes to TTC.



# FRA Areas of Research

## TRACK

- **FOCUS:** To develop technologies to improve track inspection and monitoring
- Track and infrastructure failure is the leading cause of train derailments in the United States.
- Another common cause of derailment is incorrect interaction between moving vehicles and the track.

## ROLLING STOCK

- **FOCUS:** To prevent derailments, equipment failure, and undesired emergency brake applications
- Other integral research areas are risk assessment and mitigation, along with support for safety assurance.

## TRAIN CONTROL & COMMUNICATION

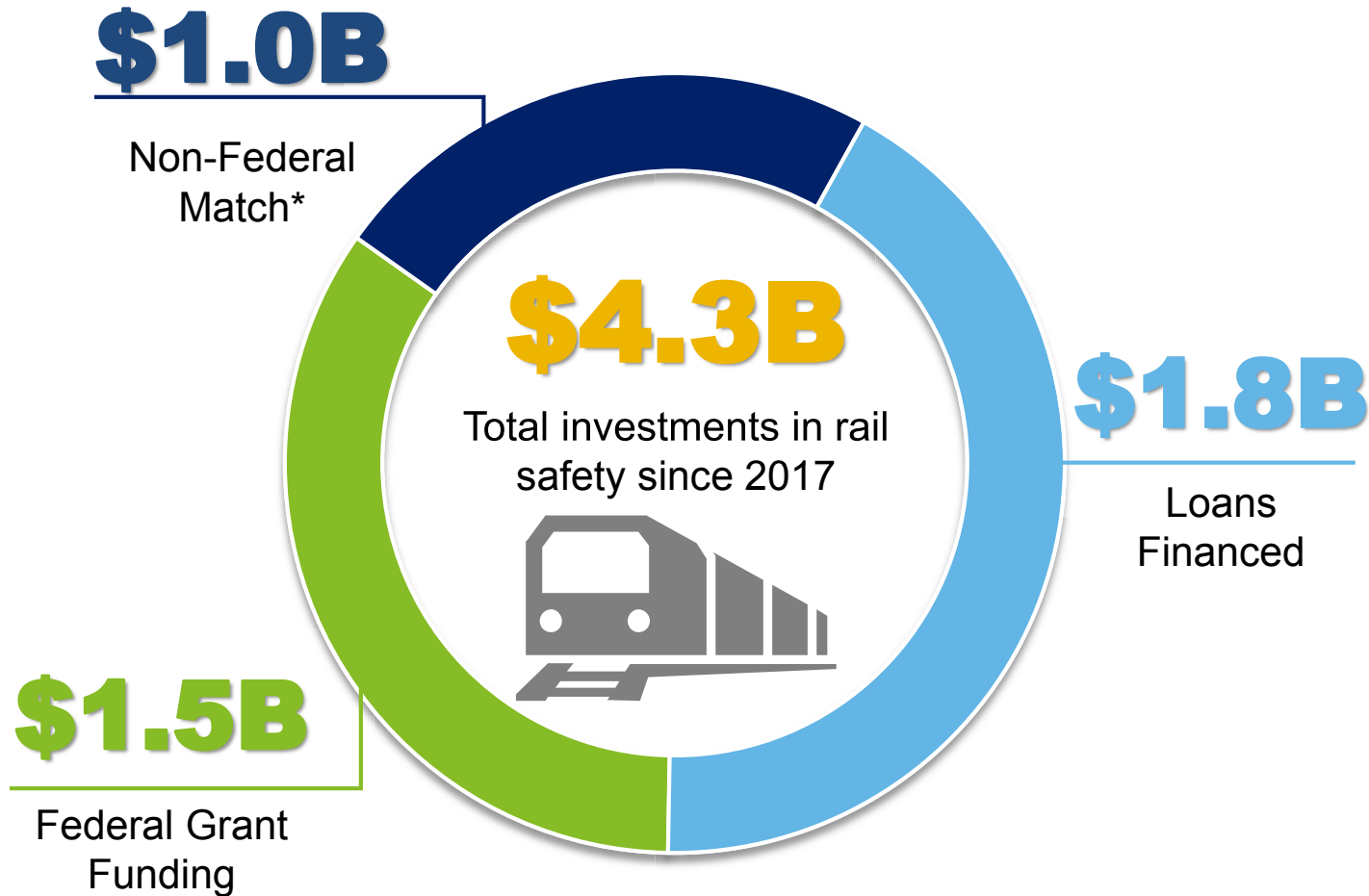
- **FOCUS:** To develop Intelligent Railroad Systems
- Systems will incorporate new sensor, computer, and digital communications technologies into train control, braking systems, grade crossings, and defect detection; also will integrate into planning and scheduling systems.

## HUMAN FACTORS

- **FOCUS:** To conduct research into automation, fatigue, distraction, and ergonomics
- Also conduct pilot trials to improve safety and organizational culture in railroad organizations.
- Human errors account for more than one third of all train accidents in the U.S. railroad industry.

# Overview of Funding Activity During the Trump Administration

FRA has demonstrated its commitment to rail safety by investing in priority projects focused on Positive Train Control (PTC), Grade Crossing (GX), and more.



## Priority Project Investments



**PTC**

**40**

Total Projects from  
Jan 2017 to Aug 2019

**\$250.3M**

Total Federal Funding  
for PTC projects



**GX**

**38**

Total Projects from  
Jan 2017 to Aug 2019

**\$260.6M**

Total Federal Funding  
for GX projects\*\*



# Guiding Principles

- **INTEGRITY.** The highest standards of ethical conduct will guide our stewardship of the public's trust and resources.
- **EXCELLENCE.** We will empower employees to focus time and resources on data-driven, cost-effective solutions that promote FRA mission accomplishments. We seek ongoing development of our knowledge base and skills. We will exhibit professional behavior at all times.
- **TRANSPARENCY AND ACCOUNTABILITY.** Senior leadership will engage employees in robust dialogue and constructive communication. We will embrace open decision-making. Our reward and recognition system will hold each of us responsible for our performance.
- **INNOVATION.** We will become an enterprising, resilient organization that invests in the future, as it streamlines and improves current operations.
- **ENGAGEMENT.** We will engage our stakeholders for creative problem solving and development of effective policies, programs, technology, and investments.
- **SAFETY.** We will strive to ensure the safety of our employees, the public, and the rail industry workforce.



# CONTACT US

Federal Railroad Administration  
1200 New Jersey Avenue, SE  
Washington, DC 20590

For more information visit us at  
[www.fra.dot.gov](http://www.fra.dot.gov)



Connect with us **USDOTFRA**