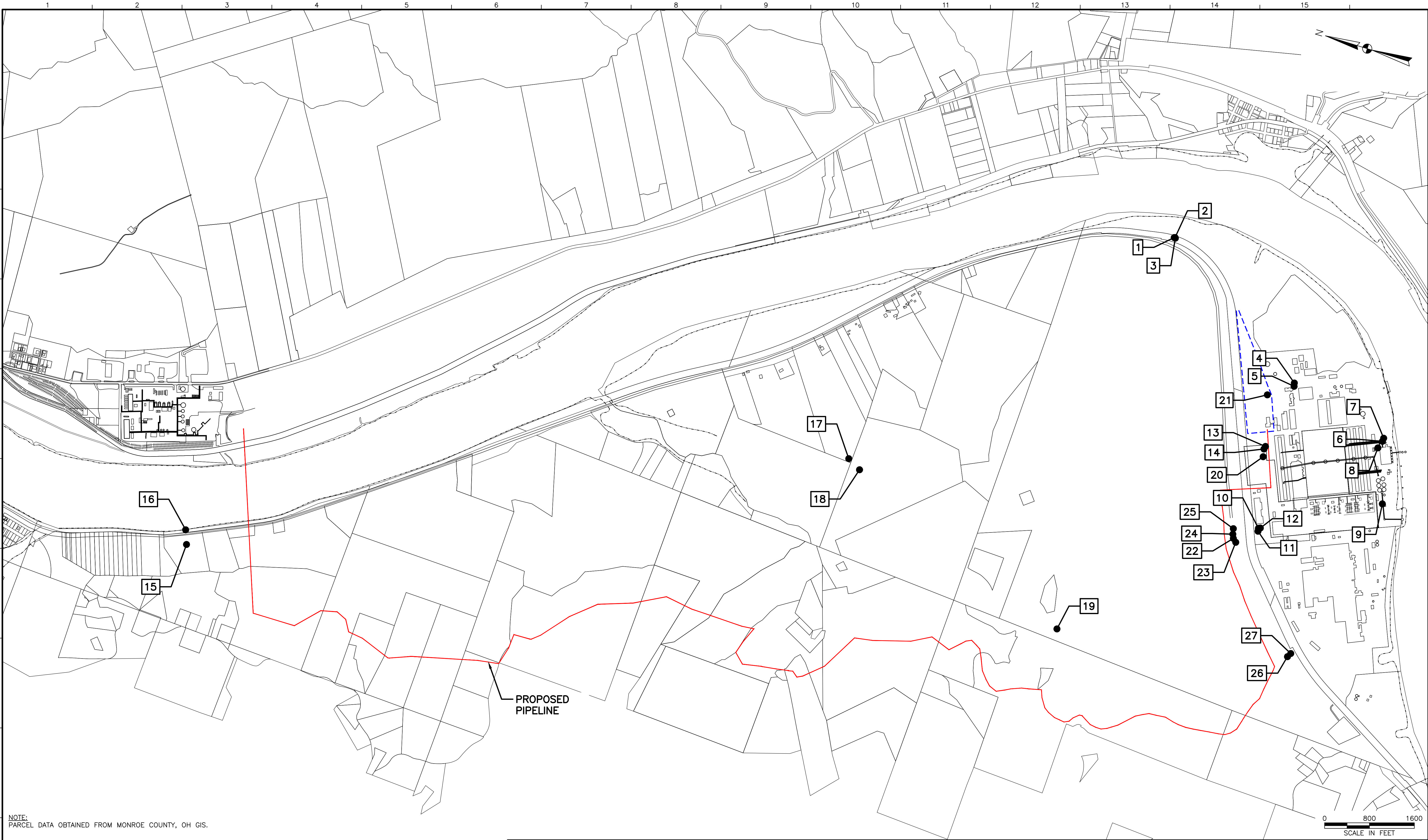

APPENDIX G

PHOTO LOG



NOTE:
PARCEL DATA OBTAINED FROM MONROE COUNTY, OH GIS.

LEGEND

- PROPOSED PIPELINE
- PROPOSED TRANSLOAD FACILITY
- PHOTOGRAPH NUMBER



www.tetrattech.com
6715 TIPPECANOE ROAD, SUITE C201
CANFIELD, OH 44406
T: (330) 286-3683 | F: (330) 286-3573

MARK	DATE	DESCRIPTION	BY

APPALACHIAN NGL HUB RAIL TRANSLOADING FACILITY
MONROE COUNTY, OHIO

PHOTO LOCATION MAP

DATE:	07/02/19
PROJECT NO.:	212C-CF-00264
DESIGNED BY:	JZ
DRAWN BY:	JZ
CHECKED BY:	LD
SHEET:	- OF -
COPYRIGHT TETRA TECH INC.	
FIG. APP. G	



Photograph 1: View across railroad tracks and route 7 and Longridge entrance, looking east.



Photograph 2: Looking north along railroad tracks at main Longridge entrance.



Photograph 3: Looking south along railroad tracks at main Longridge entrance.



Photograph 4: View to the north, towards RR switch.



Photograph 5: View to the SE along the railroad loop.



Photograph 6: View to the NE towards alumina bins. Photo shows bins and overhead belts. All else has been salvaged.



Photograph 7: View to the NE, with power lines on hill, blue tank from current drilling. Shown is the approximate path of pipeline downhill.



Photograph 8: View to the SW, showing terminus of alumina belt.



Photograph 9: View to the NW at the rolling mills. Note location of water tank.



Photograph 10: Location of rail joining the main line. View to NW.



Photograph 11: View to the NW. Pickup truck on Route 7. Power lines show approximate path of pipeline.



Photograph 12: View to the NE. Power lines. Approximate path of pipeline.



Photograph 13: View approximately N70E. Administration buildings on right. Parking lot in distance is approximate location of transload facility.



Photograph 14: View approximately S70W, view towards building and railroad juncture.



Photograph 15: View approximately N70E, view across Rt. 7, railroad tracks, Ohio River towards Blue Racer facility, where pipeline would cross Ohio River.



Photograph 16: View N70E on the banks of the Ohio River towards the Blue Racer facility and approximate location of pipeline crossing Ohio River.



Photograph 17: View N10W, across Opossum Creek outlet into the Ohio River.



Photograph 18: View N30W, across Opossum Creek towards oil and gas disturbance.



Photograph 19: View to south across drill pad.



Photograph 20: View to N70W, towards powerlines and path of proposed pipeline.



Photograph 21: View to the east towards tanks and superfund site beyond.



Photograph 22: View to the south towards the rolling mills, photo taken on Rt. 7.



Photograph 23: View to the SW, along Rt. 7.



Photograph 24: View of the powerlines and approximate path of pipeline.
View to the north.



Photograph 25: View approximately N60E along Rt. 7, photo taken from roadside.



Photograph 26: View along Rt. 7, N50E.



Photograph 27: View to S30E towards plant and across railroad tracks.