

# RAIL

*MOVING AMERICA FORWARD*



## ***Who We Are***

# We Are **FRA**

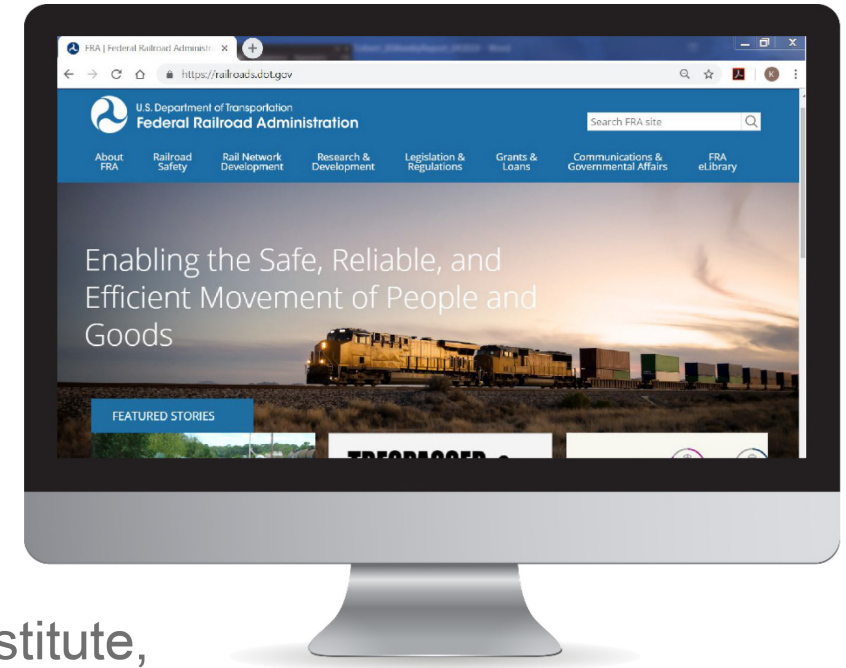
## Mission:

- The mission of the Federal Railroad Administration (FRA) is to enable the safe, reliable, and efficient movement of people and goods for a strong America, now and in the future.

Vision: [RAIL— Moving America Forward](#)

**Priority:** Rail safety is in everything we develop, plan, institute, and practice moving America forward safely. In addition, supporting departmental goals.

- Reducing and eliminating risk is paramount to enhancing safety across the rail industry; and supporting and contributing to the U.S Department of Transportation's overall strategic goals: Safety, Innovation, Infrastructure, and Accountability

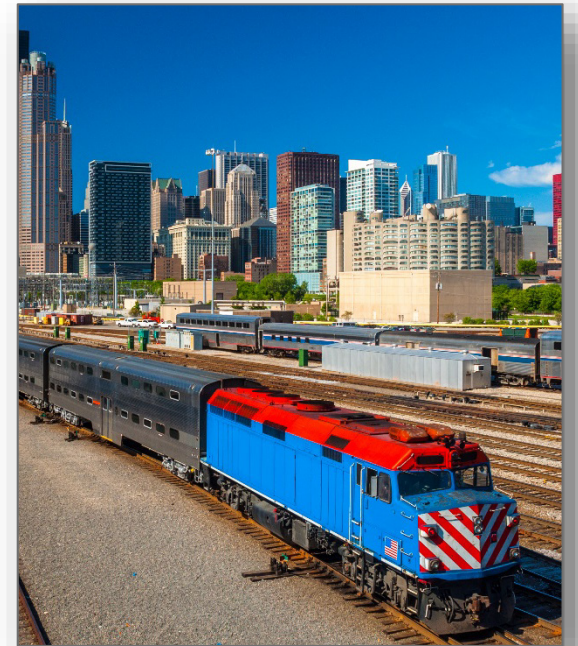


# Our *Focus*

## *Working together for rail safety*

*Establishing strong and enduring partnerships that foster a safe railroad operating environment nationwide as we focus on:*

- **REGULATORY OVERSIGHT** – Through data-driven inspections, audits, investigations, and special emphasis programs.
- **PERFORMANCE-BASED DATA** – Continuing a rigorous oversight and inspection program effectively utilizing performance-based data for productive decision-making and accountability.
- **INNOVATION** – Sponsoring and conducting research to support development and implementation of innovative technologies that improve safety, efficiency and reliability.
- **INVESTMENTS** – Maximizing benefits from capital investments.



# Our Core *Values*

## **SAFETY**

- *Safety* is part of everything the FRA does. Reducing and eliminating risk is essential to ensure safety across the rail industry.

## **INNOVATION**

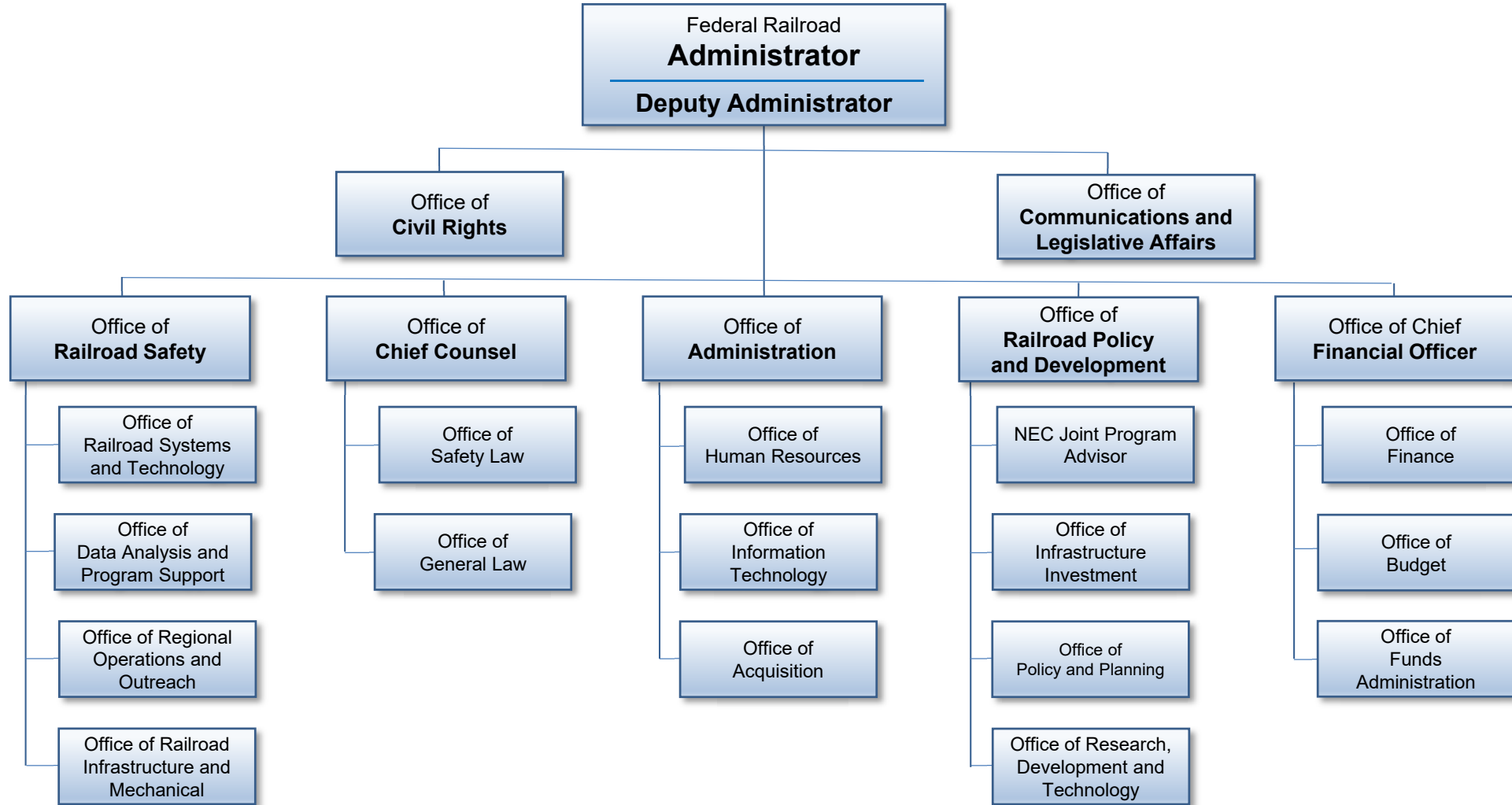
- *Innovation* is vital to advancing railroad efficiency and reliability.

## **ACCOUNTABILITY**

- *Accountability* is key value, deeply embedded in our organizational culture.



# Federal Railroad Administration



# Safety is Our Number One Priority

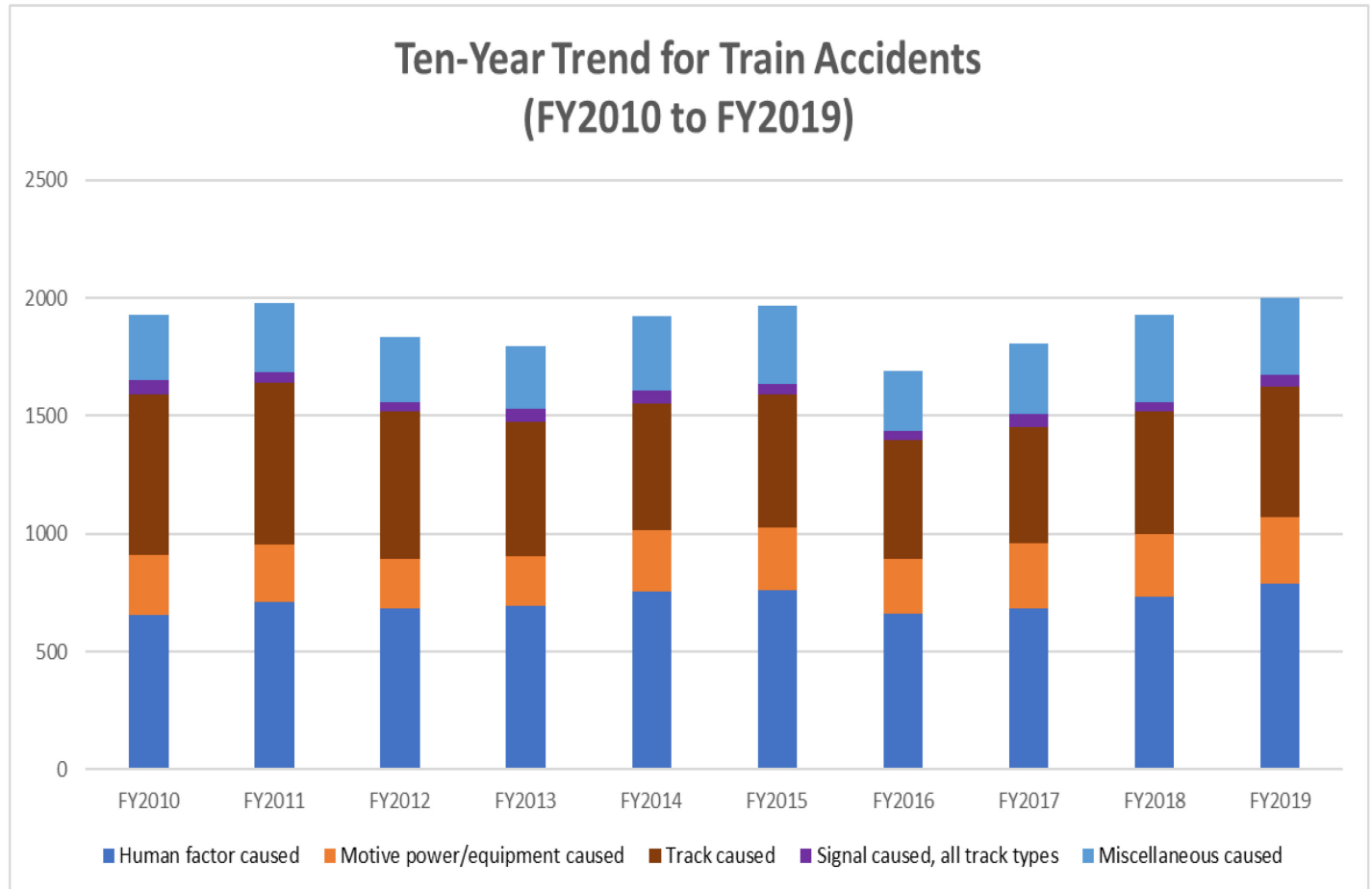
## Decision-Making and Actions

FRA's regulations and safety oversight are based on thorough analysis of data to guide agency actions.

Over the past decade:

- Train accidents (not at grade crossings) increased 4 percent
- Highway-rail grade crossing collisions have increased 13 percent
- Employee fatalities declined by 43 percent

Ten-Year Trend for Train Accidents  
(FY2010 to FY2019)



# *Safety is Our Number One Priority (continued)*

## **FRA'S SIGNIFICANT SAFETY IMPLEMENTATIONS:**

### **Preventive Actions – Reduces Accidents, Risks, and More**

- Ensuring Railroad Implementation of Positive Train Control (PTC)
- Highway-Rail Grade Crossing Safety Program
- Trespass Prevention Safety Program
- HAZMAT Transportation/Tank Car Safety
- Risk Reduction/System Safety/Confidential Close Call Reporting System (C3RS)
- Passenger Equipment Safety Standards
- Control of Alcohol and Drug Use Standards & Regulations
- Hours of Service of Railroad Employees
- Railroad Bridge Safety Oversight
- Waivers, Approvals, and Oversight of Technology Implementation

# Passenger Rail Safety Oversight

## ***FRA's Role Related to AMTRAK, Rail Passenger Service***

### **Amtrak is congressionally chartered** *(Rail Passenger Service Act of 1970)*

- For-profit corporation; independent for purposes of day-to-day operations
- Federal government exercises long-term control
- Reliant, in part, on annual federal and state appropriations

### **Amtrak operates a nationwide passenger rail network, including:**

- Higher-speed, high frequency Northeast Corridor services
- State-supported short distance corridor service in heavily populated regions
- Long-distance services connecting rural areas and distant population centers

### **FRA's Role**

- Administers and oversees Amtrak's two authorized annual grants for the Northeast Corridor and National Network
- Oversees Amtrak's performance; inspects safety compliance; and provides technical assistance and standards





# Infrastructure Investment

DOT and FRA Discretionary Grants under FAST Act (since 2017)



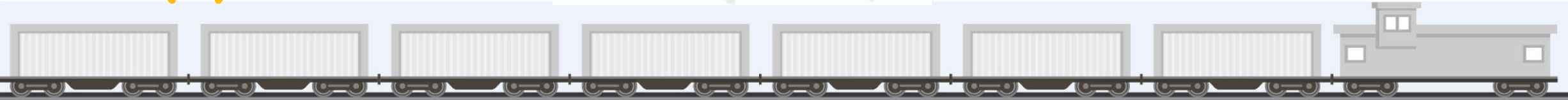
**264**  
projects  
selected



across  
**46**  
States



totaling  
**\$2.35B**



124  
Freight  
\$914.9M



74  
Mixed Use  
\$508.4M



55  
Passenger  
\$923.8M



117  
Rural  
\$764.4M



990+  
Grade  
Crossings

# FRA Areas of Research

## TRACK

- **FOCUS:** To develop technologies to improve track inspection and monitoring
- Track and infrastructure failure is the leading cause of train derailments in the United States.
- Another common cause of derailment is incorrect interaction between moving vehicles and the track.

## ROLLING STOCK

- **FOCUS:** To prevent derailments, equipment failure, and undesired emergency brake applications
- Other integral research areas are risk assessment and mitigation, along with support for safety assurance.

## TRAIN CONTROL & COMMUNICATION

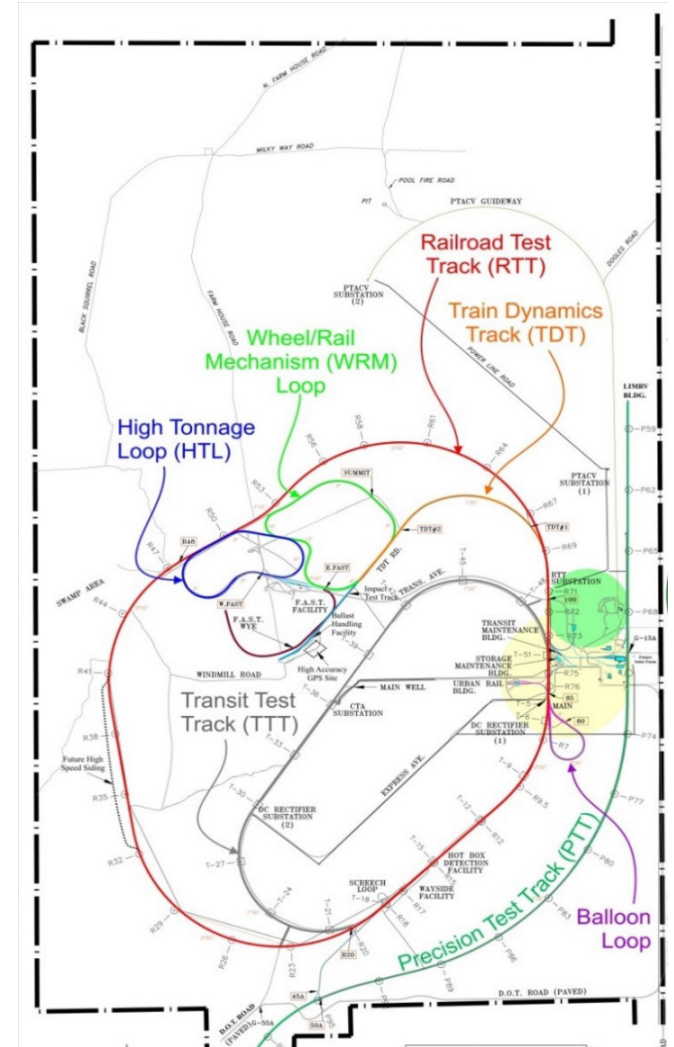
- **FOCUS:** To develop Intelligent Railroad Systems
- Systems will incorporate new sensor, computer, and digital communications technologies into train control, braking systems, grade crossings, and defect detection; also will integrate into planning and scheduling systems.

## HUMAN FACTORS

- **FOCUS:** To conduct research into automation, fatigue, distraction, and ergonomics
- Also conduct pilot trials to improve safety and organizational culture in railroad organizations.
- Human errors account for more than one third of all train accidents in the U.S. railroad industry.

# Innovation for the Future

- Since FY 2006, Congress has appropriated approximately \$40 million annually for FRA's research, development, and technology program.
- The FRA Transportation Technology Center (TTC) in Pueblo, Colorado plays an important part in research, development, and testing of rail infrastructure and equipment.
- Approximately 25% of FRA's annual RD&T investment goes to TTC.



# Guiding Principles

- **INTEGRITY.** The highest standards of ethical conduct will guide our stewardship of the public's trust and resources.
- **EXCELLENCE.** We will empower employees to focus time and resources on data-driven, cost-effective solutions that promote FRA mission accomplishments. We seek ongoing development of our knowledge base and skills. We will exhibit professional behavior at all times.
- **TRANSPARENCY AND ACCOUNTABILITY.** Senior leadership will engage employees in robust dialogue and constructive communication. We will embrace open decision-making. Our reward and recognition system will hold each of us responsible for our performance.
- **INNOVATION.** We will become an enterprising, resilient organization that invests in the future, as it streamlines and improves current operations.
- **ENGAGEMENT.** We will engage our stakeholders for creative problem solving and development of effective policies, programs, technology, and investments.
- **SAFETY.** We will strive to ensure the safety of our employees, the public, and the rail industry workforce.



# CONTACT US

Federal Railroad Administration  
1200 New Jersey Avenue, SE  
Washington, DC 20590

For more information visit us at  
[www.fra.dot.gov](http://www.fra.dot.gov)



Connect with us **USDOTFRA**