

Wilmington Rail Realignment Project

**New Hanover County and
Brunswick County, NC**

Legend

- Preferred Alternative Impact Area
- Potential Surface Waters
- Potential Wetlands
- Potential Streams
- Railroad

**Figure 5-1
Approximate Waters
of the U.S. Map**

Date: January 2022

0 0.025 0.05 0.1
Miles



1 inch = 400 feet



Notes:

1. Potential Jurisdictional Waters of the U.S. were delineated by WSP in the study area between 2/22/21 and 3/5/21.
2. This map includes areas that were approximated using a combination of aerial imagery, LiDAR, and soil surveys.
3. This map is intended for planning purposes only. This map is not intended for design, construction, or legal purposes.



Wilmington Rail Realignment Project

New Hanover County and
Brunswick County, NC

Source: Esri Aerial Imagery

Legend

- Preferred Alternative Impact Area
- Potential Surface Waters
- Potential Wetlands
- Potential Streams
- Railroad

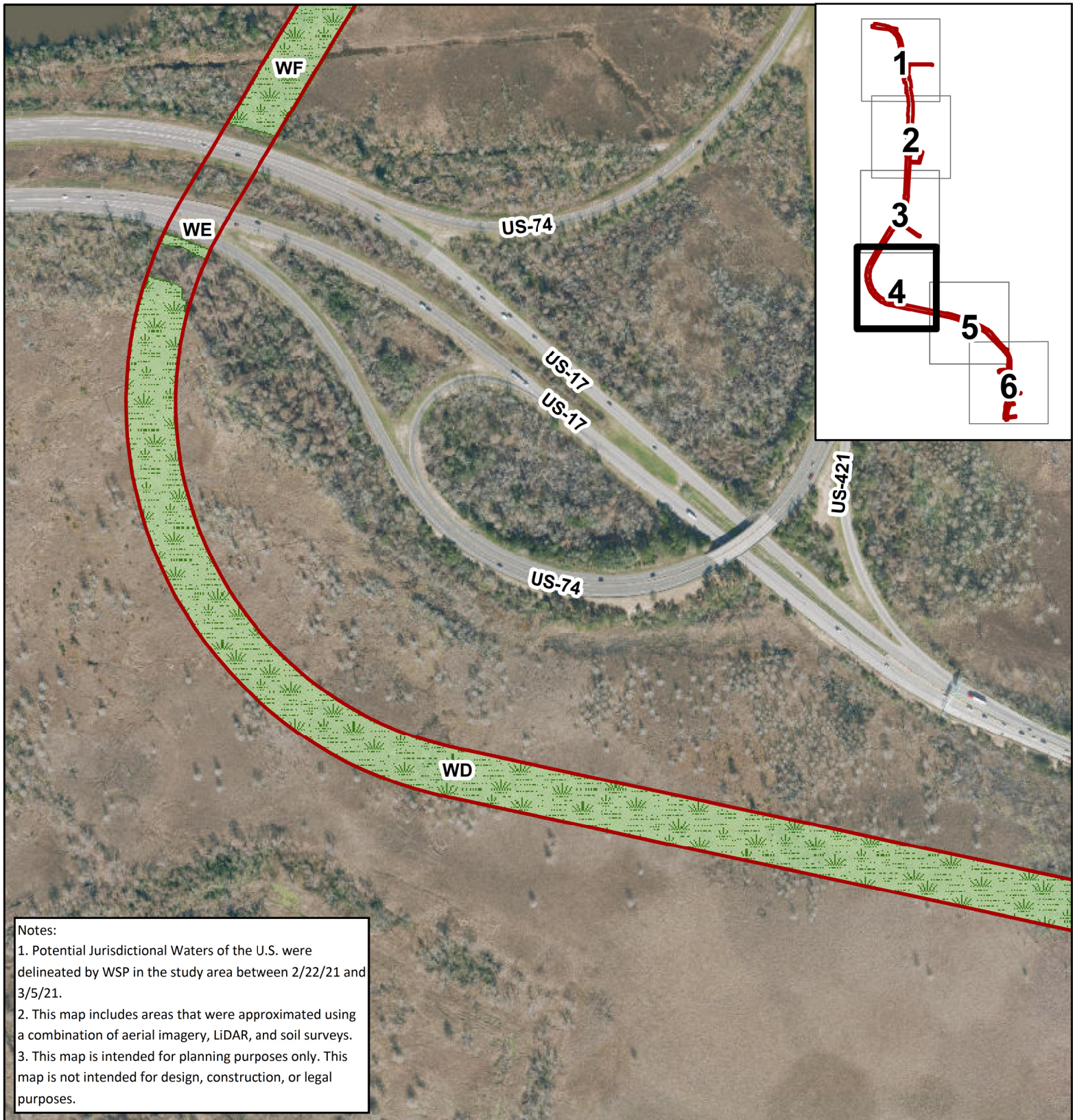
Figure 5-2
Approximate Waters
of the U.S. Map

Date: January 2022



0 0.025 0.05 0.1
Miles

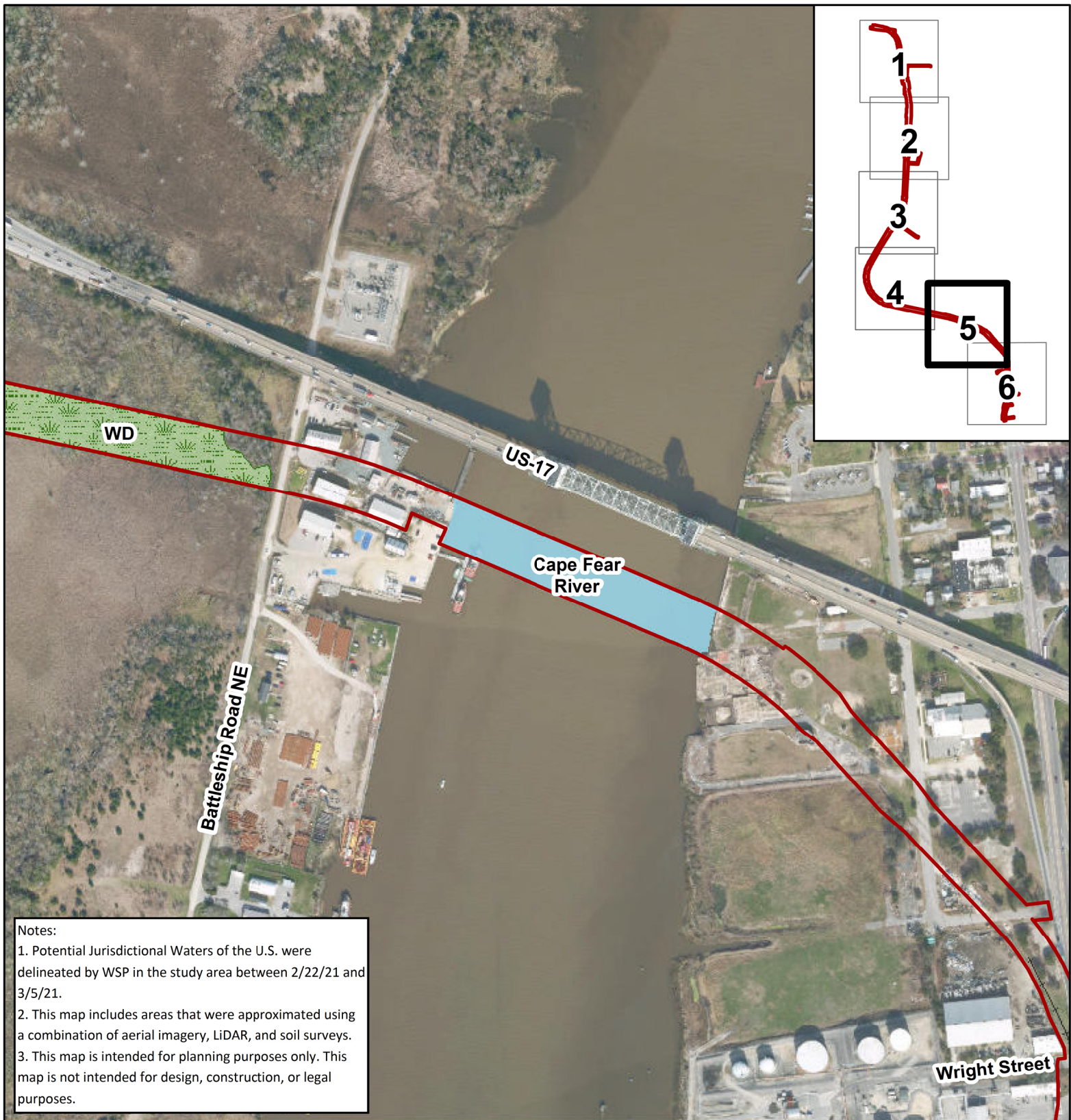
1 inch = 400 feet



Wilmington Rail Realignment Project

New Hanover County and
Brunswick County, NC

Source: Esri Aerial Imagery



Wilmington Rail Realignment Project

**New Hanover County and
Brunswick County, NC**

Legend

- Preferred Alternative Impact Area
- Potential Surface Waters
- Potential Wetlands
- Potential Streams
- Railroad

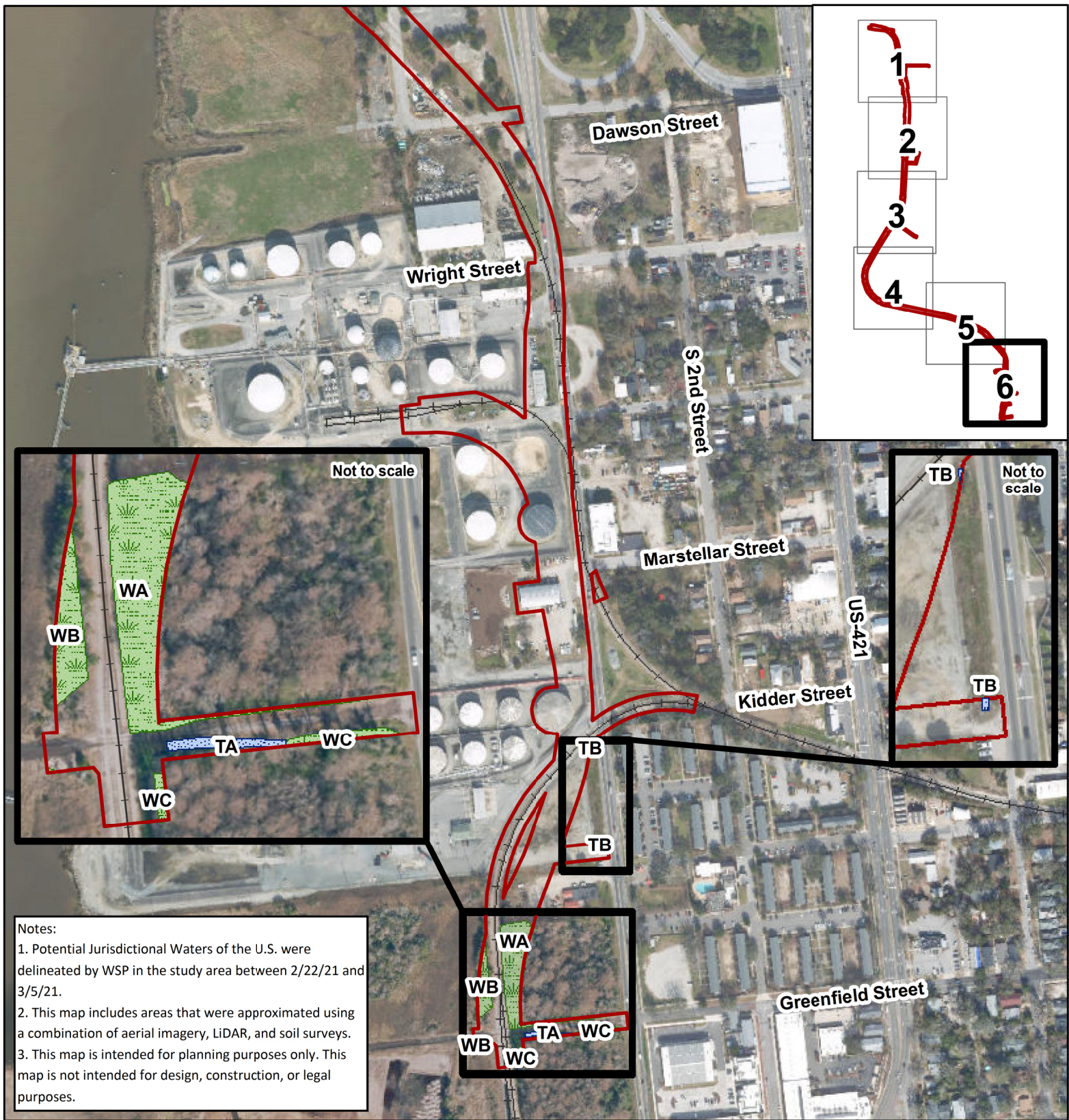
**Figure 5-5
Approximate Waters
of the U.S. Map**

Date: January 2022

0 0.025 0.05 0.1
Miles



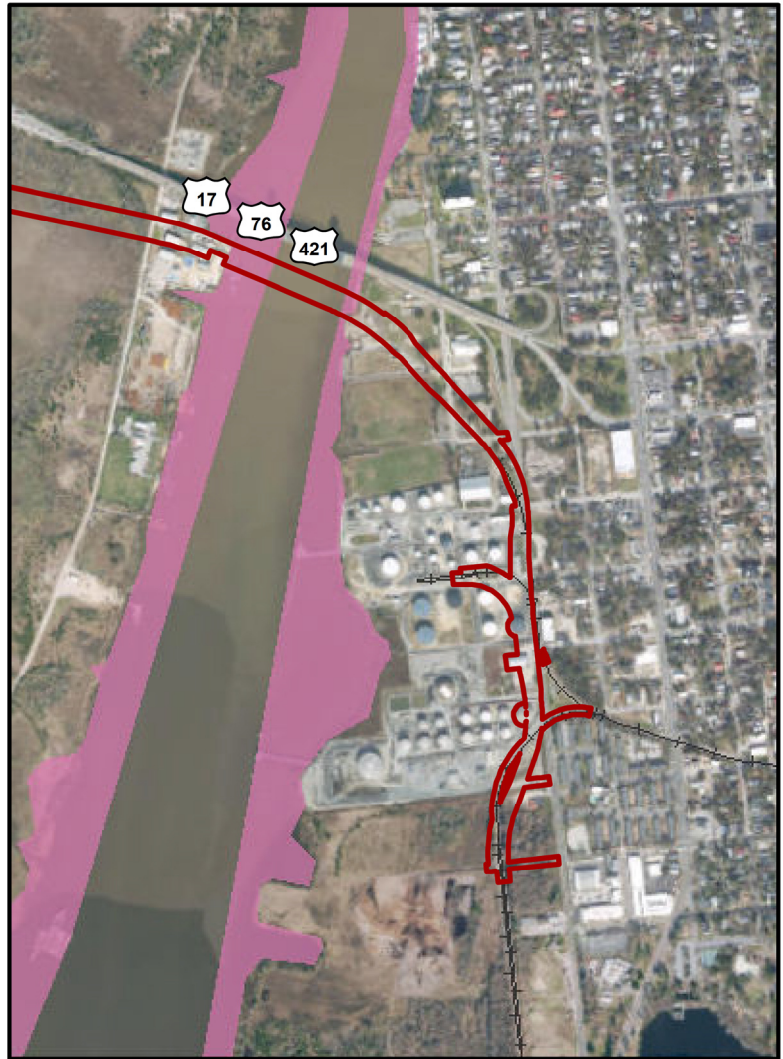
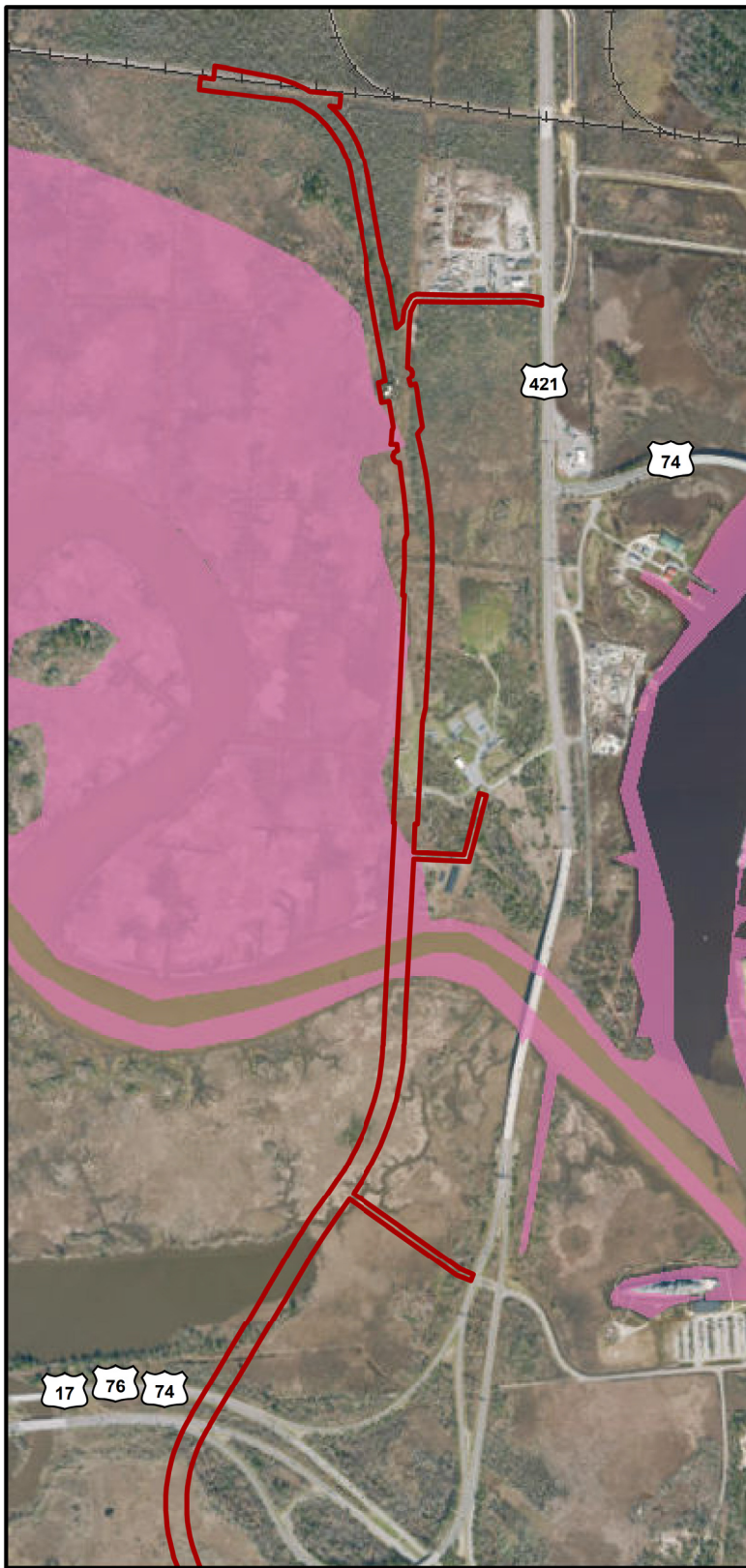
1 inch = 400 feet



Wilmington Rail Realignment Project

New Hanover County and
Brunswick County, NC

Source: Esri Aerial Imagery



Wilmington Rail Realignment Project

New Hanover County and
Brunswick County, NC

Legend

- Preferred Alternative Impact Area
- Primary Nursery Areas
- Railroad

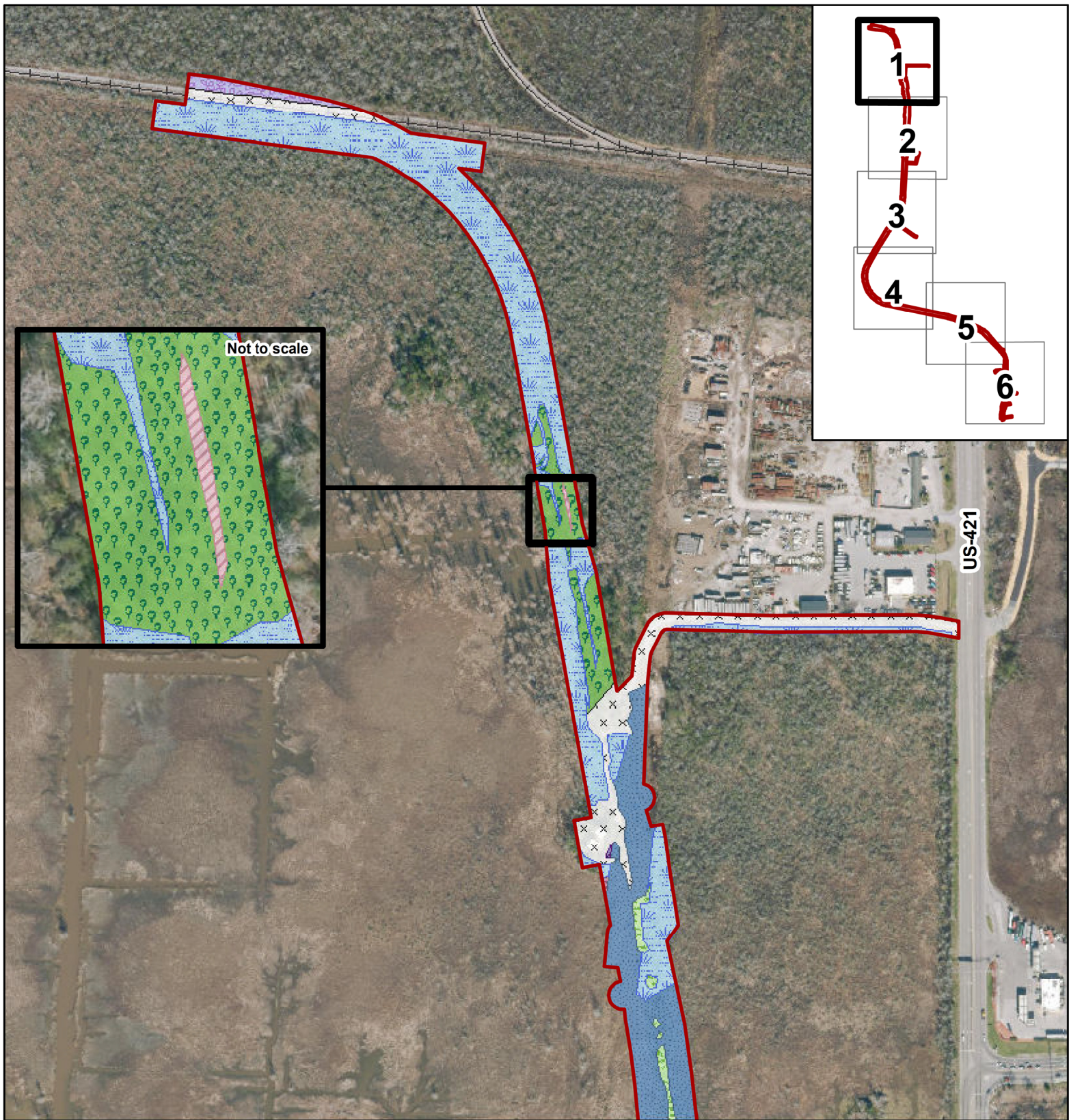
Figure 6
Primary Nursery Areas Map

Date: January 2022

0 0.1 0.2 0.4
Miles



1 inch = 1,250 feet



Wilmington Rail Realignment Project

**New Hanover County and
Brunswick County, NC**

Source: Esri Aerial Imagery

Legend

- | | |
|----------------------------------------------|------------------------------------------|
| Preferred Alternative Impact | Small Depression Pocosin (Typic Subtype) |
| Railroad | Swamp Island Evergreen Forest |
| Brackish Marsh | Tidal Freshwater Marsh |
| Cypress-Gum Swamp (Blackwater Subtype) | Tidal Swamp (Cypress-Gum Subtype) |
| Dry-Mesic Oak Hickory Forest (Coastal Plain) | Tidal Swamp (Mixed Subtype) |
| Maintained/Disturbed | |

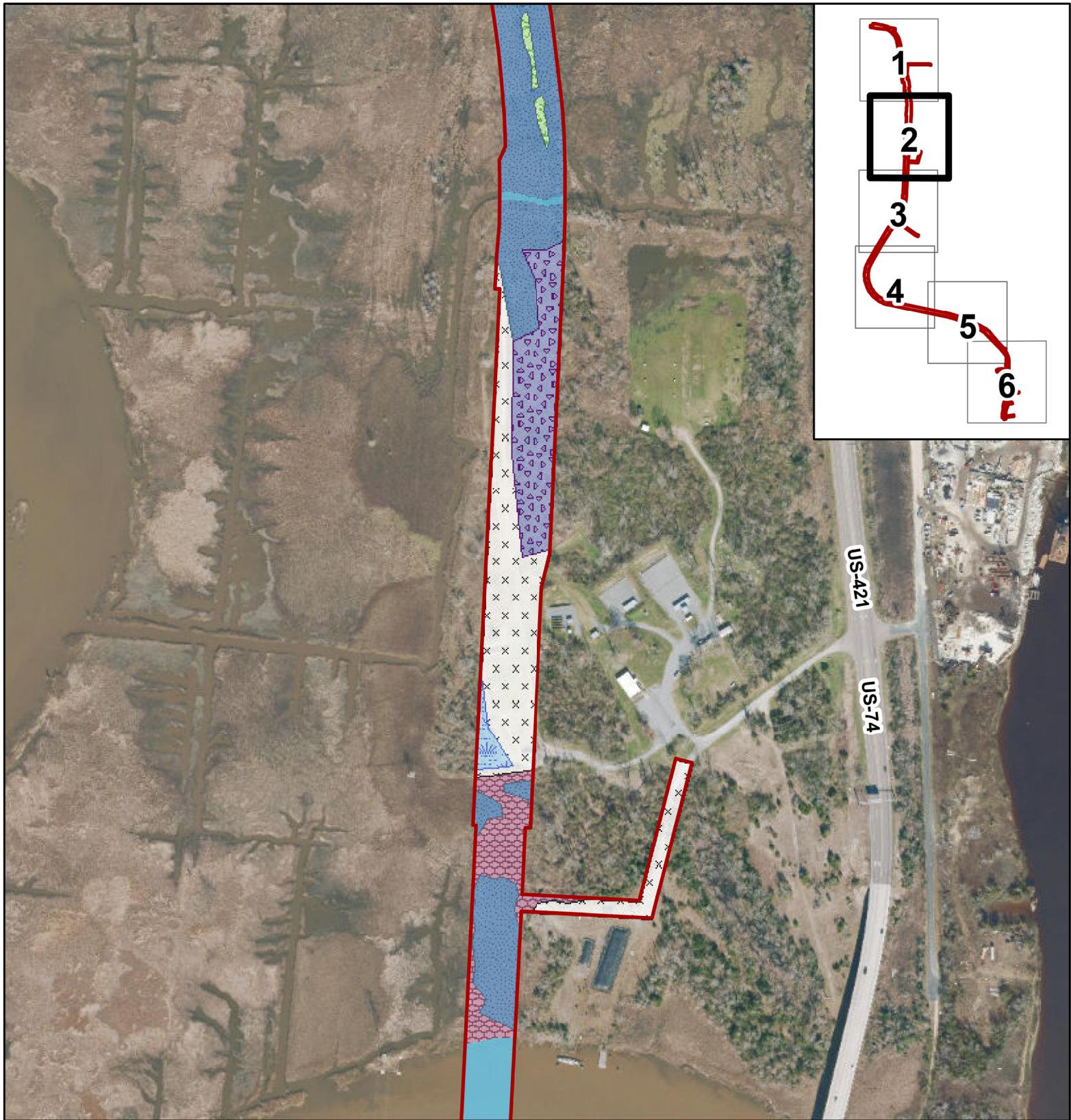
**Figure 7-1
Terrestrial Communities**

Date: January 2022



0 0.025 0.05 0.1
Miles

1 inch = 400 feet



Wilmington Rail Realignment Project

New Hanover County and
Brunswick County, NC

Legend

- | | |
|---------------------------------------------------------------------------------------------------------|----------------------------------------------------------------------------------------------------------------------------|
| Preferred Alternative Impact Area | Swamp Island Evergreen Forest |
| Railroad | Tidal Freshwater Marsh |
| Brackish Marsh | Tidal Swamp (Cypress-Gum Subtype) |
| x x Maintained/Disturbed | Tidal Swamp (Mixed Subtype) |
| Open Water | |

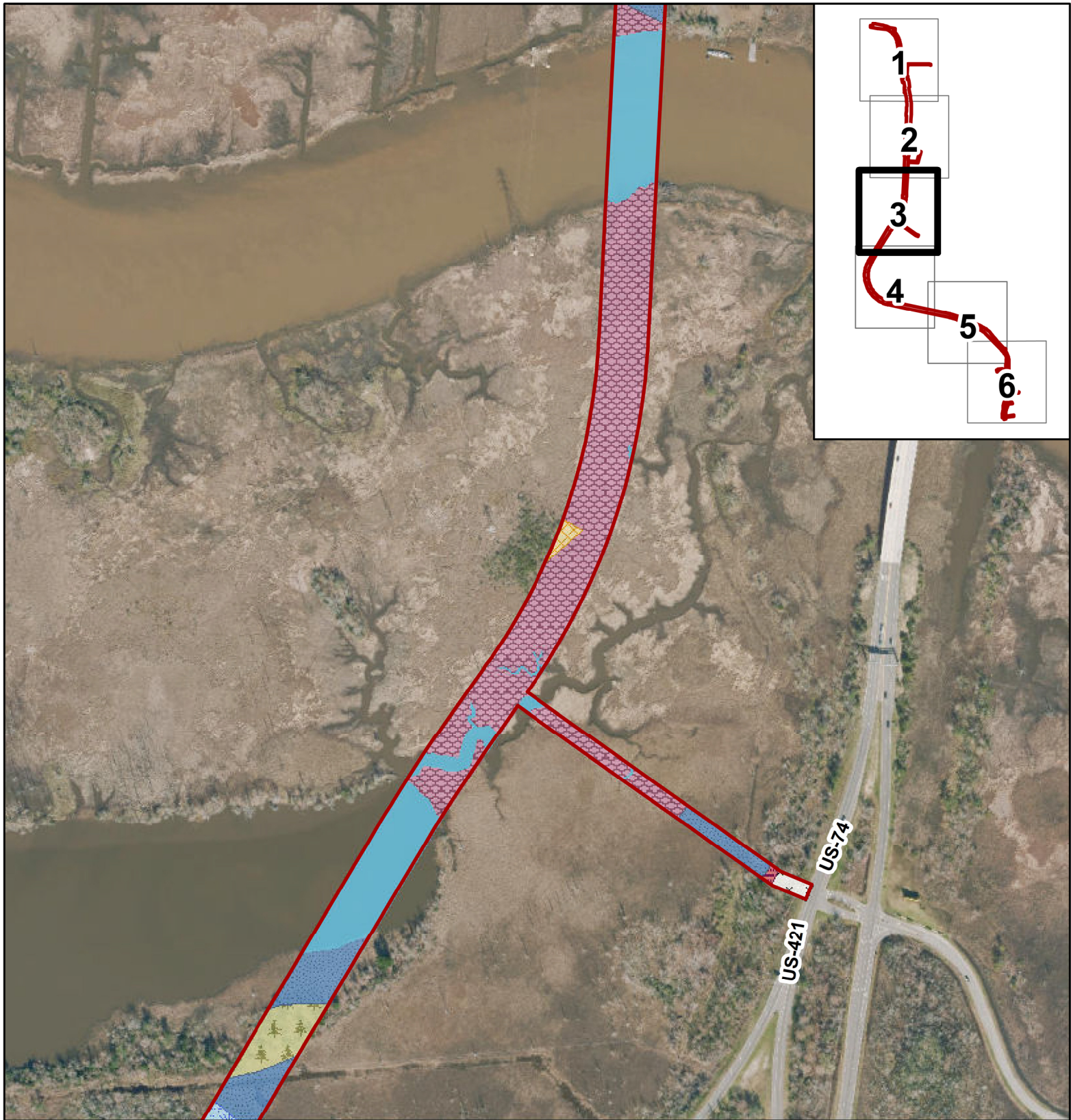
**Figure 7-2
Terrestrial Communities**

Date: January 2022



0 0.025 0.05 0.1
Miles

1 inch = 400 feet



Wilmington Rail Realignment Project

New Hanover County and
Brunswick County, NC

Legend

- | | |
|------------------------------------------------|---------------------------------------------|
| Preferred Alternative Impact Area | Mesic Mixed Hardwood Forest (Coastal Plain) |
| Railroad | Open Water |
| Blackwater Bottomland Hardwoods (High Subtype) | Salt Shrub |
| Brackish Marsh | Tidal Freshwater Marsh |
| Maintained/Disturbed | Tidal Swamp (Cypress-Gum Subtype) |

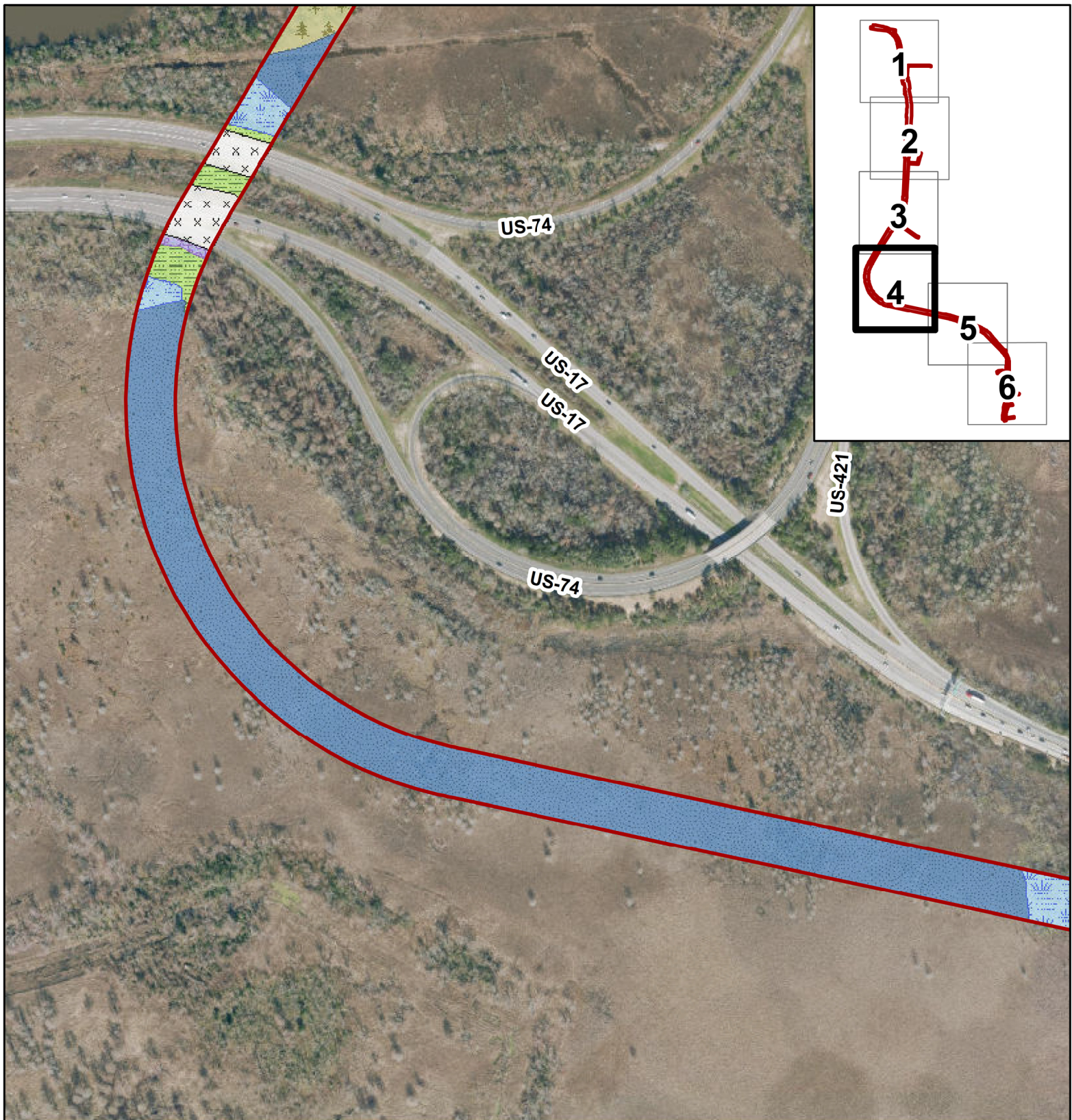
Figure 7-3
Terrestrial Communities

Date: January 2022



0 0.025 0.05 0.1
Miles

1 inch = 400 feet



Wilmington Rail Realignment Project

New Hanover County and
Brunswick County, NC

Source: Esri Aerial Imagery

Legend

- | | |
|-------------------------------------------------|----------------------------------------|
| Preferred Alternative Impact Area | Cypress-Gum Swamp (Blackwater Subtype) |
| Railroad | Maintained/Disturbed |
| Blackwater Bottomland Hardwoods (High Subtype) | Tidal Freshwater Marsh |
| Coastal Fringe Evergreen Forest (Typic Subtype) | Tidal Swamp (Cypress-Gum Subtype) |

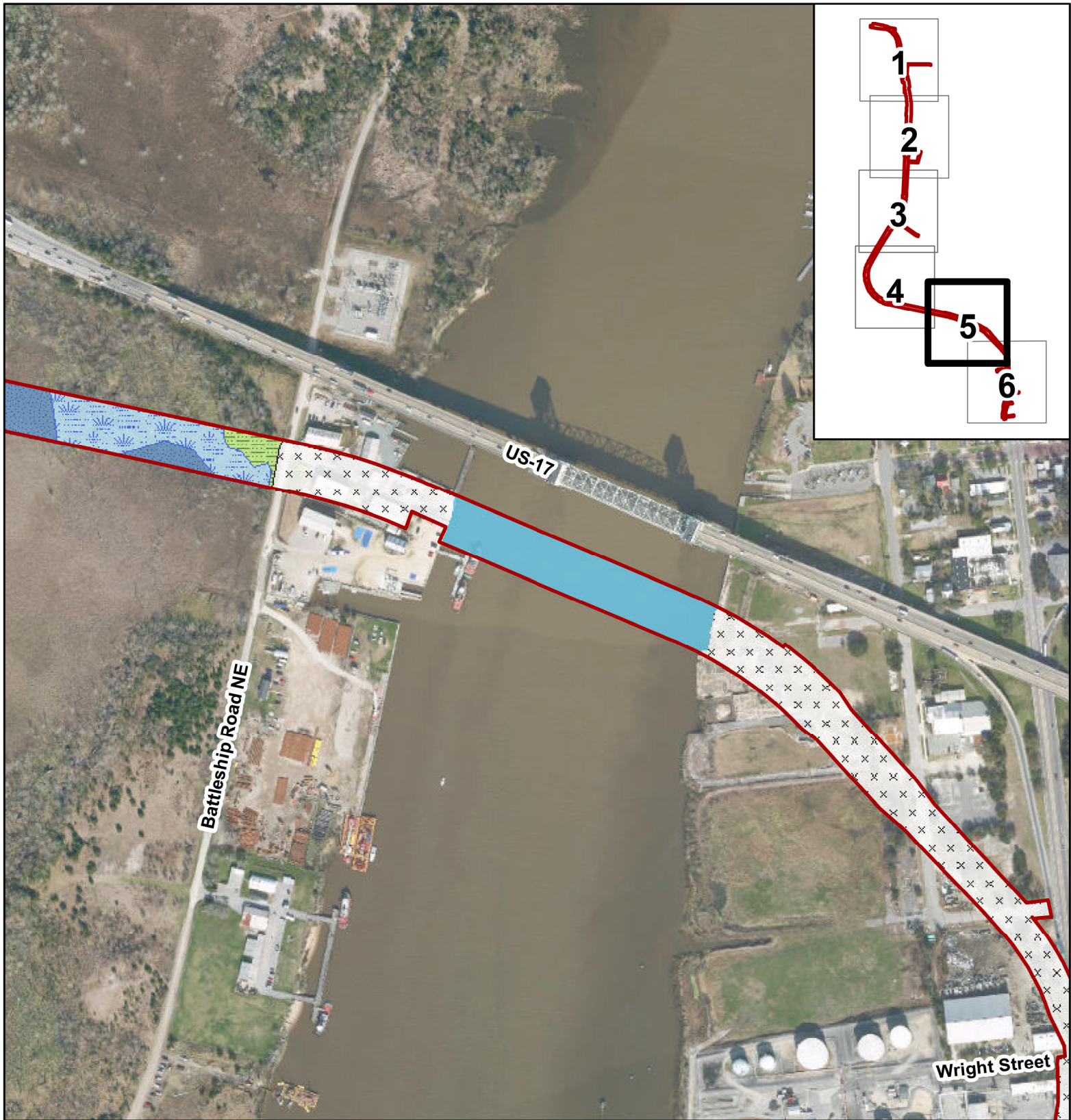
Figure 7-4
Terrestrial Communities

Date: January 2022



0 0.025 0.05 0.1
Miles

1 inch = 400 feet



Wilmington Rail Realignment Project

New Hanover County and
Brunswick County, NC

Source: Esri Aerial Imagery

Legend

- Preferred Alternative Impact Area
- Railroad
- Coastal Fringe Evergreen Forest (Typic Subtype)
- x Maintained/Disturbed
- Open Water
- Tidal Freshwater Marsh
- Tidal Swamp (Cypress-Gum Subtype)

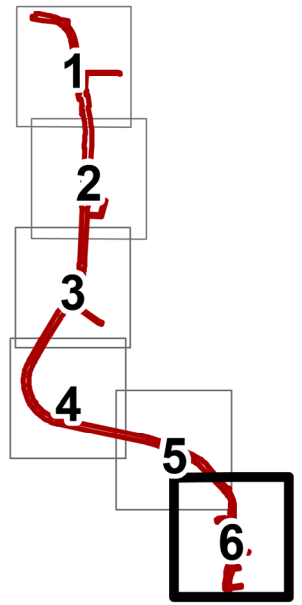
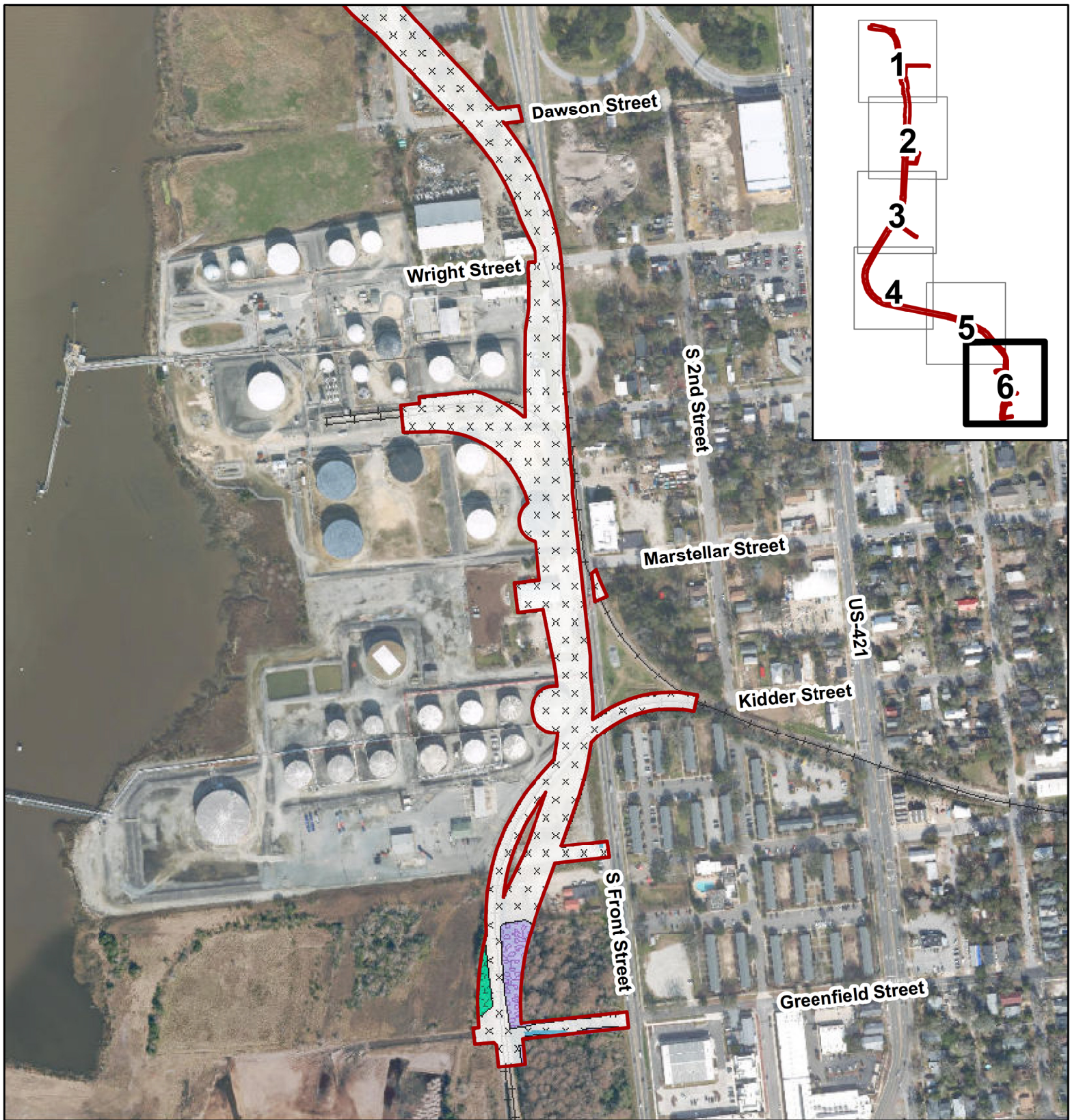
Figure 7-5
Terrestrial Communities

Date: January 2022



0 0.025 0.05 0.1
Miles

1 inch = 400 feet



Wilmington Rail Realignment Project

New Hanover County and
Brunswick County, NC

Legend

- Preferred Alternative Impact Area
- Railroad
- Brackish Marsh
- Cypress-Gum Swamp (Blackwater Subtype)
- Estuarine Fringe Pine Forest (Loblolly Subtype)
- Open Water
- Maintained/Disturbed

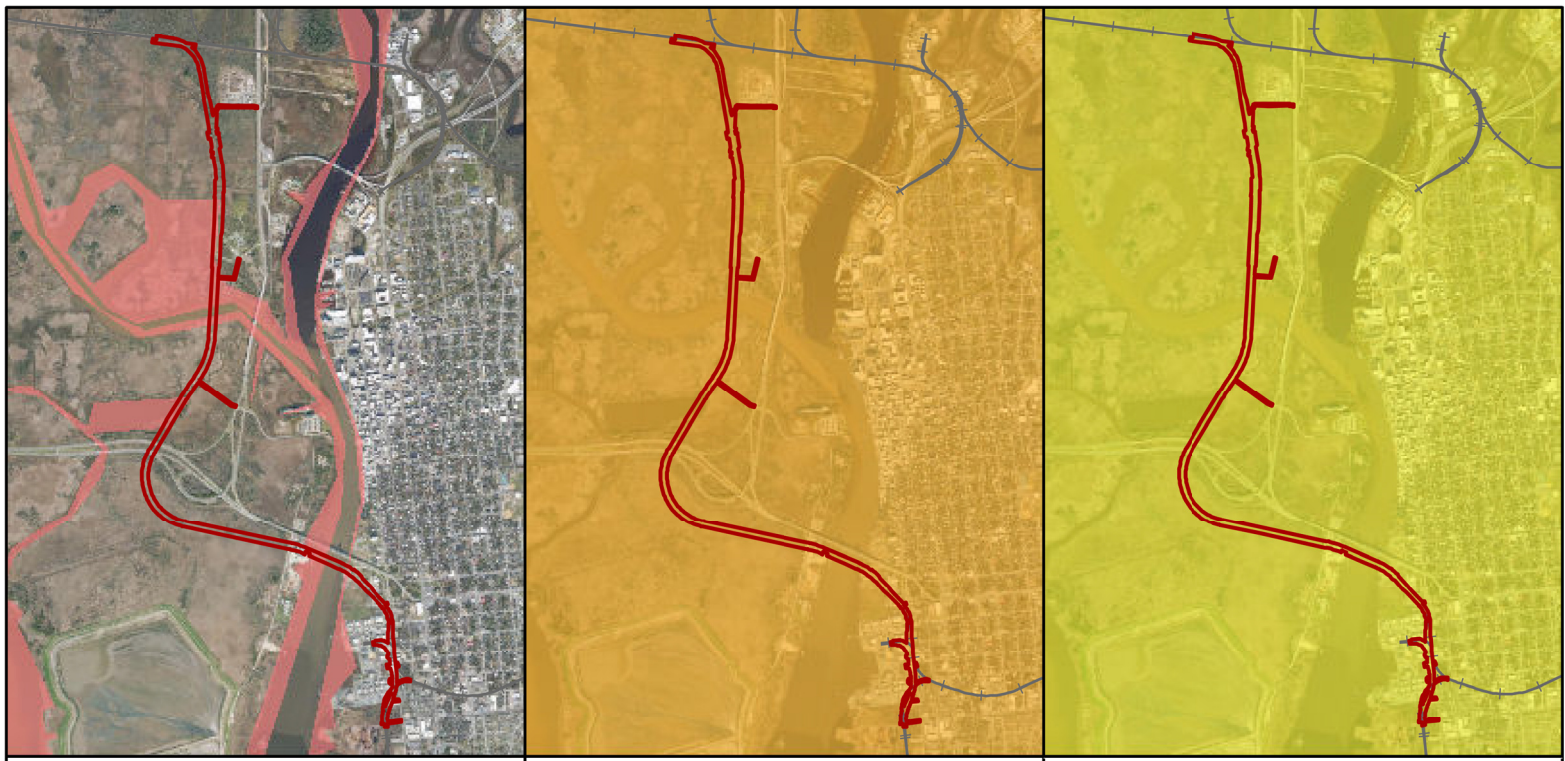
**Figure 7-6
Terrestrial Communities**

Date: January 2022



0 0.025 0.05 0.1
Miles

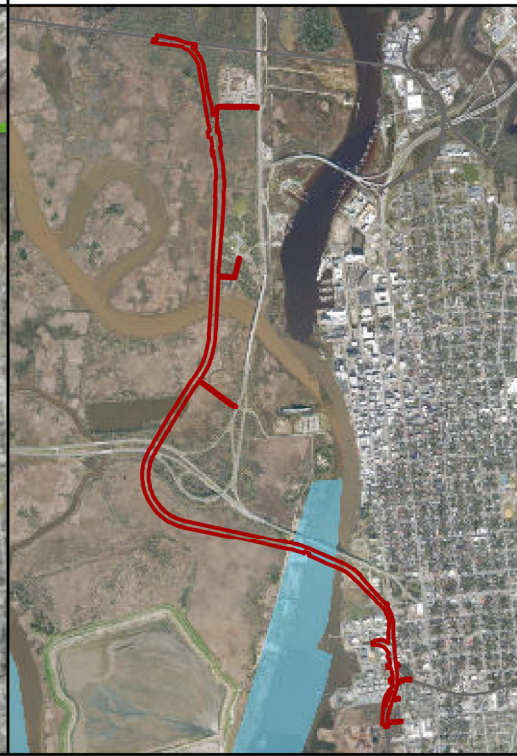
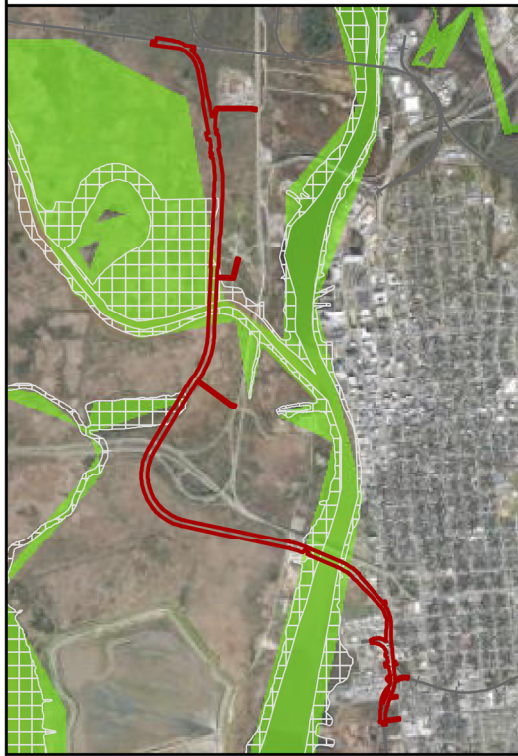
1 inch = 400 feet



Coastal Migratory Pelagics (All)

Atlantic Butterfish (Adult)

Bluefish (Adult/Juvenile)



Snapper Grouper (All)

Spinner Shark (Neonate)

**Summer Flounder
(Larvae/Juvenile/Adult)**



**Wilmington Rail
Realignment Project**

**New Hanover County and
Brunswick County, NC**

Legend

- Preferred Alternative Impact Area
- Coastal Migratory Pelagics (All)
- Atlantic Butterfish (Adult)
- Bluefish (Adult/Juvenile)
- Snapper Grouper (All)
- Spinner Shark (Neonate)
- Summer Flounder (Larvae/Juvenile/Adult)
- Habitat Areas of Particular Concern
- Railroad

**Figure 8
Essential Fish Habitat**

Date: January 2022



0 0.25 0.5 1
Miles

1 inch = 4,500 feet



- Notes:
1. Wetland and stream assessments were conducted between 2/22/21 and 3/5/21.
 2. Ratings have not been verified by the US Army Corp of Engineers.



Wilmington Rail Realignment Project

New Hanover County and
Brunswick County, NC

Source: Esri Aerial Imagery

Legend

 Preferred Alternative
Impact Area

—+— Railroad

NCSAM Rating

 High

 Medium

NCSAM Rating

 High

 Low

 Medium

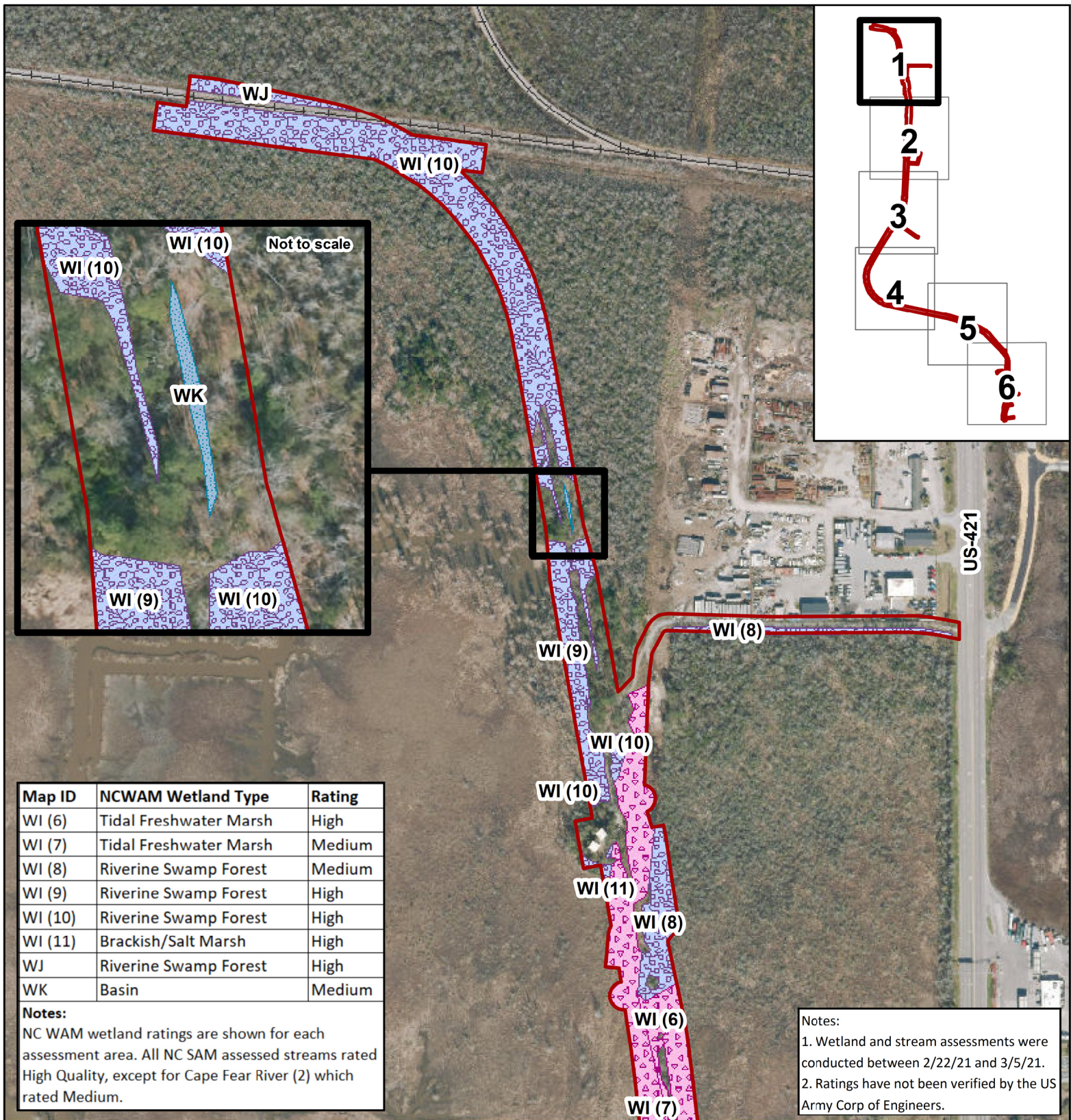
Figure 9
Stream and Wetland
Assessment Ratings Map

Date: January 2022

0 0.1 0.2 0.4
Miles

1 inch = 1,250 feet





Wilmington Rail Realignment Project

New Hanover County and
Brunswick County, NC

Source: Esri Aerial Imagery

Legend

- Preferred Alternative Impact Area
- NCSAM Assessed Streams
- Railroad

NCWAM Assessed Wetlands

- Basin
- Brackish/Salt Marsh
- Riverine Swamp Forest
- Tidal Freshwater Marsh

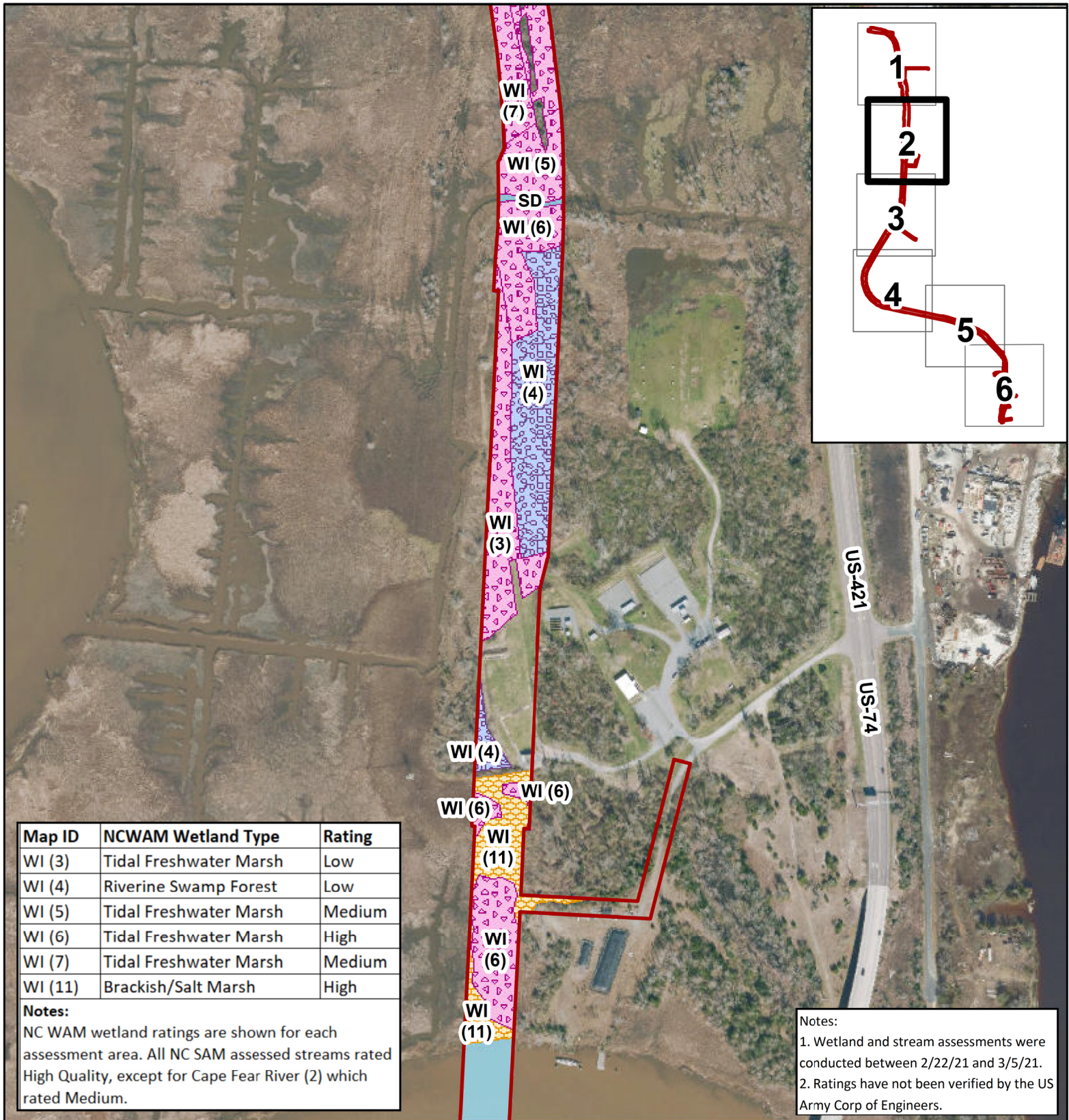
Figure 9-1 Stream and Wetland Assessment Ratings Map

Date: January 2022

0 0.025 0.05 0.1
Miles



1 inch = 400 feet



Wilmington Rail Realignment Project

New Hanover County and
Brunswick County, NC

Source: Esri Aerial Imagery

Legend

- Preferred Alternative Impact Area
- NCSAM Assessed Streams
- Railroad
- NCWAM Assessed Wetlands**
- Brackish/Salt Marsh
- Riverine Swamp Forest
- Tidal Freshwater Marsh

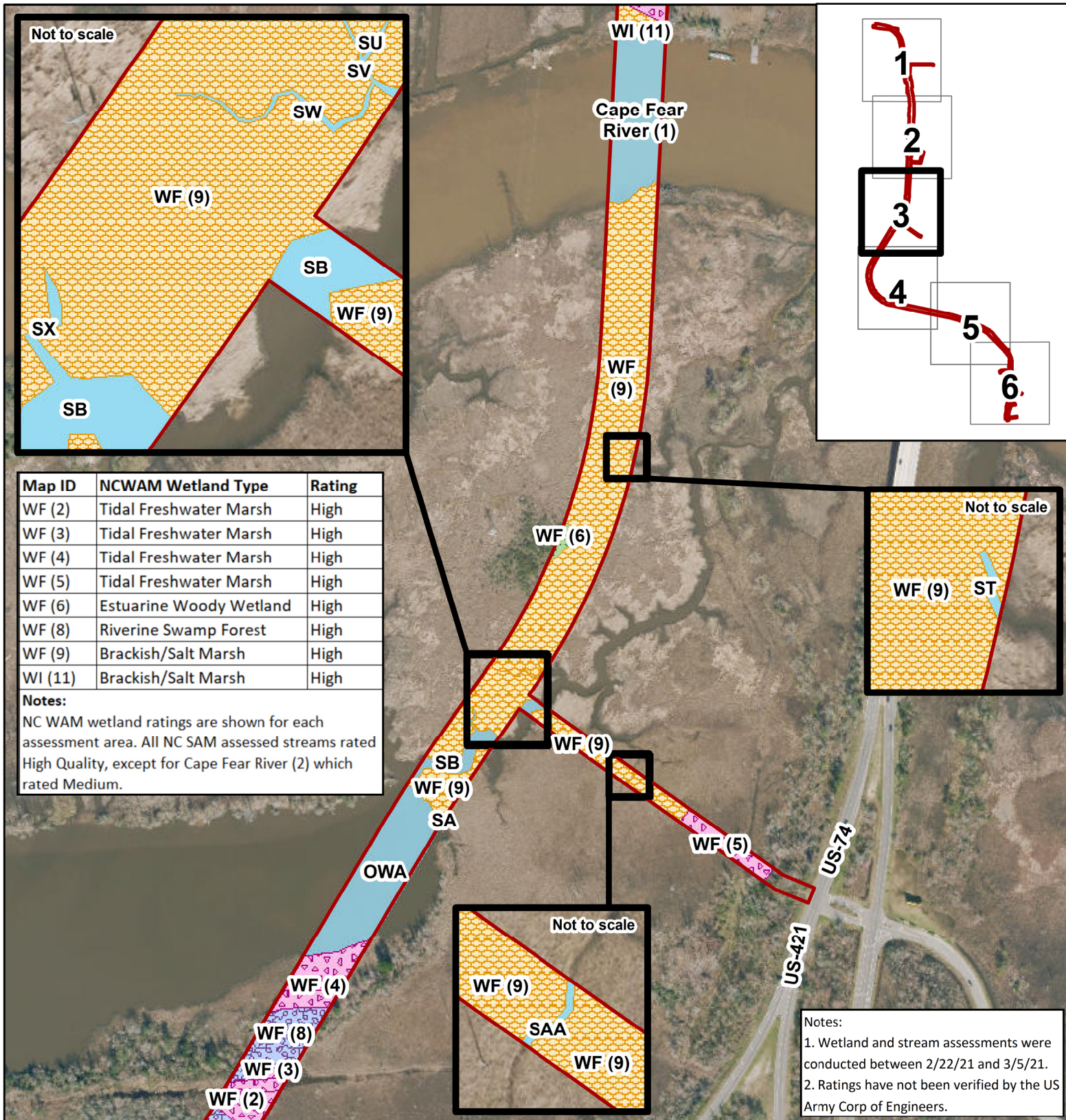
Figure 9-2
Stream and Wetland
Assessment Ratings Map

Date: January 2022



0 0.025 0.05 0.1
Miles

1 inch = 400 feet



Wilmington Rail Realignment Project

New Hanover County and
Brunswick County, NC

Source: Esri Aerial Imagery

Legend

- Preferred Alternative Impact Area
- NCSAM Assessed Streams
- Railroad

NCWAM Assessed Wetlands

- Brackish/Salt Marsh
- Estuarine Woody Wetland
- Riverine Swamp Forest
- Tidal Freshwater Marsh

**Figure 9-3
Stream and Wetland
Assessment Ratings Map**

Date: January 2022



0 0.025 0.05 0.1
Miles

1 inch = 400 feet