

AAF RAILWAY AT OOCEA ALTERNATIVE A PLANSET

AAF RAILWAY AT OOCEA ALTERNATIVE A
ALL ABOARD FLORIDA INTERCITY PASSENGER RAIL PROJECT



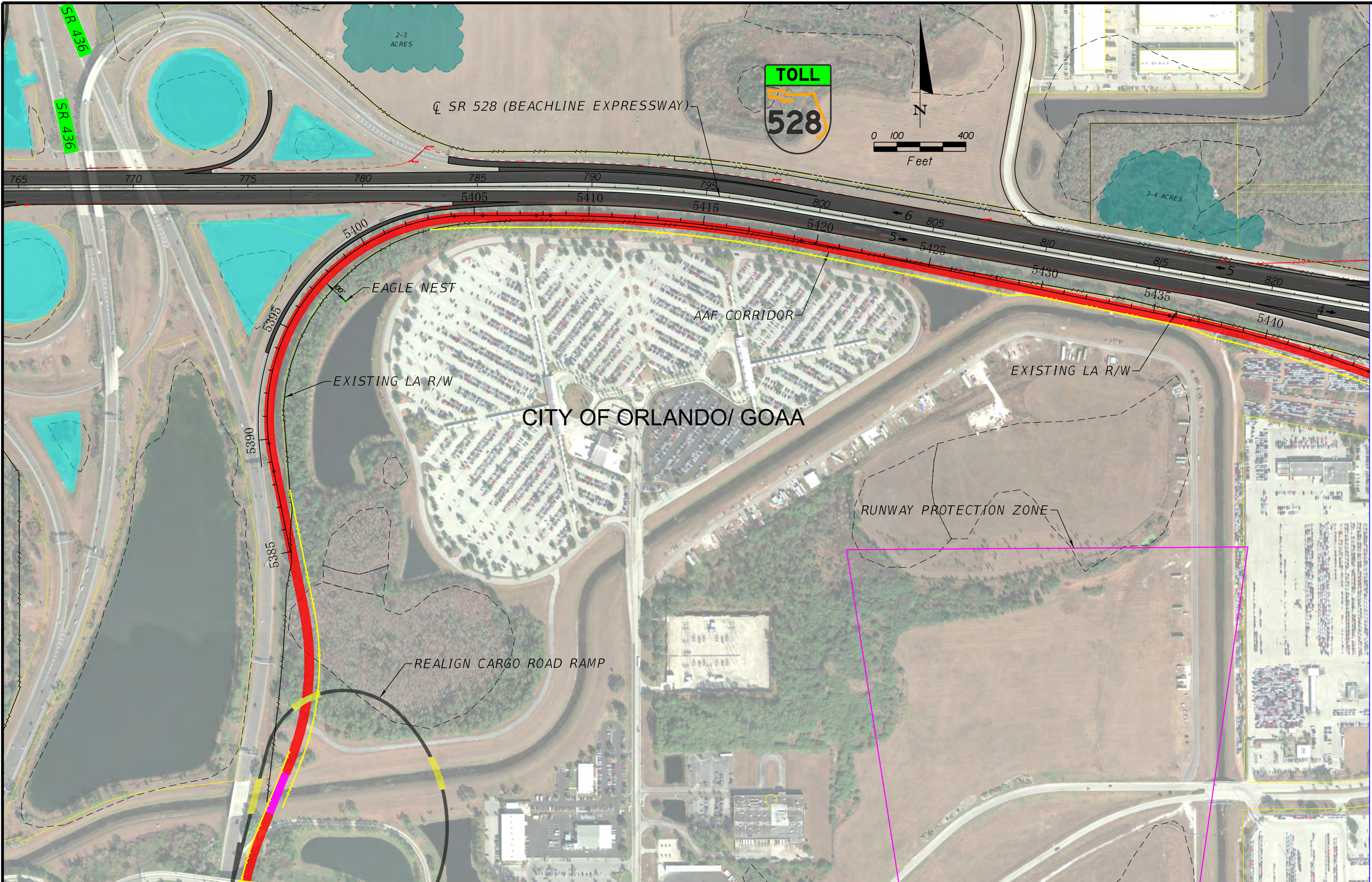
U.S. Department of Transportation
Federal Railroad Administration

\$USERS

\$DATES

\$TIMES

\$FILES



EXPLANATION OF FEATURES

- AAF AT GRADE ($\leq 8'$)
- AAF ABOVE GRADE ($> 8'$)
- AAF IN BOX SECTION

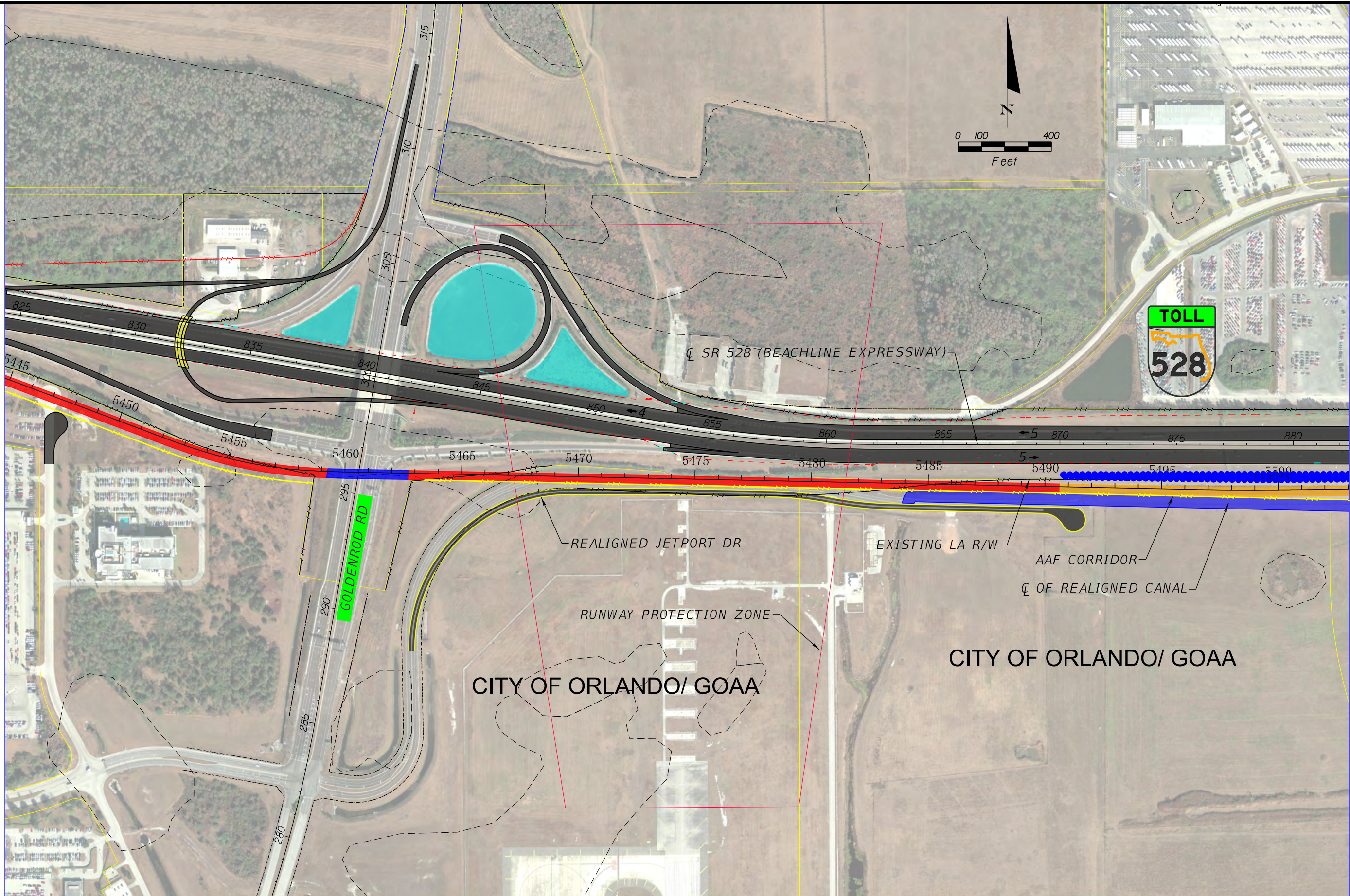
- AAF BRIDGE
- ROADWAY BRIDGE
- EXIST POND

- PROPOSED POND BY AAF
- PROPOSED (ULTIMATE) POND BY OCEA OR FDOT
- PROPOSED ROW (AAF)
- WETLAND BOUNDARY

AAF RAILWAY AT OCEA - ALL ALTERNATIVES
ALL ABOARD FLORIDA INTERCITY PASSENGER RAIL PROJECT



U.S. Department of Transportation
Federal Railroad Administration



EXPLANATION OF FEATURES

- AAF AT GRADE ($\leq 8'$)
- AAF ABOVE GRADE ($> 8'$)
- AAF IN BOX SECTION

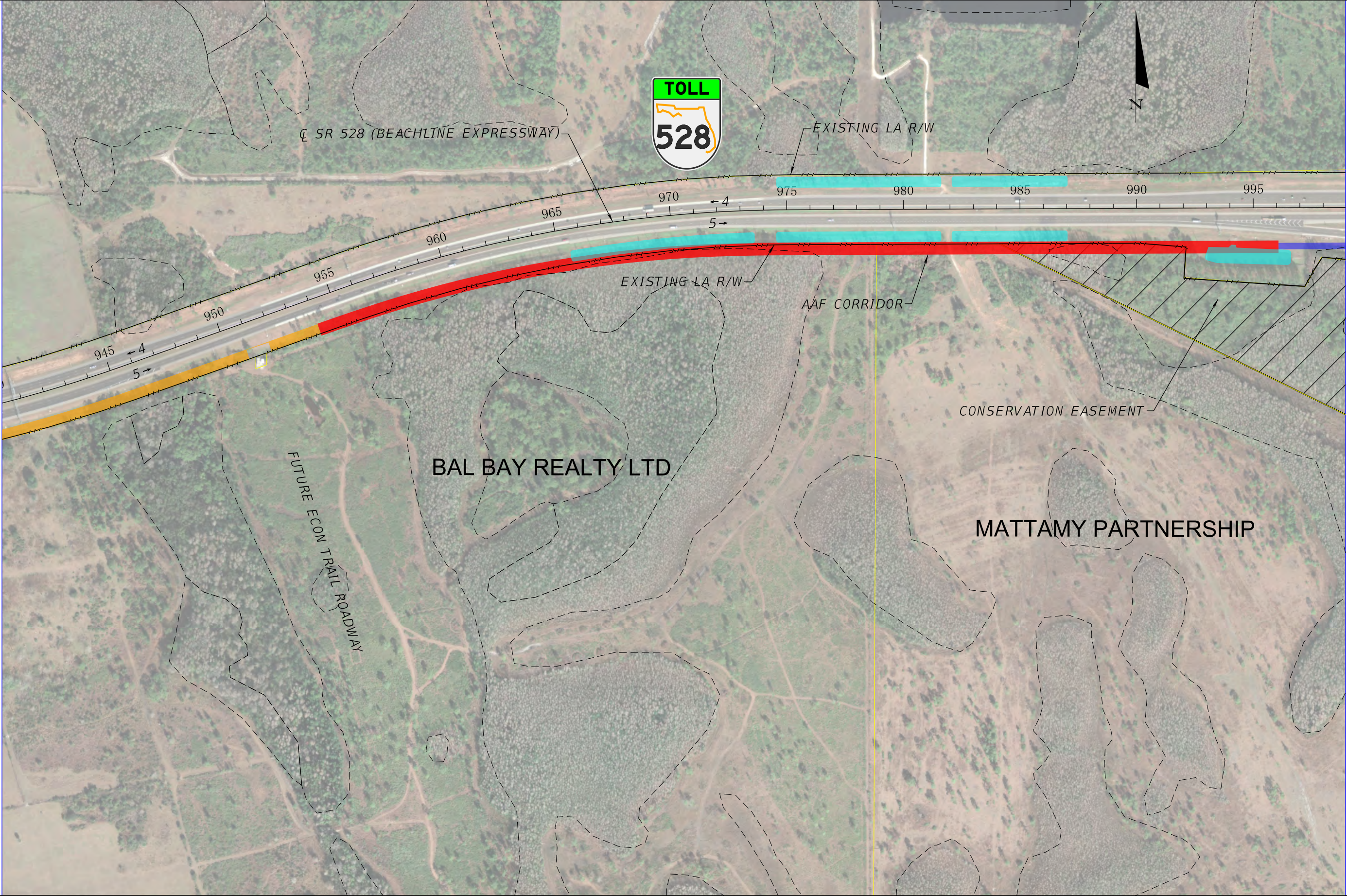
- AAF BRIDGE
- ROADWAY BRIDGE
- EXIST POND

- PROPOSED POND BY AAF
- PROPOSED (ULTIMATE) POND BY OCEA OR FDOT
- PROPOSED ROW (AAF)
- WETLAND BOUNDARY

AAF RAILWAY AT OCEA - ALL ALTERNATIVES
ALL ABOARD FLORIDA INTERCITY PASSENGER RAIL PROJECT



U.S. Department of Transportation
Federal Railroad Administration



EXPLANATION OF FEATURES

- AAAF AT GRADE ($\leq 8'$)
- AAAF ABOVE GRADE ($> 8'$)
- AAAF IN BOX SECTION

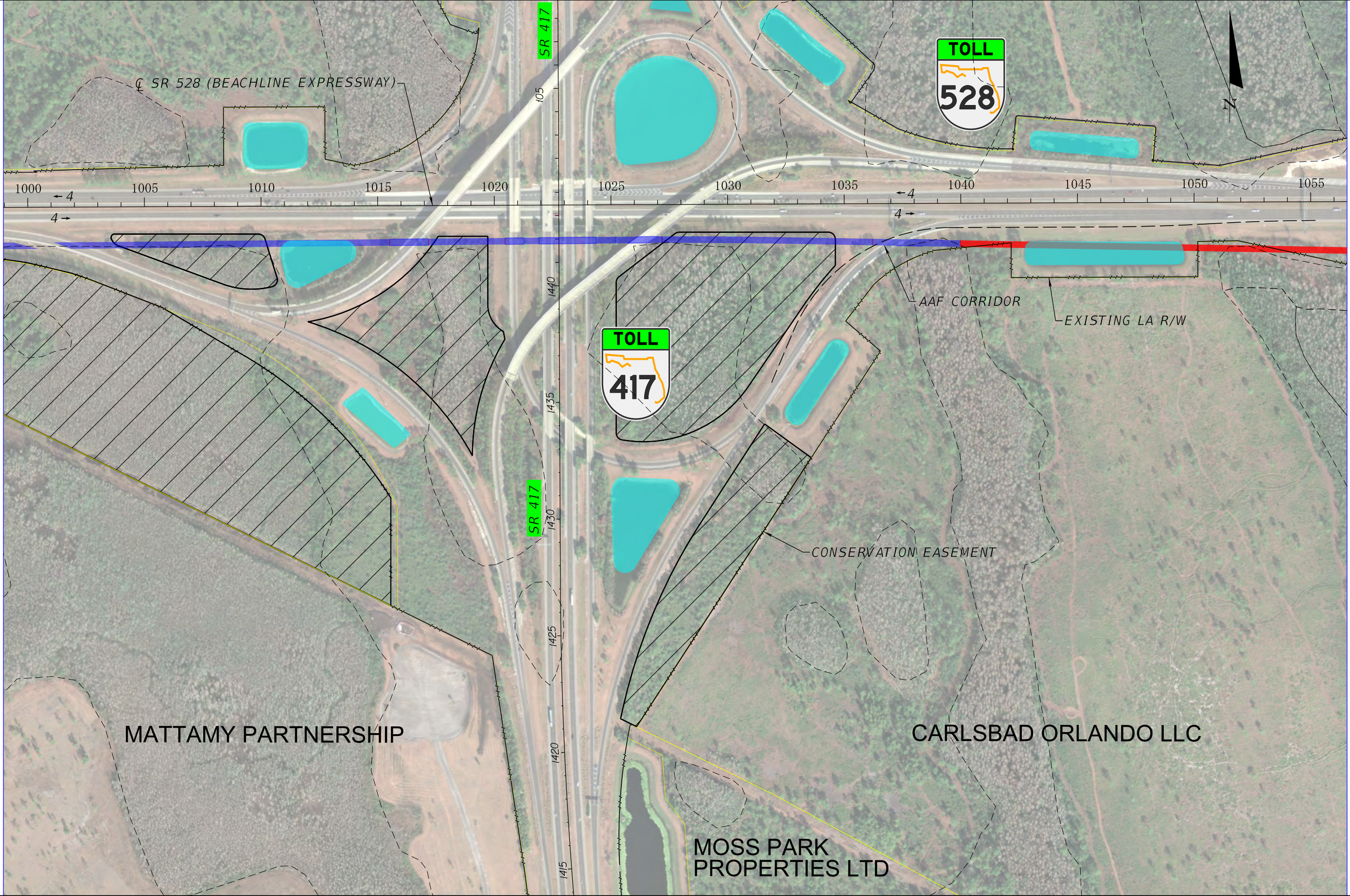
- AAAF BRIDGE
- ROADWAY BRIDGE
- EXIST POND

- PROPOSED POND BY AAF
- PROPOSED (ULTIMATE) POND BY OCEA OR FDOT
- PROPOSED ROW (AAF)
- WETLAND BOUNDARY

AAAF RAILWAY AT OCEA ALTERNATIVE A
ALL ABOARD FLORIDA INTERCITY PASSENGER RAIL PROJECT



U.S Department of Transportation
Federal Railroad Administration



EXPLANATION OF FEATURES			
	AAF AT GRADE (≤8')		AAF BRIDGE
	AAF ABOVE GRADE (>8')		ROADWAY BRIDGE
	AAF IN BOX SECTION		EXIST POND
			PROPOSED POND BY AAF
			PROPOSED (ULTIMATE) POND BY OCEA OR FDOT
			PROPOSED ROW (AAF)
			WETLAND BOUNDARY

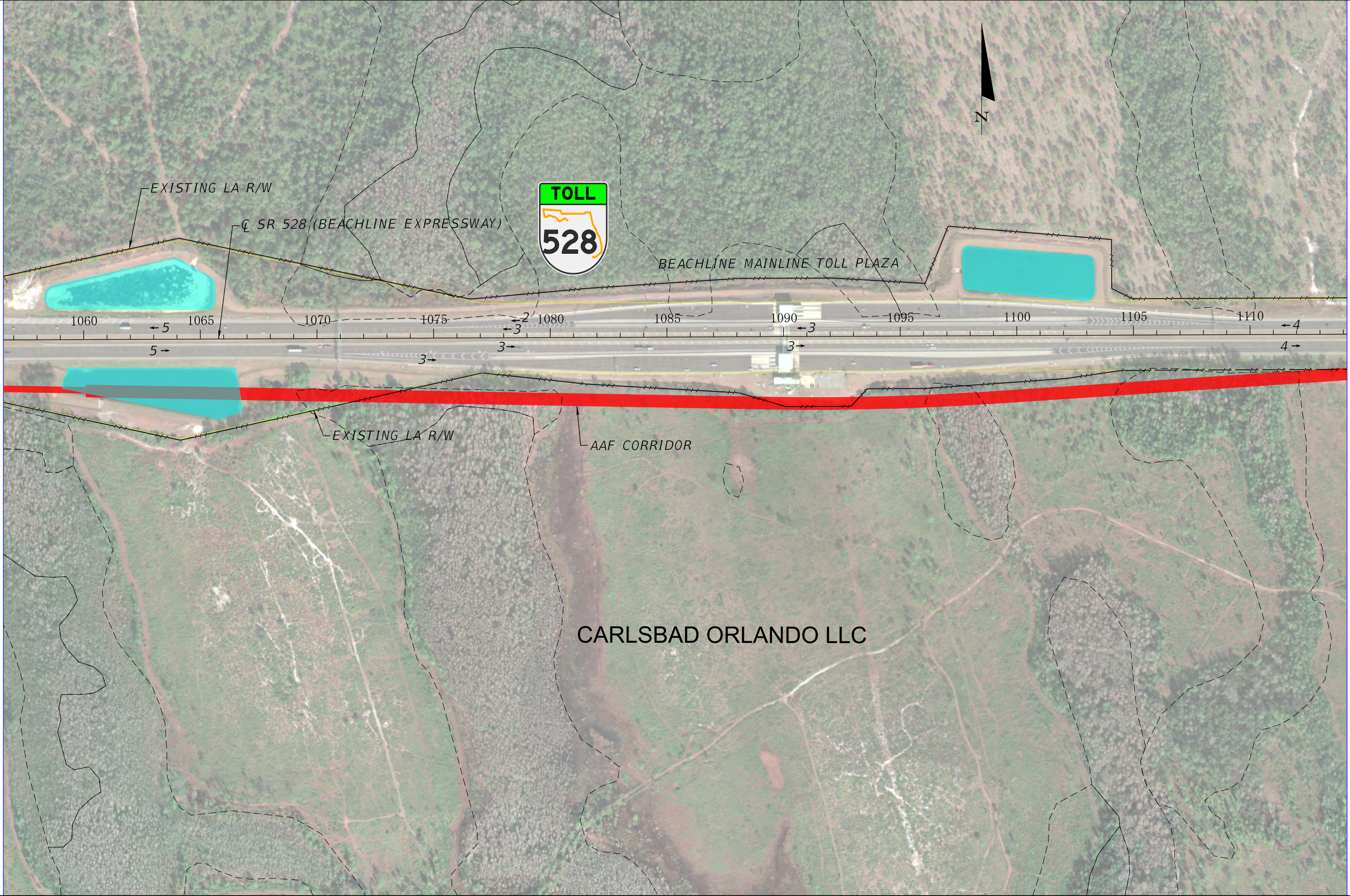
AAF RAILWAY AT OCEA ALTERNATIVE A		
ALL ABOARD FLORIDA INTERCITY PASSENGER RAIL PROJECT		
		U.S Department of Transportation
		Federal Railroad Administration

hnguyen

10/25/13

5:11:59 PM

c:\caddlib\pw\pwsoutheast\pw\hnguyen\dms98337\PLANRD405.DGN



EXPLANATION OF FEATURES			AAF RAILWAY AT OCEA ALTERNATIVE A	
AAF AT GRADE (≤8')	AAF BRIDGE	PROPOSED POND BY AAF	ALL ABOARD FLORIDA INTERCITY PASSENGER RAIL PROJECT	
AAF ABOVE GRADE (>8')	ROADWAY BRIDGE	PROPOSED (ULTIMATE) POND BY OCEA OR FDOT		
AAF IN BOX SECTION	EXIST POND	PROPOSED ROW (AAF)		
		WETLAND BOUNDARY		



EXPLANATION OF FEATURES			
<div></div> AAF AT GRADE ($\leq 8'$)	<div></div> AAF BRIDGE	<div></div> PROPOSED POND BY AAF	
<div></div> AAF ABOVE GRADE ($> 8'$)	<div></div> ROADWAY BRIDGE	<div></div> PROPOSED (ULTIMATE) POND BY OCEA OR FDOT	
<div></div> AAF IN BOX SECTION	<div></div> EXIST POND	<div></div> PROPOSED ROW (AAF)	
		<div></div> WETLAND BOUNDARY	

AAF RAILWAY AT OCEA ALTERNATIVE A

ALL ABOARD FLORIDA INTERCITY PASSENGER RAIL PROJECT

0100400 FT

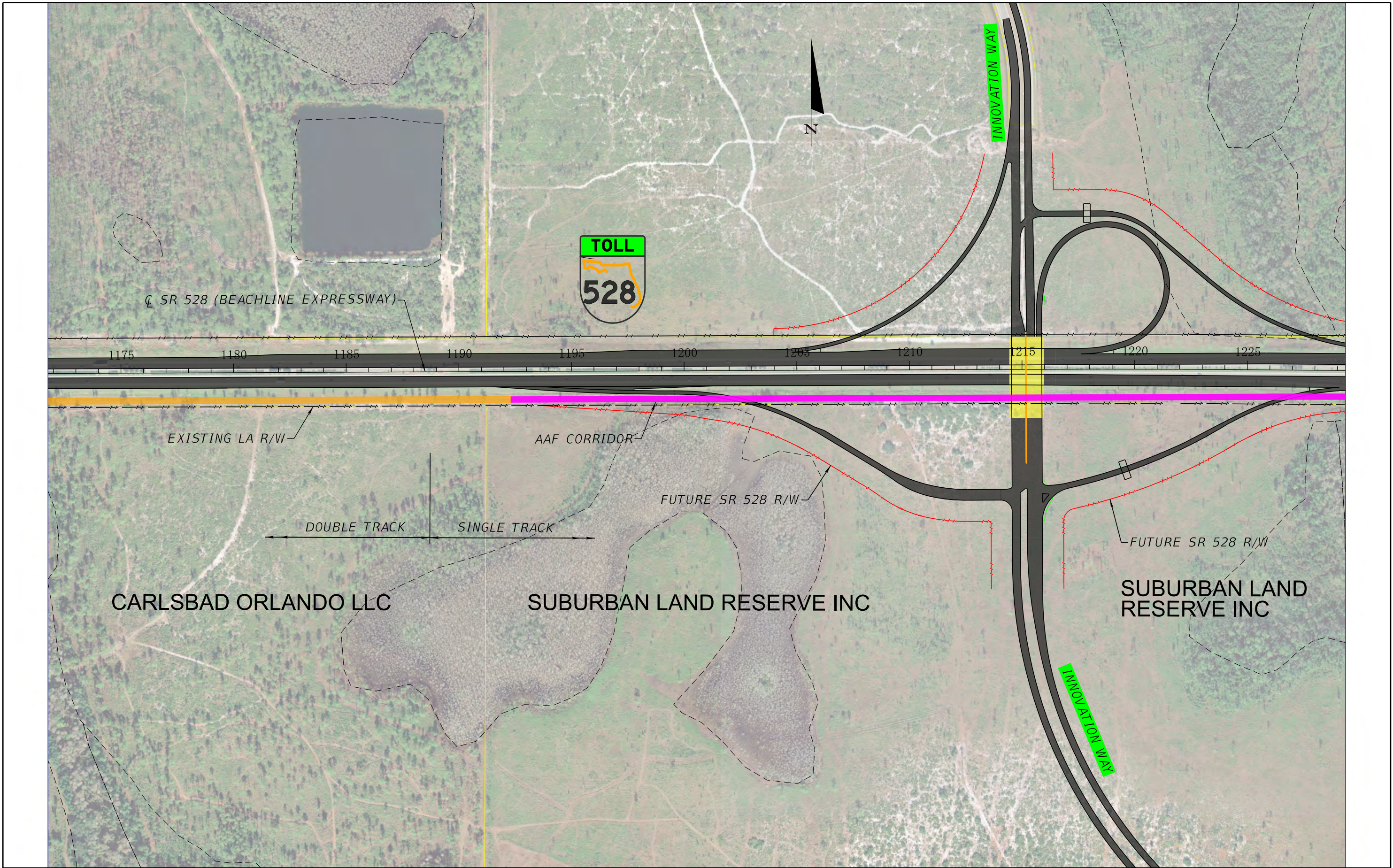
U.S Department of Transportation
Federal Railroad Administration













hnguyen

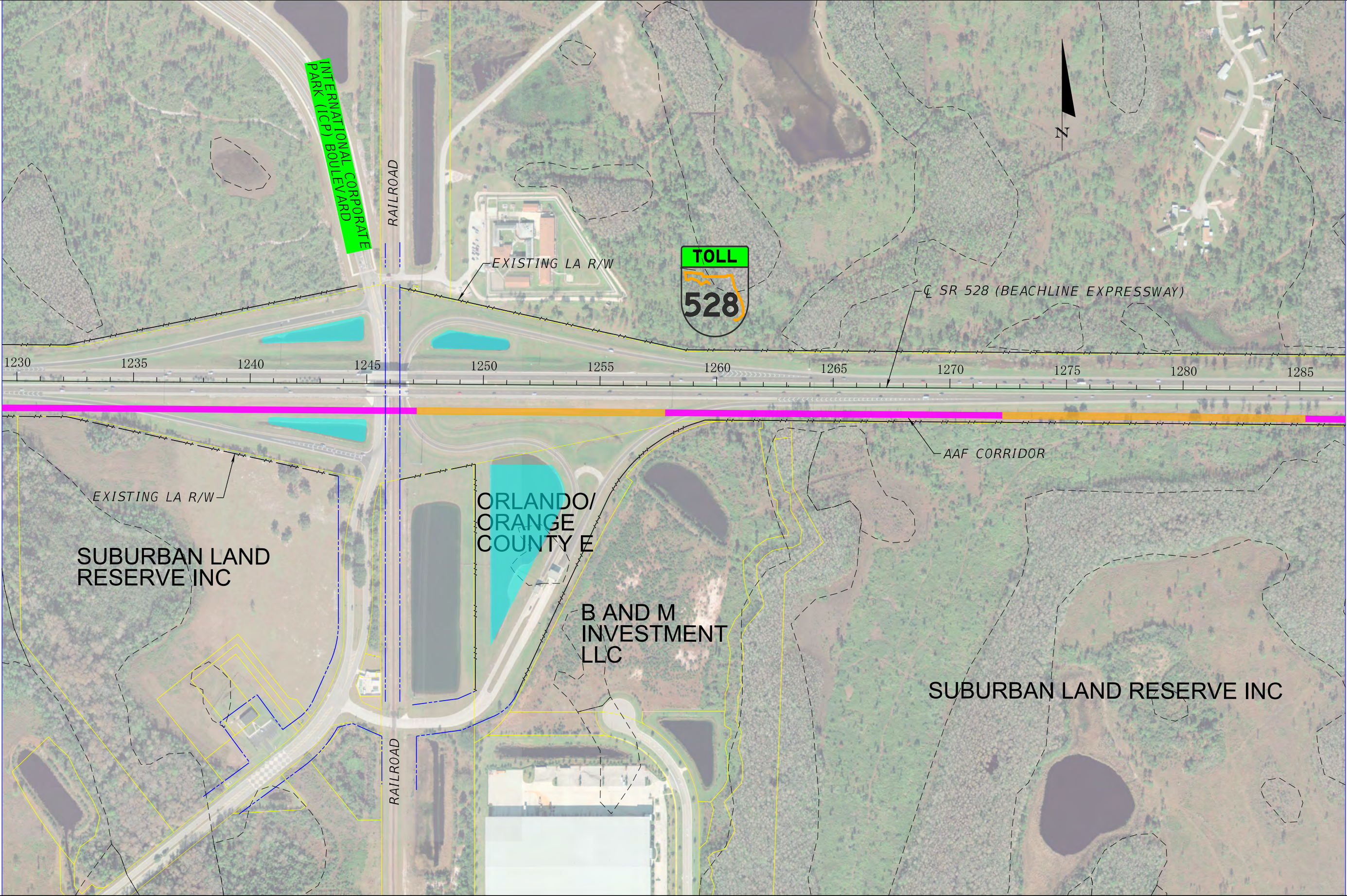
10/24/13

6:06:49 PM

C:\caddlib\pw\pwsouth\east\pw\hnguyen\dms98337\PLANRD407.DGN



EXPLANATION OF FEATURES			AAF RAILWAY AT OCEA ALTERNATIVE A		
			ALL ABOARD FLORIDA INTERCITY PASSENGER RAIL PROJECT		
	AAF AT GRADE ($\leq 8'$)		AAF BRIDGE		PROPOSED POND BY AAF
	AAF ABOVE GRADE ($> 8'$)		ROADWAY BRIDGE		PROPOSED (ULTIMATE) POND BY OCEA OR FDOT
	AAF IN BOX SECTION		EXIST POND		PROPOSED ROW (AAF)
			 WETLAND BOUNDARY		
					U.S. Department of Transportation Federal Railroad Administration
hnguyen			10/24/13	6:07:22 PM	C:\caddlib\pw\pwsouth east\pw\hnguyen\dms98337\PLANRD408.DGN



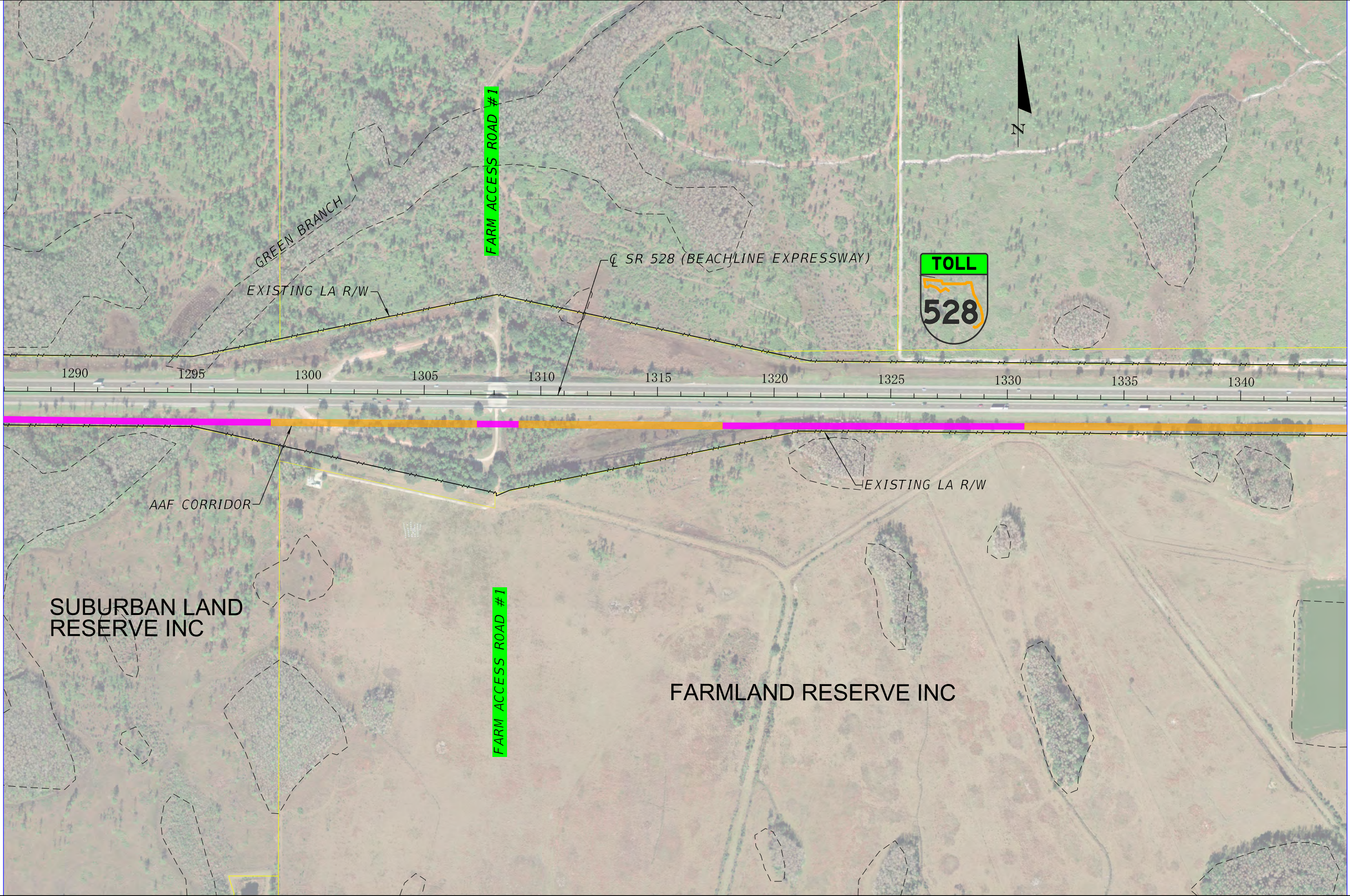
EXPLANATION OF FEATURES			
<div></div> AAF AT GRADE (≤8')	<div></div> AAF BRIDGE	<div></div> PROPOSED POND BY AAF	
<div></div> AAF ABOVE GRADE (>8')	<div></div> ROADWAY BRIDGE	<div></div> PROPOSED (ULTIMATE) POND BY OCEA OR FDOT	
<div></div> AAF IN BOX SECTION	<div></div> EXIST POND	<div></div> PROPOSED ROW (AAF)	
		<div></div> WETLAND BOUNDARY	

AAF RAILWAY AT OCEA ALTERNATIVE A

ALL ABOARD FLORIDA INTERCITY PASSENGER RAIL PROJECT

0100400 FT

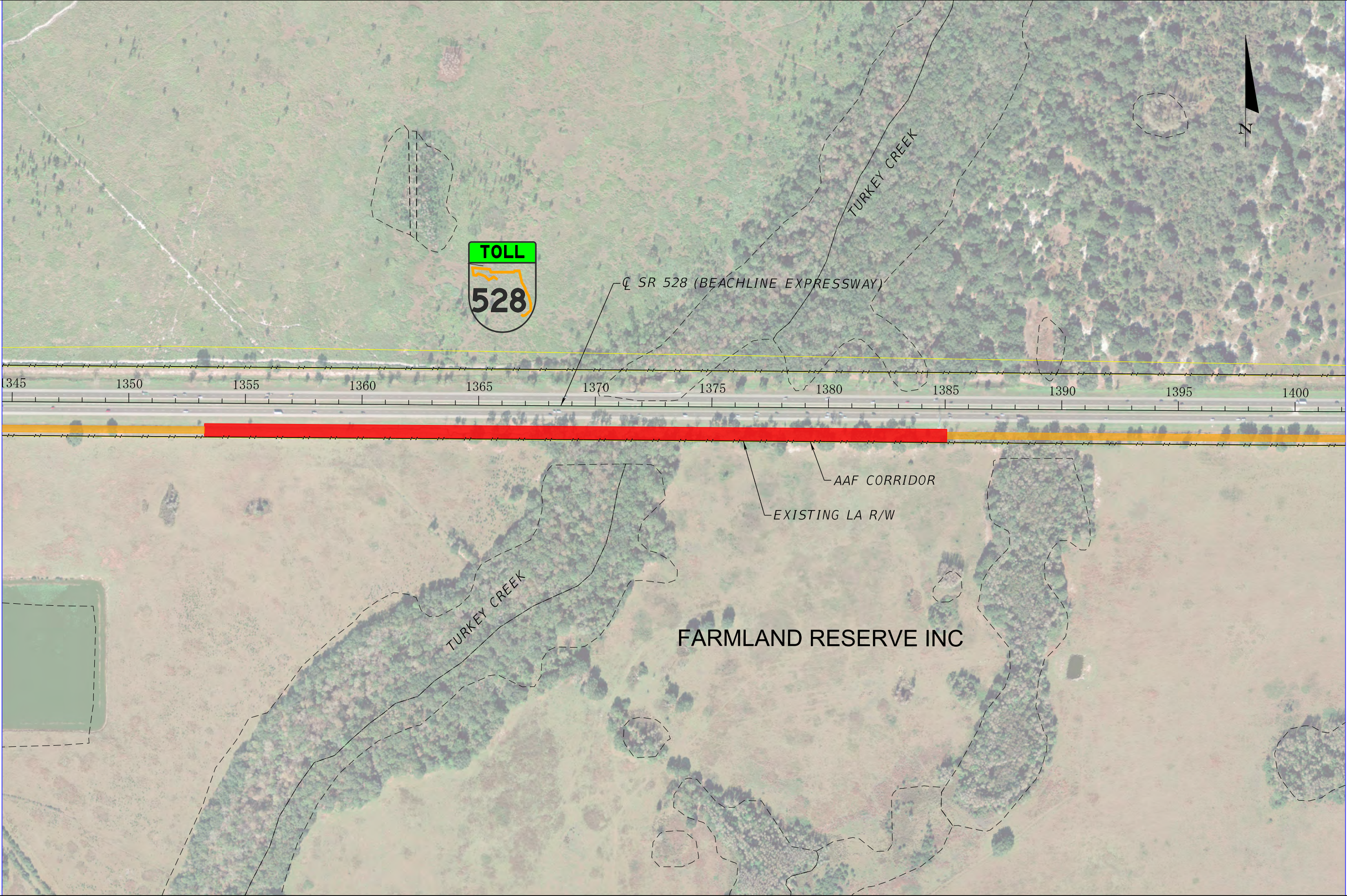
hnguyen10/24/136:07:56 PMC:\caddlib\pw\pwsouth east\pw\hnguyen\dms98337\PLANRD409.DGN



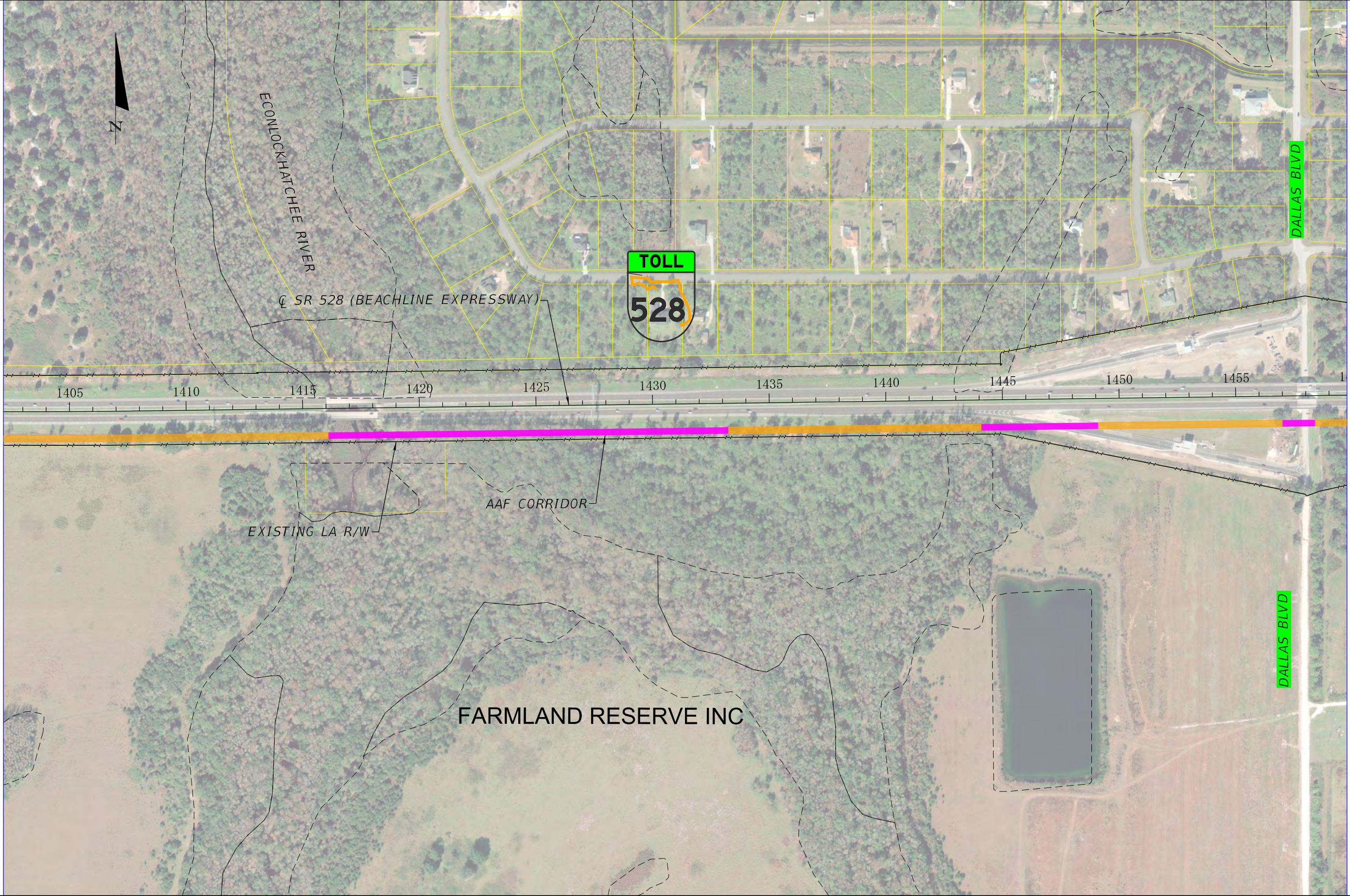
EXPLANATION OF FEATURES			
<div></div> AAF AT GRADE (≤8')	<div></div> AAF BRIDGE	<div></div> PROPOSED POND BY AAF	
<div></div> AAF ABOVE GRADE (>8')	<div></div> ROADWAY BRIDGE	<div></div> PROPOSED (ULTIMATE) POND BY OCEA OR FDOT	
<div></div> AAF IN BOX SECTION	<div></div> EXIST POND	<div></div> PROPOSED ROW (AAF)	
		<div></div> WETLAND BOUNDARY	

AAF RAILWAY AT OCEA ALTERNATIVE A		
ALL ABOARD FLORIDA INTERCITY PASSENGER RAIL PROJECT		
<div>0 100 400 FT</div>	<div> U.S Department of Transportation Federal Railroad Administration</div>	

hnguyen 10/24/13 6:08:27 PM C:\caddlib\pw\pwsouth\east\pw\hnguyen\dms98337\PLANRD410.DGN



EXPLANATION OF FEATURES			AAF RAILWAY AT OCEA ALTERNATIVE A	
			ALL ABOARD FLORIDA INTERCITY PASSENGER RAIL PROJECT	
AAF AT GRADE (≤8')	AAF BRIDGE	PROPOSED POND BY AAF		
AAF ABOVE GRADE (>8')	ROADWAY BRIDGE	PROPOSED (ULTIMATE) POND BY OCEA OR FDOT		
AAF IN BOX SECTION	EXIST POND	PROPOSED ROW (AAF)		
		WETLAND BOUNDARY		



EXPLANATION OF FEATURES			
<div></div>	AAF AT GRADE (≤8')	<div></div>	AAF BRIDGE
<div></div>	AAF ABOVE GRADE (>8')	<div></div>	ROADWAY BRIDGE
<div></div>	AAF IN BOX SECTION	<div></div>	EXIST POND
		<div></div>	PROPOSED POND BY AAF
		<div></div>	PROPOSED (ULTIMATE) POND BY OCEA OR FDOT
		<div></div>	PROPOSED ROW (AAF)
		<div></div>	WETLAND BOUNDARY

0100400 FT

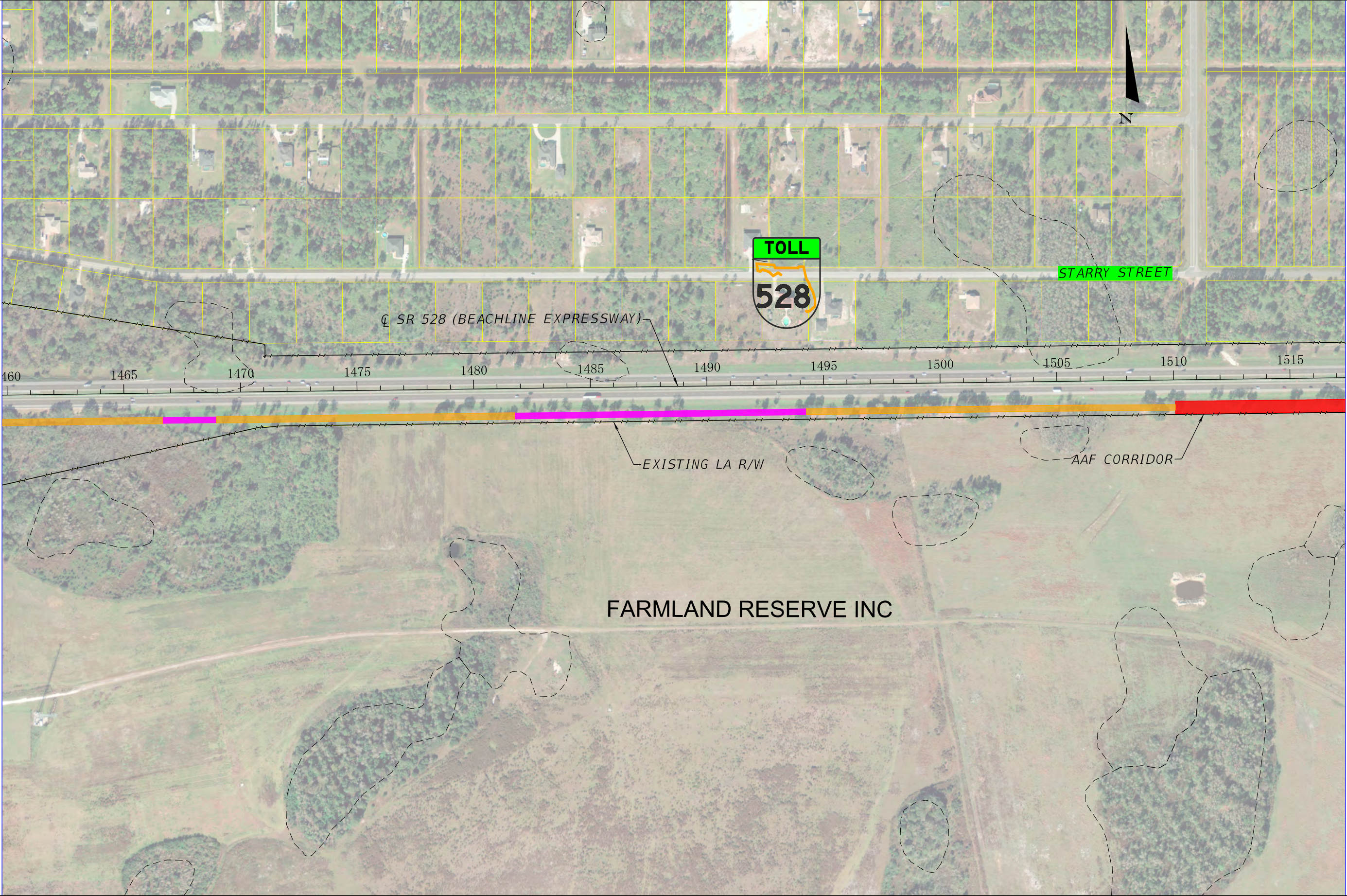
U.S Department of Transportation
Federal Railroad Administration

AAF RAILWAY AT OCEA ALTERNATIVE A

ALL ABOARD FLORIDA INTERCITY PASSENGER RAIL PROJECT

hnguyen10/24/136:11:05 PM

C:\caddlib\pw\pwsouth east\pw\hnguyen\dms98337\PLANRD412.DGN



EXPLANATION OF FEATURES

- AAF AT GRADE ($\leq 8'$)
- AAF ABOVE GRADE ($> 8'$)
- AAF IN BOX SECTION

- AAF BRIDGE
- ROADWAY BRIDGE
- EXIST POND

- PROPOSED POND BY AAF
- PROPOSED (ULTIMATE) POND BY OCEA OR FDOT
- PROPOSED ROW (AAF)
- WETLAND BOUNDARY

AAF RAILWAY AT OCEA ALTERNATIVE A
ALL ABOARD FLORIDA INTERCITY PASSENGER RAIL PROJECT

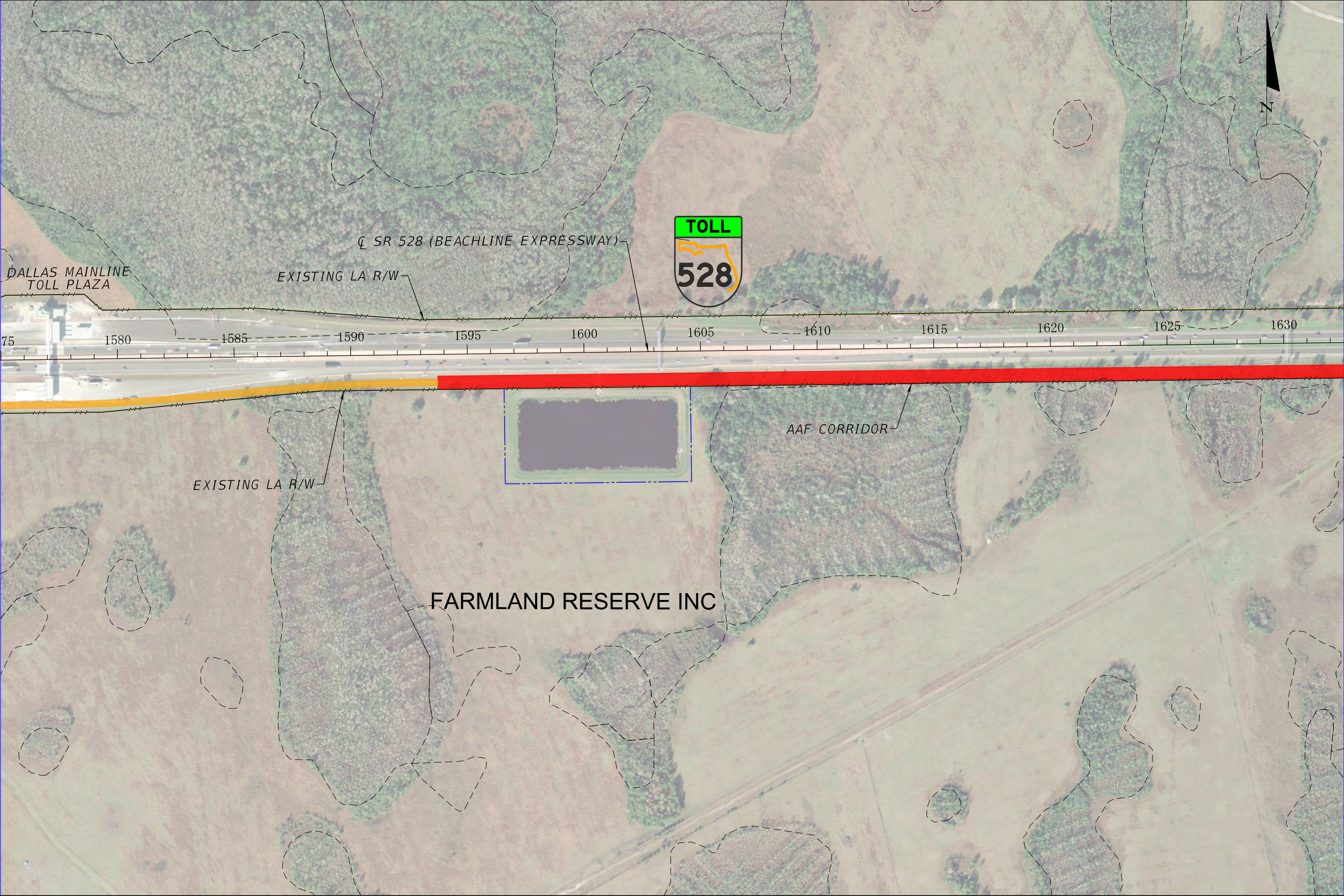


U.S Department of Transportation
Federal Railroad Administration

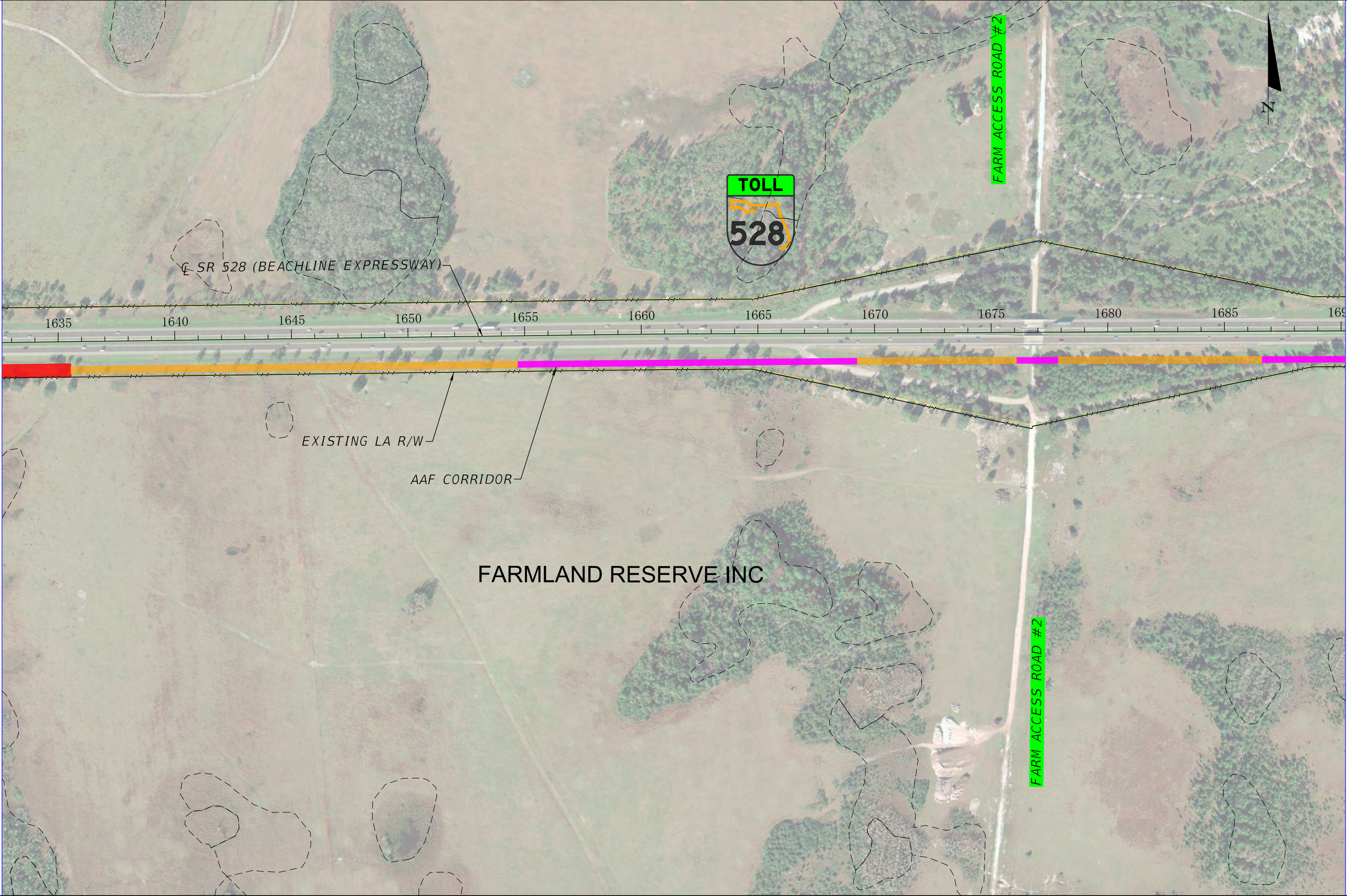


EXPLANATION OF FEATURES			
	AAF AT GRADE (≤8')		AAF BRIDGE
	AAF ABOVE GRADE (>8')		ROADWAY BRIDGE
	AAF IN BOX SECTION		EXIST POND
	PROPOSED POND BY AAF		WETLAND BOUNDARY
	PROPOSED (ULTIMATE) POND BY OCEA OR FDOT		
	PROPOSED ROW (AAF)		

AAF RAILWAY AT OCEA ALTERNATIVE A		
ALL ABOARD FLORIDA INTERCITY PASSENGER RAIL PROJECT		
		U.S. Department of Transportation Federal Railroad Administration
hnguyen	10/24/13	6:12:06 PM
C:\caddlib\pw\pwsouth\east\pw\hnguyen\dms98337\PLANRD414.DGN		



EXPLANATION OF FEATURES			AAF RAILWAY AT OOCEA ALTERNATIVE A		
			ALL ABOARD FLORIDA INTERCITY PASSENGER RAIL PROJECT		
<div></div> AAF AT GRADE ($\leq 8'$)	<div></div> AAF BRIDGE	<div></div> PROPOSED POND BY AAF	<div>0 100 400 FT</div>		
<div></div> AAF ABOVE GRADE ($> 8'$)	<div></div> ROADWAY BRIDGE	<div></div> PROPOSED (ULTIMATE) POND BY OOCEA OR FDOT			
<div></div> AAF IN BOX SECTION	<div></div> EXIST POND	<div></div> PROPOSED ROW (AAF)	<div></div> <div>U.S Department of Transportation Federal Railroad Administration</div>		
<div></div> WETLAND BOUNDARY					



EXPLANATION OF FEATURES

- AAF AT GRADE ($\leq 8'$)
- AAF ABOVE GRADE ($> 8'$)
- AAF IN BOX SECTION

- AAF BRIDGE
- ROADWAY BRIDGE
- EXIST POND

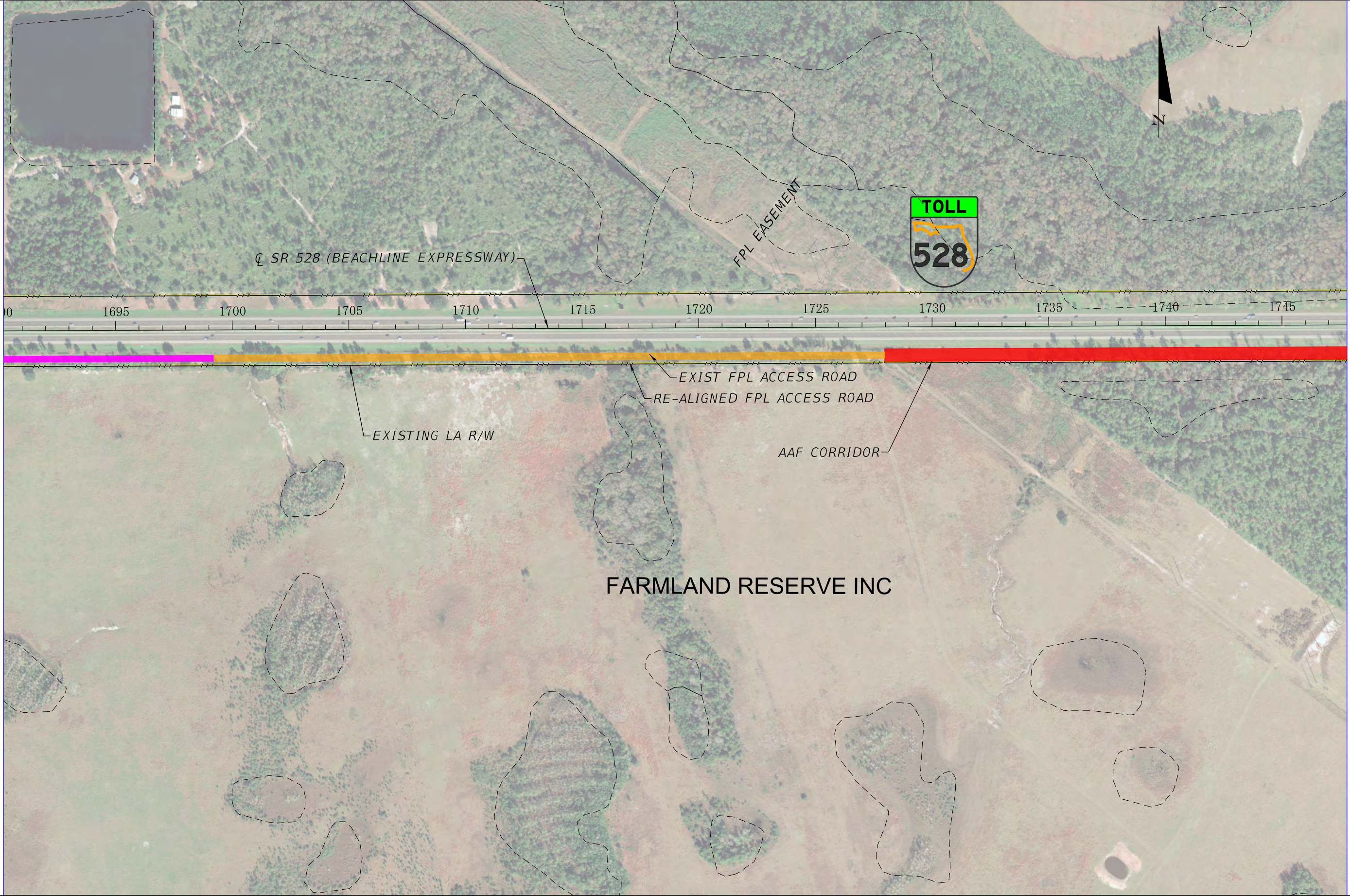
- PROPOSED POND BY AAF
- PROPOSED (ULTIMATE) POND BY OCEA OR FDOT
- PROPOSED ROW (AAF)
- WETLAND BOUNDARY

AAF RAILWAY AT OCEA ALTERNATIVE A

ALL ABOARD FLORIDA INTERCITY PASSENGER RAIL PROJECT



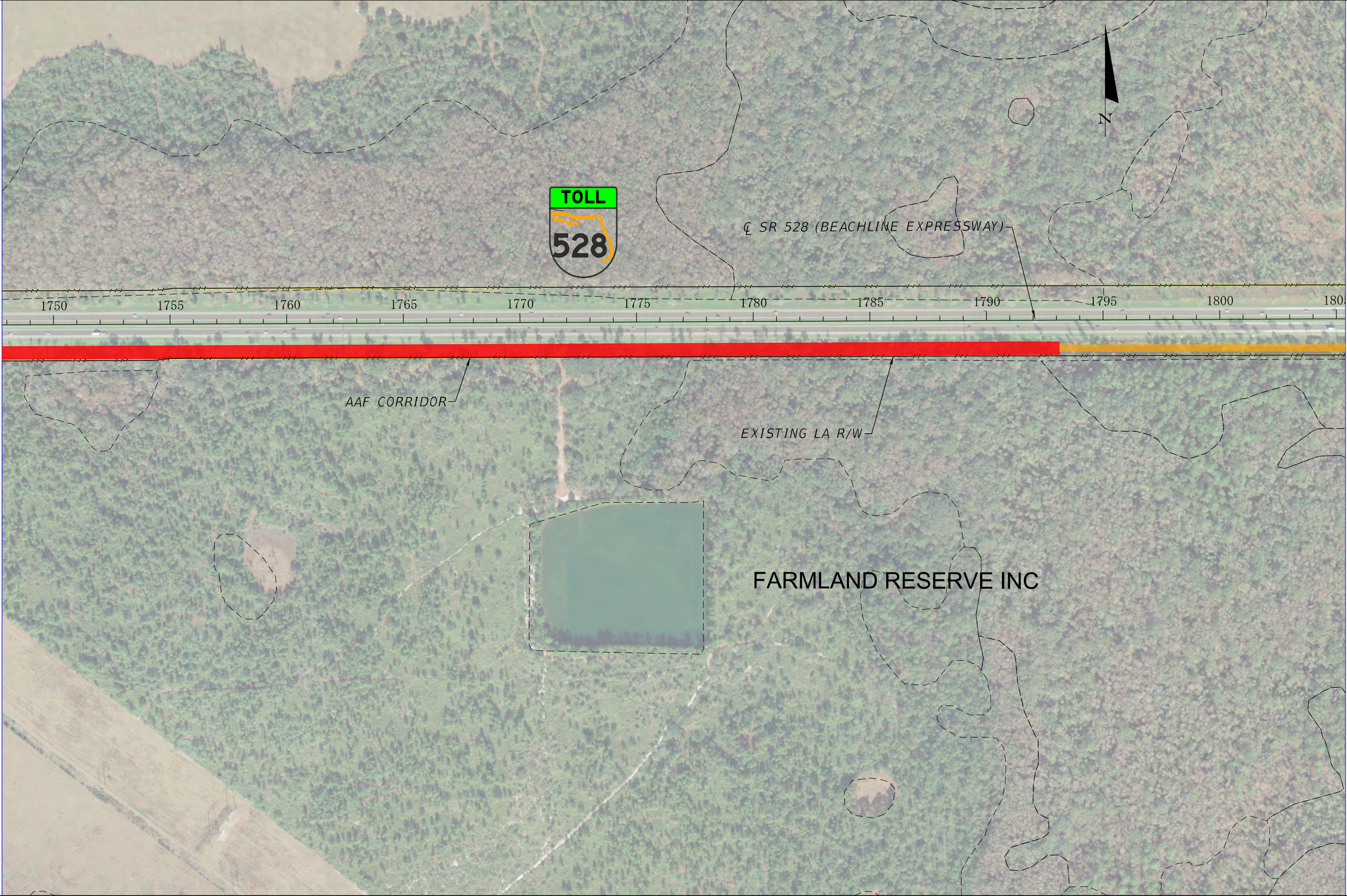
U.S Department of Transportation
Federal Railroad Administration



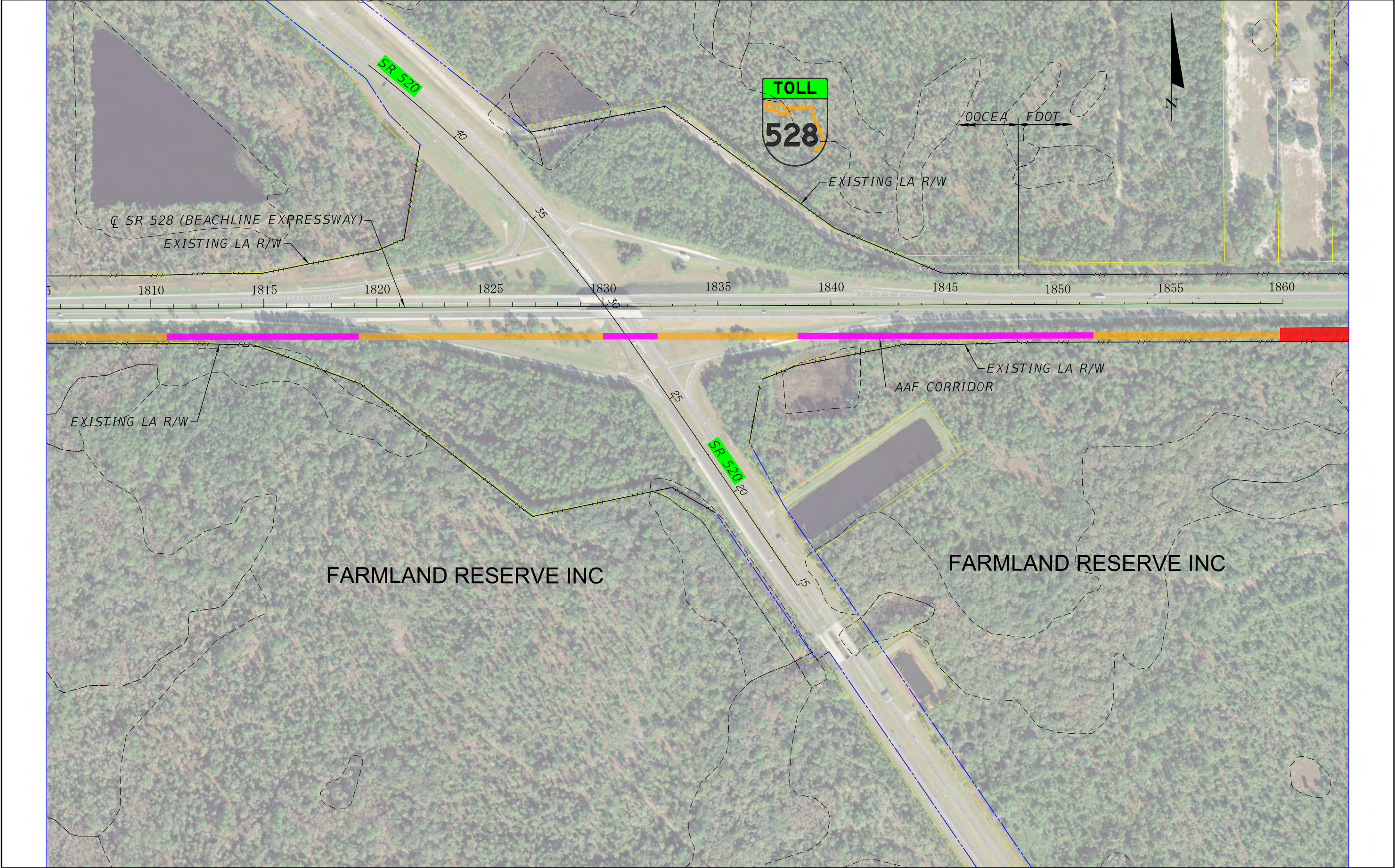
EXPLANATION OF FEATURES			
<div></div> AAF AT GRADE ($\leq 8'$)	<div></div> AAF BRIDGE	<div></div> PROPOSED POND BY AAF	
<div></div> AAF ABOVE GRADE ($> 8'$)	<div></div> ROADWAY BRIDGE	<div></div> PROPOSED (ULTIMATE) POND BY OCEA OR FDOT	
<div></div> AAF IN BOX SECTION	<div></div> EXIST POND	<div></div> PROPOSED ROW (AAF)	
		<div></div> WETLAND BOUNDARY	













AAF RAILWAY AT OCEA ALTERNATIVE A		
ALL ABOARD FLORIDA INTERCITY PASSENGER RAIL PROJECT		
<div>0 100 400 FT</div>	<div> U.S Department of Transportation Federal Railroad Administration</div>	

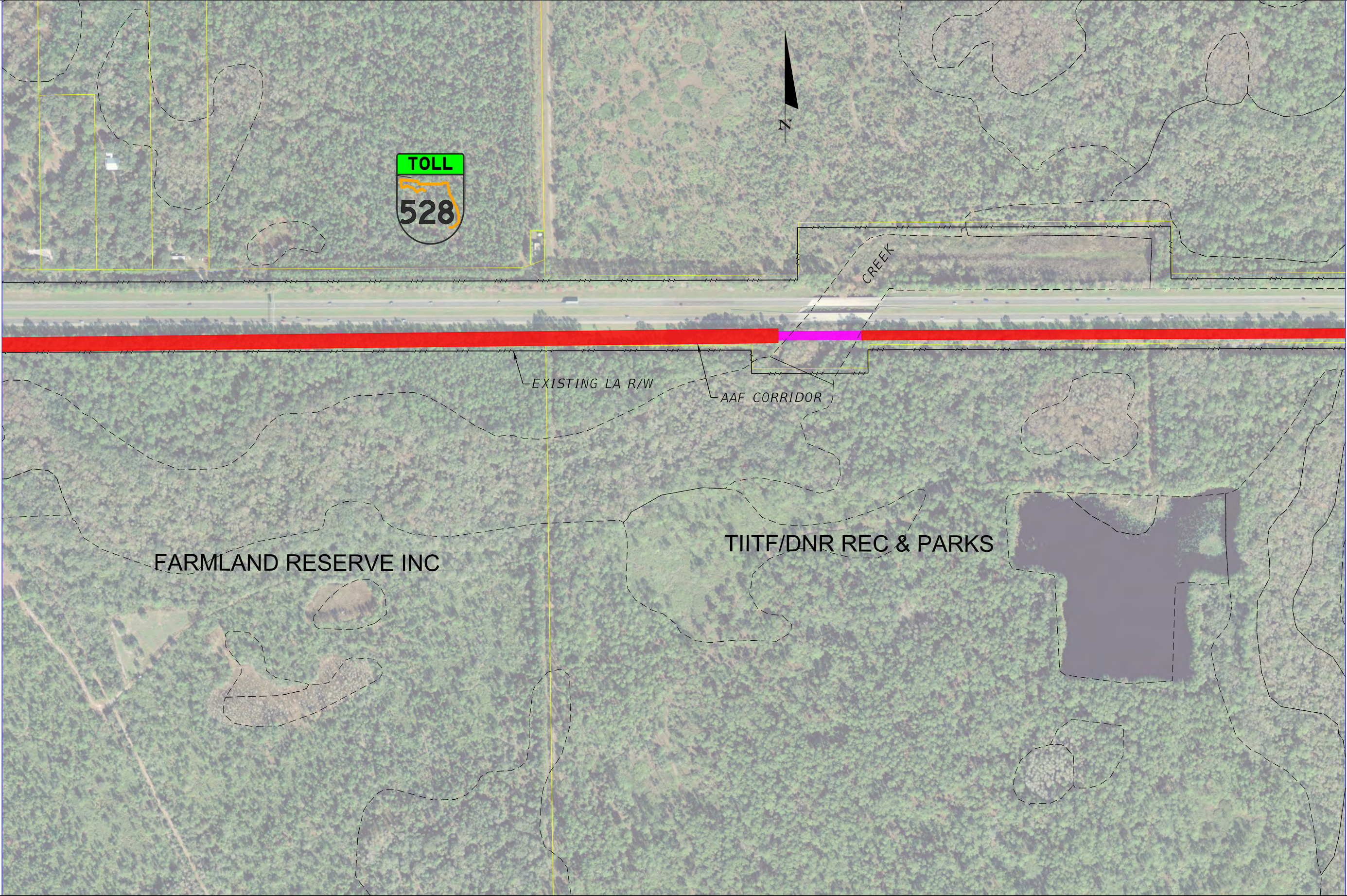
hnguyen 10/24/13 6:13:41 PM C:\caddlib\pw\pwsouth east\pw\hnguyen\dms98337\PLANRD417.DGN



EXPLANATION OF FEATURES				AAF RAILWAY AT OCEA ALTERNATIVE A		
				ALL ABOARD FLORIDA INTERCITY PASSENGER RAIL PROJECT		
<div></div> AAF AT GRADE (≤8')	<div></div> AAF BRIDGE	<div></div> PROPOSED POND BY AAF	<div></div> PROPOSED (ULTIMATE) POND BY OCEA OR FDOT	<div>0 100 400 FT</div>	<div></div>	
<div></div> AAF ABOVE GRADE (>8')	<div></div> ROADWAY BRIDGE	<div></div> PROPOSED ROW (AAF)	<div></div> WETLAND BOUNDARY			
<div></div> AAF IN BOX SECTION	<div></div> EXIST POND					



EXPLANATION OF FEATURES			AAF RAILWAY AT OCEA ALTERNATIVE A		
			ALL ABOARD FLORIDA INTERCITY PASSENGER RAIL PROJECT		
	AAF AT GRADE ($\leq 8'$)		AAF BRIDGE		PROPOSED POND BY AAF
	AAF ABOVE GRADE ($> 8'$)		ROADWAY BRIDGE		PROPOSED (ULTIMATE) POND BY OCEA OR FDOT
	AAF IN BOX SECTION		EXIST POND		PROPOSED ROW (AAF)
			 WETLAND BOUNDARY		
					
					



EXPLANATION OF FEATURES

- AAF AT GRADE ($\leq 8'$)
- AAF ABOVE GRADE ($> 8'$)
- AAF IN BOX SECTION

- AAF BRIDGE
- ROADWAY BRIDGE
- EXIST POND

- PROPOSED POND BY AAF
- PROPOSED (ULTIMATE) POND BY OCEA OR FDOT
- PROPOSED ROW (AAF)
- WETLAND BOUNDARY

AAF RAILWAY AT OCEA ALTERNATIVE A
ALL ABOARD FLORIDA INTERCITY PASSENGER RAIL PROJECT



U.S Department of Transportation
Federal Railroad Administration