

Explanation of Features

- Severe Impact Noise
- Moderate Impact Noise
- Vibration Impact
- County Boundary
- AAF Railway Line

Data Sources: ESRI 2012, FRA 2012, FGDL 2012, AMEC 2013

Palm Beach County Inventory of Noise and Vibration Impacts		
All Aboard Florida Intercity Passenger Rail Project		
<p>N</p> <p>0 1,500 3,000 Feet</p>	<p>U.S. Department of Transportation Federal Railroad Administration</p>	<p>Figure 5-1</p>

Path: H:\CSX\Florida_Noise_and_Vibration_Analysis\Task1\MXD\Noise_and_Vibration_Contour_Map_FRA.mxd Project # 6063-12-0212



Explanation of Features	
	Severe Impact Noise
	Moderate Impact Noise
	Vibration Impact
	County Boundary
	AAF Railway Line

Data Sources: ESRI 2012, FRA 2012, FGDL 2012, AMEC 2013

Palm Beach County Inventory of Noise and Vibration Impacts		
All Aboard Florida Intercity Passenger Rail Project		
 		Figure 5-2

Path: H:\CSXiFlorida_Noise_and_Vibration_Analysis\Task1\MXD\Noise_and_Vibration_Contour_Map_FRA.mxd Project # 6063-12-0212



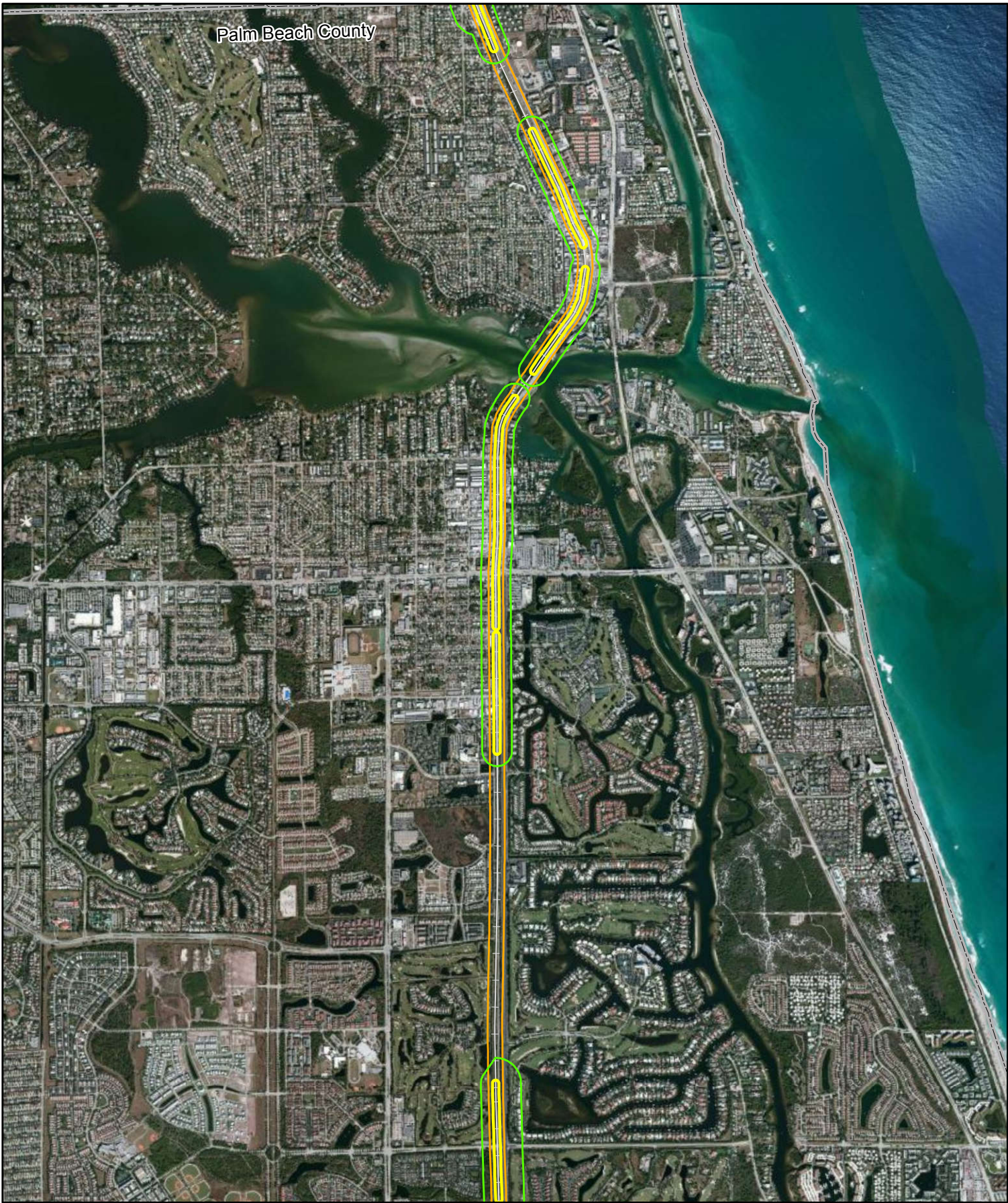
Explanation of Features

- Severe Impact Noise
- Moderate Impact Noise
- Vibration Impact
- County Boundary
- AAF Railway Line

Data Sources: ESRI 2012, FRA 2012, FGDL 2012, AMEC 2013

Palm Beach County Inventory of Noise and Vibration Impacts		
All Aboard Florida Intercity Passenger Rail Project		
<div style="display: flex; align-items: center;"> <div style="margin-right: 10px;"> <p>N</p> </div> <div> <p>0 1,500 3,000 Feet</p> </div> </div>	<p>U.S. Department of Transportation Federal Railroad Administration</p>	<p>Figure 5-3</p>

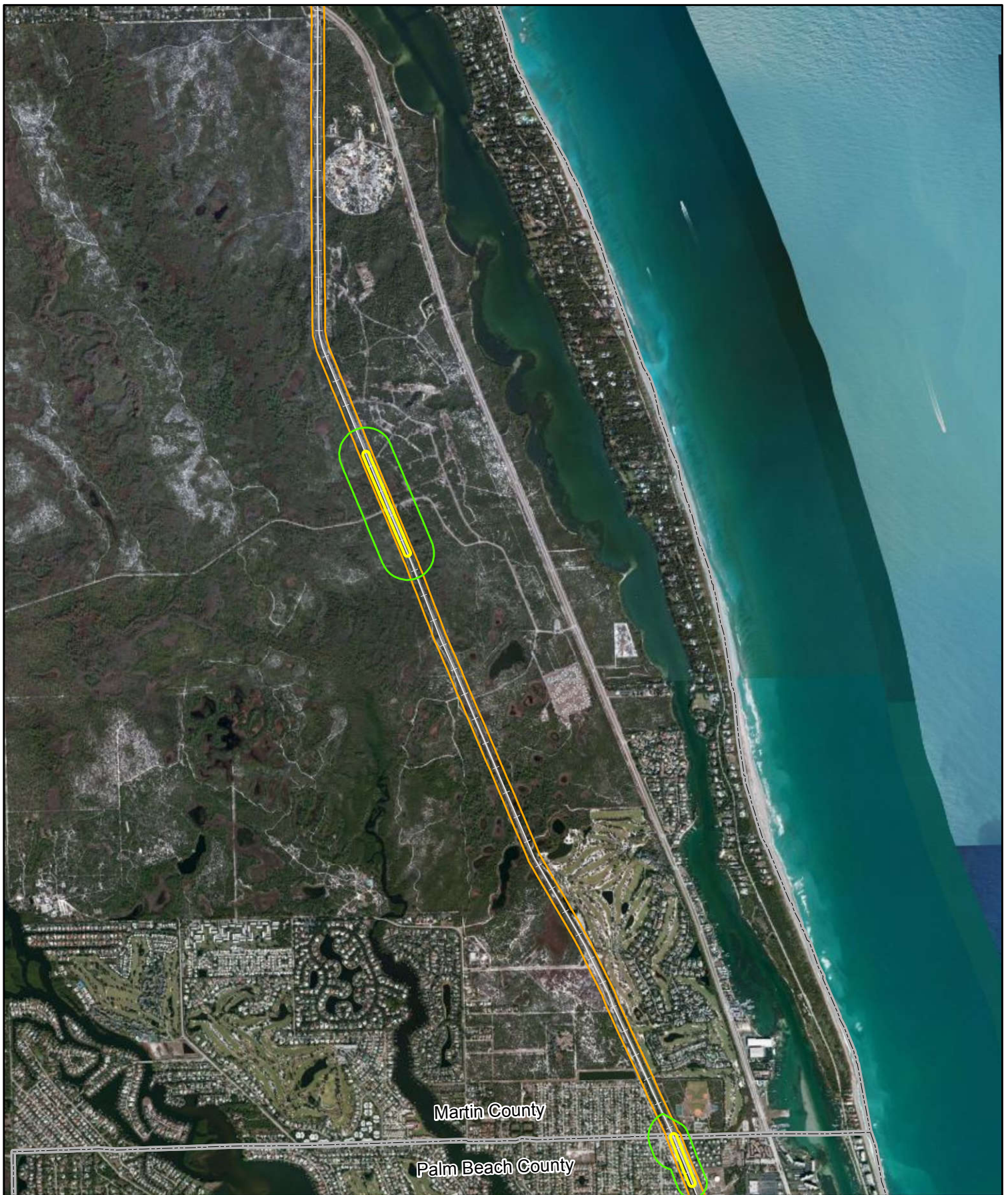
Path: H:\CSX\Florida_Noise_and_Vibration_Analysis\Task1\MXD\Noise_and_Vibration_Contour_Map_FRA.mxd Project # 6063-12-0212



Explanation of Features

- Severe Impact Noise
- Moderate Impact Noise
- Vibration Impact
- County Boundary
- AAF Railway Line

Palm Beach County Inventory of Noise and Vibration Impacts		
All Aboard Florida Intercity Passenger Rail Project		
<p>N</p> <p>0 1,500 3,000 Feet</p>	<p>U.S. Department of Transportation Federal Railroad Administration</p>	<p>Figure 5-4</p>



Explanation of Features	
	Severe Impact Noise
	Moderate Impact Noise
	Vibration Impact
	County Boundary
	AAF Railway Line

Data Sources: ESRI 2012, FRA 2012, FGDL 2012, AMEC 2013

Palm Beach / Martin County Inventory of Noise and Vibration Impacts		
All Aboard Florida Intercity Passenger Rail Project		
 		Figure 5-5

Path: H:\CSX\Florida_Noise_and_Vibration_Analysis\Task1\MXD\Noise_and_Vibration_Contour_Map_FRA.mxd Project # 6063-12-0212



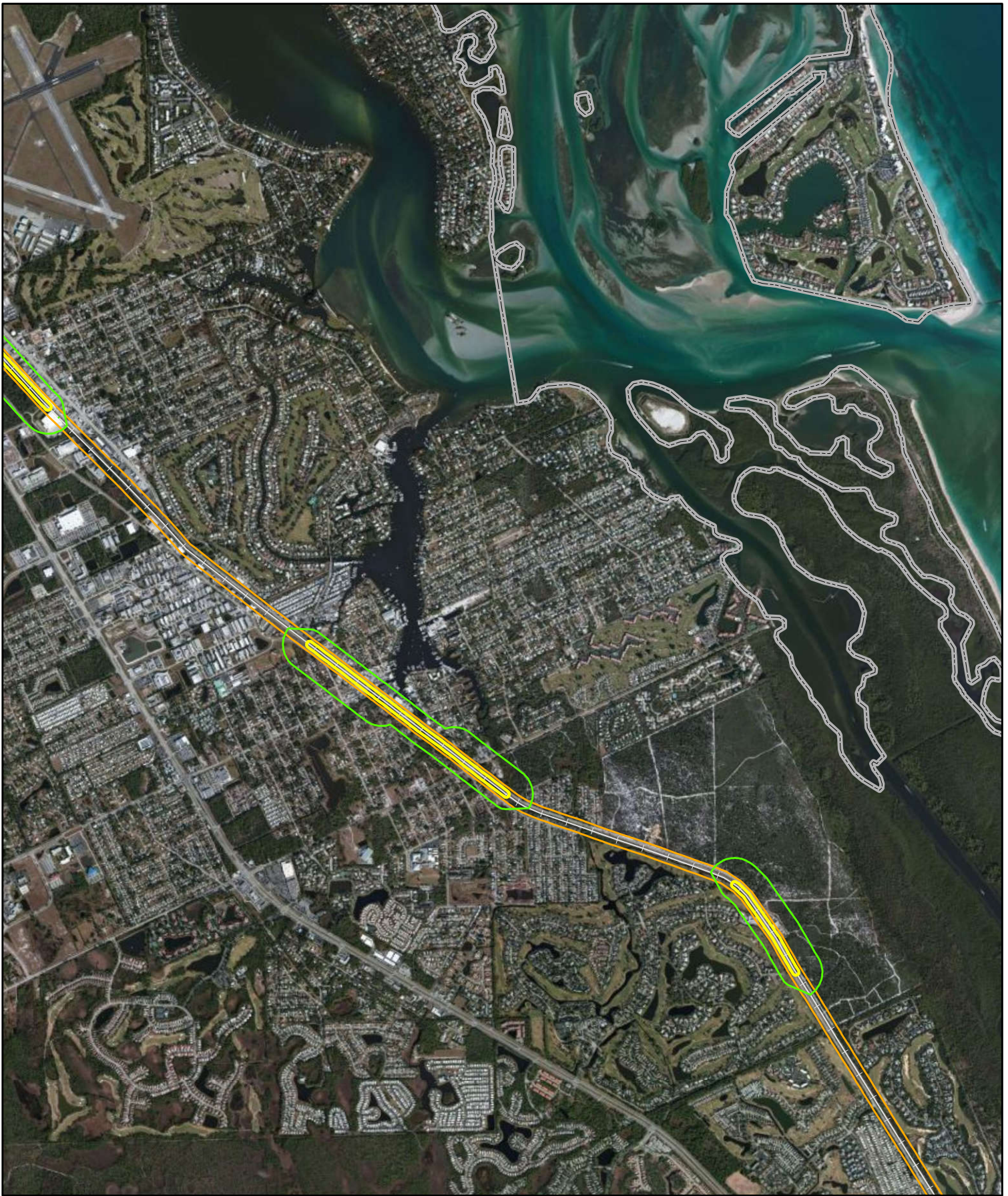
Explanation of Features

- Severe Impact Noise
- Moderate Impact Noise
- Vibration Impact
- County Boundary
- AAF Railway Line

Data Sources: ESRI 2012, FRA 2012, FGDL 2012, AMEC 2013

Martin County Inventory of Noise and Vibration Impacts		
All Aboard Florida Intercity Passenger Rail Project		
<p>N</p> <p>0 1,500 3,000 Feet</p>	<p>U.S. Department of Transportation Federal Railroad Administration</p>	<p>Figure 5-6</p>

Path: H:\CSX\Florida_Noise_and_Vibration_Analysis\Task1\MXD\Noise_and_Vibration_Contour_Map_FRA.mxd Project # 6063-12-0212



Explanation of Features

- Severe Impact Noise
- Moderate Impact Noise
- Vibration Impact
- County Boundary
- AAF Railway Line

Data Sources: ESRI 2012, FRA 2012, FGDL 2012, AMEC 2013

Martin County Inventory of Noise and Vibration Impacts		
All Aboard Florida Intercity Passenger Rail Project		
<div style="text-align: center;"> 0 1,500 3,000 Feet </div>	 <small>U.S. Department of Transportation Federal Railroad Administration</small>	Figure 5-7

Path: H:\CSX\Florida_Noise_and_Vibration_Analysis\Task1\MXD\Noise_and_Vibration_Contour_Map_FRA.mxd Project # 6063-12-0212



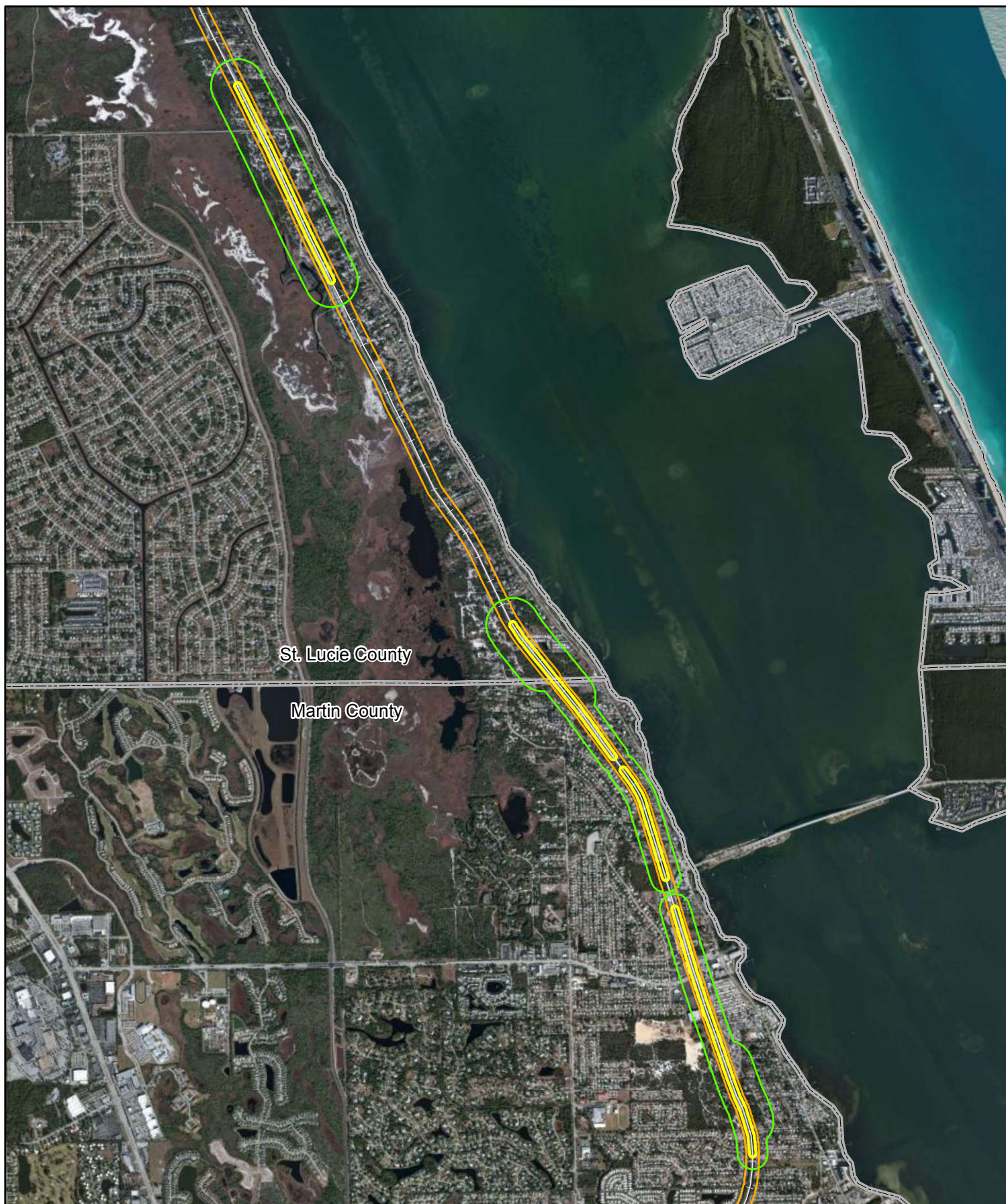
Explanation of Features

- Severe Impact Noise
- Moderate Impact Noise
- Vibration Impact
- County Boundary
- AAF Railway Line

Data Sources: ESRI 2012, FRA 2012, FGDL 2012, AMEC 2013

Martin County Inventory of Noise and Vibration Impacts		
All Aboard Florida Intercity Passenger Rail Project		
 0 1,500 3,000 Feet		Figure 5-8

Path: H:\CSX\Florida_Noise_and_Vibration_Analysis\Task1\MXD\Noise_and_Vibration_Contour_Map_FRA.mxd Project # 6063-12-0212

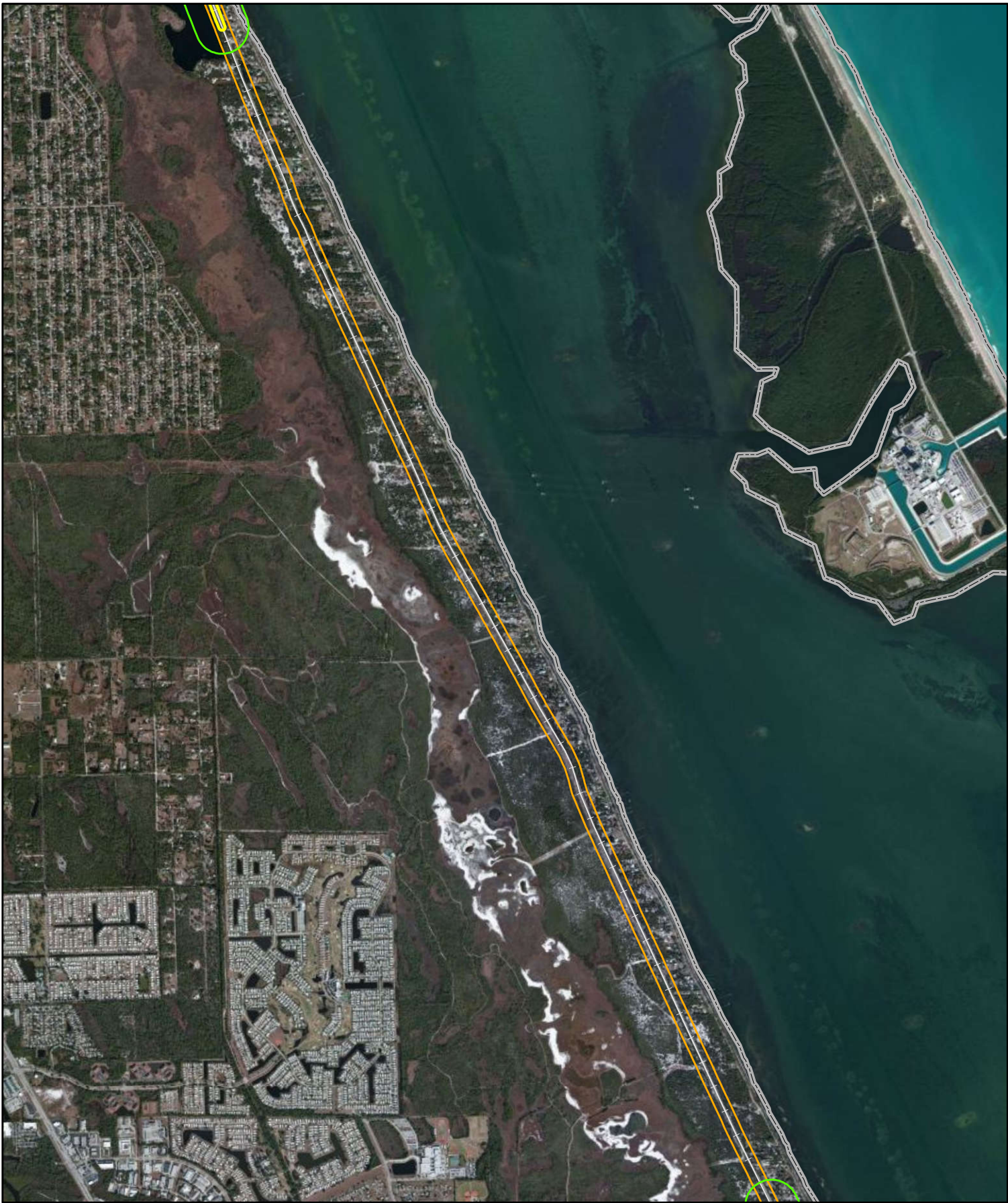


Explanation of Features	
 	Severe Impact Noise
 	Moderate Impact Noise
 	Vibration Impact
	County Boundary
	AAF Railway Line

Data Sources: ESRI 2012, FRA 2012, FGDL 2012, AMEC 2013

Martin / St. Lucie County Inventory of Noise and Vibration Impacts		
All Aboard Florida Intercity Passenger Rail Project		
<div style="text-align: center;"> 0 1,500 3,000 Feet </div>	 <small>U.S. Department of Transportation Federal Railroad Administration</small>	Figure 5-9

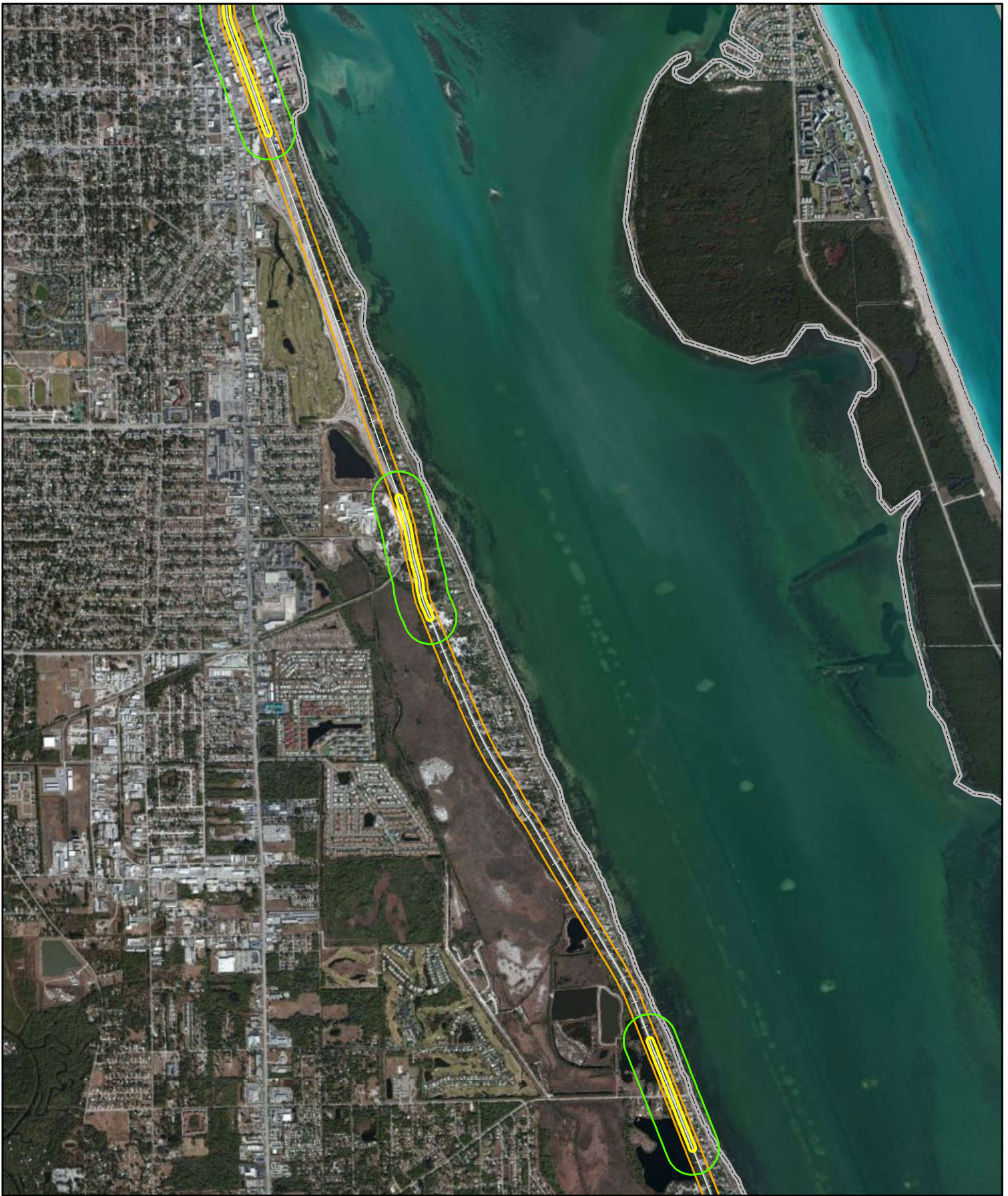
Path: H:\CSX\Florida_Noise_and_Vibration_Analysis\Task1\MXD\Noise_and_Vibration_Contour_Map_FRA.mxd Project # 6063-12-0212



Explanation of Features

- Severe Impact Noise
- Moderate Impact Noise
- Vibration Impact
- County Boundary
- AAF Railway Line

St. Lucie County Inventory of Noise and Vibration Impacts		
All Aboard Florida Intercity Passenger Rail Project		
<div style="text-align: center;"> 0 1,500 3,000 Feet </div>		Figure 5-10



Explanation of Features

- Severe Impact Noise
- Moderate Impact Noise
- Vibration Impact
- County Boundary
- AAF Railway Line

Data Sources: ESRI 2012, FRA 2012, FGDL 2012, AMEC 2013

<p>St. Lucie County Inventory of Noise and Vibration Impacts</p> <p>All Aboard Florida Intercity Passenger Rail Project</p>		
<p>N</p> <p>0 1,500 3,000 Feet</p>	<p>U.S. Department of Transportation</p> <p>Federal Railroad Administration</p>	<p>Figure 5-11</p>

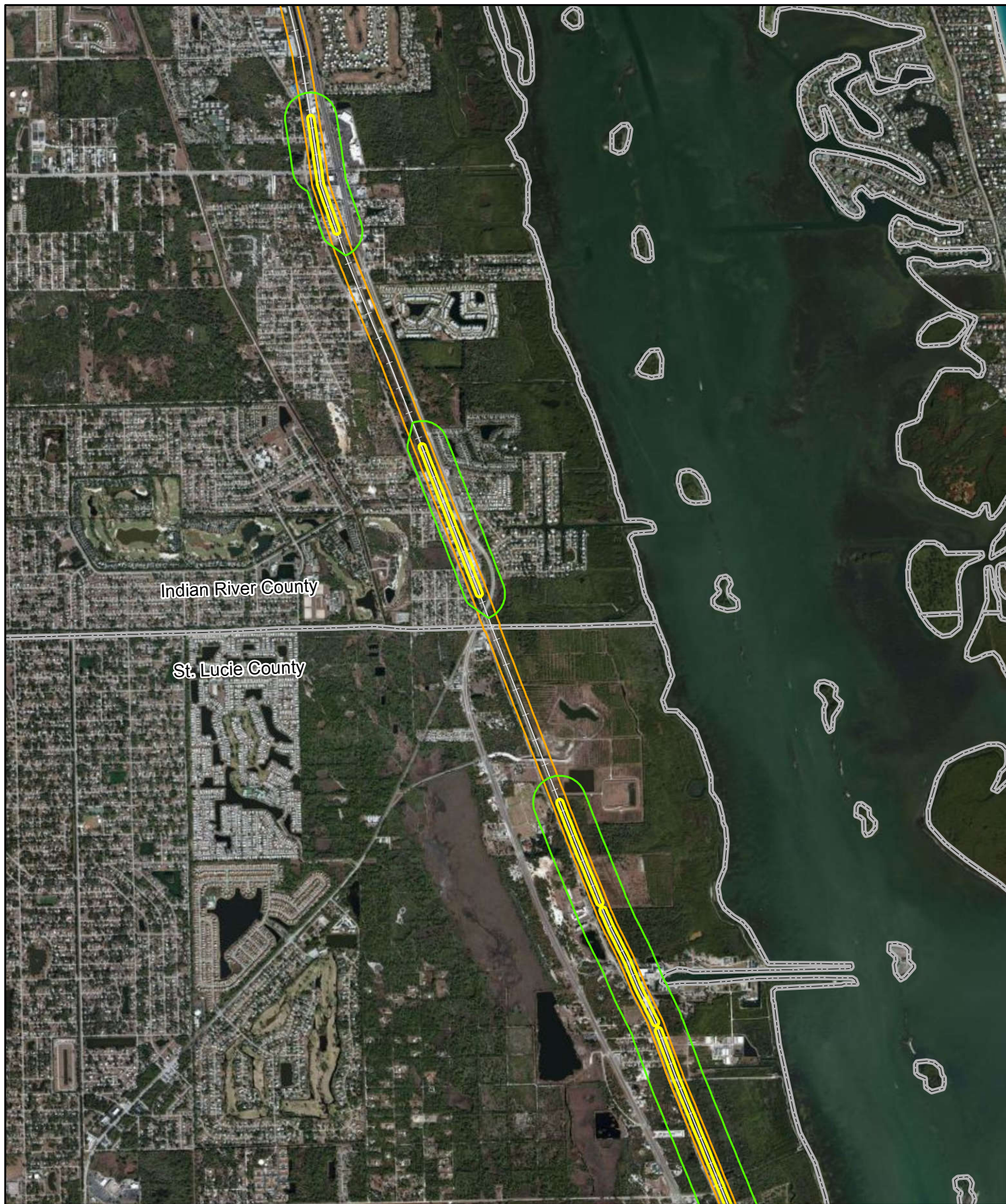
Path: H:\CSX\Florida\Noise_and_Vibration_Analysis\Task1\MXD\Noise_and_Vibration_Contour_Map_FRA.mxd Project # 6063-12-0212



Explanation of Features

- Severe Impact Noise
- Moderate Impact Noise
- Vibration Impact
- County Boundary
- AAF Railway Line

St. Lucie County Inventory of Noise and Vibration Impacts		
All Aboard Florida Intercity Passenger Rail Project		
 	 U.S. Department of Transportation Federal Railroad Administration	Figure 5-12



Explanation of Features	
	Severe Impact Noise
	Moderate Impact Noise
	Vibration Impact
	County Boundary
	AAF Railway Line

St. Lucie / Indian River County Inventory of Noise and Vibration Impacts

All Aboard Florida Intercity Passenger Rail Project



0 1,500 3,000 Feet



U.S. Department
of Transportation
**Federal Railroad
Administration**

**Figure
5-13**



Explanation of Features

- Severe Impact Noise
- Moderate Impact Noise
- Vibration Impact
- County Boundary
- AAF Railway Line

Indian River County Inventory of Noise and Vibration Impacts		
All Aboard Florida Intercity Passenger Rail Project		
<div style="text-align: center;"> 0 1,500 3,000 Feet </div>	 <small>U.S. Department of Transportation Federal Railroad Administration</small>	Figure 5-14



Explanation of Features

- Severe Impact Noise
- Moderate Impact Noise
- Vibration Impact
- County Boundary
- AAF Railway Line

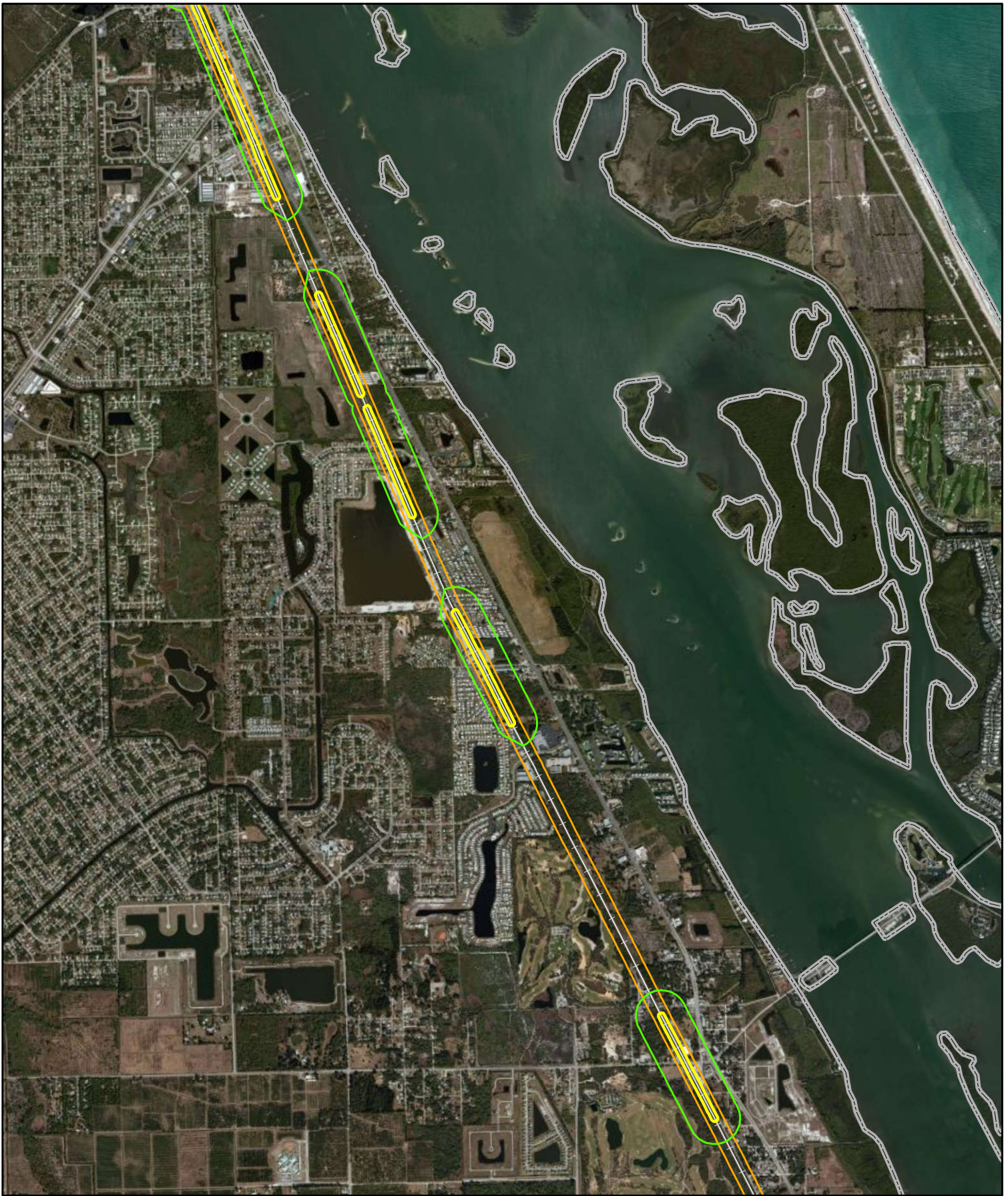
Data Sources: ESRI 2012, FRA 2012, FGDL 2012, AMEC 2013

Indian River County Inventory of Noise and Vibration Impacts

All Aboard Florida Intercity Passenger Rail Project

Figure 5-15

Path: H:\CSX\Florida_Noise_and_Vibration_Analysis\Task1\MXD\Noise_and_Vibration_Contour_Map_FRA.mxd Project # 6063-12-0212



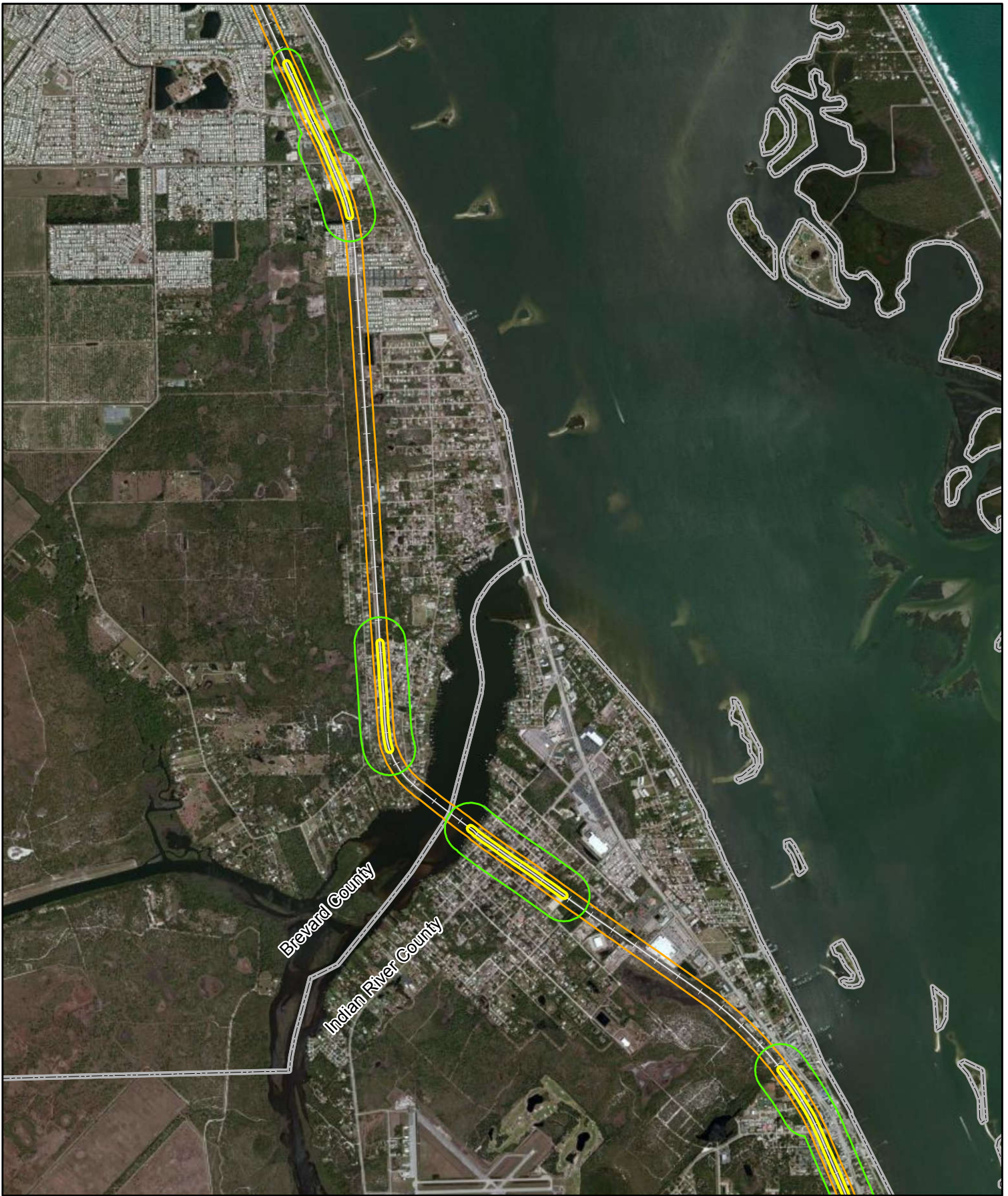
Explanation of Features

- Severe Impact Noise
- Moderate Impact Noise
- Vibration Impact
- County Boundary
- AAF Railway Line

Data Sources: ESRI 2012, FRA 2012, FGDL 2012, AMEC 2013

Indian River County Inventory of Noise and Vibration Impacts		
All Aboard Florida Intercity Passenger Rail Project		
 		Figure 5-16

Path: H:\CSXiFlorida_Noise_and_Vibration_Analysis\Task1\MXD\Noise_and_Vibration_Contour_Map_FRA.mxd Project # 6063-12-0212



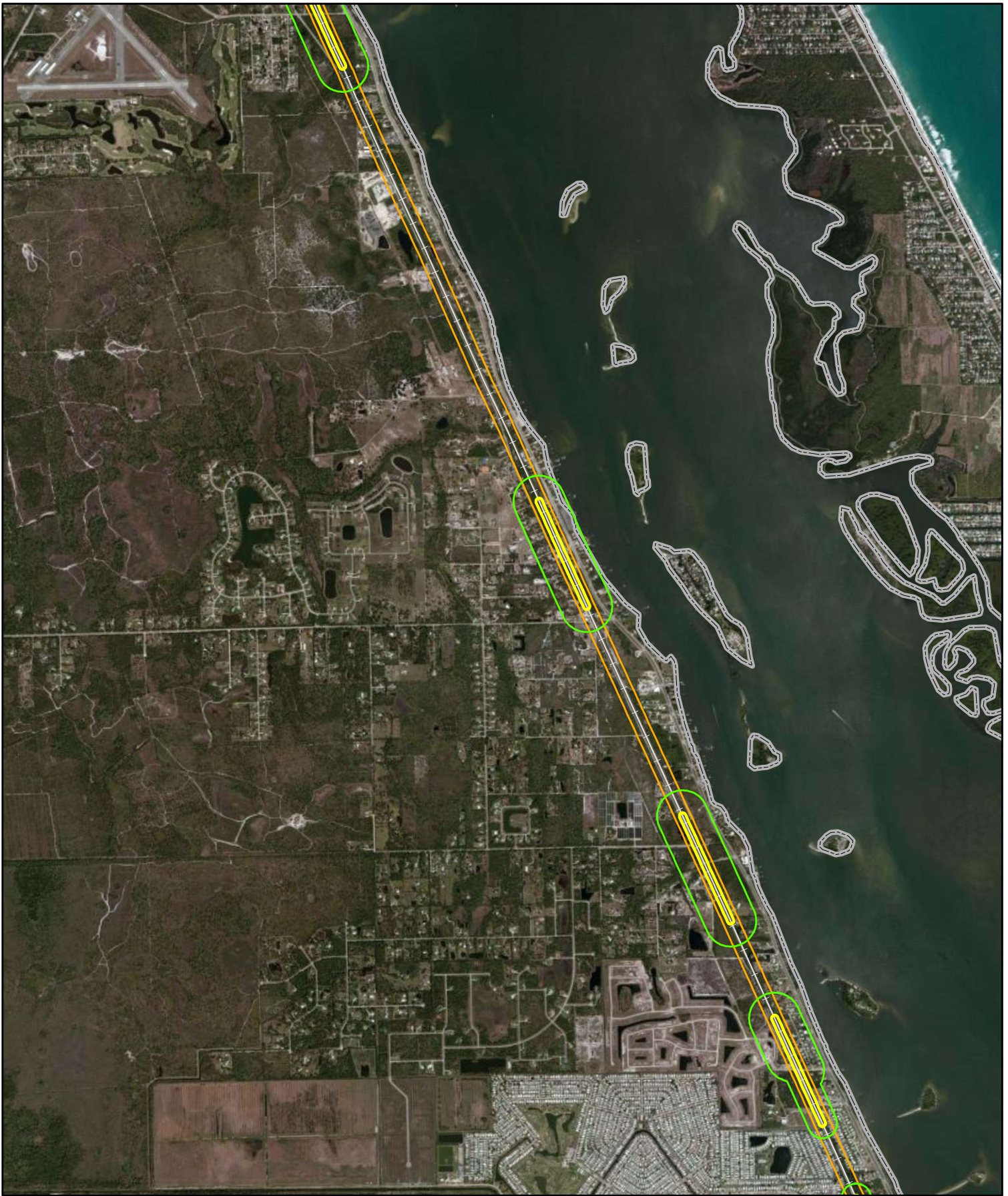
Explanation of Features

- Severe Impact Noise
- Moderate Impact Noise
- Vibration Impact
- County Boundary
- AAF Railway Line

Data Sources: ESRI 2012, FRA 2012, FGDL 2012, AMEC 2013

Indian River / Brevard County Inventory of Noise and Vibration Impacts		
All Aboard Florida Intercity Passenger Rail Project		
<p>N</p> <p>0 1,500 3,000 Feet</p>	<p>U.S. Department of Transportation Federal Railroad Administration</p>	<p>Figure 5-17</p>

Path: H:\CSX\Florida_Noise_and_Vibration_Analysis\Task1\MXD\Noise_and_Vibration_Contour_Map_FRA.mxd Project # 6063-12-0212



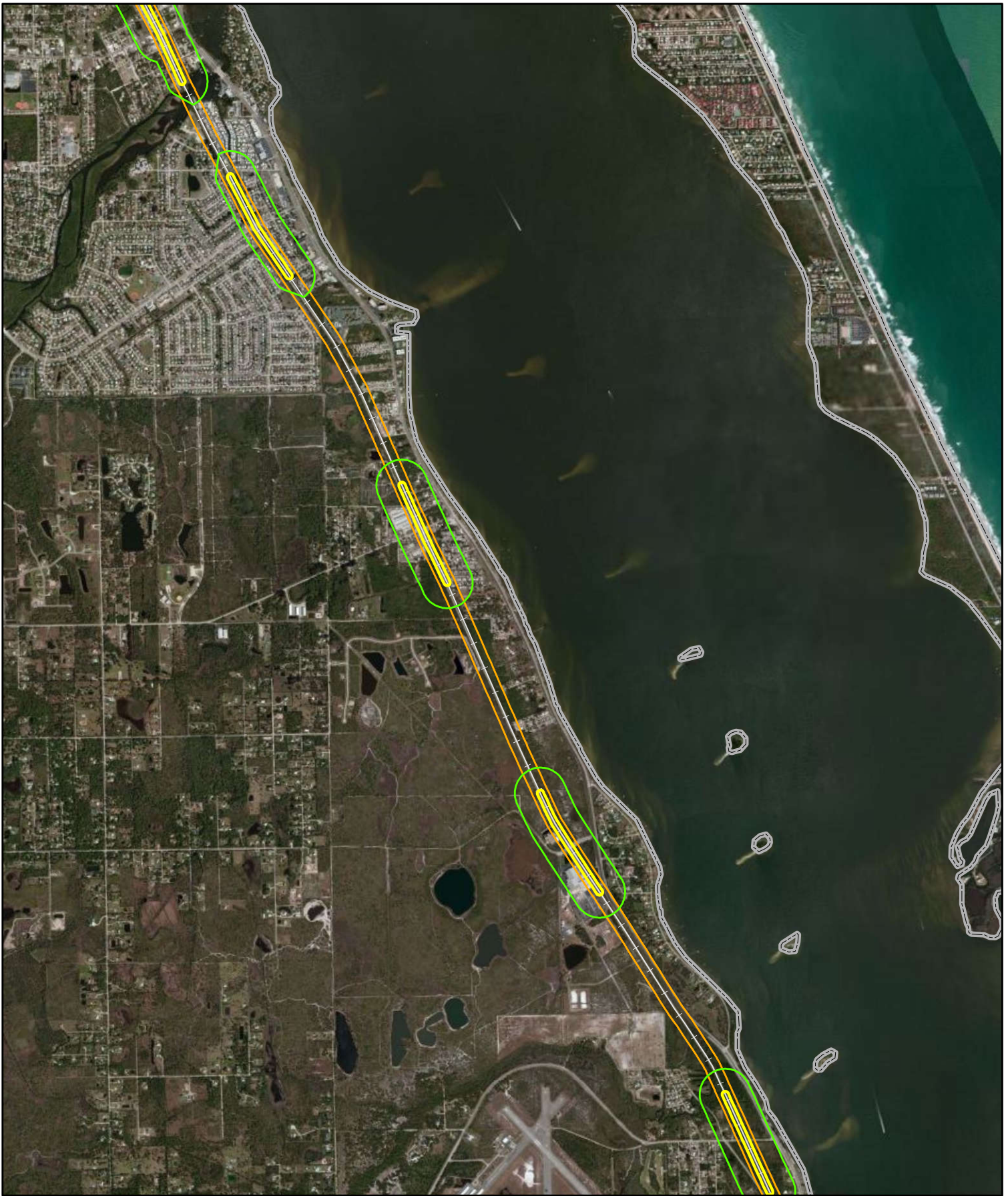
Explanation of Features

- Severe Impact Noise
- Moderate Impact Noise
- Vibration Impact
- County Boundary
- AAF Railway Line

Data Sources: ESRI 2012, FRA 2012, FGDL 2012, AMEC 2013

Brevard County Inventory of Noise and Vibration Impacts		
All Aboard Florida Intercity Passenger Rail Project		
<p>N</p> <p>0 1,500 3,000 Feet</p>	<p>U.S. Department of Transportation Federal Railroad Administration</p>	<p>Figure 5-18</p>

Path: H:\CSXiFlorida_Noise_and_Vibration_Analysis\Task1\MXD\Noise_and_Vibration_Contour_Map_FRA.mxd Project # 6063-12-0212



Explanation of Features

- Severe Impact Noise
- Moderate Impact Noise
- Vibration Impact
- County Boundary
- AAF Railway Line

Data Sources: ESRI 2012, FRA 2012, FGDL 2012, AMEC 2013

Brevard County Inventory of Noise and Vibration Impacts		
All Aboard Florida Intercity Passenger Rail Project		
<p>N</p> <p>0 1,500 3,000 Feet</p>	<p>U.S. Department of Transportation Federal Railroad Administration</p>	<p>Figure 5-19</p>

Path: H:\CSX\Florida_Noise_and_Vibration_Analysis\Task1\MXD\Noise_and_Vibration_Contour_Map_FRA.mxd Project # 6063-12-0212



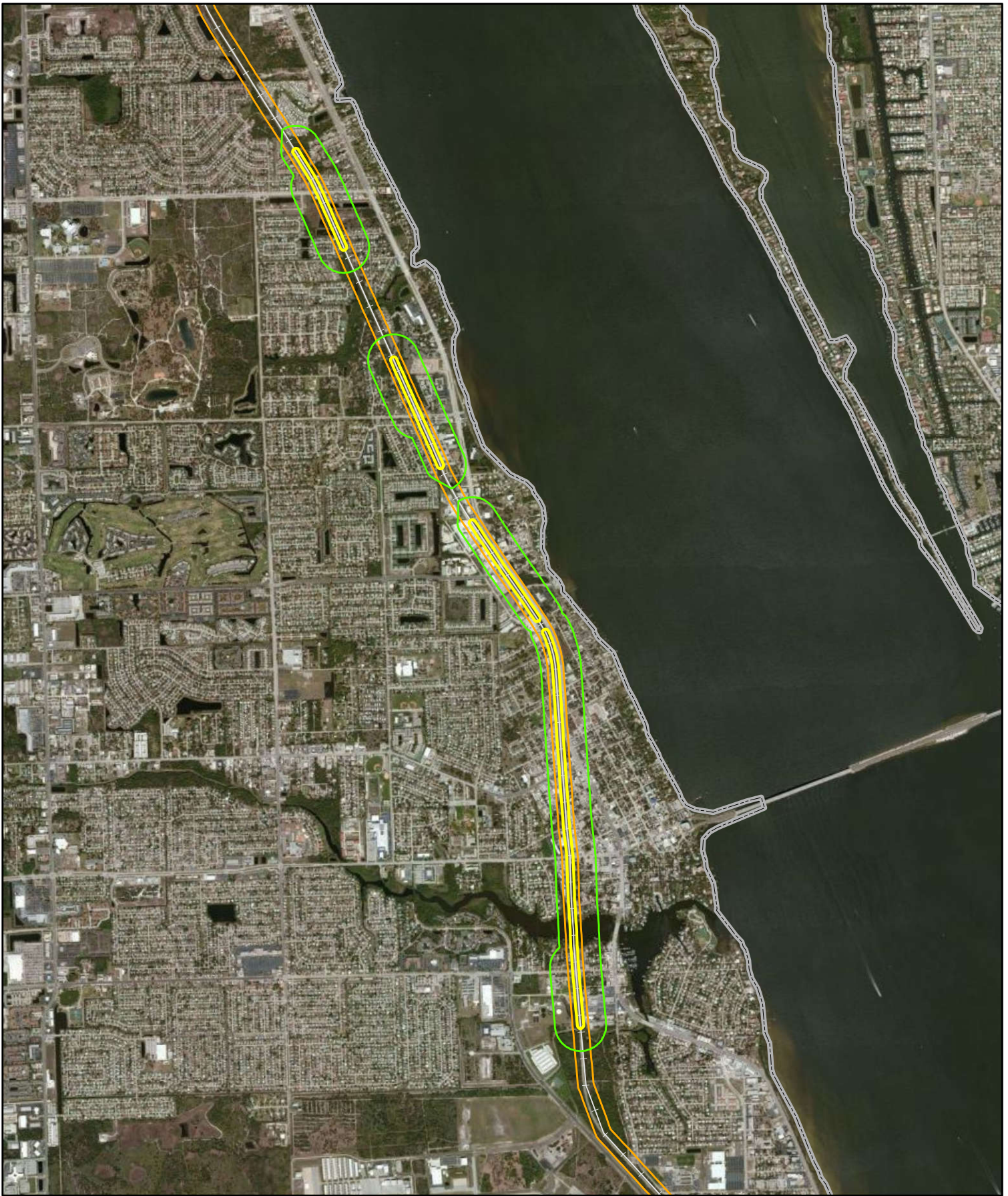
Explanation of Features

- Severe Impact Noise
- Moderate Impact Noise
- Vibration Impact
- County Boundary
- AAF Railway Line

Data Sources: ESRI 2012, FRA 2012, FGDL 2012, AMEC 2013

Brevard County Inventory of Noise and Vibration Impacts		
All Aboard Florida Intercity Passenger Rail Project		
<div style="text-align: center;"> 0 1,500 3,000 Feet </div>	<p>U.S. Department of Transportation Federal Railroad Administration</p>	Figure 5-20

Path: H:\CSX\Florida_Noise_and_Vibration_Analysis\Task1\MXD\Noise_and_Vibration_Contour_Map_FRA.mxd Project # 6063-12-0212



Explanation of Features

- Severe Impact Noise
- Moderate Impact Noise
- Vibration Impact
- County Boundary
- AAF Railway Line

Data Sources: ESRI 2012, FRA 2012, FGDL 2012, AMEC 2013

Brevard County Inventory of Noise and Vibration Impacts		
All Aboard Florida Intercity Passenger Rail Project		
<div style="text-align: center;"> 0 1,500 3,000 Feet </div>	 U.S. Department of Transportation Federal Railroad Administration	Figure 5-21

Path: H:\CSX\Florida_Noise_and_Vibration_Analysis\Task1\MXD\Noise_and_Vibration_Contour_Map_FRA.mxd Project # 6063-12-0212



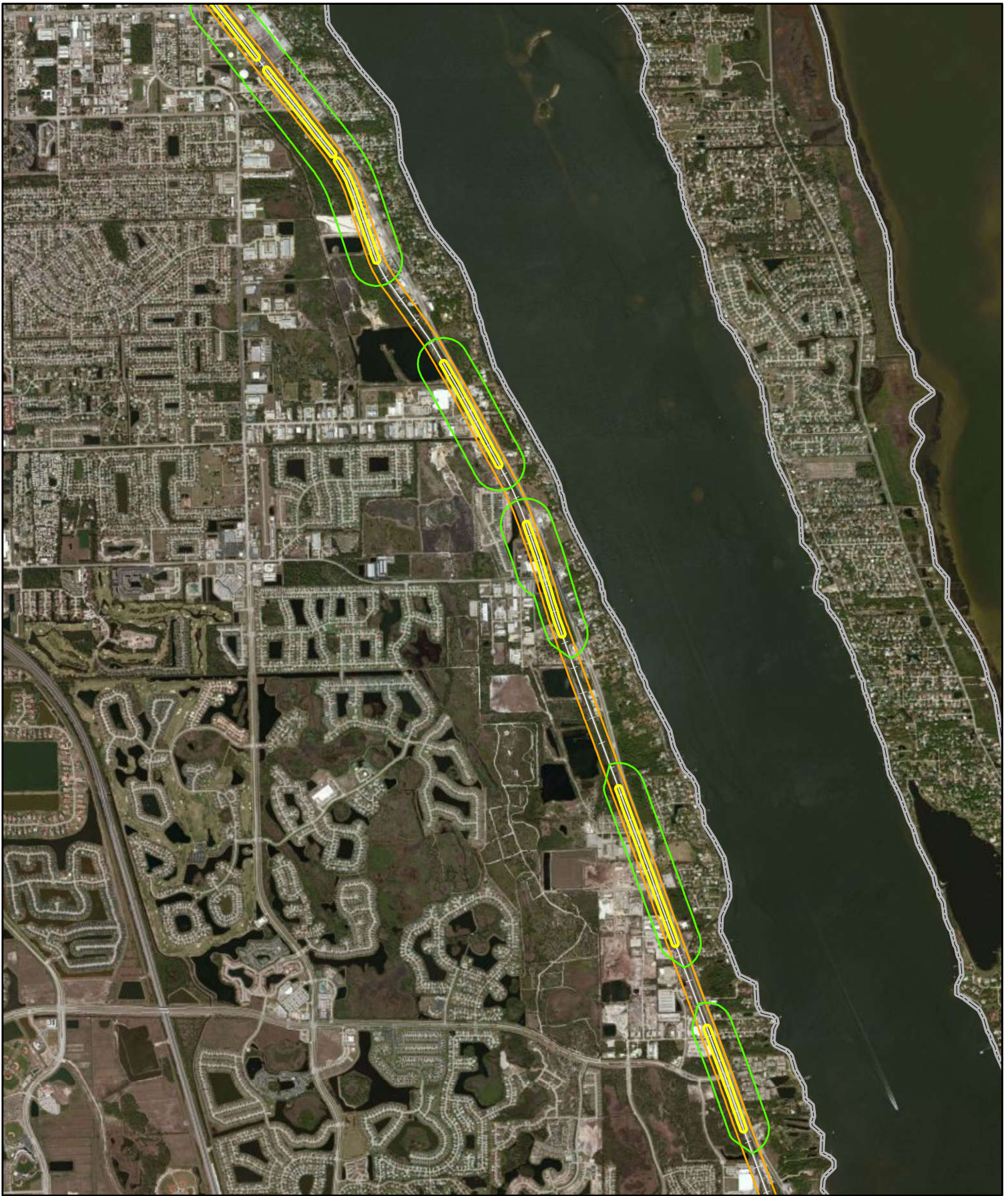
Explanation of Features

- Severe Impact Noise
- Moderate Impact Noise
- Vibration Impact
- County Boundary
- AAF Railway Line

Data Sources: ESRI 2012, FRA 2012, FGDL 2012, AMEC 2013

<p>Brevard County Inventory of Noise and Vibration Impacts</p> <p>All Aboard Florida Intercity Passenger Rail Project</p>		
<p>N</p> <p>0 1,500 3,000 Feet</p>	<p>U.S. Department of Transportation Federal Railroad Administration</p>	<p>Figure 5-22</p>

Path: H:\CSX\Florida_Noise_and_Vibration_Analysis\Task1\MXD\Noise_and_Vibration_Contour_Map_FRA.mxd Project # 6063-12-0212



Explanation of Features

- Severe Impact Noise
- Moderate Impact Noise
- Vibration Impact
- County Boundary
- AAF Railway Line

Data Sources: ESRI 2012, FRA 2012, FGDL 2012, AMEC 2013

<p>Brevard County Inventory of Noise and Vibration Impacts</p> <p>All Aboard Florida Intercity Passenger Rail Project</p>		
<p>N</p> <p>0 1,500 3,000 Feet</p>	<p>U.S. Department of Transportation Federal Railroad Administration</p>	<p>Figure 5-23</p>

Path: H:\CSX\Florida_Noise_and_Vibration_Analysis\Task1\MXD\Noise_and_Vibration_Contour_Map_FRA.mxd Project # 6063-12-0212



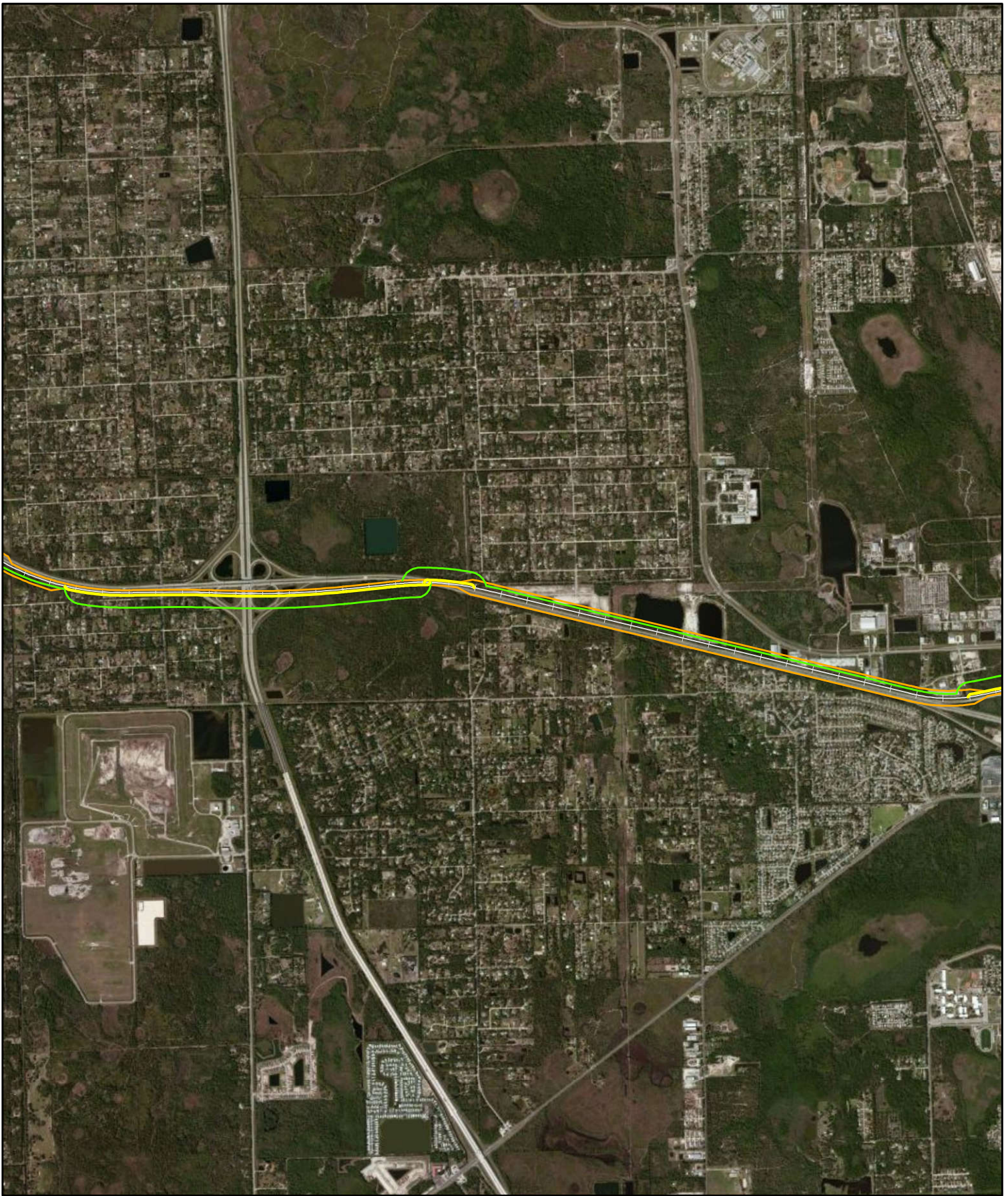
Explanation of Features

- Severe Impact Noise
- Moderate Impact Noise
- Vibration Impact
- County Boundary
- AAF Railway Line

Data Sources: ESRI 2012, FRA 2012, FGDL 2012, AMEC 2013

Brevard County Inventory of Noise and Vibration Impacts		
All Aboard Florida Intercity Passenger Rail Project		
<p>N</p> <p>0 1,500 3,000 Feet</p>	<p>U.S. Department of Transportation Federal Railroad Administration</p>	<p>Figure 5-24</p>

Path: H:\CSX\Florida_Noise_and_Vibration_Analysis\Task1\MXD\Noise_and_Vibration_Contour_Map_FRA.mxd Project # 6063-12-0212



Explanation of Features

- Severe Impact Noise
- Moderate Impact Noise
- Vibration Impact
- County Boundary
- AAF Railway Line

Data Sources: ESRI 2012, FRA 2012, FGDL 2012, AMEC 2013

Brevard County Inventory of Noise and Vibration Impacts		
All Aboard Florida Intercity Passenger Rail Project		
<p>N</p> <p>0 1,500 3,000 Feet</p>	<p>U.S. Department of Transportation Federal Railroad Administration</p>	<p>Figure 5-25</p>

Path: H:\CSX\Floridate_Noise_and_Vibration_Analysis\Task1\MXD\Noise_and_Vibration_Contour_Map_FRA.mxd Project # 6063-12-0212



Explanation of Features

- Severe Impact Noise
- Moderate Impact Noise
- Vibration Impact
- County Boundary
- AAF Railway Line

Data Sources: ESRI 2012, FRA 2012, FGDL 2012, AMEC 2013

Brevard / Orange County Inventory of Noise and Vibration Impacts		
All Aboard Florida Intercity Passenger Rail Project		
<p>N</p> <p>0 1,500 3,000 Feet</p>	<p>U.S. Department of Transportation Federal Railroad Administration</p>	<p>Figure 5-26</p>

Path: H:\CSX\Florida_Noise_and_Vibration_Analysis\Task1\MXD\Noise_and_Vibration_Contour_Map_FRA.mxd Project # 6063-12-0212



Explanation of Features

- Severe Impact Noise
- Moderate Impact Noise
- Vibration Impact
- County Boundary
- AAF Railway Line

Orange County Inventory of Noise and Vibration Impacts		
All Aboard Florida Intercity Passenger Rail Project		
<div style="text-align: center;"> </div> <div style="text-align: center; margin-top: 5px;"> </div>	<p style="font-size: small; margin: 0;">U.S. Department of Transportation Federal Railroad Administration</p>	<p>Figure 5-27</p>



Explanation of Features

- Severe Impact Noise
- Moderate Impact Noise
- Vibration Impact
- County Boundary
- AAF Railway Line

Data Sources: ESRI 2012, FRA 2012, FGDL 2012, AMEC 2013

Orange County Inventory of Noise and Vibration Impacts		
All Aboard Florida Intercity Passenger Rail Project		
 	 U.S. Department of Transportation Federal Railroad Administration	Figure 5-28

Path: H:\CSX\Florida_Noise_and_Vibration_Analysis\Task1\MXD\Noise_and_Vibration_Contour_Map_FRA.mxd Project # 6063-12-0212



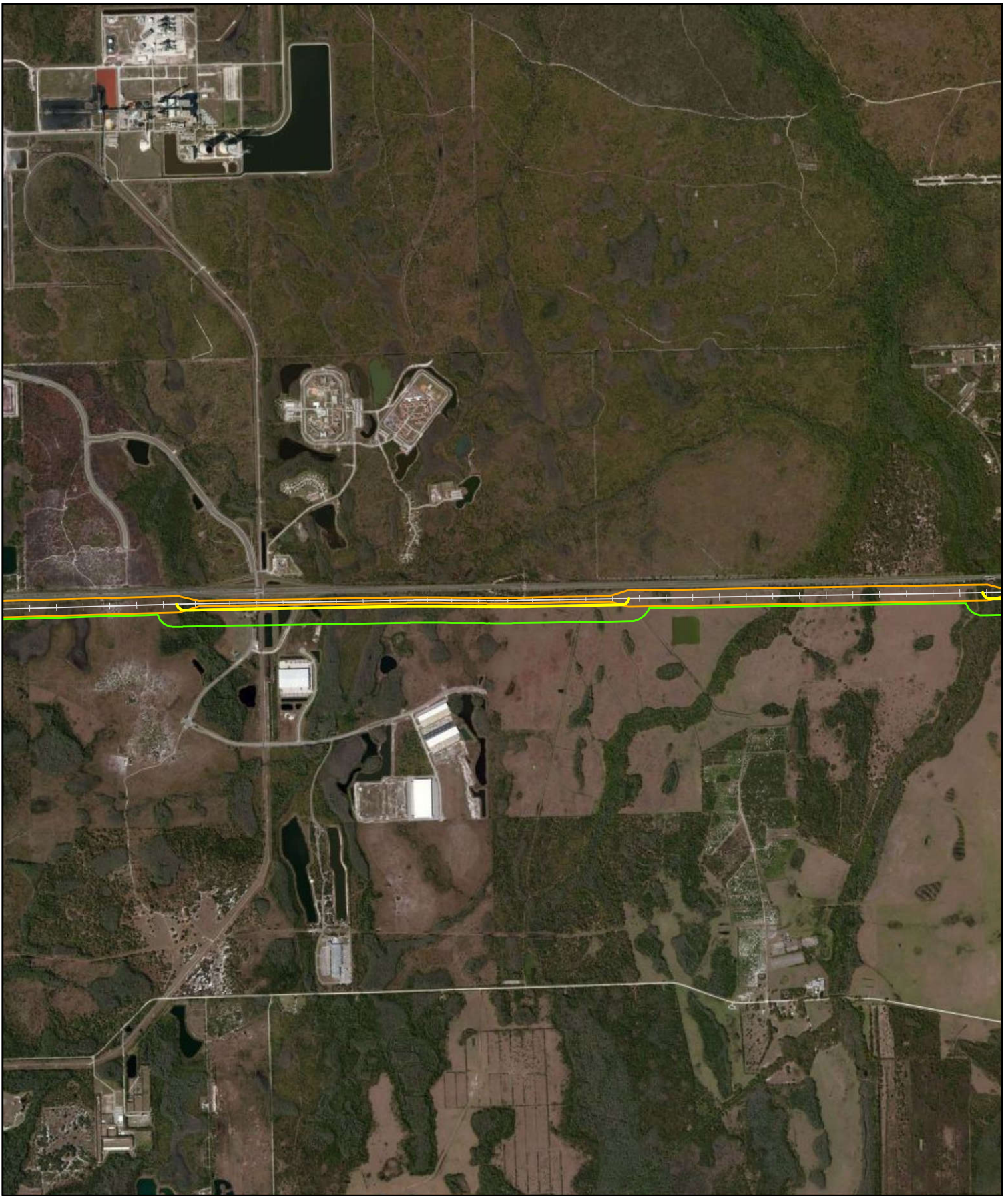
Explanation of Features

- Severe Impact Noise
- Moderate Impact Noise
- Vibration Impact
- County Boundary
- AAF Railway Line

Data Sources: ESRI 2012, FRA 2012, FGDL 2012, AMEC 2013

Orange County Inventory of Noise and Vibration Impacts		
All Aboard Florida Intercity Passenger Rail Project		
<p>N</p> <p>0 1,500 3,000 Feet</p>	<p>U.S. Department of Transportation Federal Railroad Administration</p>	<p>Figure 5-29</p>

Path: H:\CSX\Florida_Noise_and_Vibration_Analysis\Task1\MXD\Noise_and_Vibration_Contour_Map_FRA.mxd Project # 6063-12-0212



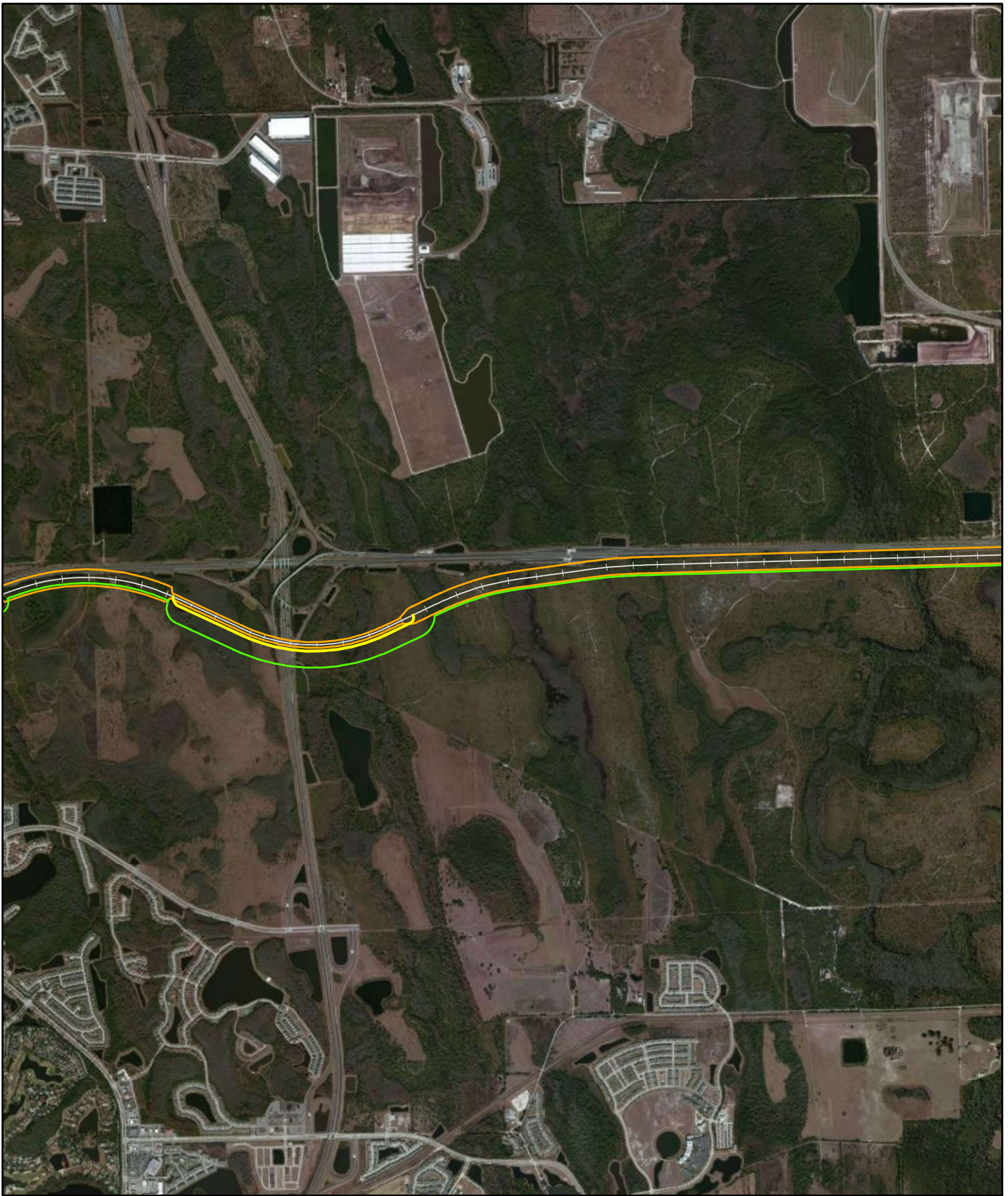
Explanation of Features

- Severe Impact Noise
- Moderate Impact Noise
- Vibration Impact
- County Boundary
- AAF Railway Line

Data Sources: ESRI 2012, FRA 2012, FGDL 2012, AMEC 2013

Orange County Inventory of Noise and Vibration Impacts		
All Aboard Florida Intercity Passenger Rail Project		
<p>N</p> <p>0 1,500 3,000 Feet</p>	<p>U.S. Department of Transportation Federal Railroad Administration</p>	<p>Figure 5-30</p>

Path: H:\CSX\Florida_Noise_and_Vibration_Analysis\Task1\MXD\Noise_and_Vibration_Contour_Map_FRA.mxd Project # 6063-12-0212



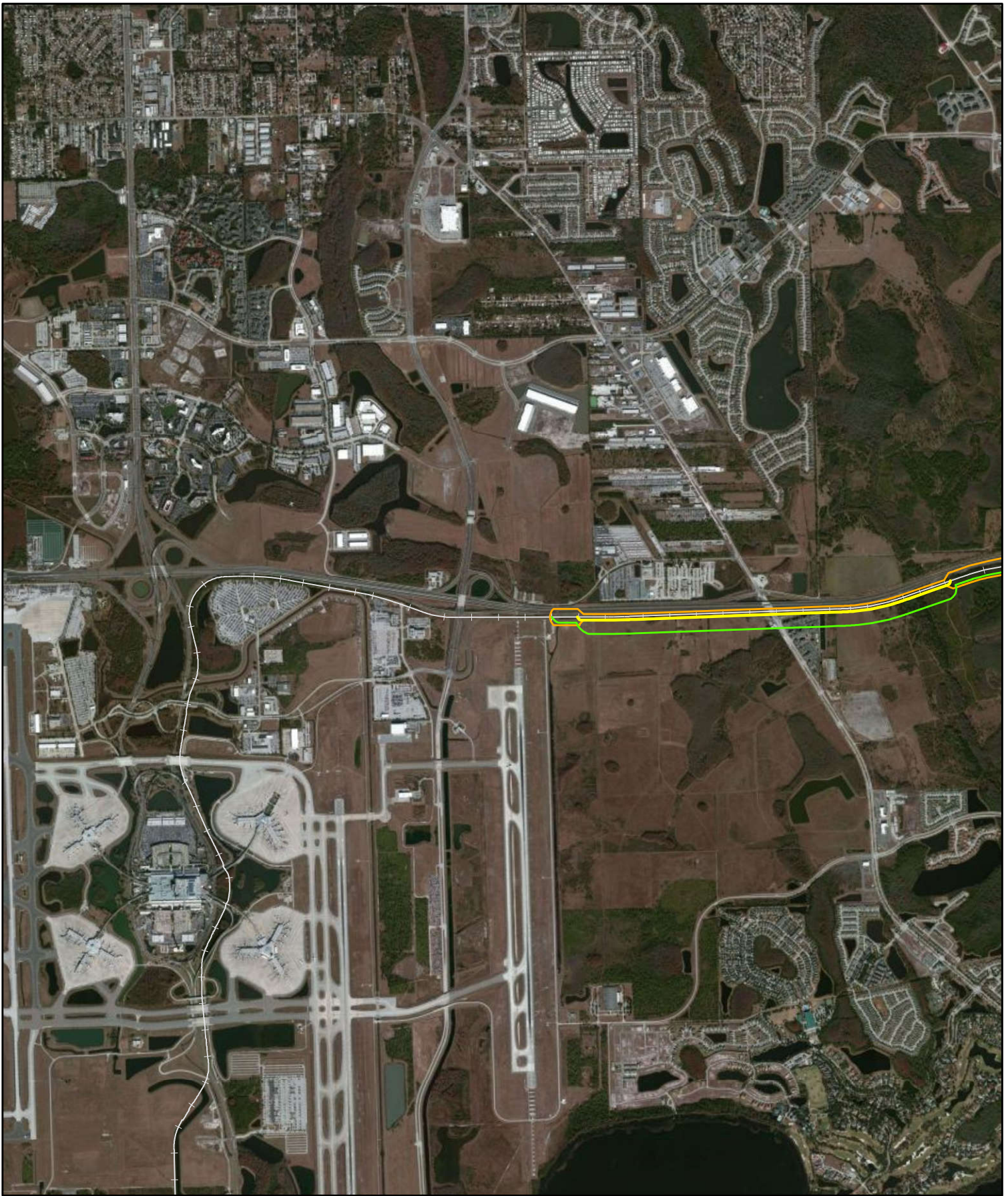
Explanation of Features

- Severe Impact Noise
- Moderate Impact Noise
- Vibration Impact
- County Boundary
- AAF Railway Line

Data Sources: ESRI 2012, FRA 2012, FGDL 2012, AMEC 2013

Orange County Inventory of Noise and Vibration Impacts		
All Aboard Florida Intercity Passenger Rail Project		
<p>N</p> <p>0 1,500 3,000 Feet</p>	<p>U.S. Department of Transportation Federal Railroad Administration</p>	<p>Figure 5-31</p>

Path: H:\CSX\Florida_Noise_and_Vibration_Analysis\Task1\MXD\Noise_and_Vibration_Contour_Map_FRA.mxd Project # 6063-12-0212



Explanation of Features

- Severe Impact Noise
- Moderate Impact Noise
- Vibration Impact
- County Boundary
- AAF Railway Line

***Noise and vibration contour for OIA can be found on map 5-33**

Orange County Inventory of Noise and Vibration Impacts		
All Aboard Florida Intercity Passenger Rail Project		
<div style="text-align: center;"> 0 1,500 3,000 Feet </div>	<p>U.S. Department of Transportation Federal Railroad Administration</p>	Figure 5-32