

Explanation of Features

- | | |
|---------------------|------------------|
| Existing Bridge | Bridge Work Area |
| Existing Alignment | Wetland Line |
| Proposed New Bridge | Wetland |
| Proposed Alignment | |

Data Sources: ESRI Bing Maps 2012 Imagery,
AAF 2012, AMEC 2012

MP 187.37 Horse Creek Bridge Work Area

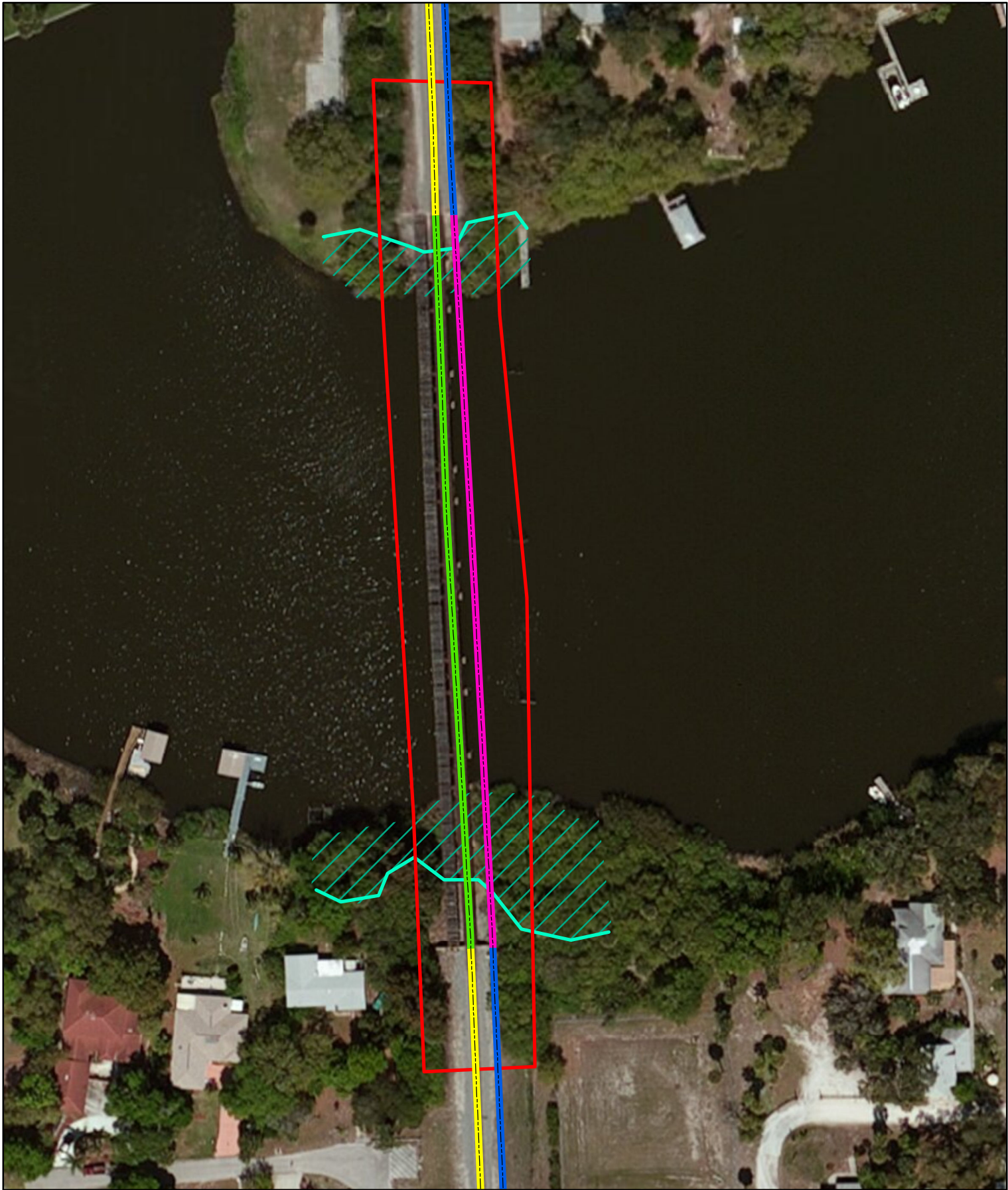
All Aboard Florida Intercity Passenger Rail Project



0 25 50
Ft



U.S. Department
of Transportation
**Federal Railroad
Administration**

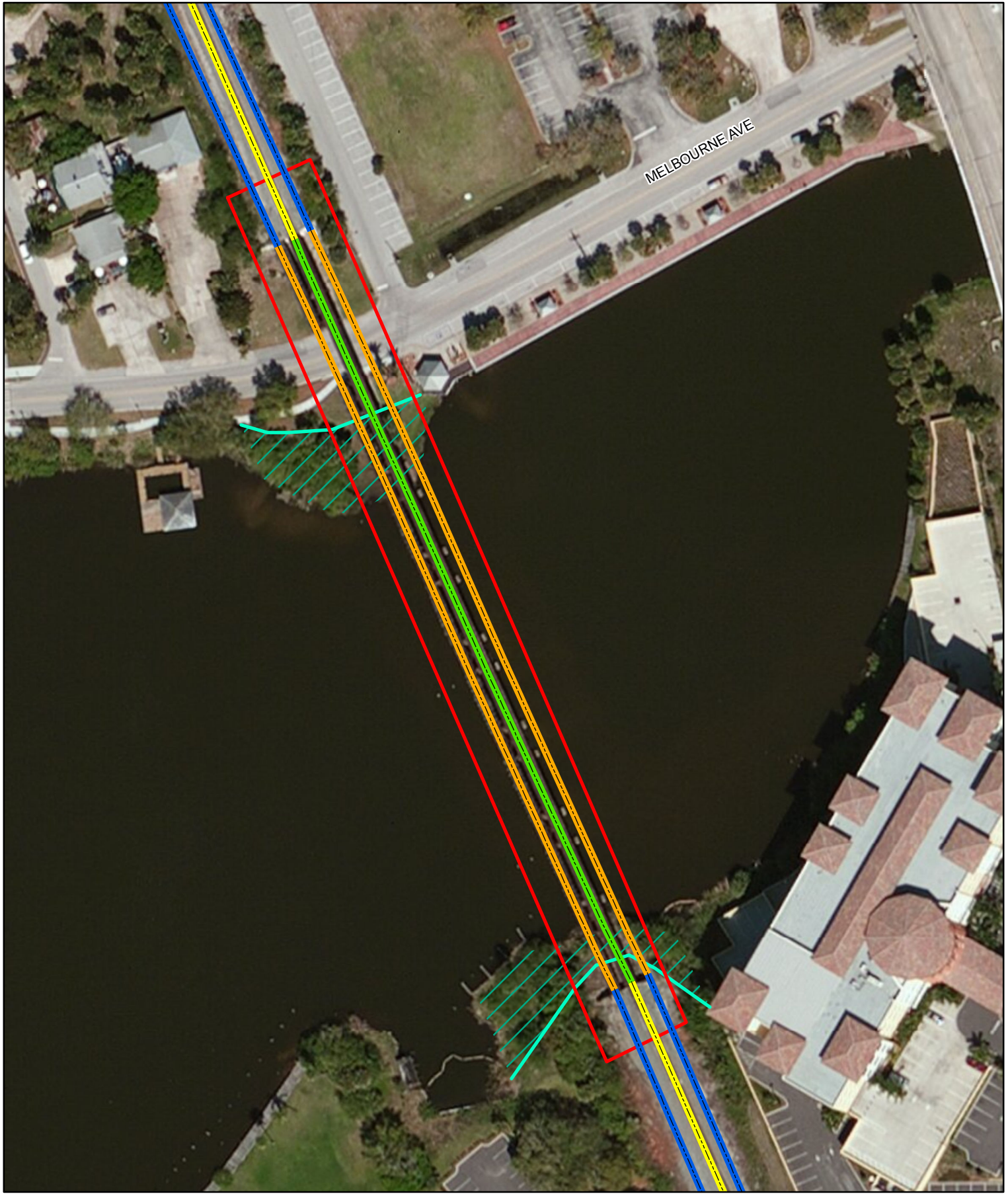


Explanation of Features

- | | | | |
|--|---------------------------------|--|------------------|
| | Existing Bridge to be Abandoned | | Bridge Work Area |
| | Existing Alignment | | Wetland Line |
| | Proposed Double Track Bridge | | Wetland |
| | Proposed Double Track Alignment | | |

Data Sources: ESRI 2012 Imagery,
AAF 2012, AMEC 2012

<p>MP 190.47 Eau Gallie River Bridge Work Area</p>	
<p>All Aboard Florida Intercity Passenger Rail Project</p>	
<p>N</p> <p>0 50 100 Ft</p>	<p>U.S. Department of Transportation Federal Railroad Administration</p>



Explanation of Features

- Existing Bridge to be Abandoned
- Existing Alignment
- Proposed New Bridge
- Proposed Alignment
- Bridge Work Area
- Wetland Line
- / / Wetland

Data Sources: ESRI Bing Maps 2012 Imagery,
AAF 2012, AMEC 2012

MP 194.34 Crane Creek Bridge Work Area

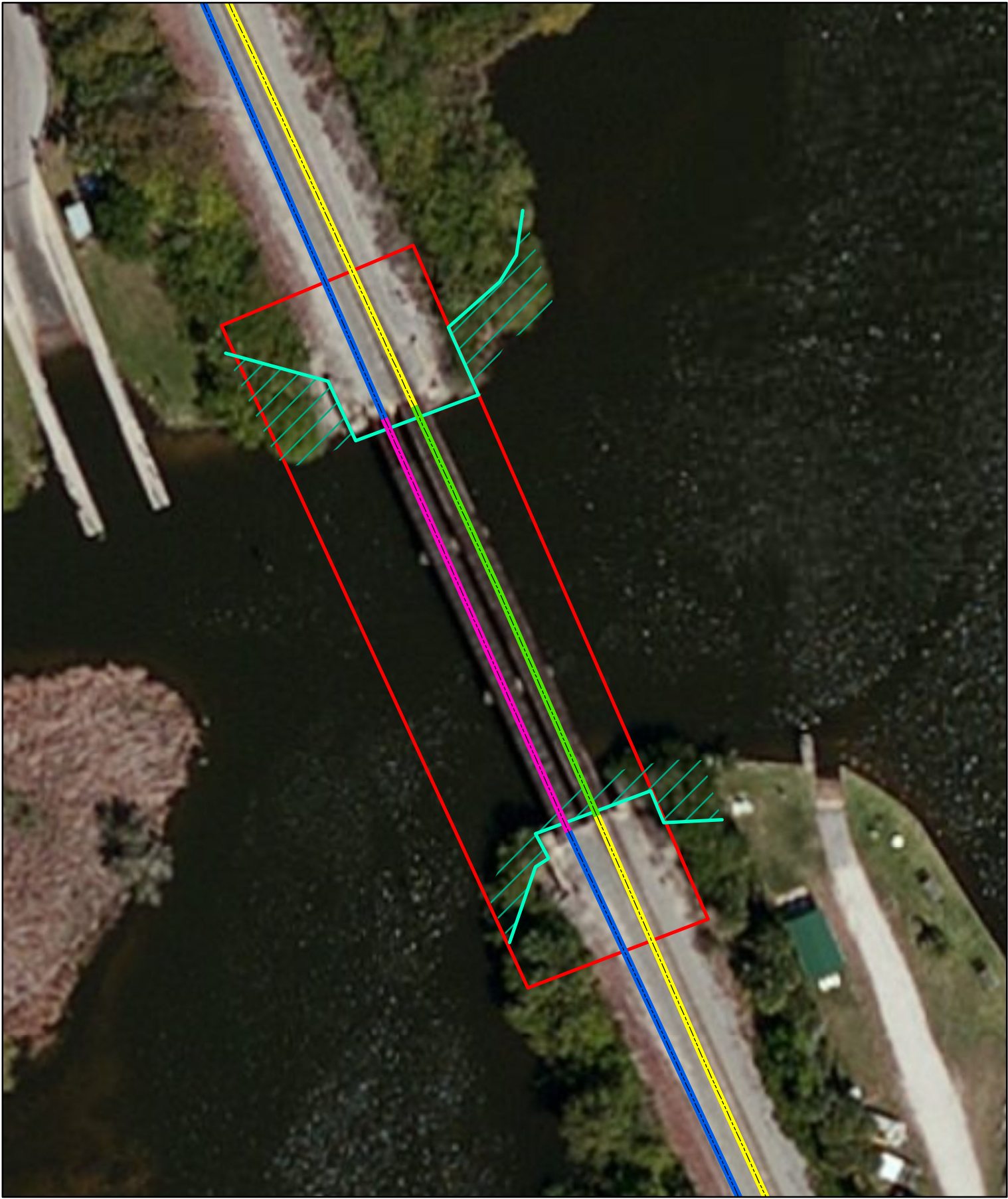
All Aboard Florida Intercity Passenger Rail Project



0 50 100
Ft



U.S. Department
of Transportation
**Federal Railroad
Administration**



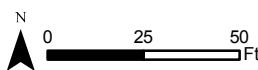
Explanation of Features

- | | |
|---------------------------------|------------------|
| Existing Bridge to be Abandoned | Bridge Work Area |
| Existing Alignment | Wetland Line |
| Proposed Double Track Bridge | Wetland |
| Proposed Double Track Alignment | |

Data Sources: ESRI Bing Maps 2012 Imagery,
AAF 2012, AMEC 2012

MP 197.70 Turkey Creek Bridge Work Area

All Aboard Florida Intercity Passenger Rail Project



U.S. Department
of Transportation
**Federal Railroad
Administration**



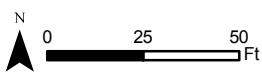
Explanation of Features

- | | |
|--------------------------------|------------------|
| Existing Bridge to be Replaced | Bridge Work Area |
| Existing Alignment | Wetland Line |
| Proposed New Bridge | Wetland |
| Proposed Alignment | |

Data Sources: ESRI Bing Maps 2012 Imagery,
AAF 2012, AMEC 2012

MP 202.59 Goat Creek Bridge Work Area

All Aboard Florida Intercity Passenger Rail Project





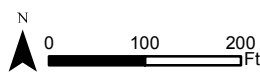
Explanation of Features

- Existing Bridge to be Abandoned
- Existing Alignment
- Proposed Double Track Bridge
- Proposed Double Alignment
- Bridge Work Area
- Wetland Line
- / Wetland

Data Sources: ESRI Bing Maps 2012 Imagery,
AAF 2012, AMEC 2012

MP 212.07 Sebastian River Bridge Work Area

All Aboard Florida Intercity Passenger Rail Project



U.S. Department
of Transportation
**Federal Railroad
Administration**



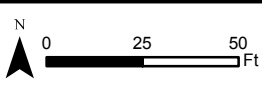
Explanation of Features

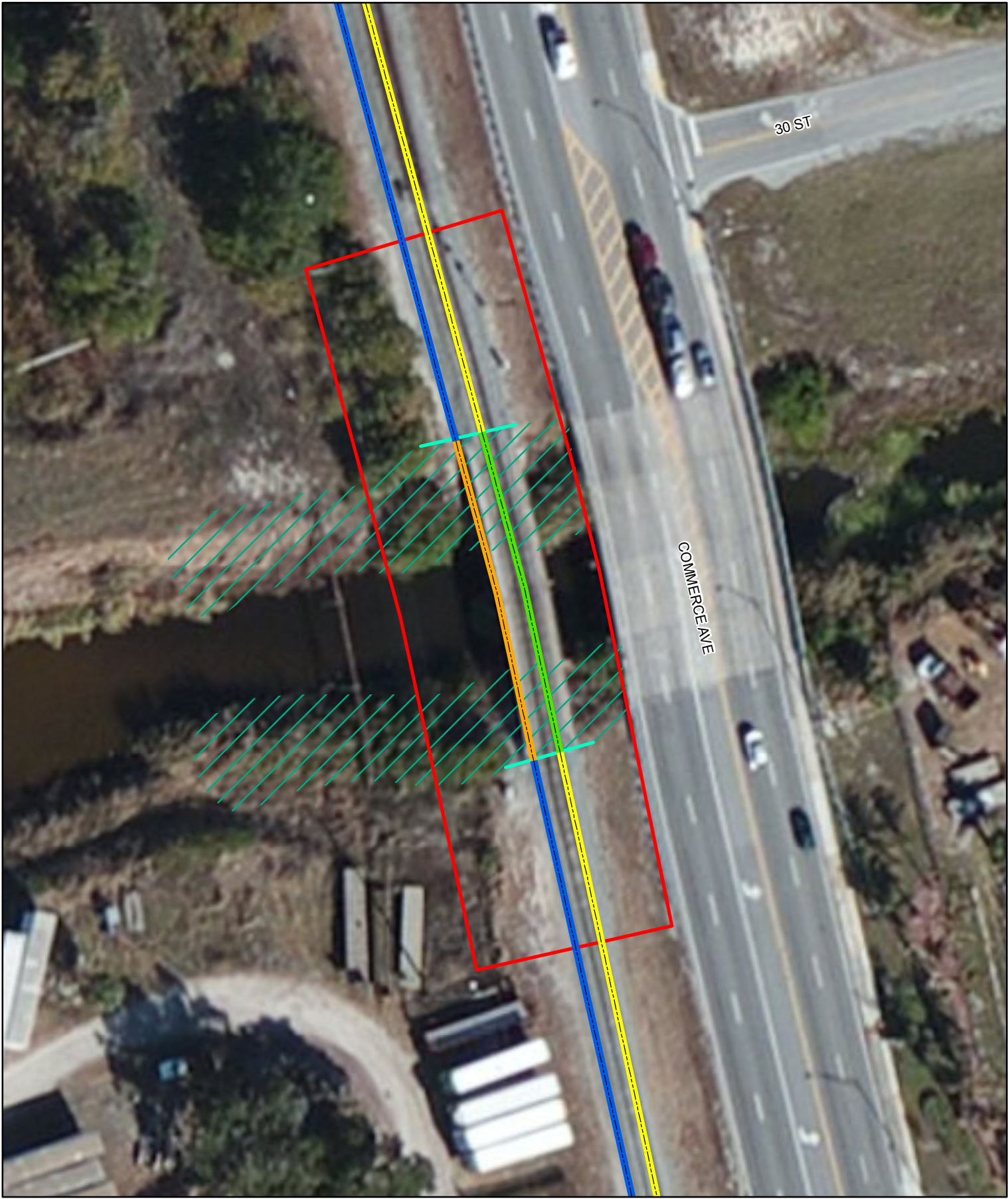
- | | |
|--|--|
|  Existing Bridge |  Bridge Work Area |
|  Existing Alignment |  Wetland Line |
|  Proposed New Bridge |  Wetland |
|  Proposed Alignment | |

Data Sources: ESRI Bing Maps 2012 Imagery,
AAF 2012, AMEC 2012

MP 223.70 North Canal Bridge Work Area

All Aboard Florida Intercity Passenger Rail Project





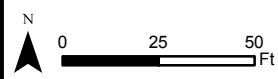
Explanation of Features

- | | |
|---------------------|------------------|
| Existing Bridge | Bridge Work Area |
| Existing Alignment | Wetland Line |
| Proposed New Bridge | Wetland |
| Proposed Alignment | |

Data Sources: ESRI Bing Maps 2012 Imagery,
AAF 2012, AMEC 2012

MP 226.78 Main Canal Bridge Work Area

All Aboard Florida Intercity Passenger Rail Project



U.S. Department
of Transportation
**Federal Railroad
Administration**



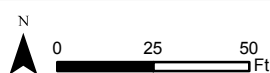
Explanation of Features

- | | |
|---------------------|------------------|
| Existing Bridge | Bridge Work Area |
| Existing Alignment | Wetland Line |
| Proposed New Bridge | Wetland |
| Proposed Alignment | |

Data Sources: ESRI Bing Maps 2012 Imagery,
AAF 2012, AMEC 2012

MP 230.03 South Canal Bridge Work Area

All Aboard Florida Intercity Passenger Rail Project



U.S. Department
of Transportation
**Federal Railroad
Administration**



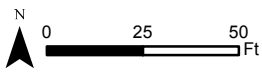
Explanation of Features

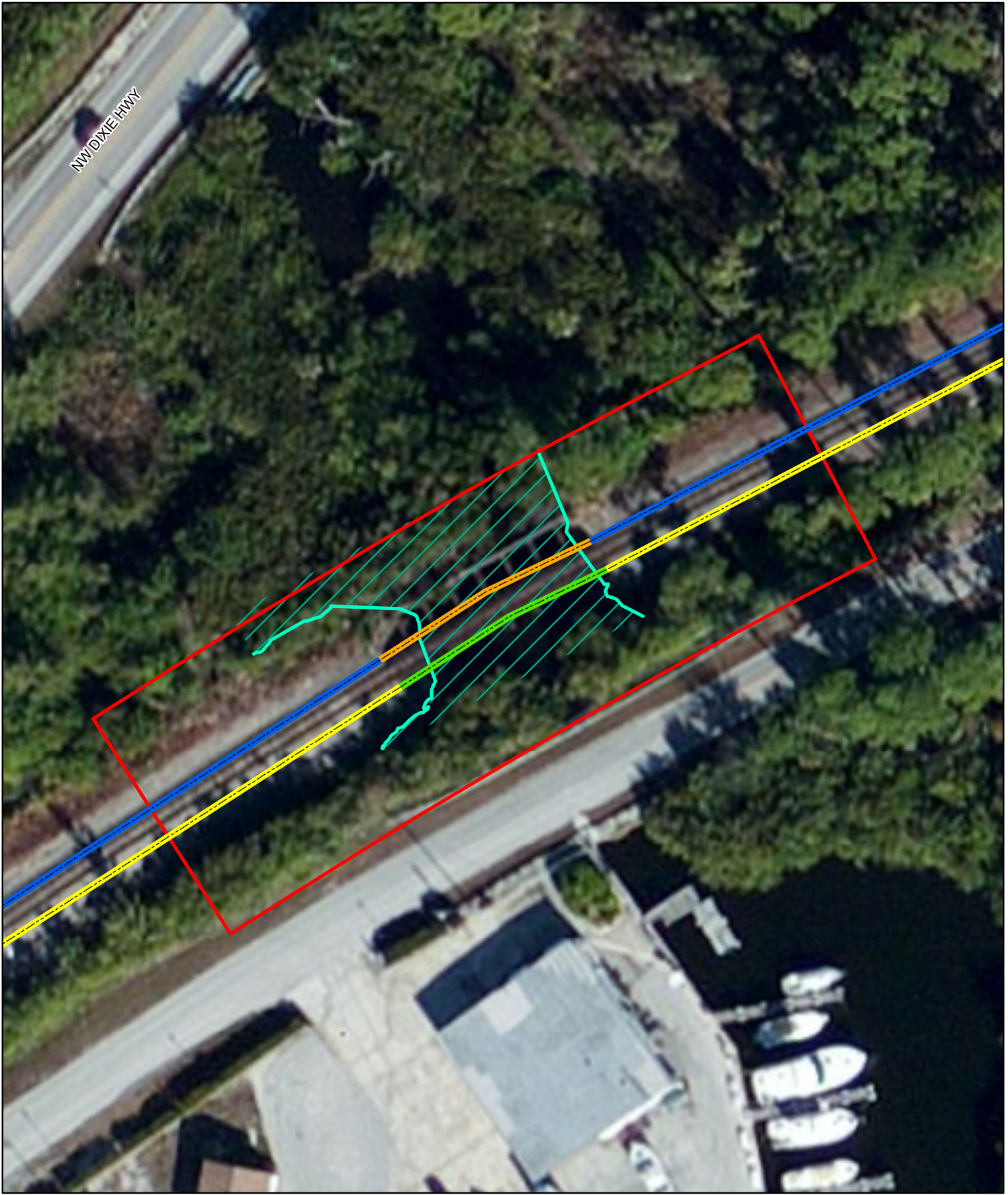
- | | |
|--|--|
|  Existing Bridge |  Bridge Work Area |
|  Existing Alignment |  Wetland Line |
|  Proposed New Bridge |  Wetland |
|  Proposed Alignment | |

Data Sources: ESRI Bing Maps 2012 Imagery,
AAF 2012, AMEC 2012

MP 241.27 Moores Creek Bridge Work Area

All Aboard Florida Intercity Passenger Rail Project





Explanation of Features

- Existing Bridge to be Replaced
- Existing Alignment
- Proposed New Bridge
- Proposed Alignment
- Bridge Work Area
- Wetland Line
- Wetland

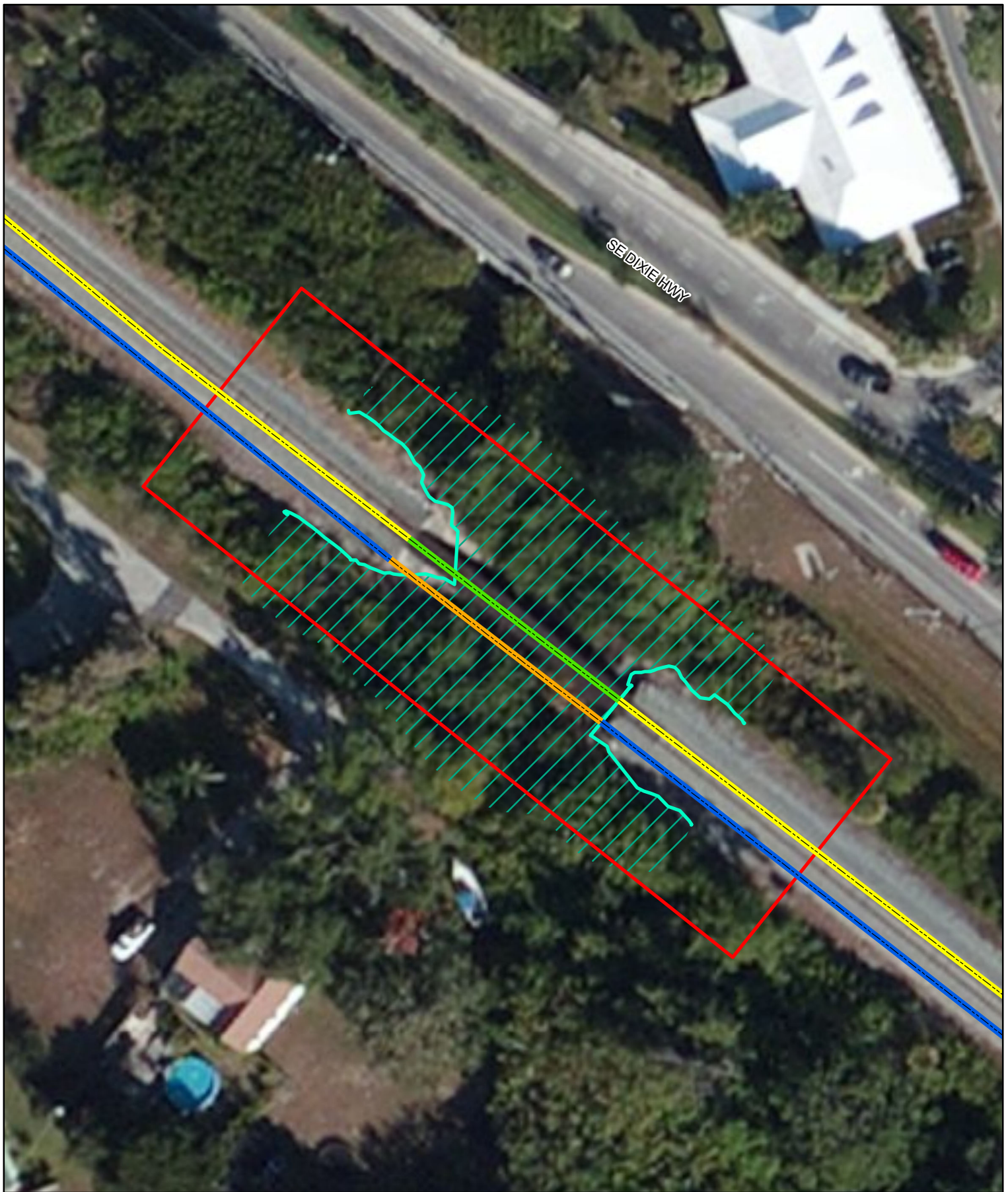
Data Sources: ESRI Bing Maps 2012 Imagery,
AAF 2012, AMEC 2012

MP 259.95 Unnamed Creek Bridge Work Area

All Aboard Florida Intercity Passenger Rail Project



U.S. Department
of Transportation
**Federal Railroad
Administration**



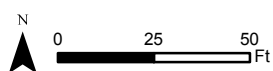
Explanation of Features

- | | |
|---|---|
| --- Existing Bridge | Bridge Work Area |
| --- Existing Alignment | --- Wetland Line |
| --- Proposed New Bridge | / / Wetland |
| --- Proposed Alignment | |

Data Sources: ESRI Bing Maps 2012 Imagery,
AAF 2012, AMEC 2012

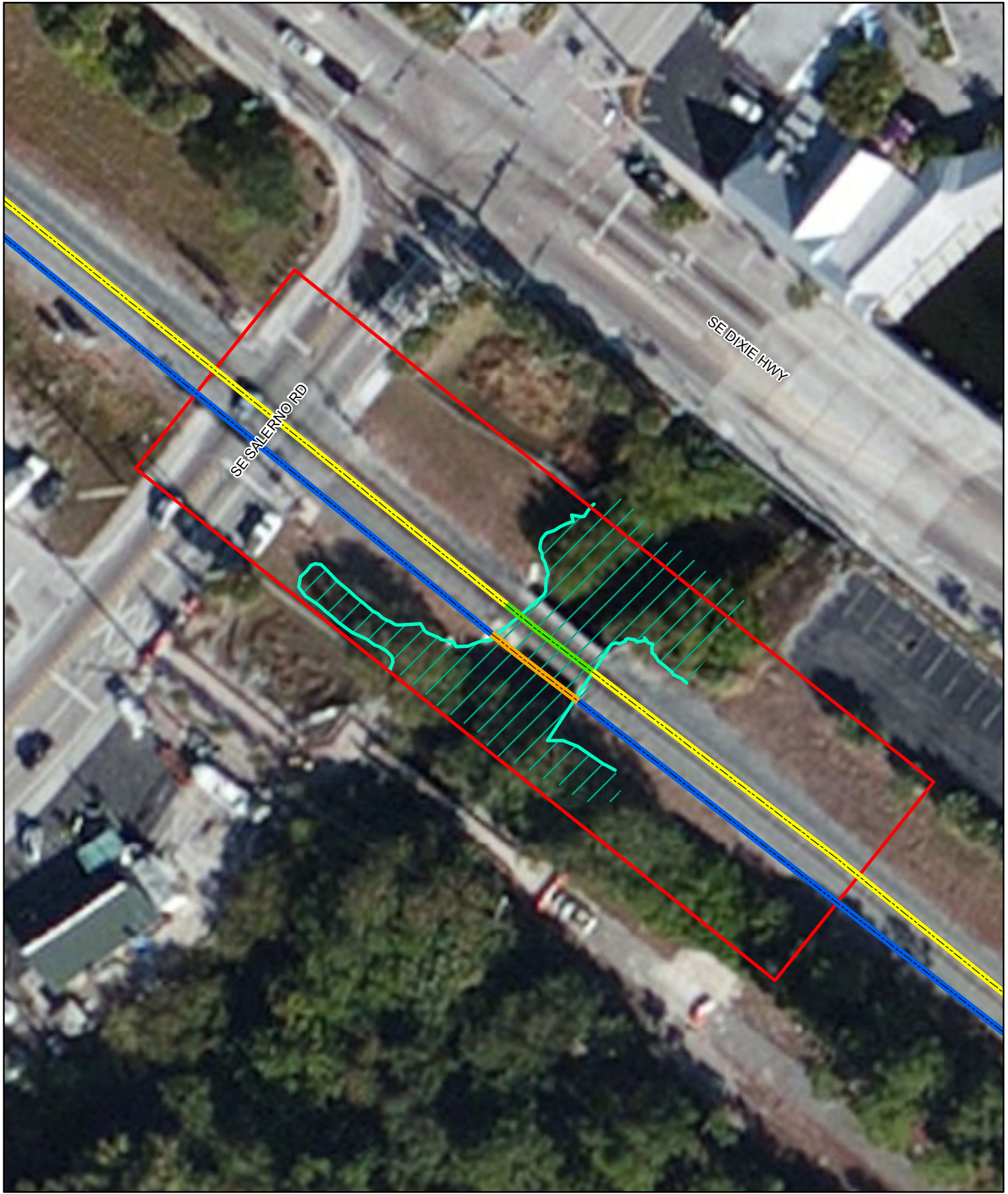
MP 266.58 Unnamed Tributary 1 Bridge Work Area

All Aboard Florida Intercity Passenger Rail Project



U.S. Department
of Transportation
**Federal Railroad
Administration**

Path: F:\FEC\FECI_GOB\MXD\EIS\Detailed Bridge Maps\Unnamed Tributary 1 Detailed Map.mxd



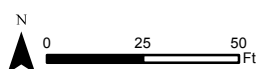
Explanation of Features

- Existing Bridge to be Replaced
- Existing Alignment
- Proposed New Bridge
- Proposed Alignment
- Bridge Work Area
- Wetland Line
- / / / Wetland

Data Sources: ESRI Bing Maps 2012 Imagery,
AAF 2012, AMEC 2012

MP 266.86 Unnamed Tributary 2 Bridge Work Area

All Aboard Florida Intercity Passenger Rail Project



U.S. Department
of Transportation
**Federal Railroad
Administration**

Path: F:\FEC\FEC\G08\MXD\GIS\Detailed Bridge Maps\Unnamed Tributary 2 Detailed Map.mxd



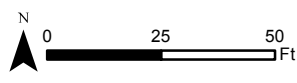
Explanation of Features

- | | |
|---|--|
| --- Existing Bridge to be Replaced | Bridge Work Area |
| --- Existing Alignment | --- Wetland Line |
| --- Proposed New Bridge | / Wetland |
| --- Proposed Alignment | |

Data Sources: ESRI Bing Maps 2012 Imagery,
AAF 2012, AMEC 2012

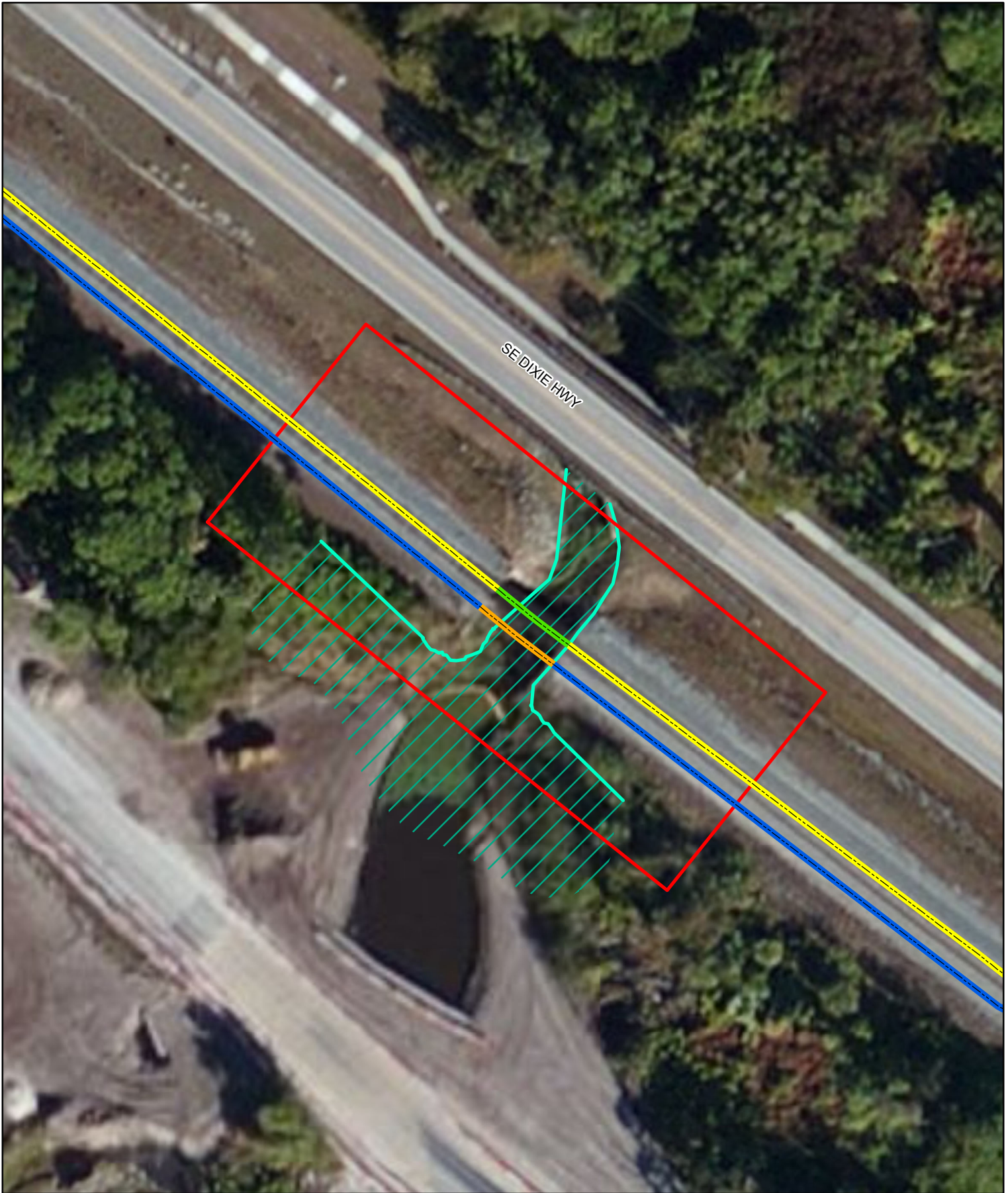
MP 267.34 Trib to Manatee Creek 1 Bridge Work Area

All Aboard Florida Intercity Passenger Rail Project



U.S. Department
of Transportation
**Federal Railroad
Administration**

Path: F:\FECHPECT_GDB\MXD\GIS\Detailed Bridge Maps\Tributary to Manatee Creek 1 Detailed Map.mxd



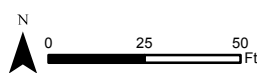
Explanation of Features

- Existing Bridge to be Replaced
- Existing Alignment
- Proposed New Bridge
- Proposed Alignment
- Bridge Work Area
- Wetland Line
- / Wetland

Data Sources: ESRI Bing Maps 2012 Imagery,
AAF 2012, AMEC 2012

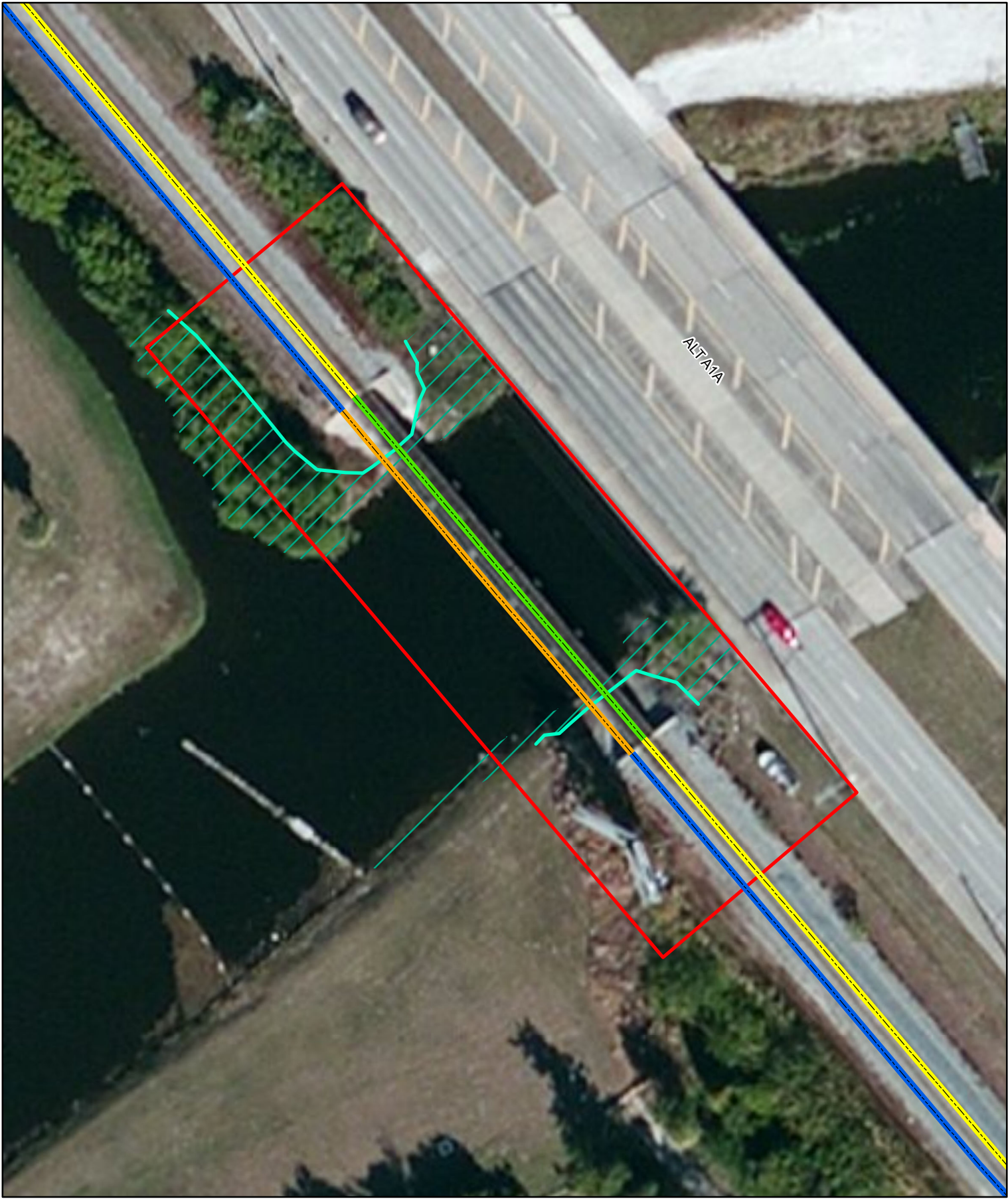
MP 267.70 Trib to Manatee Creek 2 Bridge Work Area

All Aboard Florida Intercity Passenger Rail Project



U.S. Department
of Transportation
**Federal Railroad
Administration**

Path: F:\FEC\FEC\GDB\MXD\GIS\Detailed Bridge Maps\Tributary to Manatee Creek 2 Detailed Map.mxd



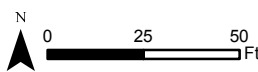
Explanation of Features

- | | |
|---------------------|------------------|
| Existing Bridge | Bridge Work Area |
| Existing Alignment | Wetland Line |
| Proposed New Bridge | Wetland |
| Proposed Alignment | |

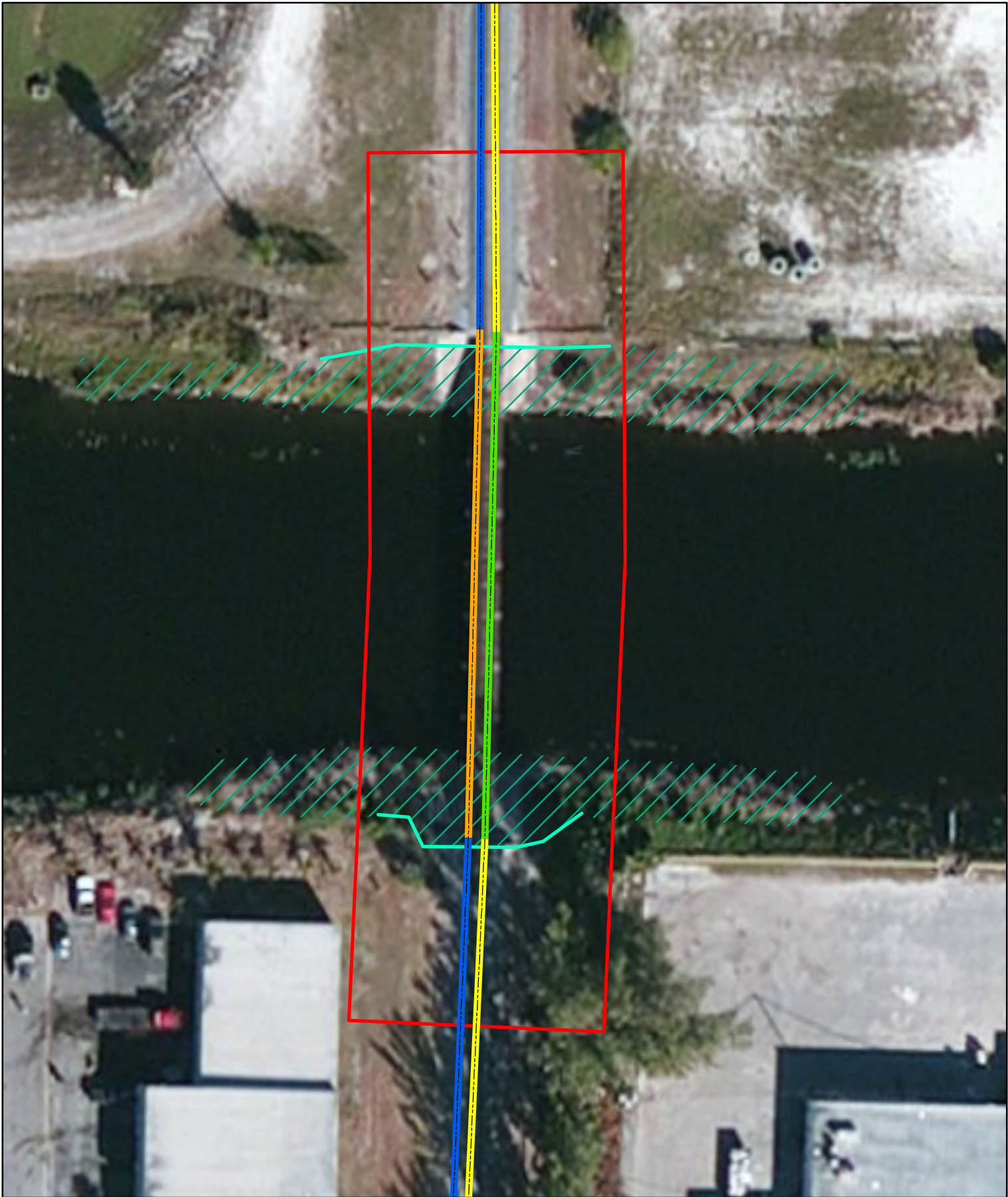
Data Sources: ESRI Bing Maps 2012 Imagery,
AAF 2012, AMEC 2012

MP 291.86 Earman River Bridge Work Area

All Aboard Florida Intercity Passenger Rail Project



U.S. Department
of Transportation
**Federal Railroad
Administration**



Explanation of Features

- | | | | |
|--|---------------------|--|------------------|
| | Existing Bridge | | Bridge Work Area |
| | Existing Alignment | | Wetland Line |
| | Proposed New Bridge | | Wetland |
| | Proposed Alignment | | |

Data Sources: ESRI Bing Maps 2012 Imagery,
AAF 2012, AMEC 2012

MP 304.05 Canal C-51 Bridge Work Area

All Aboard Florida Intercity Passenger Rail Project



U.S. Department
of Transportation
**Federal Railroad
Administration**

Path: F:\FECH\FECL_GDB\MXD\EIS\Detailed Bridge Maps\Canal C-51 Detailed Map.mxd



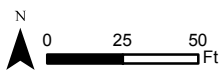
Explanation of Features

- Existing Bridge
- Existing Alignment
- Proposed New Bridge
- Proposed Alignment
- Bridge Work Area
- Wetland Line
- Wetland

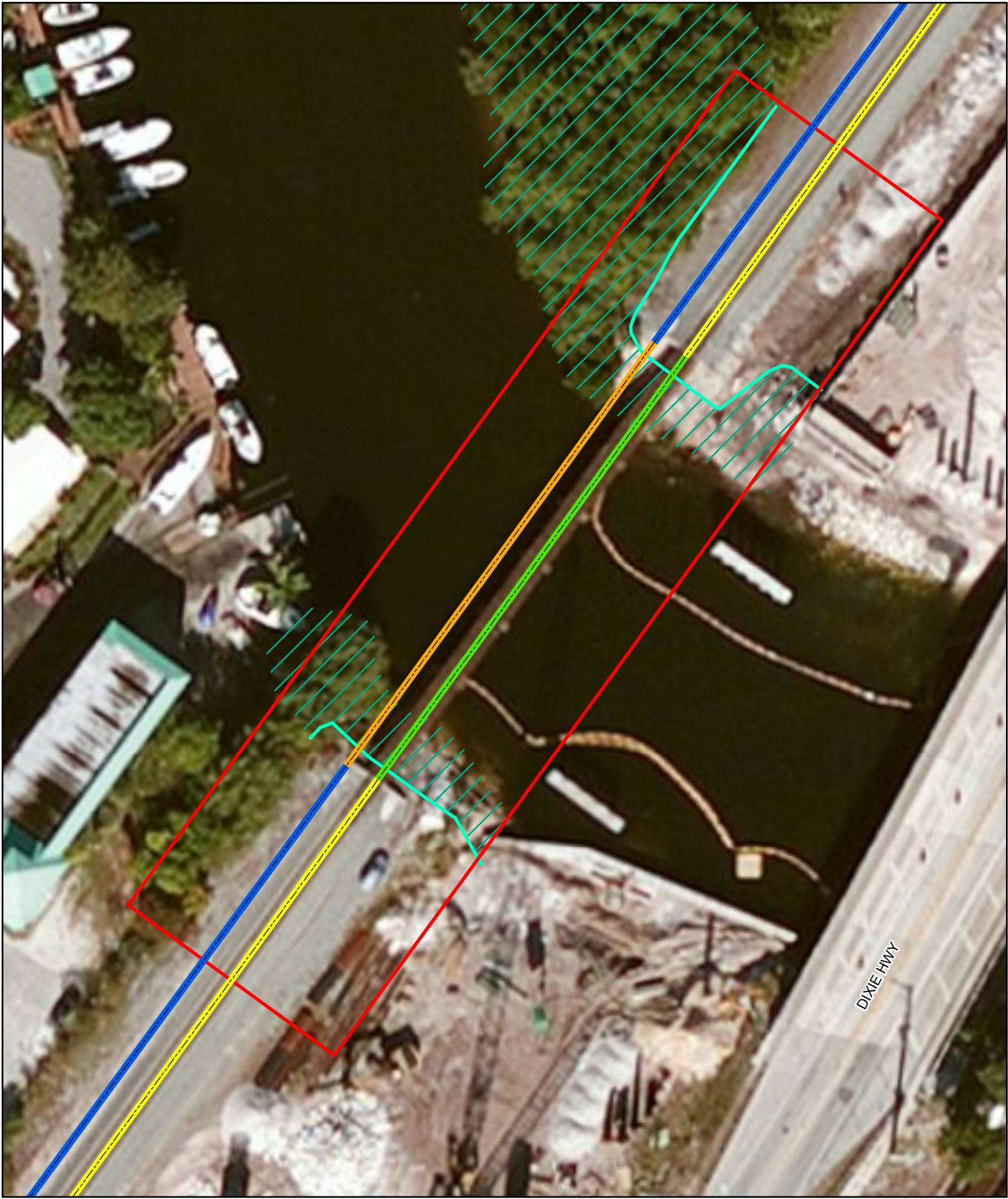
Data Sources: ESRI Bing Maps 2012 Imagery, AAF 2012, AMEC 2012

MP 311.45 Boyton Beach Canal Bridge Work Area

All Aboard Florida Intercity Passenger Rail Project



U.S. Department
of Transportation
**Federal Railroad
Administration**



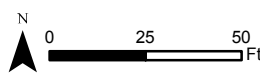
Explanation of Features

- | | |
|---------------------|------------------|
| Existing Bridge | Bridge Work Area |
| Existing Alignment | Wetland Line |
| Proposed New Bridge | Wetland |
| Proposed Alignment | |

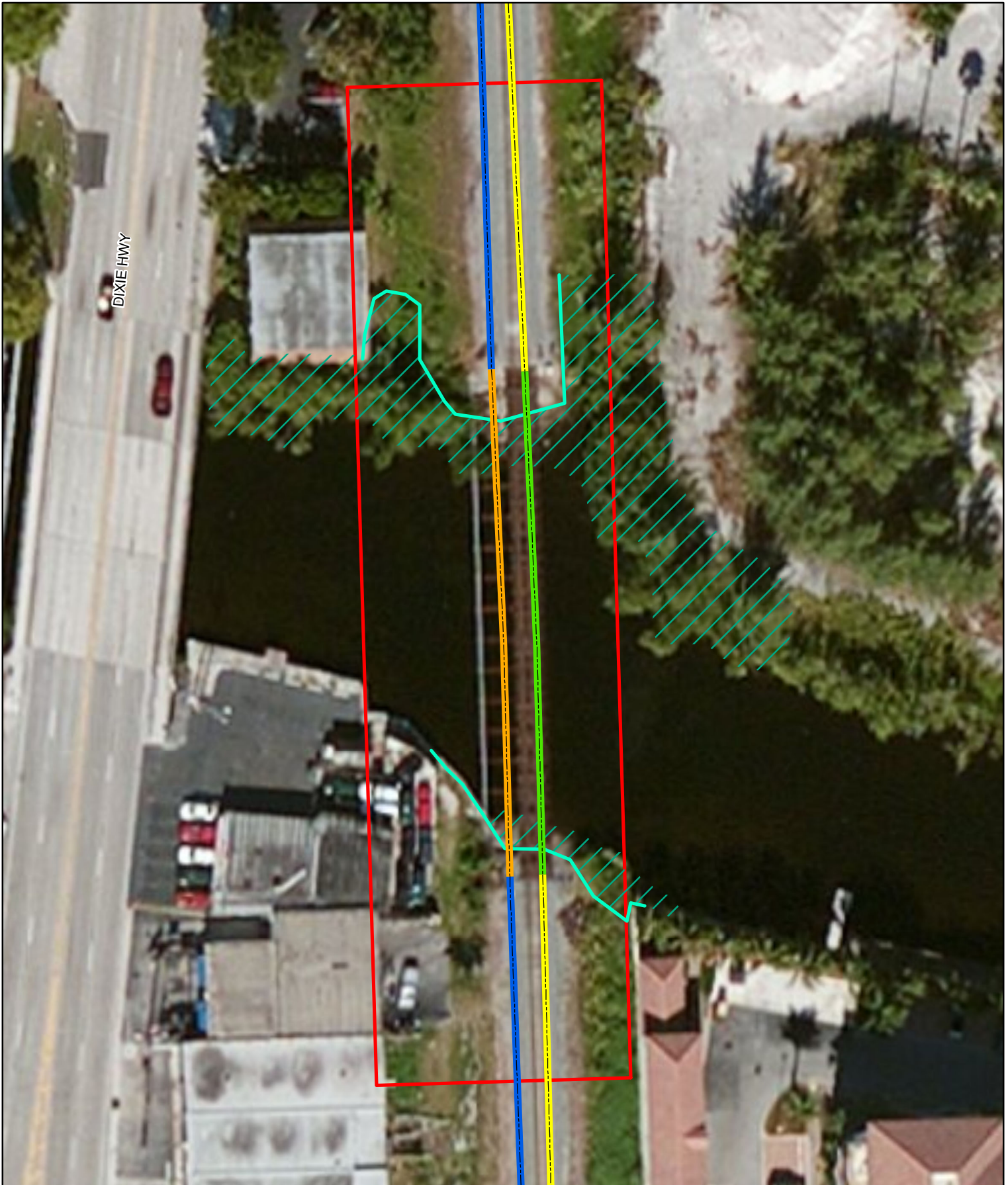
Data Sources: ESRI Bing Maps 2012 Imagery,
AAF 2012, AMEC 2012

MP 326.58 Hillsboro Canal Bridge Work Area

All Aboard Florida Intercity Passenger Rail Project



U.S. Department
of Transportation
**Federal Railroad
Administration**



Explanation of Features

- Existing Bridge to be Replaced
- Existing Alignment
- Proposed New Bridge
- Proposed Alignment
- Bridge Work Area
- Wetland Line
- / Wetland

Data Sources: ESRI Bing Maps 2012 Imagery,
AAF 2012, AMEC 2012

MP 337.91 N. Fork of Middle River Bridge Work Area

All Aboard Florida Intercity Passenger Rail Project



U.S. Department
of Transportation
**Federal Railroad
Administration**



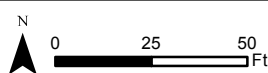
Explanation of Features

- Existing Bridge to be Replaced
- Existing Alignment
- Proposed New Bridge
- Proposed Alignment
- Bridge Work Area
- Wetland Line
- Wetland

Data Sources: ESRI Bing Maps 2012 Imagery,
AAF 2012, AMEC 2012

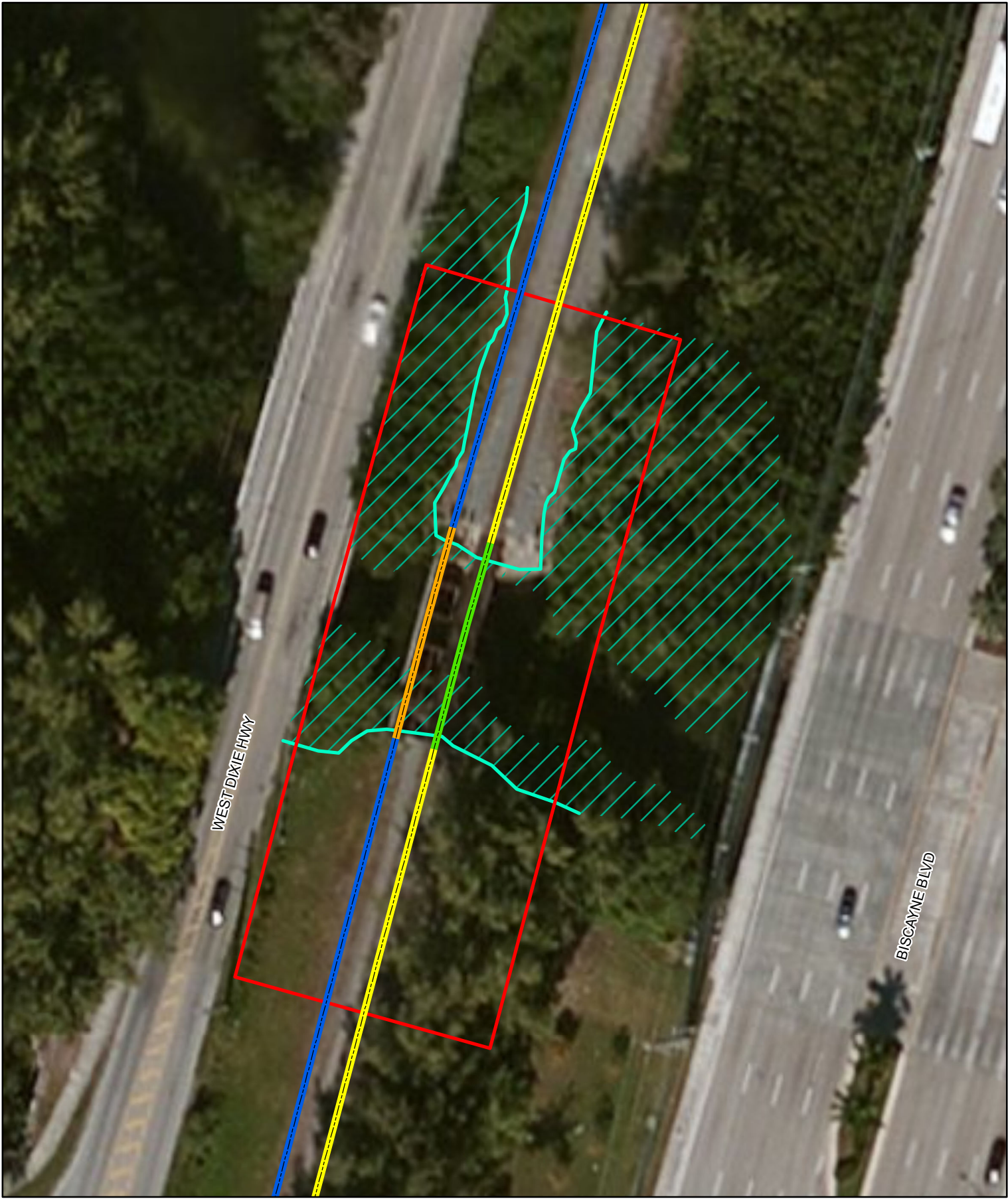
MP 338.52 S. Fork of Middle River Bridge Work Area

All Aboard Florida Intercity Passenger Rail Project



U.S. Department
of Transportation
**Federal Railroad
Administration**

Path: F:\FEC\IFEC\GDB\IMXD\EIS\Detailed Bridge Maps\South Fork Detailed Map.mxd



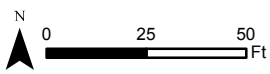
Explanation of Features

- | | |
|--------------------------------|------------------|
| Existing Bridge to be Replaced | Bridge Work Area |
| Existing Alignment | Wetland Line |
| Proposed New Bridge | Wetland |
| Proposed Alignment | |

Data Sources: ESRI Bing Maps 2012 Imagery,
AAF 2012, AMEC 2012

MP 353.74 Oleta River Bridge Work Area

All Aboard Florida Intercity Passenger Rail Project



U.S. Department
of Transportation
**Federal Railroad
Administration**



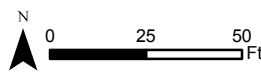
Explanation of Features

- Existing Bridge □ Bridge Work Area
- - - Existing Alignment — Wetland Line
- Proposed New Bridge ▨ Wetland
- - - Proposed Alignment

Data Sources: ESRI Bing Maps 2012 Imagery,
AAF 2012, AMEC 2012

MP 356.53 Arch Creek Bridge Work Area

All Aboard Florida Intercity Passenger Rail Project



U.S. Department
of Transportation
**Federal Railroad
Administration**

Path: F:\FECHPECT_GDBMXD\GIS\Detailed Bridge Maps\Arch Creek Detailed Map.mxd