

APPENDIX D: MAP BOOK



- Sheet
- Route 2: Pages 1-8, 29-36, 50-end
- Route 4: Pages 1-8, 37-44, 50-end
- Route 5 - Option 1: Pages 1-11, 45-end
- Route 5 - Option 2: Pages 1-9, 12, 13, 45-end
- Route 9 - Option 1: Pages 14-25, 45-end
- Route 9 - Option 2: Pages 14-22, 26-28, 45-end

- Illinois: Pages 1-6, 14-21
- Indiana: Pages 6-13, 21-56
- Michigan: Pages 55-end



Potential Impact Area

Background Copyright: ©2013 Esri, DeLorme, NAVTEQ



CHICAGO-DETROIT / PONTIAC PASSENGER RAIL CORRIDOR PROGRAM

DATE
December 2013
APPENDIX
Index - Part 4 of 4



- | | |
|-----------------------|---------------------|
| Route Alternative | Historic District |
| Potential Impact Area | NWI Wetland |
| State Boundary | Nature Preserve |
| County Boundary | Natural Area |
| Municipal Boundary | Park |
| Stream | 100-Year Floodplain |
| Impaired Waters | |
| Impaired Waters | |
| Park | |
| Recreation Area | |
| Historic Site | |



Potential Impact Area
- Routes 2, 4, 5 Option 1, 5 Option 2, 9 Option 1 & 9 Option 2



Background Copyright: © 2013 Esri, DeLorme, NAVTEQ, TomTom
Copyright: © 2013 Esri, DeLorme, NAVTEQ
Source: Esri, DigitalGlobe, GeoEye, i-cubed, USDA, USGS, AEX, Getmapping, Aerogrid, IGN, IGP, swisstopo, and the GIS User



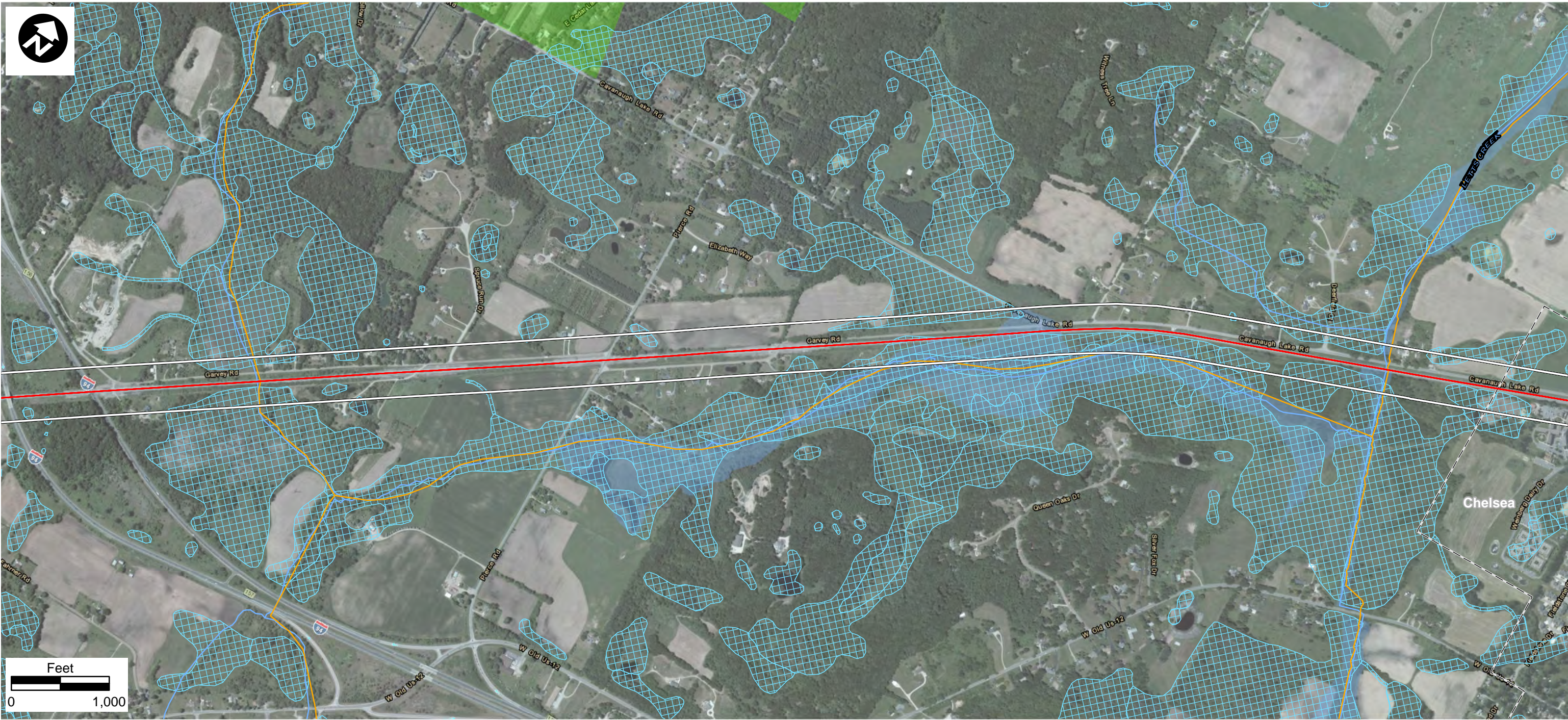
- | | |
|-----------------------|---------------------|
| Route Alternative | Historic District |
| Potential Impact Area | NWI Wetland |
| State Boundary | Nature Preserve |
| County Boundary | Natural Area |
| Municipal Boundary | Park |
| Stream | 100-Year Floodplain |
| Impaired Waters | |
| Impaired Waters | |
| Park | |
| Recreation Area | |
| Historic Site | |



Potential Impact Area
- Routes 2, 4, 5 Option 1, 5 Option 2, 9 Option 1 & 9 Option 2

Background Copyright: © 2013 Esri, DeLorme, NAVTEQ, TomTom
Copyright: © 2013 Esri, DeLorme, NAVTEQ
Source: Esri, DigitalGlobe, GeoEye, i-cubed, USDA, USGS, AEX, Getmapping, Aerogrid, IGN, IGP, swisstopo, and the GIS User





- Route Alternative
- Potential Impact Area
- State Boundary
- County Boundary
- Municipal Boundary
- Stream
- Impaired Waters
- Impaired Waters
- Park
- Recreation Area
- Historic Site
- Historic District
- NWI Wetland
- Nature Preserve
- Natural Area
- Park
- 100-Year Floodplain



Potential Impact Area
- Routes 2, 4, 5 Option 1, 5 Option 2, 9 Option 1 & 9 Option 2



Background Copyright: © 2013 Esri, DeLorme, NAVTEQ, TomTom
Copyright: © 2013 Esri, DeLorme, NAVTEQ
Source: Esri, DigitalGlobe, GeoEye, i-cubed, USDA, USGS, AEX, Getmapping, Aerogrid, IGN, IGP, swisstopo, and the GIS User



- Route Alternative
- Potential Impact Area
- State Boundary
- County Boundary
- Municipal Boundary
- Stream
- Impaired Waters
- Impaired Waters
- Park
- Recreation Area
- Historic Site
- Historic District
- NWI Wetland
- Nature Preserve
- Natural Area
- Park
- 100-Year Floodplain



Potential Impact Area
- Routes 2, 4, 5 Option 1, 5 Option 2, 9 Option 1 & 9 Option 2

Background Copyright: © 2013 Esri, DeLorme, NAVTEQ, TomTom
Copyright: © 2013 Esri, DeLorme, NAVTEQ
Source: Esri, DigitalGlobe, GeoEye, i-cubed, USDA, USGS, AEX, Getmapping, Aerogrid, IGN, IGP, swisstopo, and the GIS User





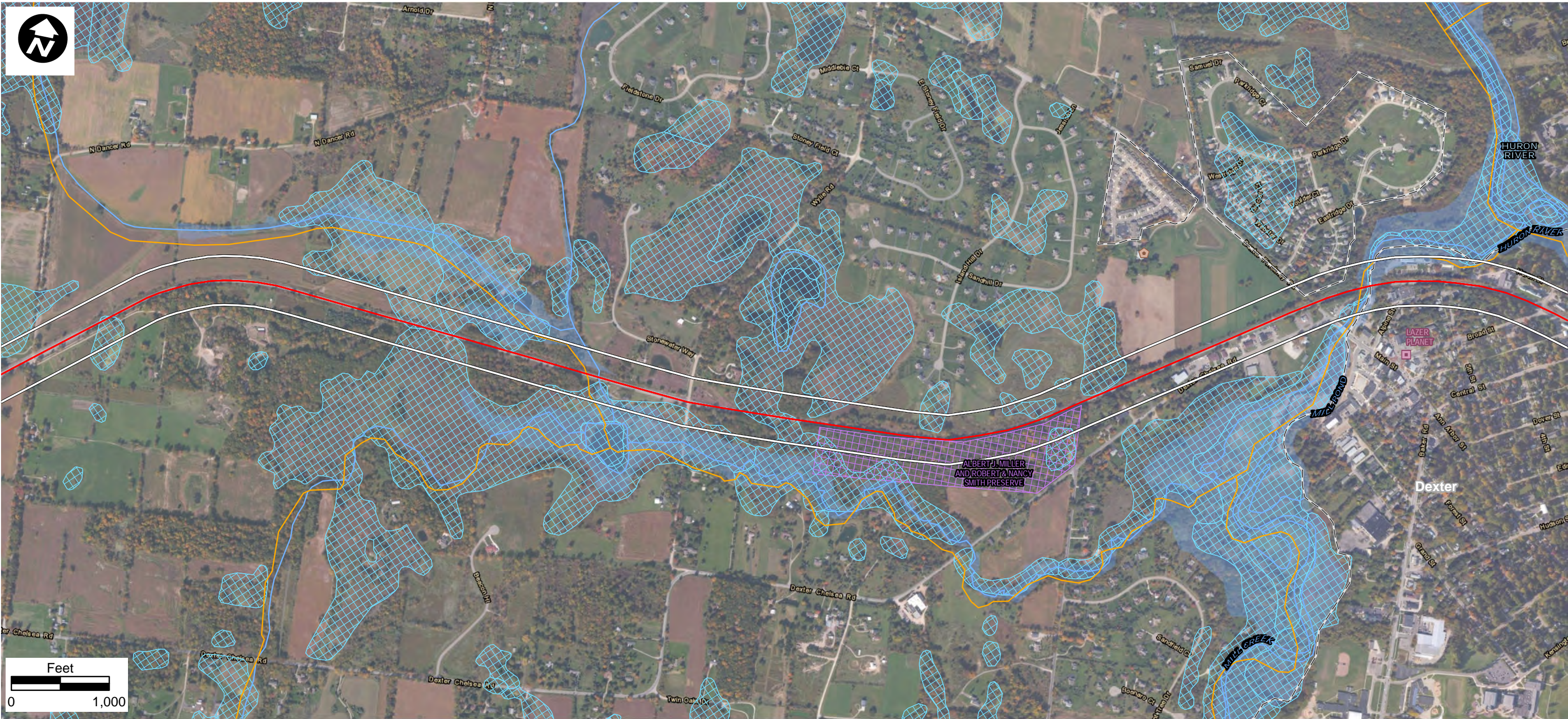
- Routes 2, 4, 5 Option 1, 5 Option 2, 9 Option 1 & 9 Option 2

Page 117 of 143

Background Copyright: © 2013 Esri, DeLorme, NAVTEQ, TomTom
Copyright: © 2013 Esri, DeLorme, NAVTEQ
Source: Esri, DigitalGlobe, GeoEye, i-cubed, USDA, USGS, AEX,
Getmapping, Aerogrid, IGN, IGP, swisstopo, and the GIS User



CHICAGO-DETROIT / PONTIAC PASSENGER RAIL CORRIDOR PROGRAM



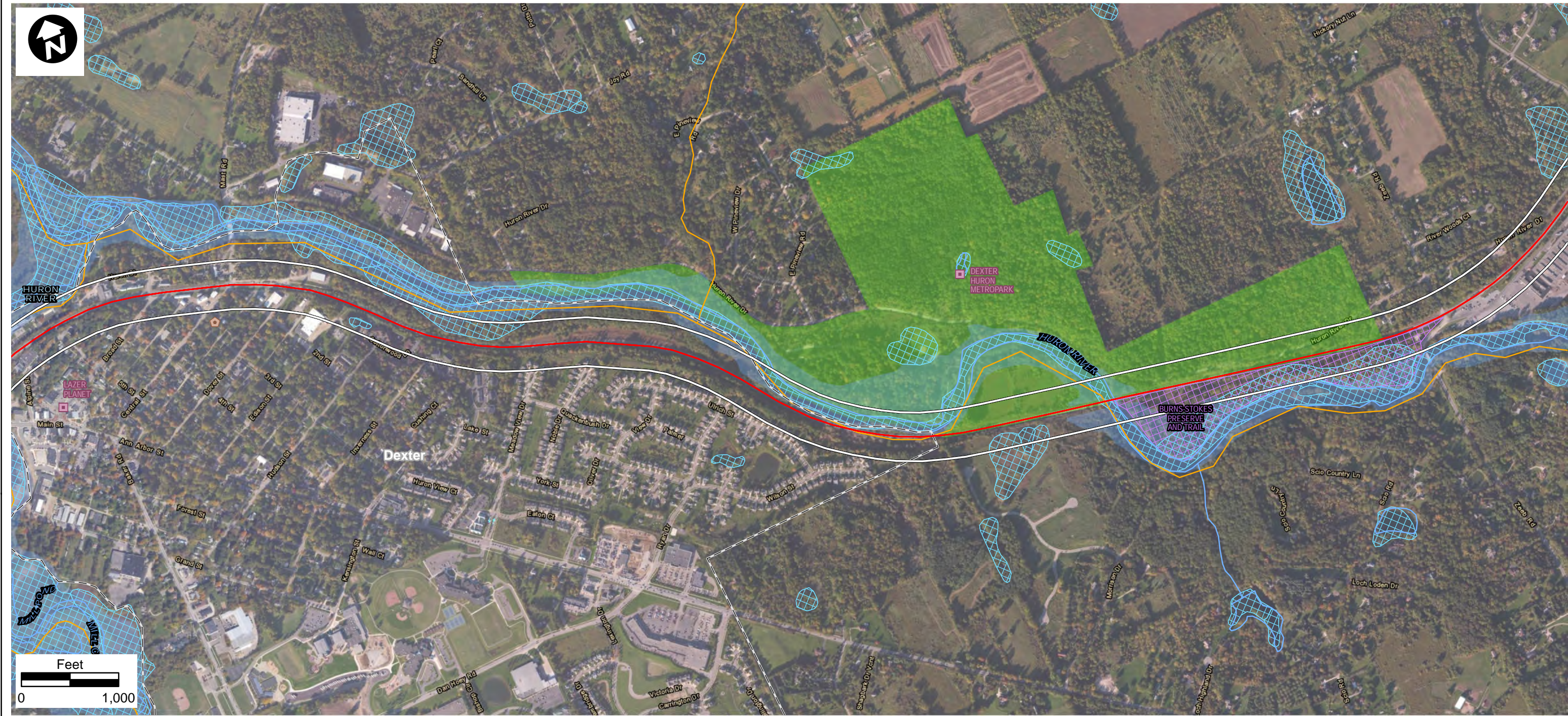
- Route Alternative
- Potential Impact Area
- State Boundary
- County Boundary
- Municipal Boundary
- Stream
- Impaired Waters
- Impaired Waters
- Park
- Recreation Area
- Historic Site
- Historic District
- NWI Wetland
- Nature Preserve
- Natural Area
- Park
- 100-Year Floodplain



Potential Impact Area
- Routes 2, 4, 5 Option 1, 5 Option 2, 9 Option 1 & 9 Option 2

Background Copyright: © 2013 Esri, DeLorme, NAVTEQ, TomTom
Copyright: © 2013 Esri, DeLorme, NAVTEQ
Source: Esri, DigitalGlobe, GeoEye, i-cubed, USDA, USGS, AEX, Getmapping, Aerogrid, IGN, IGP, swisstopo, and the GIS User





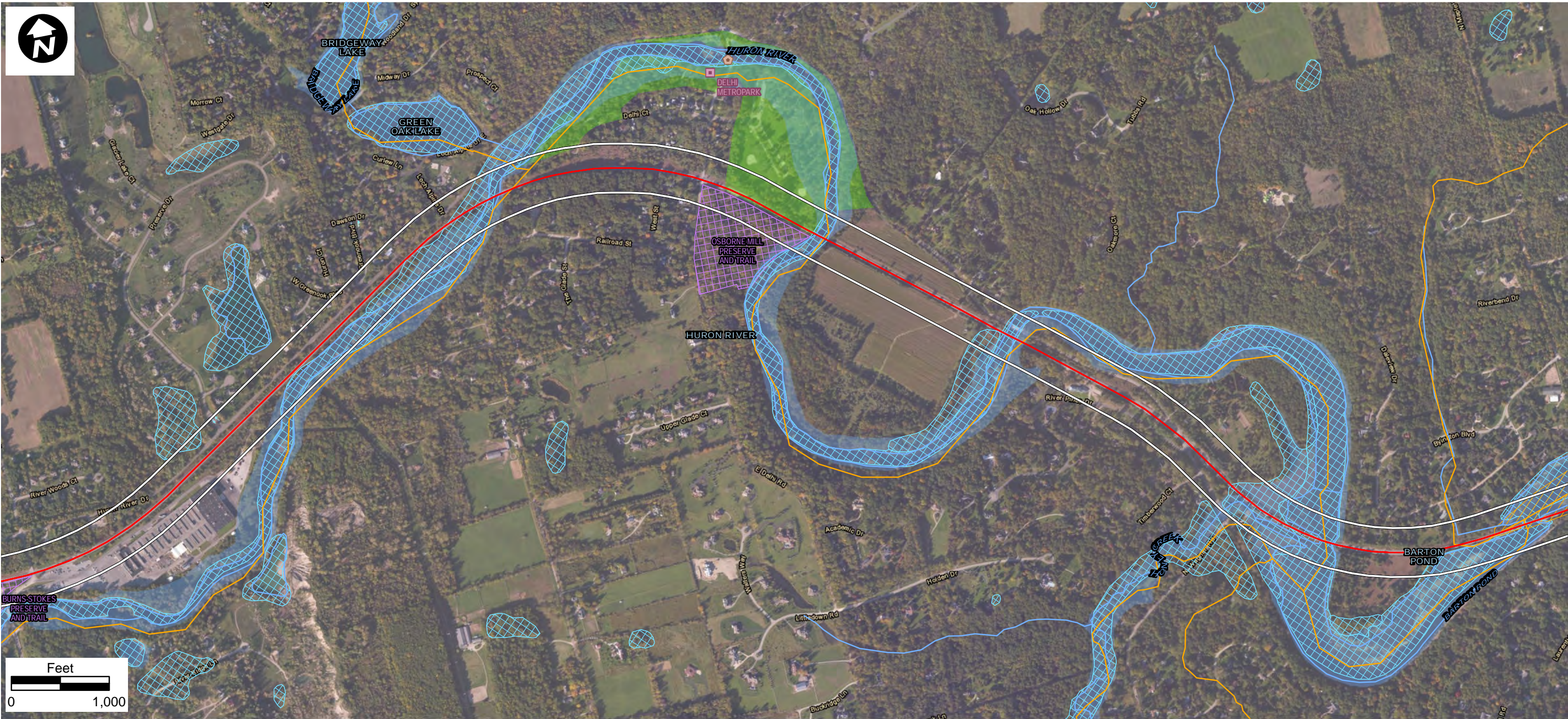
- Route Alternative
- Potential Impact Area
- State Boundary
- County Boundary
- Municipal Boundary
- Stream
- Impaired Waters
- Impaired Waters
- Park
- Recreation Area
- Historic Site
- Historic District
- NWI Wetland
- Nature Preserve
- Natural Area
- Park
- 100-Year Floodplain



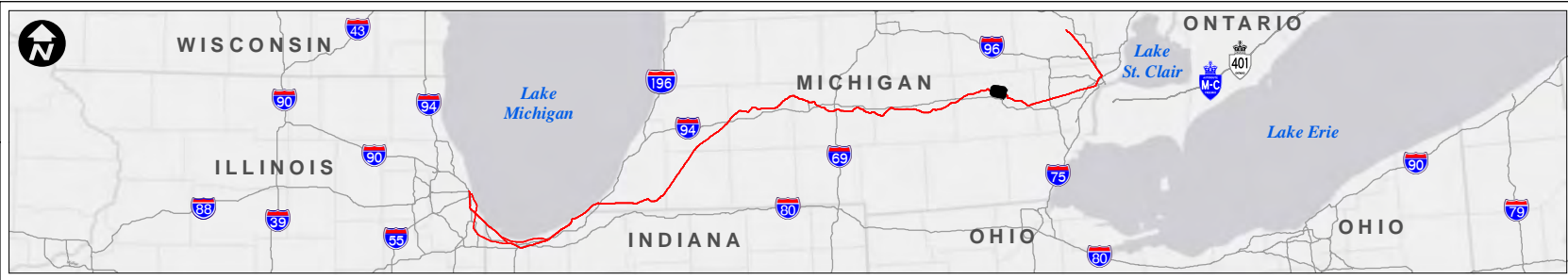
Potential Impact Area
- Routes 2, 4, 5 Option 1, 5 Option 2, 9 Option 1 & 9 Option 2



Background Copyright: © 2013 Esri, DeLorme, NAVTEQ, TomTom
Copyright: © 2013 Esri, DeLorme, NAVTEQ
Source: Esri, DigitalGlobe, GeoEye, i-cubed, USDA, USGS, AEX, Getmapping, Aerogrid, IGN, IGP, swisstopo, and the GIS User



- | | |
|-----------------------|---------------------|
| Route Alternative | Historic District |
| Potential Impact Area | NWI Wetland |
| State Boundary | Nature Preserve |
| County Boundary | Natural Area |
| Municipal Boundary | Park |
| Stream | 100-Year Floodplain |
| Impaired Waters | |
| Impaired Waters | |
| Park | |
| Recreation Area | |
| Historic Site | |



Potential Impact Area
- Routes 2, 4, 5 Option 1, 5 Option 2, 9 Option 1 & 9 Option 2



Background Copyright: © 2013 Esri, DeLorme, NAVTEQ, TomTom
Copyright: © 2013 Esri, DeLorme, NAVTEQ
Source: Esri, DigitalGlobe, GeoEye, i-cubed, USDA, USGS, AEX, Getmapping, Aerogrid, IGN, IGP, swisstopo, and the GIS User



- Route Alternative
- Potential Impact Area
- State Boundary
- County Boundary
- Municipal Boundary
- Stream
- Impaired Waters
- Impaired Waters
- Park
- Recreation Area
- Historic Site
- Historic District
- NWI Wetland
- Nature Preserve
- Natural Area
- Park
- 100-Year Floodplain



Potential Impact Area
- Routes 2, 4, 5 Option 1, 5 Option 2, 9 Option 1 & 9 Option 2

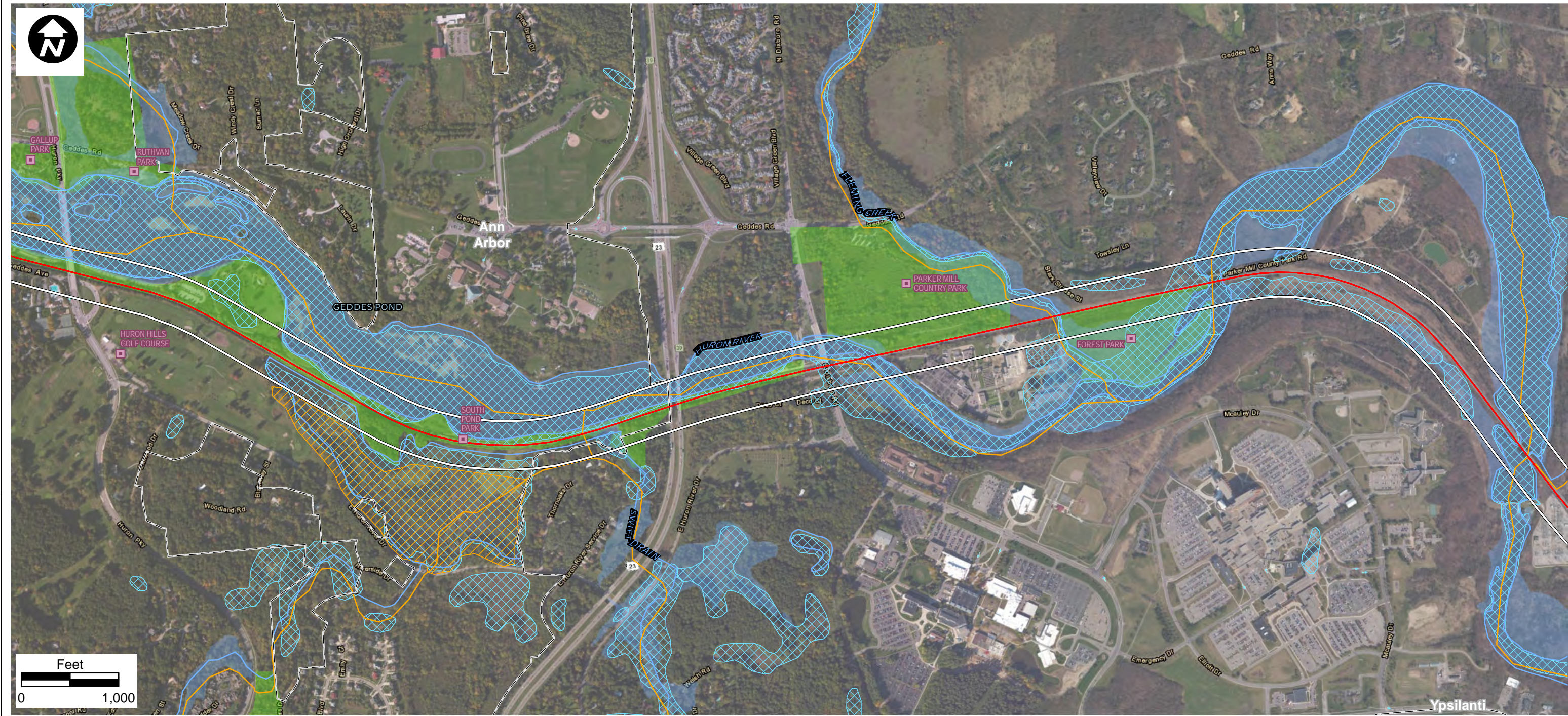
Background Copyright: © 2013 Esri, DeLorme, NAVTEQ, TomTom
Copyright: © 2013 Esri, DeLorme, NAVTEQ
Source: Esri, DigitalGlobe, GeoEye, i-cubed, USDA, USGS, AEX, Getmapping, Aerogrid, IGN, IGP, swisstopo, and the GIS User





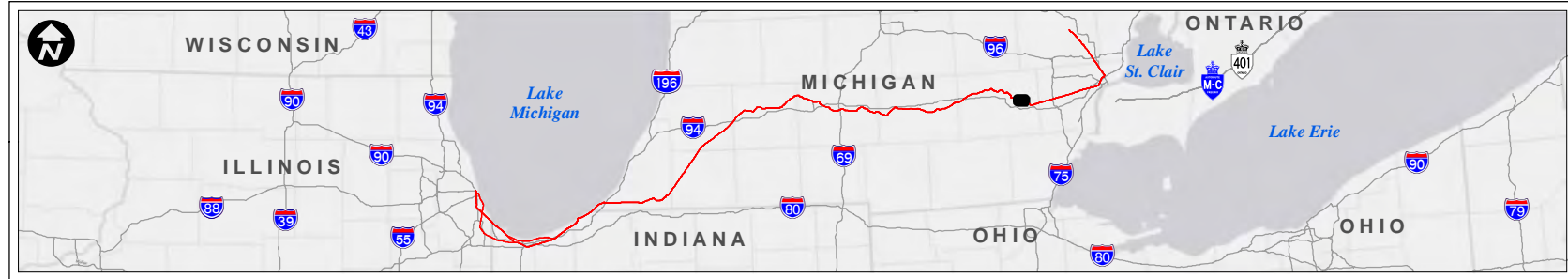
- Routes 2, 4, 5 Option 1, 5 Option 2, 9 Option 1 & 9 Option 2

Page 122 of 143



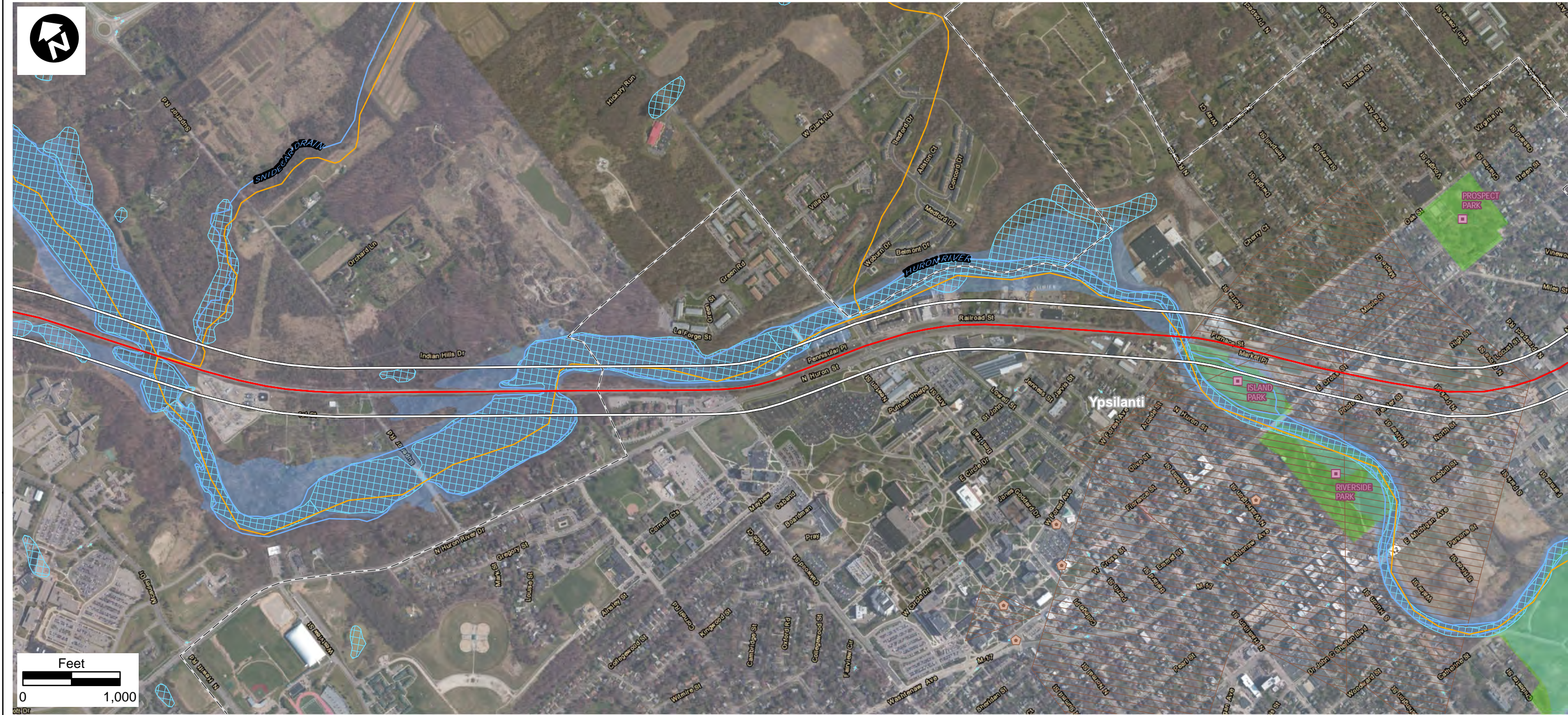
- Route Alternative
- Potential Impact Area
- State Boundary
- County Boundary
- Municipal Boundary
- Stream
- Impaired Waters
- Impaired Waters
- Park
- Recreation Area
- Historic Site
- Historic District
- NWI Wetland
- Nature Preserve
- Natural Area
- Park
- 100-Year Floodplain

Background Copyright: © 2013 Esri, DeLorme, NAVTEQ, TomTom
Copyright: © 2013 Esri, DeLorme, NAVTEQ
Source: Esri, DigitalGlobe, GeoEye, i-cubed, USDA, USGS, AEX, Getmapping, Aerogrid, IGN, IGP, swisstopo, and the GIS User



Potential Impact Area
- Routes 2, 4, 5 Option 1, 5 Option 2, 9 Option 1 & 9 Option 2





- Route Alternative
- Potential Impact Area
- State Boundary
- County Boundary
- Municipal Boundary
- Stream
- Impaired Waters
- Impaired Waters
- Park
- Recreation Area
- Historic Site
- Historic District
- NWI Wetland
- Nature Preserve
- Natural Area
- Park
- 100-Year Floodplain



Potential Impact Area
- Routes 2, 4, 5 Option 1, 5 Option 2, 9 Option 1 & 9 Option 2

Background Copyright: © 2013 Esri, DeLorme, NAVTEQ, TomTom
Copyright: © 2013 Esri, DeLorme, NAVTEQ
Source: Esri, DigitalGlobe, GeoEye, i-cubed, USDA, USGS, AEX, Getmapping, Aerogrid, IGN, IGP, swisstopo, and the GIS User





- Route Alternative
- Potential Impact Area
- State Boundary
- County Boundary
- Municipal Boundary
- Stream
- Impaired Waters
- Impaired Waters
- Park
- Recreation Area
- Historic Site
- Historic District
- NWI Wetland
- Nature Preserve
- Natural Area
- Park
- 100-Year Floodplain

Background Copyright: © 2013 Esri, DeLorme, NAVTEQ, TomTom
Copyright: © 2013 Esri, DeLorme, NAVTEQ
Source: Esri, DigitalGlobe, GeoEye, i-cubed, USDA, USGS, AEX, Getmapping, Aerogrid, IGN, IGP, swisstopo, and the GIS User



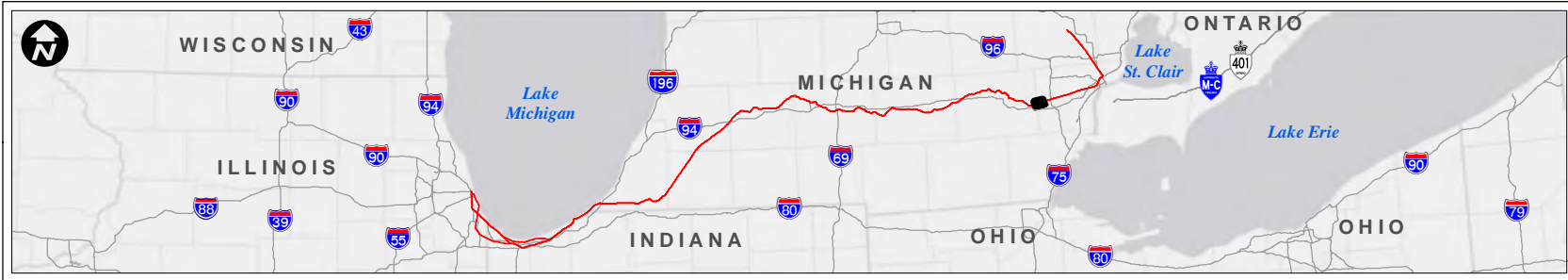
Potential Impact Area
- Routes 2, 4, 5 Option 1, 5 Option 2, 9 Option 1 & 9 Option 2





- Route Alternative
- Potential Impact Area
- State Boundary
- County Boundary
- Municipal Boundary
- Stream
- Impaired Waters
- Impaired Waters
- Park
- Recreation Area
- Historic Site
- Historic District
- NWI Wetland
- Nature Preserve
- Natural Area
- Park
- 100-Year Floodplain

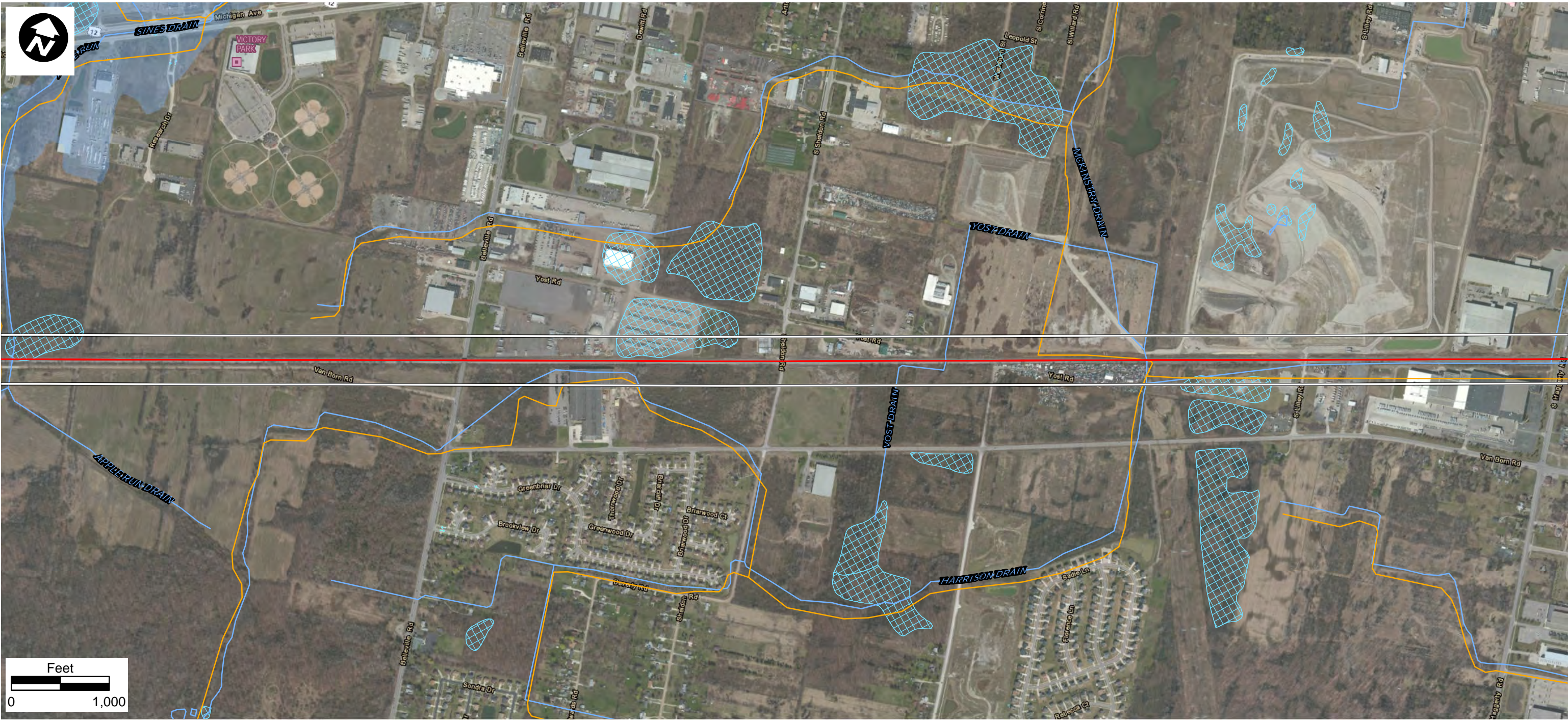
Background Copyright: © 2013 Esri, DeLorme, NAVTEQ, TomTom
Copyright: © 2013 Esri, DeLorme, NAVTEQ
Source: Esri, DigitalGlobe, GeoEye, i-cubed, USDA, USGS, AEX, Getmapping, Aerogrid, IGN, IGP, swisstopo, and the GIS User



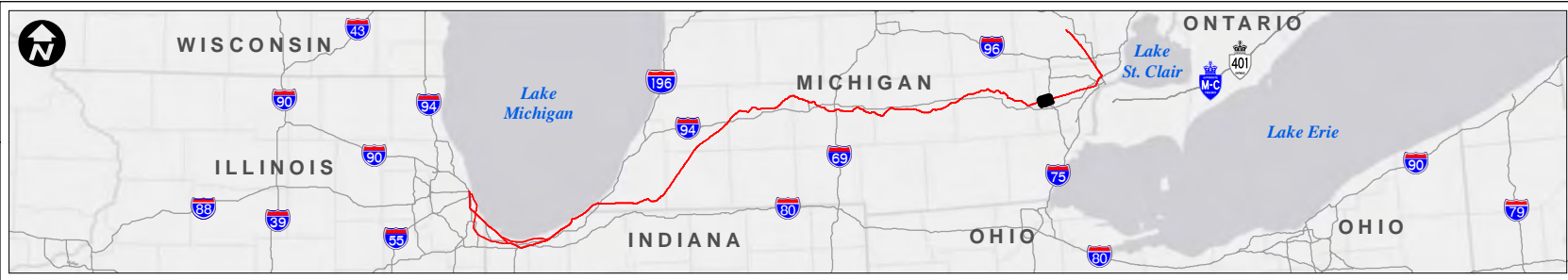
Potential Impact Area
- Routes 2, 4, 5 Option 1, 5 Option 2, 9 Option 1 & 9 Option 2



DATE	December 2013
APPENDIX	Page 126 of 143



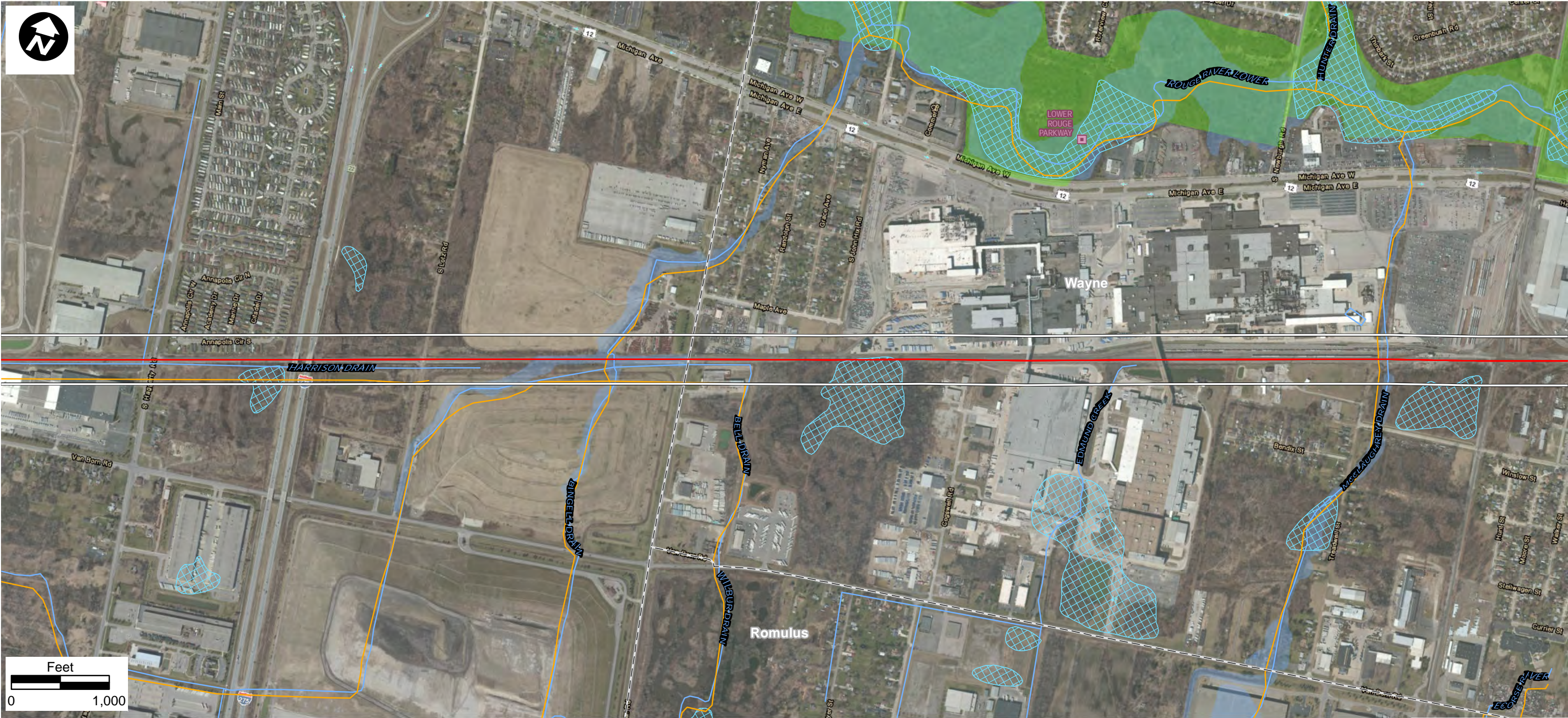
- | | |
|-----------------------|---------------------|
| Route Alternative | Historic District |
| Potential Impact Area | NWI Wetland |
| State Boundary | Nature Preserve |
| County Boundary | Natural Area |
| Municipal Boundary | Park |
| Stream | 100-Year Floodplain |
| Impaired Waters | |
| Impaired Waters | |
| Park | |
| Recreation Area | |
| Historic Site | |



Potential Impact Area
- Routes 2, 4, 5 Option 1, 5 Option 2, 9 Option 1 & 9 Option 2



Background Copyright: © 2013 Esri, DeLorme, NAVTEQ, TomTom
Copyright: © 2013 Esri, DeLorme, NAVTEQ
Source: Esri, DigitalGlobe, GeoEye, i-cubed, USDA, USGS, AEX, Getmapping, Aerogrid, IGN, IGP, swisstopo, and the GIS User



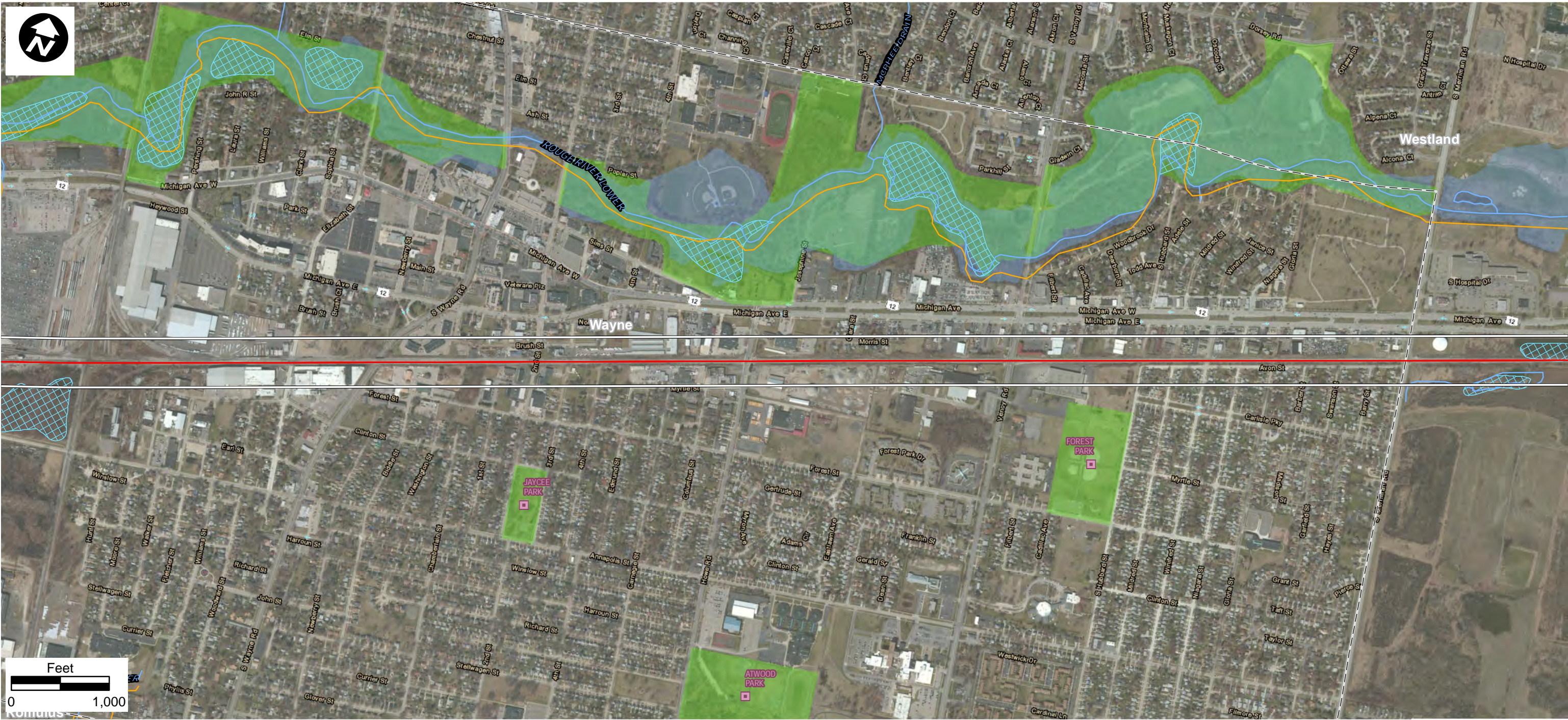
- | | | | |
|--|-----------------------|--|---------------------|
| | Route Alternative | | Historic District |
| | Potential Impact Area | | NWI Wetland |
| | State Boundary | | Nature Preserve |
| | County Boundary | | Natural Area |
| | Municipal Boundary | | Park |
| | Stream | | 100-Year Floodplain |
| | Impaired Waters | | |
| | Impaired Waters | | |
| | Park | | |
| | Recreation Area | | |
| | Historic Site | | |



Potential Impact Area
- Routes 2, 4, 5 Option 1, 5 Option 2, 9 Option 1 & 9 Option 2

Background Copyright: © 2013 Esri, DeLorme, NAVTEQ, TomTom
Copyright: © 2013 Esri, DeLorme, NAVTEQ
Source: Esri, DigitalGlobe, GeoEye, i-cubed, USDA, USGS, AEX, Getmapping, Aerogrid, IGN, IGP, swisstopo, and the GIS User





- Route Alternative
- Potential Impact Area
- State Boundary
- County Boundary
- Municipal Boundary
- Stream
- Impaired Waters
- Impaired Waters
- Park
- Recreation Area
- Historic Site
- Historic District
- NWI Wetland
- Nature Preserve
- Natural Area
- Park
- 100-Year Floodplain

Background Copyright: © 2013 Esri, DeLorme, NAVTEQ, TomTom
Copyright: © 2013 Esri, DeLorme, NAVTEQ
Source: Esri, DigitalGlobe, GeoEye, i-cubed, USDA, USGS, AEX, Getmapping, Aerogrid, IGN, IGP, swisstopo, and the GIS User



Potential Impact Area
- Routes 2, 4, 5 Option 1, 5 Option 2, 9 Option 1 & 9 Option 2



CHICAGO-DETROIT / PONTIAC PASSENGER RAIL CORRIDOR PROGRAM



- Route Alternative
- Potential Impact Area
- State Boundary
- County Boundary
- Municipal Boundary
- Stream
- Impaired Waters
- Impaired Waters
- Park
- Recreation Area
- Historic Site
- Historic District
- NWI Wetland
- Nature Preserve
- Natural Area
- Park
- 100-Year Floodplain

Background Copyright: © 2013 Esri, DeLorme, NAVTEQ, TomTom
Copyright: © 2013 Esri, DeLorme, NAVTEQ
Source: Esri, DigitalGlobe, GeoEye, i-cubed, USDA, USGS, AEX, Getmapping, Aerogrid, IGN, IGP, swisstopo, and the GIS User



Potential Impact Area
- Routes 2, 4, 5 Option 1, 5 Option 2, 9 Option 1 & 9 Option 2





Route Alternative

Potential Impact Area

State Boundary

County Boundary

Municipal Boundary

Stream

Impaired Waters

Impaired Waters

Park

Recreation Area

Historic Site

Historic District

NWI Wetland

Nature Preserve

Natural Area

Park

100-Year Floodplain

Background Copyright: © 2013 Esri, DeLorme, NAVTEQ, TomTom
Copyright: © 2013 Esri, DeLorme, NAVTEQ
Source: Esri, DigitalGlobe, GeoEye, i-cubed, USDA, USGS, AEX, Getmapping, Aerogrid, IGN, IGP, swisstopo, and the GIS User

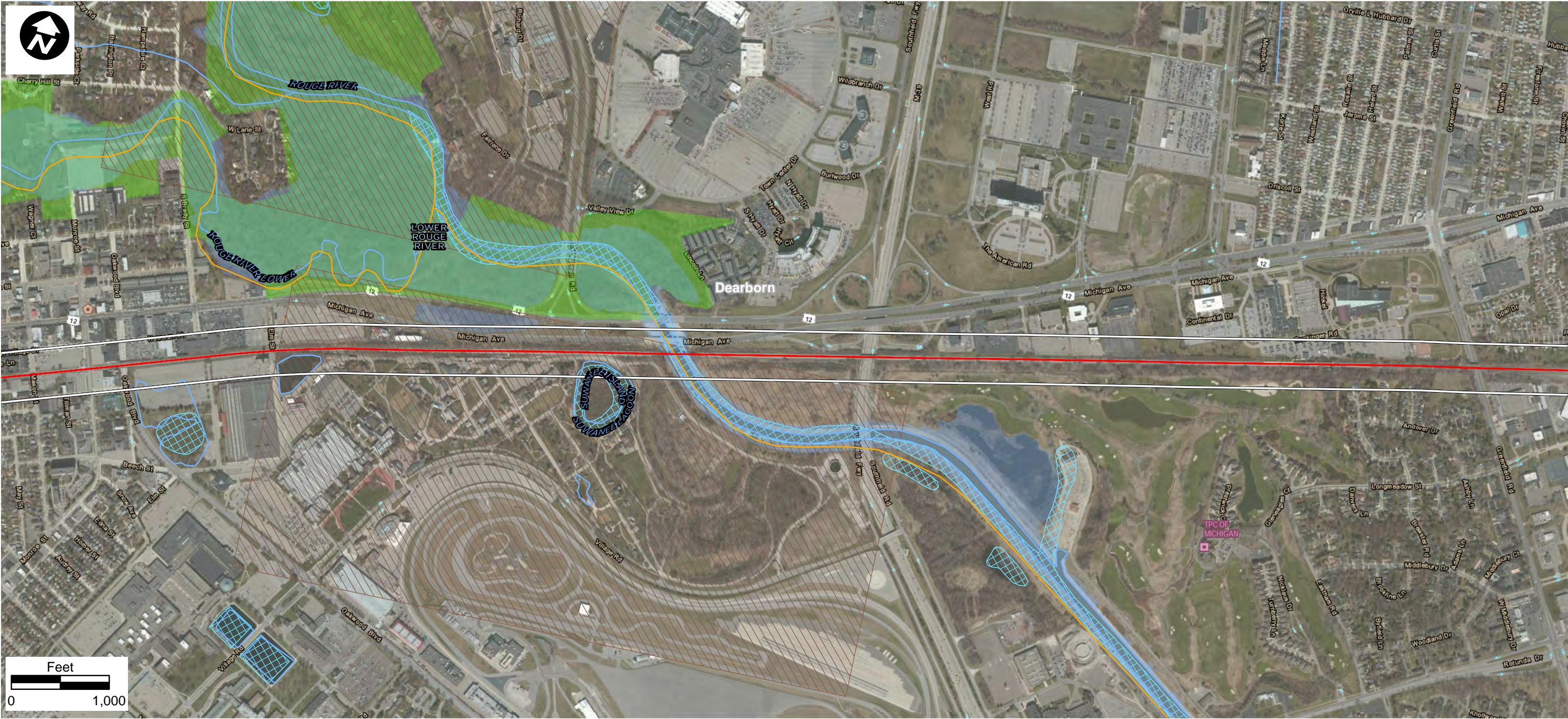
GreatLakesRail.org

Potential Impact Area
- Routes 2, 4, 5 Option 1, 5 Option 2, 9 Option 1 & 9 Option 2

CHICAGO-DETROIT / PONTIAC PASSENGER RAIL CORRIDOR PROGRAM

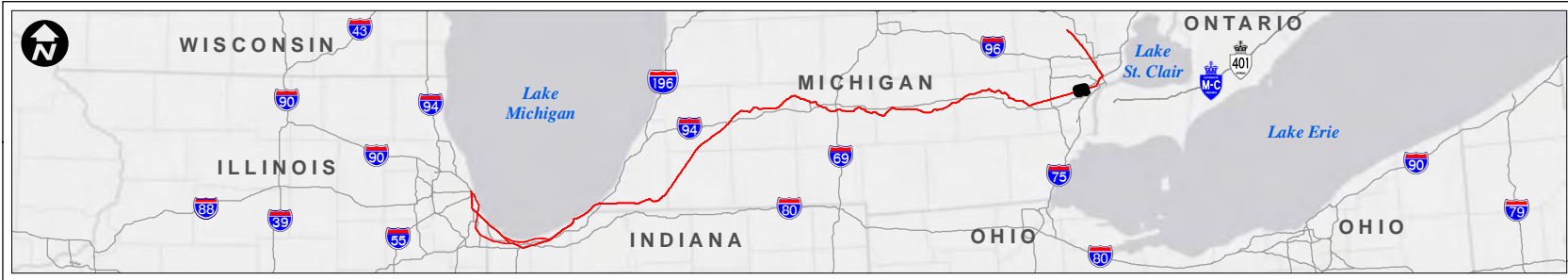
DATE
December 2013

APPENDIX
Page 131 of 143



- Route Alternative
- Potential Impact Area
- State Boundary
- County Boundary
- Municipal Boundary
- Stream
- Impaired Waters
- Impaired Waters
- Park
- Recreation Area
- Historic Site
- Historic District
- NWI Wetland
- Nature Preserve
- Natural Area
- Park
- 100-Year Floodplain

Background Copyright: © 2013 Esri, DeLorme, NAVTEQ, TomTom
Copyright: © 2013 Esri, DeLorme, NAVTEQ
Source: Esri, DigitalGlobe, GeoEye, i-cubed, USDA, USGS, AEX, Getmapping, Aerogrid, IGN, IGP, swisstopo, and the GIS User



Potential Impact Area
- Routes 2, 4, 5 Option 1, 5 Option 2, 9 Option 1 & 9 Option 2





- Route Alternative
- Potential Impact Area
- State Boundary
- County Boundary
- Municipal Boundary
- Stream
- Impaired Waters
- Impaired Waters
- Park
- Recreation Area
- Historic Site
- Historic District
- NWI Wetland
- Nature Preserve
- Natural Area
- Park
- 100-Year Floodplain

Background Copyright: © 2013 Esri, DeLorme, NAVTEQ, TomTom
Copyright: © 2013 Esri, DeLorme, NAVTEQ
Source: Esri, DigitalGlobe, GeoEye, i-cubed, USDA, USGS, AEX, Getmapping, Aerogrid, IGN, IGP, swisstopo, and the GIS User



Potential Impact Area
- Routes 2, 4, 5 Option 1, 5 Option 2, 9 Option 1 & 9 Option 2





- Route Alternative
- Potential Impact Area
- State Boundary
- County Boundary
- Municipal Boundary
- Stream
- Impaired Waters
- Impaired Waters
- Park
- Recreation Area
- Historic Site
- Historic District
- NWI Wetland
- Nature Preserve
- Natural Area
- Park
- 100-Year Floodplain

Background Copyright: © 2013 Esri, DeLorme, NAVTEQ, TomTom
Copyright: © 2013 Esri, DeLorme, NAVTEQ
Source: Esri, DigitalGlobe, GeoEye, i-cubed, USDA, USGS, AEX, Getmapping, Aerogrid, IGN, IGP, swisstopo, and the GIS User



Potential Impact Area
- Routes 2, 4, 5 Option 1, 5 Option 2, 9 Option 1 & 9 Option 2



CHICAGO-DETROIT / PONTIAC PASSENGER RAIL CORRIDOR PROGRAM



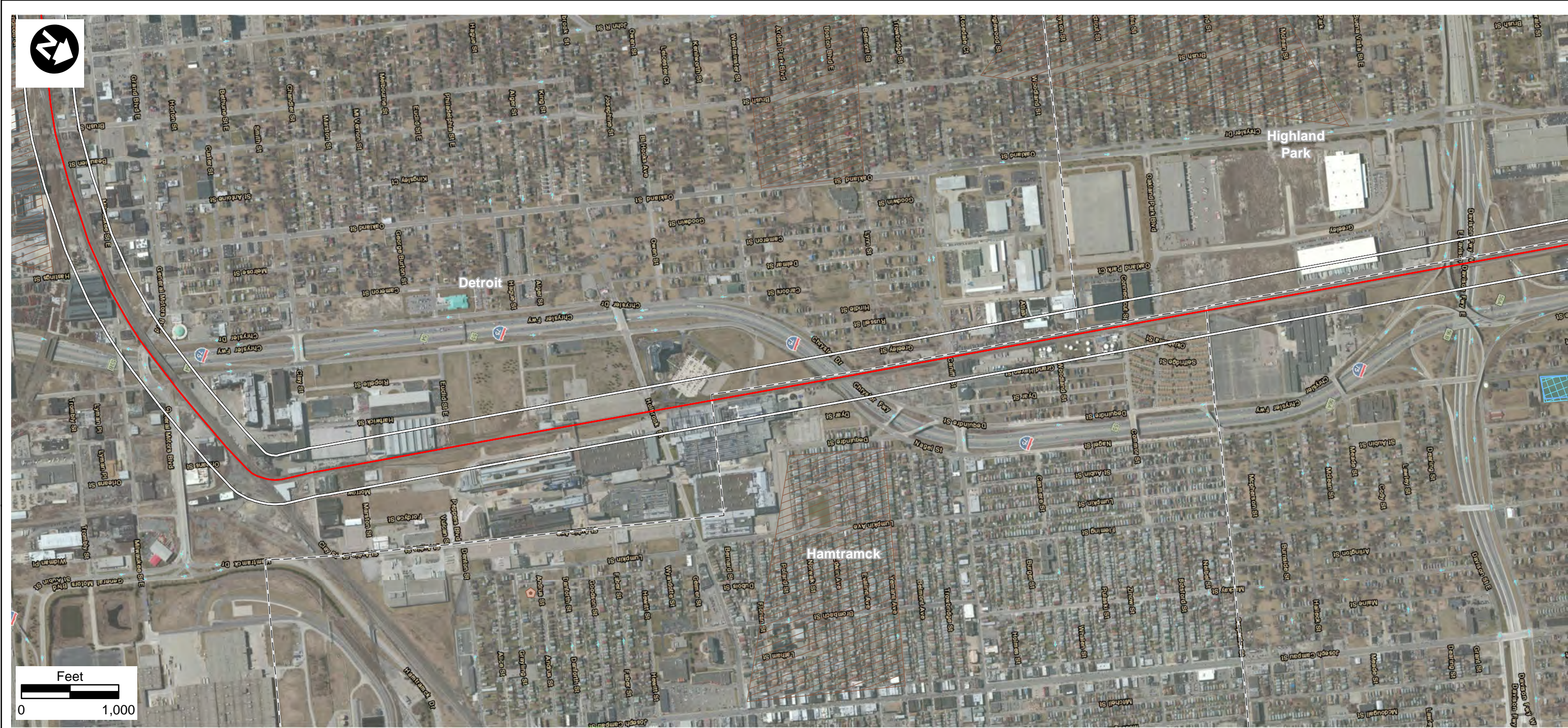
- Route Alternative
- Potential Impact Area
- State Boundary
- County Boundary
- Municipal Boundary
- Stream
- Impaired Waters
- Impaired Waters
- Park
- Recreation Area
- Historic Site
- Historic District
- NWI Wetland
- Nature Preserve
- Natural Area
- Park
- 100-Year Floodplain



Potential Impact Area
- Routes 2, 4, 5 Option 1, 5 Option 2, 9 Option 1 & 9 Option 2

Background Copyright: © 2013 Esri, DeLorme, NAVTEQ, TomTom
Copyright: © 2013 Esri, DeLorme, NAVTEQ
Source: Esri, DigitalGlobe, GeoEye, i-cubed, USDA, USGS, AEX, Getmapping, Aerogrid, IGN, IGP, swisstopo, and the GIS User





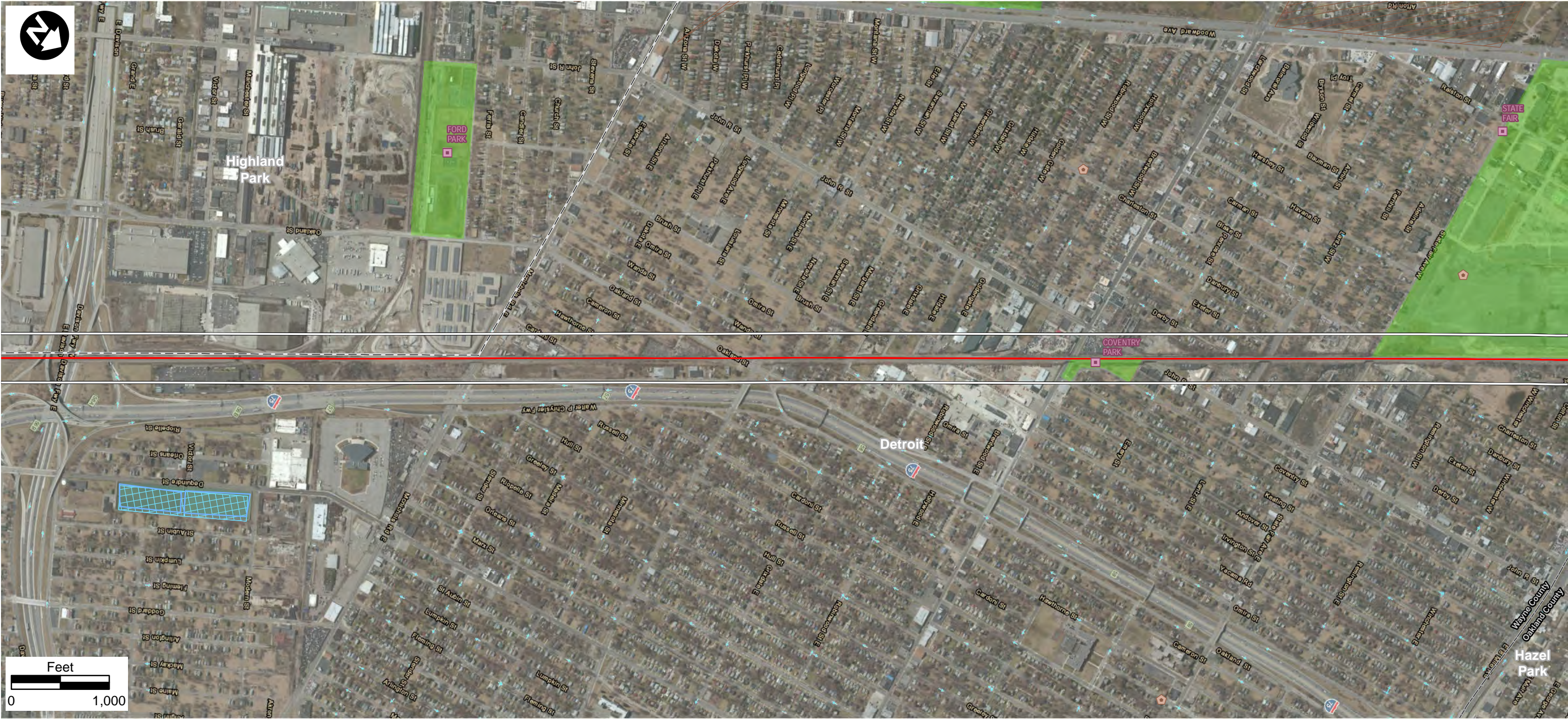
- | | | | |
|--|-----------------------|--|---------------------|
| | Route Alternative | | Historic District |
| | Potential Impact Area | | NWI Wetland |
| | State Boundary | | Nature Preserve |
| | County Boundary | | Natural Area |
| | Municipal Boundary | | Park |
| | Stream | | 100-Year Floodplain |
| | Impaired Waters | | |
| | Impaired Waters | | |
| | Park | | |
| | Recreation Area | | |
| | Historic Site | | |

Background Copyright: © 2013 Esri, DeLorme, NAVTEQ, TomTom
Copyright: © 2013 Esri, DeLorme, NAVTEQ
Source: Esri, DigitalGlobe, GeoEye, i-cubed, USDA, USGS, AEX, Getmapping, Aerogrid, IGN, IGP, swisstopo, and the GIS User



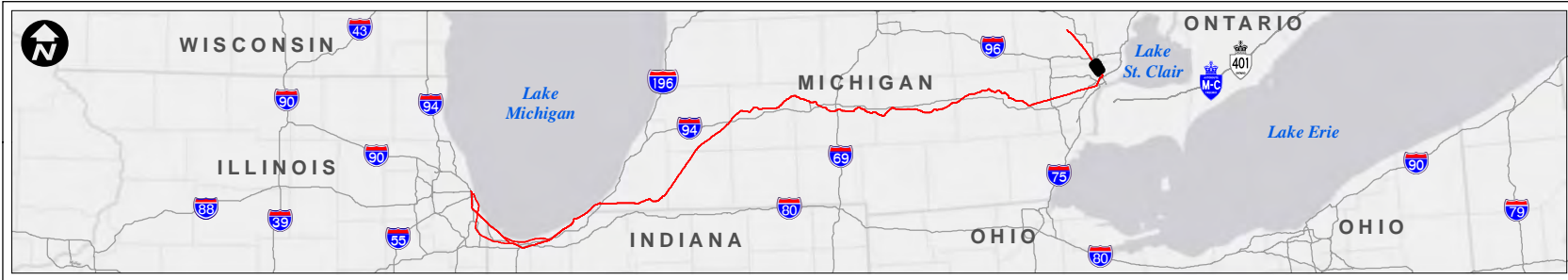
Potential Impact Area
- Routes 2, 4, 5 Option 1, 5 Option 2, 9 Option 1 & 9 Option 2





- Route Alternative
- Potential Impact Area
- State Boundary
- County Boundary
- Municipal Boundary
- Stream
- Impaired Waters
- Impaired Waters
- Park
- Recreation Area
- Historic Site
- Historic District
- NWI Wetland
- Nature Preserve
- Natural Area
- Park
- 100-Year Floodplain

Background Copyright: © 2013 Esri, DeLorme, NAVTEQ, TomTom
Copyright: © 2013 Esri, DeLorme, NAVTEQ
Source: Esri, DigitalGlobe, GeoEye, i-cubed, USDA, USGS, AEX, Getmapping, Aerogrid, IGN, IGP, swisstopo, and the GIS User



Potential Impact Area
- Routes 2, 4, 5 Option 1, 5 Option 2, 9 Option 1 & 9 Option 2





- Route Alternative
- Potential Impact Area
- State Boundary
- County Boundary
- Municipal Boundary
- Stream
- Impaired Waters
- Impaired Waters
- Park
- Recreation Area
- Historic Site
- Historic District
- NWI Wetland
- Nature Preserve
- Natural Area
- Park
- 100-Year Floodplain



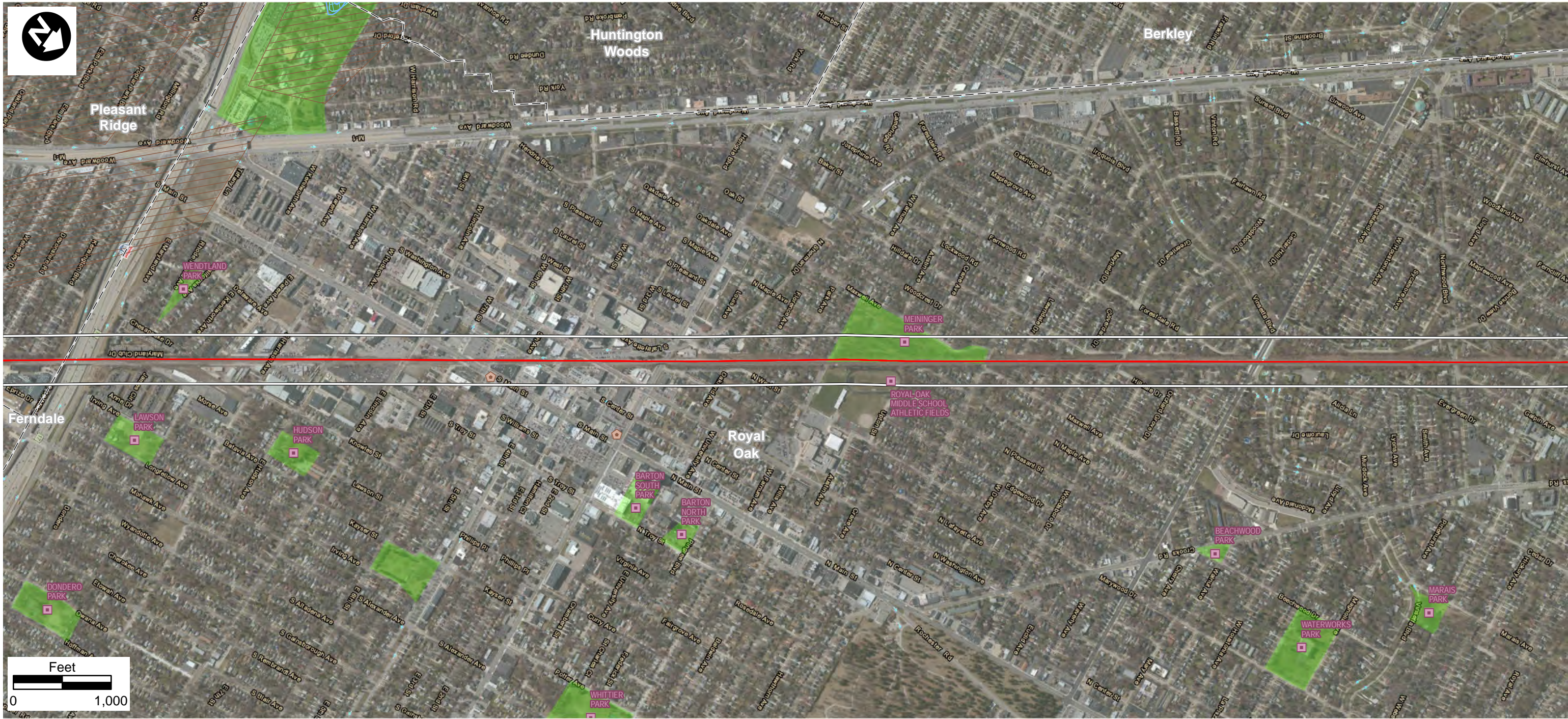
Potential Impact Area
- Routes 2, 4, 5 Option 1, 5 Option 2, 9 Option 1 & 9 Option 2

DATE
December 2013

APPENDIX
Page 138 of 143

Background Copyright: © 2013 Esri, DeLorme, NAVTEQ, TomTom
Copyright: © 2013 Esri, DeLorme, NAVTEQ
Source: Esri, DigitalGlobe, GeoEye, i-cubed, USDA, USGS, AEX, Getmapping, Aerogrid, IGN, IGP, swisstopo, and the GIS User





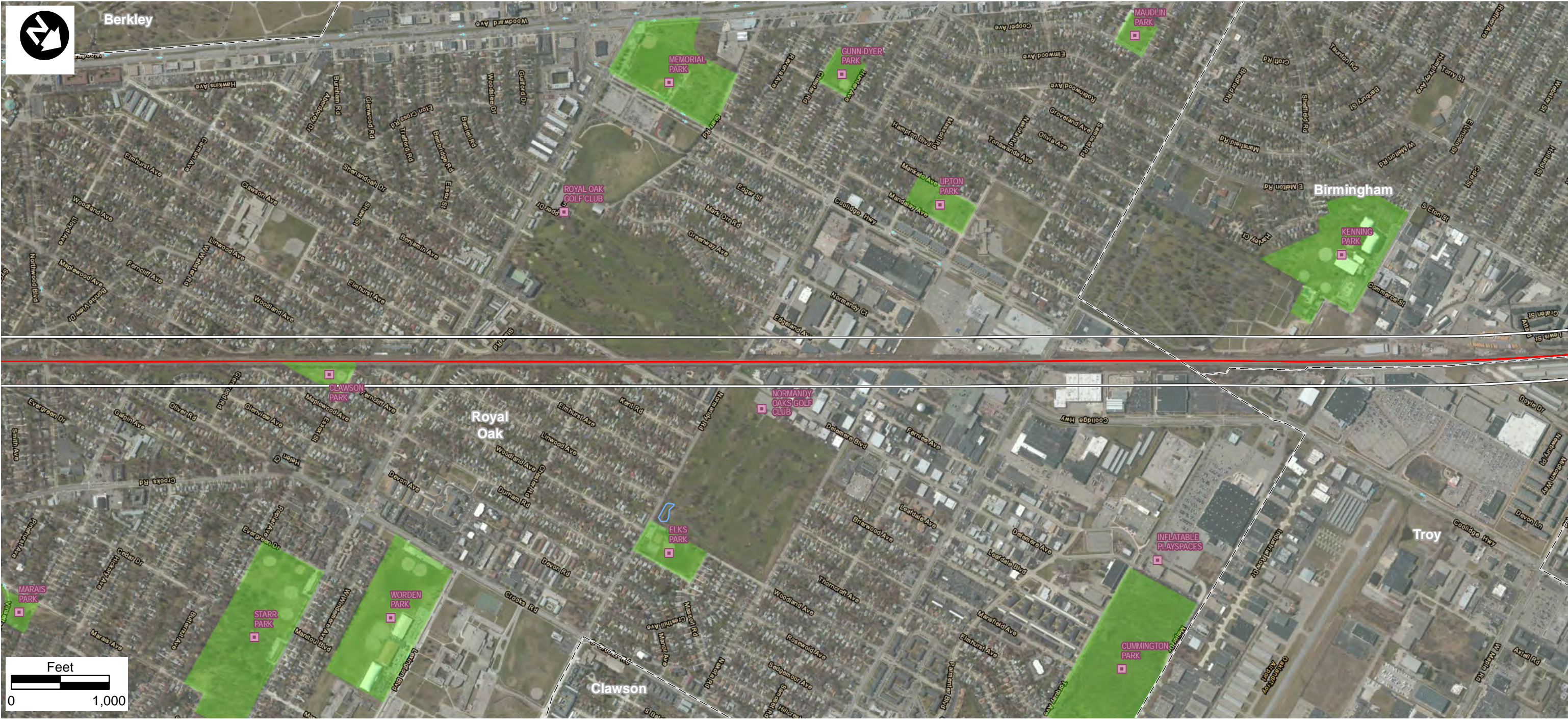
- Route Alternative
- Potential Impact Area
- State Boundary
- County Boundary
- Municipal Boundary
- Stream
- Impaired Waters
- Impaired Waters
- Park
- Recreation Area
- Historic Site
- Historic District
- NWI Wetland
- Nature Preserve
- Natural Area
- Park
- 100-Year Floodplain



Potential Impact Area
- Routes 2, 4, 5 Option 1, 5 Option 2, 9 Option 1 & 9 Option 2



Background Copyright: © 2013 Esri, DeLorme, NAVTEQ, TomTom
Copyright: © 2013 Esri, DeLorme, NAVTEQ
Source: Esri, DigitalGlobe, GeoEye, i-cubed, USDA, USGS, AEX, Getmapping, Aerogrid, IGN, IGP, swisstopo, and the GIS User



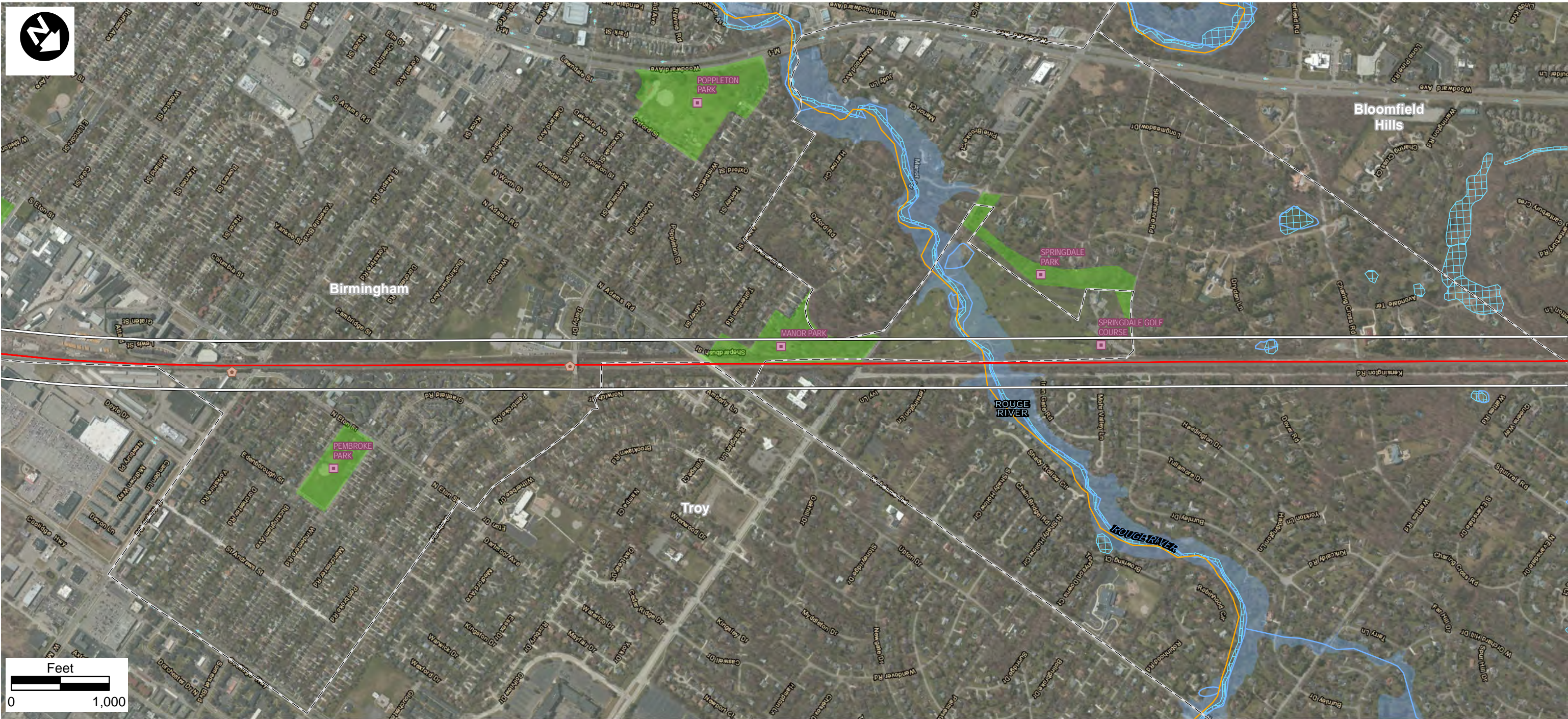
- Route Alternative
- Potential Impact Area
- State Boundary
- County Boundary
- Municipal Boundary
- Stream
- Impaired Waters
- Impaired Waters
- Park
- Recreation Area
- Historic Site
- Historic District
- NWI Wetland
- Nature Preserve
- Natural Area
- Park
- 100-Year Floodplain



Potential Impact Area
- Routes 2, 4, 5 Option 1, 5 Option 2, 9 Option 1 & 9 Option 2

Background Copyright: © 2013 Esri, DeLorme, NAVTEQ, TomTom
Copyright: © 2013 Esri, DeLorme, NAVTEQ
Source: Esri, DigitalGlobe, GeoEye, i-cubed, USDA, USGS, AEX, Getmapping, Aerogrid, IGN, IGP, swisstopo, and the GIS User





- Route Alternative
- Potential Impact Area
- State Boundary
- County Boundary
- Municipal Boundary
- Stream
- Impaired Waters
- Impaired Waters
- Park
- Recreation Area
- Historic Site
- Historic District
- NWI Wetland
- Nature Preserve
- Natural Area
- Park
- 100-Year Floodplain



Potential Impact Area
- Routes 2, 4, 5 Option 1, 5 Option 2, 9 Option 1 & 9 Option 2

DATE
December 2013

APPENDIX
Page 141 of 143

Background Copyright: © 2013 Esri, DeLorme, NAVTEQ, TomTom
Copyright: © 2013 Esri, DeLorme, NAVTEQ
Source: Esri, DigitalGlobe, GeoEye, i-cubed, USDA, USGS, AEX, Getmapping, Aerogrid, IGN, IGP, swisstopo, and the GIS User





- | | |
|-----------------------|---------------------|
| Route Alternative | Historic District |
| Potential Impact Area | NWI Wetland |
| State Boundary | Nature Preserve |
| County Boundary | Natural Area |
| Municipal Boundary | Park |
| Stream | 100-Year Floodplain |
| Impaired Waters | |
| Impaired Waters | |
| Park | |
| Recreation Area | |
| Historic Site | |



Potential Impact Area
- Routes 2, 4, 5 Option 1, 5 Option 2, 9 Option 1 & 9 Option 2

Background Copyright: © 2013 Esri, DeLorme, NAVTEQ, TomTom
Copyright: © 2013 Esri, DeLorme, NAVTEQ
Source: Esri, DigitalGlobe, GeoEye, i-cubed, USDA, USGS, AEX, Getmapping, Aerogrid, IGN, IGP, swisstopo, and the GIS User





- Route Alternative
- Potential Impact Area
- State Boundary
- County Boundary
- Municipal Boundary
- Stream
- Impaired Waters
- Impaired Waters
- Park
- Recreation Area
- Historic Site
- Historic District
- NWI Wetland
- Nature Preserve
- Natural Area
- Park
- 100-Year Floodplain

Background Copyright: © 2013 Esri, DeLorme, NAVTEQ, TomTom
Copyright: © 2013 Esri, DeLorme, NAVTEQ
Source: Esri, DigitalGlobe, GeoEye, i-cubed, USDA, USGS, AEX, Getmapping, Aerogrid, IGN, IGP, swisstopo, and the GIS User



Potential Impact Area
- Routes 2, 4, 5 Option 1, 5 Option 2, 9 Option 1 & 9 Option 2

