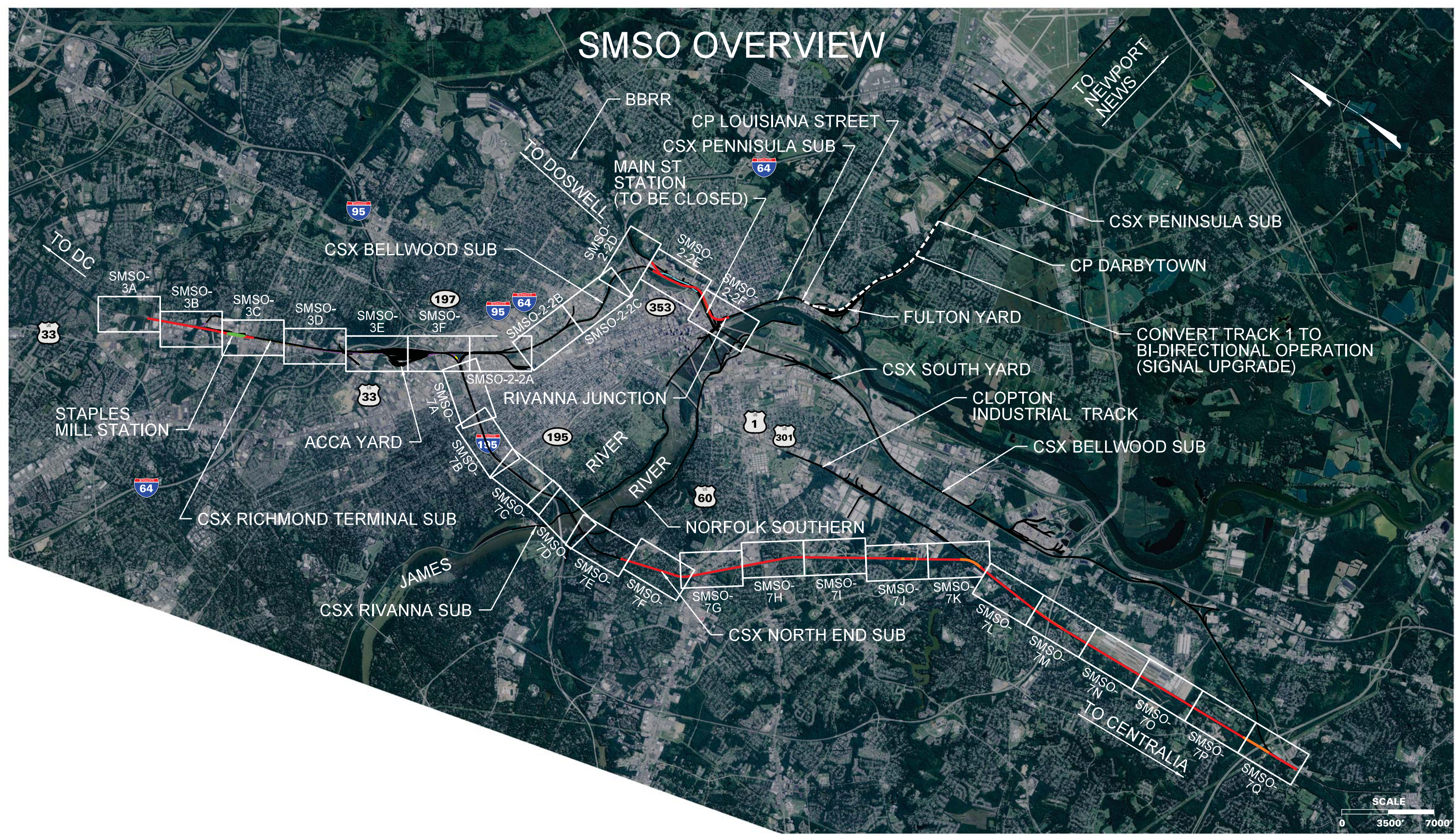


SMSO OVERVIEW



THESE PLANS ARE UNFINISHED AND UNAPPROVED AND ARE NOT TO BE USED FOR ANY TYPE OF CONSTRUCTION OR THE ACQUISITION OF RIGHT OF WAY.

LEGEND	
DC2RVA TRACK	—
DC2RVA SHIFTED TRACK	—
DC2RVA STATION PLATFORM	—
R2R TRACK	—
MAINLINE RELOCATION TRACK	—
RETIRED TRACK	—
EXISTING TRACK	—
EXISTING RW	—

Revisions		
No.	Description	Date

DESIGNED BY	DRPT Virginia Department of Rail and Public Transportation		
DRAWN BY	Virginia Department of Rail and Public Transportation		
CHECKED BY	Washington D.C. to Richmond Southeast High Speed Rail		
DATE	11/17/2015		
SCALE	As Shown		
PROJECT NO.	DRAWING NO.	SHEET NO.	
	EE	1	

11/13/2015 4:35:52 PM
Plotted by: cpowell
SMSO OVERVIEW.dgn

SMSO-3A



TO DC

HUNGARY RD

E. PARHAM RD

TO STAPLES
MILL STATION

SCALE



0 150' 300'

LEGEND

- DC2RVA TRACK
- DC2RVA SHIFTED TRACK
- DC2RVA STATION PLATFORM
- R2R TRACK
- MAINLINE RELOCATION TRACK
- RETIRED TRACK
- EXISTING TRACK
- EXISTING R/W

Revisions		
No.	Description	Date

DESIGNED BY
DRAWN BY
CHECKED BY
DATE 11/17/2015
SCALE As Shown



Virginia Department of Rail and Public Transportation

Washington D.C. to Richmond Southeast High Speed Rail

RIC Staples Mill Station Only (SMSO)

Alignment Option Mapbook

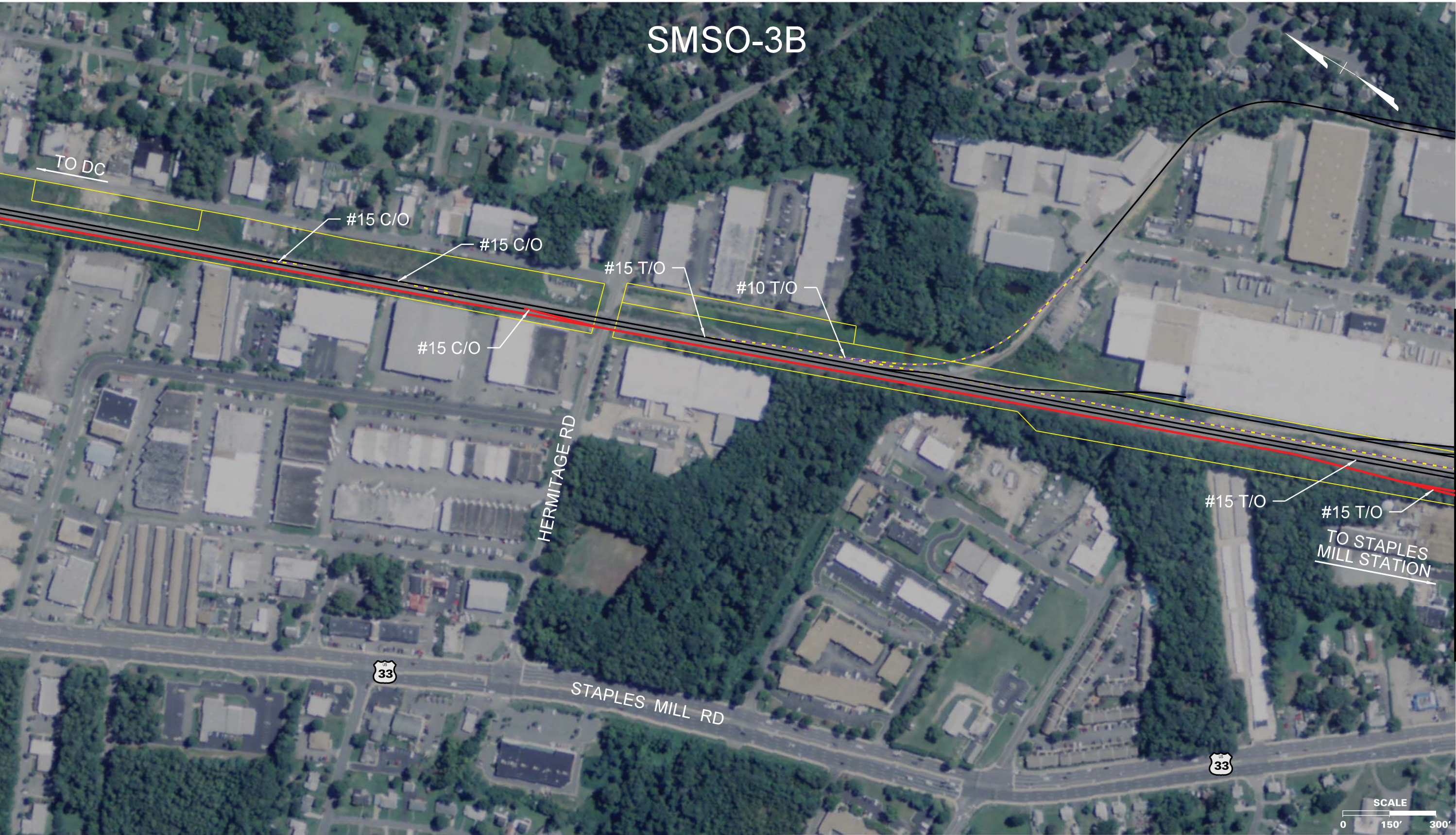
PROJECT NO.	DRAWING NO. EE	SHEET NO. 2
-------------	-------------------	----------------

THESE PLANS ARE UNFINISHED AND UNAPPROVED AND ARE NOT TO BE USED FOR ANY TYPE OF CONSTRUCTION OR THE ACQUISITION OF RIGHT OF WAY.

SMSO-3B

MATCHLINE SEE SHEET SMSO-3A

MATCHLINE SEE SHEET SMSO-3C



THESE PLANS ARE UNFINISHED AND UNAPPROVED AND ARE NOT TO BE USED FOR ANY TYPE OF CONSTRUCTION OR THE ACQUISITION OF RIGHT OF WAY.

LEGEND

DC2RVA TRACK	
DC2RVA SHIFTED TRACK	
DC2RVA STATION PLATFORM	
R2R TRACK	
MAINLINE RELOCATION TRACK	
RETIRED TRACK	
EXISTING TRACK	
EXISTING R/W	

Revisions		
No.	Description	Date

DESIGNED BY

DRAWN BY

CHECKED BY

DATE
11/17/2015

SCALE
As Shown

Virginia Department of Rail and Public Transportation

Richmond Southeast High Speed Rail

RIC Staples Mill Station Only (SMSO)
Alignment Option Mapbook

PROJECT NO.	DRAWING NO. EE	SHEET NO. 3
-------------	-------------------	----------------

SMSO-3C

MATCHLINE SEE SHEET SMSO-3B

MATCHLINE SEE SHEET SMSO-3D





THESE PLANS ARE UNFINISHED AND UNAPPROVED AND ARE NOT TO BE USED FOR ANY TYPE OF CONSTRUCTION OR THE ACQUISITION OF RIGHT OF WAY.

LEGEND

- DC2RVA TRACK
- DC2RVA SHIFTED TRACK
- DC2RVA STATION PLATFORM
- R2R TRACK
- MAINLINE RELOCATION TRACK
- RETIRED TRACK
- EXISTING TRACK
- EXISTING RW

Revisions		
No.	Description	Date

DESIGNED BY
DRAWN BY
CHECKED BY
DATE 11/17/2015
SCALE As Shown



Virginia Department of Rail and Public Transportation

Washington D.C. to Richmond Southeast High Speed Rail

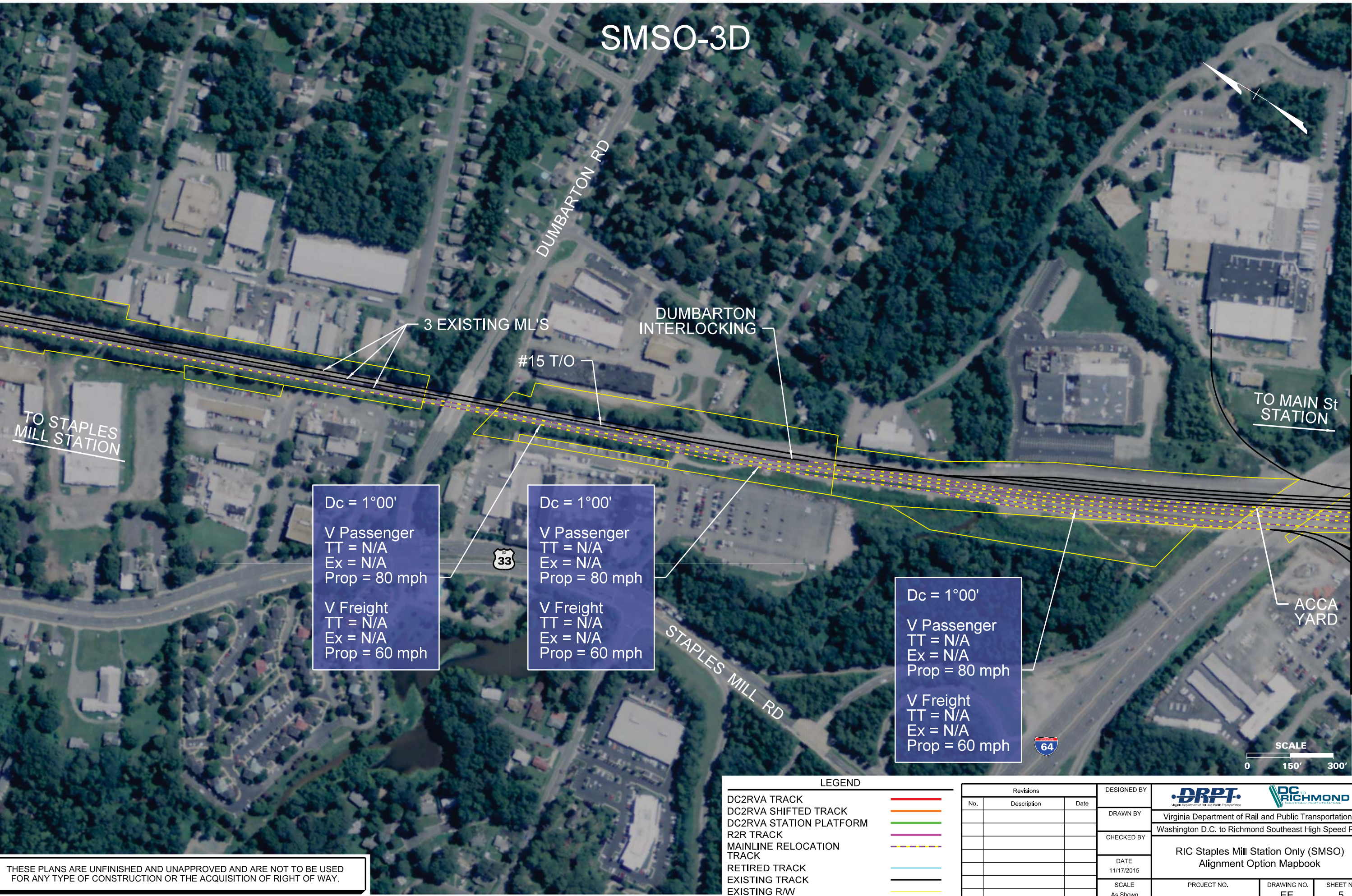
RIC Staples Mill Station Only (SMSO)
Alignment Option Mapbook

PROJECT NO.	DRAWING NO. EE	SHEET NO. 4
-------------	-------------------	----------------

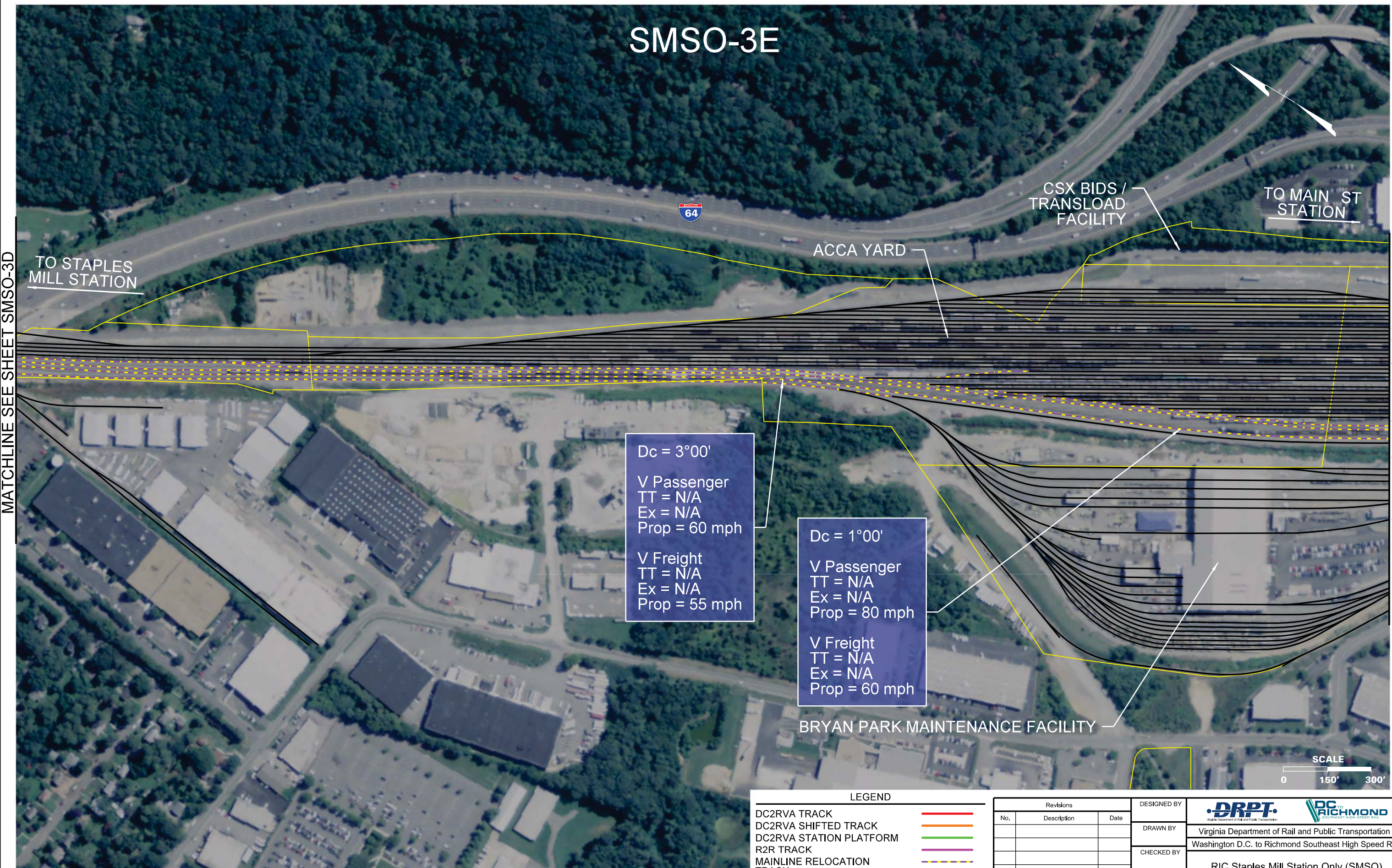
SMSO-3D

MATCHLINE SEE SHEET SMSO-3C

MATCHLINE SEE SHEET SMSO-3E



SMSO-3E



MATCHLINE SEE SHEET SMSO-3D

MATCHLINE SEE SHEET SMSO-3F

Dc = 3°00'
V Passenger
TT = N/A
Ex = N/A
Prop = 60 mph

V Freight
TT = N/A
Ex = N/A
Prop = 55 mph

Dc = 1°00'
V Passenger
TT = N/A
Ex = N/A
Prop = 80 mph

V Freight
TT = N/A
Ex = N/A
Prop = 60 mph



LEGEND

DC2RVA TRACK	
DC2RVA SHIFTED TRACK	
DC2RVA STATION PLATFORM	
R2R TRACK	
MAINLINE RELOCATION TRACK	
RETIRED TRACK	
EXISTING TRACK	
EXISTING R/W	

Revisions			DESIGNED BY
No.	Description	Date	

DRAWN BY	DRPT Virginia Department of Rail and Public Transportation		
CHECKED BY	Virginia Department of Rail and Public Transportation Washington D.C. to Richmond Southeast High Speed Rail		
DATE	11/17/2015		
SCALE	As Shown		

RIC Staples Mill Station Only (SMSO) Alignment Option Mapbook		
PROJECT NO.	DRAWING NO. EE	SHEET NO. 6

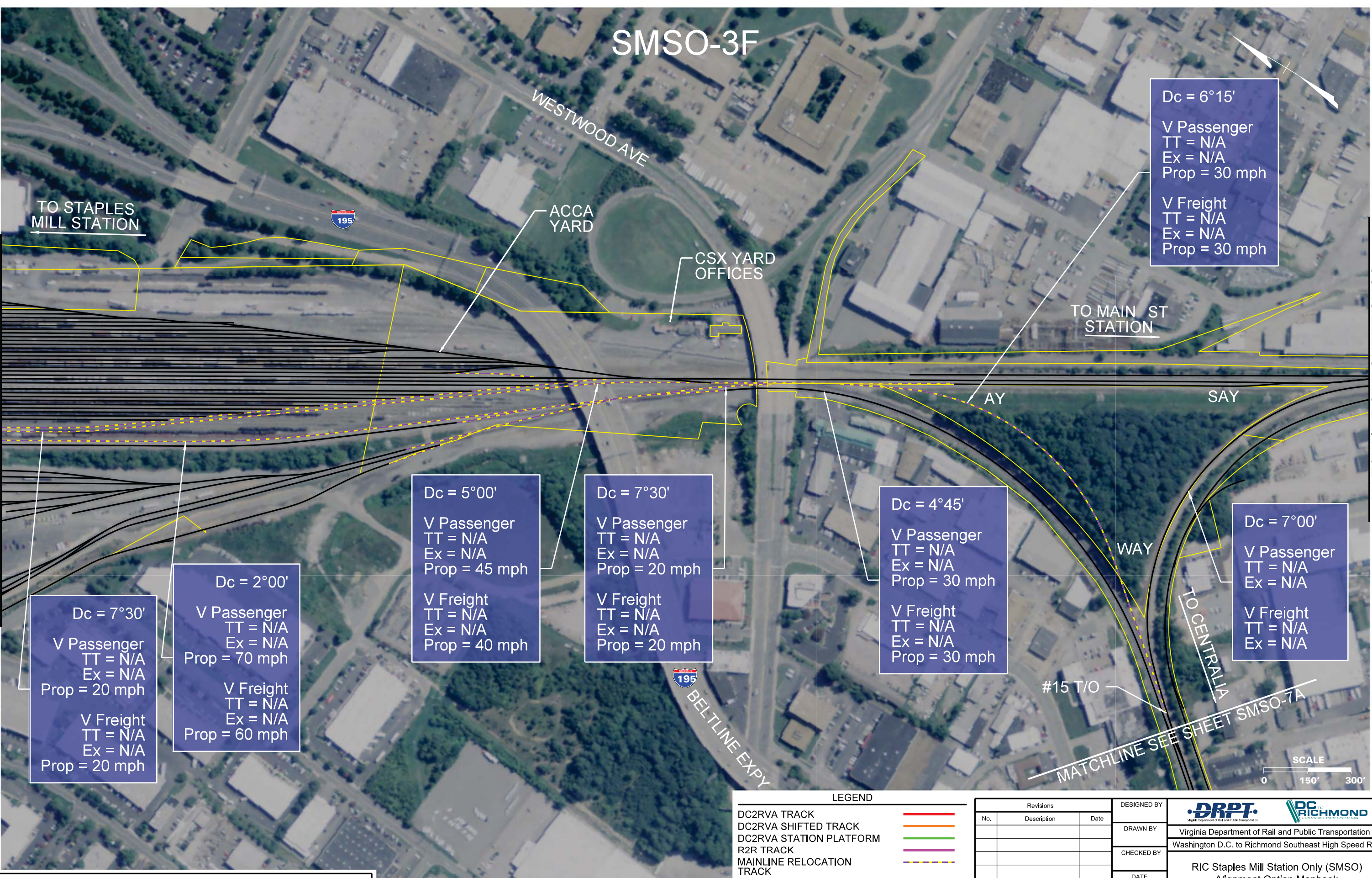
THESE PLANS ARE UNFINISHED AND UNAPPROVED AND ARE NOT TO BE USED FOR ANY TYPE OF CONSTRUCTION OR THE ACQUISITION OF RIGHT OF WAY.

11/13/2015 4:44:31 PM
Plotted by cpowell
SMSO-3E.dgn

SMSO-3F

MATCHLINE SEE SHEET SMSO-3E

MATCHLINE SEE SHEET SMSO-2-2A



THESE PLANS ARE UNFINISHED AND UNAPPROVED AND ARE NOT TO BE USED FOR ANY TYPE OF CONSTRUCTION OR THE ACQUISITION OF RIGHT OF WAY.

LEGEND

DC2RVA TRACK	
DC2RVA SHIFTED TRACK	
DC2RVA STATION PLATFORM	
R2R TRACK	
MAINLINE RELOCATION TRACK	
RETIRED TRACK	
EXISTING TRACK	
EXISTING R/W	

Revisions		
No.	Description	Date

DESIGNED BY	 Virginia Department of Rail and Public Transportation Washington D.C. to Richmond Southeast High Speed Rail
DRAWN BY	
CHECKED BY	
DATE	11/17/2015
SCALE	As Shown

PROJECT NO.	DRAWING NO.	SHEET NO.
	EE	7

11/13/2015 4:44:37 PM
Plotted by cpowell
SMSO-3F.dgn

SMSO-2-2A

MATCHLINE SEE SHEET SMSO-3F

TO ACCA YARD

N BOULEVARD

HERMITAGE ROAD

TO MAIN ST
STATION

MATCHLINE SEE SHEET
SMSO-2-2B

Dc = 2°15'
V Passenger
TT = 40 mph
Ex = 40 mph

V Freight
TT = 25 mph
Ex = 30 mph

161

W LEIGH RD





THESE PLANS ARE UNFINISHED AND UNAPPROVED AND ARE NOT TO BE USED FOR ANY TYPE OF CONSTRUCTION OR THE ACQUISITION OF RIGHT OF WAY.

LEGEND

- DC2RVA TRACK
- DC2RVA SHIFTED TRACK
- DC2RVA STATION PLATFORM
- R2R TRACK
- MAINLINE RELOCATION TRACK
- RETIRED TRACK
- EXISTING TRACK
- EXISTING R/W

Revisions		
No.	Description	Date

DESIGNED BY	<div><div></div><div>Virginia Department of Rail and Public Transportation</div><div>Washington D.C. to Richmond Southeast High Speed Rail</div></div>		
DRAWN BY	Virginia Department of Rail and Public Transportation		
CHECKED BY	Washington D.C. to Richmond Southeast High Speed Rail		
DATE	11/17/2015		
SCALE	RIC Staples Mill Station Only (SMSO) Alignment Option Mapbook		
As Shown	PROJECT NO.	DRAWING NO.	SHEET NO.
		EE	8

SMO-2-2B



MATCHLINE SEE SHEET SMO-2-2A

MATCHLINE SHEET SEE SMO-2-2C

LEGEND

DC2RVA TRACK	
DC2RVA SHIFTED TRACK	
DC2RVA STATION PLATFORM	
R2R TRACK	
MAINLINE RELOCATION TRACK	
RETIRED TRACK	
EXISTING TRACK	
EXISTING RW	

Revisions			DESIGNED BY
No.	Description	Date	

DRAWN BY	 Virginia Department of Rail and Public Transportation Washington D.C. to Richmond Southeast High Speed Rail		
CHECKED BY			
DATE 11/17/2015	RIC Staples Mill Station Only (SMO) Alignment Option Mapbook		
SCALE As Shown	PROJECT NO.	DRAWING NO. EE	SHEET NO. 9

THESE PLANS ARE UNFINISHED AND UNAPPROVED AND ARE NOT TO BE USED FOR ANY TYPE OF CONSTRUCTION OR THE ACQUISITION OF RIGHT OF WAY.

SMO-2-2C

CHAMBERLAYNE AVENUE

BROOK RD

TO ACCA YARD

TO MAIN ST
STATION

Dc = 3°30'
V Passenger
TT = 30 mph
Ex = 55 mph
V Freight
TT = 25 mph
Ex = 45 mph

Dc = 6°00'
V Passenger
TT = 30 mph
Ex = 40 mph
V Freight
TT = 25 mph
Ex = 30 mph

Dc = 4°00'
V Passenger
TT = 30 mph
Ex = 50 mph
V Freight
TT = 25 mph
Ex = 45 mph

Dc = 4°00'
V Passenger
TT = 30 mph
Ex = 40 mph
V Freight
TT = 25 mph
Ex = 30 mph



MATCHLINE SEE SHEET SMO-2-2B

MATCHLINE SEE SHEET SMO-2-2D

LEGEND

DC2RVA TRACK	
DC2RVA SHIFTED TRACK	
DC2RVA STATION PLATFORM	
R2R TRACK	
MAINLINE RELOCATION TRACK	
RETIRED TRACK	
EXISTING TRACK	
EXISTING R/W	

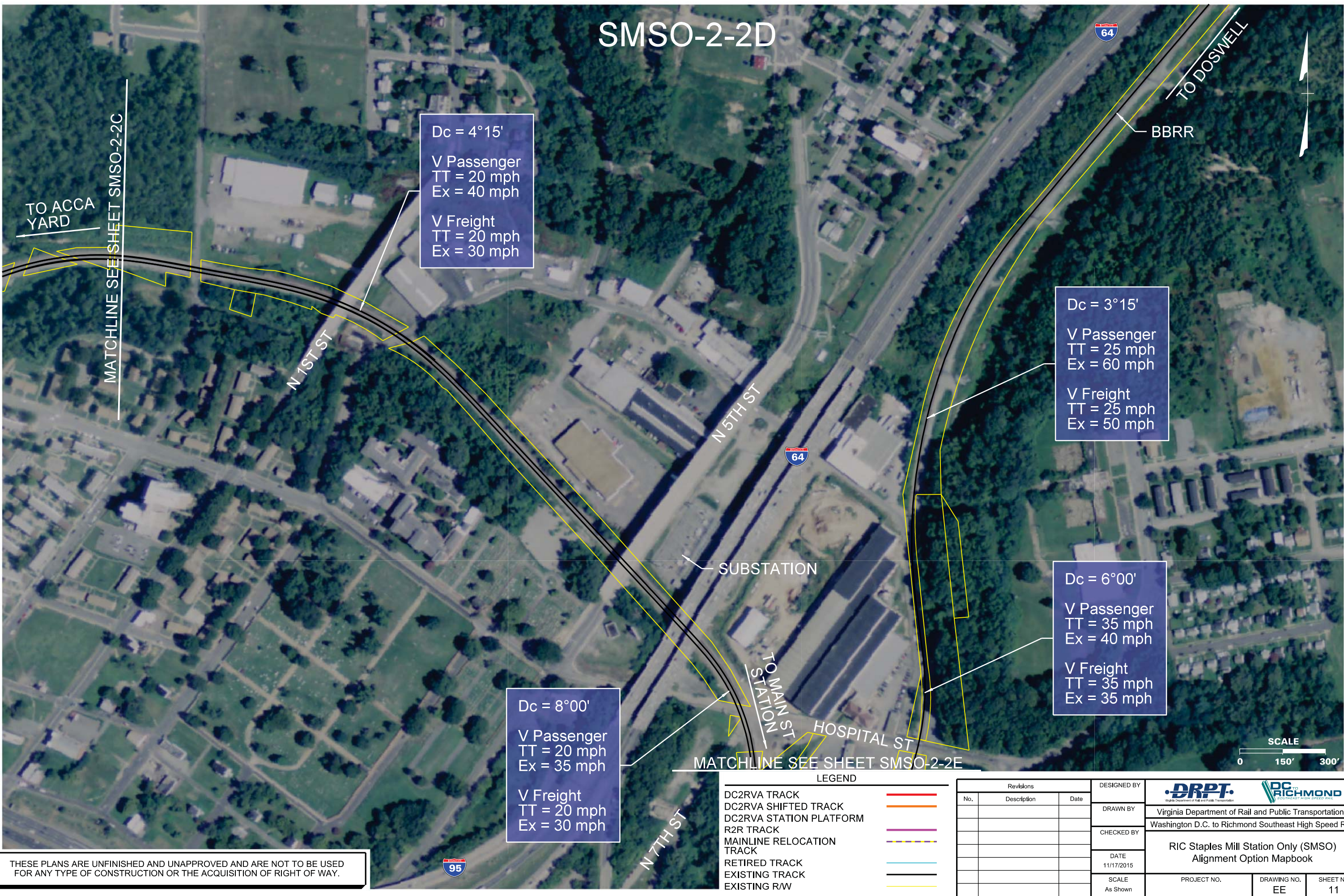
Revisions		
No.	Description	Date

DESIGNED BY			
DRAWN BY	Virginia Department of Rail and Public Transportation		
CHECKED BY	Washington D.C. to Richmond Southeast High Speed Rail		
DATE	11/17/2015		
SCALE	As Shown		

RIC Staples Mill Station Only (SMO)		
Alignment Option Mapbook		
PROJECT NO.	DRAWING NO.	SHEET NO.
	EE	10



THESE PLANS ARE UNFINISHED AND UNAPPROVED AND ARE NOT TO BE USED FOR ANY TYPE OF CONSTRUCTION OR THE ACQUISITION OF RIGHT OF WAY.

SMSO-2-2D



THESE PLANS ARE UNFINISHED AND UNAPPROVED AND ARE NOT TO BE USED FOR ANY TYPE OF CONSTRUCTION OR THE ACQUISITION OF RIGHT OF WAY.

Plotted by cpowell 11/13/2015 4:44:58 PM SMSO-02-2D.dgn

Revisions			DESIGNED BY	 Virginia Department of Rail and Public Transportation	 DC to RICHMOND SOUTHEAST HIGH SPEED RAIL	
No.	Description	Date				
			DRAWN BY	Virginia Department of Rail and Public Transportation		
			CHECKED BY	Washington D.C. to Richmond Southeast High Speed Rail		
			DATE	RIC Staples Mill Station Only (SMSO) Alignment Option Mapbook		
			11/17/2015			
			SCALE	PROJECT NO.	DRAWING NO.	SHEET NO.
			As Shown		EE	11

SMSO-2-2E

Dc = 5°00'
V Passenger
TT = N/A
Ex = N/A
Prop = 45 mph

V Freight
TT = N/A
Ex = N/A
Prop = 40 mph

Dc = 5°45'
V Passenger
TT = N/A
Ex = N/A
Prop = 45 mph

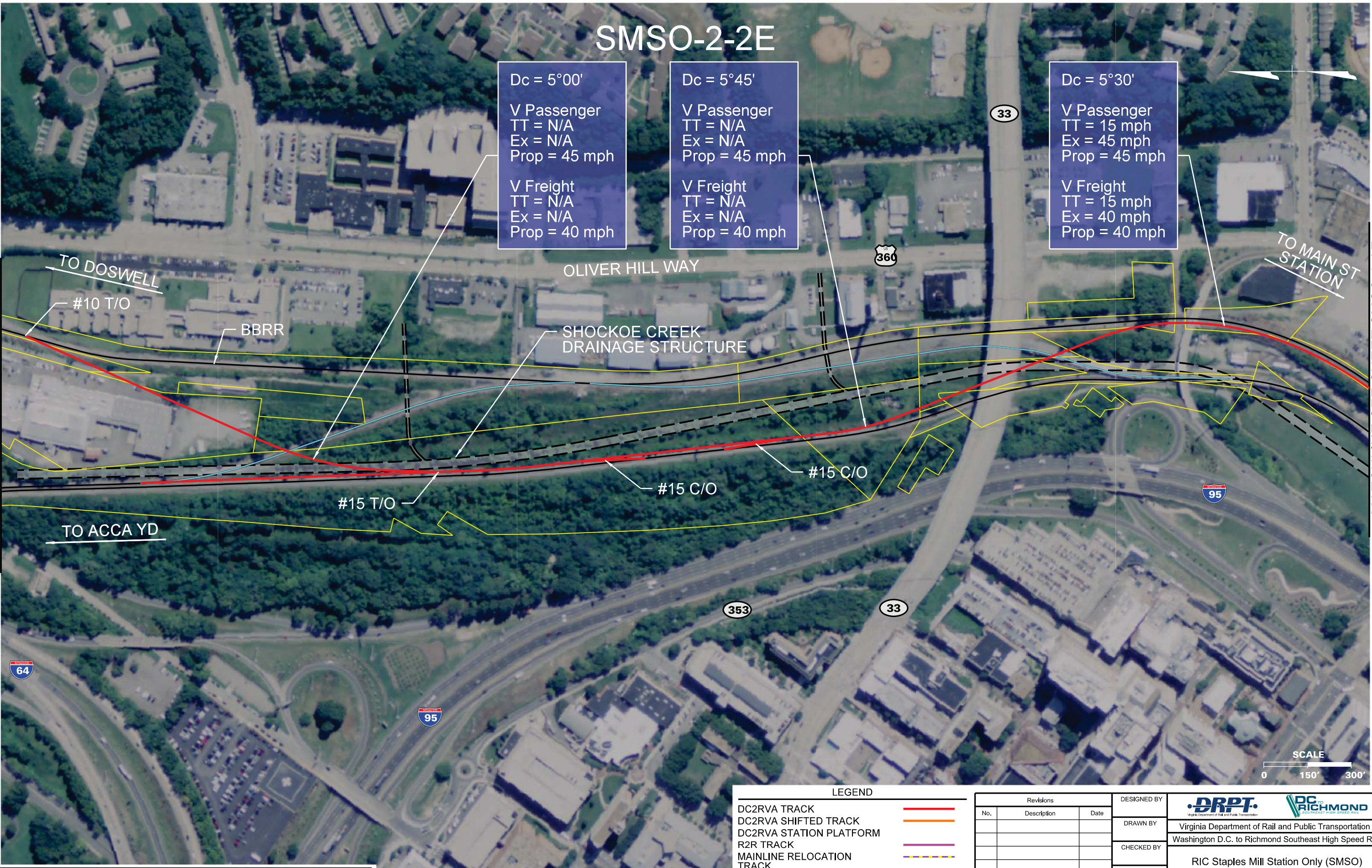
V Freight
TT = N/A
Ex = N/A
Prop = 40 mph

Dc = 5°30'
V Passenger
TT = 15 mph
Ex = 45 mph
Prop = 45 mph

V Freight
TT = 15 mph
Ex = 40 mph
Prop = 40 mph

MATCHLINE SEE SHEET SMSO-2-2D

MATCHLINE SEE SHEET SMSO-2-2F



THESE PLANS ARE UNFINISHED AND UNAPPROVED AND ARE NOT TO BE USED FOR ANY TYPE OF CONSTRUCTION OR THE ACQUISITION OF RIGHT OF WAY.

LEGEND

DC2RVA TRACK	Red solid line
DC2RVA SHIFTED TRACK	Orange solid line
DC2RVA STATION PLATFORM	Purple solid line
R2R TRACK	Blue solid line
MAINLINE RELOCATION TRACK	Black dashed line
RETIRED TRACK	Light blue solid line
EXISTING TRACK	Black solid line
EXISTING R/W	Yellow solid line

Revisions		
No.	Description	Date

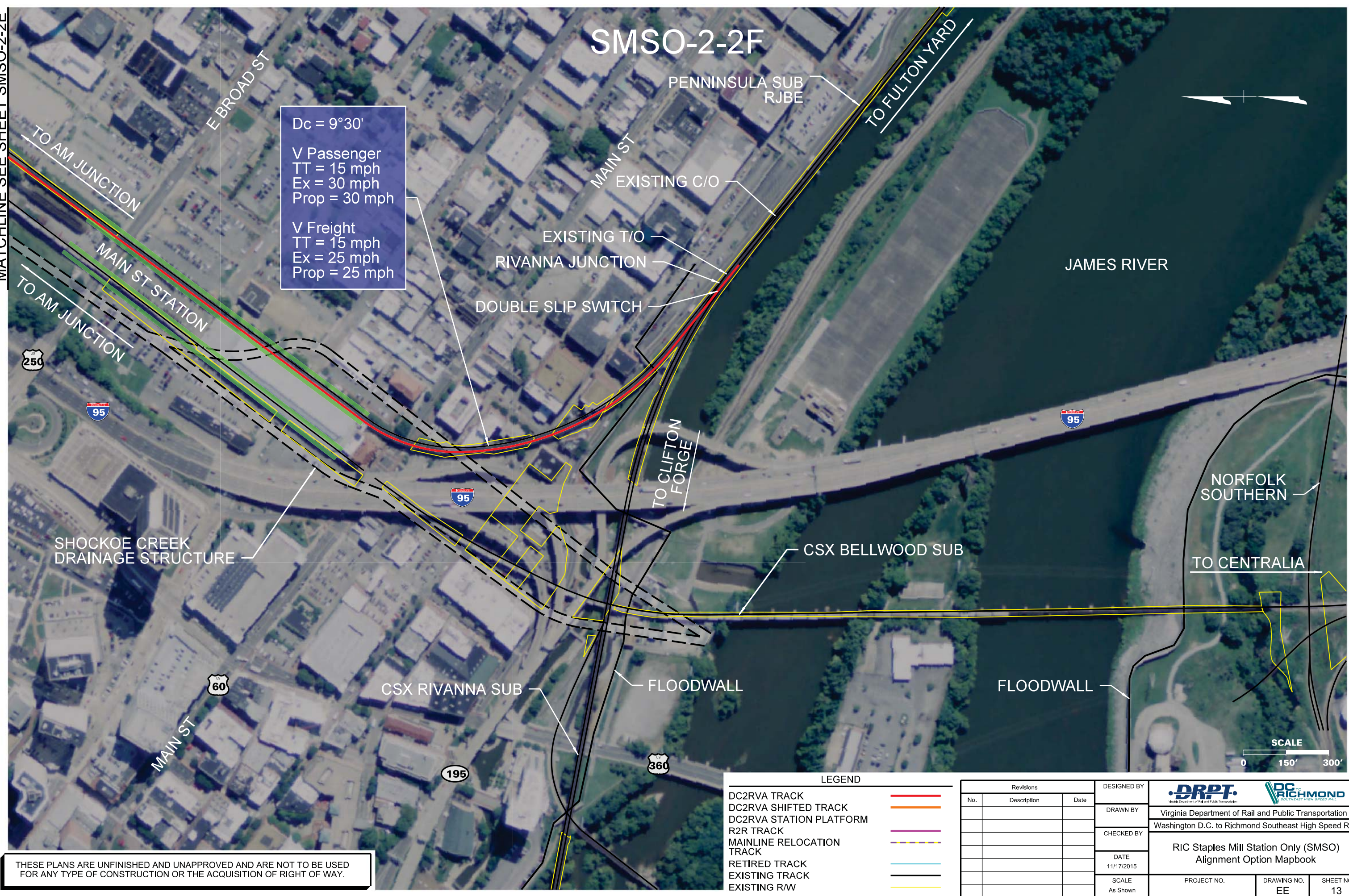
DESIGNED BY	 Virginia Department of Rail and Public Transportation
DRAWN BY	
CHECKED BY	
DATE	11/17/2015
SCALE	As Shown

 Virginia Department of Rail and Public Transportation	Washington D.C. to Richmond Southeast High Speed Rail		
	RIC Staples Mill Station Only (SMSO) Alignment Option Mapbook		
PROJECT NO.	DRAWING NO. EE	SHEET NO. 12	

11/13/2015 4:50:02 PM
Plotted by cpowell
SMSO-02-2E.dgn

MATCHLINE SEE SHEET SMSO-2-2E

SMSO-2-2F





Dc = 9°30'
V Passenger
TT = 15 mph
Ex = 30 mph
Prop = 30 mph

V Freight
TT = 15 mph
Ex = 25 mph
Prop = 25 mph

LEGEND		
DC2RVA TRACK		
DC2RVA SHIFTED TRACK		
DC2RVA STATION PLATFORM		
R2R TRACK		
MAINLINE RELOCATION TRACK		
RETIRED TRACK		
EXISTING TRACK		
EXISTING RW		

Revisions		
No.	Description	Date

DESIGNED BY
DRAWN BY
CHECKED BY
DATE 11/17/2015
SCALE As Shown



Virginia Department of Rail and Public Transportation

Washington D.C. to Richmond Southeast High Speed Rail

RIC Staples Mill Station Only (SMSO)
Alignment Option Mapbook

PROJECT NO.	DRAWING NO. EE	SHEET NO. 13
-------------	-------------------	-----------------

THESE PLANS ARE UNFINISHED AND UNAPPROVED AND ARE NOT TO BE USED FOR ANY TYPE OF CONSTRUCTION OR THE ACQUISITION OF RIGHT OF WAY.

SMSO-7A



MATCHLINE SEE SHEET SMSO-3F

TO ACCA YARD

MATCHLINE SEE SHEET SMSO-7B

TO CENTRALIA

N. THOMPSON ST.

BELTLINE EXPY

HAMILTON ST

N HAMILTON ST

MONUMENT AVE.

SCALE



0 150' 300'

LEGEND

- DC2RVA TRACK
- DC2RVA SHIFTED TRACK
- DC2RVA STATION PLATFORM
- R2R TRACK
- MAINLINE RELOCATION TRACK
- RETIRED TRACK
- EXISTING TRACK
- EXISTING R/W

Revisions		
No.	Description	Date

DESIGNED BY
DRAWN BY
CHECKED BY
DATE 11/17/2015
SCALE As Shown



Virginia Department of Rail and Public Transportation

Washington D.C. to Richmond Southeast High Speed Rail

RIC Staples Mill Station Only (SMSO)

Alignment Option Mapbook

PROJECT NO.	DRAWING NO. EE	SHEET NO. 14
-------------	-------------------	-----------------

THESE PLANS ARE UNFINISHED AND UNAPPROVED AND ARE NOT TO BE USED FOR ANY TYPE OF CONSTRUCTION OR THE ACQUISITION OF RIGHT OF WAY.

SMSO-7B



THESE PLANS ARE UNFINISHED AND UNAPPROVED AND ARE NOT TO BE USED FOR ANY TYPE OF CONSTRUCTION OR THE ACQUISITION OF RIGHT OF WAY.

LEGEND	
DC2RVA TRACK	<div></div>
DC2RVA SHIFTED TRACK	<div></div>
DC2RVA STATION PLATFORM	<div></div>
R2R TRACK	<div></div>
MAINLINE RELOCATION TRACK	<div></div>
RETIRED TRACK	<div></div>
EXISTING TRACK	<div></div>
EXISTING R/W	<div></div>

Revisions		
No.	Description	Date

DESIGNED BY
DRAWN BY
CHECKED BY
DATE 11/17/2015
SCALE As Shown

<div><div>DRPT</div><div>Virginia Department of Rail and Public Transportation</div></div> <div><div>RIC</div><div>Richmond</div><div>GOVERNMENT OF VIRGINIA</div></div>		
Virginia Department of Rail and Public Transportation Washington D.C. to Richmond Southeast High Speed Rail		
RIC Staples Mill Station Only (SMSO) Alignment Option Mapbook		
PROJECT NO.	DRAWING NO. EE	SHEET NO. 15

SMSO-7C



Dc = 1°00'

V Passenger
TT = N/A
Ex = 80 mph

V Freight
TT = N/A
Ex = 60 mph

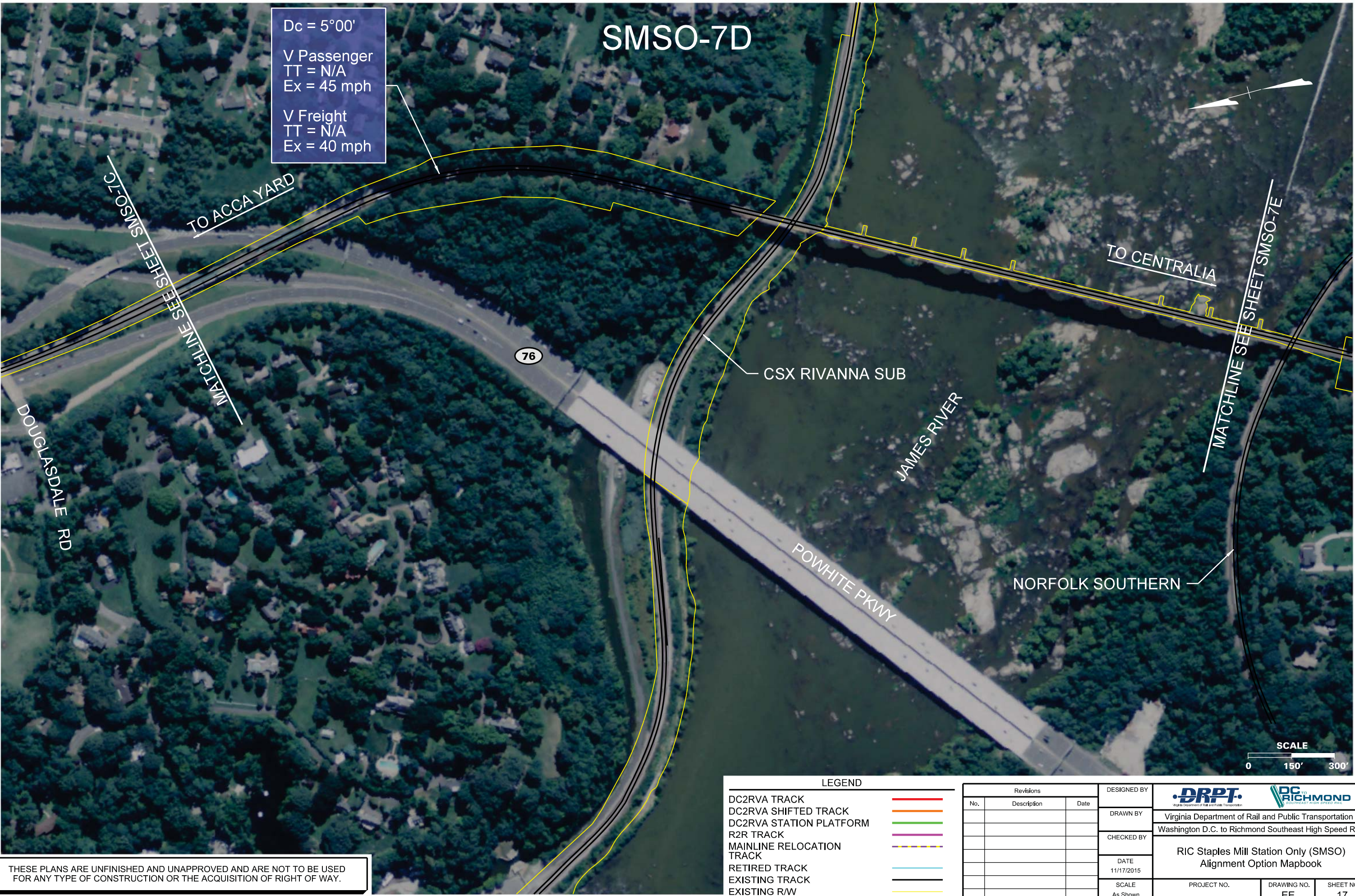
THESE PLANS ARE UNFINISHED AND UNAPPROVED AND ARE NOT TO BE USED FOR ANY TYPE OF CONSTRUCTION OR THE ACQUISITION OF RIGHT OF WAY.

11/13/2015 4:52:25 PM
SMSO-07C.dgn

SMSO-7D

Dc = 5°00'
V Passenger
TT = N/A
Ex = 45 mph

V Freight
TT = N/A
Ex = 40 mph



THESE PLANS ARE UNFINISHED AND UNAPPROVED AND ARE NOT TO BE USED FOR ANY TYPE OF CONSTRUCTION OR THE ACQUISITION OF RIGHT OF WAY.

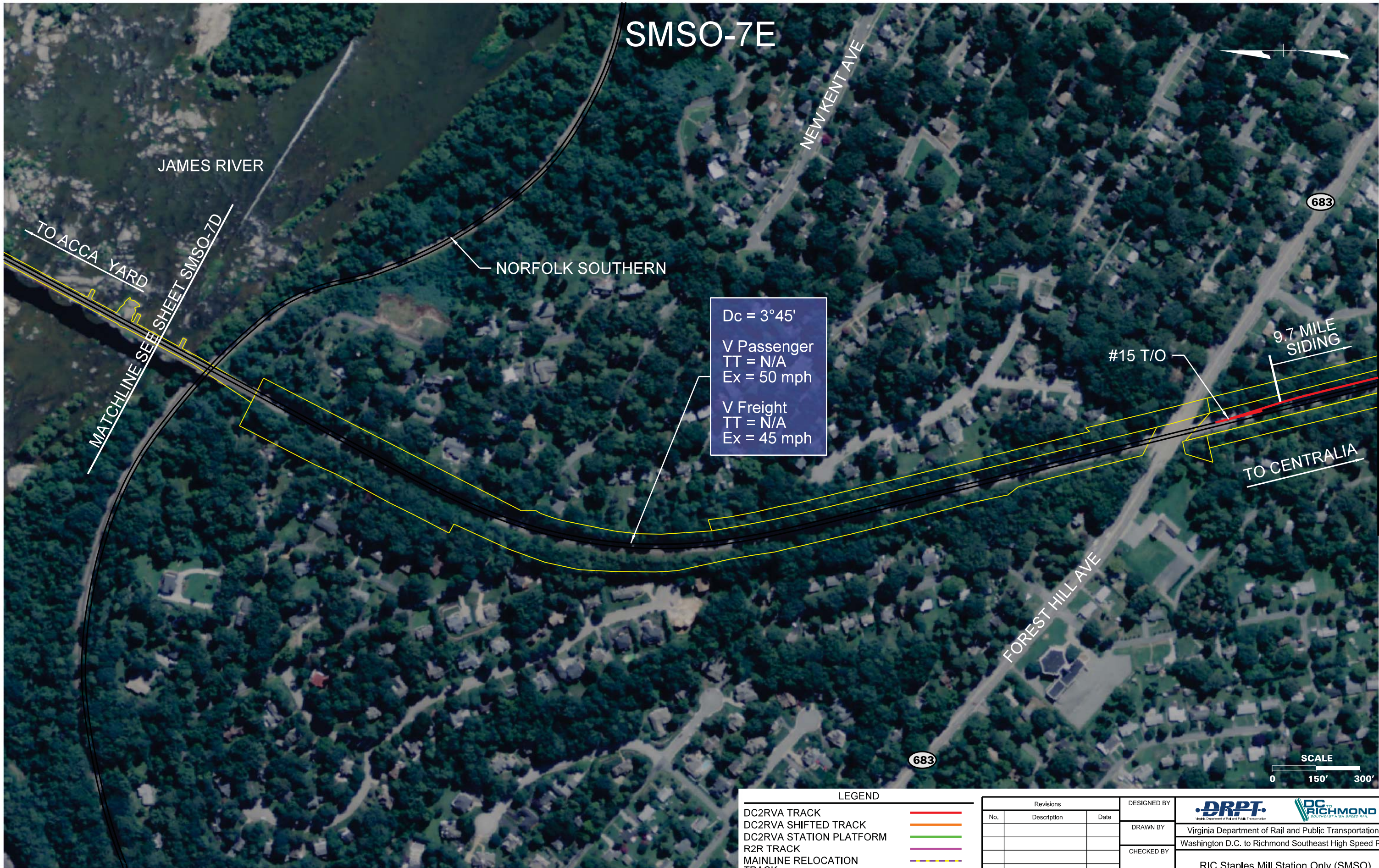
LEGEND

DC2RVA TRACK	
DC2RVA SHIFTED TRACK	
DC2RVA STATION PLATFORM	
R2R TRACK	
MAINLINE RELOCATION TRACK	
RETIRED TRACK	
EXISTING TRACK	
EXISTING RW	

Revisions		
No.	Description	Date

DESIGNED BY	 Virginia Department of Rail and Public Transportation Washington D.C. to Richmond Southeast High Speed Rail
DRAWN BY	
CHECKED BY	
DATE	11/17/2015
SCALE	As Shown

 Virginia Department of Rail and Public Transportation Washington D.C. to Richmond Southeast High Speed Rail	RIC Staples Mill Station Only (SMSO) Alignment Option Mapbook		
	PROJECT NO.	DRAWING NO. EE	SHEET NO. 17



THESE PLANS ARE UNFINISHED AND UNAPPROVED AND ARE NOT TO BE USED FOR ANY TYPE OF CONSTRUCTION OR THE ACQUISITION OF RIGHT OF WAY.

LEGEND	
DC2RVA TRACK	<div></div>
DC2RVA SHIFTED TRACK	<div></div>
DC2RVA STATION PLATFORM	<div></div>
R2R TRACK	<div></div>
MAINLINE RELOCATION TRACK	<div></div>
RETIRED TRACK	<div></div>
EXISTING TRACK	<div></div>
EXISTING R/W	<div></div>

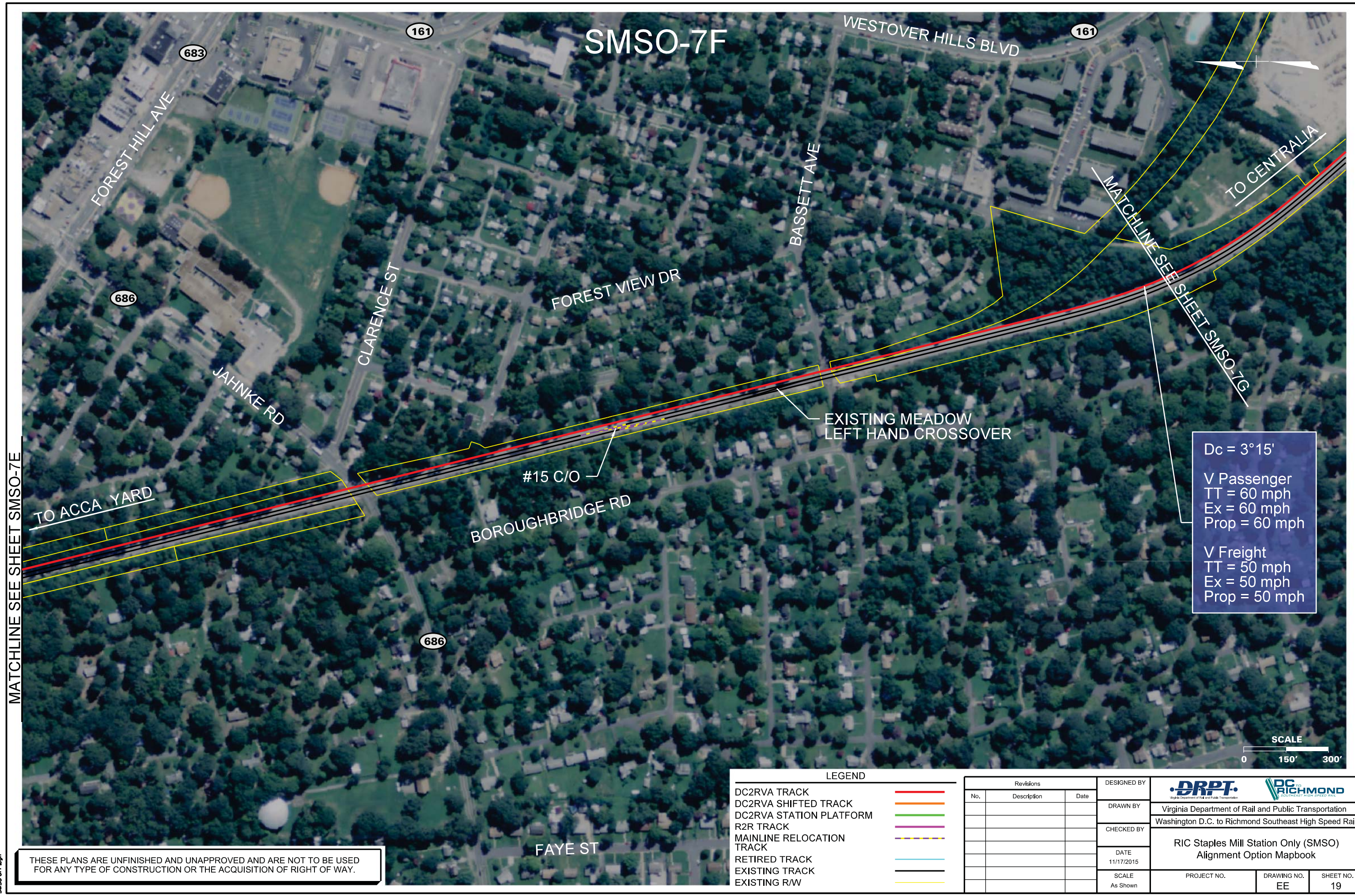
Revisions		
No.	Description	Date

DESIGNED BY
DRAWN BY
CHECKED BY
DATE 11/17/2015
SCALE As Shown

<div><div>DRPT</div><div>Virginia Department of Rail and Public Transportation</div></div> <div><div>DC RICHMOND</div><div>Richmond Southeast High Speed Rail</div></div>		
Virginia Department of Rail and Public Transportation Washington D.C. to Richmond Southeast High Speed Rail		
RIC Staples Mill Station Only (SMSO) Alignment Option Mapbook		
PROJECT NO.	DRAWING NO. EE	SHEET NO. 18

11/13/2015 4:53:37 PM
Plotted by: cpowell
SMSO-7E.dgn

SMSO-7F



MATCHLINE SEE SHEET SMSO-7E



Dc = 3°15'
V Passenger
TT = 60 mph
Ex = 60 mph
Prop = 60 mph

V Freight
TT = 50 mph
Ex = 50 mph
Prop = 50 mph

SCALE
0 150' 300'

LEGEND	
DC2RVA TRACK	—
DC2RVA SHIFTED TRACK	—
DC2RVA STATION PLATFORM	—
R2R TRACK	—
MAINLINE RELOCATION TRACK	—
RETIRED TRACK	—
EXISTING TRACK	—
EXISTING R/W	—

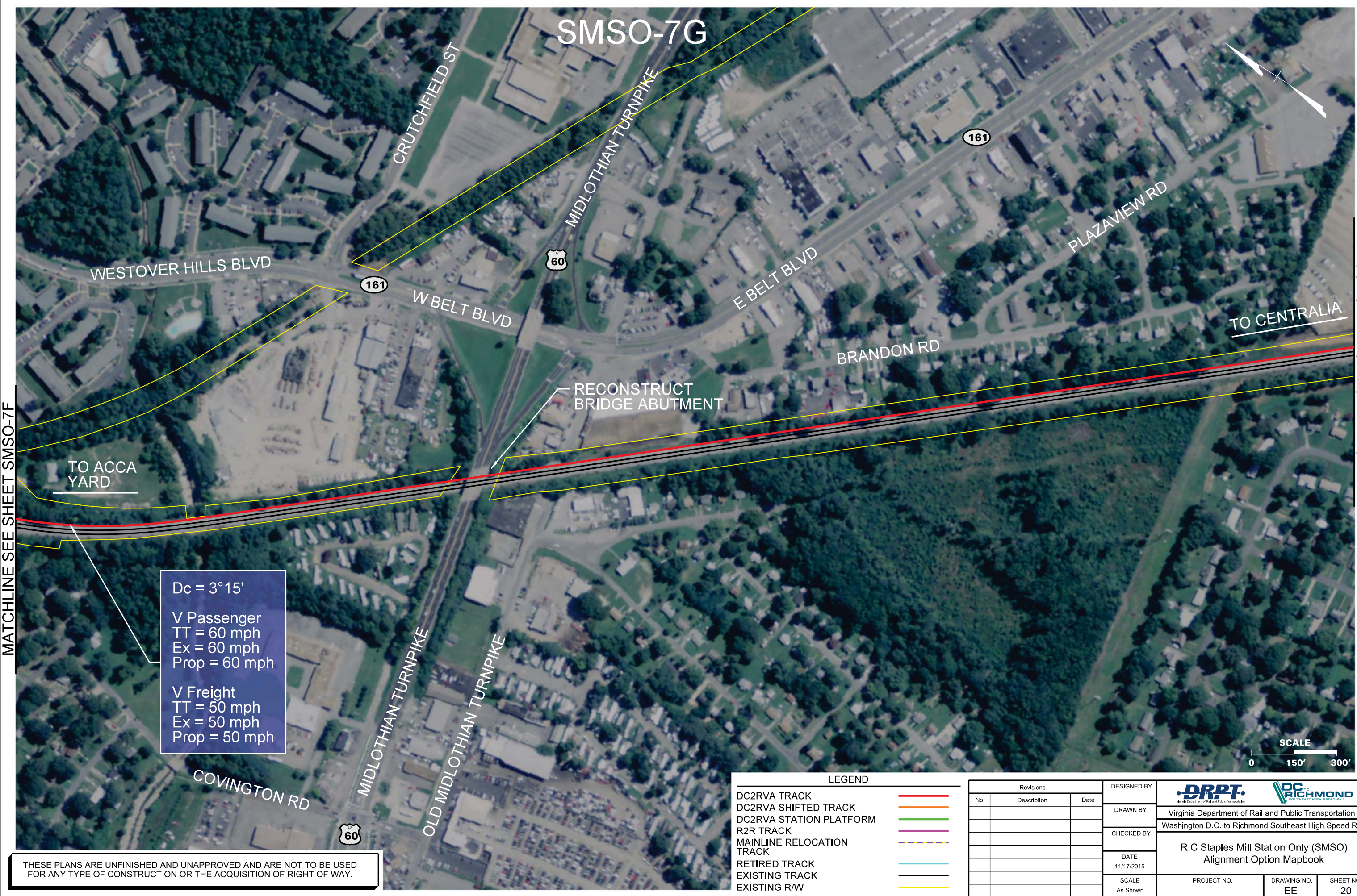
Revisions		
No.	Description	Date

DESIGNED BY	 		
DRAWN BY	Virginia Department of Rail and Public Transportation		
CHECKED BY	Washington D.C. to Richmond Southeast High Speed Rail		
DATE	11/17/2015		
SCALE	As Shown		
PROJECT NO.	DRAWING NO.	SHEET NO.	
	EE	19	

THESE PLANS ARE UNFINISHED AND UNAPPROVED AND ARE NOT TO BE USED FOR ANY TYPE OF CONSTRUCTION OR THE ACQUISITION OF RIGHT OF WAY.

11/13/2015 4:54:42 PM
Plotted by: cpowell
SMSO-07F.dgn

SMSO-7G



MATCHLINE SEE SHEET SMSO-7F

MATCHLINE SEE SHEET SMSO-7H

Dc = 3°15'



V Passenger
TT = 60 mph
Ex = 60 mph
Prop = 60 mph

V Freight
TT = 50 mph
Ex = 50 mph
Prop = 50 mph

THESE PLANS ARE UNFINISHED AND UNAPPROVED AND ARE NOT TO BE USED FOR ANY TYPE OF CONSTRUCTION OR THE ACQUISITION OF RIGHT OF WAY.

Revisions		
No.	Description	Date

DESIGNED BY		
DRAWN BY		
CHECKED BY		
DATE		
SCALE		



Virginia Department of Rail and Public Transportation

Washington D.C. to Richmond Southeast High Speed Rail

RIC Staples Mill Station Only (SMSO)

Alignment Option Mapbook

PROJECT NO.	DRAWING NO.	SHEET NO.
	EE	20

SMSO-7H



MATCHLINE SEE SHEET SMSO-7G

MATCHLINE SEE SHEET SMSO-7I

THESE PLANS ARE UNFINISHED AND UNAPPROVED AND ARE NOT TO BE USED FOR ANY TYPE OF CONSTRUCTION OR THE ACQUISITION OF RIGHT OF WAY.

LEGEND

DC2RVA TRACK

DC2RVA SHIFTED TRACK

DC2RVA STATION PLATFORM

R2R TRACK

MAINLINE RELOCATION TRACK

RETIRED TRACK

EXISTING TRACK

EXISTING R/W

Revisions

No.

Description

Date

DESIGNED BY

DRAWN BY

CHECKED BY

DATE

SCALE

11/17/2015

As Shown

DRPT

Virginia Department of Rail and Public Transportation

RIC

Richmond

SEATTLE

Washington D.C. to Richmond Southeast High Speed Rail

RIC Staples Mill Station Only (SMSO)

Alignment Option Mapbook

PROJECT NO.

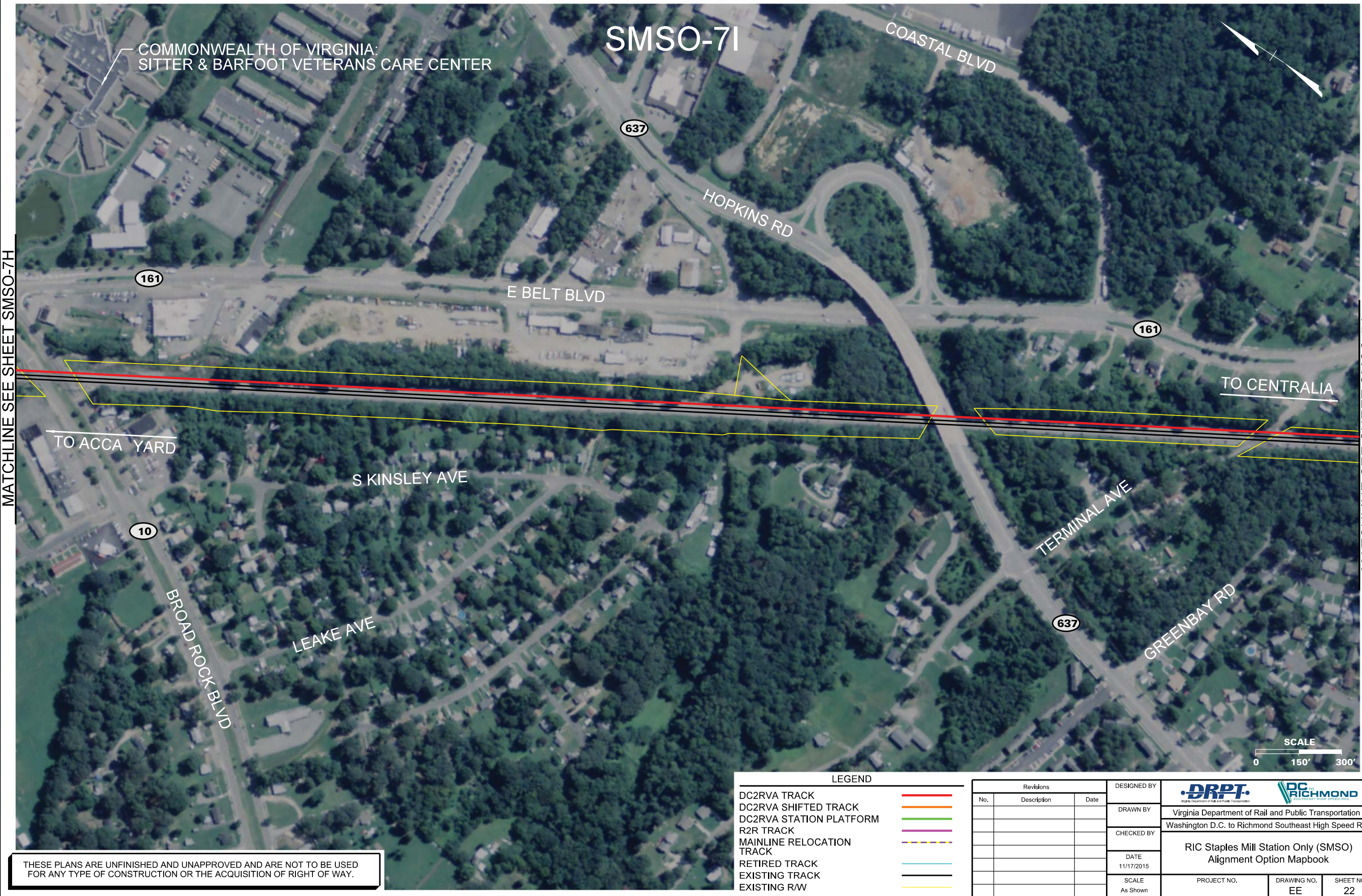
DRAWING NO.

SHEET NO.

EE

21

11/13/2015 4:55:56 PM
Plotted by: cpowell
SMSO-07H.dgn



MATCHLINE SEE SHEET SMO-7H

MATCHLINE SEE SHEET SMO-7J

SMO-7I

COMMONWEALTH OF VIRGINIA:
SITTER & BARFOOT VETERANS CARE CENTER

COASTAL BLVD

637

HOPKINS RD

161

E BELT BLVD

161

TO CENTRALIA

TO ACCA YARD

S KINSLEY AVE

10

BROAD ROCK BLVD

LEAKE AVE

TERMINAL AVE

637

GREENBAY RD



SCALE
0 150' 300'

LEGEND

- DC2RVA TRACK
- DC2RVA SHIFTED TRACK
- DC2RVA STATION PLATFORM
- R2R TRACK
- MAINLINE RELOCATION TRACK
- RETIRED TRACK
- EXISTING TRACK
- EXISTING RW

Revisions		
No.	Description	Date

DESIGNED BY
DRAWN BY
CHECKED BY
DATE 11/17/2015
SCALE As Shown



Virginia Department of Rail and Public Transportation

Washington D.C. to Richmond Southeast High Speed Rail

RIC Staples Mill Station Only (SMO)
Alignment Option Mapbook

PROJECT NO.	DRAWING NO. EE	SHEET NO. 22
-------------	-------------------	-----------------

THESE PLANS ARE UNFINISHED AND UNAPPROVED AND ARE NOT TO BE USED FOR ANY TYPE OF CONSTRUCTION OR THE ACQUISITION OF RIGHT OF WAY.

SMSO-7J

TERMINAL AVE

161

E BELT BLVD

161

BELLS RD

TO CENTRALIA

TO ACCA YARD

PLATINUM RD

WARWICK RD

Dc = 0°15'
V Passenger
TT = N/A
Ex = N/A
Prop = 90 mph

V Freight
TT = N/A
Ex = N/A
Prop = 60 mph

Dc = 0°30'
V Passenger
TT = N/A
Ex = N/A
Prop = 90 mph

V Freight
TT = N/A
Ex = N/A
Prop = 60 mph

Dc = 0°15'
V Passenger
TT = N/A
Ex = N/A
Prop = 90 mph

V Freight
TT = N/A
Ex = N/A
Prop = 60 mph



MATCHLINE SEE SHEET SMSO-7I

MATCHLINE SEE SHEET SMSO-7K

LEGEND

DC2RVA TRACK	
DC2RVA SHIFTED TRACK	
DC2RVA STATION PLATFORM	
R2R TRACK	
MAINLINE RELOCATION TRACK	
RETIRED TRACK	
EXISTING TRACK	
EXISTING R/W	

Revisions		
No.	Description	Date

DESIGNED BY	 Virginia Department of Rail and Public Transportation Washington D.C. to Richmond Southeast High Speed Rail				
DRAWN BY					
CHECKED BY					
DATE 11/17/2015					
SCALE As Shown	PROJECT NO.			DRAWING NO. EE	SHEET NO. 23

THESE PLANS ARE UNFINISHED AND UNAPPROVED AND ARE NOT TO BE USED FOR ANY TYPE OF CONSTRUCTION OR THE ACQUISITION OF RIGHT OF WAY.



MATCHLINE SEE SHEET SMSO-7J

MATCHLINE SEE SHEET SMSO-7L

Dc = 3°15'

V Passenger
TT = 50 mph
Ex = 60 mph
Prop = 60 mph

V Freight
TT = 45 mph
Ex = 50 mph
Prop = 50 mph

LEGEND	
DC2RVA TRACK	
DC2RVA SHIFTED TRACK	
DC2RVA STATION PLATFORM	
R2R TRACK	
MAINLINE RELOCATION TRACK	
RETIRED TRACK	
EXISTING TRACK	
EXISTING R/W	

Revisions		
No.	Description	Date

DESIGNED BY
DRAWN BY
CHECKED BY
DATE 11/17/2015
SCALE As Shown

 Virginia Department of Rail and Public Transportation		
Washington D.C. to Richmond Southeast High Speed Rail		
RIC Staples Mill Station Only (SMSO) Alignment Option Mapbook		
PROJECT NO.	DRAWING NO. EE	SHEET NO. 24

THESE PLANS ARE UNFINISHED AND UNAPPROVED AND ARE NOT TO BE USED FOR ANY TYPE OF CONSTRUCTION OR THE ACQUISITION OF RIGHT OF WAY.

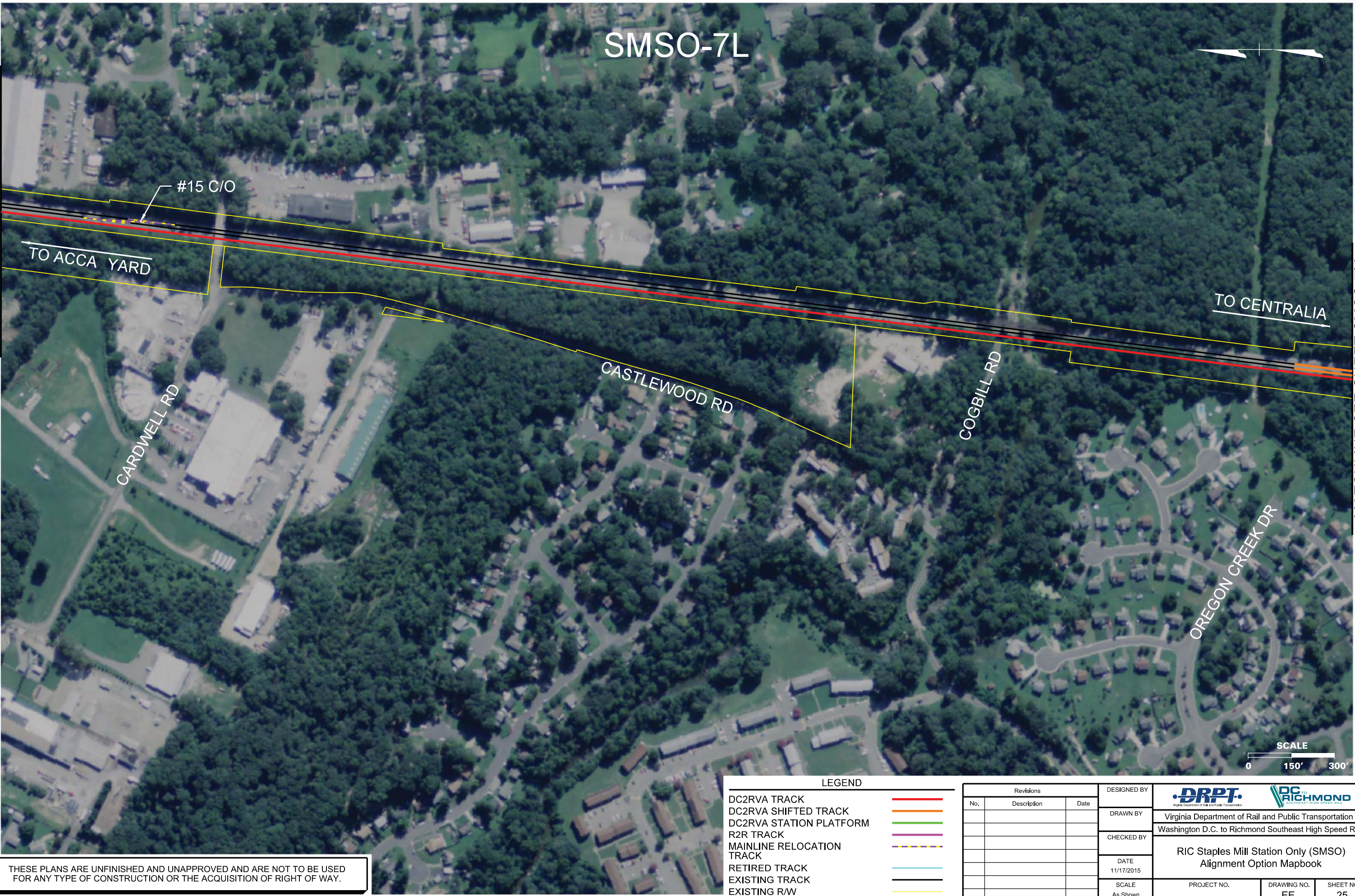
11/13/2015 4:46:05 PM
Plotted by: cpowell
SMSO-07K.dgn

SMSO-7L



MATCHLINE SEE SHEET SMSO-7K

MATCHLINE SEE SHEET SMSO-7M



THESE PLANS ARE UNFINISHED AND UNAPPROVED AND ARE NOT TO BE USED FOR ANY TYPE OF CONSTRUCTION OR THE ACQUISITION OF RIGHT OF WAY.

LEGEND

- DC2RVA TRACK
- DC2RVA SHIFTED TRACK
- DC2RVA STATION PLATFORM
- R2R TRACK
- MAINLINE RELOCATION TRACK
- RETIRED TRACK
- EXISTING TRACK
- EXISTING R/W

Revisions		
No.	Description	Date



DESIGNED BY

DRAWN BY

CHECKED BY

DATE
11/17/2015

SCALE
As Shown


Virginia Department of Rail and Public Transportation
Washington D.C. to Richmond Southeast High Speed Rail

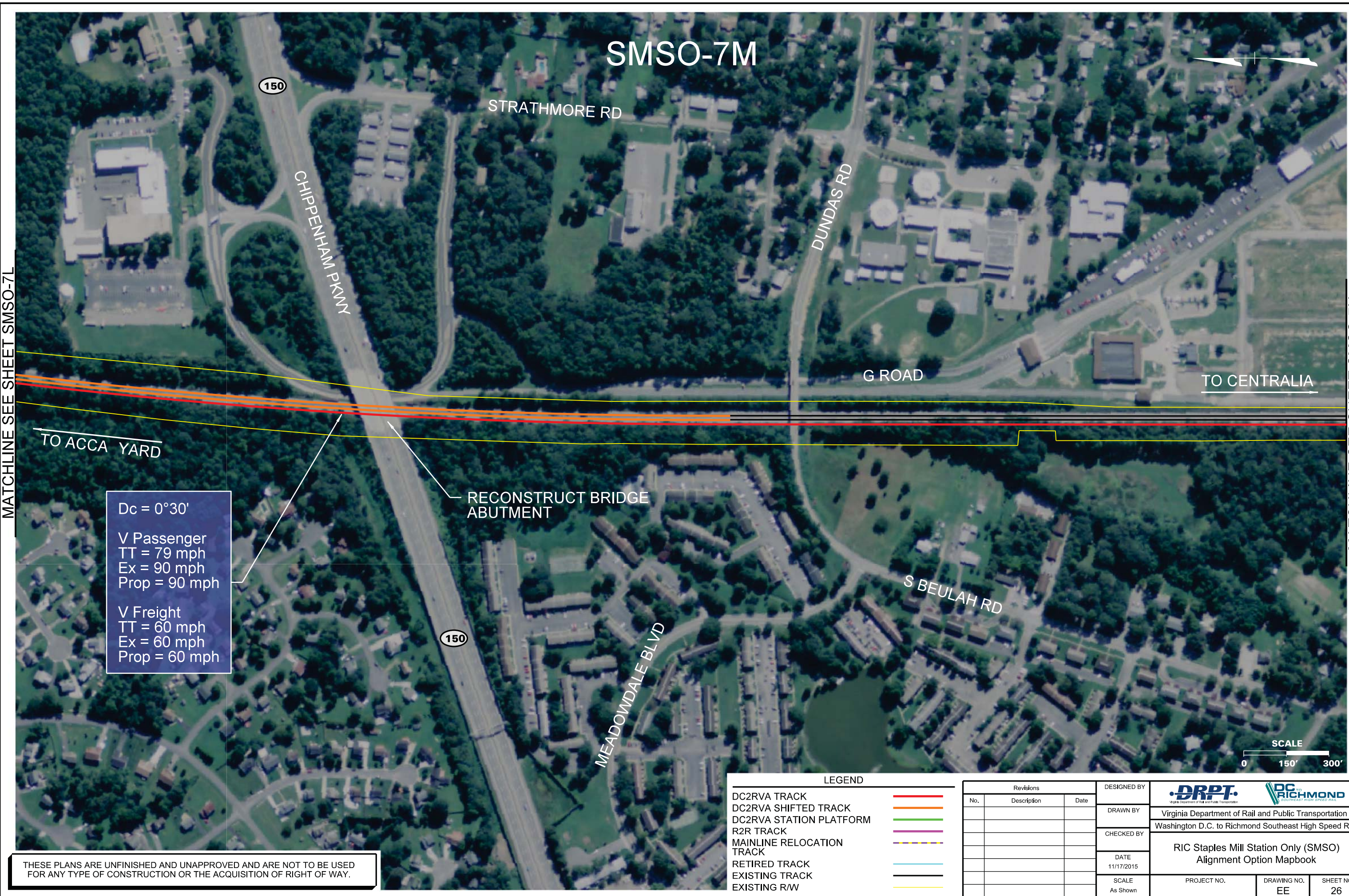
RIC Staples Mill Station Only (SMSO)
Alignment Option Mapbook

PROJECT NO.

DRAWING NO.
EE

SHEET NO.
25

11/13/2015 4:46:22 PM
Plotted by: cpowell
SMSO-07L.dgn



MATCHLINE SEE SHEET SMSO-7L

MATCHLINE SEE SHEET SMSO-7N

THESE PLANS ARE UNFINISHED AND UNAPPROVED AND ARE NOT TO BE USED FOR ANY TYPE OF CONSTRUCTION OR THE ACQUISITION OF RIGHT OF WAY.

Dc = 0°30'
V Passenger
TT = 79 mph
Ex = 90 mph
Prop = 90 mph

V Freight
TT = 60 mph
Ex = 60 mph
Prop = 60 mph

RECONSTRUCT BRIDGE ABUTMENT

LEGEND	
DC2RVA TRACK	<div></div>
DC2RVA SHIFTED TRACK	<div></div>
DC2RVA STATION PLATFORM	<div></div>
R2R TRACK	<div></div>
MAINLINE RELOCATION TRACK	<div></div>
RETIRED TRACK	<div></div>
EXISTING TRACK	<div></div>
EXISTING R/W	<div></div>

Revisions		
No.	Description	Date

DESIGNED BY
DRAWN BY
CHECKED BY
DATE 11/17/2015
SCALE As Shown

Virginia Department of Rail and Public Transportation

Richmond
Southeast High Speed Rail

Washington D.C. to Richmond Southeast High Speed Rail

RIC Staples Mill Station Only (SMO)

Alignment Option Mapbook

PROJECT NO.	DRAWING NO. EE	SHEET NO. 26
-------------	-------------------	-----------------

11/13/2015 4:46:23 PM
Plotted by: cpowell
SMSO-07M.dgn

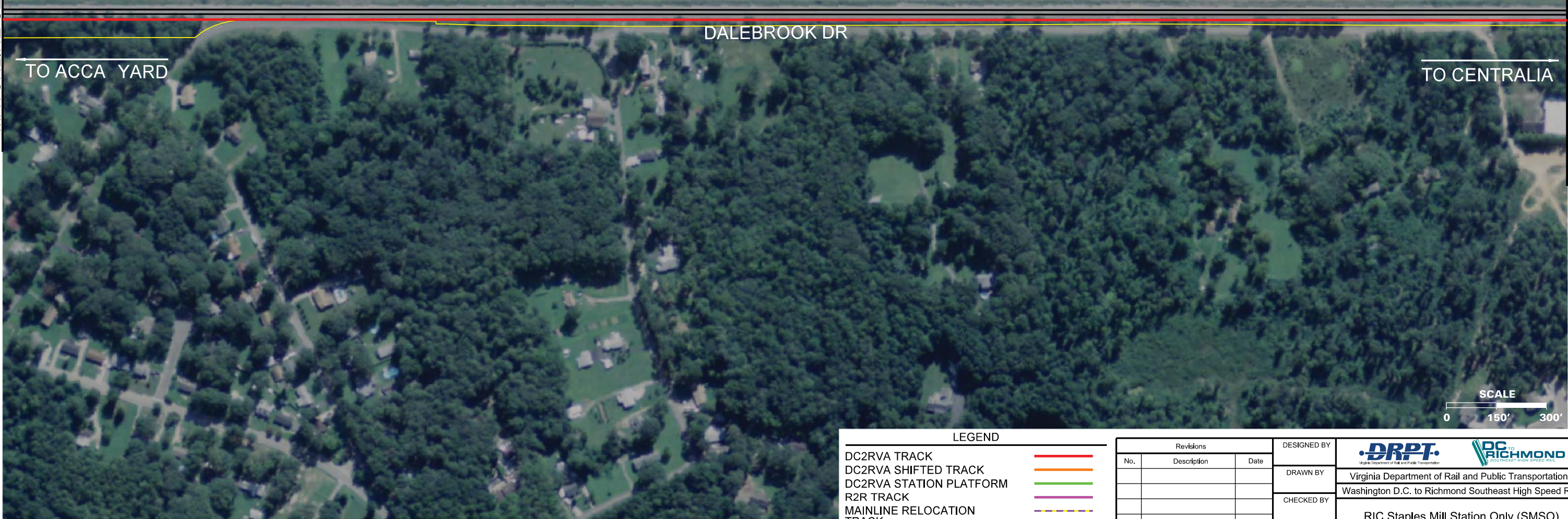


SMO-7N

G ROAD

MATCHLINE SEE SHEET SMO-7M

MATCHLINE SEE SHEET SMO-7O



DALEBROOK DR

TO ACCA YARD

TO CENTRALIA





THESE PLANS ARE UNFINISHED AND UNAPPROVED AND ARE NOT TO BE USED FOR ANY TYPE OF CONSTRUCTION OR THE ACQUISITION OF RIGHT OF WAY.

LEGEND

- DC2RVA TRACK
- DC2RVA SHIFTED TRACK
- DC2RVA STATION PLATFORM
- R2R TRACK
- MAINLINE RELOCATION TRACK
- RETIRED TRACK
- EXISTING TRACK
- EXISTING R/W

Revisions		
No.	Description	Date

DESIGNED BY
DRAWN BY
CHECKED BY
DATE 11/17/2015
SCALE As Shown



Virginia Department of Rail and Public Transportation

Virginia Department of Rail and Public Transportation

Washington D.C. to Richmond Southeast High Speed Rail

RIC Staples Mill Station Only (SMO)

Alignment Option Mapbook

PROJECT NO.	DRAWING NO.	SHEET NO.
	EE	27

SMSO-70



MATCHLINE SEE SHEET SMSO-7N

TO ACCA YARD

TO CENTRALIA





LEGEND

- DC2RVA TRACK
- DC2RVA SHIFTED TRACK
- DC2RVA STATION PLATFORM
- R2R TRACK
- MAINLINE RELOCATION TRACK
- RETIRED TRACK
- EXISTING TRACK
- EXISTING R/W

Revisions		
No.	Description	Date

DESIGNED BY
DRAWN BY
CHECKED BY
DATE 11/17/2015
SCALE As Shown



Virginia Department of Rail and Public Transportation

Virginia Department of Rail and Public Transportation

Washington D.C. to Richmond Southeast High Speed Rail

RIC Staples Mill Station Only (SMSO)

Alignment Option Mapbook

PROJECT NO.	DRAWING NO. EE	SHEET NO. 28
-------------	-------------------	-----------------

THESE PLANS ARE UNFINISHED AND UNAPPROVED AND ARE NOT TO BE USED FOR ANY TYPE OF CONSTRUCTION OR THE ACQUISITION OF RIGHT OF WAY.

MATCHLINE SEE SHEET SMSO-7P

SMSO-7P



FIRETHORNE LN

THURSTON RD

TO CENTRALIA

TO ACCA YARD

KINGSLAND RD

EVERLAKE RD

HOPKINS RD





LEGEND

- DC2RVA TRACK
- DC2RVA SHIFTED TRACK
- DC2RVA STATION PLATFORM
- R2R TRACK
- MAINLINE RELOCATION TRACK
- RETIRED TRACK
- EXISTING TRACK
- EXISTING R/W

Revisions		
No.	Description	Date

DESIGNED BY
DRAWN BY
CHECKED BY
DATE 11/17/2015
SCALE As Shown



Virginia Department of Rail and Public Transportation

Washington D.C. to Richmond Southeast High Speed Rail

RIC Staples Mill Station Only (SMSO)

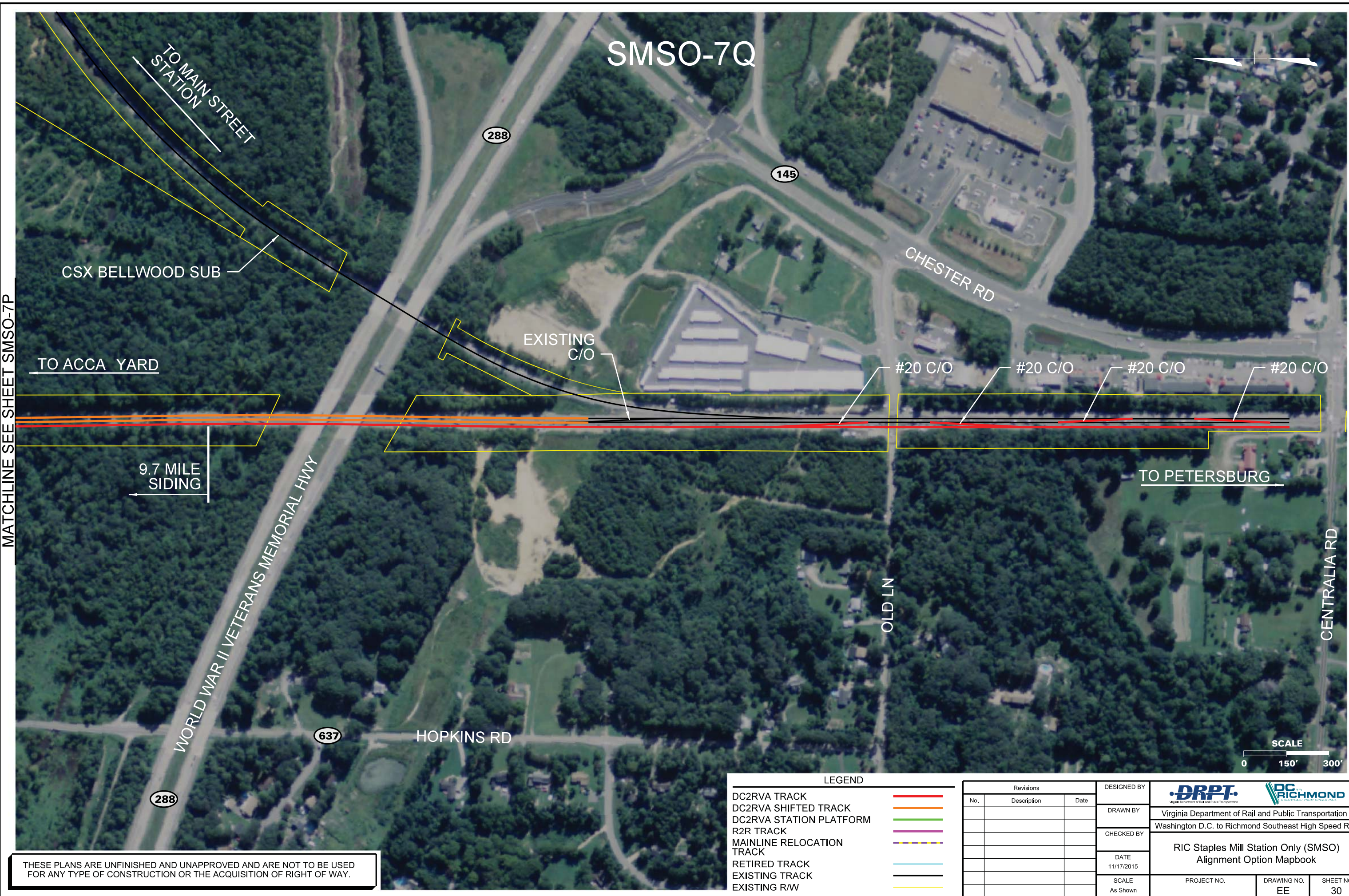
Alignment Option Mapbook

PROJECT NO.	DRAWING NO. EE	SHEET NO. 29
-------------	-------------------	-----------------

MATCHLINE SEE SHEET SMSO-7O

MATCHLINE SEE SHEET SMSO-7Q

THESE PLANS ARE UNFINISHED AND UNAPPROVED AND ARE NOT TO BE USED FOR ANY TYPE OF CONSTRUCTION OR THE ACQUISITION OF RIGHT OF WAY.



MATCHLINE SEE SHEET SMSO-7P

THESE PLANS ARE UNFINISHED AND UNAPPROVED AND ARE NOT TO BE USED FOR ANY TYPE OF CONSTRUCTION OR THE ACQUISITION OF RIGHT OF WAY.

LEGEND

DC2RVA TRACK

DC2RVA SHIFTED TRACK

DC2RVA STATION PLATFORM

R2R TRACK

MAINLINE RELOCATION TRACK

RETIRED TRACK

EXISTING TRACK

EXISTING R/W

Revisions		
No.	Description	Date

DESIGNED BY

DRAWN BY

CHECKED BY

DATE
11/17/2015

SCALE
As Shown

DRPT

Virginia Department of Rail and Public Transportation

RIC

Richmond

Richmond Southeast High Speed Rail

Virginia Department of Rail and Public Transportation

Washington D.C. to Richmond Southeast High Speed Rail

RIC Staples Mill Station Only (SMSO)

Alignment Option Mapbook

PROJECT NO.

DRAWING NO.
EE

SHEET NO.
30

11/13/2015 4:46:53 PM
Plotted by cpowell
SMSO-070.dgn