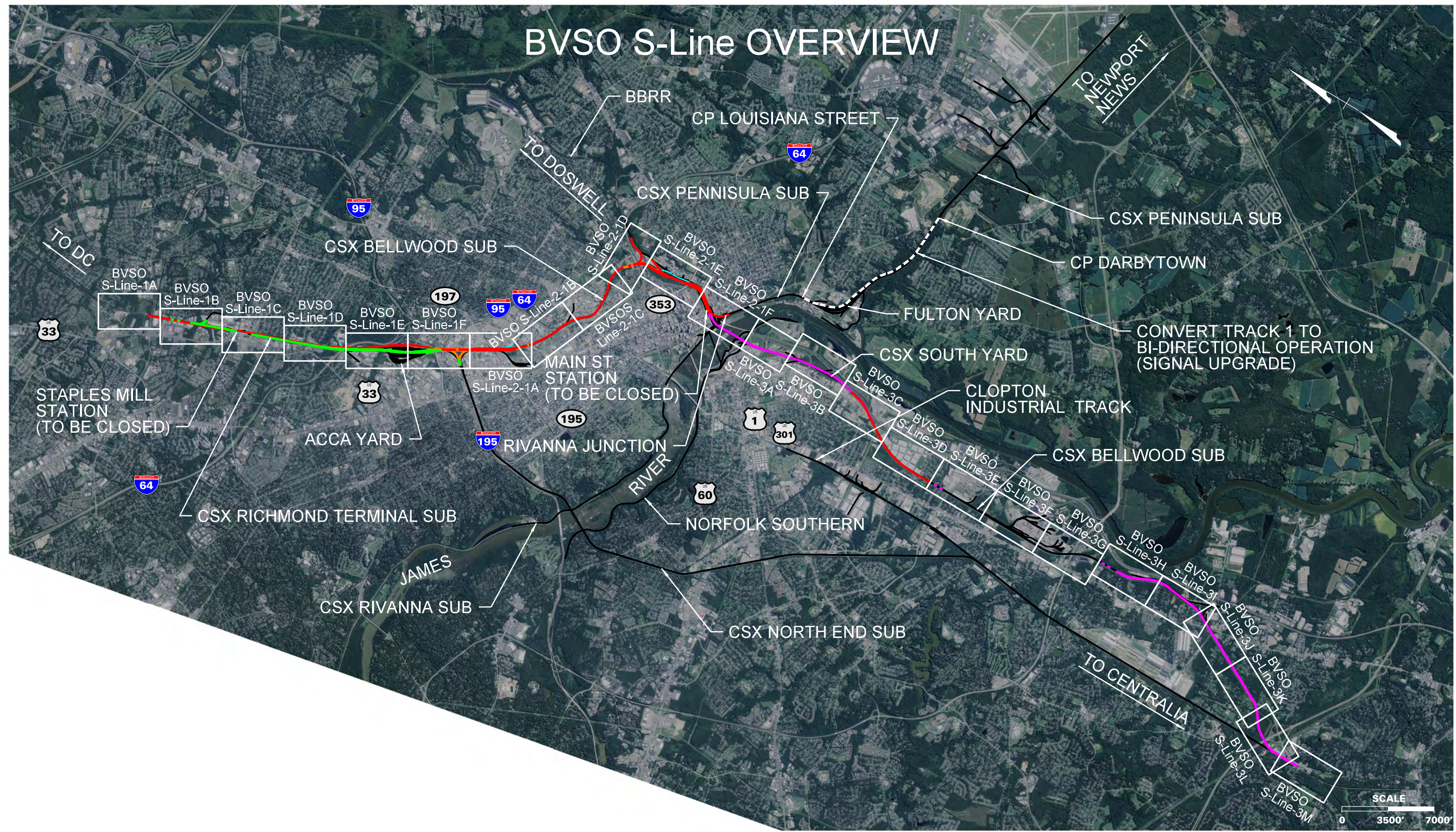


# BVSO S-Line OVERVIEW



THESE PLANS ARE UNFINISHED AND UNAPPROVED AND ARE NOT TO BE USED FOR ANY TYPE OF CONSTRUCTION OR THE ACQUISITION OF RIGHT OF WAY.

LEGEND

DC2RVA TRACK

DC2RVA SHIFTED TRACK

DC2RVA STATION PLATFORM

R2R TRACK

MAINLINE RELOCATION TRACK

RETIRED TRACK

EXISTING TRACK

EXISTING R/W

Revisions

No.	Description	Date

DESIGNED BY

DRAWN BY

CHECKED BY

DATE

SCALE

DRPT

Virginia Department of Rail and Public Transportation

DC RICHMOND

GOVERNMENT OF THE COMMONWEALTH OF VIRGINIA

Washington D.C. to Richmond Southeast High Speed Rail

RIC Boulevard Station Only - S-Line

(BVSO S-Line)

Alignment Option Mapbook

PROJECT NO.

DRAWING NO.

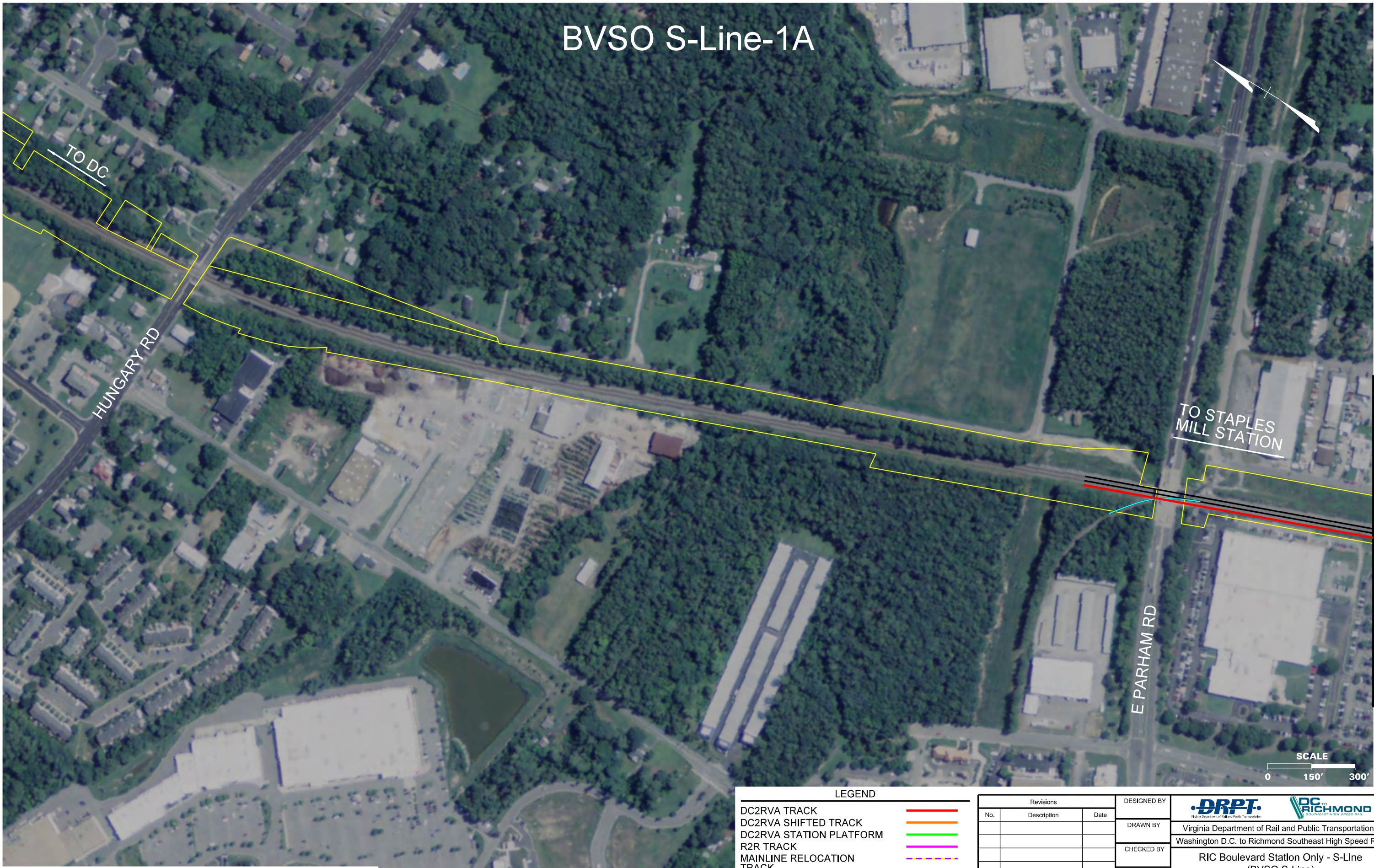
SHEET NO.

LL

1



BVSO S-Line-1A





THESE PLANS ARE UNFINISHED AND UNAPPROVED AND ARE NOT TO BE USED FOR ANY TYPE OF CONSTRUCTION OR THE ACQUISITION OF RIGHT OF WAY.

LEGEND		
DC2RVA TRACK		
DC2RVA SHIFTED TRACK		
DC2RVA STATION PLATFORM		
R2R TRACK		
MAINLINE RELOCATION TRACK		
RETIRED TRACK		
EXISTING TRACK		
EXISTING R/W		

Revisions		
No.	Description	Date

DESIGNED BY
DRAWN BY
CHECKED BY
DATE
SCALE



Virginia Department of Rail and Public Transportation

Washington D.C. to Richmond Southeast High Speed Rail

RIC Boulevard Station Only - S-Line  
(BVSO S-Line)  
Alignment Option Mapbook

PROJECT NO.	DRAWING NO.	SHEET NO.
	LL	2

11/13/2015 4:28:08 PM  
BVSO-S-01A.dgn

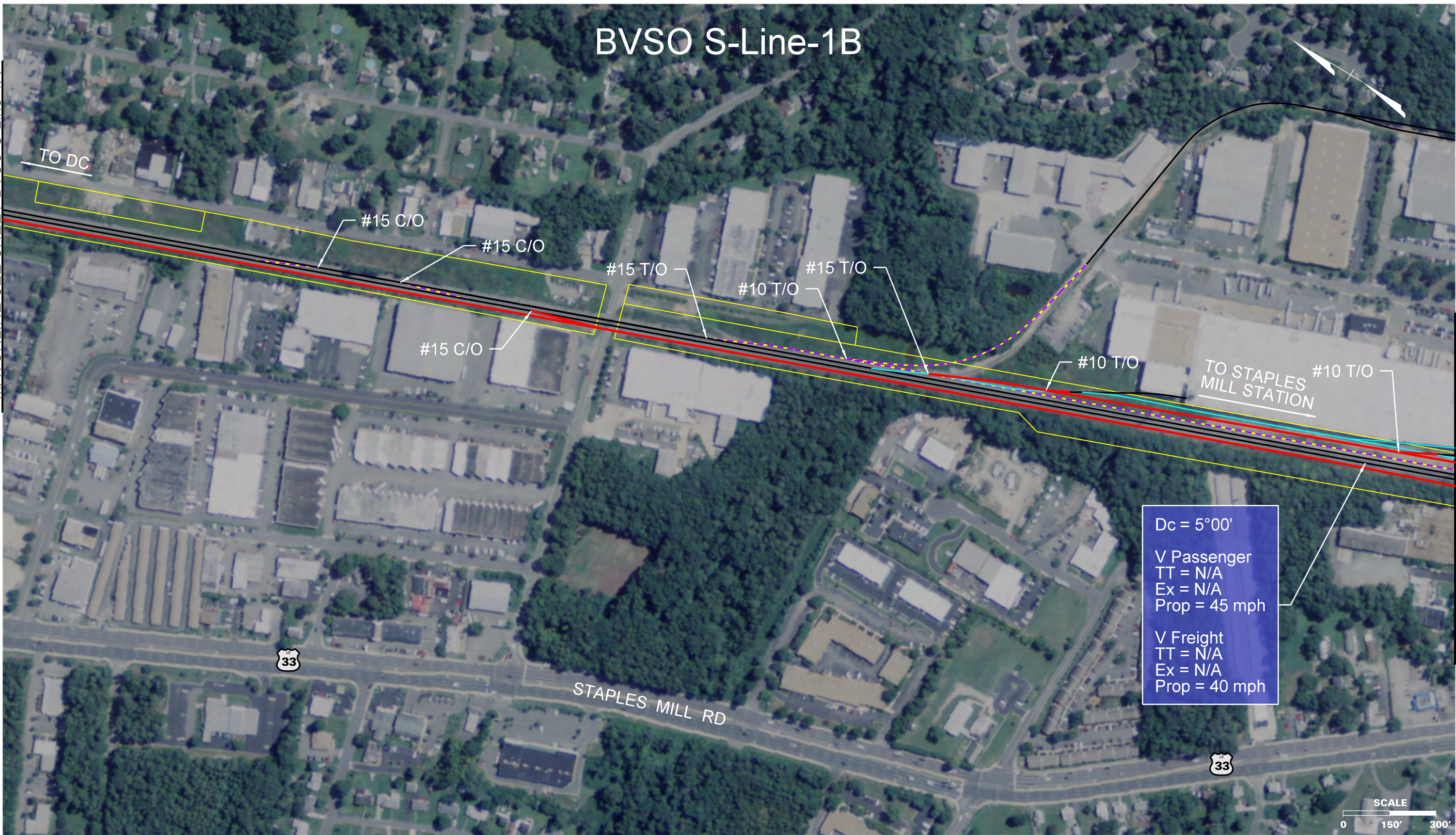
MATCHLINE SEE SHEET BVSO-S-1B



BVSO S-Line-1B

MATCHLINE SEE SHEET BVSO S-Line-1A

MATCHLINE SEE SHEET BVSO S-Line-1C



THESE PLANS ARE UNFINISHED AND UNAPPROVED AND ARE NOT TO BE USED FOR ANY TYPE OF CONSTRUCTION OR THE ACQUISITION OF RIGHT OF WAY.

LEGEND

DC2RVA TRACK	Red line
DC2RVA SHIFTED TRACK	Orange line
DC2RVA STATION PLATFORM	Green line
R2R TRACK	Purple line
MAINLINE RELOCATION TRACK	Yellow line
RETIRED TRACK	Blue line
EXISTING TRACK	Black line
EXISTING R/W	Yellow line

Revisions		
No.	Description	Date

DESIGNED BY	DRPT Virginia Department of Rail and Public Transportation
DRAWN BY	
CHECKED BY	
DATE	11/17/2015
SCALE	As Shown

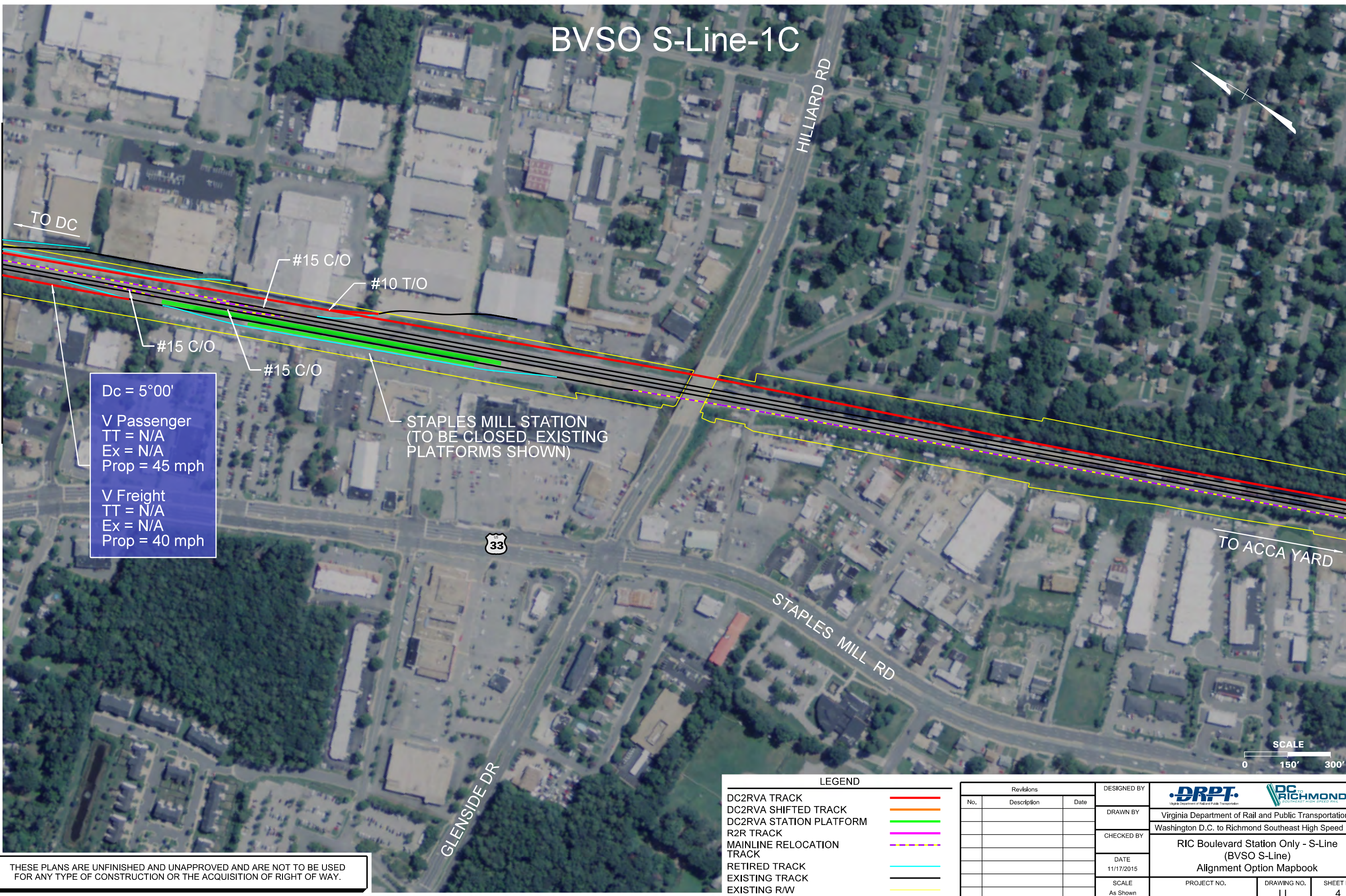
DRPT Virginia Department of Rail and Public Transportation		RIC Boulevard Station Only - S-Line (BVSO S-Line) Alignment Option Mapbook
Washington D.C. to Richmond Southeast High Speed Rail		
PROJECT NO.	DRAWING NO. LL	SHEET NO. 3



# BVSO S-Line-1C

MATCHLINE SEE SHEET BVSO S-Line-1B

MATCHLINE SEE SHEET BVSO S-Line-1D



Dc = 5°00'  
V Passenger  
TT = N/A  
Ex = N/A  
Prop = 45 mph  
  
V Freight  
TT = N/A  
Ex = N/A  
Prop = 40 mph



STAPLES MILL STATION  
(TO BE CLOSED, EXISTING  
PLATFORMS SHOWN)



LEGEND	
DC2RVA TRACK	<span style="color: red;">—</span>
DC2RVA SHIFTED TRACK	<span style="color: orange;">—</span>
DC2RVA STATION PLATFORM	<span style="color: green;">—</span>
R2R TRACK	<span style="color: purple;">—</span>
MAINLINE RELOCATION TRACK	<span style="color: yellow;">—</span>
RETIRED TRACK	<span style="color: cyan;">—</span>
EXISTING TRACK	<span style="color: black;">—</span>
EXISTING R/W	<span style="color: black;">—</span>

Revisions		
No.	Description	Date

DESIGNED BY
DRAWN BY
CHECKED BY
DATE 11/17/2015
SCALE As Shown

  Virginia Department of Rail and Public Transportation		
Washington D.C. to Richmond Southeast High Speed Rail		
RIC Boulevard Station Only - S-Line (BVSO S-Line) Alignment Option Mapbook		
PROJECT NO.	DRAWING NO. LL	SHEET NO. 4

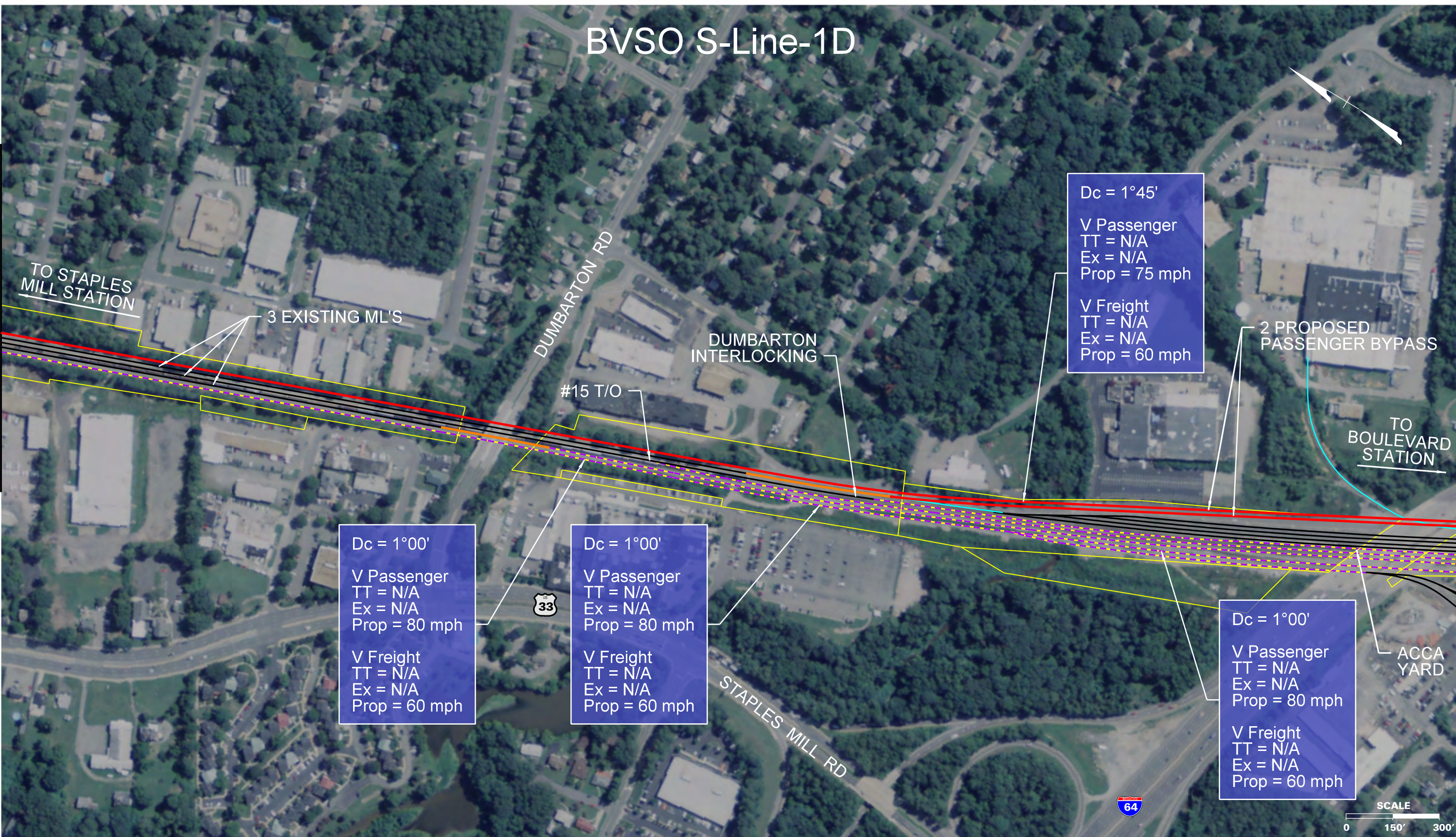
THESE PLANS ARE UNFINISHED AND UNAPPROVED AND ARE NOT TO BE USED FOR ANY TYPE OF CONSTRUCTION OR THE ACQUISITION OF RIGHT OF WAY.



# BVSO S-Line-1D

MATCHLINE SEE SHEET BVSO S-Line-1C

MATCHLINE SEE SHEET BVSO S-Line-1E



THESE PLANS ARE UNFINISHED AND UNAPPROVED AND ARE NOT TO BE USED FOR ANY TYPE OF CONSTRUCTION OR THE ACQUISITION OF RIGHT OF WAY.

## LEGEND

DC2RVA TRACK	Red line
DC2RVA SHIFTED TRACK	Orange line
DC2RVA STATION PLATFORM	Green line
R2R TRACK	Purple line
MAINLINE RELOCATION TRACK	Yellow dashed line
RETIRED TRACK	Cyan line
EXISTING TRACK	Black line
EXISTING R/W	Yellow line

Revisions		
No.	Description	Date

DESIGNED BY
DRAWN BY
CHECKED BY
DATE 11/17/2015
SCALE As Shown

<b>DRPT</b> Virginia Department of Rail and Public Transportation		
Washington D.C. to Richmond Southeast High Speed Rail		
RIC Boulevard Station Only - S-Line (BVSO S-Line) Alignment Option Mapbook		
PROJECT NO.	DRAWING NO. LL	SHEET NO. 5



BVSO-S-1E

Dc = 1°00'  
V Passenger  
TT = N/A  
Ex = N/A  
Prop = 80 mph  
  
V Freight  
TT = N/A  
Ex = N/A  
Prop = 60 mph

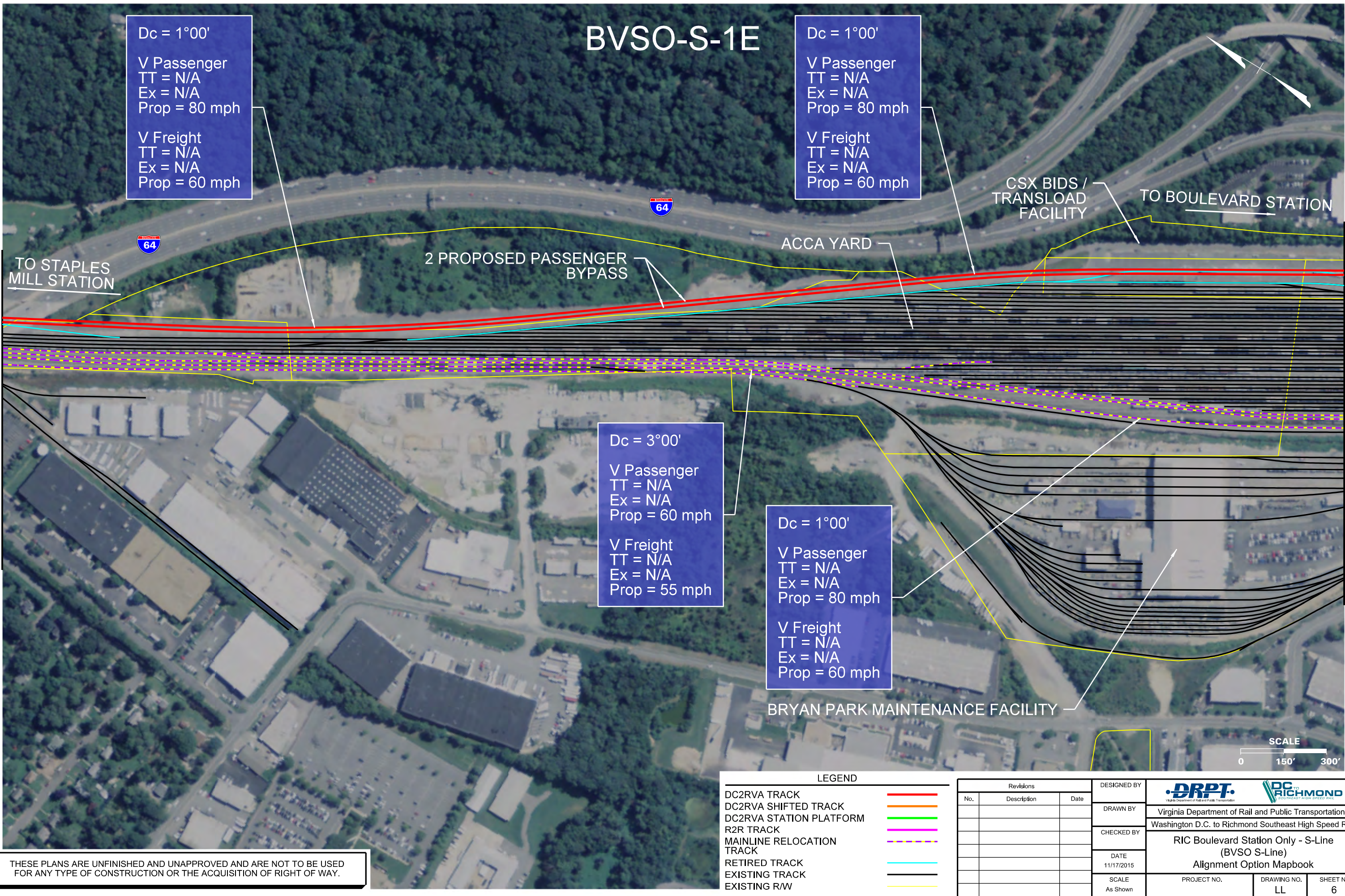
Dc = 1°00'  
V Passenger  
TT = N/A  
Ex = N/A  
Prop = 80 mph  
  
V Freight  
TT = N/A  
Ex = N/A  
Prop = 60 mph

Dc = 3°00'  
V Passenger  
TT = N/A  
Ex = N/A  
Prop = 60 mph  
  
V Freight  
TT = N/A  
Ex = N/A  
Prop = 55 mph

Dc = 1°00'  
V Passenger  
TT = N/A  
Ex = N/A  
Prop = 80 mph  
  
V Freight  
TT = N/A  
Ex = N/A  
Prop = 60 mph

MATCHLINE SEE SHEET BVSO-S-1D

MATCHLINE SEE SHEET BVSO-S-1F



THESE PLANS ARE UNFINISHED AND UNAPPROVED AND ARE NOT TO BE USED FOR ANY TYPE OF CONSTRUCTION OR THE ACQUISITION OF RIGHT OF WAY.



# BVSO S-Line-1F

MATCHLINE SEE SHEET BVSO S-Line-1E

MATCHLINE SEE SHEET BVSO S-Line-2-1A

Dc = 1°00'  
V Passenger  
TT = N/A  
Ex = N/A  
Prop = 80 mph  
  
V Freight  
TT = N/A  
Ex = N/A  
Prop = 60 mph

Dc = 1°00'  
V Passenger  
TT = N/A  
Ex = N/A  
Prop = 80 mph  
  
V Freight  
TT = N/A  
Ex = N/A  
Prop = 60 mph

Dc = 6°15'  
V Passenger  
TT = N/A  
Ex = N/A  
Prop = 30 mph  
  
V Freight  
TT = N/A  
Ex = N/A  
Prop = 30 mph

Dc = 5°00'  
V Passenger  
TT = N/A  
Ex = N/A  
Prop = 45 mph  
  
V Freight  
TT = N/A  
Ex = N/A  
Prop = 40 mph

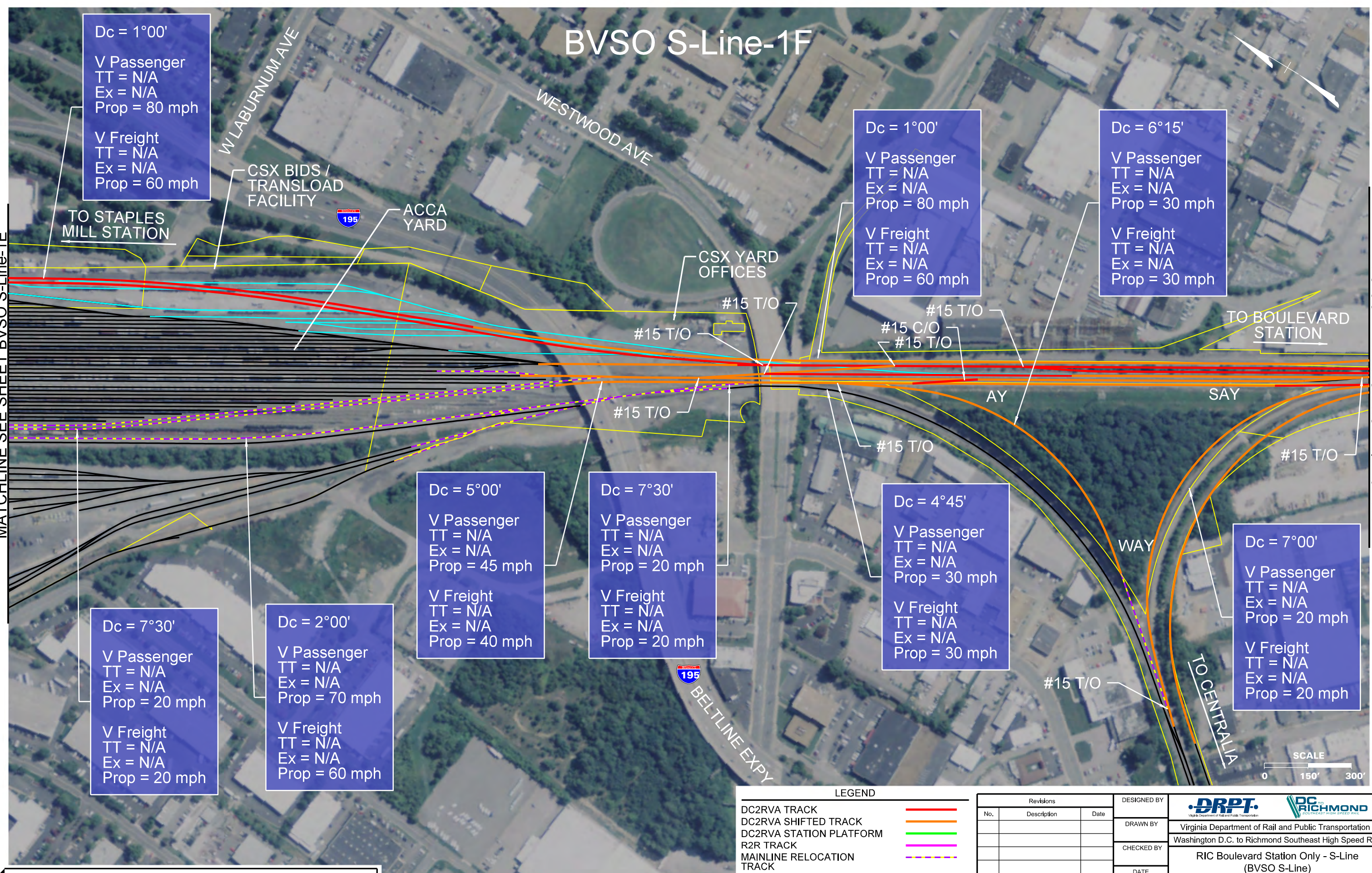
Dc = 7°30'  
V Passenger  
TT = N/A  
Ex = N/A  
Prop = 20 mph  
  
V Freight  
TT = N/A  
Ex = N/A  
Prop = 20 mph

Dc = 4°45'  
V Passenger  
TT = N/A  
Ex = N/A  
Prop = 30 mph  
  
V Freight  
TT = N/A  
Ex = N/A  
Prop = 30 mph

Dc = 7°00'  
V Passenger  
TT = N/A  
Ex = N/A  
Prop = 20 mph  
  
V Freight  
TT = N/A  
Ex = N/A  
Prop = 20 mph

Dc = 7°30'  
V Passenger  
TT = N/A  
Ex = N/A  
Prop = 20 mph  
  
V Freight  
TT = N/A  
Ex = N/A  
Prop = 20 mph

Dc = 2°00'  
V Passenger  
TT = N/A  
Ex = N/A  
Prop = 70 mph  
  
V Freight  
TT = N/A  
Ex = N/A  
Prop = 60 mph



THESE PLANS ARE UNFINISHED AND UNAPPROVED AND ARE NOT TO BE USED FOR ANY TYPE OF CONSTRUCTION OR THE ACQUISITION OF RIGHT OF WAY.

LEGEND

DC2RVA TRACK	Red line
DC2RVA SHIFTED TRACK	Orange line
DC2RVA STATION PLATFORM	Green line
R2R TRACK	Blue line
MAINLINE RELOCATION TRACK	Yellow dashed line
RETIRED TRACK	Cyan line
EXISTING TRACK	Black line
EXISTING R/W	Yellow line

Revisions		
No.	Description	Date

DESIGNED BY	DRPT Virginia Department of Rail and Public Transportation Washington D.C. to Richmond Southeast High Speed Rail
DRAWN BY	
CHECKED BY	
DATE	11/17/2015
SCALE	As Shown

PROJECT NO.	DRAWING NO.	SHEET NO.
	LL	7

11/13/2015 4:28:40 PM  
BVSO-S-01F.dgn



# BVSO S-Line-2-1A

MATCHLINE SEE SHEET BVSO S-Line-1F

HERMITAGE RD

MATCHLINE SEE SHEET BVSO S-Line-2-1B

TO MAIN ST STATION

#15 T/O

1200' LOW LEVEL PASSENGER PLATFORM

1200' LEVEL BOARDING PASSENGER PLATFORM

TO ACCA YARD

#15 T/O

#15 T/O

#15 C/O

#15 T/O

Dc = 1°35'  
V Passenger  
TT = N/A  
Ex = N/A  
Prop = 75 mph  
  
V Freight  
TT = N/A  
Ex = N/A  
Prop = N/A

W LEIGH ST

N BOULEVARD



LEGEND

DC2RVA TRACK	Red line
DC2RVA SHIFTED TRACK	Orange line
DC2RVA STATION PLATFORM	Green line
R2R TRACK	Purple line
MAINLINE RELOCATION TRACK	Light green line
RETIRED TRACK	Blue line
EXISTING TRACK	Black line
EXISTING R/W	Yellow line

Revisions		
No.	Description	Date

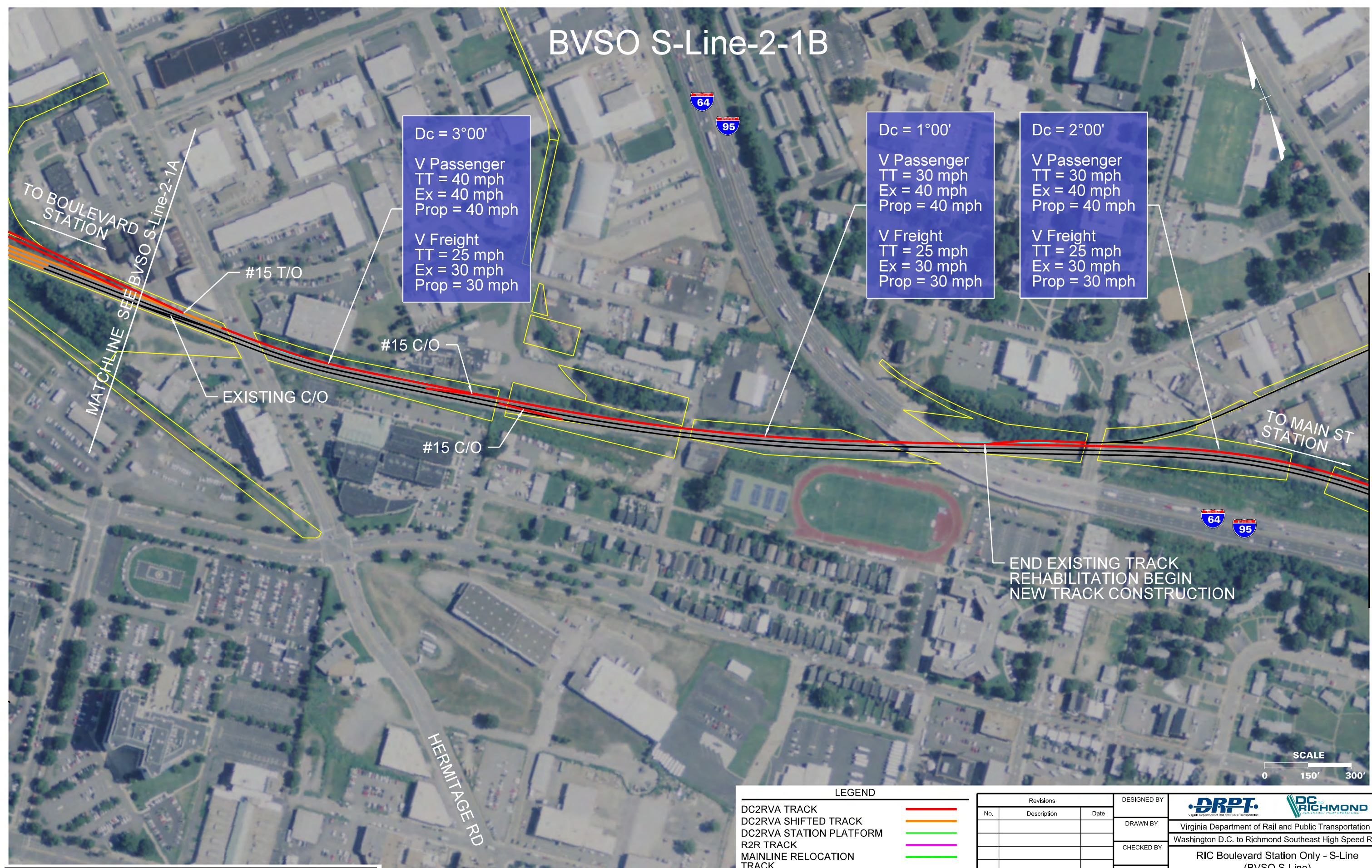
DESIGNED BY	 Virginia Department of Rail and Public Transportation	PROJECT NO.	DRAWING NO.	SHEET NO.
DRAWN BY				
CHECKED BY				
DATE	RIC Boulevard Station Only - S-Line (BVSO S-Line) Alignment Option Mapbook			
SCALE	As Shown			

THESE PLANS ARE UNFINISHED AND UNAPPROVED AND ARE NOT TO BE USED FOR ANY TYPE OF CONSTRUCTION OR THE ACQUISITION OF RIGHT OF WAY.

Printed by Jmaruad 11/30/2015 3:42:31 PM  
BVSO-S-02-1A.dgn



BVSO S-Line-2-1B



THESE PLANS ARE UNFINISHED AND UNAPPROVED AND ARE NOT TO BE USED FOR ANY TYPE OF CONSTRUCTION OR THE ACQUISITION OF RIGHT OF WAY.

LEGEND	
DC2RVA TRACK	<span style="color: red;">—</span>
DC2RVA SHIFTED TRACK	<span style="color: orange;">—</span>
DC2RVA STATION PLATFORM	<span style="color: green;">—</span>
R2R TRACK	<span style="color: magenta;">—</span>
MAINLINE RELOCATION TRACK	<span style="color: cyan;">—</span>
RETIRED TRACK	<span style="color: blue;">—</span>
EXISTING TRACK	<span style="color: black;">—</span>
EXISTING R/W	<span style="color: yellow;">—</span>

Revisions		
No.	Description	Date

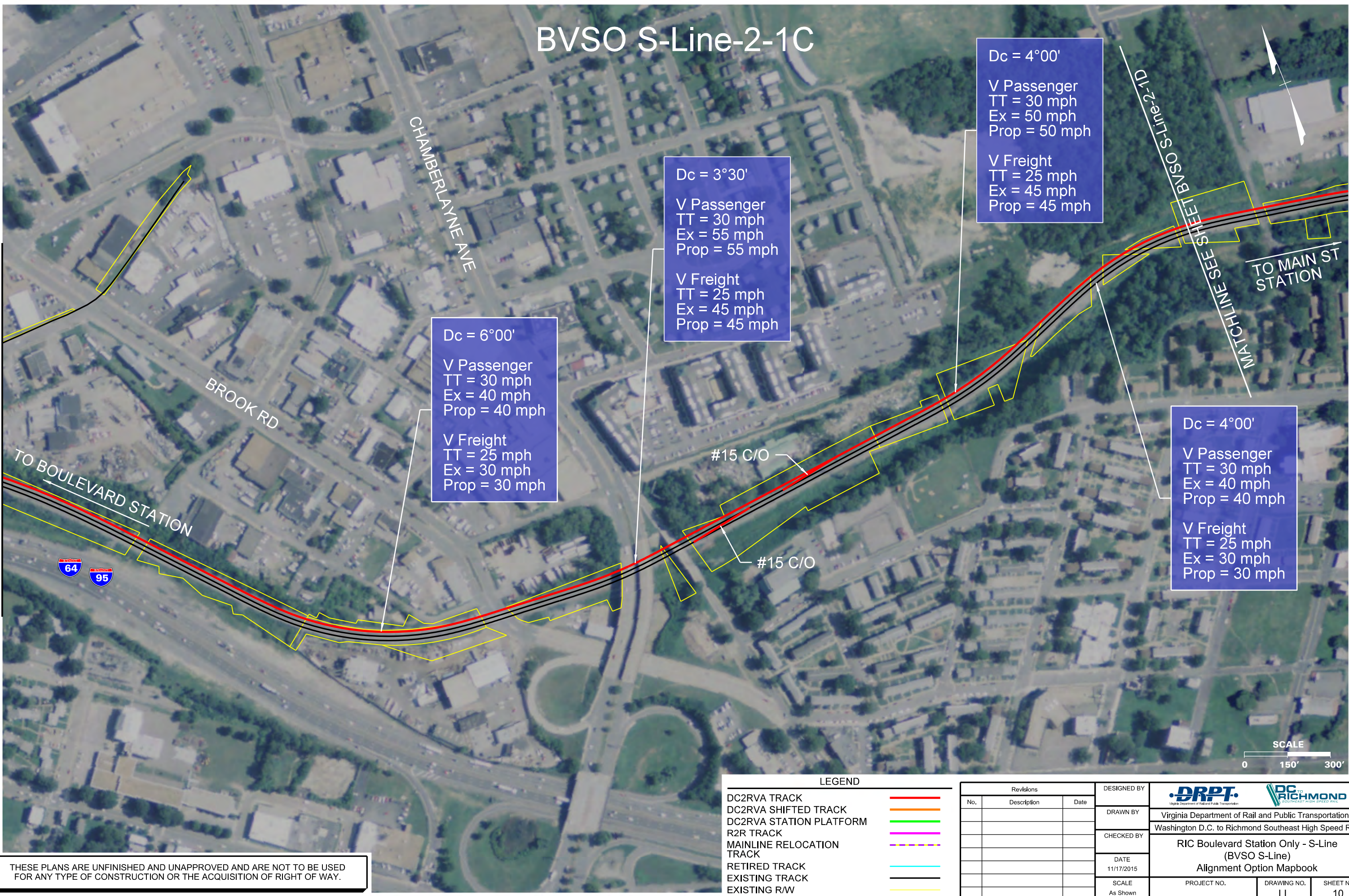
DESIGNED BY			
DRAWN BY	Virginia Department of Rail and Public Transportation		
CHECKED BY	Washington D.C. to Richmond Southeast High Speed Rail		
DATE	RIC Boulevard Station Only - S-Line (BVSO S-Line)		
SCALE	Alignment Option Mapbook		
As Shown	PROJECT NO.	DRAWING NO.	SHEET NO.
		LL	9

Printed by Jmaruad 11/30/2015 3:42:34 PM BVSO-S-02-1B.dgn



BVSO S-Line-2-1C

MATCHLINE SEE SHEET BVSO S-Line-2-1B



11/13/2015 4:29:00 PM  
BVSO-S-02-C.dgn

Revisions			DESIGNED BY		
No.	Description	Date	DRAWN BY		
			CHECKED BY		
			DATE		
			SCALE		
			As Shown		

DRPT Virginia Department of Rail and Public Transportation			RIC RICHMOND Richmond Department of Rail and Public Transportation		
Washington D.C. to Richmond Southeast High Speed Rail			RIC Boulevard Station Only - S-Line (BVSO S-Line) Alignment Option Mapbook		
PROJECT NO.		DRAWING NO.	SHEET NO.		
		LL	10		



# BVSO S-Line-2-1D

TO  
BOULEVARD  
STATION

MATCHLINE SEE SHEET BVSO S-Line-2-1C

N 1ST ST

N 5TH ST



SUBSTATION

TO MAIN ST  
STATION

HOSPITAL ST

MATCHLINE SEE SHEET BVSO S-Line-2-1E

N 7TH ST

Dc = 4°15'  
V Passenger  
TT = 20 mph  
Ex = 40 mph  
Prop = 40 mph  
V Freight  
TT = 20 mph  
Ex = 30 mph  
Prop = 30 mph

Dc = 10°00'  
V Passenger  
TT = N/A mph  
Ex = N/A mph  
Prop = 30 mph  
V Freight  
TT = N/A mph  
Ex = N/A mph  
Prop = 25 mph

#15 T/O

BBRR

Dc = 3°15'  
V Passenger  
TT = 25 mph  
Ex = 60 mph  
V Freight  
TT = 25 mph  
Ex = 50 mph

#15 C/O

#15 T/O

#15 C/O

#10 T/O

Dc = 8°00'  
V Passenger  
TT = 20 mph  
Ex = 35 mph  
Prop = 35 mph  
V Freight  
TT = 20 mph  
Ex = 30 mph  
Prop = 30 mph

Dc = 6°00'  
V Passenger  
TT = 35 mph  
Ex = 40 mph  
V Freight  
TT = 35 mph  
Ex = 35 mph

SCALE

0 150' 300'

## LEGEND

DC2RVA TRACK  
DC2RVA SHIFTED TRACK  
DC2RVA STATION PLATFORM  
R2R TRACK  
MAINLINE RELOCATION  
TRACK  
RETIRED TRACK  
EXISTING TRACK  
EXISTING R/W



Revisions		
No.	Description	Date

DESIGNED BY
DRAWN BY
CHECKED BY
DATE 11/17/2015
SCALE As Shown

 Virginia Department of Rail and Public Transportation		
Washington D.C. to Richmond Southeast High Speed Rail		
RIC Boulevard Station Only - S-Line (BVSO S-Line) Alignment Option Mapbook		
PROJECT NO.	DRAWING NO. LL	SHEET NO. 11

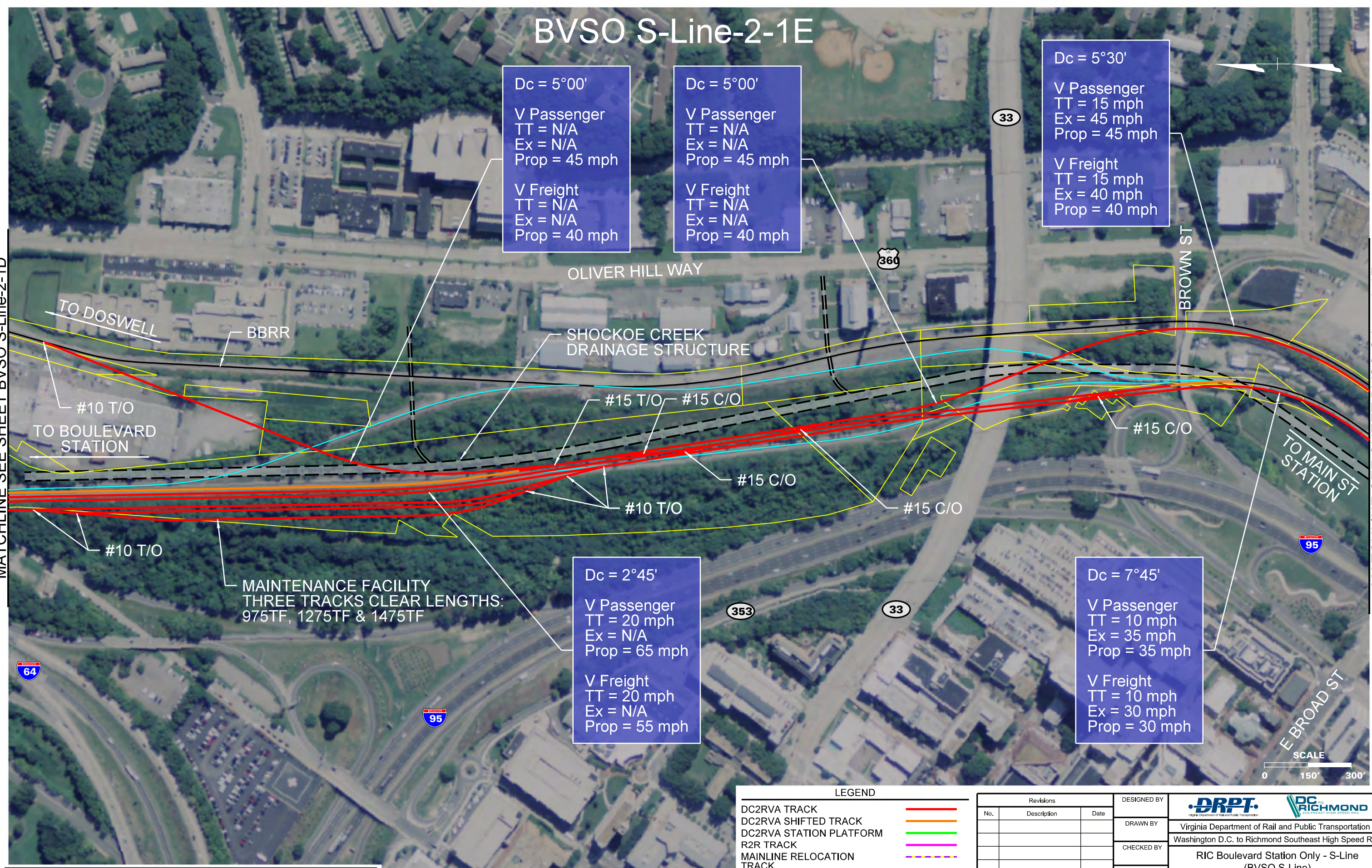
THESE PLANS ARE UNFINISHED AND UNAPPROVED AND ARE NOT TO BE USED FOR ANY TYPE OF CONSTRUCTION OR THE ACQUISITION OF RIGHT OF WAY.



# BVSO S-Line-2-1E

MATCHLINE SEE SHEET BVSO S-Line-2-1D

MATCHLINE SEE SHEET BVSO S-Line-2-1F



Dc = 5°00'  
V Passenger  
TT = N/A  
Ex = N/A  
Prop = 45 mph  
  
V Freight  
TT = N/A  
Ex = N/A  
Prop = 40 mph

Dc = 5°00'  
V Passenger  
TT = N/A  
Ex = N/A  
Prop = 45 mph  
  
V Freight  
TT = N/A  
Ex = N/A  
Prop = 40 mph

Dc = 5°30'  
V Passenger  
TT = 15 mph  
Ex = 45 mph  
Prop = 45 mph  
  
V Freight  
TT = 15 mph  
Ex = 40 mph  
Prop = 40 mph

Dc = 2°45'  
V Passenger  
TT = 20 mph  
Ex = N/A  
Prop = 65 mph  
  
V Freight  
TT = 20 mph  
Ex = N/A  
Prop = 55 mph

Dc = 7°45'  
V Passenger  
TT = 10 mph  
Ex = 35 mph  
Prop = 35 mph  
  
V Freight  
TT = 10 mph  
Ex = 30 mph  
Prop = 30 mph

MAINTENANCE FACILITY  
THREE TRACKS CLEAR LENGTHS:  
975TF, 1275TF & 1475TF

THESE PLANS ARE UNFINISHED AND UNAPPROVED AND ARE NOT TO BE USED FOR ANY TYPE OF CONSTRUCTION OR THE ACQUISITION OF RIGHT OF WAY.

LEGEND

DC2RVA TRACK	Red line
DC2RVA SHIFTED TRACK	Orange line
DC2RVA STATION PLATFORM	Green line
R2R TRACK	Purple line
MAINLINE RELOCATION TRACK	Yellow line
RETIRED TRACK	Cyan line
EXISTING TRACK	Black line
EXISTING R/W	White line

Revisions		
No.	Description	Date

DESIGNED BY	DRPT Virginia Department of Rail and Public Transportation Washington D.C. to Richmond Southeast High Speed Rail
DRAWN BY	
CHECKED BY	
DATE	11/17/2015
SCALE	As Shown

PROJECT NO.	DRAWING NO. LL	SHEET NO. 12

11/13/2015 4:25:21 PM  
BVSO-S-02-1E.dgn  
Printed by gmdlin



**MATCHLINE SEE SHEET BVSO S-Line-2-1E**



THESE PLANS ARE UNFINISHED AND UNAPPROVED AND ARE NOT TO BE USED  
FOR ANY TYPE OF CONSTRUCTION OR THE ACQUISITION OF RIGHT OF WAY.

Plotted by: gmodlin  
BVS0-S-02-IF.dgn



# BVSO S-Line-3A

JAMES RIVER

95

TO CENTRALIA

2 - R2R TRACKS  
(1 EXIST AND 1 PROP)

#20 C/O

#20 C/O

#10 T/O

TO MAIN ST STATION

MATCHLINE SEE SHEET BVSO S-Line-2-1F

MATCHLINE SEE SHEET BVSO S-Line-3B

NORFOLK  
SOUTHERN

E 4TH ST

MAURY ST

SCALE

0 150' 300'

## LEGEND

DC2RVA TRACK	
DC2RVA SHIFTED TRACK	
DC2RVA STATION PLATFORM	
R2R TRACK	
MAINLINE RELOCATION TRACK	
RETIRED TRACK	
EXISTING TRACK	
EXISTING R/W	

Revisions		
No.	Description	Date

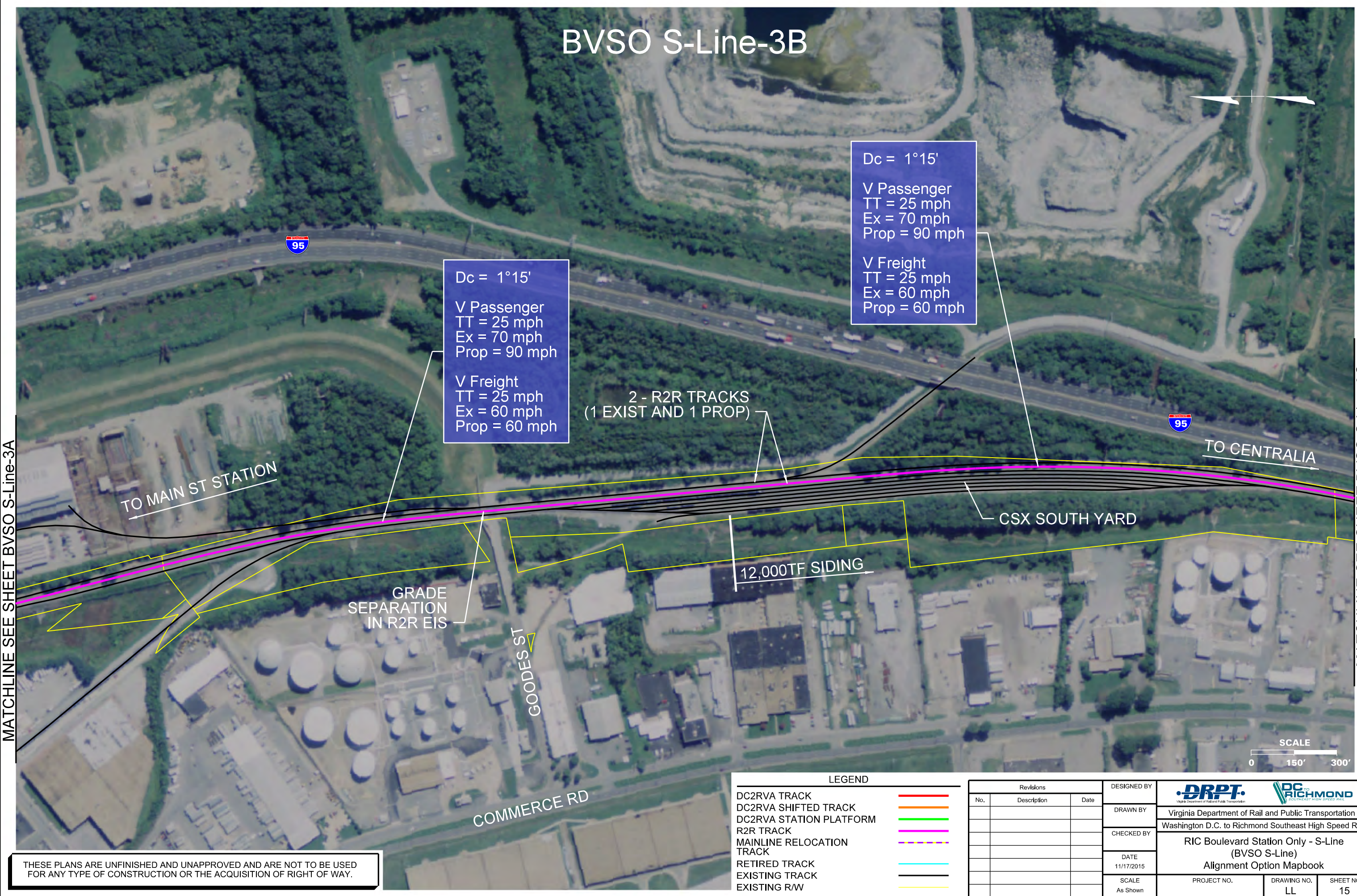
DESIGNED BY
DRAWN BY
CHECKED BY
DATE 11/17/2015
SCALE As Shown

 Virginia Department of Rail and Public Transportation		
 Washington D.C. to Richmond Southeast High Speed Rail		
RIC Boulevard Station Only - S-Line (BVSO S-Line) Alignment Option Mapbook		
PROJECT NO.	DRAWING NO. LL	SHEET NO. 14

THESE PLANS ARE UNFINISHED AND UNAPPROVED AND ARE NOT TO BE USED FOR ANY TYPE OF CONSTRUCTION OR THE ACQUISITION OF RIGHT OF WAY.



BVSO S-Line-3B



MATCHLINE SEE SHEET BVSO S-Line-3A

MATCHLINE SEE SHEET BVSO S-Line-3C

Dc = 1°15'  
V Passenger  
TT = 25 mph  
Ex = 70 mph  
Prop = 90 mph  
  
V Freight  
TT = 25 mph  
Ex = 60 mph  
Prop = 60 mph

Dc = 1°15'  
V Passenger  
TT = 25 mph  
Ex = 70 mph  
Prop = 90 mph  
  
V Freight  
TT = 25 mph  
Ex = 60 mph  
Prop = 60 mph

2 - R2R TRACKS  
(1 EXIST AND 1 PROP)

TO MAIN ST STATION

TO CENTRALIA

CSX SOUTH YARD

12,000TF SIDING

GRADE  
SEPARATION  
IN R2R EIS

GOODES ST

COMMERCE RD

SCALE  
0 150' 300'

THESE PLANS ARE UNFINISHED AND UNAPPROVED AND ARE NOT TO BE USED FOR ANY TYPE OF CONSTRUCTION OR THE ACQUISITION OF RIGHT OF WAY.

LEGEND	
DC2RVA TRACK	<div></div>
DC2RVA SHIFTED TRACK	<div></div>
DC2RVA STATION PLATFORM	<div></div>
R2R TRACK	<div></div>
MAINLINE RELOCATION TRACK	<div></div>
RETIRED TRACK	<div></div>
EXISTING TRACK	<div></div>
EXISTING R/W	<div></div>

Revisions		
No.	Description	Date

DESIGNED BY	<div><div>DRPT</div><div>Virginia Department of Rail and Public Transportation</div></div>		
DRAWN BY	Virginia Department of Rail and Public Transportation		
CHECKED BY	Washington D.C. to Richmond Southeast High Speed Rail		
DATE	RIC Boulevard Station Only - S-Line (BVSO S-Line) Alignment Option Mapbook		
SCALE	As Shown	PROJECT NO.	DRAWING NO. LL
		SHEET NO.	15

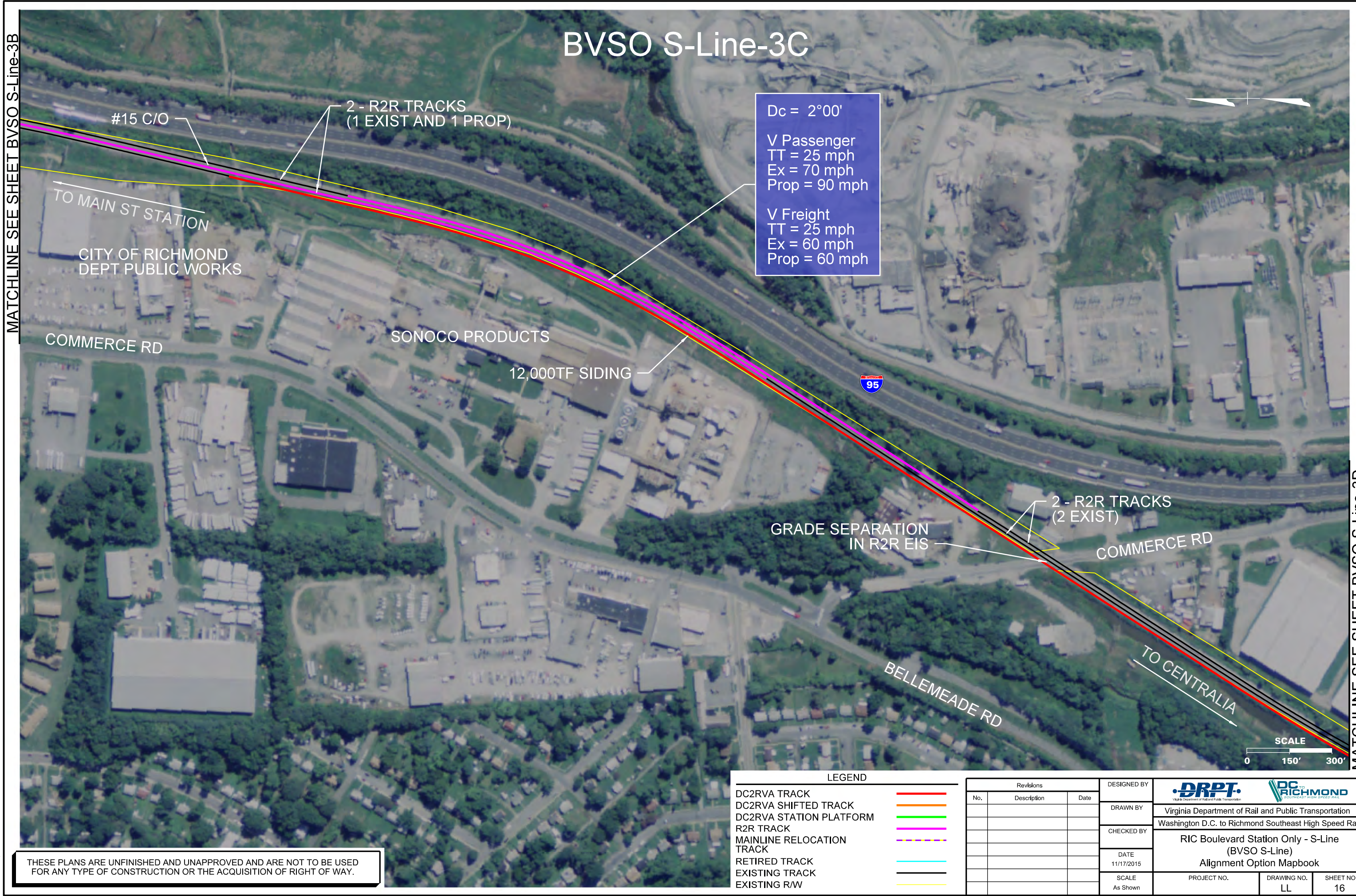
Plotted by gmdlin 11/13/2015 4:29:39 PM BVSO-S-03B.dgn



MATCHLINE SEE SHEET BVSO S-Line-3B

MATCHLINE SEE SHEET BVSO S-Line-3D

11/13/2015 4:29:45 PM  
BVSO-S-03C.dgn



Revisions			DESIGNED BY	
No.	Description	Date	DRAWN BY	
			CHECKED BY	
			DATE	
			SCALE	
			As Shown	

DRPT Virginia Department of Rail and Public Transportation		
RIC Boulevard Station Only - S-Line (BVSO S-Line) Alignment Option Mapbook		
PROJECT NO.	DRAWING NO. LL	SHEET NO. 16



BVSO S-Line-3D



ALLEGHANY WAREHOUSES

2 - R2R TRACKS  
(2 EXIST)

GRADE SEPARATION  
IN R2R EIS

RUFFIN RD

TO CENTRALIA

12,000TF SIDING

12,000TF SIDING

POWER #15 T/O

SCALE

0 150' 300'

MATCHLINE SEE SHEET BVSO S-Line-3C

MATCHLINE SEE SHEET BVSO S-Line-3E

Dc = 1°00'  
V Passenger  
TT = 25 mph  
Ex = 85 mph  
Prop = 90 mph  
  
V Freight  
TT = 25 mph  
Ex = 60 mph  
Prop = 60 mph

THESE PLANS ARE UNFINISHED AND UNAPPROVED AND ARE NOT TO BE USED FOR ANY TYPE OF CONSTRUCTION OR THE ACQUISITION OF RIGHT OF WAY.

LEGEND

- DC2RVA TRACK
- DC2RVA SHIFTED TRACK
- DC2RVA STATION PLATFORM
- R2R TRACK
- MAINLINE RELOCATION TRACK
- RETIRED TRACK
- EXISTING TRACK
- EXISTING R/W

Revisions		
No.	Description	Date

DESIGNED BY	 Virginia Department of Rail and Public Transportation Washington D.C. to Richmond Southeast High Speed Rail		
DRAWN BY			
CHECKED BY	RIC Boulevard Station Only - S-Line (BVSO S-Line) Alignment Option Mapbook		
DATE			
SCALE	As Shown	PROJECT NO.	DRAWING NO.
			LL
			SHEET NO.
			17



BVSO S-Line-3E

PHILLIP MORRIS USA

161

TO MAIN ST STATION

TO CENTRALIA

#20 C/O

#20 C/O

BELLS RD

GRADE SEPARATION  
IN R2R EIS

2 - R2R TRACKS  
(2 EXIST)

DALE AVE





MATCHLINE SEE SHEET BVSO S-Line-3D

MATCHLINE SEE SHEET BVSO S-Line-3F

LEGEND		
DC2RVA TRACK		
DC2RVA SHIFTED TRACK		
DC2RVA STATION PLATFORM		
R2R TRACK		
MAINLINE RELOCATION TRACK		
RETIRED TRACK		
EXISTING TRACK		
EXISTING R/W		

Revisions		
No.	Description	Date

DESIGNED BY
DRAWN BY
CHECKED BY
DATE
SCALE



Virginia Department of Rail and Public Transportation

Washington D.C. to Richmond Southeast High Speed Rail

RIC Boulevard Station Only - S-Line  
(BVSO S-Line)  
Alignment Option Mapbook

PROJECT NO.	DRAWING NO.	SHEET NO.
	LL	18

THESE PLANS ARE UNFINISHED AND UNAPPROVED AND ARE NOT TO BE USED FOR ANY TYPE OF CONSTRUCTION OR THE ACQUISITION OF RIGHT OF WAY.



BVSO S-Line-3F

TRENTON AVE

DUPONT

TO MAIN ST STATION

TO CENTRALIA

2 - R2R TRACKS  
(2 EXIST)



MATCHLINE SEE SHEET BVSO S-Line-3E

MATCHLINE SEE SHEET BVSO S-Line-3G



THESE PLANS ARE UNFINISHED AND UNAPPROVED AND ARE NOT TO BE USED FOR ANY TYPE OF CONSTRUCTION OR THE ACQUISITION OF RIGHT OF WAY.

LEGEND

- DC2RVA TRACK
- DC2RVA SHIFTED TRACK
- DC2RVA STATION PLATFORM
- R2R TRACK
- MAINLINE RELOCATION TRACK
- RETIRED TRACK
- EXISTING TRACK
- EXISTING R/W

Revisions		
No.	Description	Date

DESIGNED BY
DRAWN BY
CHECKED BY
DATE
SCALE



Virginia Department of Rail and Public Transportation

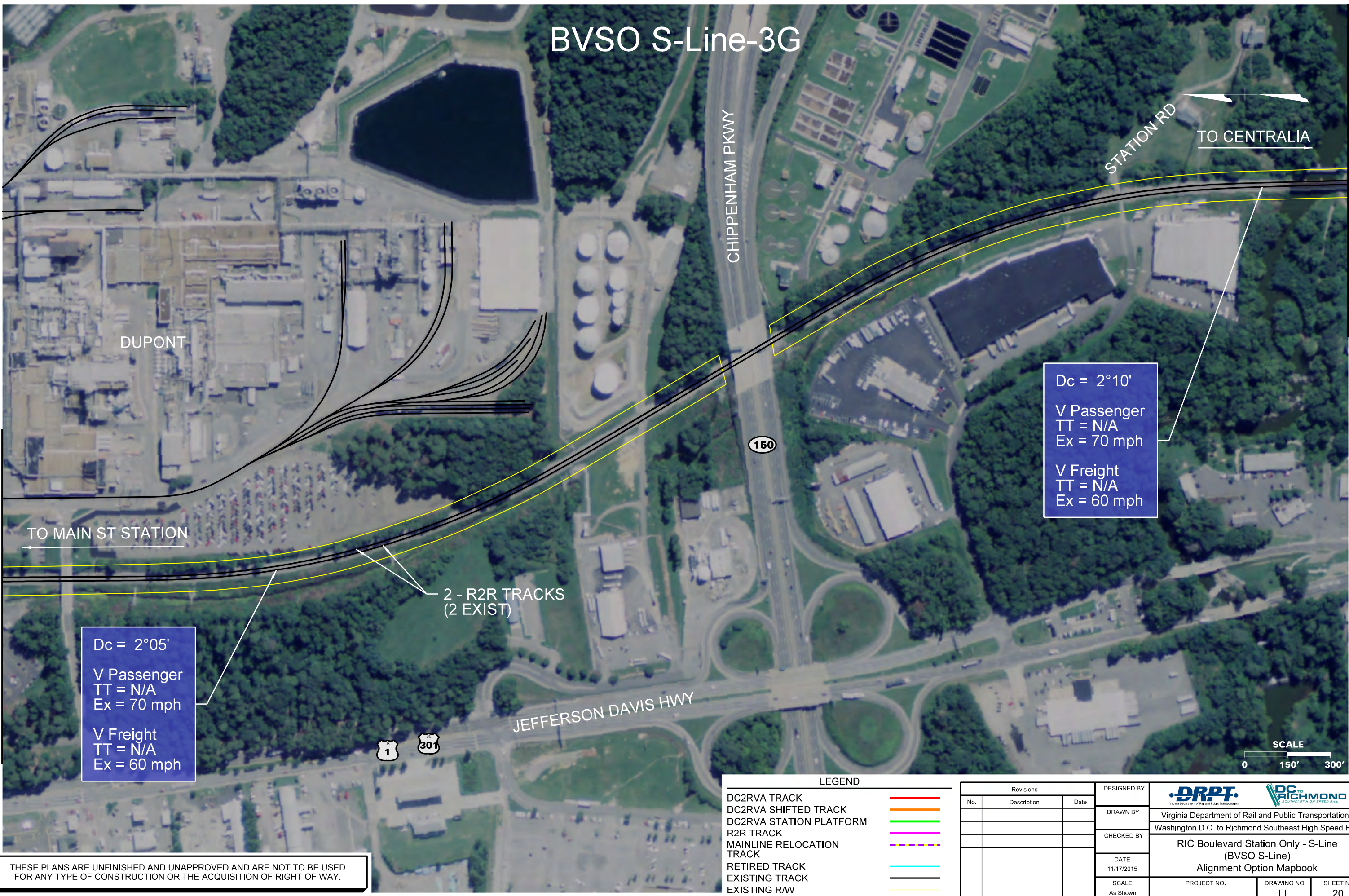
Washington D.C. to Richmond Southeast High Speed Rail

RIC Boulevard Station Only - S-Line  
(BVSO S-Line)  
Alignment Option Mapbook

PROJECT NO.	DRAWING NO.	SHEET NO.
	LL	19



# BVSO S-Line-3G



MATCHLINE SEE SHEET BVSO S-Line-3F

MATCHLINE SEE SHEET BVSO S-Line-3H

Dc = 2°05'  
V Passenger  
TT = N/A  
Ex = 70 mph  
  
V Freight  
TT = N/A  
Ex = 60 mph

Dc = 2°10'  
V Passenger  
TT = N/A  
Ex = 70 mph  
  
V Freight  
TT = N/A  
Ex = 60 mph



2 - R2R TRACKS  
(2 EXIST)

### LEGEND

- DC2RVA TRACK
- DC2RVA SHIFTED TRACK
- DC2RVA STATION PLATFORM
- R2R TRACK
- MAINLINE RELOCATION TRACK
- RETIRED TRACK
- EXISTING TRACK
- EXISTING R/W

Revisions		
No.	Description	Date

DESIGNED BY
DRAWN BY
CHECKED BY
DATE 11/17/2015
SCALE As Shown



Virginia Department of Rail and Public Transportation

Washington D.C. to Richmond Southeast High Speed Rail

**RIC Boulevard Station Only - S-Line  
(BVSO S-Line)**

**Alignment Option Mapbook**

PROJECT NO.	DRAWING NO. LL	SHEET NO. 20
-------------	-------------------	-----------------

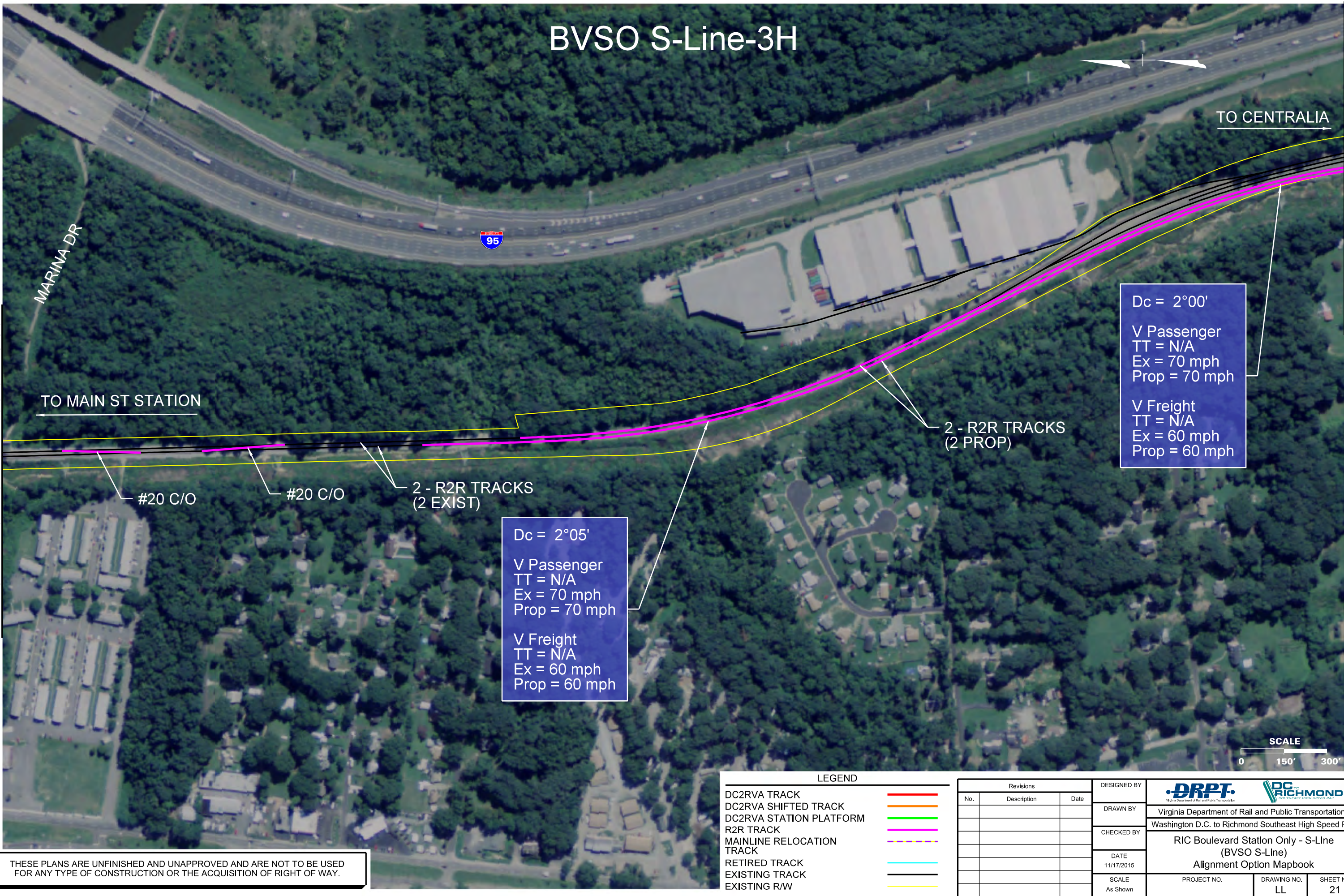
THESE PLANS ARE UNFINISHED AND UNAPPROVED AND ARE NOT TO BE USED FOR ANY TYPE OF CONSTRUCTION OR THE ACQUISITION OF RIGHT OF WAY.



BVSO S-Line-3H

MATCHLINE SEE SHEET BVSO S-Line-3G

MATCHLINE SEE SHEET BVSO S-Line-3I



TO MAIN ST STATION

TO CENTRALIA

#20 C/O

#20 C/O

2 - R2R TRACKS  
(2 EXIST)

2 - R2R TRACKS  
(2 PROP)

Dc = 2°00'  
V Passenger  
TT = N/A  
Ex = 70 mph  
Prop = 70 mph  
  
V Freight  
TT = N/A  
Ex = 60 mph  
Prop = 60 mph

Dc = 2°05'  
V Passenger  
TT = N/A  
Ex = 70 mph  
Prop = 70 mph  
  
V Freight  
TT = N/A  
Ex = 60 mph  
Prop = 60 mph



SCALE

0 150' 300'

LEGEND

- DC2RVA TRACK
- DC2RVA SHIFTED TRACK
- DC2RVA STATION PLATFORM
- R2R TRACK
- MAINLINE RELOCATION TRACK
- RETIRED TRACK
- EXISTING TRACK
- EXISTING R/W

Revisions		
No.	Description	Date

DESIGNED BY	<div> Virginia Department of Rail and Public Transportation Washington D.C. to Richmond Southeast High Speed Rail</div>		
DRAWN BY			
CHECKED BY			
DATE	11/17/2015		
SCALE	As Shown		
PROJECT NO.	DRAWING NO.	SHEET NO.	
	LL	21	

THESE PLANS ARE UNFINISHED AND UNAPPROVED AND ARE NOT TO BE USED FOR ANY TYPE OF CONSTRUCTION OR THE ACQUISITION OF RIGHT OF WAY.



MATCHLINE SEE SHEET BVSO S-Line-3H

# BVSO S-Line-3I

TO MAIN ST STATION

2 - R2R TRACKS  
(2 PROP)

Dc = 2°00'

V Passenger  
TT = N/A  
Ex = 70 mph  
Prop = 70 mph

V Freight  
TT = N/A  
Ex = 60 mph  
Prop = 60 mph

Dc = 2°05'

V Passenger  
TT = N/A  
Ex = 70 mph  
Prop = 70 mph

V Freight  
TT = N/A  
Ex = 60 mph  
Prop = 60 mph

TO CENTRALIA

MATCHLINE SEE SHEET BVSO S-Line-3J

ELLIHAM AVE

JEFFERSON DAVIS HWY



## LEGEND

- DC2RVA TRACK
- DC2RVA SHIFTED TRACK
- DC2RVA STATION PLATFORM
- R2R TRACK
- MAINLINE RELOCATION TRACK
- RETIRED TRACK
- EXISTING TRACK
- EXISTING R/W

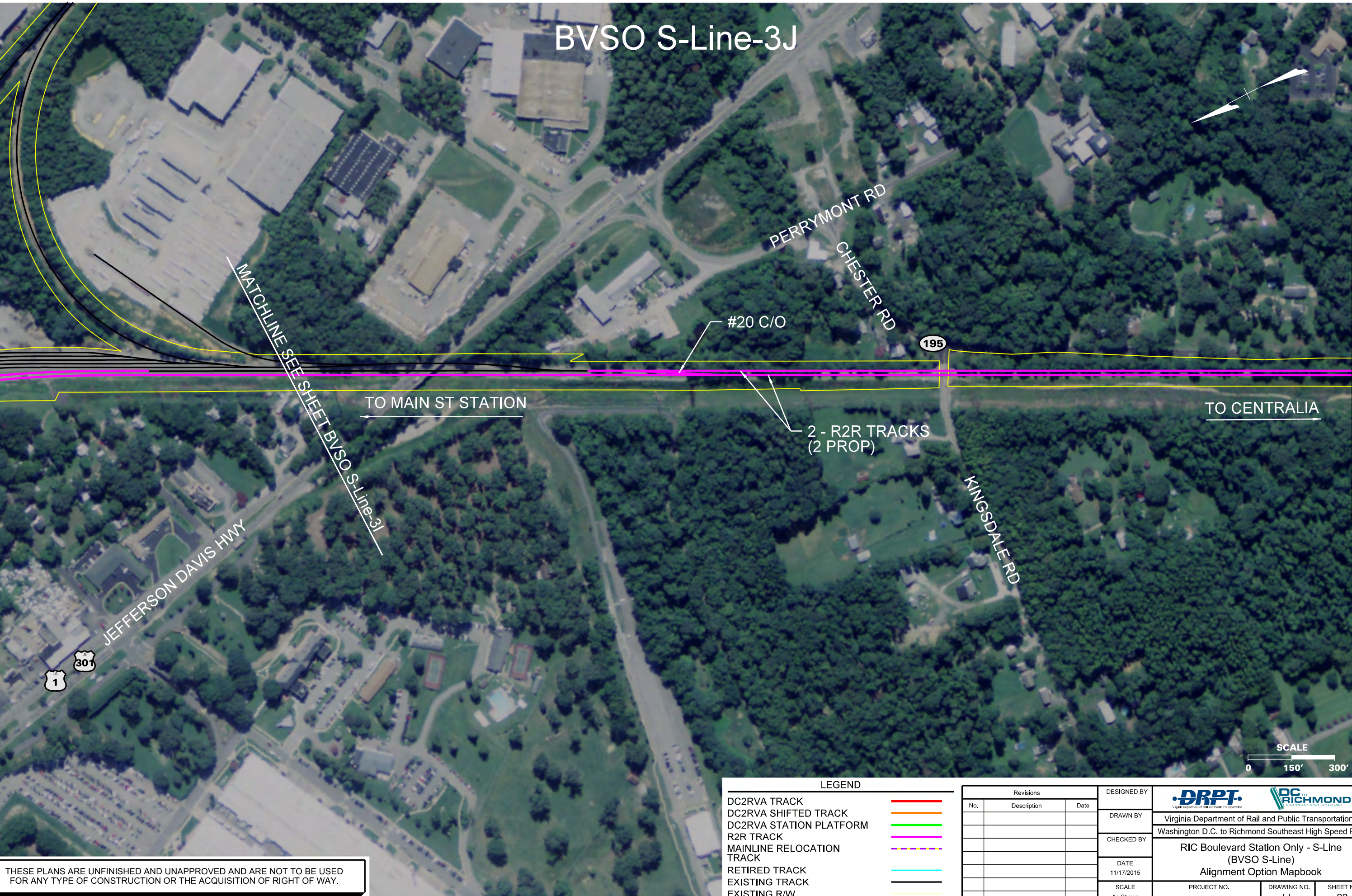
Revisions		
No.	Description	Date

DESIGNED BY			
DRAWN BY	Virginia Department of Rail and Public Transportation		
CHECKED BY	Washington D.C. to Richmond Southeast High Speed Rail		
DATE	RIC Boulevard Station Only - S-Line (BVSO S-Line) Alignment Option Mapbook		
SCALE	PROJECT NO.	DRAWING NO.	SHEET NO.
As Shown		LL	22

THESE PLANS ARE UNFINISHED AND UNAPPROVED AND ARE NOT TO BE USED FOR ANY TYPE OF CONSTRUCTION OR THE ACQUISITION OF RIGHT OF WAY.



BVSO S-Line-3J



MATCHLINE SEE SHEET BVSO S-Line-3I

MATCHLINE SEE SHEET BVSO S-Line-3K

TO MAIN ST STATION

TO CENTRALIA

#20 C/O

2 - R2R TRACKS  
(2 PROP)

195

JEFFERSON DAVIS HWY

KINGSDALE RD

1 301

SCALE  
0 150' 300'

LEGEND

- DC2RVA TRACK
- DC2RVA SHIFTED TRACK
- DC2RVA STATION PLATFORM
- R2R TRACK
- MAINLINE RELOCATION TRACK
- RETIRED TRACK
- EXISTING TRACK
- EXISTING R/W

Revisions		
No.	Description	Date

DESIGNED BY
DRAWN BY
CHECKED BY
DATE 11/17/2015
SCALE As Shown

<div><div>DRPT</div><div>Virginia Department of Rail and Public Transportation</div></div> <div><div>RIC</div><div>Richmond</div><div>Richmond Southeast High Speed Rail</div></div>		
Virginia Department of Rail and Public Transportation		
Washington D.C. to Richmond Southeast High Speed Rail		
RIC Boulevard Station Only - S-Line (BVSO S-Line)		
Alignment Option Mapbook		
PROJECT NO.	DRAWING NO. LL	SHEET NO. 23

THESE PLANS ARE UNFINISHED AND UNAPPROVED AND ARE NOT TO BE USED FOR ANY TYPE OF CONSTRUCTION OR THE ACQUISITION OF RIGHT OF WAY.



# BVSO S-Line-3K

MATCHLINE SEE SHEET BVSO S-Line-3J

TO MAIN ST STATION

2 - R2R TRACKS  
(2 PROP)

BRINKLEY RD

KINGSDALE RD

CHESTER RD

145

TO CENTRALIA

MATCHLINE SEE SHEET BVSO S-Line-3L

Dc = 2°30'  
V Passenger  
TT = N/A  
Ex = 70 mph  
Prop = 70 mph  
  
V Freight  
TT = N/A  
Ex = 60 mph  
Prop = 60 mph



LEGEND	
DC2RVA TRACK	<div></div>
DC2RVA SHIFTED TRACK	<div></div>
DC2RVA STATION PLATFORM	<div></div>
R2R TRACK	<div></div>
MAINLINE RELOCATION TRACK	<div></div>
RETIRED TRACK	<div></div>
EXISTING TRACK	<div></div>
EXISTING R/W	<div></div>

Revisions		
No.	Description	Date

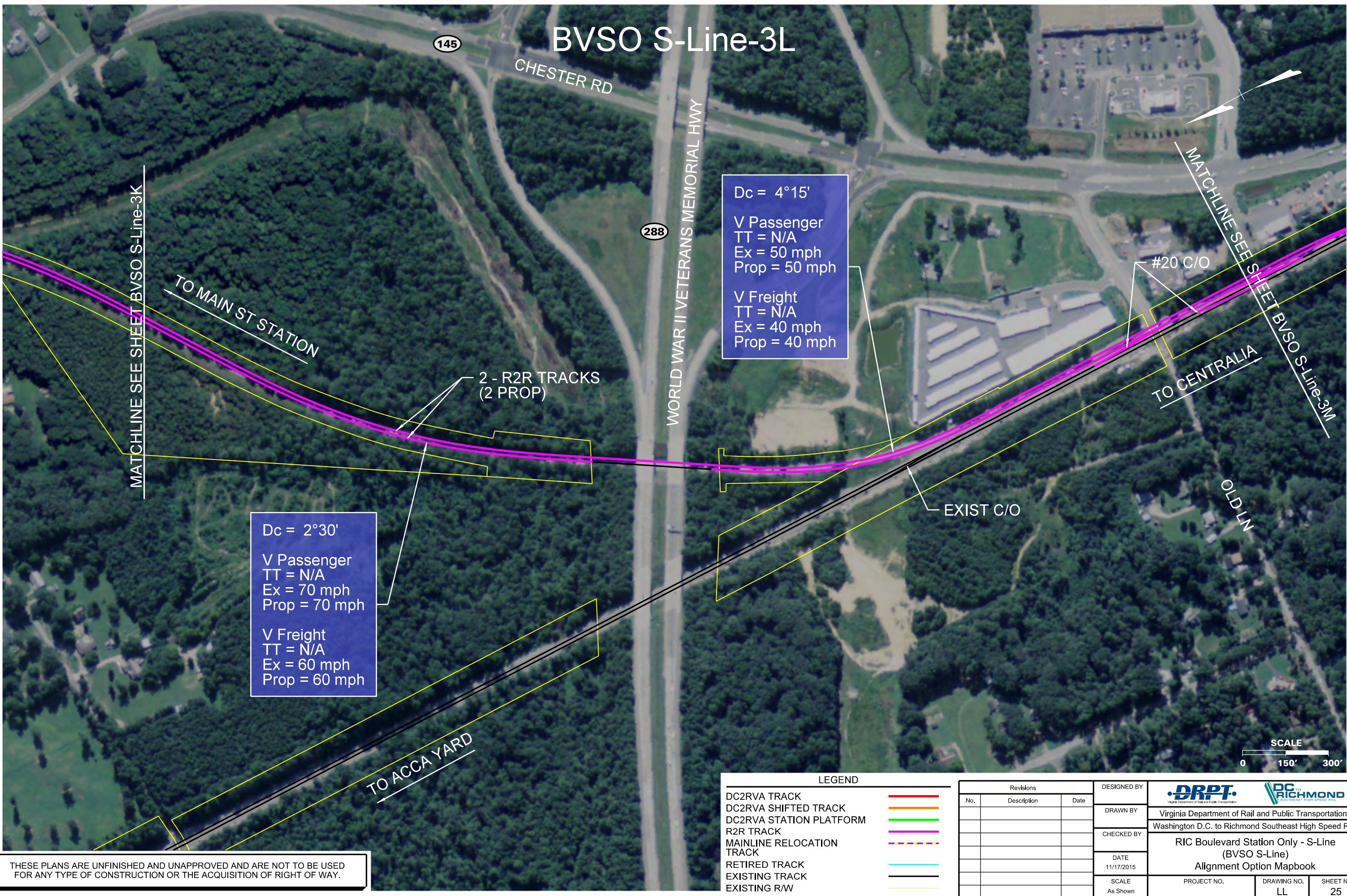
DESIGNED BY
DRAWN BY
CHECKED BY
DATE 11/17/2015
SCALE As Shown

<div><div>DRPT</div><div>Virginia Department of Rail and Public Transportation</div></div> <div><div>RIC</div><div>RICHMOND</div><div>SOUTHEAST HIGH SPEED RAIL</div></div>		
Virginia Department of Rail and Public Transportation Washington D.C. to Richmond Southeast High Speed Rail		
RIC Boulevard Station Only - S-Line (BVSO S-Line) Alignment Option Mapbook		
PROJECT NO.	DRAWING NO. LL	SHEET NO. 24

THESE PLANS ARE UNFINISHED AND UNAPPROVED AND ARE NOT TO BE USED FOR ANY TYPE OF CONSTRUCTION OR THE ACQUISITION OF RIGHT OF WAY.



# BVSO S-Line-3L





Dc = 4°15'  
V Passenger  
TT = N/A  
Ex = 50 mph  
Prop = 50 mph  
  
V Freight  
TT = N/A  
Ex = 40 mph  
Prop = 40 mph

Dc = 2°30'  
V Passenger  
TT = N/A  
Ex = 70 mph  
Prop = 70 mph  
  
V Freight  
TT = N/A  
Ex = 60 mph  
Prop = 60 mph

LEGEND		
DC2RVA TRACK		
DC2RVA SHIFTED TRACK		
DC2RVA STATION PLATFORM		
R2R TRACK		
MAINLINE RELOCATION TRACK		
RETIRED TRACK		
EXISTING TRACK		
EXISTING R/W		

Revisions		
No.	Description	Date

DESIGNED BY
DRAWN BY
CHECKED BY
DATE
SCALE



Virginia Department of Rail and Public Transportation

Washington D.C. to Richmond Southeast High Speed Rail

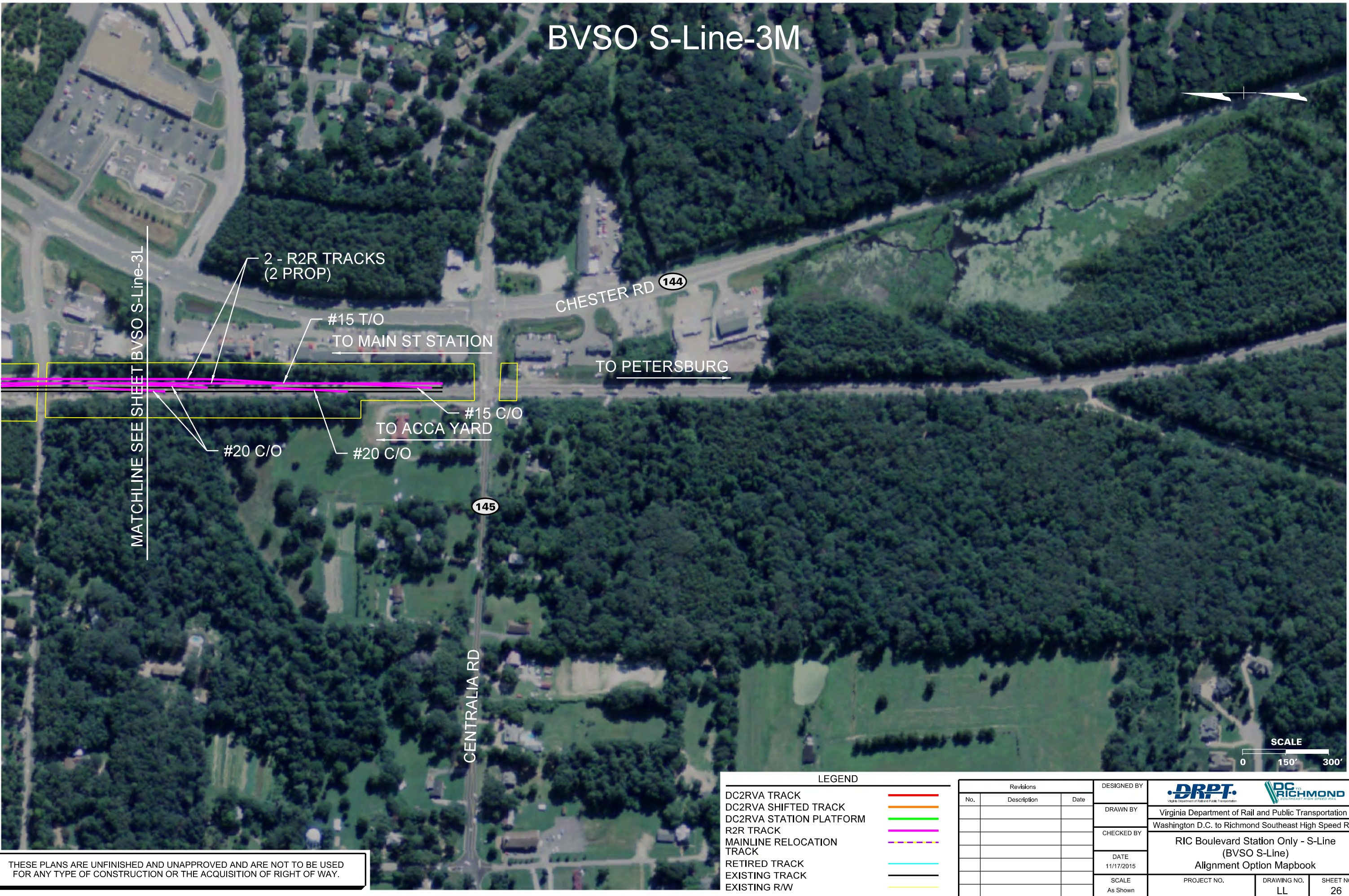
RIC Boulevard Station Only - S-Line  
(BVSO S-Line)  
Alignment Option Mapbook

PROJECT NO.	DRAWING NO.	SHEET NO.
	LL	25

THESE PLANS ARE UNFINISHED AND UNAPPROVED AND ARE NOT TO BE USED FOR ANY TYPE OF CONSTRUCTION OR THE ACQUISITION OF RIGHT OF WAY.



# BVSO S-Line-3M





THESE PLANS ARE UNFINISHED AND UNAPPROVED AND ARE NOT TO BE USED FOR ANY TYPE OF CONSTRUCTION OR THE ACQUISITION OF RIGHT OF WAY.

### LEGEND

- DC2RVA TRACK
- DC2RVA SHIFTED TRACK
- DC2RVA STATION PLATFORM
- R2R TRACK
- MAINLINE RELOCATION TRACK
- RETIRED TRACK
- EXISTING TRACK
- EXISTING R/W

Revisions		
No.	Description	Date

DESIGNED BY	<div><div></div><div>Virginia Department of Rail and Public Transportation</div><div>Washington D.C. to Richmond Southeast High Speed Rail</div></div>		
DRAWN BY	Virginia Department of Rail and Public Transportation		
CHECKED BY	Washington D.C. to Richmond Southeast High Speed Rail		
DATE	RIC Boulevard Station Only - S-Line (BVSO S-Line)		
11/17/2015	Alignment Option Mapbook		
SCALE	PROJECT NO.	DRAWING NO.	SHEET NO.
As Shown		LL	26