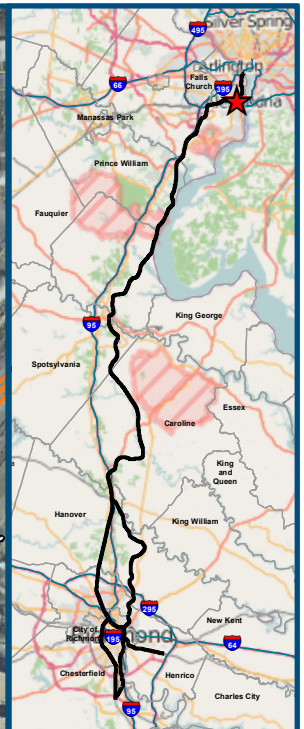
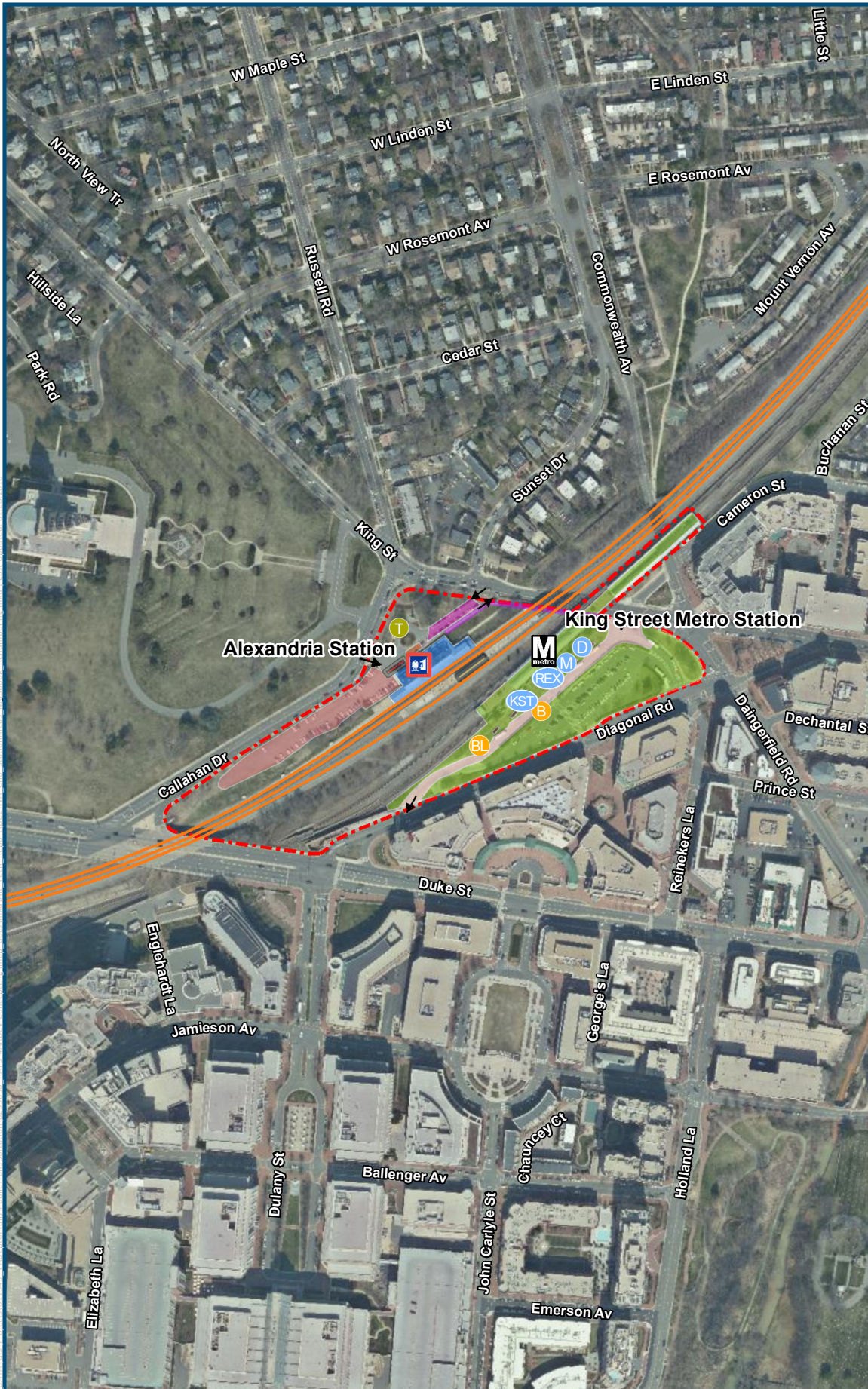


0 5.5 11
Miles
1 inch = 11 miles
@ 8.5 x 11 inches
Projection: Lambert Conformal Conic
State Plane Virginia North FIPS 4501 Feet
North American Datum of 1983
Basemap Source: ESRI

Legend

- Existing Track
- Existing Amtrak Station
- Existing VRE Station
- Existing Amtrak/VRE Station
- Planned VRE Station
- Potential Amtrak Station

**Figure PP-1
Corridor Stations
Overview Map**



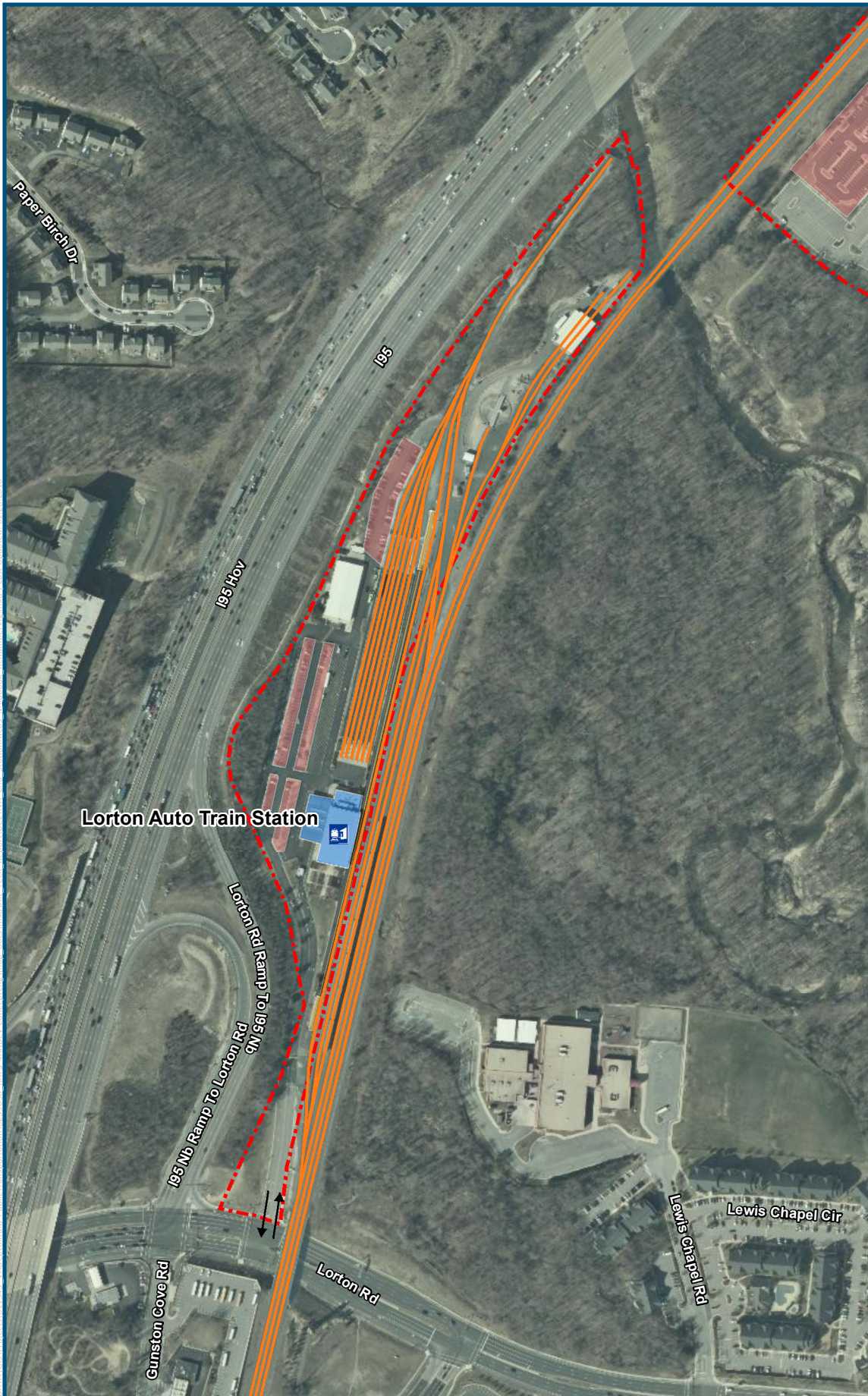
Feet
1 inch = 400 feet
@ 8.5 x 11 inches
Projection: Lambert Conformal Conic
State Plane Virginia North FIPS 4501 Feet
North American Datum of 1983

2013 VGIN VBMP Aerial Imagery

Legend

- Amtrak/VRE Station
- Metrorail Station
- Existing Track
- Station Site
- Bike Locker
- Bike Parking
- Taxi
- Dash
- King Street Trolley
- Metro Bus
- Richmond Highway Express
- Accessible Path
- Bus Stop
- Buses
- Station Building
- Pick Up/Drop-Off
- ADA Parking
- Parking
- Short-Term Parking
- Platform with Shelter
- WMATA

Figure PP-4
Alexandria Station
Vicinity Map



0 200 400
Feet
1 inch = 400 feet
@ 8.5 x 11 inches

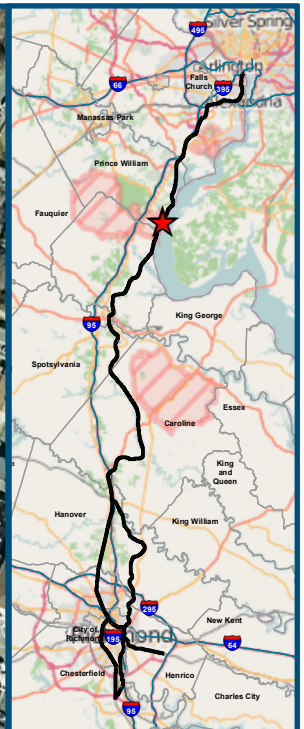
Projection: Lambert Conformal Conic
State Plane Virginia North FIPS 4501 Feet
North American Datum of 1983

2013 VGIN VBMP Aerial Imagery

Legend

- Amtrak Station
- Existing Track
- Station Site
- Station Building
- Parking
- Platform
- Platform with Shelter

Figure PP-5
Lorton Auto Train
Station
Vicinity Map



0 100 200
Feet
1 inch = 200 feet
@ 8.5 x 11 inches

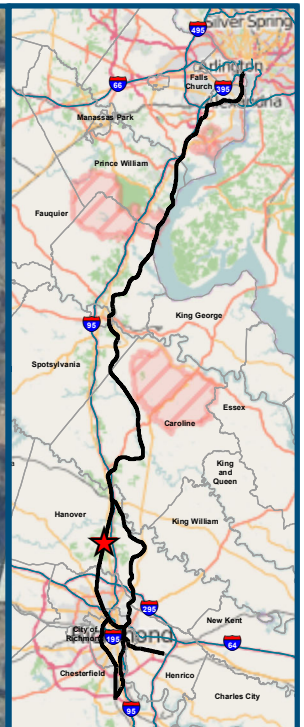
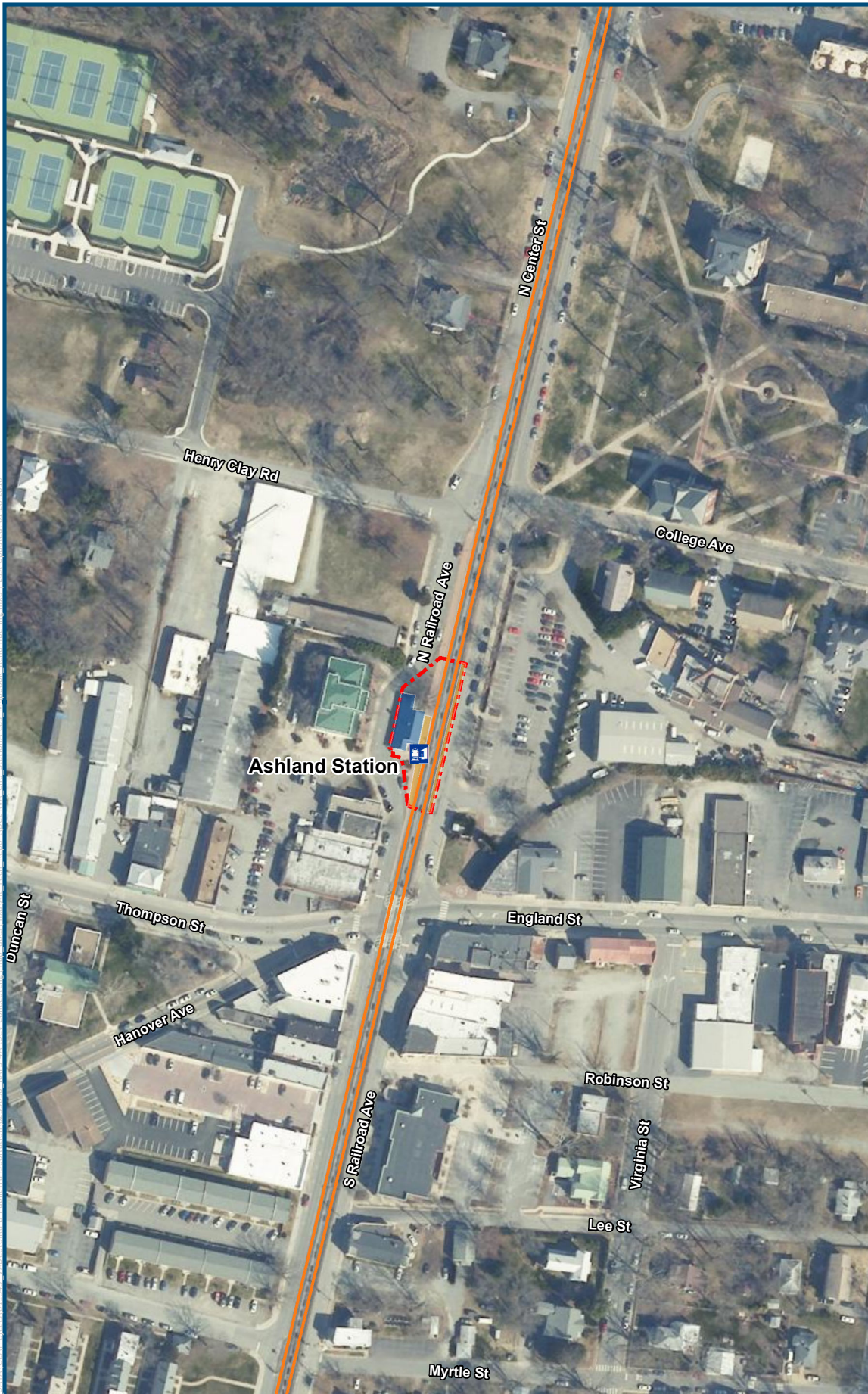
Projection: Lambert Conformal Conic
State Plane Virginia North FIPS 4501 Feet
North American Datum of 1983

2013 VGIN VBMP Aerial Imagery

Legend

- Amtrak/VRE Station
- Existing Track
- Station Site
- Bike Parking
- PRTC OmniLink
- Station Building
- ADA Parking
- Parking

Figure PP-11
Quantico Station
Vicinity Map



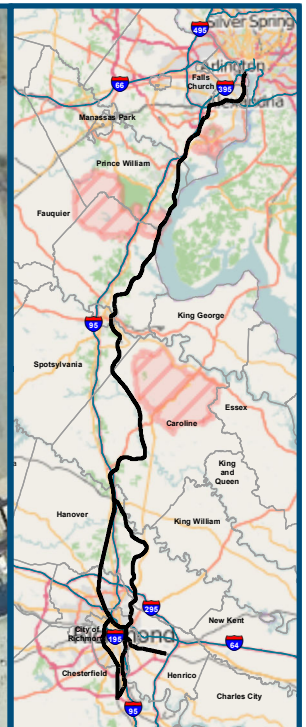
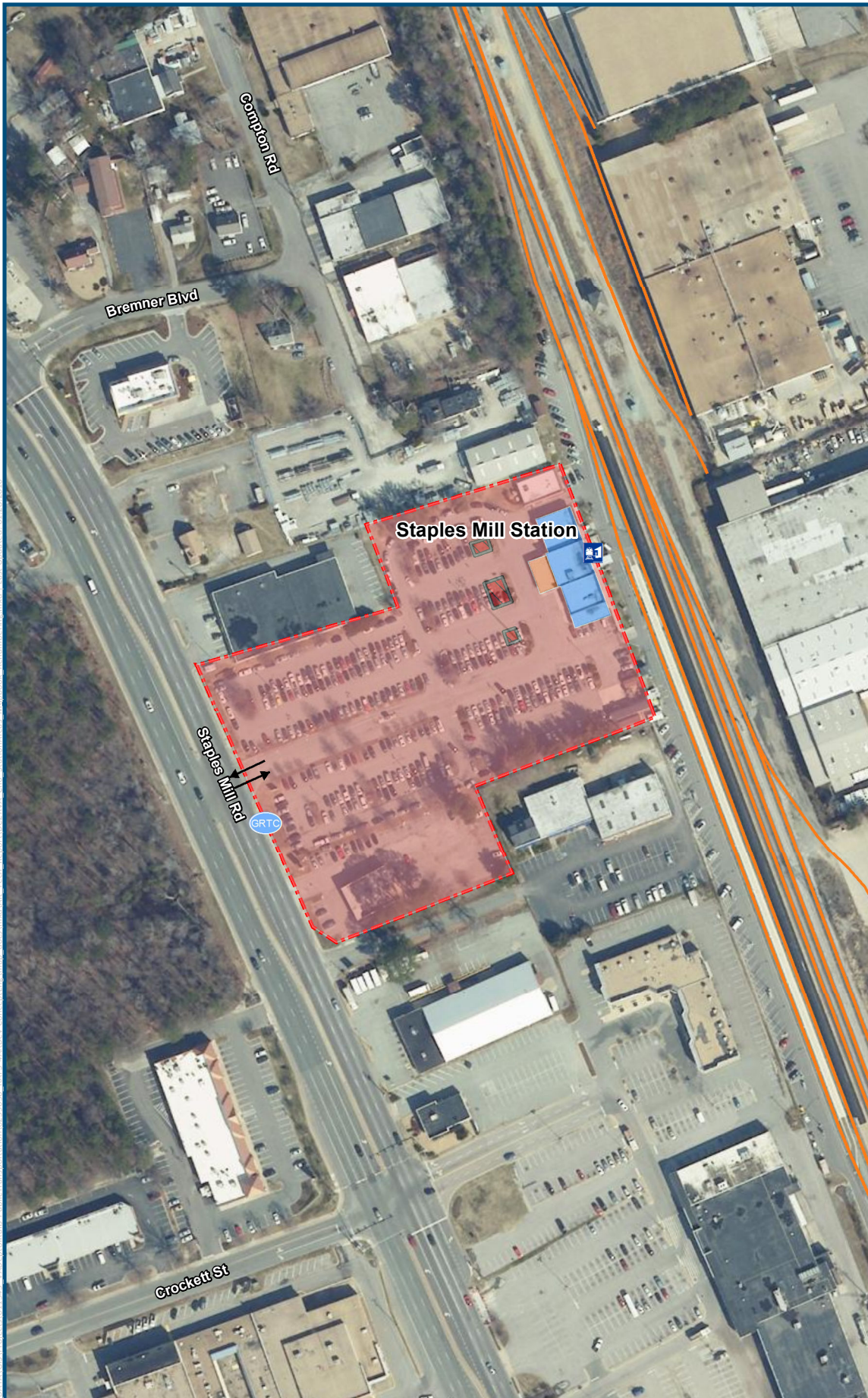
Projection: Lambert Conformal Conic
State Plane Virginia North FIPS 4501 Feet
North American Datum of 1983

2013 VGIN VBMP Aerial Imagery

Legend

- Amtrak Station
- Existing Track
- Station Site
- Building (used as Visitor Center not Station)
- Platform

**Figure PP-17
Ashland Station
Vicinity Map**



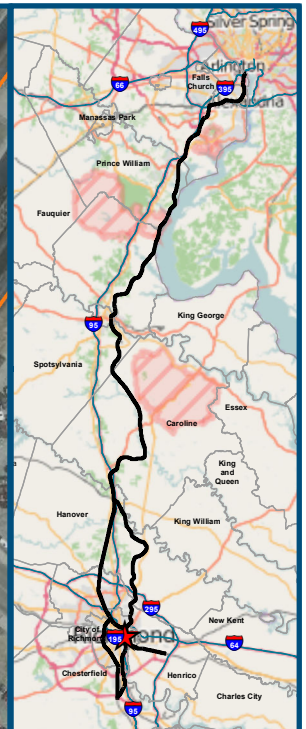
Feet
1 inch = 200 feet
@ 8.5 x 11 inches
Projection: Lambert Conformal Conic
State Plane Virginia North FIPS 4501 Feet
North American Datum of 1983

2013 VGIN VBMP Aerial Imagery

Legend

- Amtrak Station
- Existing Track
- Station Site
- Greater Richmond Transit Company
- Station Building
- Pick Up/Drop-Off
- ADA Parking
- Parking

Figure PP-20
Staples Mill Road
Station
Vicinity Map



0 100 200
Feet
1 inch = 200 feet
@ 8.5 x 11 inches

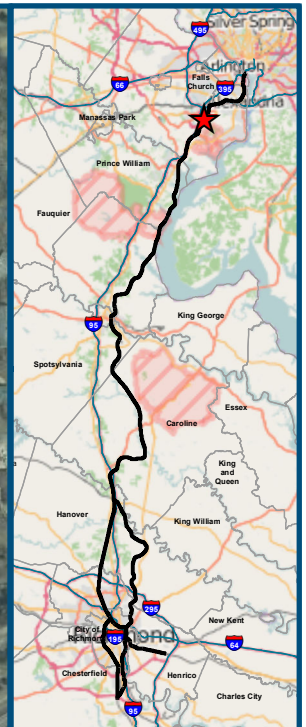
Projection: Lambert Conformal Conic
State Plane Virginia North FIPS 4501 Feet
North American Datum of 1983

2013 VGIN VBMP Aerial Imagery

Legend

- Amtrak Station
- Existing Track
- Station Site
- Greater Richmond Transit Company
- Megabus Intercity Bus
- Accessible Path
- Station Building
- ADA Parking
- Parking
- Platform with Shelter

Figure PP-23
Richmond Main
Street Station
Vicinity Map



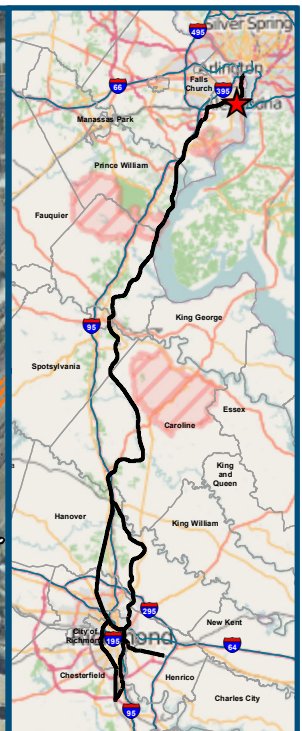
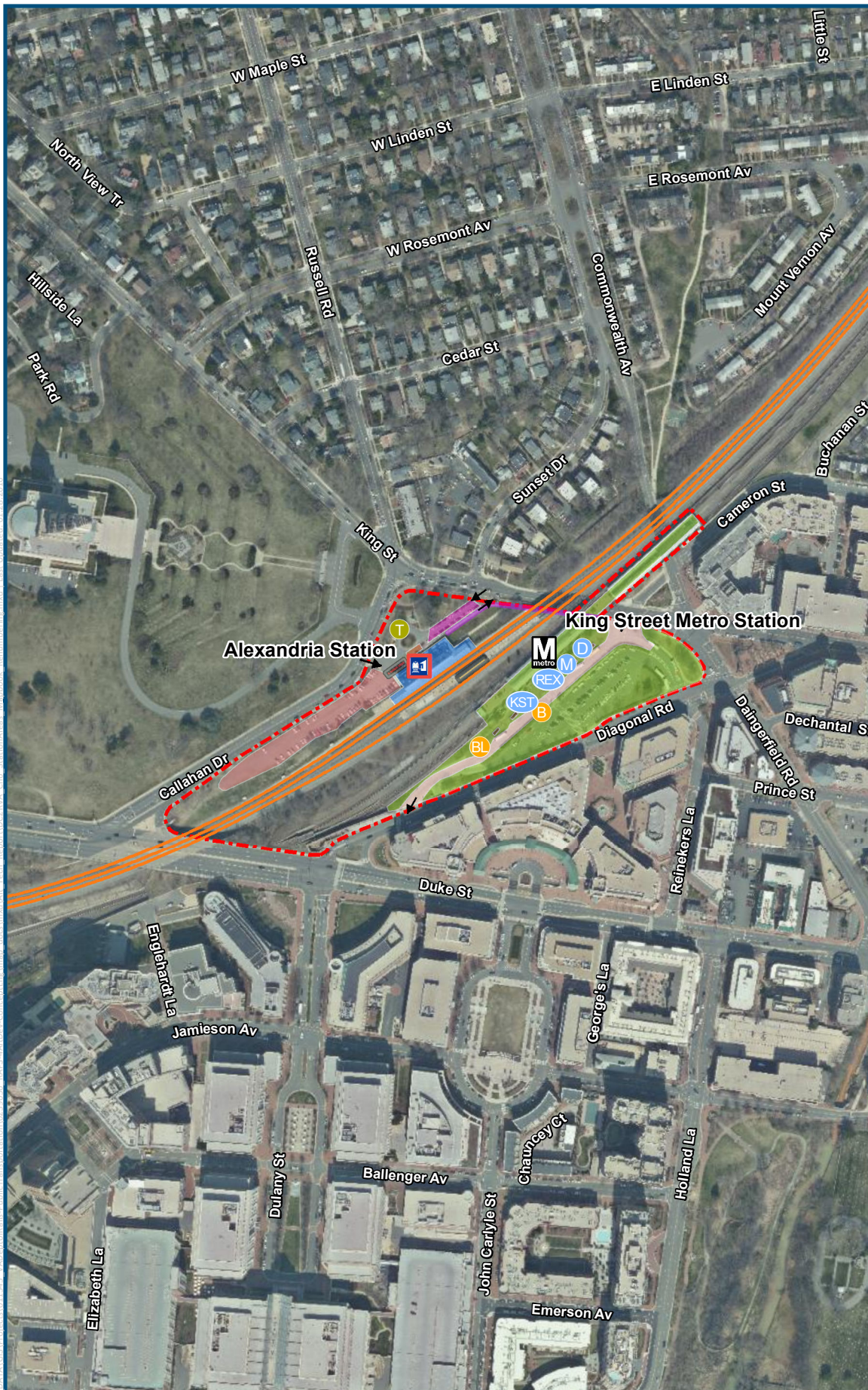
Feet
1 inch = 400 feet
@ 8.5 x 11 inches
Projection: Lambert Conformal Conic
State Plane Virginia North FIPS 4501 Feet
North American Datum of 1983

2013 VGIN VBMP Aerial Imagery

Legend

- VRE/WMATA Station
- Existing Track
- Station Site
- Bike Locker
- PRTC OmniRide
- Bike Parking
- Fairfax Connector
- Greyhound
- Metro Bus
- Accessible Path
- Aerial Walkway
- Buses
- ADA Parking
- Parking Garage
- Platform
- WMATA

Figure PP-29
Franconia-Springfield Metro Station
Vicinity Map

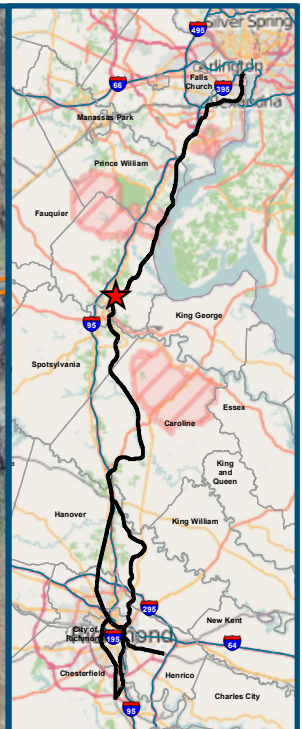
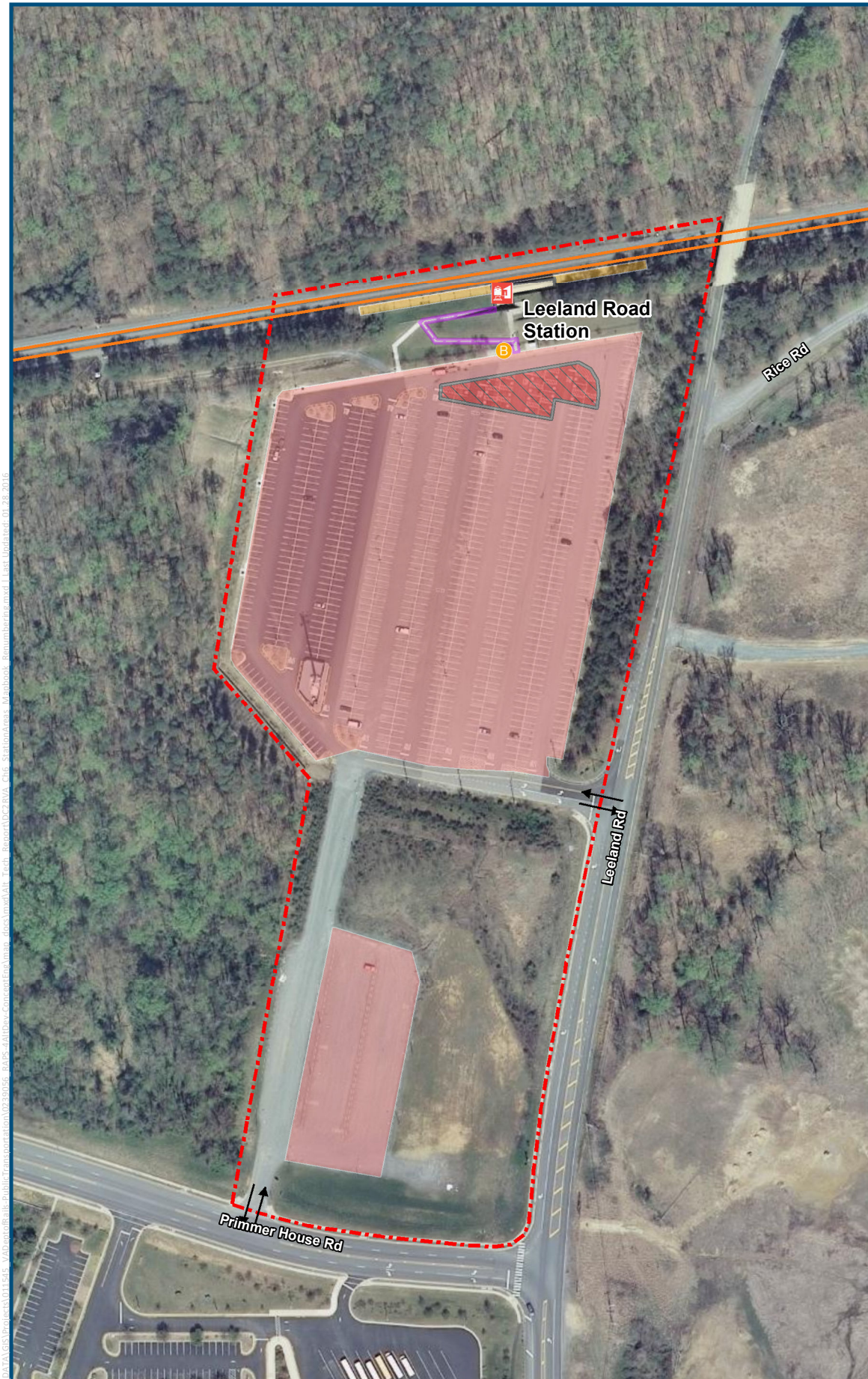


Feet
1 inch = 400 feet
@ 8.5 x 11 inches
Projection: Lambert Conformal Conic
State Plane Virginia North FIPS 4501 Feet
North American Datum of 1983

2013 VGIN VBMP Aerial Imagery

- Legend**
- Amtrak/VRE Station
 - Metrorail Station
 - Existing Track
 - Station Site
 - Bike Locker
 - Bike Parking
 - Taxi
 - Dash
 - King Street Trolley
 - Metro Bus
 - Richmond Highway Express
 - Accessible Path
 - Bus Stop
 - Buses
 - Station Building
 - Pick Up/Drop-Off
 - ADA Parking
 - Parking
 - Short-Term Parking
 - Platform with Shelter
 - WMATA

Figure PP-4
Alexandria Station
Vicinity Map



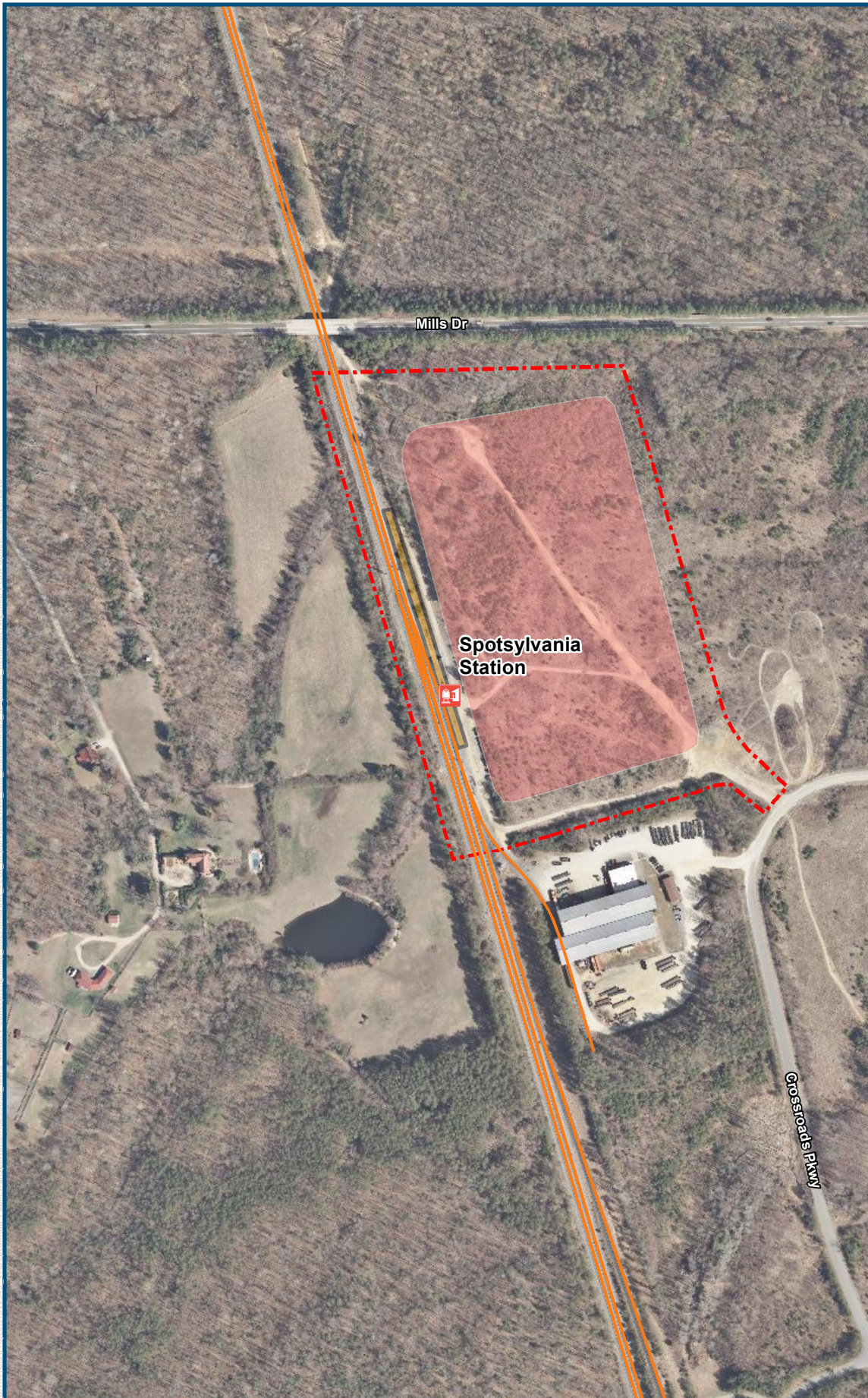
Feet
1 inch = 200 feet
@ 8.5 x 11 inches
Projection: Lambert Conformal Conic
State Plane Virginia North FIPS 4501 Feet
North American Datum of 1983

2013 VGIN VBMP Aerial Imagery

Legend

- VRE Station
- Existing Track
- Station Site
- Bike Parking
- Accessible Path
- ADA Parking
- Parking
- Shelter
- Platform






**Figure PP-41
Leeland Road
Station
Vicinity Map**



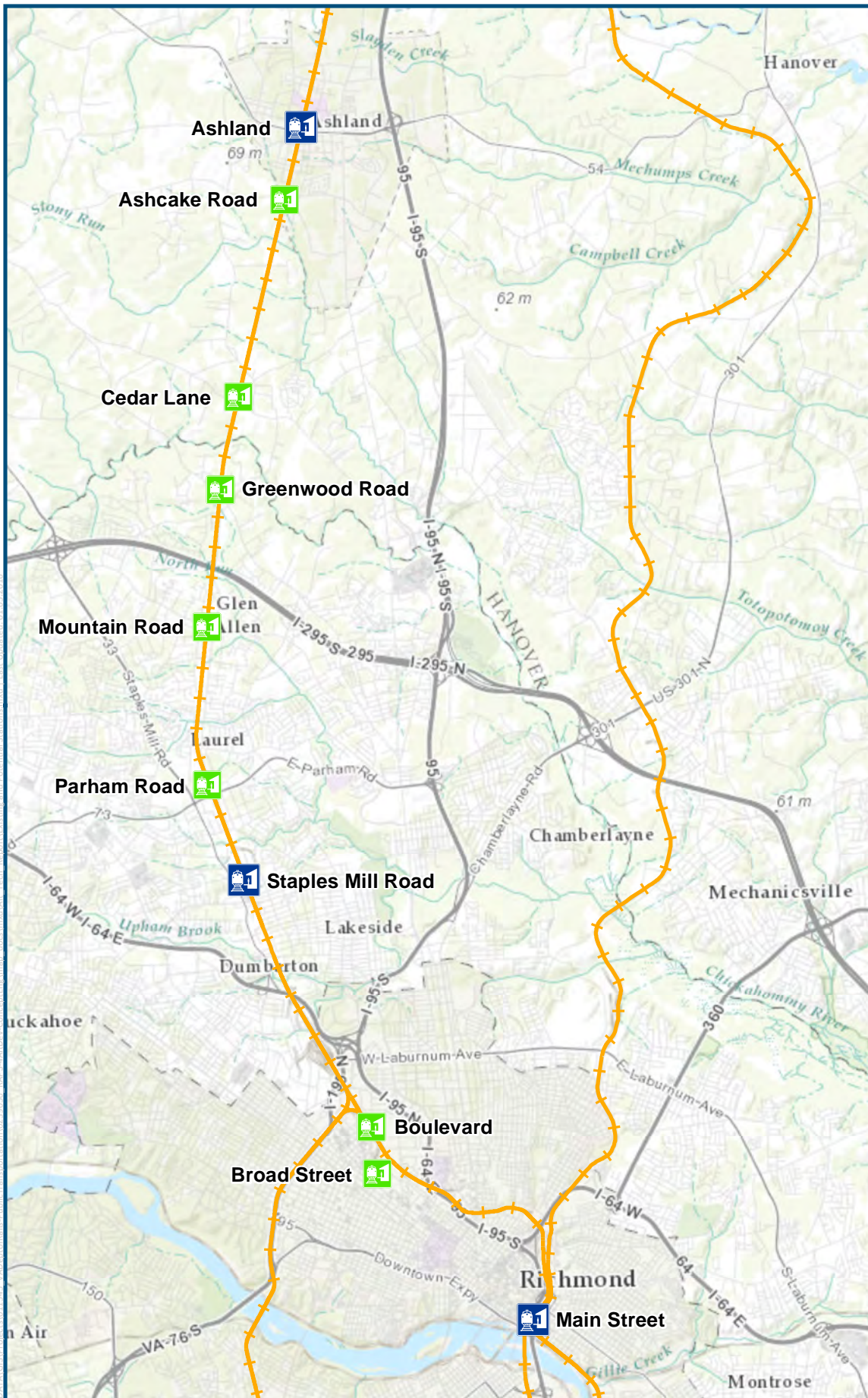
Feet
1 inch = 400 feet
@ 8.5 x 11 inches
Projection: Lambert Conformal Conic
State Plane Virginia North FIPS 4501 Feet
North American Datum of 1983

2013 VGIN VBMP Aerial Imagery

Legend

-  VRE Station
-  Existing Track
-  Station Site
-  Parking
-  Platform with Shelter

**Figure PP-44
Spotsylvania
Station
Vicinity Map**



0 1 2
Miles
1 inch = 2 miles
@ 8.5 x 11 inches
Projection: Lambert Conformal Conic
State Plane Virginia North FIPS 4501 Feet
North American Datum of 1983
Basemap Source: ESRI

Legend




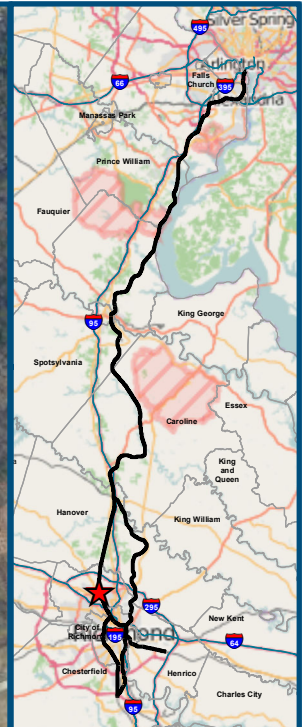
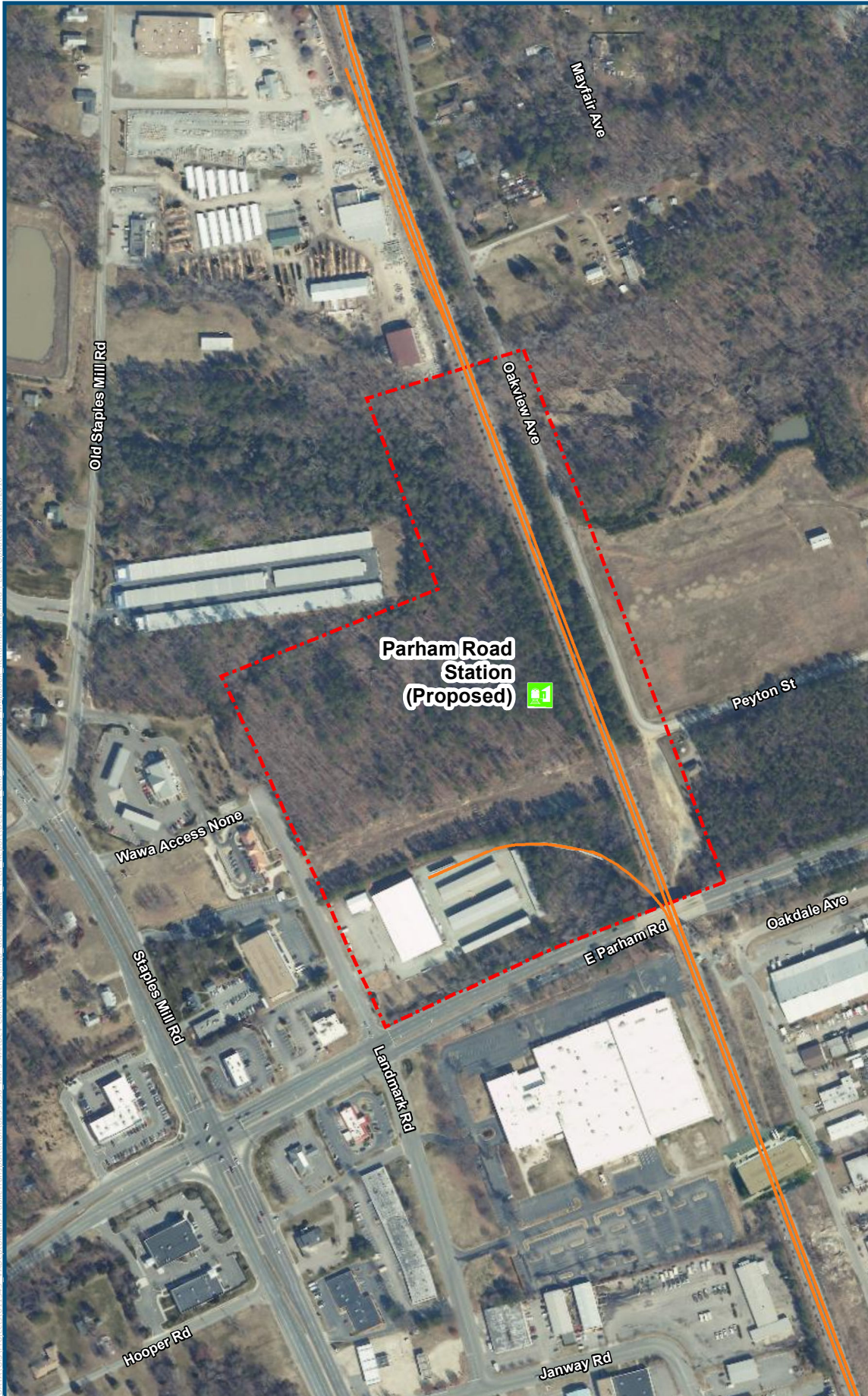
-  Existing Track
-  Existing Amtrak Station
-  Potential Amtrak Station




Figure PP-46
Existing and
Potential Stations
Richmond North



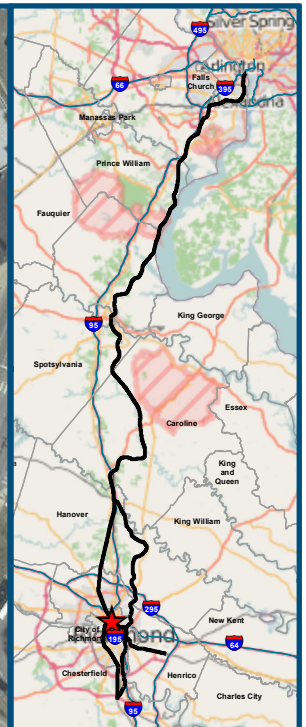
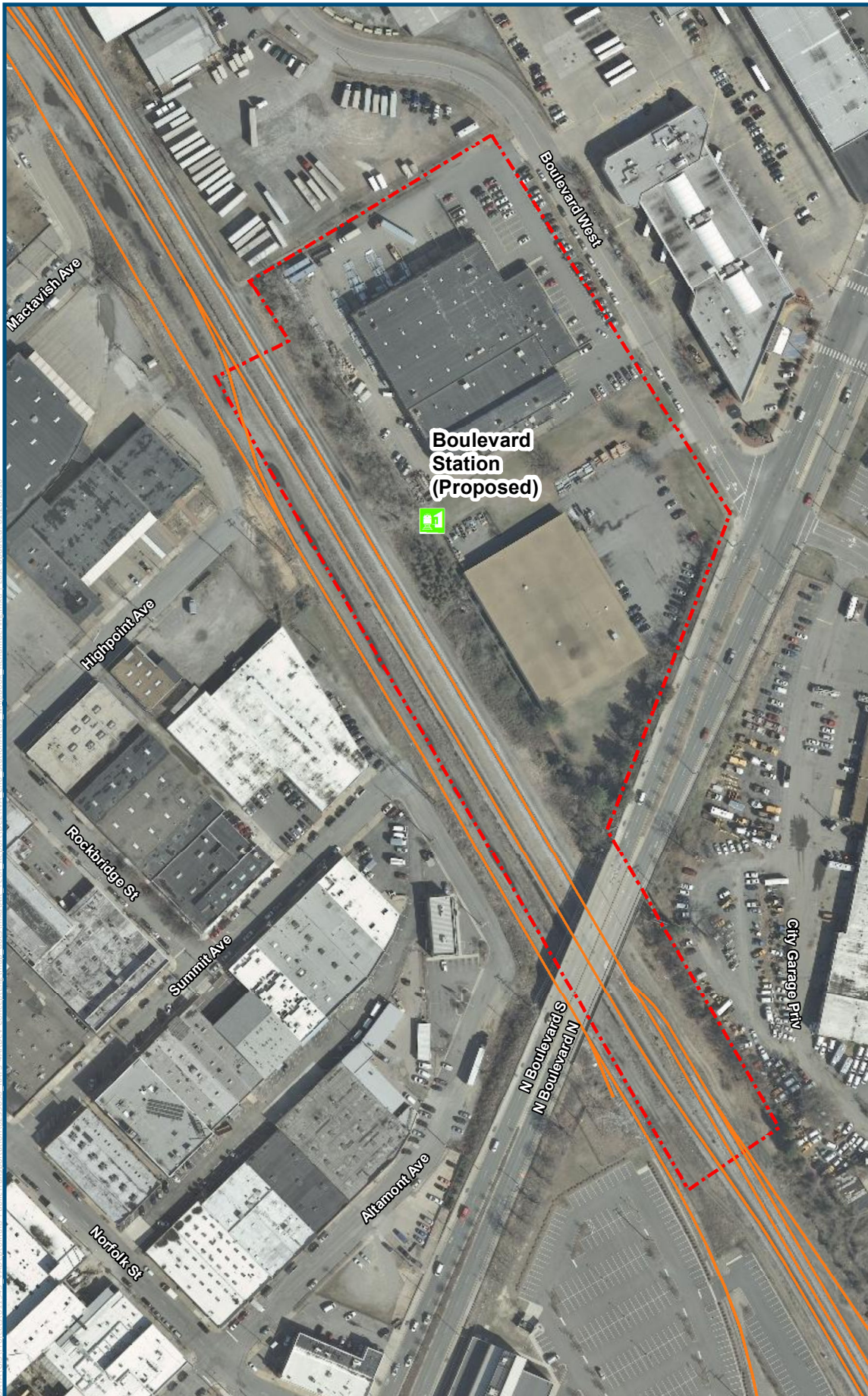
Feet
1 inch = 400 feet
@ 8.5 x 11 inches
Projection: Lambert Conformal Conic
State Plane Virginia North FIPS 4501 Feet
North American Datum of 1983

2013 VGIN VBMP Aerial Imagery

Legend

-  Proposed Station
-  Existing Track
-  Station Site

**Figure PP-47
Parham Road
Station (proposed)
Vicinity Map**



0 100 200
Feet
1 inch = 200 feet
@ 8.5 x 11 inches

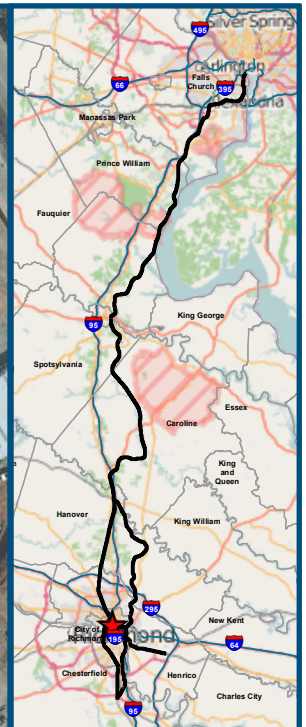
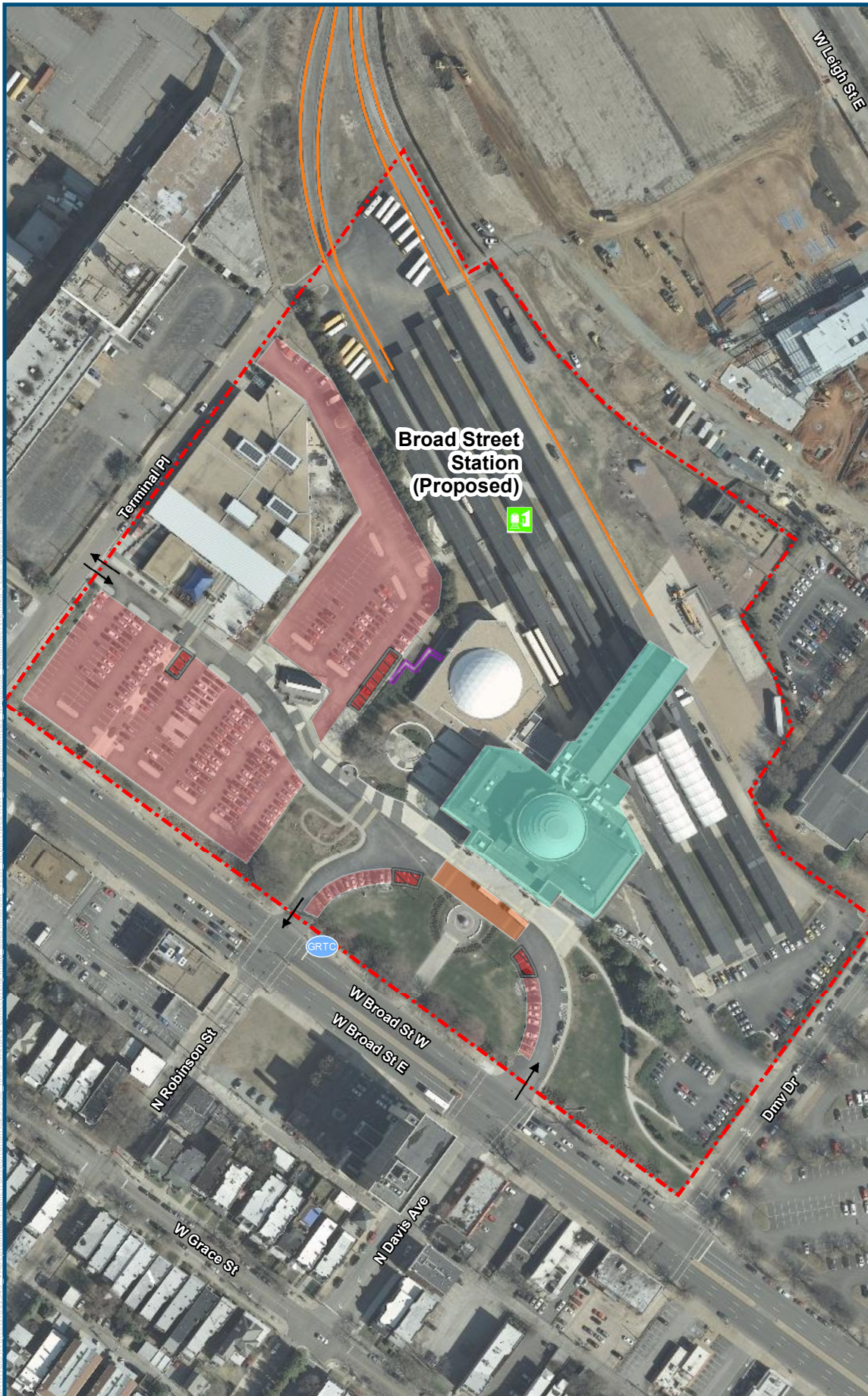
Projection: Lambert Conformal Conic
State Plane Virginia North FIPS 4501 Feet
North American Datum of 1983

2013 VGIN VBMP Aerial Imagery

Legend

-  Proposed Station
-  Existing Track
-  Station Site

Figure PP-48
Boulevard Station
(proposed)
Vicinity Map



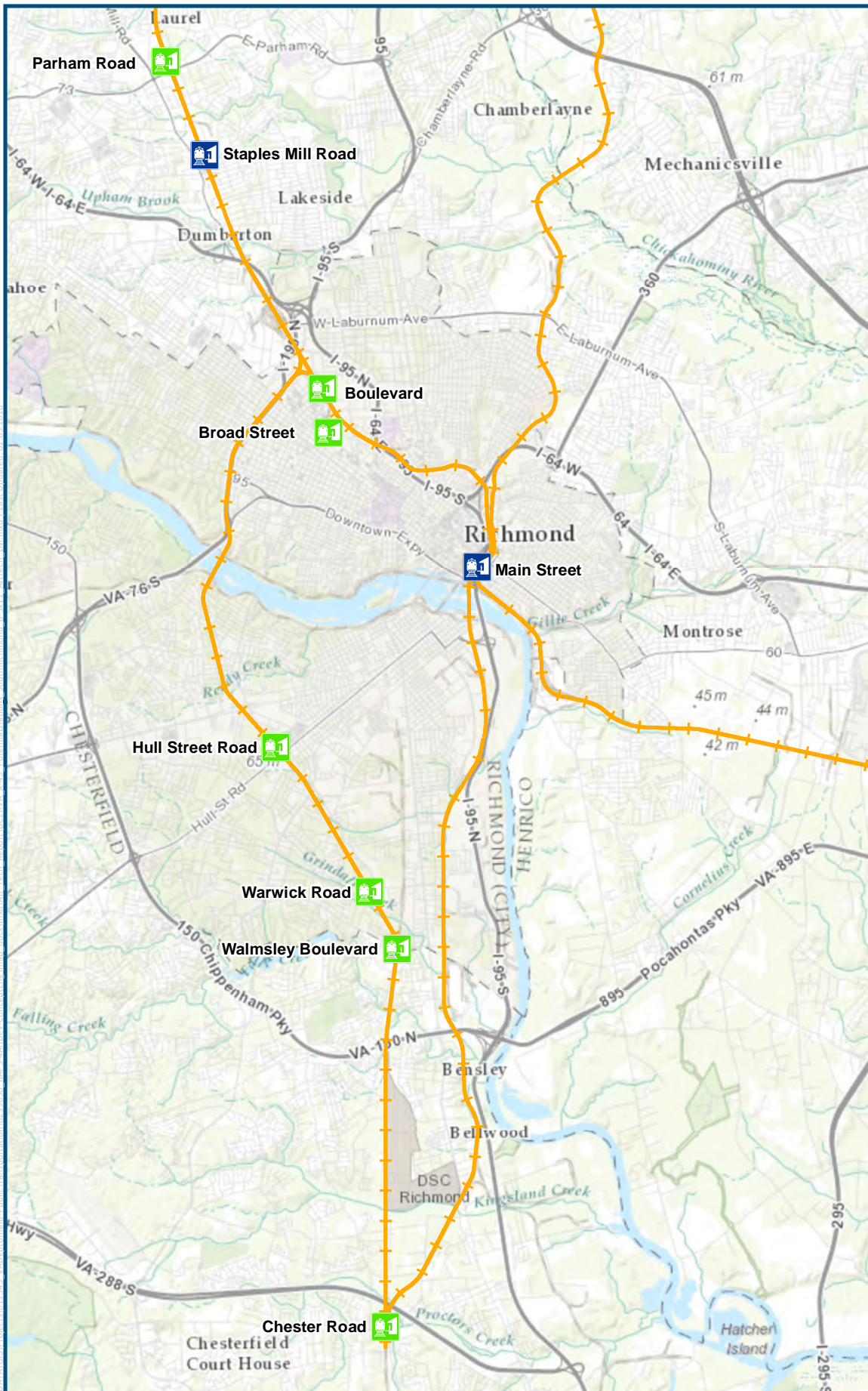
Feet
1 inch = 200 feet
@ 8.5 x 11 inches
Projection: Lambert Conformal Conic
State Plane Virginia North FIPS 4501 Feet
North American Datum of 1983

2013 VGIN VBMP Aerial Imagery

Legend

- Proposed Station
- Existing Track
- Station Site
- Greater Richmond Transit Company
- Accessible Path
- Science Museum
- Pick Up/Drop-Off
- ADA Parking
- Parking

Figure PP-51
Broad Street
Station (proposed)
Vicinity Map



0 1 2
Miles
1 inch = 2 miles
@ 8.5 x 11 inches
Projection: Lambert Conformal Conic
State Plane Virginia North FIPS 4501 Feet
North American Datum of 1983
Basemap: ESRI World Topographic Map

Legend




-  Existing Track
-  Existing Amtrak Station
-  Potential Amtrak Station

Figure PP-52
Existing and
Potential Stations
Richmond South