



# RAIL:

*MOVING AMERICA FORWARD*

***Who We Are***



U.S. Department of Transportation  
Federal Railroad Administration

# Our Focus

The mission of the Federal Railroad Administration (FRA) is to enable the safe, reliable, and efficient movement of people and goods for a strong America, now and in the future.

- Continuing a rigorous oversight and inspection program based on strategic use of data;
- Advancing proactive approaches for early identification and mitigation of risk; and
- Maximizing public benefits from capital investments and robust research, development, and technology program.



**VISION: RAIL–** *Moving America Forward*



U.S. Department of Transportation  
Federal Railroad Administration

January 3, 2018

FRA – INTERNAL COMMUNICATIONS & ENGAGEMENT



# Safety is our number one priority

## RAIL HAS NEVER BEEN SAFER

Every regulation issued and enforcement action taken is based on factual evidence and sound research. New records in railroad safety performance have been achieved four of the past five years.

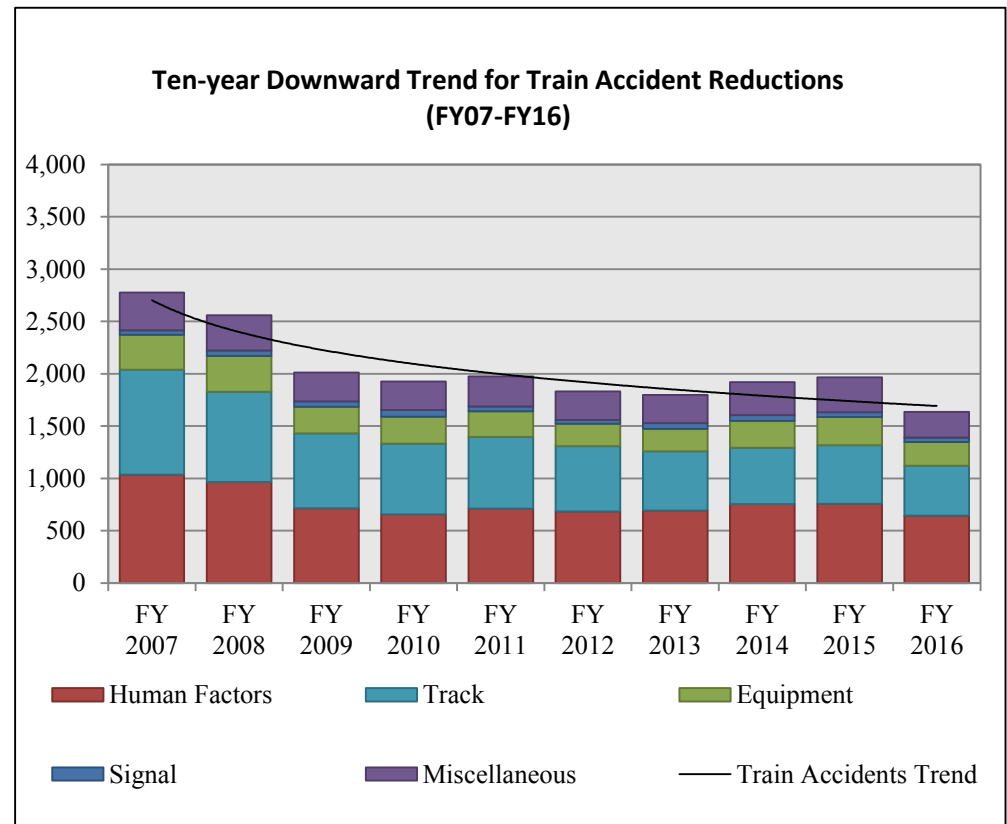
- Over the past decade, train accidents have declined 41 percent
- Highway-rail grade crossing collisions are down 29 percent
- And employee fatalities have been reduced by 31 percent



## Ten-Year Trend for Accident Reductions

\*Fiscal Year Representing Absolute Numbers

Source: FRA



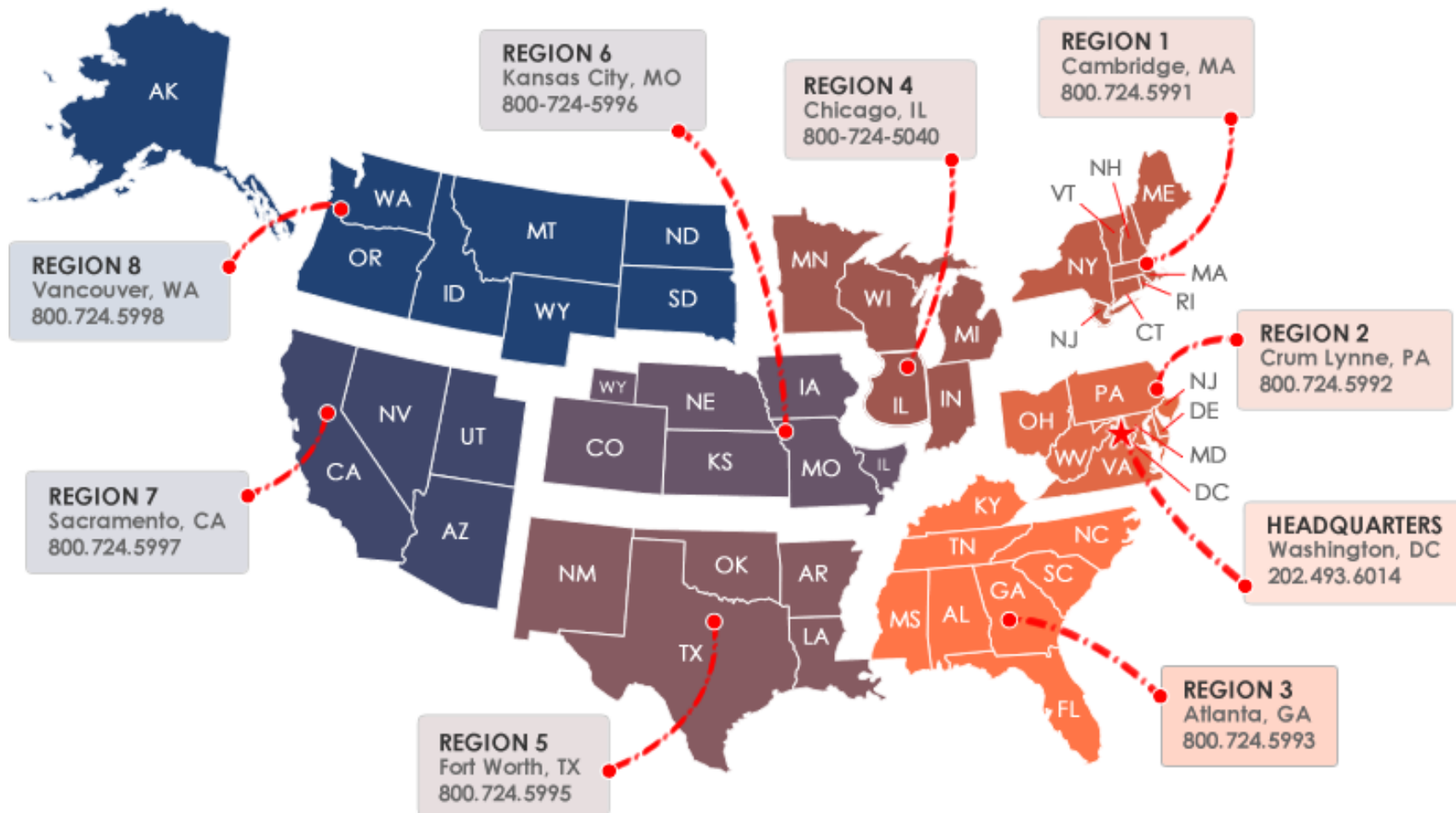
# ***Safety is our number one priority (cont'd)***

## **Significant Safety Implementations Over the Past 10 Years:**

- **Positive Train Control (PTC)** *(to be fully implemented by 2018)*
- **Highway-Rail Grade Crossing Program Enhancements**
- **HAZMATs Transport / HHFT / Tank Car Safety / CORTEX**
- **Risk Reduction / System Safety / Confidential Close Call Reporting System (C3RS)**
- **Passenger Equipment Safety Standards**
- **Control of Alcohol and Drug Use**
- **Hours of Service of Railroad Employees**
- **Railroad Bridge Safety Oversight**



# *Safety is our number one priority (cont'd)*



# Laying a Foundation for Higher Performing Rail

## OUR \$25 BILLION PORTFOLIO INCLUDES:

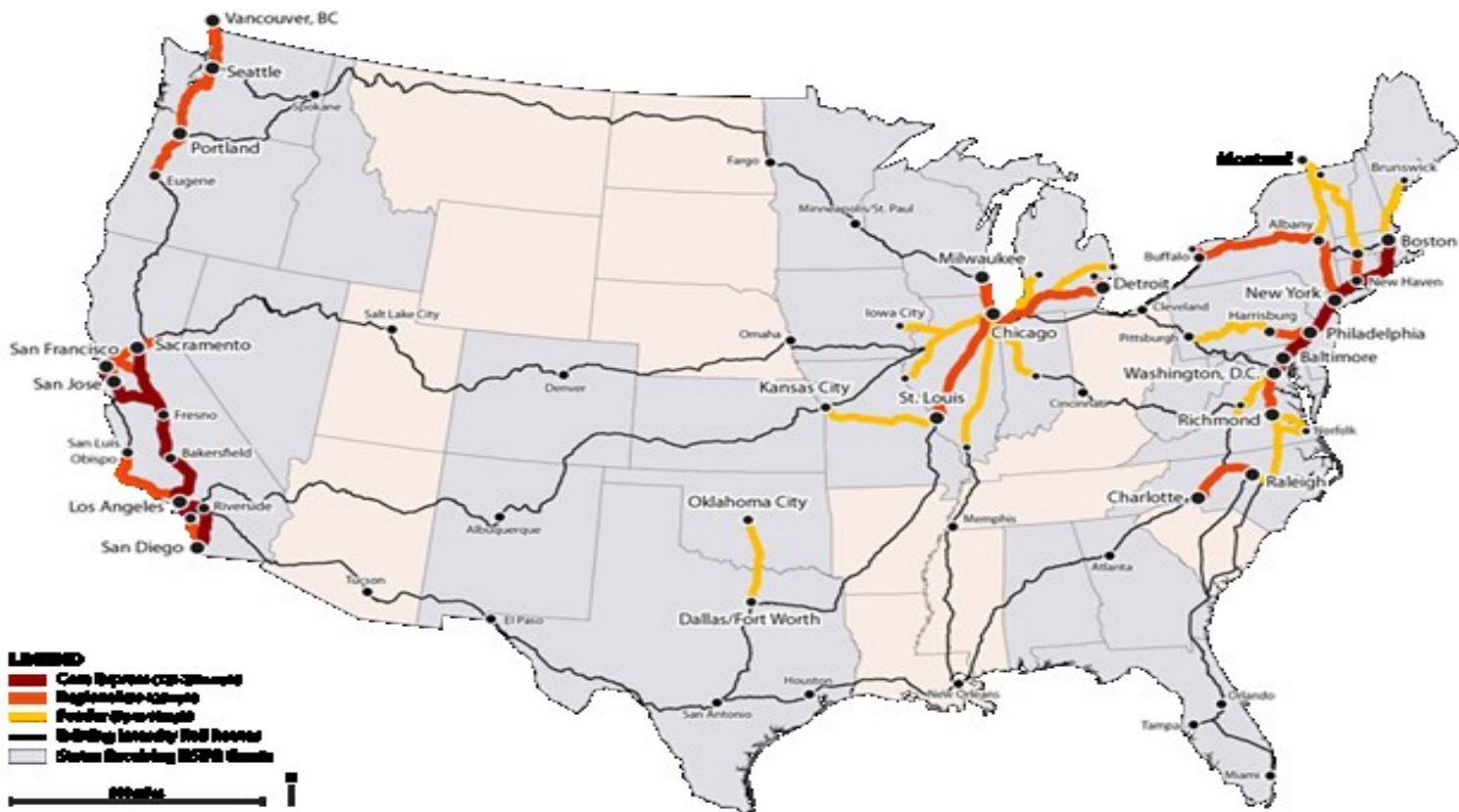
- Railroad Safety Technology Grants for PTC
- Railroad Safety Infrastructure Improvement Grants
- Railroad Safety Grants for the Safe of Energy Products by Rail
- Rail Line Relocation Grants\*
- Disaster Assistance Grants
- Amtrak Operating and Capital Grants\*
- Transportation Investment Generating Economic Recovery Grants (TIGER)
- Research, Development, and Technology
- High-Speed Intercity Passenger Rail (HSIPR) Grants
- Fixing America's Surface Transportation (FAST) Act

\* *The Fixing America's Surface Transportation (FAST) Act modifies these grant programs.*



## ***Laying a Foundation for Higher Performing Rail (cont'd)***

# The High-Speed Intercity Passenger Rail Program



U.S. Department of Transportation  
Federal Railroad Administration

January 3, 2018

FRA – INTERNAL COMMUNICATIONS &amp; ENGAGEMENT

# *Laying a Foundation for Higher Performing Rail (cont'd)*

## The High-Speed Intercity Passenger Rail Program

### ***Northeast Corridor (NEC) FUTURE***

- The FRA launched NEC FUTURE in February 2012
- NEC is a comprehensive planning effort to define, evaluate, and prioritize future investments on the Northeast Corridor for passenger rail (intercity and regional/ commuter).
- The NEC is between Boston – New York – Washington, DC.
- It's the most heavily trafficked rail corridor in the country.



### **OBJECTIVE:**

- Develop a long-term vision for passenger rail on the NEC with an incremental approach to achieve that vision, and;
- Near-term investment plans for accommodating the growing demand for rail travel in the region.

Federally-funded planning grants are laying the foundation for future investments that will continue to reduce the maintenance backlog and bring the NEC back to a state of good repair.





# Laying a Foundation for Higher Performing Rail (cont'd)

## ***FRA's Role Related to AMTRAK, Rail Passenger Service***

**Amtrak is congressionally chartered**  
(*Rail Passenger Service Act of 1970*)

- For-profit corporation; independent for purposes of day-to-day operations
- Federal government exercises long term control
- Reliant, in part, on annual federal and state appropriations



**Amtrak operates a nationwide passenger rail network, including:**

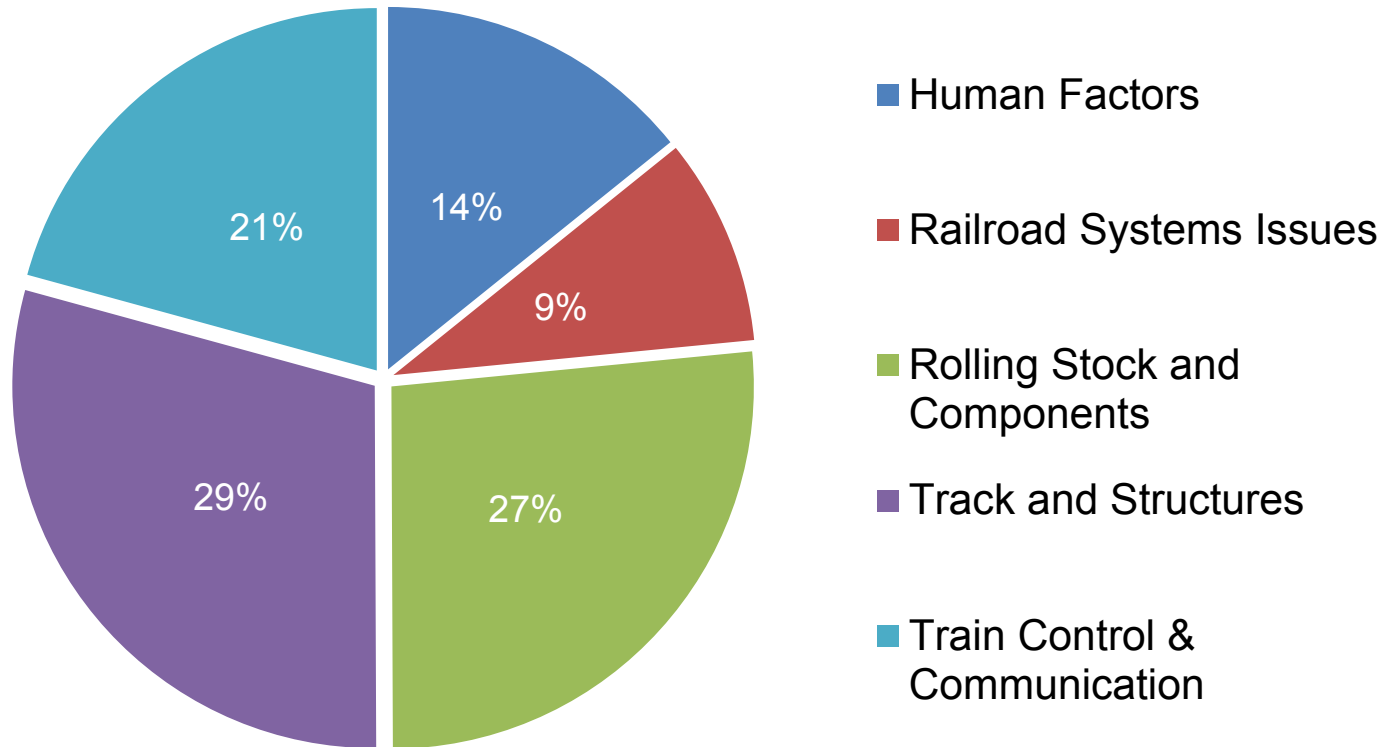
- Higher-speed, high frequency Northeast Corridor services
- State supported short distance corridor service in heavily populated regions
- Long distance services connecting rural areas and distant population centers

### **FRA's Role**

- Administers Amtrak's Grants for operating, capital, and debt obligations
- Oversees Amtrak's performance; inspects safety compliance; and provides technical assistance and standards

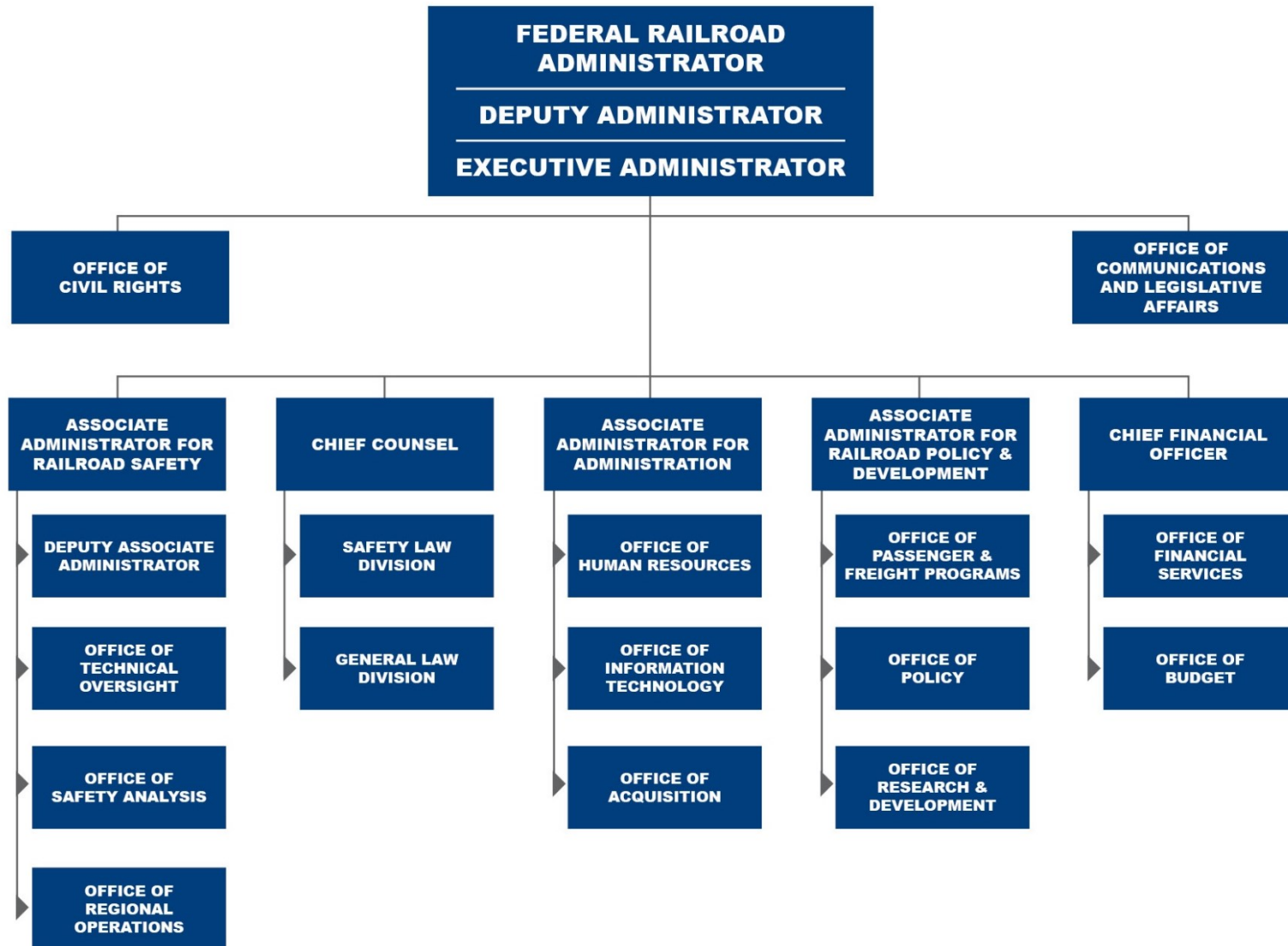


# *Investments in Research and Development*



- Since 2006, we have steadily invested nearly \$35 million in research and development annually.
- The FRA Transportation Technology Center (TTC) in Pueblo, Colorado has played an important part in research, development, and testing of rail infrastructure and equipment.





# Guiding Principles

- **INTEGRITY:** The highest standards of ethical conduct guide our stewardship of the public's trust and resources.
- **EXCELLENCE:** We will empower employees to focus time and resources on data-driven, cost-effective solutions that promote FRA mission accomplishments. We seek ongoing development of our knowledge base and skills. We exhibit professional behavior at all times.
- **TRANSPARENCY & ACCOUNTABILITY:** Senior leadership will engage employees in robust dialogue and constructive communication. We will embrace open decision-making. Our reward and recognition system will hold each of us responsible for our performance.
- **INNOVATION:** We will become an enterprising, resilient organization that invests in the future, as it streamlines and improves current operations.
- **ENGAGEMENT:** We will engage our stakeholders for creative problem solving and development of effective policies, programs, technology, and investments.
- **SAFETY:** We will strive to ensure the safety of our employees, the public, and the rail industry workforce.







# CONTACT US

Federal Railroad Administration  
1200 New Jersey Avenue, SE  
Washington, DC 20590

For more information visit us at  
**[www.fra.dot.gov](http://www.fra.dot.gov)**



Connect with us **USDOTFRA**



U.S. Department of Transportation  
**Federal Railroad Administration**