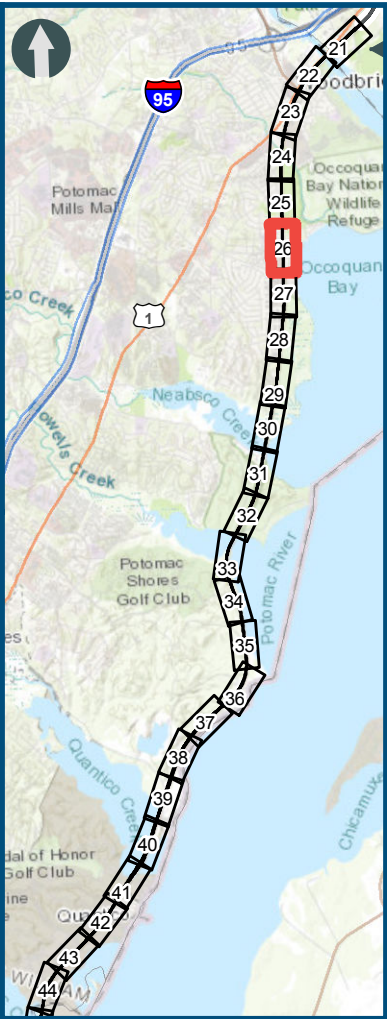
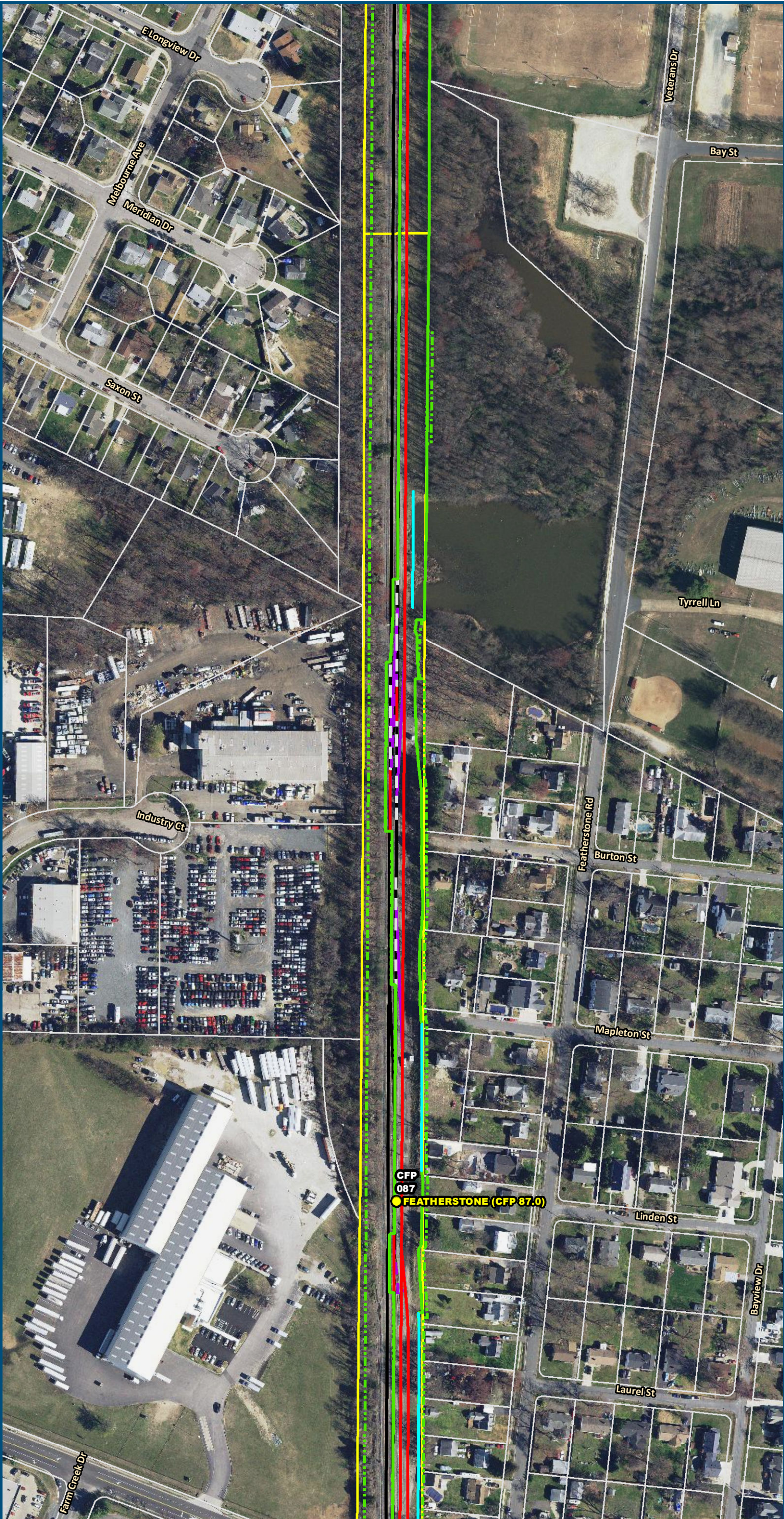


\\dlsmain\GIS\_DATA\GIS\Projects\011545\_VA\Dev\Concept\Eng\map\_docs\mxd\FEIS\PreA\Mapbook\DC2RVA\_FEISMapbook\_Final\_11x17.mxd | Last Updated: 03.13.2019



0 100 200  
Feet  
1 inch = 200 feet  
@ 11 x 17 inches  
Projection: Lambert Conformal Conic  
State Plane Virginia North FIPS 4501 Feet  
North American Datum of 1983  
Imagery/Basemap Source: 2015-2017 VGIN  
Aerial Imagery; ESRI World Transportation

Legend

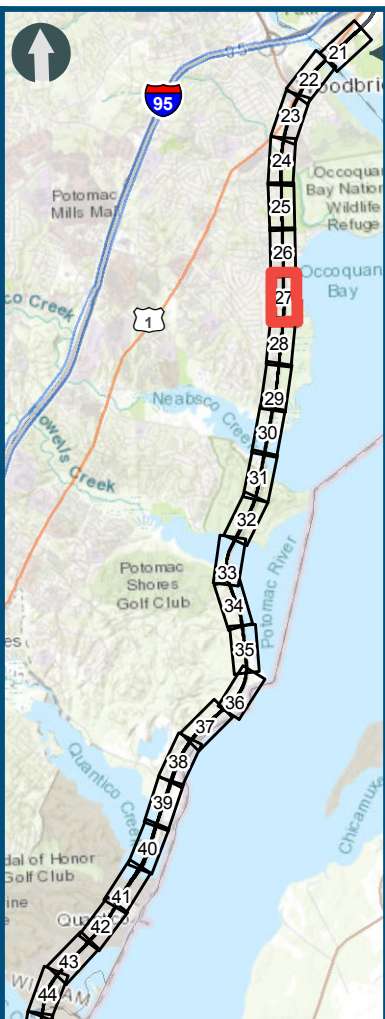
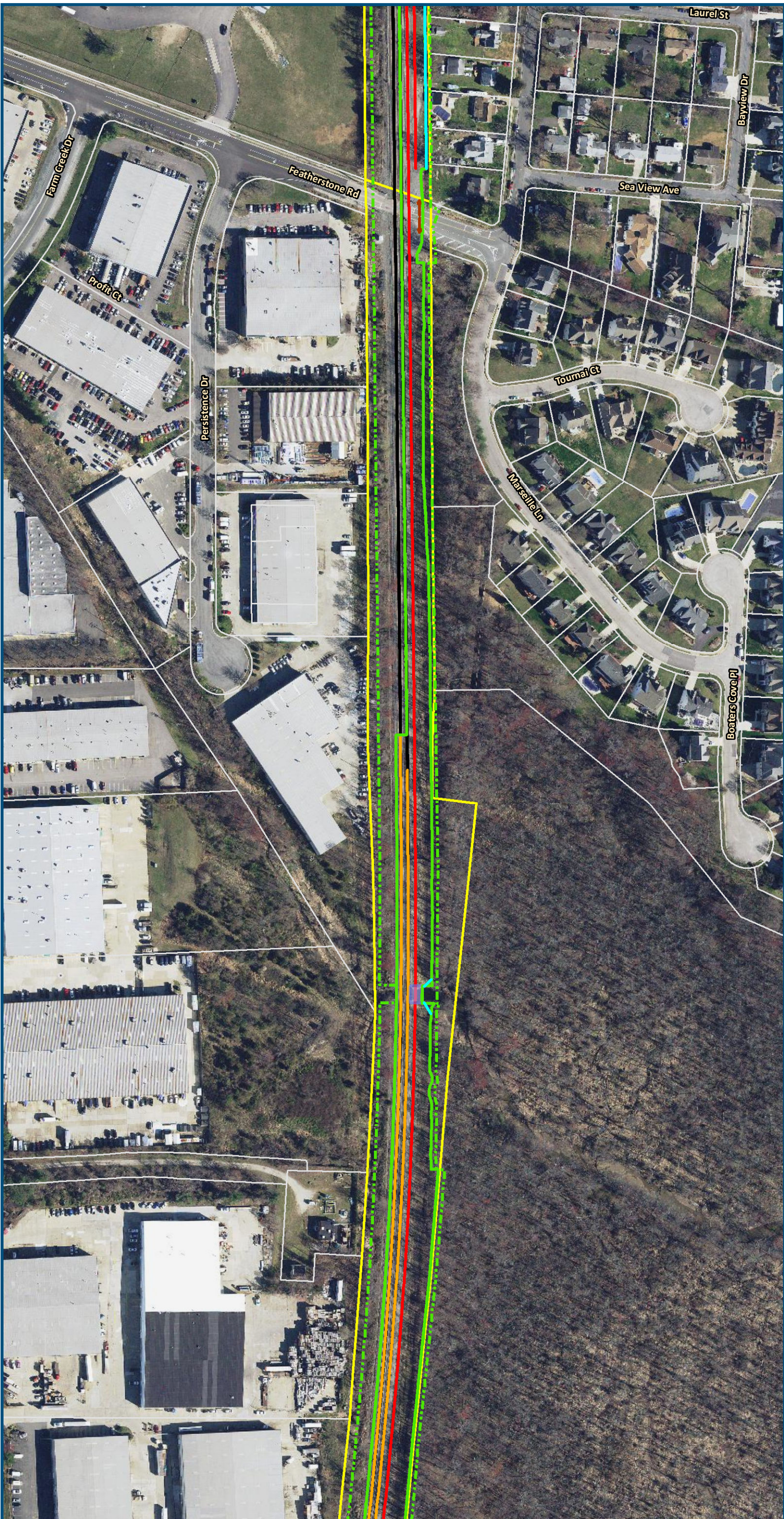
- Permanent Limits of Disturbance
- Temporary Limits of Disturbance
- CSXT Mileposts
- Control Point/Interlocking
- Track - Existing
- Track - Improve Existing
- Track - Proposed
- Track - Proposed by others
- Track - Remove
- Crossover/Turnout - Proposed
- Crossover/Turnout - Proposed by others
- Crossover/Turnout - Remove
- Retaining Walls
- Retaining Walls - Proposed by others
- Bridge
- Bridge - Proposed by others
- Roadway
- Roadway - Proposed by others
- Edge of Pavement
- Roadway Centerline
- Median Separators
- Gate/Quad Gate
- Locking Gate
- Crossing - Closure
- Crossing - Grade Separate
- Crossing - Four-Quadrant Gate
- Crossing - Gates with Center Median Treatment
- Crossing - Locking Gate (Private)
- SWM Facilities
- Drainage Culvert Crossings
- Drainage Directional Arrows
- Stations
- Station Platform - Existing
- Station Platform - Proposed
- Station Platform - Proposed by others
- Station Platform - Remove
- Building/Structure
- CSXT ROW (County Parcel Data)
- City/County Parcels
- City/County Boundary

Preferred Alternative  
Mapbook

Sheet 26 of 217



\\dlsmain\GIS\_DATA\GIS\Projects\011545\_VA Dept of Rail-Public Transportation\0239056\_RAPS-4A\Dev-Concept\Eng\map\_docs\mxd\FEIS\PreA\Mapbook\DC2RVA\_FEISMapbook\_Final\_11x17.mxd | Last Updated: 03.13.2019



0 100 200  
Feet  
1 inch = 200 feet  
@ 11 x 17 inches  
Projection: Lambert Conformal Conic  
State Plane Virginia North FIPS 4501 Feet  
North American Datum of 1983  
Imagery/Basemap Source: 2015-2017 VGIN  
Aerial Imagery; ESRI World Transportation

#### Legend

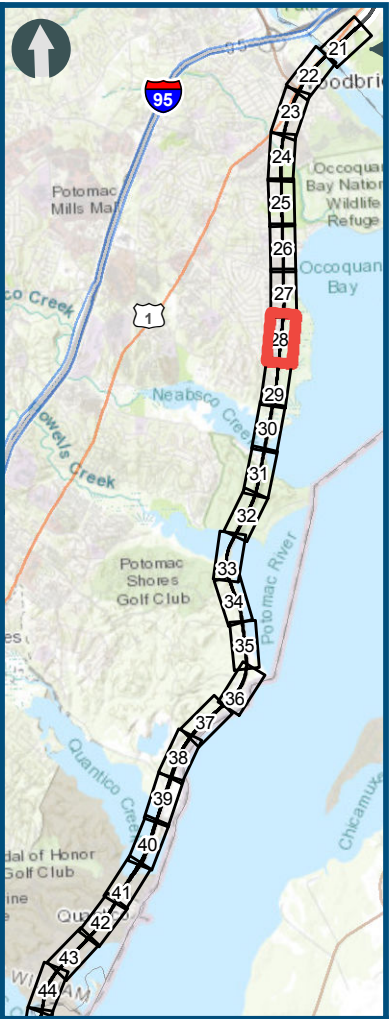
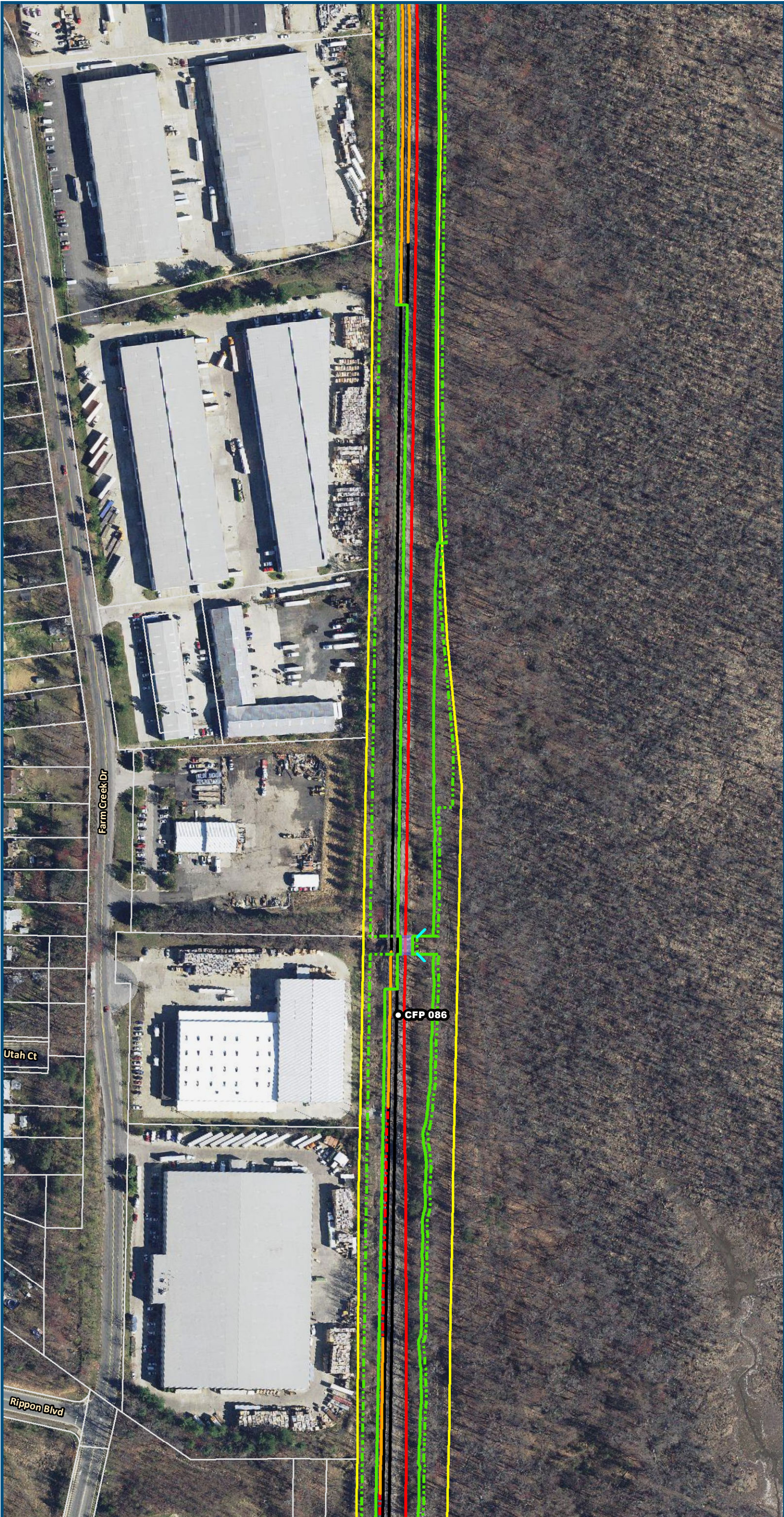
- Permanent Limits of Disturbance
- Temporary Limits of Disturbance
- CSXT Mileposts
- Control Point/Interlocking
- Track - Existing
- Track - Improve Existing
- Track - Proposed
- Track - Proposed by others
- Track - Remove
- Crossover/Turnout - Proposed
- Crossover/Turnout - Proposed by others
- Crossover/Turnout - Remove
- Retaining Walls
- Retaining Walls - Proposed by others
- Bridge
- Bridge - Proposed by others
- Roadway
- Roadway - Proposed by others
- Edge of Pavement
- Roadway Centerline
- Median Separators
- Gate/Quad Gate
- Locking Gate
- Crossing - Closure
- Crossing - Grade Separate
- Crossing - Four-Quadrant Gate
- Crossing - Gates with Center Median Treatment
- Crossing - Locking Gate (Private)
- SWM Facilities
- Drainage Culvert Crossings
- Drainage Directional Arrows
- Stations
- Station Platform - Existing
- Station Platform - Proposed
- Station Platform - Proposed by others
- Station Platform - Remove
- Building/Structure
- CSXT ROW (County Parcel Data)
- City/County Parcels
- City/County Boundary

#### Preferred Alternative Mapbook

Sheet 27 of 217



\\dlsmain\GIS\_DATA\GIS\Projects\011545\_VA Dept of Rails-Public\Transportation\0239056\_RAPS-4\MapDev-Concept\Eng\map\_docs\mxd\FEIS\PreA\Mapbook\DC2RVA\_FEISMapbook\_Final\_11x17.mxd | Last Updated: 03.13.2019



0 100 200  
Feet  
1 inch = 200 feet  
@ 11 x 17 inches  
Projection: Lambert Conformal Conic  
State Plane Virginia North FIPS 4501 Feet  
North American Datum of 1983  
Imagery/Basemap Source: 2015-2017 VGIN  
Aerial Imagery; ESRI World Transportation

Legend

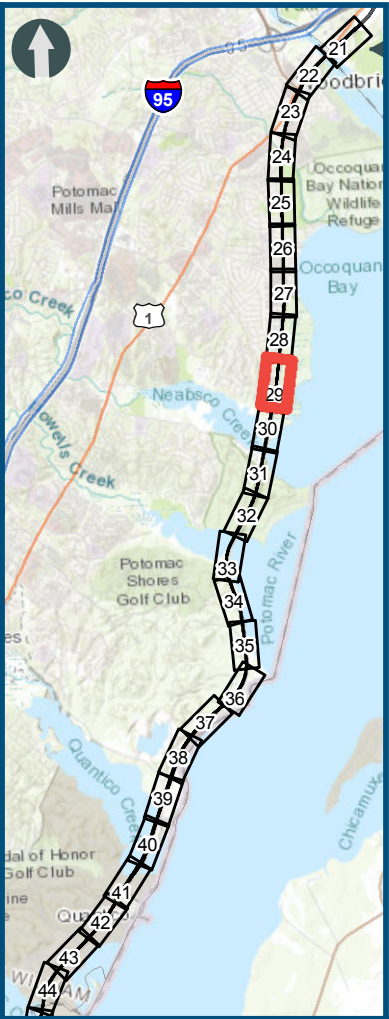
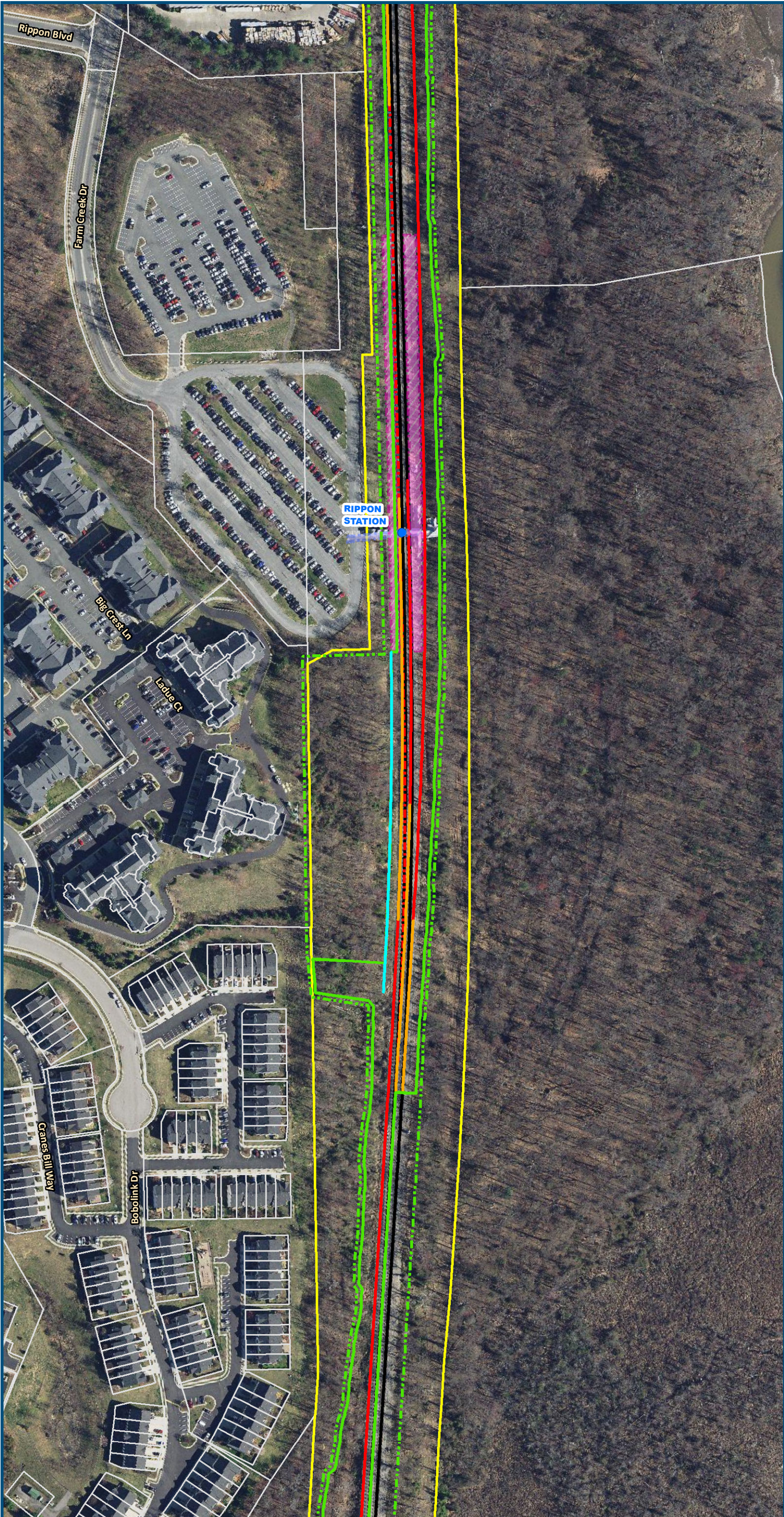
- Permanent Limits of Disturbance
- Temporary Limits of Disturbance
- CSXT Mileposts
- Control Point/Interlocking
- Track - Existing
- Track - Improve Existing
- Track - Proposed
- Track - Proposed by others
- Track - Remove
- Crossover/Turnout - Proposed
- Crossover/Turnout - Proposed by others
- Crossover/Turnout - Remove
- Retaining Walls
- Retaining Walls - Proposed by others
- Bridge
- Bridge - Proposed by others
- Roadway
- Roadway - Proposed by others
- Edge of Pavement
- Roadway Centerline
- Median Separators
- Gate/Quad Gate
- Locking Gate
- Crossing - Closure
- Crossing - Grade Separate
- Crossing - Four-Quadrant Gate
- Crossing - Gates with Center Median Treatment
- Crossing - Locking Gate (Private)
- SWM Facilities
- Drainage Culvert Crossings
- Drainage Directional Arrows
- Stations
- Station Platform - Existing
- Station Platform - Proposed
- Station Platform - Proposed by others
- Station Platform - Remove
- Building/Structure
- CSXT ROW (County Parcel Data)
- City/County Parcels
- City/County Boundary

Preferred Alternative  
Mapbook

Sheet 28 of 217



\\dlsmain\GIS\_DATA\GIS\Projects\011545\_VA Dept of Rail\Public Transportation\0239056\_RAPS-4\AI\Dev-Concept\Eng\map\_docs\mxd\FEIS\PreA\Mapbook\DC2RVA\_FEISMapbook\_Final\_11x17.mxd | Last Updated: 03.13.2019



0 100 200  
Feet  
1 inch = 200 feet  
@ 11 x 17 inches  
Projection: Lambert Conformal Conic  
State Plane Virginia North FIPS 4501 Feet  
North American Datum of 1983  
Imagery/Basemap Source: 2015-2017 VGIN  
Aerial Imagery; ESRI World Transportation

Legend

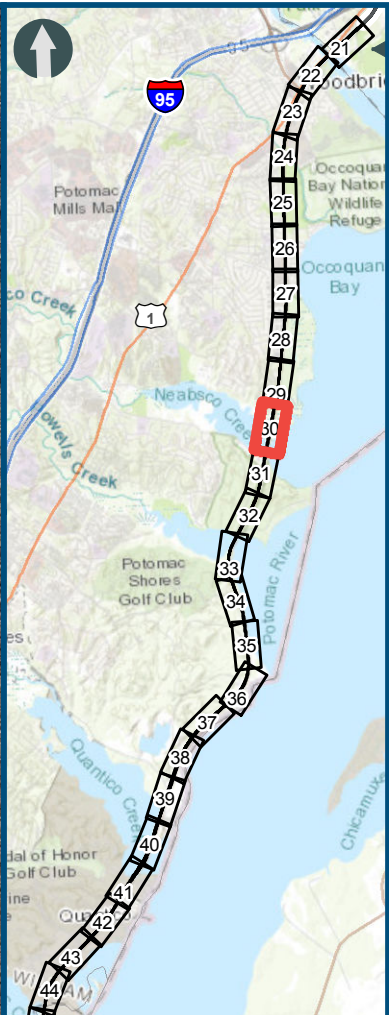
- Permanent Limits of Disturbance
- Temporary Limits of Disturbance
- CSXT Mileposts
- Control Point/Interlocking
- Track - Existing
- Track - Improve Existing
- Track - Proposed
- Track - Proposed by others
- Track - Remove
- Crossover/Turnout - Proposed
- Crossover/Turnout - Proposed by others
- Crossover/Turnout - Remove
- Retaining Walls
- Retaining Walls - Proposed by others
- Bridge
- Bridge - Proposed by others
- Roadway
- Roadway - Proposed by others
- Edge of Pavement
- Roadway Centerline
- Median Separators
- Gate/Quad Gate
- Locking Gate
- Crossing - Closure
- Crossing - Grade Separate
- Crossing - Four-Quadrant Gate
- Crossing - Gates with Center Median Treatment
- Crossing - Locking Gate (Private)
- SWM Facilities
- Drainage Culvert Crossings
- Drainage Directional Arrows
- Stations
- Station Platform - Existing
- Station Platform - Proposed
- Station Platform - Proposed by others
- Station Platform - Remove
- Building/Structure
- CSXT ROW (County Parcel Data)
- City/County Parcels
- City/County Boundary

Preferred Alternative  
Mapbook

Sheet 29 of 217



\\dlsmain\GIS\_DATA\GIS\Projects\011545\_VA Dept of Rail\Public Transportation\0239056\_RAPS-4\MapDev-Concept\Eng\map\_docs\mxd\FEIS\PreA\Mapbook\DC2RVA\_FEISMapbook\_Final\_11x17.mxd | Last Updated: 03.13.2019



0 100 200  
Feet  
1 inch = 200 feet  
@ 11 x 17 inches  
Projection: Lambert Conformal Conic  
State Plane Virginia North FIPS 4501 Feet  
North American Datum of 1983  
Imagery/Basemap Source: 2015-2017 VGIN  
Aerial Imagery; ESRI World Transportation

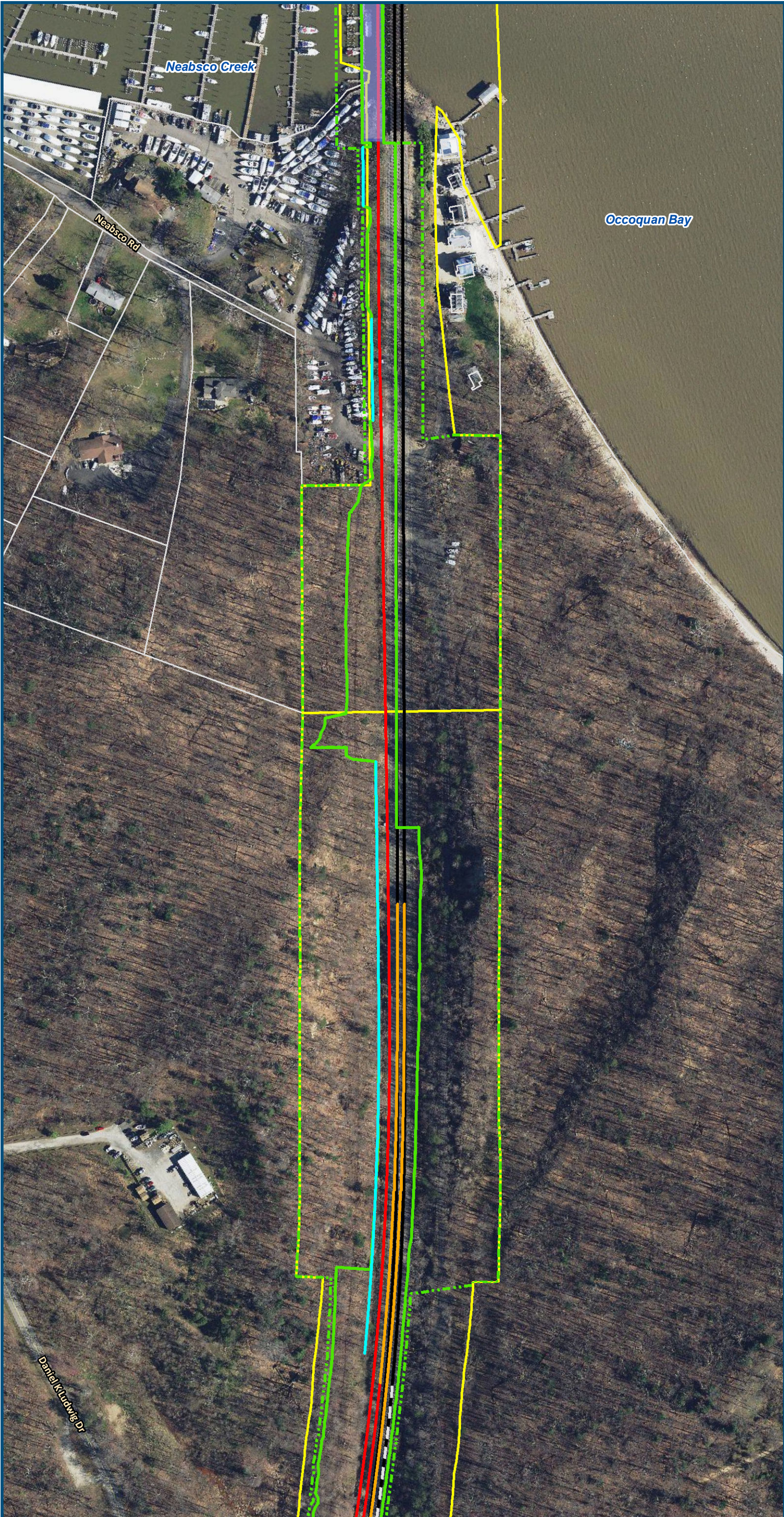
#### Legend

- Permanent Limits of Disturbance
- Temporary Limits of Disturbance
- CSXT Mileposts
- Control Point/Interlocking
- Track - Existing
- Track - Improve Existing
- Track - Proposed
- Track - Proposed by others
- Track - Remove
- Crossover/Turnout - Proposed
- Crossover/Turnout - Proposed by others
- Crossover/Turnout - Remove
- Retaining Walls
- Retaining Walls - Proposed by others
- Bridge
- Bridge - Proposed by others
- Roadway
- Roadway - Proposed by others
- Edge of Pavement
- Roadway Centerline
- Median Separators
- Gate/Quad Gate
- Locking Gate
- Crossing - Closure
- Crossing - Grade Separate
- Crossing - Four-Quadrant Gate
- Crossing - Gates with Center Median Treatment
- Crossing - Locking Gate (Private)
- SWM Facilities
- Drainage Culvert Crossings
- Drainage Directional Arrows
- Stations
- Station Platform - Existing
- Station Platform - Proposed
- Station Platform - Proposed by others
- Station Platform - Remove
- Building/Structure
- CSXT ROW (County Parcel Data)
- City/County Parcels
- City/County Boundary

#### Preferred Alternative Mapbook

Sheet 30 of 217





0 100 200  
Feet  
1 inch = 200 feet  
@ 11 x 17 inches  
Projection: Lambert Conformal Conic  
State Plane Virginia North FIPS 4501 Feet  
North American Datum of 1983  
Imagery/Basemap Source: 2015-2017 VGIN  
Aerial Imagery; ESRI World Transportation

- Legend**
- Permanent Limits of Disturbance
  - Temporary Limits of Disturbance
  - CSXT Mileposts
  - Control Point/Interlocking
  - Track - Existing
  - Track - Improve Existing
  - Track - Proposed
  - Track - Proposed by others
  - Track - Remove
  - Crossover/Turnout - Proposed
  - Crossover/Turnout - Proposed by others
  - Crossover/Turnout - Remove
  - Retaining Walls
  - Retaining Walls - Proposed by others
  - Bridge
  - Bridge - Proposed by others
  - Roadway
  - Roadway - Proposed by others
  - Edge of Pavement
  - Roadway Centerline
  - Median Separators
  - Gate/Quad Gate
  - Locking Gate
  - Crossing - Closure
  - Crossing - Grade Separate
  - Crossing - Four-Quadrant Gate
  - Crossing - Gates with Center Median Treatment
  - Crossing - Locking Gate (Private)
  - SWM Facilities
  - Drainage Culvert Crossings
  - Drainage Directional Arrows
  - Stations
  - Station Platform - Existing
  - Station Platform - Proposed
  - Station Platform - Proposed by others
  - Station Platform - Remove
  - Building/Structure
  - CSXT ROW (County Parcel Data)
  - City/County Parcels
  - City/County Boundary

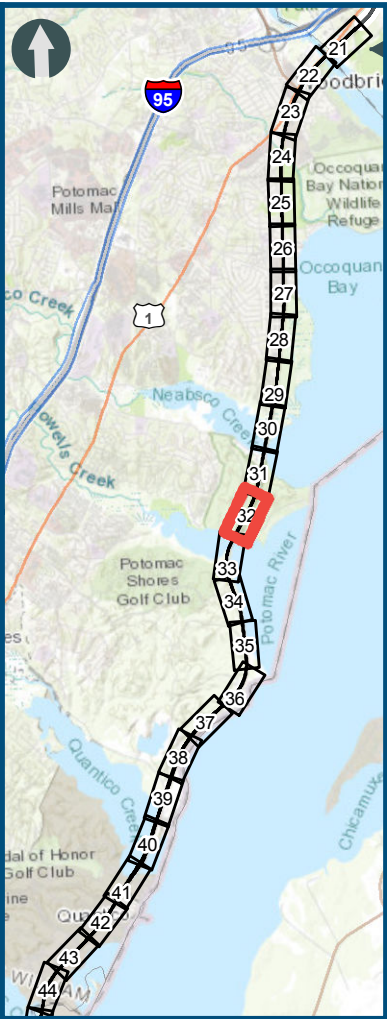
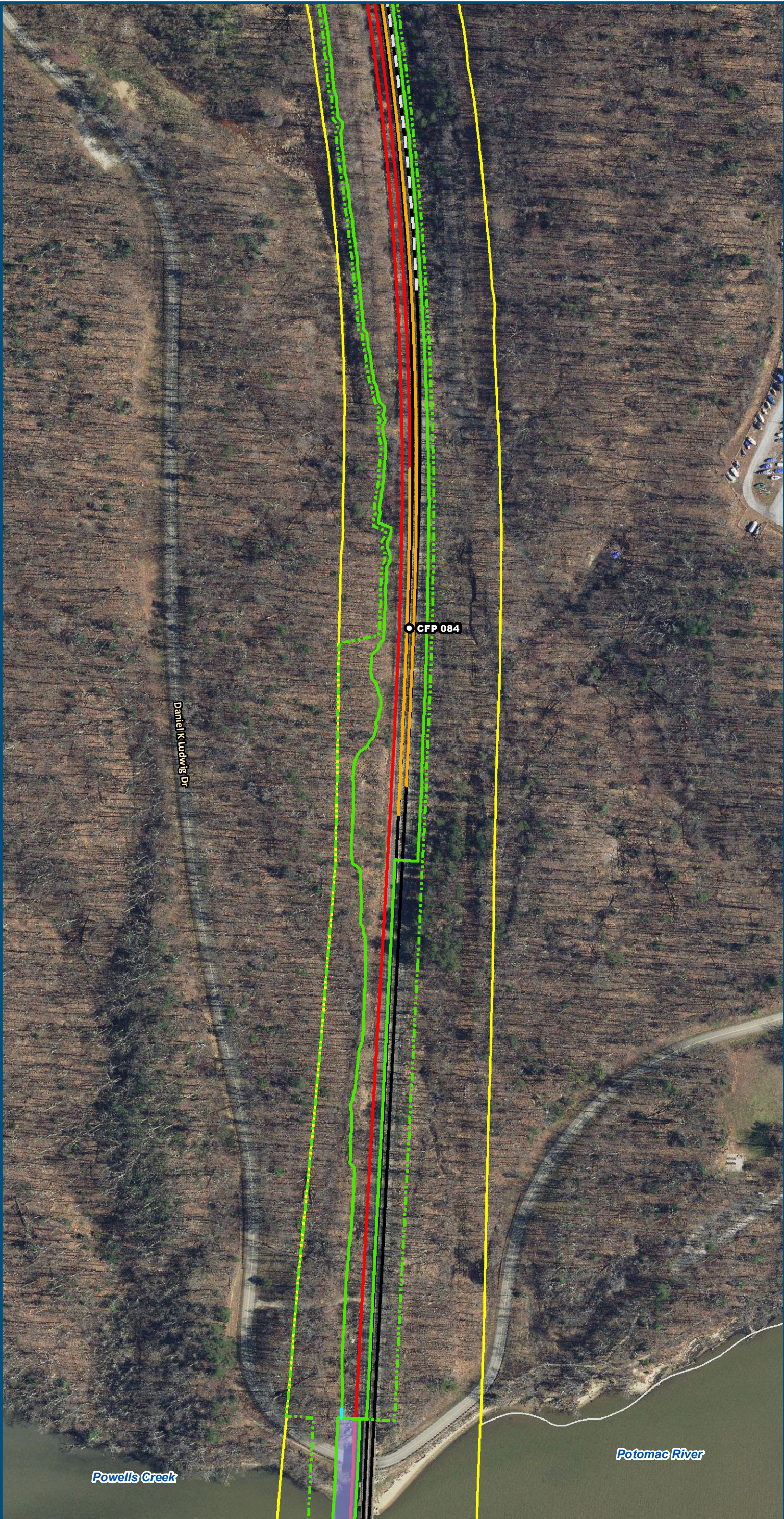
**Preferred Alternative  
Mapbook**

**Sheet 31 of 217**

\\dlsmain\GIS\_DATA\GIS\Projects\011545\_VA Dept of Rail\Public Transportation\0239056\_RAPS-4\AIDev-Concept\Eng\map\_docs\mxd\FEIS\PreA\Mapbook\DC2RVA\_FEISMapbook\_Final\_11x17.mxd | Last Updated: 03.13.2019



\\dlsmain\GIS\_DATA\GIS\Projects\011545\_VA Dept of Rails-Public\Transportation\0239056\_RAPS-4\AIDev-Concept\Eng\map\_docs\mxd\FEIS\PreA\Mapbook\DC2RVA\_FEISMapbook\_Final\_11x17.mxd | Last Updated: 03.13.2019



0 100 200  
Feet  
1 inch = 200 feet  
@ 11 x 17 inches  
Projection: Lambert Conformal Conic  
State Plane Virginia North FIPS 4501 Feet  
North American Datum of 1983  
Imagery/Basemap Source: 2015-2017 VGIN  
Aerial Imagery; ESRI World Transportation

Legend

- Permanent Limits of Disturbance
- Temporary Limits of Disturbance
- CSXT Mileposts
- Control Point/Interlocking
- Track - Existing
- Track - Improve Existing
- Track - Proposed
- Track - Proposed by others
- Track - Remove
- Crossover/Turnout - Proposed
- Crossover/Turnout - Proposed by others
- Crossover/Turnout - Remove
- Retaining Walls
- Retaining Walls - Proposed by others
- Bridge
- Bridge - Proposed by others
- Roadway
- Roadway - Proposed by others
- Edge of Pavement
- Roadway Centerline
- Median Separators
- Gate/Quad Gate
- Locking Gate
- Crossing - Closure
- Crossing - Grade Separate
- Crossing - Four-Quadrant Gate
- Crossing - Gates with Center Median Treatment
- Crossing - Locking Gate (Private)
- SWM Facilities
- Drainage Culvert Crossings
- Drainage Directional Arrows
- Stations
- Station Platform - Existing
- Station Platform - Proposed
- Station Platform - Proposed by others
- Station Platform - Remove
- Building/Structure
- CSXT ROW (County Parcel Data)
- City/County Parcels
- City/County Boundary

Preferred Alternative  
Mapbook

Sheet 32 of 217



\\dlsmain\GIS\_DATA\GIS\Projects\011545\_VA Dept of Rail\Public Transportation\0239056\_RAPS-4\MapDev-Concept\Eng\map\_docs\mxd\FEIS\PreA\Mapbook\DC2RVA\_FEISMapbook\_Final\_11x17.mxd | Last Updated: 03.13.2019



0 100 200  
Feet

1 inch = 200 feet  
@ 11 x 17 inches

Projection: Lambert Conformal Conic  
State Plane Virginia North FIPS 4501 Feet  
North American Datum of 1983

Imagery/Basemap Source: 2015-2017 VGIN  
Aerial Imagery; ESRI World Transportation

#### Legend

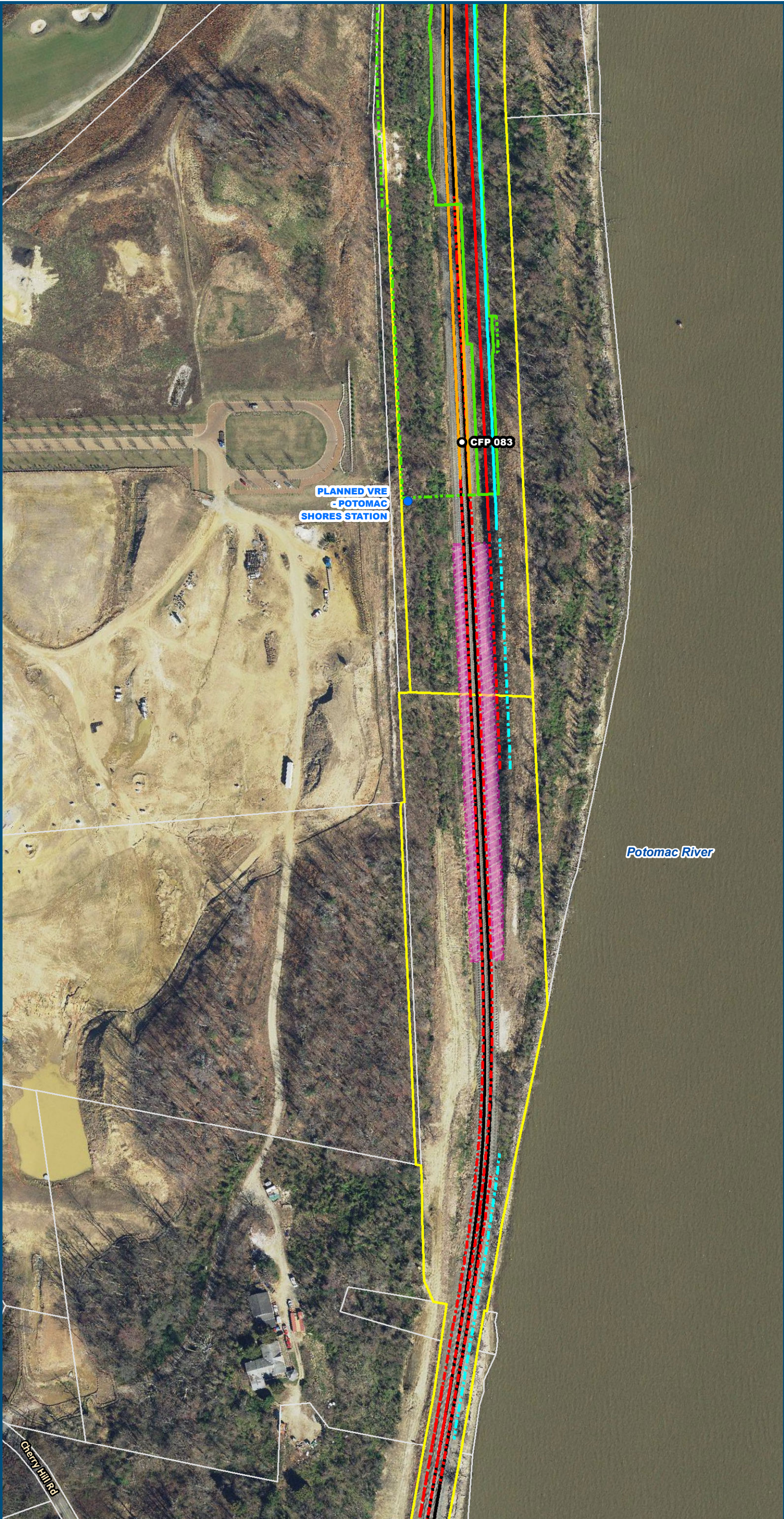
- Permanent Limits of Disturbance
- Temporary Limits of Disturbance
- CSXT Mileposts
- Control Point/Interlocking
- Track - Existing
- Track - Improve Existing
- Track - Proposed
- Track - Proposed by others
- Track - Remove
- Crossover/Turnout - Proposed
- Crossover/Turnout - Proposed by others
- Crossover/Turnout - Remove
- Retaining Walls
- Retaining Walls - Proposed by others
- Bridge
- Bridge - Proposed by others
- Roadway
- Roadway - Proposed by others
- Edge of Pavement
- Roadway Centerline
- Median Separators
- Gate/Quad Gate
- Locking Gate
- Crossing - Closure
- Crossing - Grade Separate
- Crossing - Four-Quadrant Gate
- Crossing - Gates with Center Median Treatment
- Crossing - Locking Gate (Private)
- SWM Facilities
- Drainage Culvert Crossings
- Drainage Directional Arrows
- Stations
- Station Platform - Existing
- Station Platform - Proposed
- Station Platform - Proposed by others
- Station Platform - Remove
- Building/Structure
- CSXT ROW (County Parcel Data)
- City/County Parcels
- City/County Boundary

#### Preferred Alternative Mapbook

Sheet 33 of 217



\\dlsmain\GIS\_DATA\GIS\Projects\011545\_VA Dept of Rails-Public\Transportation\0239056\_RAPS-4\AltDev-Concept\Eng\map\_docs\mxd\FEIS\Pre\AltMapbook\DC2RVA\_FEISMapbook\_Final\_11x17.mxd | Last Updated: 03.13.2019



0 100 200  
Feet  
1 inch = 200 feet  
@ 11 x 17 inches  
Projection: Lambert Conformal Conic  
State Plane Virginia North FIPS 4501 Feet  
North American Datum of 1983  
Imagery/Basemap Source: 2015-2017 VGIN  
Aerial Imagery; ESRI World Transportation

#### Legend

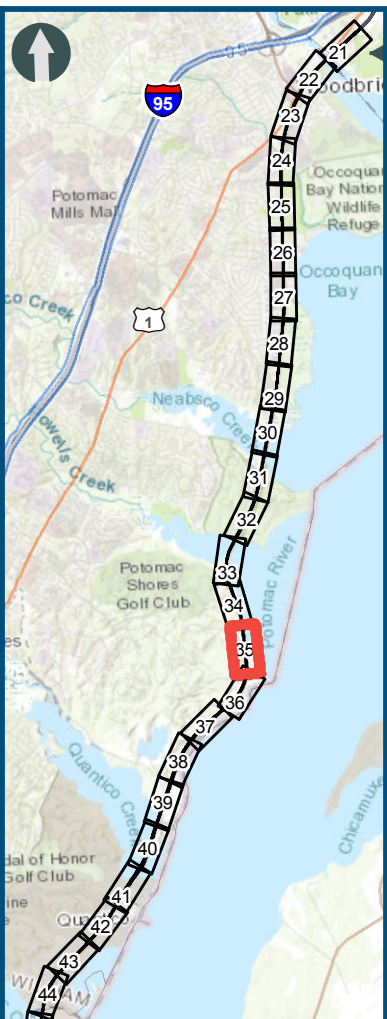
- Permanent Limits of Disturbance
- Temporary Limits of Disturbance
- CSXT Mileposts
- Control Point/Interlocking
- Track - Existing
- Track - Improve Existing
- Track - Proposed
- Track - Proposed by others
- Track - Remove
- Crossover/Turnout - Proposed
- Crossover/Turnout - Proposed by others
- Crossover/Turnout - Remove
- Retaining Walls
- Retaining Walls - Proposed by others
- Bridge
- Bridge - Proposed by others
- Roadway
- Roadway - Proposed by others
- Edge of Pavement
- Roadway Centerline
- Median Separators
- Gate/Quad Gate
- Locking Gate
- Crossing - Closure
- Crossing - Grade Separate
- Crossing - Four-Quadrant Gate
- Crossing - Gates with Center Median Treatment
- Crossing - Locking Gate (Private)
- SWM Facilities
- Drainage Culvert Crossings
- Drainage Directional Arrows
- Stations
- Station Platform - Existing
- Station Platform - Proposed
- Station Platform - Proposed by others
- Station Platform - Remove
- Building/Structure
- CSXT ROW (County Parcel Data)
- City/County Parcels
- City/County Boundary

### Preferred Alternative Mapbook

Sheet 34 of 217



\\dlsmain\GIS\_DATA\GIS\Projects\011545\_VA Dept of Rails-Public\Transportation\0239056\_RAPS-4\AIDev-Concept\Eng\map\_docs\mxd\FEIS\PreA\Mapbook\DC2RVA\_FEISMapbook\_Final\_11x17.mxd | Last Updated: 03.13.2019



0 100 200  
Feet  
1 inch = 200 feet  
@ 11 x 17 inches  
Projection: Lambert Conformal Conic  
State Plane Virginia North FIPS 4501 Feet  
North American Datum of 1983  
Imagery/Basemap Source: 2015-2017 VGIN  
Aerial Imagery; ESRI World Transportation

#### Legend

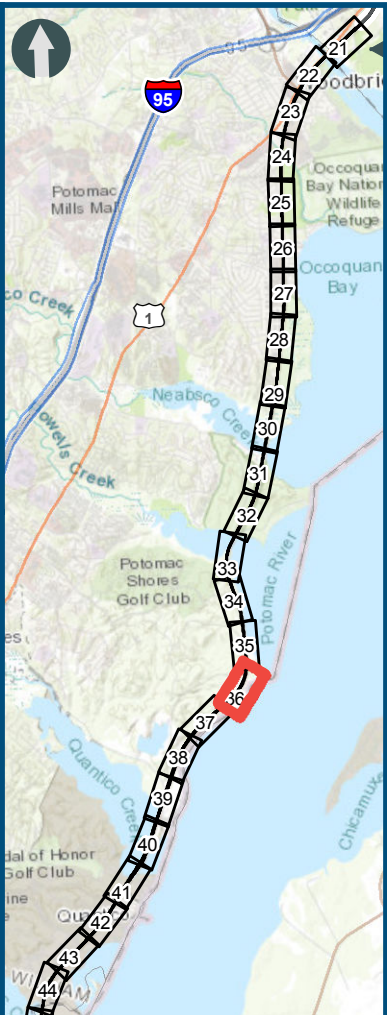
- Permanent Limits of Disturbance
- Temporary Limits of Disturbance
- CSXT Mileposts
- Control Point/Interlocking
- Track - Existing
- Track - Improve Existing
- Track - Proposed
- Track - Proposed by others
- Track - Remove
- Crossover/Turnout - Proposed
- Crossover/Turnout - Proposed by others
- Crossover/Turnout - Remove
- Retaining Walls
- Retaining Walls - Proposed by others
- Bridge
- Bridge - Proposed by others
- Roadway
- Roadway - Proposed by others
- Edge of Pavement
- Roadway Centerline
- Median Separators
- Gate/Quad Gate
- Locking Gate
- Crossing - Closure
- Crossing - Grade Separate
- Crossing - Four-Quadrant Gate
- Crossing - Gates with Center Median Treatment
- Crossing - Locking Gate (Private)
- SWM Facilities
- Drainage Culvert Crossings
- Drainage Directional Arrows
- Stations
- Station Platform - Existing
- Station Platform - Proposed
- Station Platform - Proposed by others
- Station Platform - Remove
- Building/Structure
- CSXT ROW (County Parcel Data)
- City/County Parcels
- City/County Boundary

#### Preferred Alternative Mapbook

Sheet 35 of 217



\\dlsmain\GIS\_DATA\GIS\Projects\011545\_VA Dept of Rails-Public\Transportation\0239056\_RAPS-4\AI\Dev-Concept\Eng\map\_docs\mxd\FEIS\Pre\AI\Mapbook\DC2RVA\_FEISMapbook\_Final\_11x17.mxd | Last Updated: 03.13.2019



0 100 200  
Feet  
1 inch = 200 feet  
@ 11 x 17 inches  
Projection: Lambert Conformal Conic  
State Plane Virginia North FIPS 4501 Feet  
North American Datum of 1983  
Imagery/Basemap Source: 2015-2017 VGIN  
Aerial Imagery; ESRI World Transportation

#### Legend

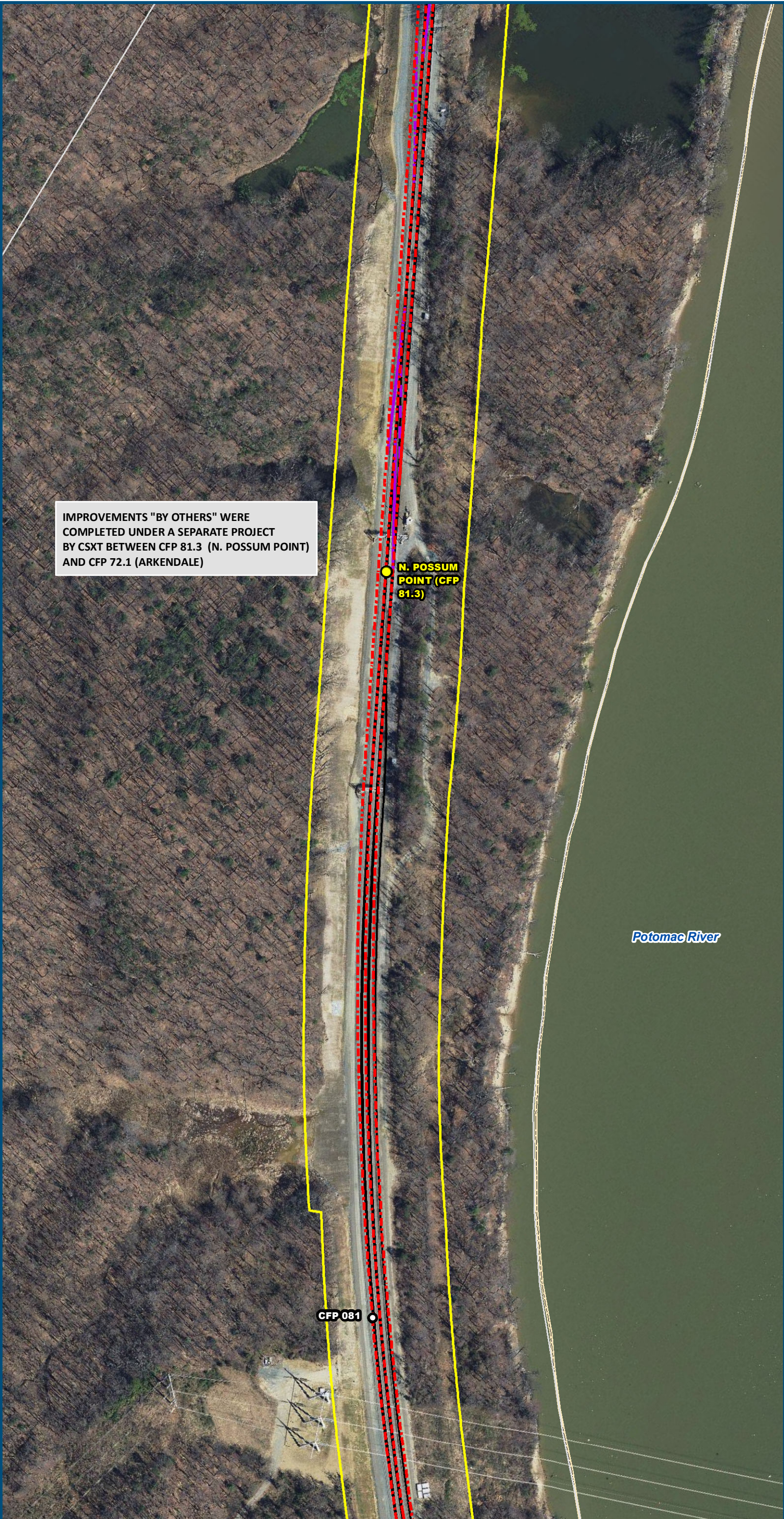
- Permanent Limits of Disturbance
- Temporary Limits of Disturbance
- CSXT Mileposts
- Control Point/Interlocking
- Track - Existing
- Track - Improve Existing
- Track - Proposed
- Track - Proposed by others
- Track - Remove
- Crossover/Turnout - Proposed
- Crossover/Turnout - Proposed by others
- Crossover/Turnout - Remove
- Retaining Walls
- Retaining Walls - Proposed by others
- Bridge
- Bridge - Proposed by others
- Roadway
- Roadway - Proposed by others
- Edge of Pavement
- Roadway Centerline
- Median Separators
- Gate/Quad Gate
- Locking Gate
- Crossing - Closure
- Crossing - Grade Separate
- Crossing - Four-Quadrant Gate
- Crossing - Gates with Center Median Treatment
- Crossing - Locking Gate (Private)
- SWM Facilities
- Drainage Culvert Crossings
- Drainage Directional Arrows
- Stations
- Station Platform - Existing
- Station Platform - Proposed
- Station Platform - Proposed by others
- Station Platform - Remove
- Building/Structure
- CSXT ROW (County Parcel Data)
- City/County Parcels
- City/County Boundary

#### Preferred Alternative Mapbook

Sheet 36 of 217



\\dlsmain\GIS\_DATA\GIS\Projects\011545\_VA Dept of Rails-Public\Transportation\0239056\_RAPS-4\AI\Dev-Concept\Eng\map\_docs\mxd\FEIS\PreAI\Mapbook\DC2RVA\_FEISMapbook\_Final\_11x17.mxd | Last Updated: 03.13.2019

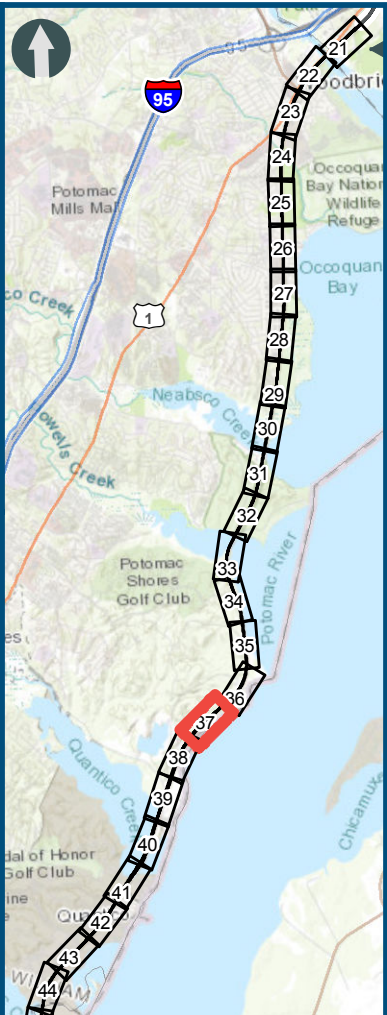


IMPROVEMENTS "BY OTHERS" WERE COMPLETED UNDER A SEPARATE PROJECT BY CSXT BETWEEN CFP 81.3 (N. POSSUM POINT) AND CFP 72.1 (ARKENDALE)

N. POSSUM POINT (CFP 81.3)

CFP 081

Potomac River



0 100 200  
Feet

1 inch = 200 feet  
@ 11 x 17 inches

Projection: Lambert Conformal Conic  
State Plane Virginia North FIPS 4501 Feet  
North American Datum of 1983

Imagery/Basemap Source: 2015-2017 VGIN  
Aerial Imagery; ESRI World Transportation

Legend

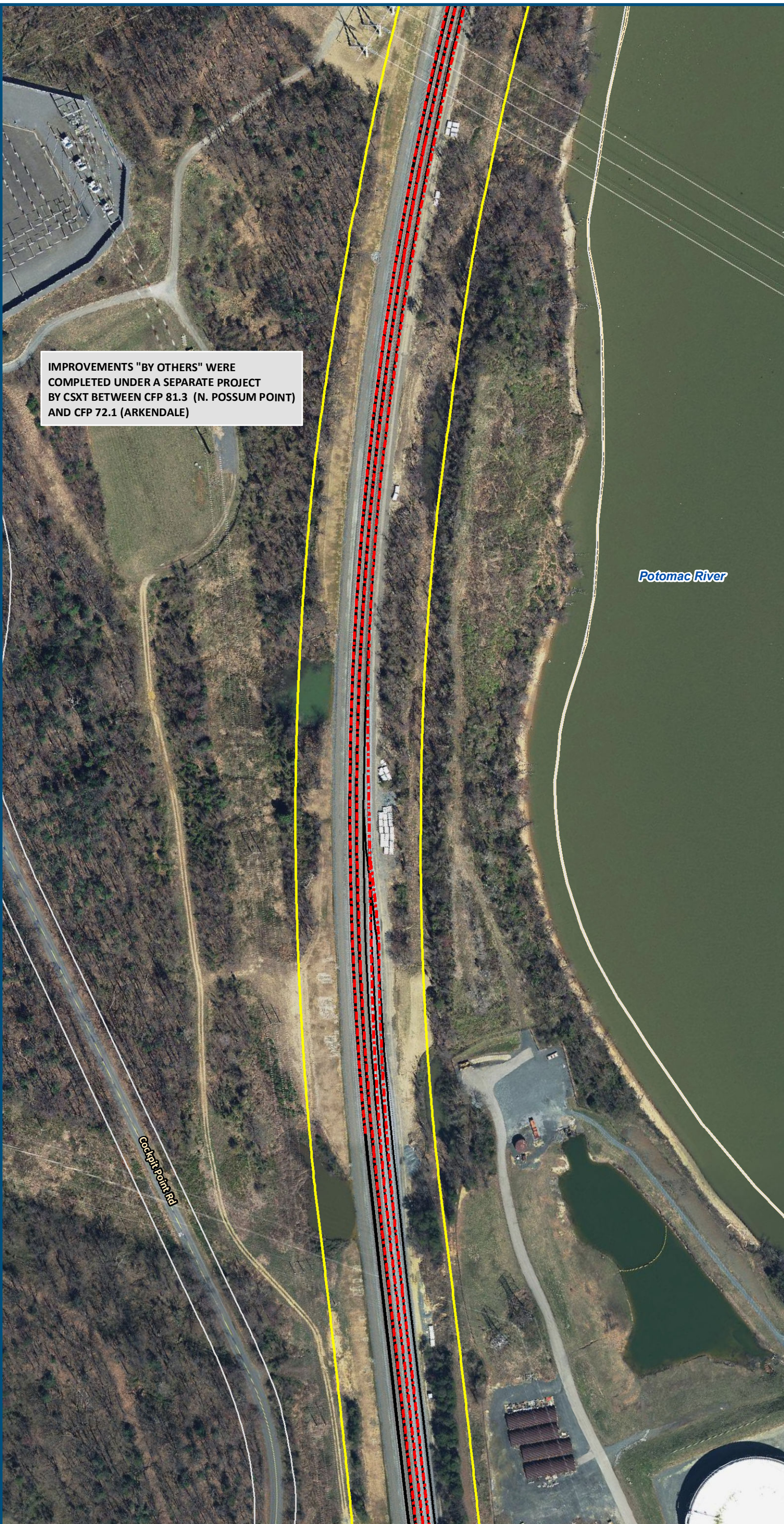
- Permanent Limits of Disturbance
- Temporary Limits of Disturbance
- CSXT Mileposts
- Control Point/Interlocking
- Track - Existing
- Track - Improve Existing
- Track - Proposed
- Track - Proposed by others
- Track - Remove
- Crossover/Turnout - Proposed
- Crossover/Turnout - Proposed by others
- Crossover/Turnout - Remove
- Retaining Walls
- Retaining Walls - Proposed by others
- Bridge
- Bridge - Proposed by others
- Roadway
- Roadway - Proposed by others
- Edge of Pavement
- Roadway Centerline
- Median Separators
- Gate/Quad Gate
- Locking Gate
- Crossing - Closure
- Crossing - Grade Separate
- Crossing - Four-Quadrant Gate
- Crossing - Gates with Center Median Treatment
- Crossing - Locking Gate (Private)
- SWM Facilities
- Drainage Culvert Crossings
- Drainage Directional Arrows
- Stations
- Station Platform - Existing
- Station Platform - Proposed
- Station Platform - Proposed by others
- Station Platform - Remove
- Building/Structure
- CSXT ROW (County Parcel Data)
- City/County Parcels
- City/County Boundary

Preferred Alternative  
Mapbook

Sheet 37 of 217



\\dlsmain\GIS\_DATA\GIS\Projects\011545\_VA Dept of Rail\Public\Transportation\0239056\_RAPS-4\AI\Dev-Concept\Eng\map\_docs\mxd\FEIS\Pre\AI\Mapbook\DC2RVA\_FEISMapbook\_Final\_11x17.mxd | Last Updated: 03.13.2019



0 100 200  
Feet  
1 inch = 200 feet  
@ 11 x 17 inches  
Projection: Lambert Conformal Conic  
State Plane Virginia North FIPS 4501 Feet  
North American Datum of 1983  
Imagery/Basemap Source: 2015-2017 VGIN  
Aerial Imagery; ESRI World Transportation

#### Legend

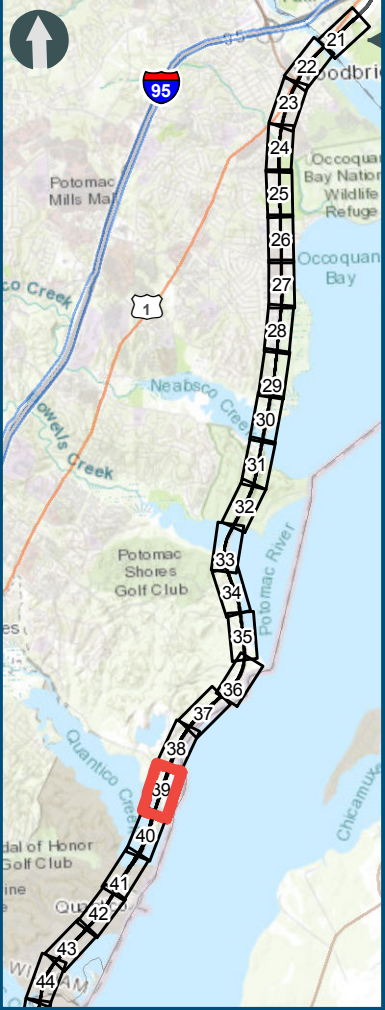
- Permanent Limits of Disturbance
- Temporary Limits of Disturbance
- CSXT Mileposts
- Control Point/Interlocking
- Track - Existing
- Track - Improve Existing
- Track - Proposed
- Track - Proposed by others
- Track - Remove
- Crossover/Turnout - Proposed
- Crossover/Turnout - Proposed by others
- Crossover/Turnout - Remove
- Retaining Walls
- Retaining Walls - Proposed by others
- Bridge
- Bridge - Proposed by others
- Roadway
- Roadway - Proposed by others
- Edge of Pavement
- Roadway Centerline
- Median Separators
- Gate/Quad Gate
- Locking Gate
- Crossing - Closure
- Crossing - Grade Separate
- Crossing - Four-Quadrant Gate
- Crossing - Gates with Center Median Treatment
- Crossing - Locking Gate (Private)
- SWM Facilities
- Drainage Culvert Crossings
- Drainage Directional Arrows
- Stations
- Station Platform - Existing
- Station Platform - Proposed
- Station Platform - Proposed by others
- Station Platform - Remove
- Building/Structure
- CSXT ROW (County Parcel Data)
- City/County Parcels
- City/County Boundary

#### Preferred Alternative Mapbook

Sheet 38 of 217



IMPROVEMENTS "BY OTHERS" WERE COMPLETED UNDER A SEPARATE PROJECT BY CSXT BETWEEN CFP 81.3 (N. POSSUM POINT) AND CFP 72.1 (ARKENDALE)



0 100 200  
Feet  
1 inch = 200 feet  
@ 11 x 17 inches

Projection: Lambert Conformal Conic  
State Plane Virginia North FIPS 4501 Feet  
North American Datum of 1983  
Imagery/Basemap Source: 2015-2017 VGIN  
Aerial Imagery; ESRI World Transportation

Legend

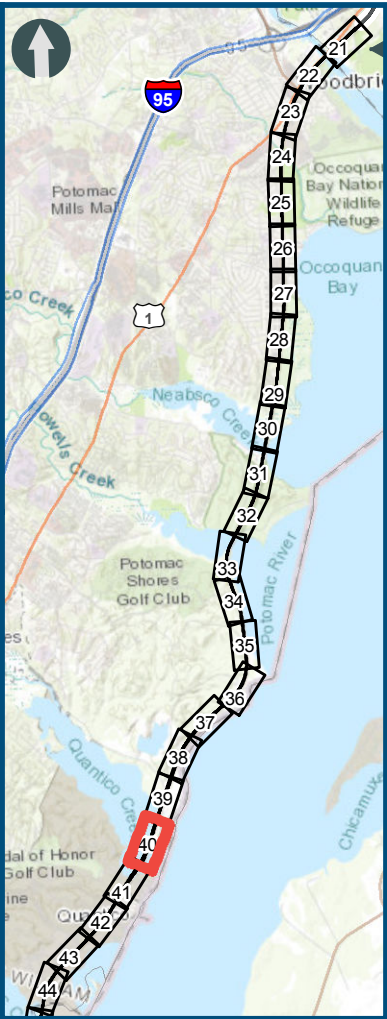
- Permanent Limits of Disturbance
- Temporary Limits of Disturbance
- CSXT Mileposts
- Control Point/Interlocking
- Track - Existing
- Track - Improve Existing
- Track - Proposed
- Track - Proposed by others
- Track - Remove
- Crossover/Turnout - Proposed
- Crossover/Turnout - Proposed by others
- Crossover/Turnout - Remove
- Retaining Walls
- Retaining Walls - Proposed by others
- Bridge
- Bridge - Proposed by others
- Roadway
- Roadway - Proposed by others
- Edge of Pavement
- Roadway Centerline
- Median Separators
- Gate/Quad Gate
- Locking Gate
- Crossing - Closure
- Crossing - Grade Separate
- Crossing - Four-Quadrant Gate
- Crossing - Gates with Center Median Treatment
- Crossing - Locking Gate (Private)
- SWM Facilities
- Drainage Culvert Crossings
- Drainage Directional Arrows
- Stations
- Station Platform - Existing
- Station Platform - Proposed
- Station Platform - Proposed by others
- Station Platform - Remove
- Building/Structure
- CSXT ROW (County Parcel Data)
- City/County Parcels
- City/County Boundary

Preferred Alternative  
Mapbook

Sheet 39 of 217



\\dlsmain\GIS\_DATA\GIS\Projects\011545\_VA Dept of Rail\Public Transportation\0239056\_RAPS-4\AltDev-Concept\Eng\map\_docs\mxd\FEIS\PreA\Mapbook\DC2RVA\_FEISMapbook\_Final\_11x17.mxd | Last Updated: 03.13.2019



0 100 200  
Feet  
1 inch = 200 feet  
@ 11 x 17 inches  
Projection: Lambert Conformal Conic  
State Plane Virginia North FIPS 4501 Feet  
North American Datum of 1983  
Imagery/Basemap Source: 2015-2017 VGIN  
Aerial Imagery; ESRI World Transportation

#### Legend

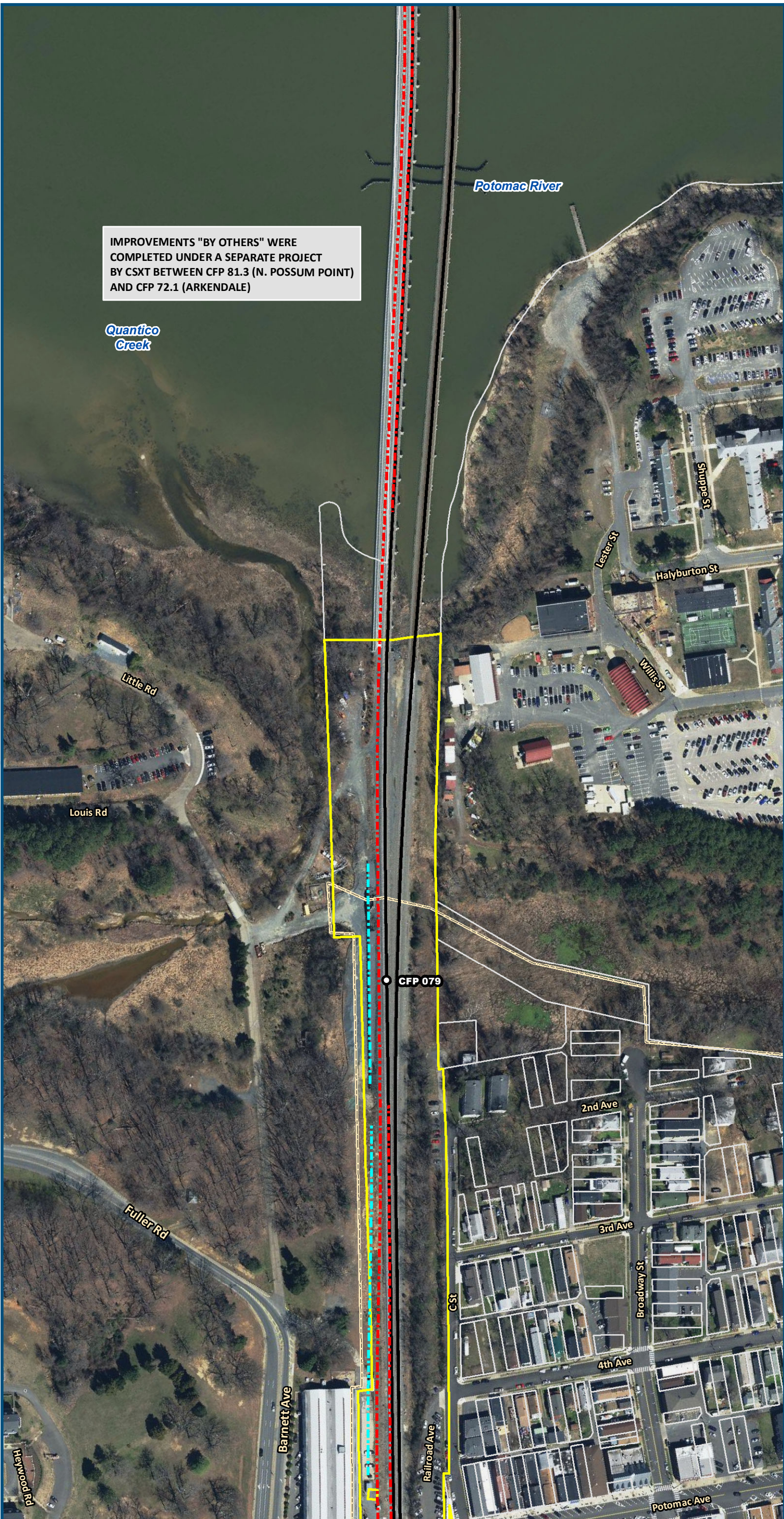
- Permanent Limits of Disturbance
- Temporary Limits of Disturbance
- CSXT Mileposts
- Control Point/Interlocking
- Track - Existing
- Track - Improve Existing
- Track - Proposed
- Track - Proposed by others
- Track - Remove
- Crossover/Turnout - Proposed
- Crossover/Turnout - Proposed by others
- Crossover/Turnout - Remove
- Retaining Walls
- Retaining Walls - Proposed by others
- Bridge
- Bridge - Proposed by others
- Roadway
- Roadway - Proposed by others
- Edge of Pavement
- Roadway Centerline
- Median Separators
- Gate/Quad Gate
- Locking Gate
- Crossing - Closure
- Crossing - Grade Separate
- Crossing - Four-Quadrant Gate
- Crossing - Gates with Center Median Treatment
- Crossing - Locking Gate (Private)
- SWM Facilities
- Drainage Culvert Crossings
- Drainage Directional Arrows
- Stations
- Station Platform - Existing
- Station Platform - Proposed
- Station Platform - Proposed by others
- Station Platform - Remove
- Building/Structure
- CSXT ROW (County Parcel Data)
- City/County Parcels
- City/County Boundary

#### Preferred Alternative Mapbook

Sheet 40 of 217



\\dlsmain\GIS\_DATA\GIS\Projects\011545\_VA Dept of Rails-Public\Transportation\0239056\_RAPS-4\AltDev-Concept\Eng\map\_docs\mxd\FEIS\PreAlt\Mapbook\DC2RVA\_FEISMapbook\_Final\_11x17.mxd | Last Updated: 03.13.2019



IMPROVEMENTS "BY OTHERS" WERE COMPLETED UNDER A SEPARATE PROJECT BY CSXT BETWEEN CFP 81.3 (N. POSSUM POINT) AND CFP 72.1 (ARKENDALE)

Quantico  
Creek

Potomac River

Little Rd

Louis Rd

Fuller Rd

Barnett Ave

Railroad Ave

C St

2nd Ave

3rd Ave

4th Ave

Broadway St

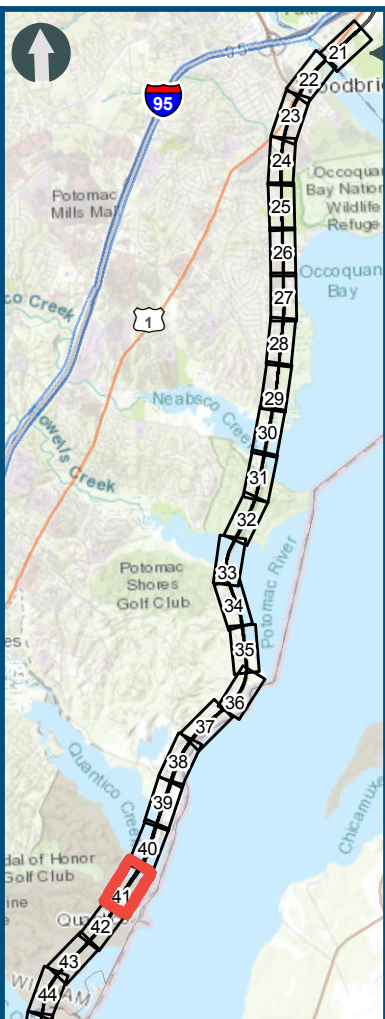
Potomac Ave

Sluip St

Lester St

Halyburton St

CFP 079



0 100 200

Feet

1 inch = 200 feet  
@ 11 x 17 inches

Projection: Lambert Conformal Conic  
State Plane Virginia North FIPS 4501 Feet  
North American Datum of 1983

Imagery/Basemap Source: 2015-2017 VGIN  
Aerial Imagery; ESRI World Transportation

### Legend

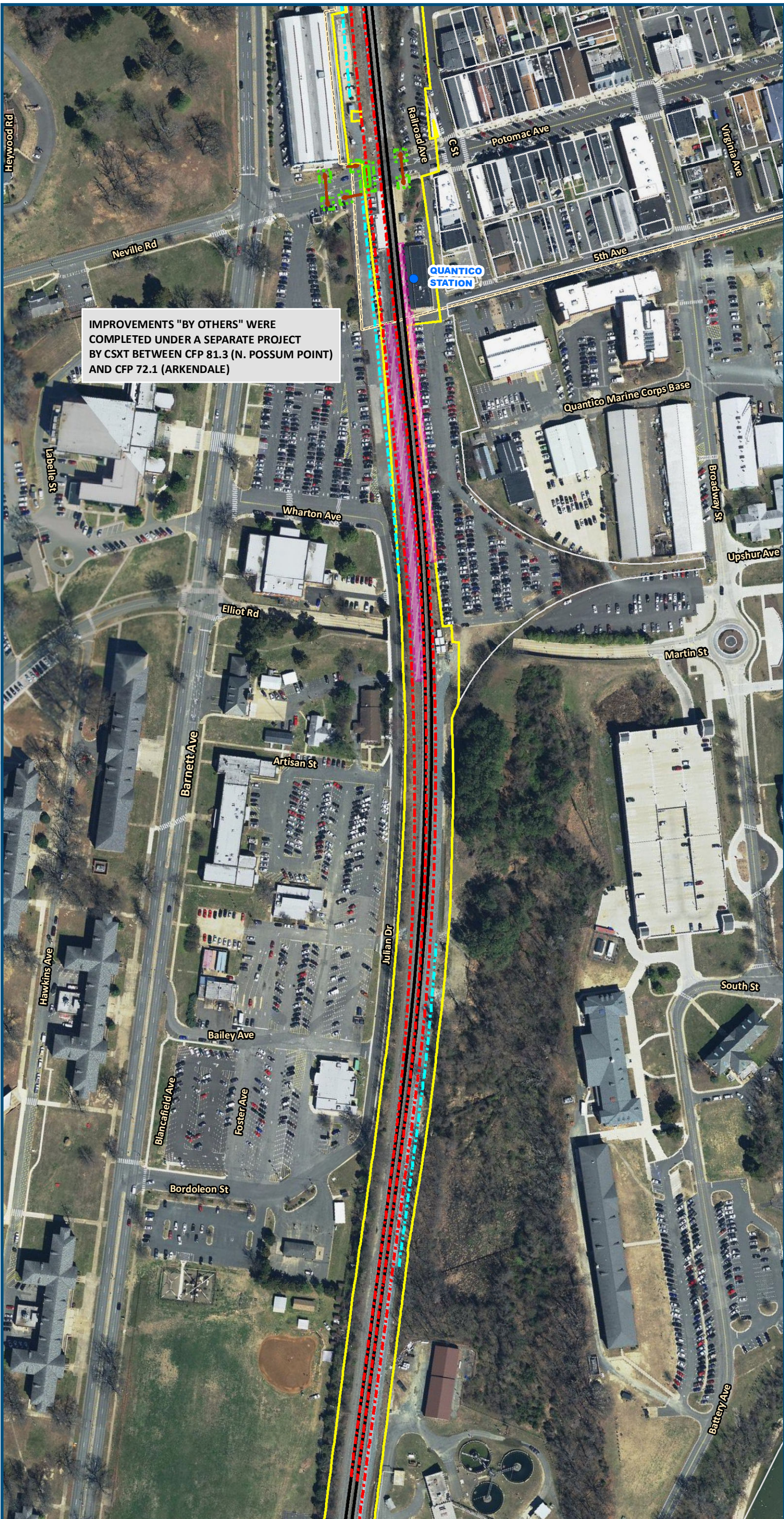
- Permanent Limits of Disturbance
- Temporary Limits of Disturbance
- CSXT Mileposts
- Control Point/Interlocking
- Track - Existing
- Track - Improve Existing
- Track - Proposed
- Track - Proposed by others
- Track - Remove
- Crossover/Turnout - Proposed
- Crossover/Turnout - Proposed by others
- Crossover/Turnout - Remove
- Retaining Walls
- Retaining Walls - Proposed by others
- Bridge
- Bridge - Proposed by others
- Roadway
- Roadway - Proposed by others
- Edge of Pavement
- Roadway Centerline
- Median Separators
- Gate/Quad Gate
- Locking Gate
- Crossing - Closure
- Crossing - Grade Separate
- Crossing - Four-Quadrant Gate
- Crossing - Gates with Center Median Treatment
- Crossing - Locking Gate (Private)
- SWM Facilities
- Drainage Culvert Crossings
- Drainage Directional Arrows
- Stations
- Station Platform - Existing
- Station Platform - Proposed
- Station Platform - Proposed by others
- Station Platform - Remove
- Building/Structure
- CSXT ROW (County Parcel Data)
- City/County Parcels
- City/County Boundary

### Preferred Alternative Mapbook

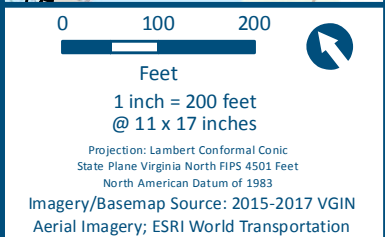
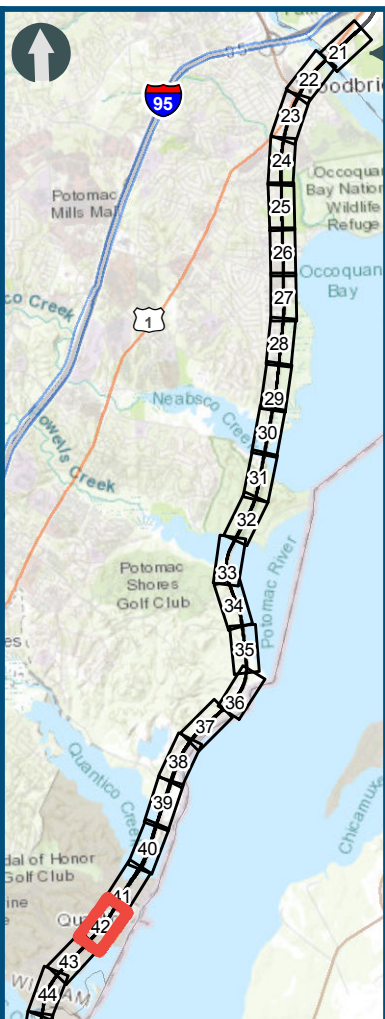
Sheet 41 of 217



\\dlsmain\GIS\_DATA\GIS\Projects\011545\_VA Dept of Rail\Public\Transportation\0239056\_RAPS-4\AI\Dev-Concept\Eng\map\_docs\mxd\FEIS\PreAI\Mapbook\DC2RVA\_FEISMapbook\_Final\_11x17.mxd | Last Updated: 03.13.2019



IMPROVEMENTS "BY OTHERS" WERE COMPLETED UNDER A SEPARATE PROJECT BY CSXT BETWEEN CFP 81.3 (N. POSSUM POINT) AND CFP 72.1 (ARKENDALE)



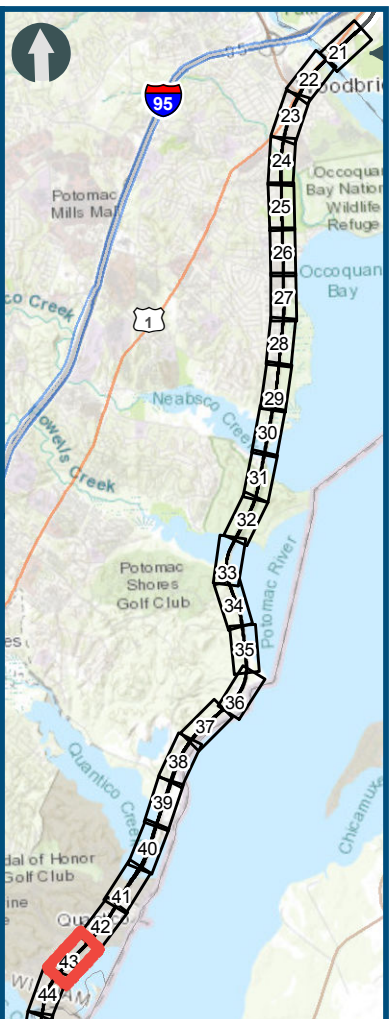
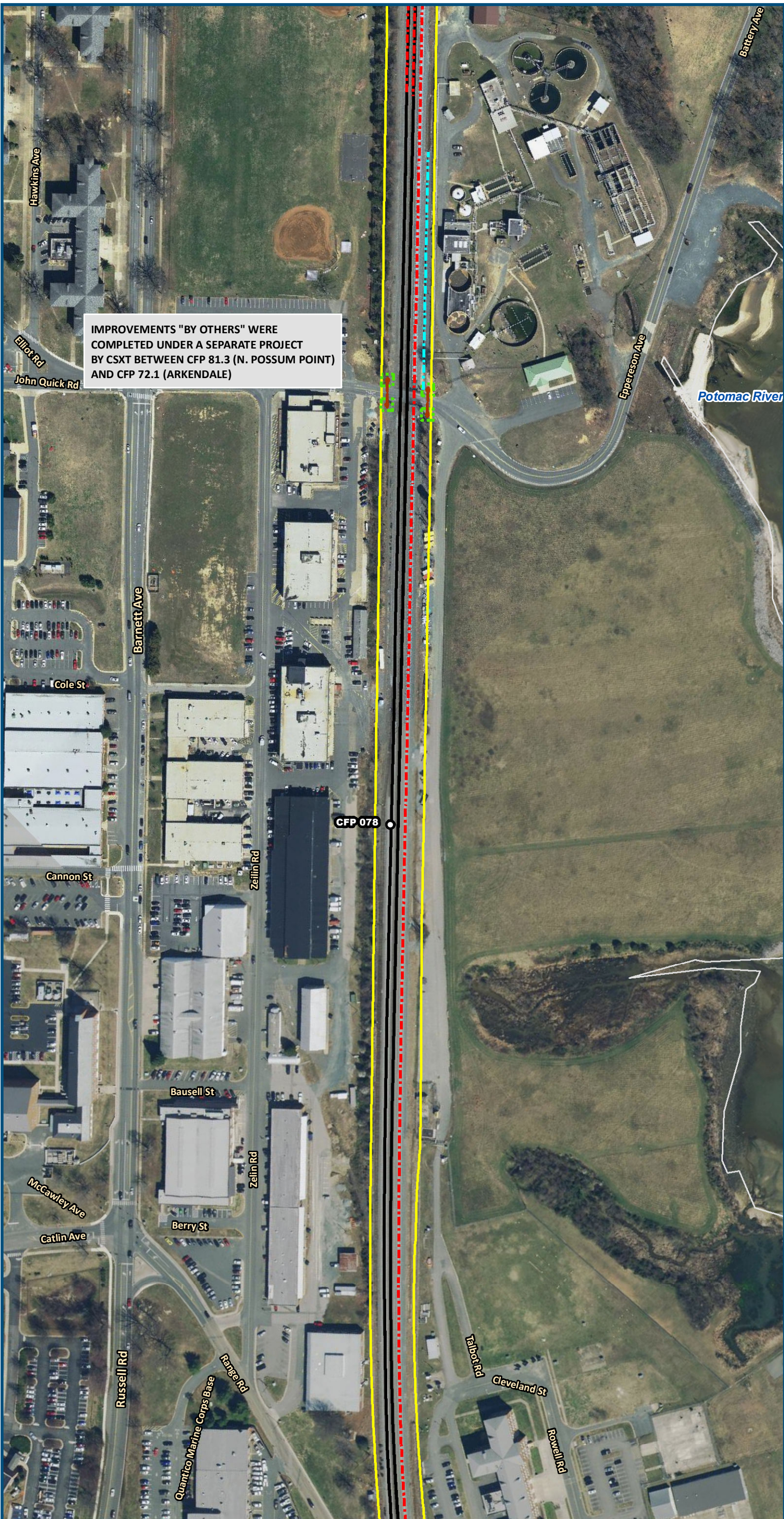
- Legend**
- Permanent Limits of Disturbance
  - Temporary Limits of Disturbance
  - CSXT Mileposts
  - Control Point/Interlocking
  - Track - Existing
  - Track - Improve Existing
  - Track - Proposed
  - Track - Proposed by others
  - Track - Remove
  - Crossover/Turnout - Proposed
  - Crossover/Turnout - Proposed by others
  - Crossover/Turnout - Remove
  - Retaining Walls
  - Retaining Walls - Proposed by others
  - Bridge
  - Bridge - Proposed by others
  - Roadway
  - Roadway - Proposed by others
  - Edge of Pavement
  - Roadway Centerline
  - Median Separators
  - Gate/Quad Gate
  - Locking Gate
  - Crossing - Closure
  - Crossing - Grade Separate
  - Crossing - Four-Quadrant Gate
  - Crossing - Gates with Center Median Treatment
  - Crossing - Locking Gate (Private)
  - SWM Facilities
  - Drainage Culvert Crossings
  - Drainage Directional Arrows
  - Stations
  - Station Platform - Existing
  - Station Platform - Proposed
  - Station Platform - Proposed by others
  - Station Platform - Remove
  - Building/Structure
  - CSXT ROW (County Parcel Data)
  - City/County Parcels
  - City/County Boundary

## Preferred Alternative Mapbook

Sheet 42 of 217



\\dlmain\GIS\_DATA\GIS\Projects\011545\_VA Dept of Rail\Public\Transportation\0239056\_RAPS-4\AIDev-Concept\Eng\map\_docs\mxd\FEIS\PreAID\mapbook\DC2RVA\_FEISMapbook\_Final\_11x17.mxd | Last Updated: 03.13.2019



0 100 200  
Feet  
1 inch = 200 feet  
@ 11 x 17 inches  
Projection: Lambert Conformal Conic  
State Plane Virginia North FIPS 4501 Feet  
North American Datum of 1983  
Imagery/Basemap Source: 2015-2017 VGIN  
Aerial Imagery; ESRI World Transportation

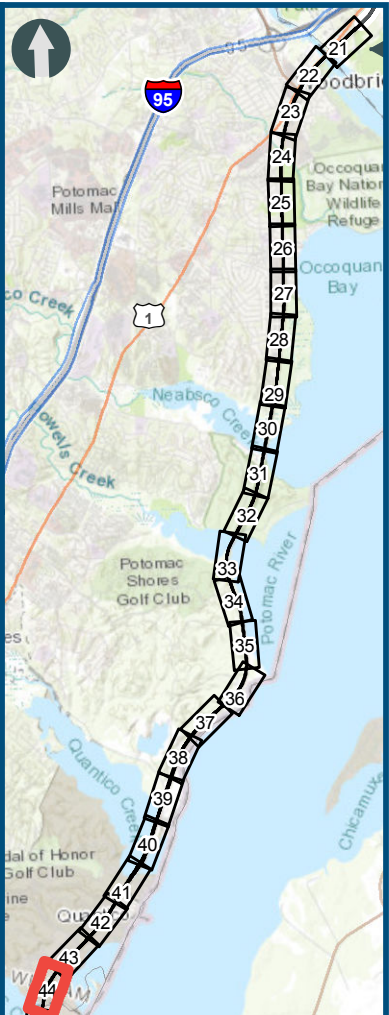
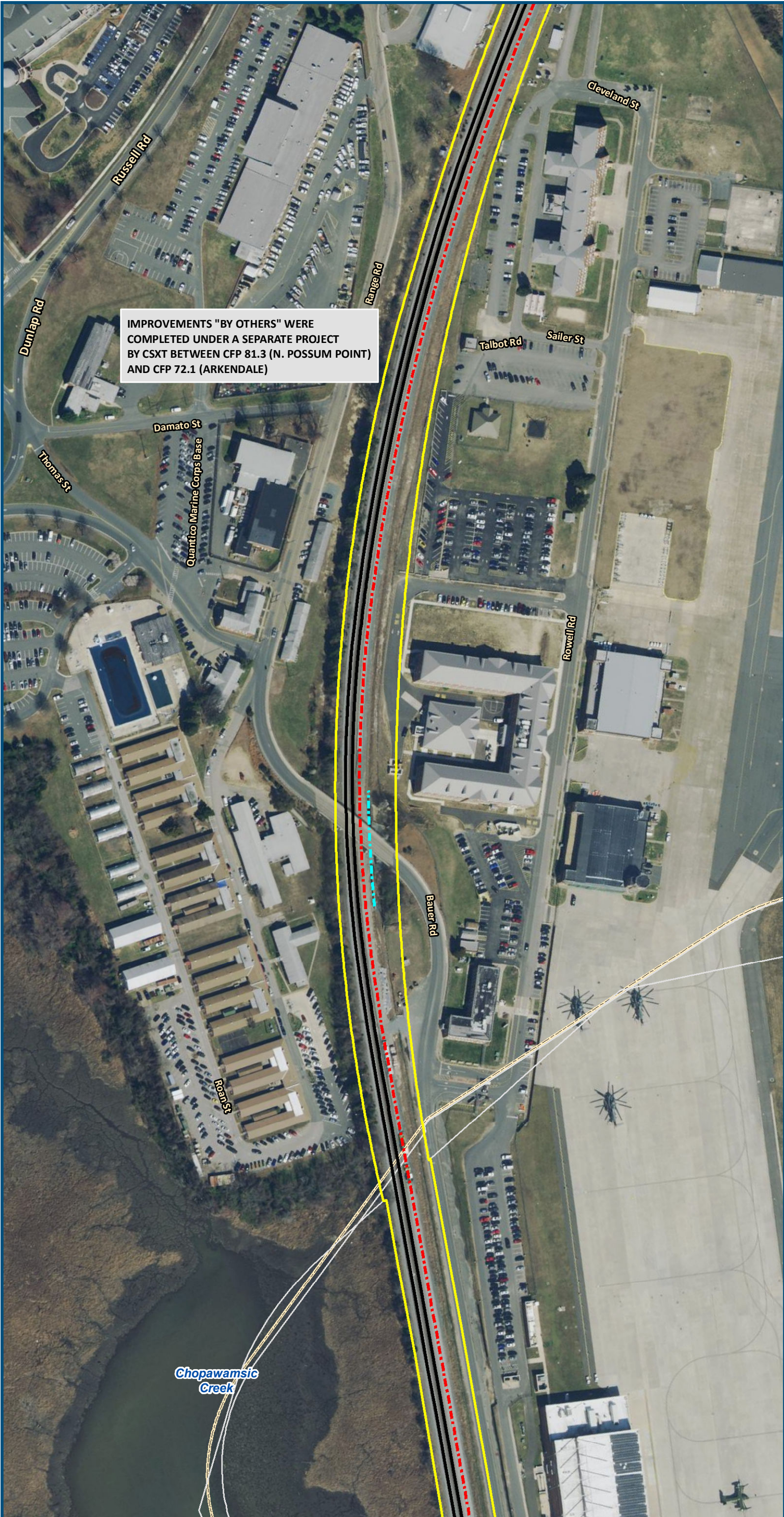
- Legend**
- Permanent Limits of Disturbance
  - Temporary Limits of Disturbance
  - CSXT Mileposts
  - Control Point/Interlocking
  - Track - Existing
  - Track - Improve Existing
  - Track - Proposed
  - Track - Proposed by others
  - Track - Remove
  - Crossover/Turnout - Proposed
  - Crossover/Turnout - Proposed by others
  - Crossover/Turnout - Remove
  - Retaining Walls
  - Retaining Walls - Proposed by others
  - Bridge
  - Bridge - Proposed by others
  - Roadway
  - Roadway - Proposed by others
  - Edge of Pavement
  - Roadway Centerline
  - Median Separators
  - Gate/Quad Gate
  - Locking Gate
  - Crossing - Closure
  - Crossing - Grade Separate
  - Crossing - Four-Quadrant Gate
  - Crossing - Gates with Center Median Treatment
  - Crossing - Locking Gate (Private)
  - SWM Facilities
  - Drainage Culvert Crossings
  - Drainage Directional Arrows
  - Stations
  - Station Platform - Existing
  - Station Platform - Proposed
  - Station Platform - Proposed by others
  - Station Platform - Remove
  - Building/Structure
  - CSXT ROW (County Parcel Data)
  - City/County Parcels
  - City/County Boundary

**Preferred Alternative  
Mapbook**

Sheet 43 of 217



\\dlmain\GIS\_DATA\GIS\Projects\011545\_VA Dept of Rail\Public Transportation\0239056\_RAPS-4\AIDev-Concept\Eng\map\_docs\mxd\FEIS\PreAID\mapbook\DC2RVA\_FEISMapbook\_Final\_11x17.mxd | Last Updated: 03.13.2019



0 100 200  
Feet  
1 inch = 200 feet  
@ 11 x 17 inches  
Projection: Lambert Conformal Conic  
State Plane Virginia North FIPS 4501 Feet  
North American Datum of 1983  
Imagery/Basemap Source: 2015-2017 VGIN  
Aerial Imagery; ESRI World Transportation

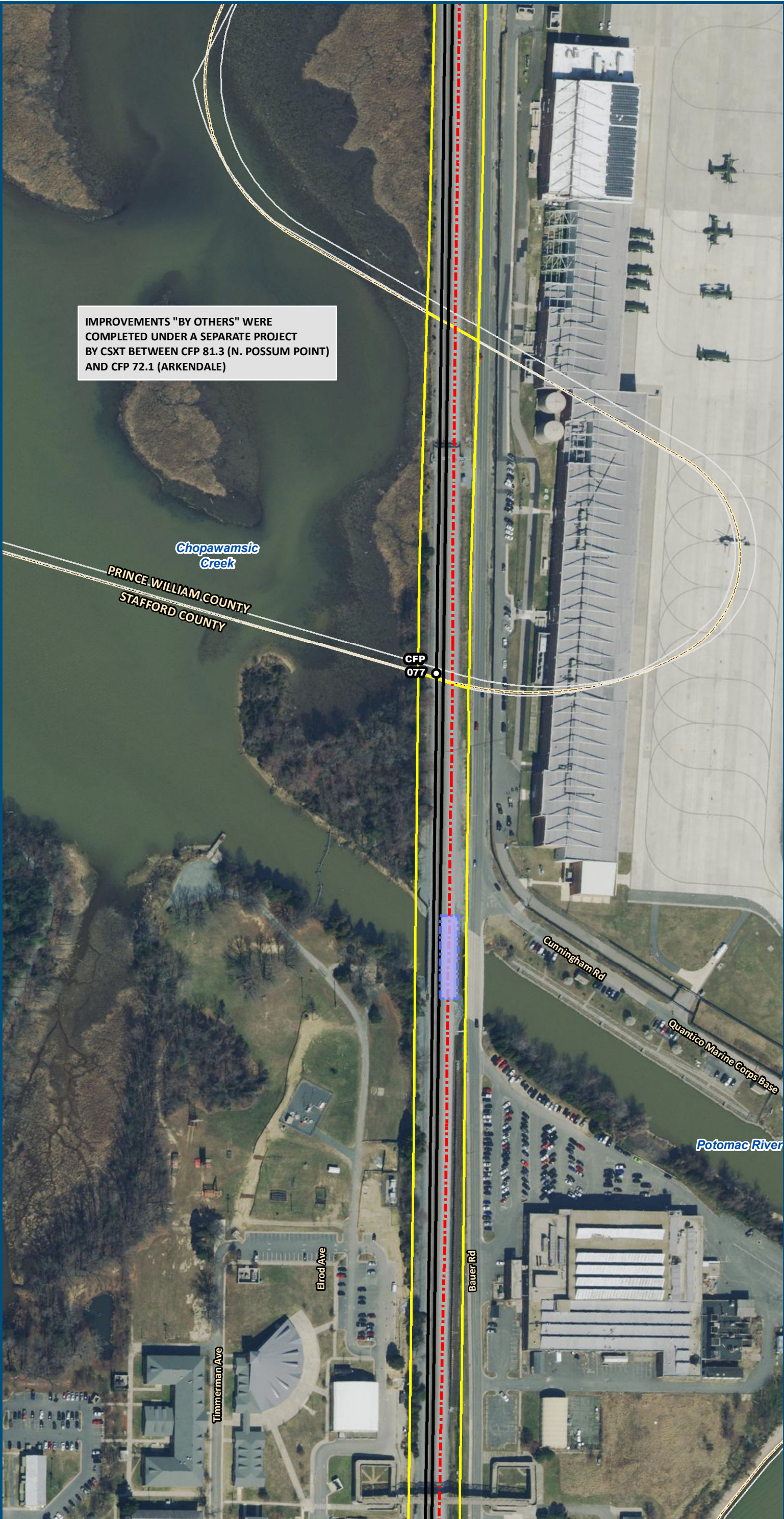
- Legend**
- Permanent Limits of Disturbance
  - Temporary Limits of Disturbance
  - CSXT Mileposts
  - Control Point/Interlocking
  - Track - Existing
  - Track - Improve Existing
  - Track - Proposed
  - Track - Proposed by others
  - Track - Remove
  - Crossover/Turnout - Proposed
  - Crossover/Turnout - Proposed by others
  - Crossover/Turnout - Remove
  - Retaining Walls
  - Retaining Walls - Proposed by others
  - Bridge
  - Bridge - Proposed by others
  - Roadway
  - Roadway - Proposed by others
  - Edge of Pavement
  - Roadway Centerline
  - Median Separators
  - Gate/Quad Gate
  - Locking Gate
  - Crossing - Closure
  - Crossing - Grade Separate
  - Crossing - Four-Quadrant Gate
  - Crossing - Gates with Center Median Treatment
  - Crossing - Locking Gate (Private)
  - SWM Facilities
  - Drainage Culvert Crossings
  - Drainage Directional Arrows
  - Stations
  - Station Platform - Existing
  - Station Platform - Proposed
  - Station Platform - Proposed by others
  - Station Platform - Remove
  - Building/Structure
  - CSXT ROW (County Parcel Data)
  - City/County Parcels
  - City/County Boundary

**Preferred Alternative  
Mapbook**

Sheet 44 of 217



\\dlmain\GIS\_DATA\GIS\Projects\011545\_VA Dept of Rails-Public\Transportation\0239056\_RAPS-4\AI\Dev-Concept\Eng\map\_docs\mxd\FEIS\Pre\AI\Mapbook\DC2RVA\_FEISMapbook\_Final\_11x17.mxd | Last Updated: 03.13.2019



0 100 200  
Feet  
1 inch = 200 feet  
@ 11 x 17 inches  
Projection: Lambert Conformal Conic  
State Plane Virginia North FIPS 4501 Feet  
North American Datum of 1983  
Imagery/Basemap Source: 2015-2017 VGIN  
Aerial Imagery; ESRI World Transportation

#### Legend

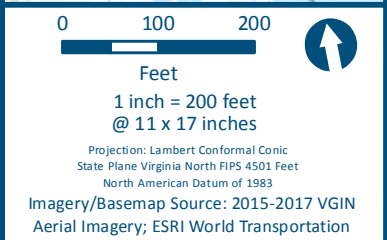
- Permanent Limits of Disturbance
- Temporary Limits of Disturbance
- CSXT Mileposts
- Control Point/Interlocking
- Track - Existing
- Track - Improve Existing
- Track - Proposed
- Track - Proposed by others
- Track - Remove
- Crossover/Turnout - Proposed
- Crossover/Turnout - Proposed by others
- Crossover/Turnout - Remove
- Retaining Walls
- Retaining Walls - Proposed by others
- Bridge
- Bridge - Proposed by others
- Roadway
- Roadway - Proposed by others
- Edge of Pavement
- Roadway Centerline
- Median Separators
- Gate/Quad Gate
- Locking Gate
- Crossing - Closure
- Crossing - Grade Separate
- Crossing - Four-Quadrant Gate
- Crossing - Gates with Center Median Treatment
- Crossing - Locking Gate (Private)
- SWM Facilities
- Drainage Culvert Crossings
- Drainage Directional Arrows
- Stations
- Station Platform - Existing
- Station Platform - Proposed
- Station Platform - Proposed by others
- Station Platform - Remove
- Building/Structure
- CSXT ROW (County Parcel Data)
- City/County Parcels
- City/County Boundary

### Preferred Alternative Mapbook

Sheet 45 of 217



\\dlsmain\GIS\_DATA\GIS\Projects\011545\_VA Dept of Rail\Public\Transportation\0239056\_RAPS-4\AIDev-Concept\Eng\map\_docs\mxd\FEIS\PreAID\mapbook\DC2RVA\_FEISMapbook\_Final\_11x17.mxd | Last Updated: 03.13.2019



- Legend**
- Permanent Limits of Disturbance
  - Temporary Limits of Disturbance
  - CSXT Mileposts
  - Control Point/Interlocking
  - Track - Existing
  - Track - Improve Existing
  - Track - Proposed
  - Track - Proposed by others
  - Track - Remove
  - Crossover/Turnout - Proposed
  - Crossover/Turnout - Proposed by others
  - Crossover/Turnout - Remove
  - Retaining Walls
  - Retaining Walls - Proposed by others
  - Bridge
  - Bridge - Proposed by others
  - Roadway
  - Roadway - Proposed by others
  - Edge of Pavement
  - Roadway Centerline
  - Median Separators
  - Gate/Quad Gate
  - Locking Gate
  - Crossing - Closure
  - Crossing - Grade Separate
  - Crossing - Four-Quadrant Gate
  - Crossing - Gates with Center Median Treatment
  - Crossing - Locking Gate (Private)
  - SWM Facilities
  - Drainage Culvert Crossings
  - Drainage Directional Arrows
  - Stations
  - Station Platform - Existing
  - Station Platform - Proposed
  - Station Platform - Proposed by others
  - Station Platform - Remove
  - Building/Structure
  - CSXT ROW (County Parcel Data)
  - City/County Parcels
  - City/County Boundary

**Preferred Alternative  
Mapbook**

Sheet 46 of 217



\\dlsmain\GIS\_DATA\GIS\Projects\011545\_VA Dept of Railis-Public\Transportation\0239056\_RAPS-4\MapDev-Concept\Eng\map\_docs\mxd\FEIS\Pre\A\Mapbook\DC2RVA\_FEISMapbook\_Final\_11x17.mxd | Last Updated: 03.13.2019

IMPROVEMENTS "BY OTHERS" WERE COMPLETED UNDER A SEPARATE PROJECT BY CSXT BETWEEN CFP 81.3 (N. POSSUM POINT) AND CFP 72.1 (ARKENDALE)

CFP 076

Potomac River



1 inch = 200 feet  
@ 11 x 17 inches

Projection: Lambert Conformal Conic  
State Plane Virginia North FIPS 4501 Feet  
North American Datum of 1983  
Imagery/Basemap Source: 2015-2017 VGIN  
Aerial Imagery; ESRI World Transportation

Legend

- Permanent Limits of Disturbance
- Temporary Limits of Disturbance
- CSXT Mileposts
- Control Point/Interlocking
- Track - Existing
- Track - Improve Existing
- Track - Proposed
- Track - Proposed by others
- Track - Remove
- Crossover/Turnout - Proposed
- Crossover/Turnout - Proposed by others
- Crossover/Turnout - Remove
- Retaining Walls
- Retaining Walls - Proposed by others
- Bridge
- Bridge - Proposed by others
- Roadway
- Roadway - Proposed by others
- Edge of Pavement
- Roadway Centerline
- Median Separators
- Gate/Quad Gate
- Locking Gate
- Crossing - Closure
- Crossing - Grade Separate
- Crossing - Four-Quadrant Gate
- Crossing - Gates with Center Median Treatment
- Crossing - Locking Gate (Private)
- SWM Facilities
- Drainage Culvert Crossings
- Drainage Directional Arrows
- Stations
- Station Platform - Existing
- Station Platform - Proposed
- Station Platform - Proposed by others
- Station Platform - Remove
- Building/Structure
- CSXT ROW (County Parcel Data)
- City/County Parcels
- City/County Boundary

Preferred Alternative  
Mapbook

Sheet 47 of 217



\\dlsmain\GIS\_DATA\GIS\Projects\011545\_VA Dept of Rail-Public Transportation\0239056\_RAPS-4\AltDev-Concept\Eng\map\_docs\mxd\FEIS\PreAltMapbook\DC2RVA\_FEISMapbook\_Final\_11x17.mxd | Last Updated: 03.13.2019

IMPROVEMENTS "BY OTHERS" WERE COMPLETED UNDER A SEPARATE PROJECT BY CSXT BETWEEN CFP 81.3 (N. POSSUM POINT) AND CFP 72.1 (ARKENDALE)

Potomac River



1 inch = 200 feet  
@ 11 x 17 inches

Projection: Lambert Conformal Conic  
State Plane Virginia North FIPS 4501 Feet  
North American Datum of 1983

Imagery/Basemap Source: 2015-2017 VGIN  
Aerial Imagery; ESRI World Transportation

Legend

- Permanent Limits of Disturbance
- Temporary Limits of Disturbance
- CSXT Mileposts
- Control Point/Interlocking
- Track - Existing
- Track - Improve Existing
- Track - Proposed
- Track - Proposed by others
- Track - Remove
- Crossover/Turnout - Proposed
- Crossover/Turnout - Proposed by others
- Crossover/Turnout - Remove
- Retaining Walls
- Retaining Walls - Proposed by others
- Bridge
- Bridge - Proposed by others
- Roadway
- Roadway - Proposed by others
- Edge of Pavement
- Roadway Centerline
- Median Separators
- Gate/Quad Gate
- Locking Gate
- Crossing - Closure
- Crossing - Grade Separate
- Crossing - Four-Quadrant Gate
- Crossing - Gates with Center Median Treatment
- Crossing - Locking Gate (Private)
- SWM Facilities
- Drainage Culvert Crossings
- Drainage Directional Arrows
- Stations
- Station Platform - Existing
- Station Platform - Proposed
- Station Platform - Proposed by others
- Station Platform - Remove
- Building/Structure
- CSXT ROW (County Parcel Data)
- City/County Parcels
- City/County Boundary

Preferred Alternative  
Mapbook

Sheet 48 of 217



\\dlmain\GIS\_DATA\GIS\Projects\011545\_VA\DeptofRails-PublicTransportation\0239056\_RAPS-4\AltDev-ConceptEng\map\_docs\mxd\FEIS\PreAltMapbook\DC2RVA\_FEISMapbook\_Final\_11x17.mxd | Last Updated: 03.13.2019



1 inch = 200 feet  
@ 11 x 17 inches

Projection: Lambert Conformal Conic  
State Plane Virginia North FIPS 4501 Feet  
North American Datum of 1983

Imagery/Basemap Source: 2015-2017 VGIN  
Aerial Imagery; ESRI World Transportation

#### Legend

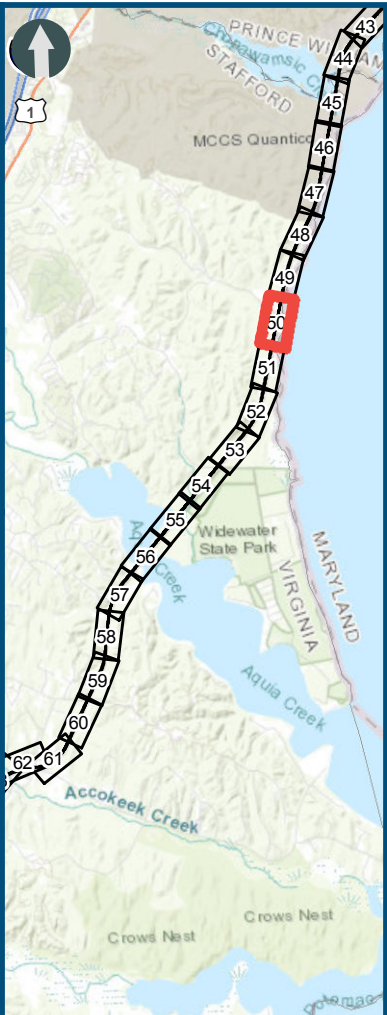
- Permanent Limits of Disturbance
- Temporary Limits of Disturbance
- CSXT Mileposts
- Control Point/Interlocking
- Track - Existing
- Track - Improve Existing
- Track - Proposed
- Track - Proposed by others
- Track - Remove
- Crossover/Turnout - Proposed
- Crossover/Turnout - Proposed by others
- Crossover/Turnout - Remove
- Retaining Walls
- Retaining Walls - Proposed by others
- Bridge
- Bridge - Proposed by others
- Roadway
- Roadway - Proposed by others
- Edge of Pavement
- Roadway Centerline
- Median Separators
- Gate/Quad Gate
- Locking Gate
- Crossing - Closure
- Crossing - Grade Separate
- Crossing - Four-Quadrant Gate
- Crossing - Gates with Center Median Treatment
- Crossing - Locking Gate (Private)
- SWM Facilities
- Drainage Culvert Crossings
- Drainage Directional Arrows
- Stations
- Station Platform - Existing
- Station Platform - Proposed
- Station Platform - Proposed by others
- Station Platform - Remove
- Building/Structure
- CSXT ROW (County Parcel Data)
- City/County Parcels
- City/County Boundary

#### Preferred Alternative Mapbook

Sheet 49 of 217



\\dlsmain\GIS\_DATA\GIS\Projects\011545\_VA Dept of Railis-Public\Transportation\0239056\_RAPS-4\AltDev-Concept\Eng\map\_docs\mxd\FEIS\PreAlt\Mapbook\DC2RVA\_FEISMapbook\_Final\_11x17.mxd | Last Updated: 03.13.2019



0 100 200  
Feet  
1 inch = 200 feet  
@ 11 x 17 inches  
Projection: Lambert Conformal Conic  
State Plane Virginia North FIPS 4501 Feet  
North American Datum of 1983  
Imagery/Basemap Source: 2015-2017 VGIN  
Aerial Imagery; ESRI World Transportation

Legend

- Permanent Limits of Disturbance
- Temporary Limits of Disturbance
- CSXT Mileposts
- Control Point/Interlocking
- Track - Existing
- Track - Improve Existing
- Track - Proposed
- Track - Proposed by others
- Track - Remove
- Crossover/Turnout - Proposed
- Crossover/Turnout - Proposed by others
- Crossover/Turnout - Remove
- Retaining Walls
- Retaining Walls - Proposed by others
- Bridge
- Bridge - Proposed by others
- Roadway
- Roadway - Proposed by others
- Edge of Pavement
- Roadway Centerline
- Median Separators
- Gate/Quad Gate
- Locking Gate
- Crossing - Closure
- Crossing - Grade Separate
- Crossing - Four-Quadrant Gate
- Crossing - Gates with Center Median Treatment
- Crossing - Locking Gate (Private)
- SWM Facilities
- Drainage Culvert Crossings
- Drainage Directional Arrows
- Stations
- Station Platform - Existing
- Station Platform - Proposed
- Station Platform - Proposed by others
- Station Platform - Remove
- Building/Structure
- CSXT ROW (County Parcel Data)
- City/County Parcels
- City/County Boundary

Preferred Alternative  
Mapbook

Sheet 50 of 217