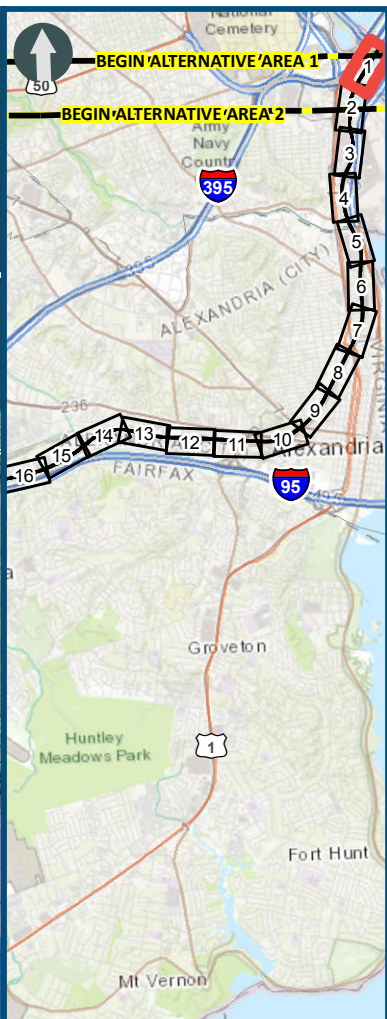


\\dlmain\GIS\_DATA\GIS\Projects\011545\_VA Dept of Rail\Public\Transporation\0239056\_RAPS-4\AI\Dev-Concept\Eng\map\_docs\mxd\FEIS\Map\_M-1\_WetlandsStreams\_11x17.mxd | Last Updated: 12.06.2018



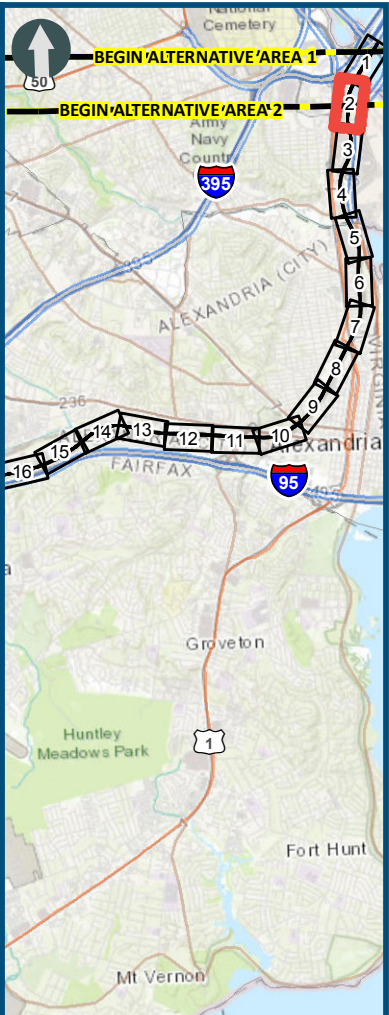
0 100 200  
Feet  
1 inch = 200 feet  
@ 11 x 17 inches  
Projection: Lambert Conformal Conic  
State Plane Virginia North FIPS 4501 Feet  
North American Datum of 1983  
Imagery/Basemap Source: 2015-2017 VGIN  
Aerial Imagery; ESRI World Transportation

#### Legend

- Permanent Limits of Disturbance
  - Temporary Limits of Disturbance
  - CSXT Mileposts
  - Track - Existing
  - Existing Stations
  - Culverts
  - Delineated Stream Impacts
  - Delineated Streams
  - Major River Impacts
  - Waterbodies
  - Delineated Wetlands
  - Delineated Wetland Impacts
  - Resource Protection Areas
  - Resource Protection Area Impacts
  - Impaired Waters
  - CSXT ROW (County Parcel Data)
  - City/County Parcels
  - City/County Boundary
- (Virginia Department of Environmental Quality)

**Figure M-1**  
**Preferred Alternative –**  
**Potential Impacts to**  
**Wetlands and Streams**  
**Sheet 1 of 217**



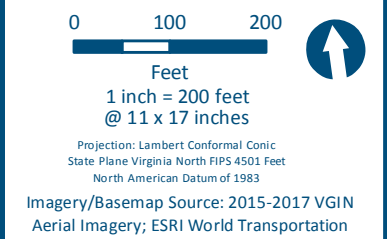
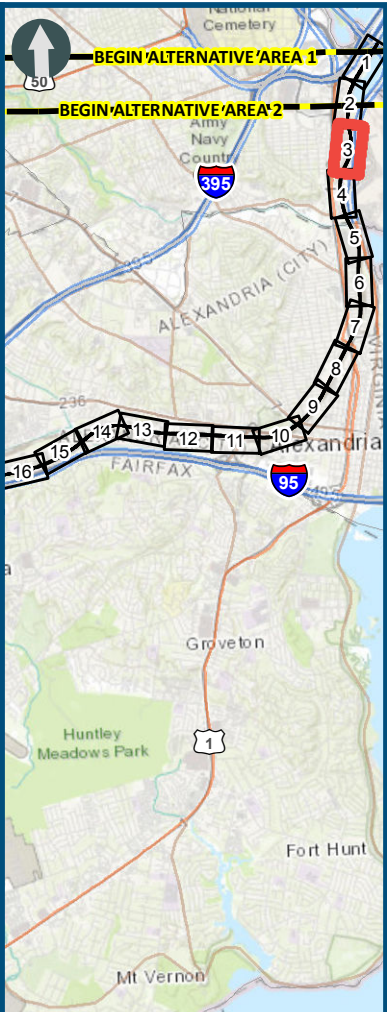


0 100 200  
Feet  
1 inch = 200 feet  
@ 11 x 17 inches  
Projection: Lambert Conformal Conic  
State Plane Virginia North FIPS 4501 Feet  
North American Datum of 1983  
Imagery/Basemap Source: 2015-2017 VGIN  
Aerial Imagery; ESRI World Transportation

- Legend**
- Permanent Limits of Disturbance
  - Temporary Limits of Disturbance
  - CSXT Mileposts
  - Track - Existing
  - Existing Stations
  - Culverts
  - Delineated Stream Impacts
  - Delineated Streams
  - Major River Impacts
  - Waterbodies
  - Delineated Wetlands
  - Delineated Wetland Impacts
  - Resource Protection Areas
  - Resource Protection Area Impacts
  - Impaired Waters (Virginia Department of Environmental Quality)
  - CSXT ROW (County Parcel Data)
  - City/County Parcels
  - City/County Boundary

**Figure M-1**  
**Preferred Alternative –**  
**Potential Impacts to**  
**Wetlands and Streams**  
**Sheet 2 of 217**





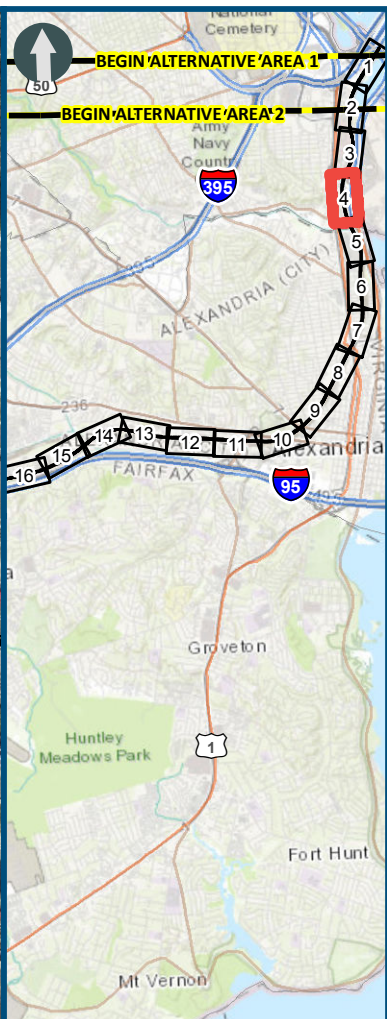
- Legend**
- Permanent Limits of Disturbance
  - Temporary Limits of Disturbance
  - CSXT Mileposts
  - Track - Existing
  - Existing Stations
  - Culverts
  - Delineated Stream Impacts
  - Delineated Streams
  - Major River Impacts
  - Waterbodies
  - Delineated Wetlands
  - Delineated Wetland Impacts
  - Resource Protection Areas
  - Resource Protection Area Impacts
  - Impaired Waters
  - CSXT ROW (County Parcel Data)
  - City/County Parcels
  - City/County Boundary
- (Virginia Department of Environmental Quality)

**Figure M-1**  
**Preferred Alternative –**  
**Potential Impacts to**  
**Wetlands and Streams**  
**Sheet 3 of 217**

\\dlsmain\GIS\_DATA\GIS\Projects\011545\_VA Dept of Rail-Public Transportation\0239056\_RAPS-4\AI\Dev-Concept\Eng\map\_docs\mxd\FEIS\Map\_WFEIS\_M-1\_WetlandsStreams\_11x17.mxd | Last Updated: 12/06/2018



\\dlmain\GIS\_DATA\GIS\Projects\011545\_VA Dept of Rail-Public Transportation\0239056\_RAPS-4\AIDev-ConceptEng\map\_docs\mxd\FEIS\Map\_M-1\_WetlandsStreams\_11x17.mxd | Last Updated: 12.06.2018



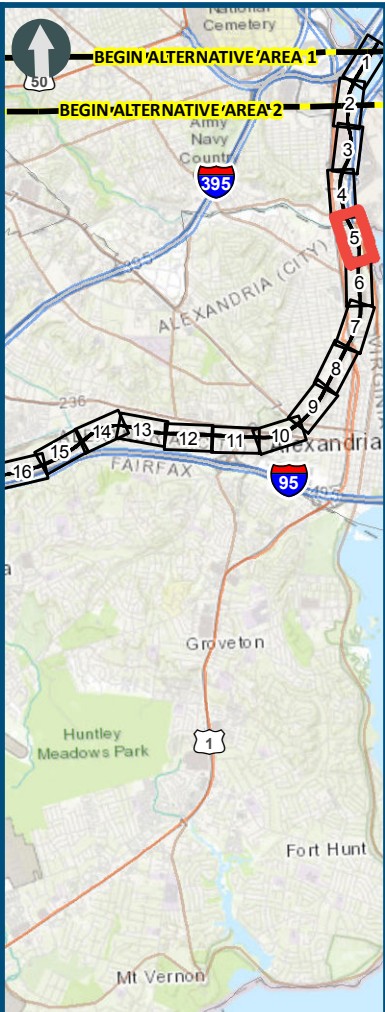
0 100 200  
Feet  
1 inch = 200 feet  
@ 11 x 17 inches  
Projection: Lambert Conformal Conic  
State Plane Virginia North FIPS 4501 Feet  
North American Datum of 1983  
Imagery/Basemap Source: 2015-2017 VGIN  
Aerial Imagery; ESRI World Transportation

#### Legend

- Permanent Limits of Disturbance
  - Temporary Limits of Disturbance
  - CSXT Mileposts
  - Track - Existing
  - Existing Stations
  - Culverts
  - Delineated Stream Impacts
  - Delineated Streams
  - Major River Impacts
  - Waterbodies
  - Delineated Wetlands
  - Delineated Wetland Impacts
  - Resource Protection Areas
  - Resource Protection Area Impacts
  - Impaired Waters
  - CSXT ROW (County Parcel Data)
  - City/County Parcels
  - City/County Boundary
- (Virginia Department of Environmental Quality)

**Figure M-1**  
**Preferred Alternative –**  
**Potential Impacts to**  
**Wetlands and Streams**  
**Sheet 4 of 217**





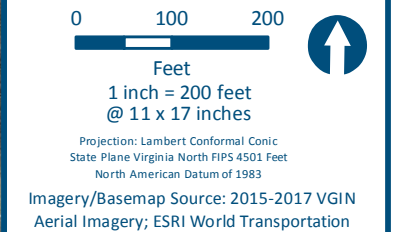
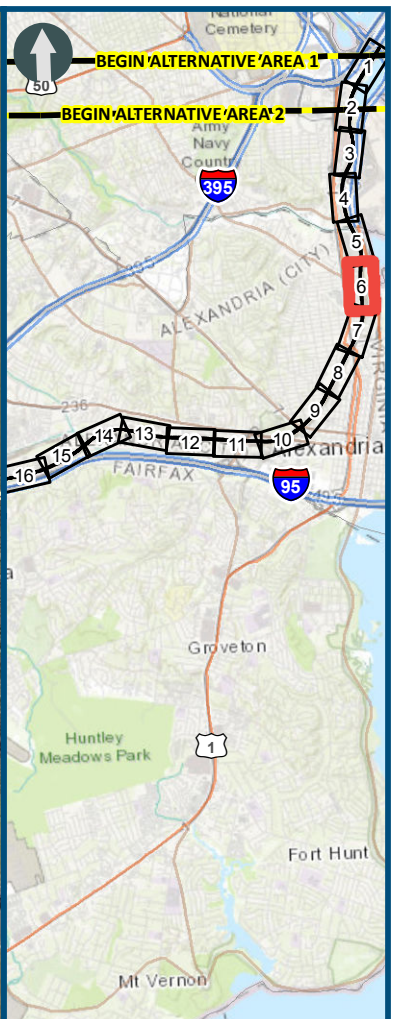
0 100 200  
Feet  
1 inch = 200 feet  
@ 11 x 17 inches  
Projection: Lambert Conformal Conic  
State Plane Virginia North FIPS 4501 Feet  
North American Datum of 1983  
Imagery/Basemap Source: 2015-2017 VGIN  
Aerial Imagery; ESRI World Transportation

- Legend**
- Permanent Limits of Disturbance
  - Temporary Limits of Disturbance
  - CSXT Mileposts
  - Track - Existing
  - Existing Stations
  - Culverts
  - Delineated Stream Impacts
  - Delineated Streams
  - Major River Impacts
  - Waterbodies
  - Delineated Wetlands
  - Delineated Wetland Impacts
  - Resource Protection Areas
  - Resource Protection Area Impacts
  - Impaired Waters (Virginia Department of Environmental Quality)
  - CSXT ROW (County Parcel Data)
  - City/County Parcels
  - City/County Boundary

**Figure M-1**  
**Preferred Alternative –**  
**Potential Impacts to**  
**Wetlands and Streams**  
**Sheet 5 of 217**



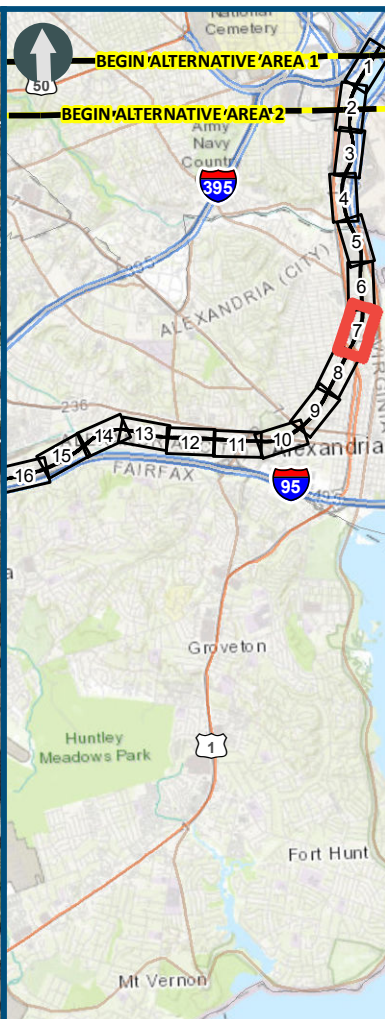
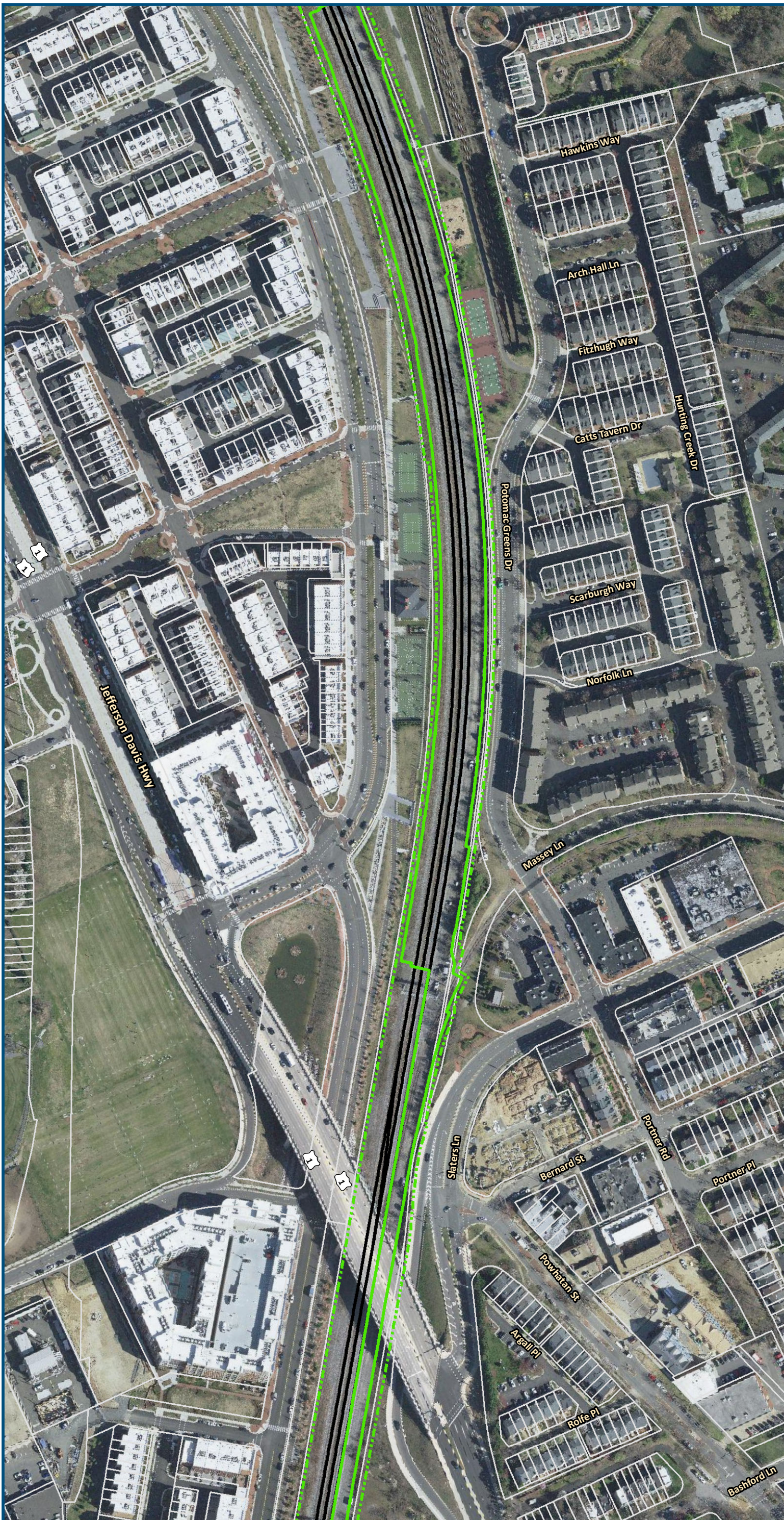
\\dlsmain\GIS\_DATA\GIS\Projects\011545\_VA Dept of Rail-Public\Transporation\0239056\_RAPS-4\AI\Dev-Concept\Eng\map\_docs\mxd\FEIS\Map\_WFEIS\_M-1\_WetlandsStreams\_11x17.mxd | Last Updated: 12.06.2018



**Figure M-1**  
**Preferred Alternative –**  
**Potential Impacts to**  
**Wetlands and Streams**  
**Sheet 6 of 217**



\\dismain\GIS\_DATA\GIS\Projects\011545\_VA Dept of Rail-Public Transportation\0239056\_RAPS-4\AI Dev-Concept\Eng\map\_docs\mxd\FEIS\Map\_M-1\_WetlandsStreams\_11x17.mxd | Last Updated: 12.06.2018



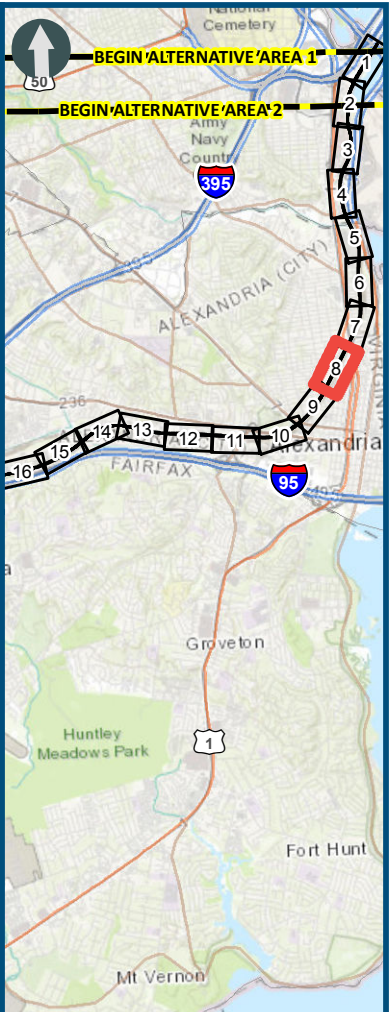
0 100 200  
Feet  
1 inch = 200 feet  
@ 11 x 17 inches  
Projection: Lambert Conformal Conic  
State Plane Virginia North FIPS 4501 Feet  
North American Datum of 1983  
Imagery/Basemap Source: 2015-2017 VGIN  
Aerial Imagery; ESRI World Transportation

#### Legend

- Permanent Limits of Disturbance
- Temporary Limits of Disturbance
- CSXT Mileposts
- Track - Existing
- Existing Stations
- Culverts
- Delineated Stream Impacts
- Delineated Streams
- Major River Impacts
- Waterbodies
- Delineated Wetlands
- Delineated Wetland Impacts
- Resource Protection Areas
- Resource Protection Area Impacts
- Impaired Waters (Virginia Department of Environmental Quality)
- CSXT ROW (County Parcel Data)
- City/County Parcels
- City/County Boundary

**Figure M-1**  
**Preferred Alternative –**  
**Potential Impacts to**  
**Wetlands and Streams**  
**Sheet 7 of 217**



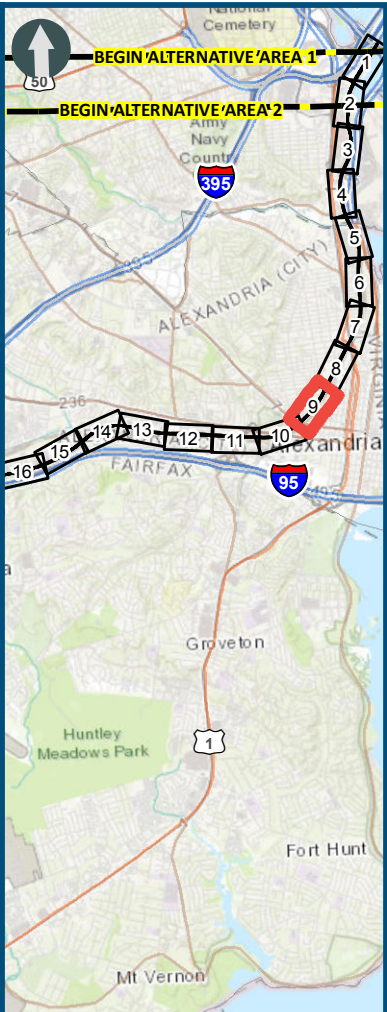
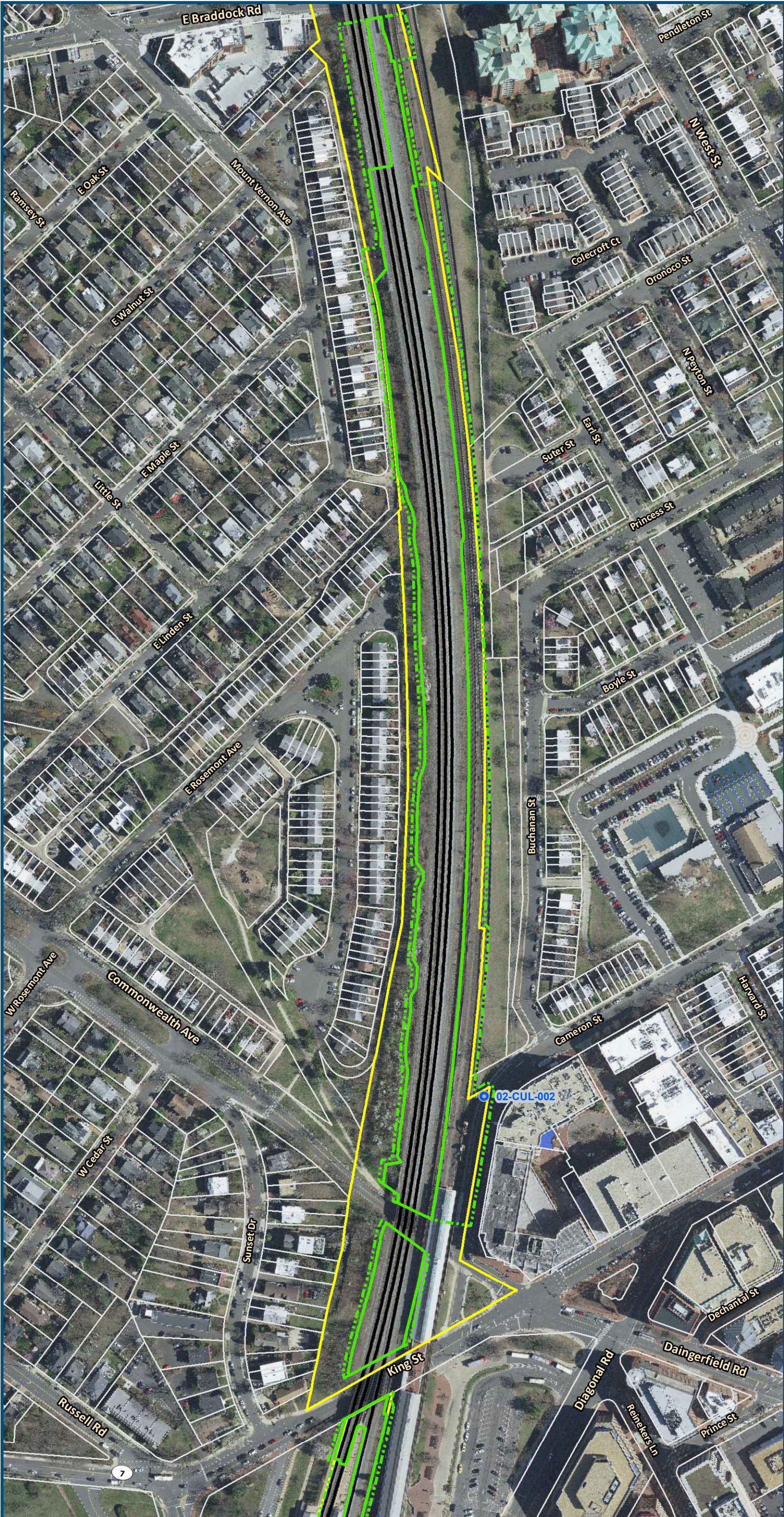


0 100 200  
Feet  
1 inch = 200 feet  
@ 11 x 17 inches  
Projection: Lambert Conformal Conic  
State Plane Virginia North FIPS 4501 Feet  
North American Datum of 1983  
Imagery/Basemap Source: 2015-2017 VGIN  
Aerial Imagery; ESRI World Transportation

- Legend**
- Permanent Limits of Disturbance
  - Temporary Limits of Disturbance
  - CSXT Mileposts
  - Track - Existing
  - Existing Stations
  - Culverts
  - Delineated Stream Impacts
  - Delineated Streams
  - Major River Impacts
  - Waterbodies
  - Delineated Wetlands
  - Delineated Wetland Impacts
  - Resource Protection Areas
  - Resource Protection Area Impacts
  - Impaired Waters
  - CSXT ROW (County Parcel Data)
  - City/County Parcels
  - City/County Boundary
- (Virginia Department of Environmental Quality)

**Figure M-1**  
**Preferred Alternative –**  
**Potential Impacts to**  
**Wetlands and Streams**  
**Sheet 8 of 217**



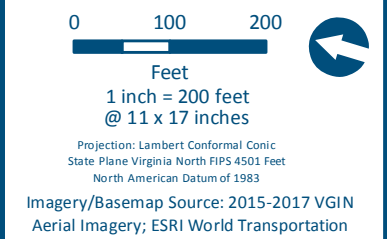
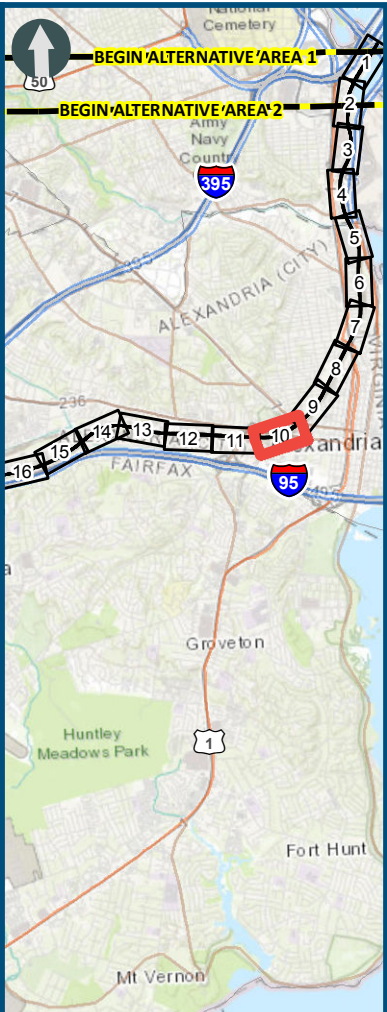
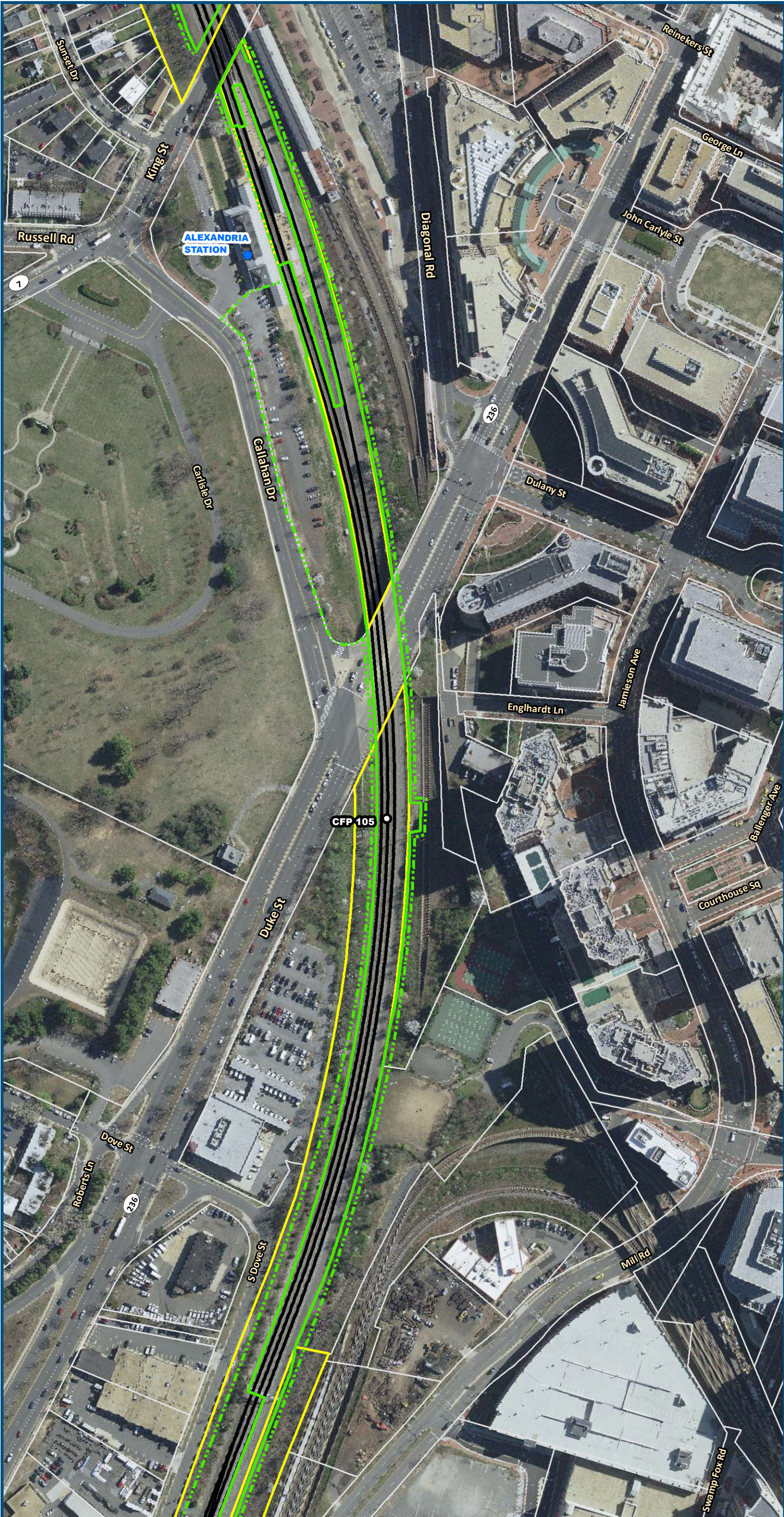


0 100 200  
Feet  
1 inch = 200 feet  
@ 11 x 17 inches  
Projection: Lambert Conformal Conic  
State Plane Virginia North FIPS 4501 Feet  
North American Datum of 1983  
Imagery/Basemap Source: 2015-2017 VGIN  
Aerial Imagery; ESRI World Transportation

- Legend**
- Permanent Limits of Disturbance
  - Temporary Limits of Disturbance
  - CSXT Mileposts
  - Track - Existing
  - Existing Stations
  - Culverts
  - Delineated Stream Impacts
  - Delineated Streams
  - Major River Impacts
  - Waterbodies
  - Delineated Wetlands
  - Delineated Wetland Impacts
  - Resource Protection Areas
  - Resource Protection Area Impacts
  - Impaired Waters
  - CSXT ROW (County Parcel Data)
  - City/County Parcels
  - City/County Boundary
- (Virginia Department of Environmental Quality)

**Figure M-1**  
**Preferred Alternative –**  
**Potential Impacts to**  
**Wetlands and Streams**  
**Sheet 9 of 217**





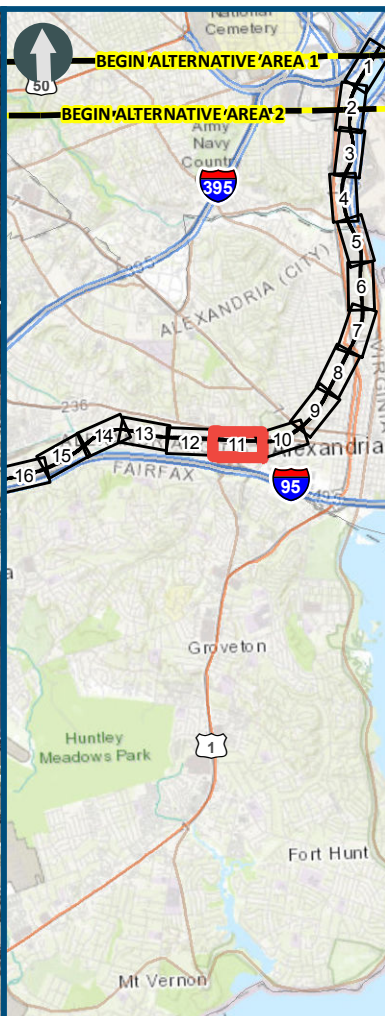
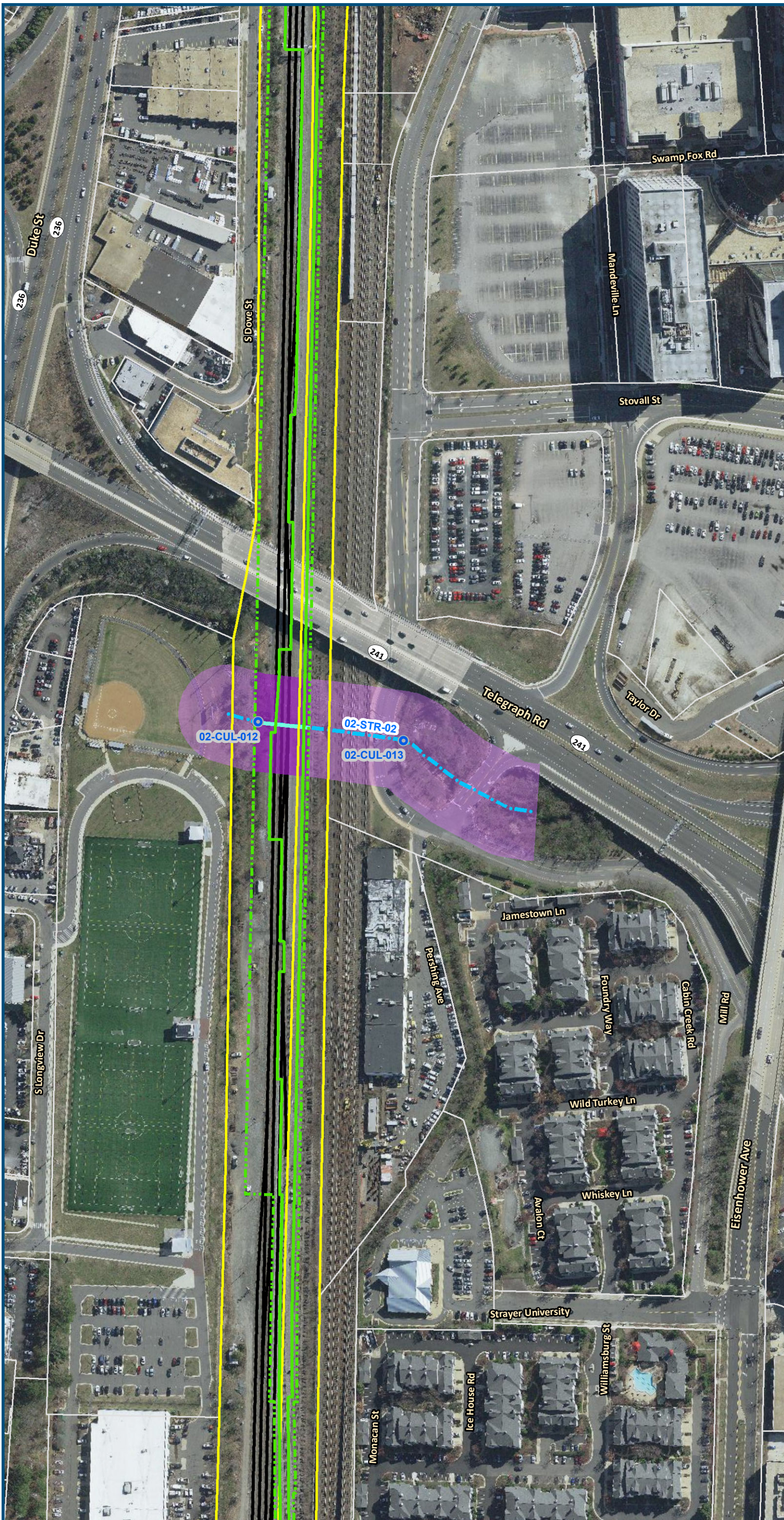
- Legend**
- Permanent Limits of Disturbance
  - Temporary Limits of Disturbance
  - CSXT Mileposts
  - Track - Existing
  - Existing Stations
  - Culverts
  - Delineated Stream Impacts
  - Delineated Streams
  - Major River Impacts
  - Waterbodies
  - Delineated Wetlands
  - Delineated Wetland Impacts
  - Resource Protection Areas
  - Resource Protection Area Impacts
  - Impaired Waters
  - CSXT ROW (County Parcel Data)
  - City/County Parcels
  - City/County Boundary
- (Virginia Department of Environmental Quality)

**Figure M-1**  
**Preferred Alternative –**  
**Potential Impacts to**  
**Wetlands and Streams**  
**Sheet 10 of 217**

\\dlmain\GIS\_DATA\GIS\Projects\011545\_VA\Dev-Concept\EngMap\_docs\mxd\FEIS\Map\_WFEIS\_M-1\_WetlandsStreams\_11x17.mxd | Last Updated: 12.06.2018



\\dlmain\GIS\_DATA\GIS\Projects\011545\_VA Dept of Rail\Public Transportation\0239056\_RAPS-4\AI\Dev-Concept\Eng\map\_docs\mxd\FEIS\Map\_1\_WetlandsStreams\_11x17.mxd | Last Updated: 12.06.2018



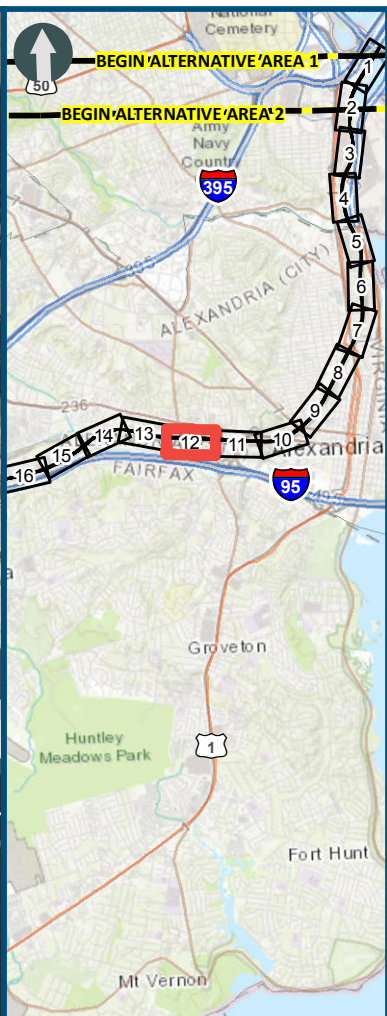
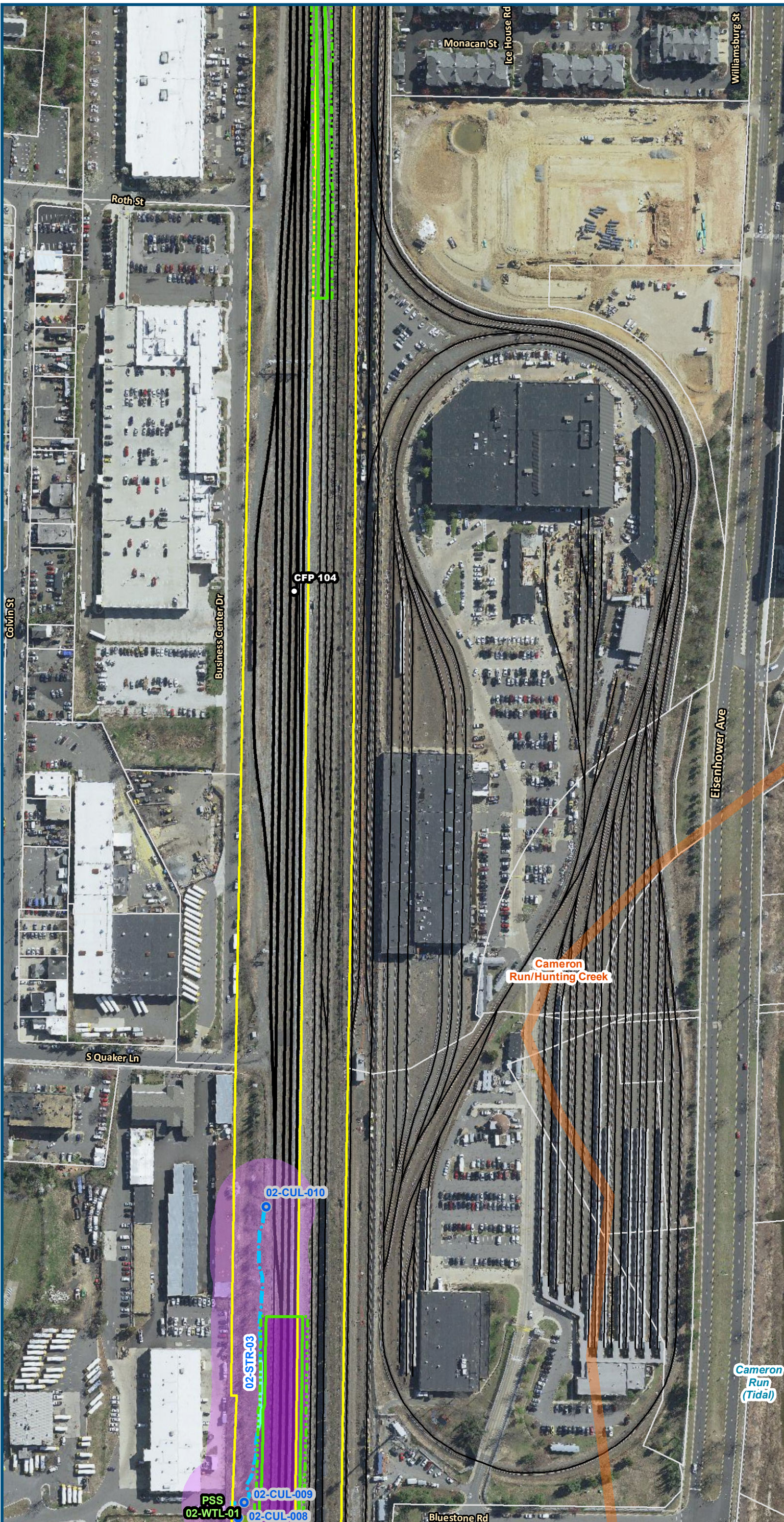
0 100 200  
Feet  
1 inch = 200 feet  
@ 11 x 17 inches  
Projection: Lambert Conformal Conic  
State Plane Virginia North FIPS 4501 Feet  
North American Datum of 1983  
Imagery/Basemap Source: 2015-2017 VGIN  
Aerial Imagery; ESRI World Transportation

- Legend**
- Permanent Limits of Disturbance
  - Temporary Limits of Disturbance
  - CSXT Mileposts
  - Track - Existing
  - Existing Stations
  - Culverts
  - Delineated Stream Impacts
  - Delineated Streams
  - Major River Impacts
  - Waterbodies
  - Delineated Wetlands
  - Delineated Wetland Impacts
  - Resource Protection Areas
  - Resource Protection Area Impacts
  - Impaired Waters
  - CSXT ROW (County Parcel Data)
  - City/County Parcels
  - City/County Boundary
- (Virginia Department of Environmental Quality)

**Figure M-1**  
**Preferred Alternative –**  
**Potential Impacts to**  
**Wetlands and Streams**  
**Sheet 11 of 217**



\\dlmain\GIS\_DATA\GIS\Projects\011545\_VA Dept of Rail-Public Transportation\0239056\_RAPS-4\Dev-Concept\Eng\map\_docs\mxd\FEIS\Map\_M-1\_WetlandsStreams\_11x17.mxd | Last Updated: 12.06.2018

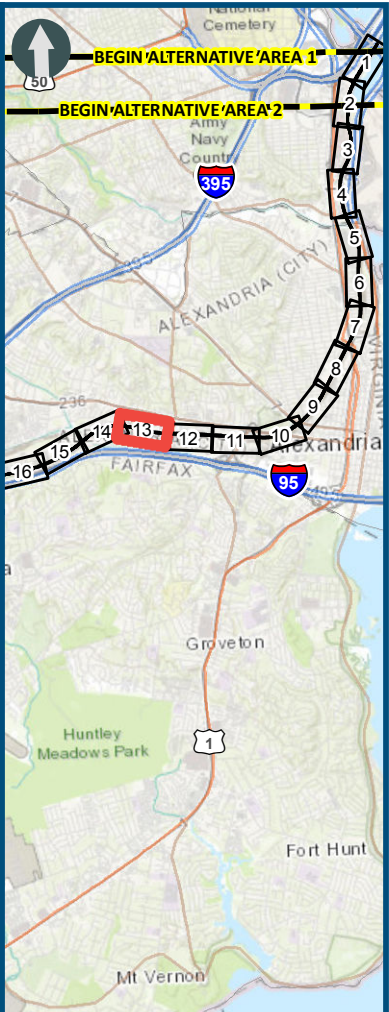
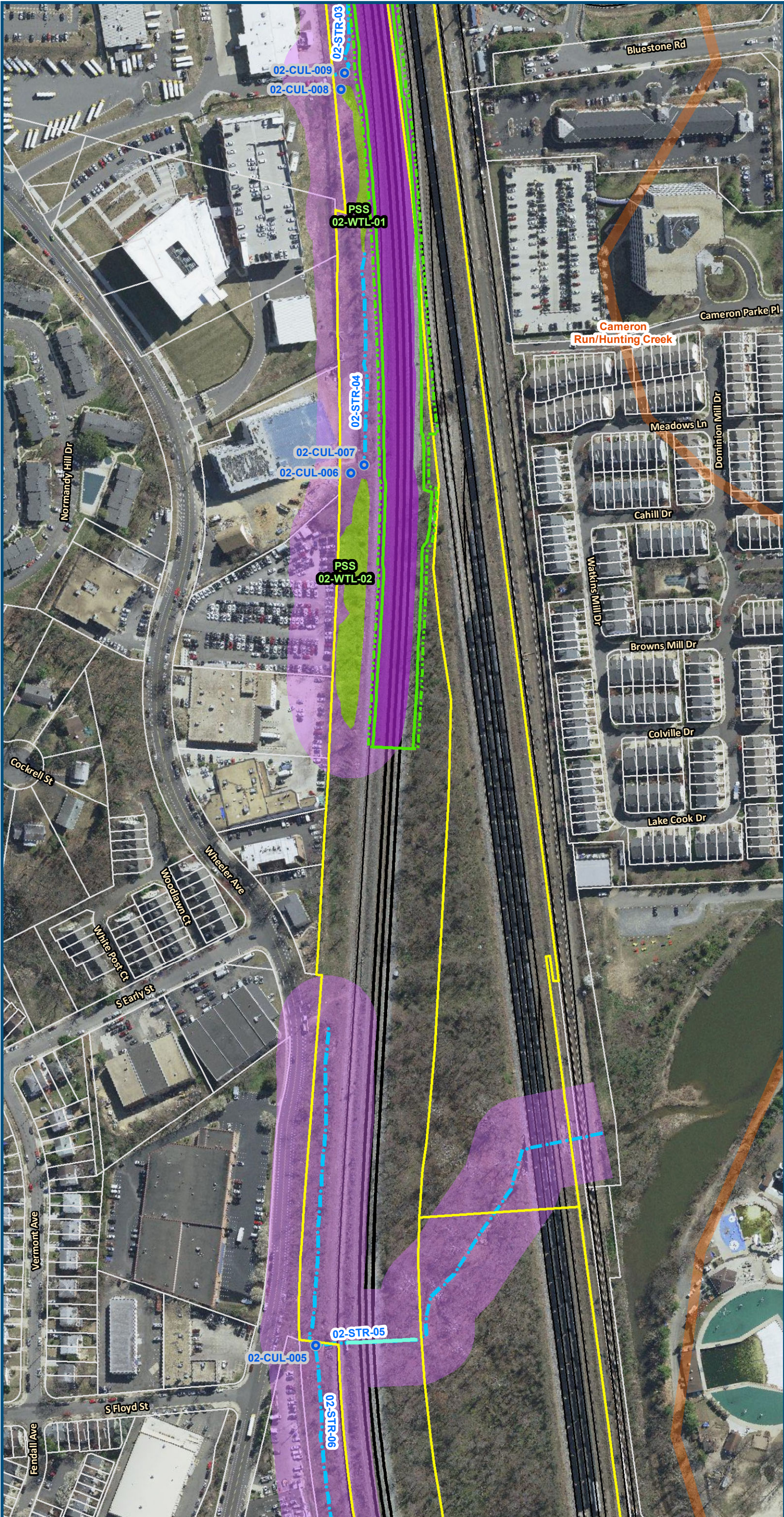


0 100 200  
Feet  
1 inch = 200 feet  
@ 11 x 17 inches  
Projection: Lambert Conformal Conic  
State Plane Virginia North FIPS 4501 Feet  
North American Datum of 1983  
Imagery/Basemap Source: 2015-2017 VGIN  
Aerial Imagery; ESRI World Transportation

- Legend**
- Permanent Limits of Disturbance
  - Temporary Limits of Disturbance
  - CSXT Mileposts
  - Track - Existing
  - Existing Stations
  - Culverts
  - Delineated Stream Impacts
  - Delineated Streams
  - Major River Impacts
  - Waterbodies
  - Delineated Wetlands
  - Delineated Wetland Impacts
  - Resource Protection Areas
  - Resource Protection Area Impacts
  - Impaired Waters (Virginia Department of Environmental Quality)
  - CSXT ROW (County Parcel Data)
  - City/County Parcels
  - City/County Boundary

**Figure M-1**  
**Preferred Alternative –**  
**Potential Impacts to**  
**Wetlands and Streams**  
**Sheet 12 of 217**



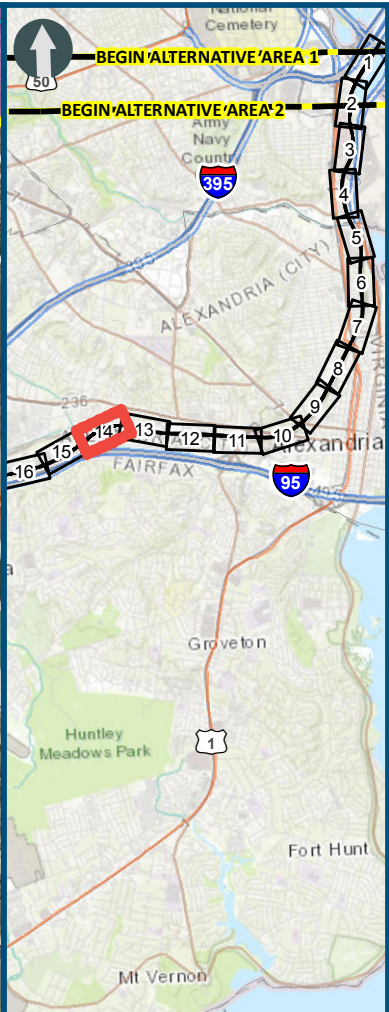
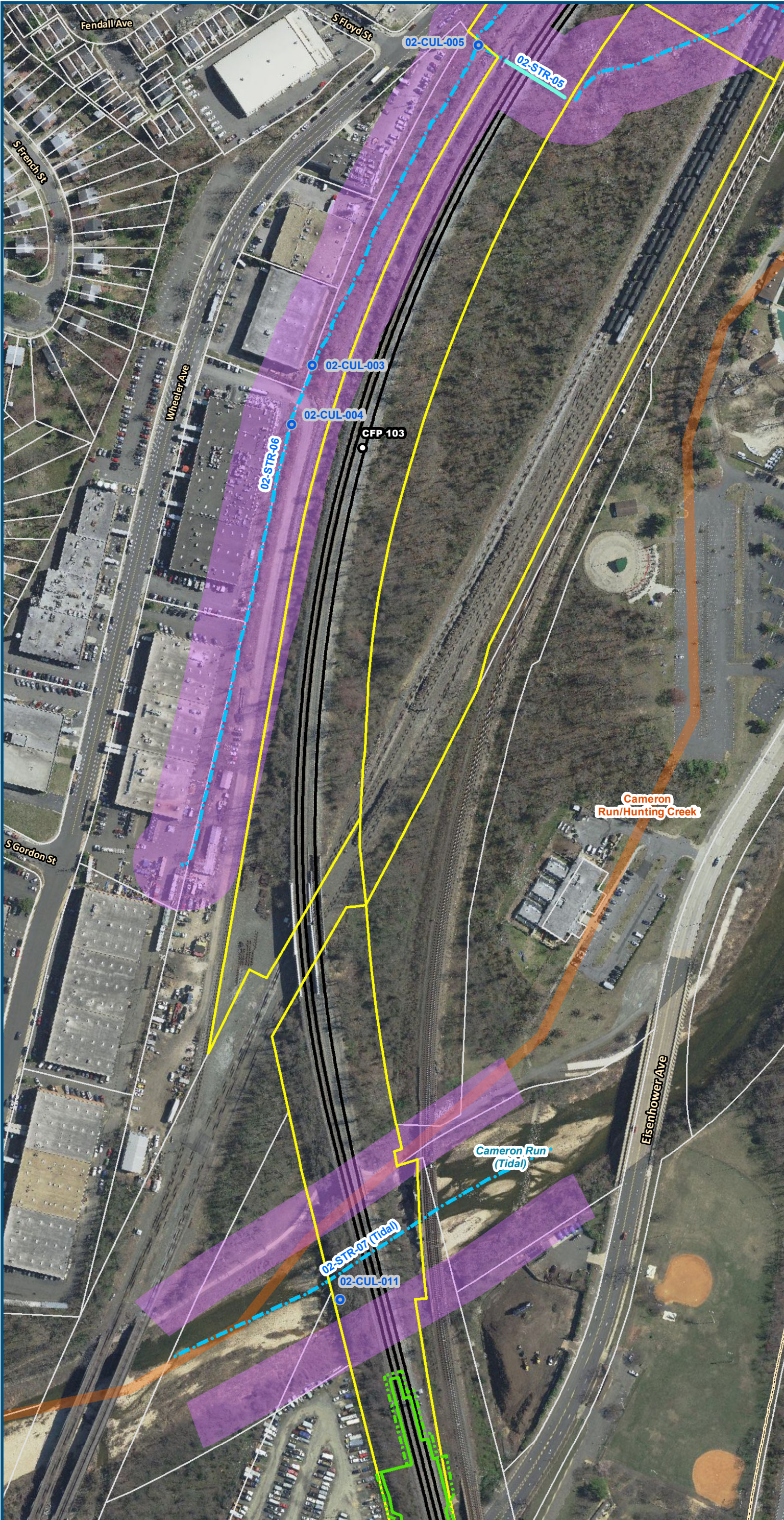


0 100 200  
Feet  
1 inch = 200 feet  
@ 11 x 17 inches  
Projection: Lambert Conformal Conic  
State Plane Virginia North FIPS 4501 Feet  
North American Datum of 1983  
Imagery/Basemap Source: 2015-2017 VGIN  
Aerial Imagery; ESRI World Transportation

- Legend**
- Permanent Limits of Disturbance
  - Temporary Limits of Disturbance
  - CSXT Mileposts
  - Track - Existing
  - Existing Stations
  - Culverts
  - Delineated Stream Impacts
  - Delineated Streams
  - Major River Impacts
  - Waterbodies
  - Delineated Wetlands
  - Delineated Wetland Impacts
  - Resource Protection Areas
  - Resource Protection Area Impacts
  - Impaired Waters (Virginia Department of Environmental Quality)
  - CSXT ROW (County Parcel Data)
  - City/County Parcels
  - City/County Boundary

**Figure M-1**  
**Preferred Alternative –**  
**Potential Impacts to**  
**Wetlands and Streams**  
**Sheet 13 of 217**





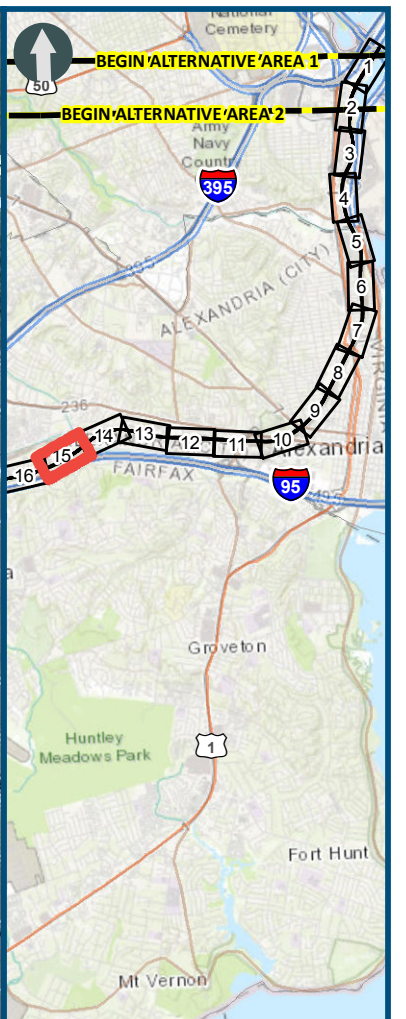
0 100 200  
Feet  
1 inch = 200 feet  
@ 11 x 17 inches  
Projection: Lambert Conformal Conic  
State Plane Virginia North FIPS 4501 Feet  
North American Datum of 1983  
Imagery/Basemap Source: 2015-2017 VGIN  
Aerial Imagery; ESRI World Transportation

- Legend**
- Permanent Limits of Disturbance
  - Temporary Limits of Disturbance
  - CSXT Mileposts
  - Track - Existing
  - Existing Stations
  - Culverts
  - Delineated Stream Impacts
  - Delineated Streams
  - Major River Impacts
  - Waterbodies
  - Delineated Wetlands
  - Delineated Wetland Impacts
  - Resource Protection Areas
  - Resource Protection Area Impacts
  - Impaired Waters (Virginia Department of Environmental Quality)
  - CSXT ROW (County Parcel Data)
  - City/County Parcels
  - City/County Boundary

**Figure M-1**  
**Preferred Alternative –**  
**Potential Impacts to**  
**Wetlands and Streams**  
**Sheet 14 of 217**



\\dlmain\GIS\_DATA\GIS\Projects\011545\_VA Dept of Rail-Public Transportation\0239056\_RAPS-4\AIDev-ConceptEng\map\_docs\mxd\FEIS\Map\_M-1\_WetlandsStreams\_11x17.mxd | Last Updated: 12.06.2018



0 100 200  
Feet  
1 inch = 200 feet  
@ 11 x 17 inches  
Projection: Lambert Conformal Conic  
State Plane Virginia North FIPS 4501 Feet  
North American Datum of 1983  
Imagery/Basemap Source: 2015-2017 VGIN  
Aerial Imagery; ESRI World Transportation

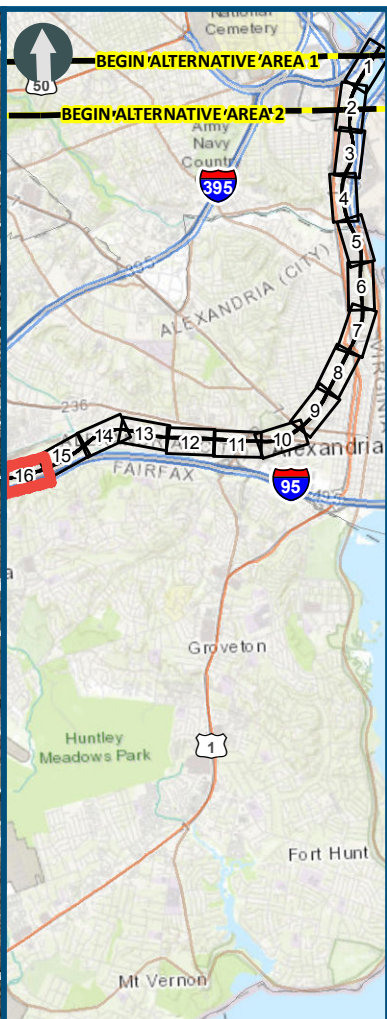
#### Legend

- Permanent Limits of Disturbance
- Temporary Limits of Disturbance
- CSXT Mileposts
- Track - Existing
- Existing Stations
- Culverts
- Delineated Stream Impacts
- Delineated Streams
- Major River Impacts
- Waterbodies
- Delineated Wetlands
- Delineated Wetland Impacts
- Resource Protection Areas
- Resource Protection Area Impacts
- Impaired Waters
- CSXT ROW (County Parcel Data)
- City/County Parcels
- City/County Boundary

**Figure M-1**  
**Preferred Alternative –**  
**Potential Impacts to**  
**Wetlands and Streams**  
**Sheet 15 of 217**



\\dlmain\GIS\_DATA\GIS\Projects\011545\_VA Dept of Rail\Public\Transportation\0239056\_RAPS-4\AI\Dev-Concept\Eng\map\_docs\mxd\FEIS\Map\_M-1\_WetlandsStreams\_11x17.mxd | Last Updated: 12.06.2018



0 100 200  
Feet  
1 inch = 200 feet  
@ 11 x 17 inches  
Projection: Lambert Conformal Conic  
State Plane Virginia North FIPS 4501 Feet  
North American Datum of 1983  
Imagery/Basemap Source: 2015-2017 VGIN  
Aerial Imagery; ESRI World Transportation

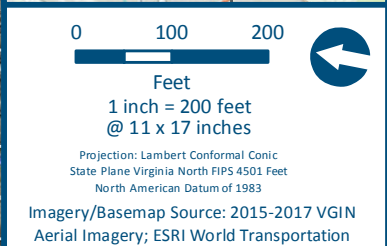
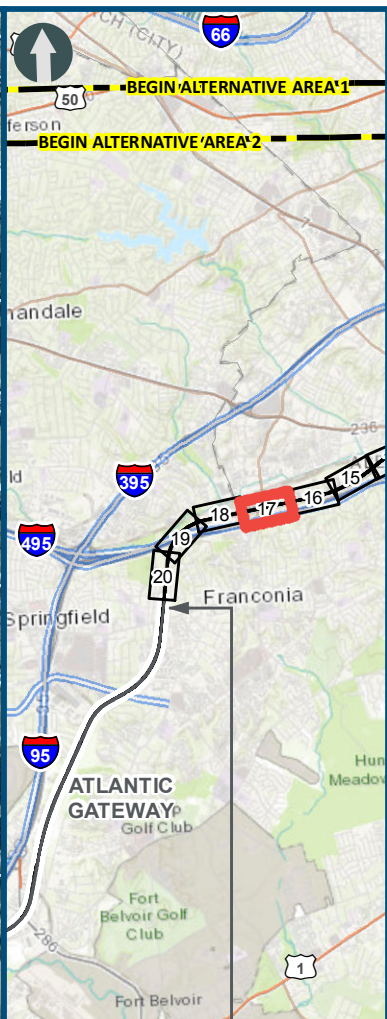
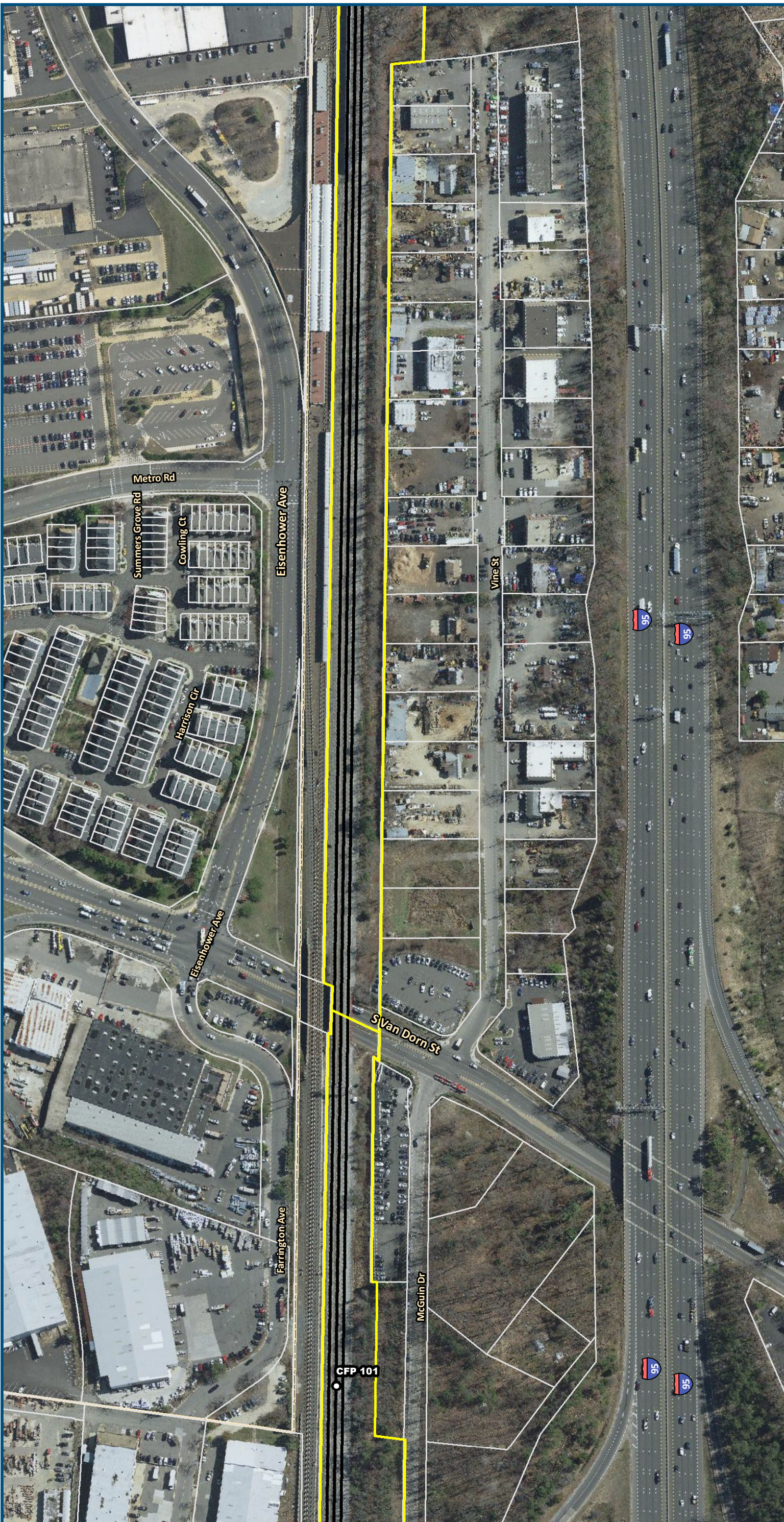
#### Legend

- Permanent Limits of Disturbance
- Temporary Limits of Disturbance
- CSXT Mileposts
- Track - Existing
- Existing Stations
- Culverts
- Delineated Stream Impacts
- Delineated Streams
- Major River Impacts
- Waterbodies
- Delineated Wetlands
- Delineated Wetland Impacts
- Resource Protection Areas
- Resource Protection Area Impacts
- Impaired Waters (Virginia Department of Environmental Quality)
- CSXT ROW (County Parcel Data)
- City/County Parcels
- City/County Boundary

**Figure M-1**  
**Preferred Alternative –**  
**Potential Impacts to**  
**Wetlands and Streams**  
**Sheet 16 of 217**



\\dlmain\GIS\_DATA\GIS\Projects\011545\_VA Dept of Rail\Public\Transportation\0239056\_RAPS-4\AI\Dev-Concept\Eng\map\_docs\mxd\FEIS\Map\_M-1\_WetlandsStreams\_11x17.mxd | Last Updated: 12/06/2018

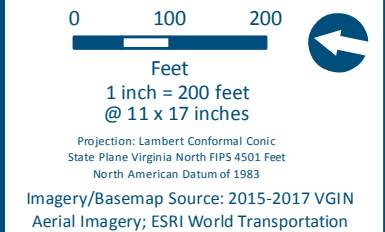
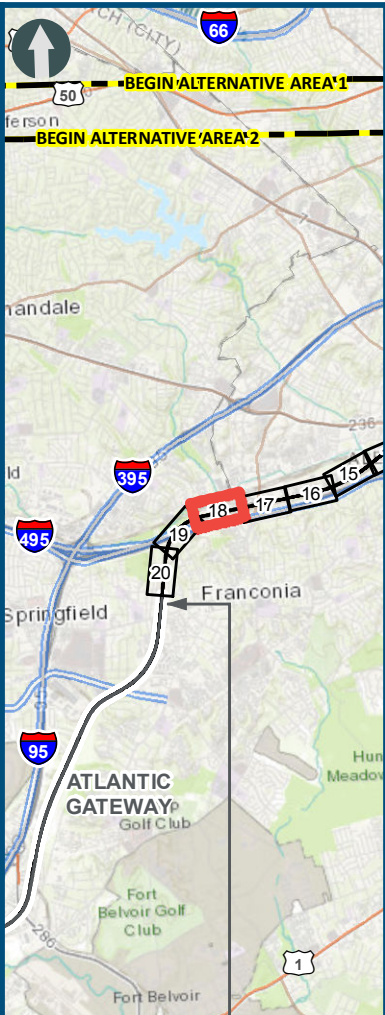
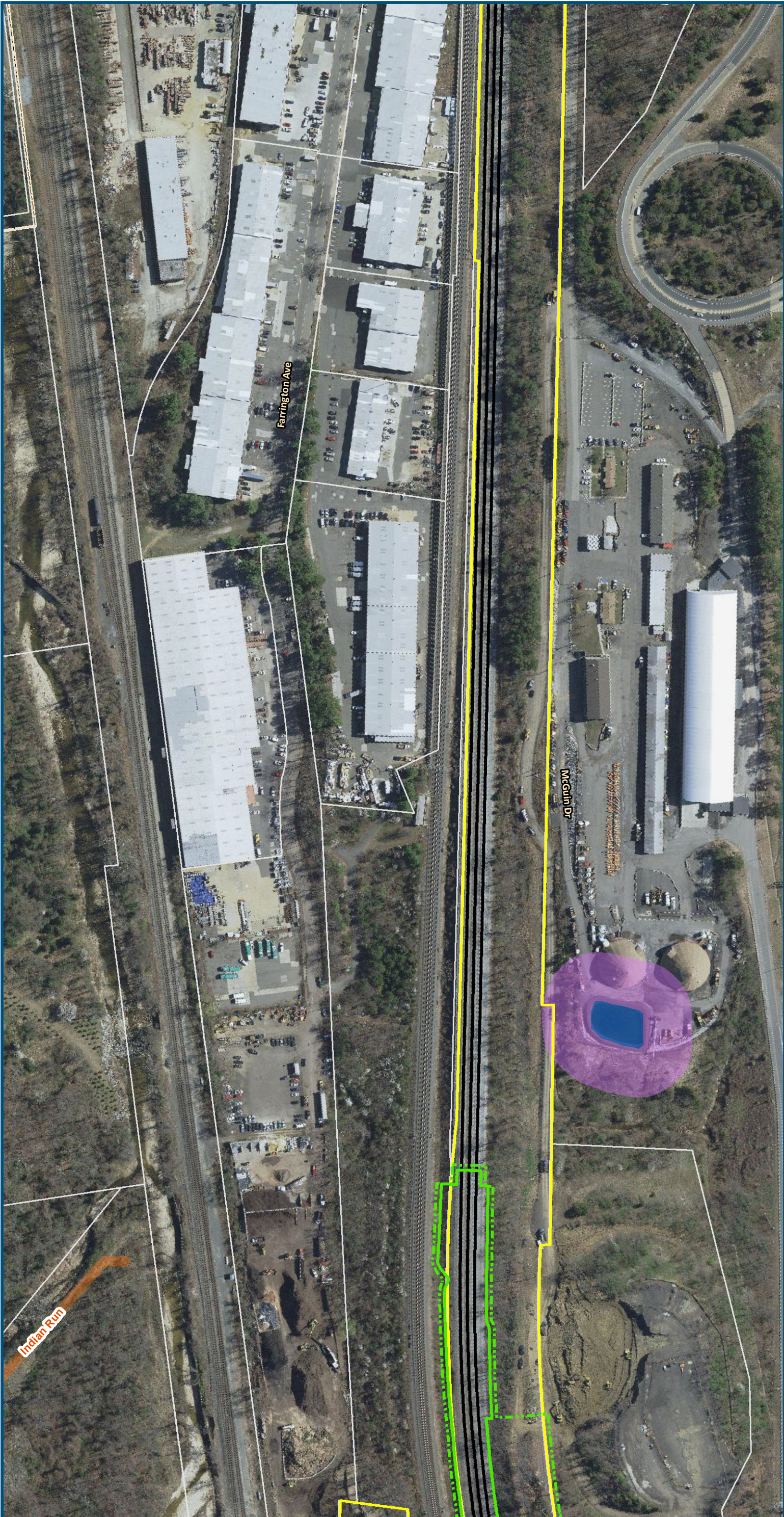


- Legend**
- Permanent Limits of Disturbance
  - Temporary Limits of Disturbance
  - CSXT Mileposts
  - Track - Existing
  - Existing Stations
  - Culverts
  - Delineated Stream Impacts
  - Delineated Streams
  - Major River Impacts
  - Waterbodies
  - Delineated Wetlands
  - Delineated Wetland Impacts
  - Resource Protection Areas
  - Resource Protection Area Impacts
  - Impaired Waters
  - CSXT ROW (County Parcel Data)
  - City/County Parcels
  - City/County Boundary
- (Virginia Department of Environmental Quality)

**Figure M-1**  
**Preferred Alternative –**  
**Potential Impacts to**  
**Wetlands and Streams**  
**Sheet 17 of 217**

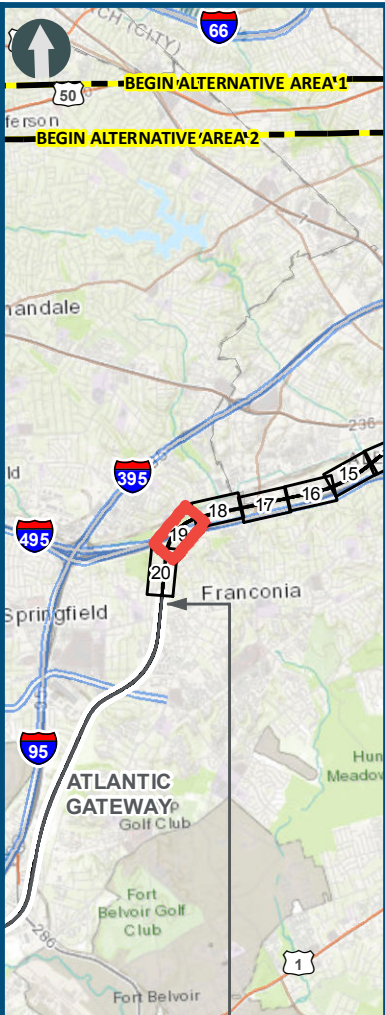
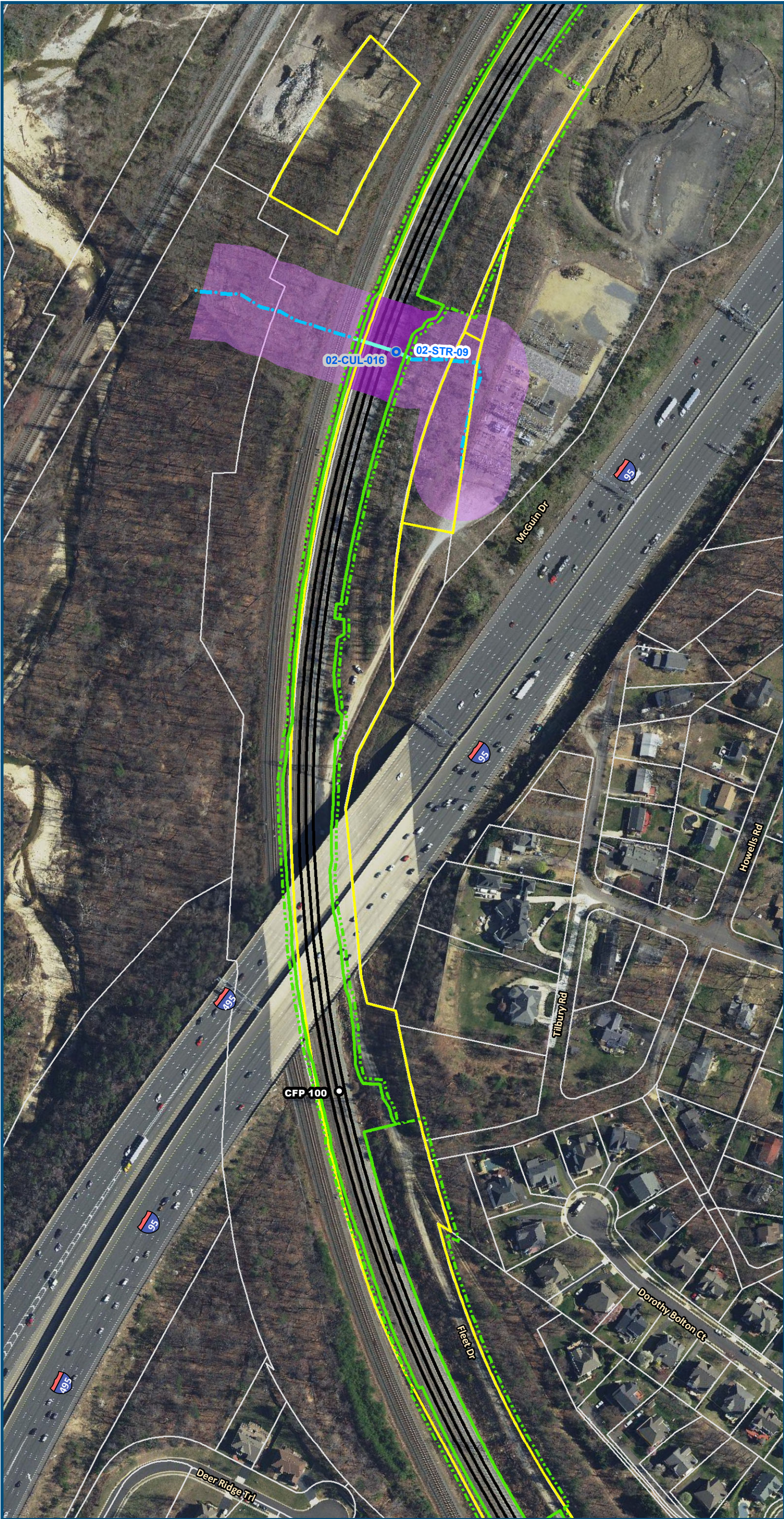


\\dlmain\GIS\_DATA\GIS\Projects\011545\_VA Dept of Rail-Public Transportation\0239056\_RAPS-4\AI\Dev-Concept\Eng\map\_docs\mxd\FEIS\Map\_M-1\_WetlandsStreams\_11x17.mxd | Last Updated: 12.06.2018



**Figure M-1**  
**Preferred Alternative –**  
**Potential Impacts to**  
**Wetlands and Streams**  
**Sheet 18 of 217**



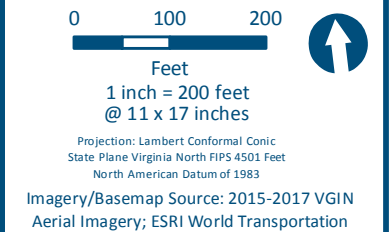
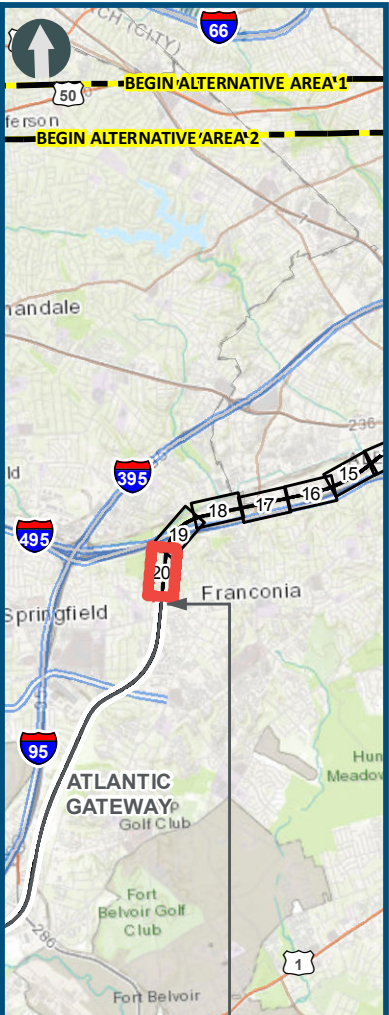
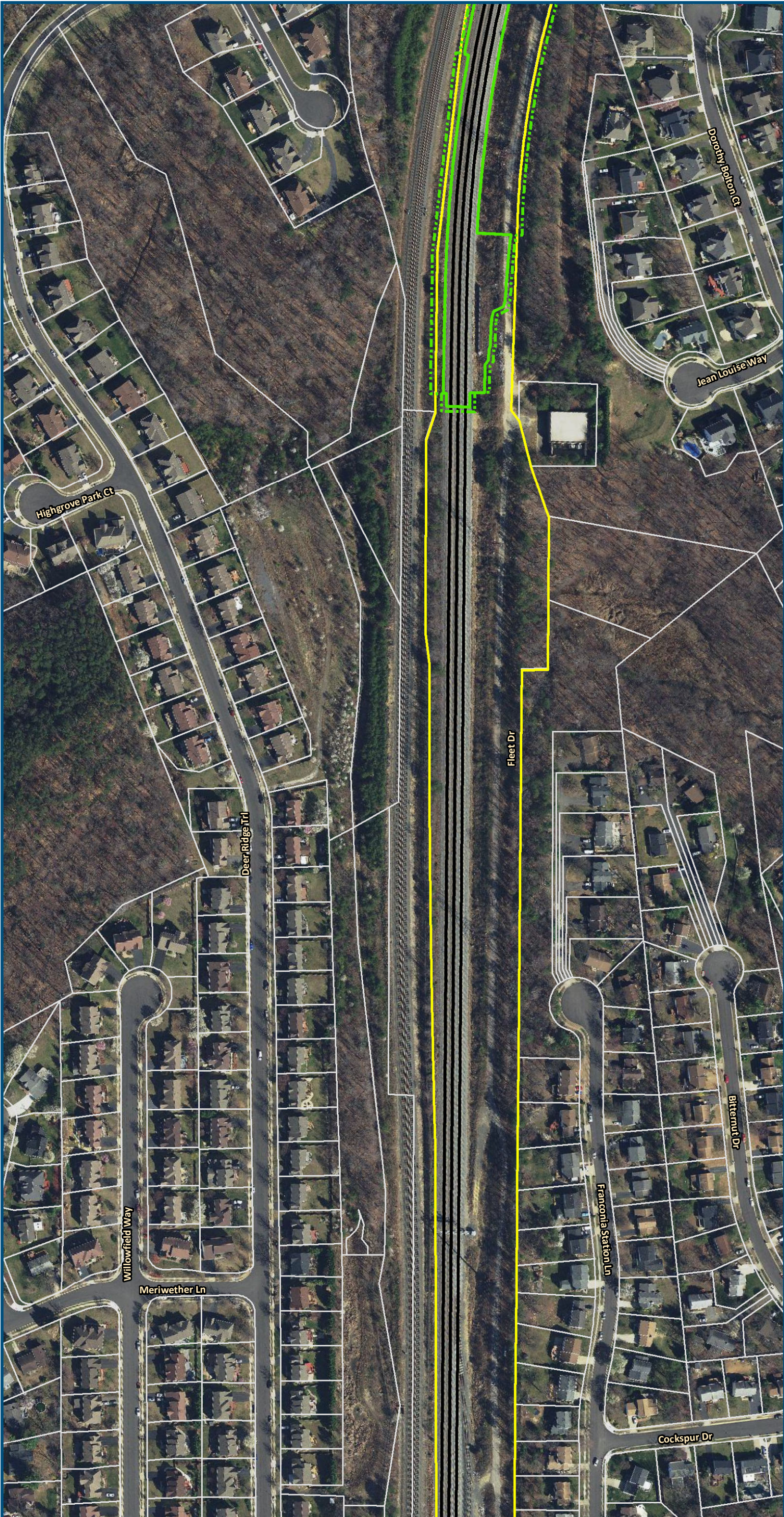


0 100 200  
Feet  
1 inch = 200 feet  
@ 11 x 17 inches  
Projection: Lambert Conformal Conic  
State Plane Virginia North FIPS 4501 Feet  
North American Datum of 1983  
Imagery/Basemap Source: 2015-2017 VGIN  
Aerial Imagery; ESRI World Transportation

- Legend**
- Permanent Limits of Disturbance
  - Temporary Limits of Disturbance
  - CSXT Mileposts
  - Track - Existing
  - Existing Stations
  - Culverts
  - Delineated Stream Impacts
  - Delineated Streams
  - Major River Impacts
  - Waterbodies
  - Delineated Wetlands
  - Delineated Wetland Impacts
  - Resource Protection Areas
  - Resource Protection Area Impacts
  - Impaired Waters (Virginia Department of Environmental Quality)
  - CSXT ROW (County Parcel Data)
  - City/County Parcels
  - City/County Boundary

**Figure M-1**  
**Preferred Alternative –**  
**Potential Impacts to**  
**Wetlands and Streams**  
**Sheet 19 of 217**



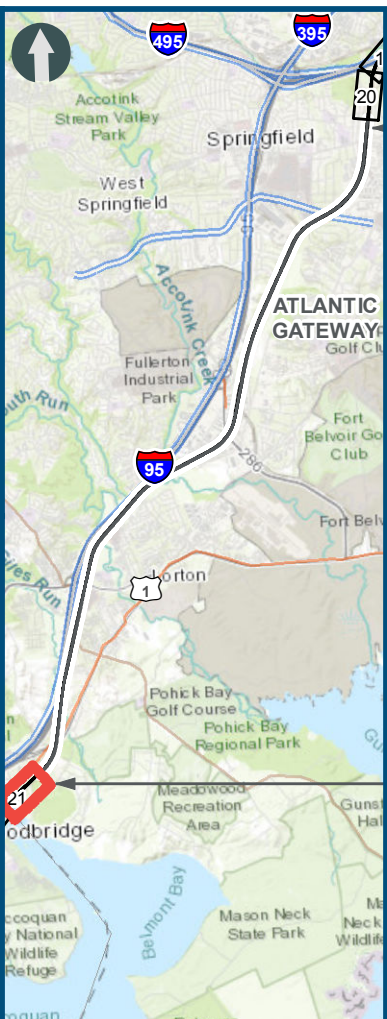
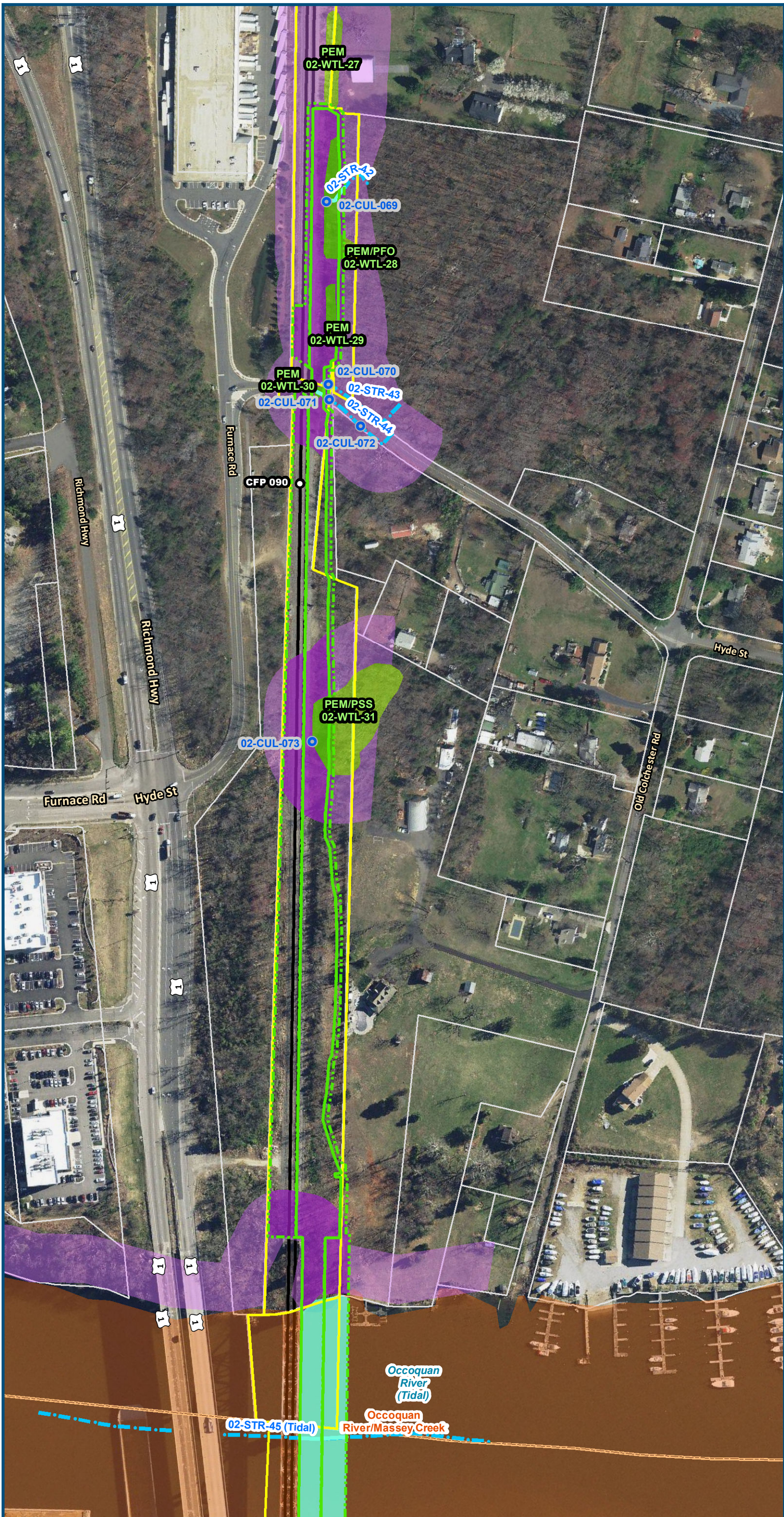


- Legend**
- Permanent Limits of Disturbance
  - Temporary Limits of Disturbance
  - CSXT Mileposts
  - Track - Existing
  - Existing Stations
  - Culverts
  - Delineated Stream Impacts
  - Delineated Streams
  - Major River Impacts
  - Waterbodies
  - Delineated Wetlands
  - Delineated Wetland Impacts
  - Resource Protection Areas
  - Resource Protection Area Impacts
  - Impaired Waters
  - CSXT ROW (County Parcel Data)
  - City/County Parcels
  - City/County Boundary
- (Virginia Department of Environmental Quality)

**Figure M-1**  
**Preferred Alternative –**  
**Potential Impacts to**  
**Wetlands and Streams**  
**Sheet 20 of 217**



\\dlsmain\GIS\_DATA\GIS\Projects\011545\_VA Dept of Rail-Public Transportation\0239056\_RAPS-4\AI\Dev-ConceptEng\map\_docs\mxd\FEIS\Map\_WFEIS\_M-1\_WetlandsStreams\_11x17.mxd | Last Updated: 12.06.2018

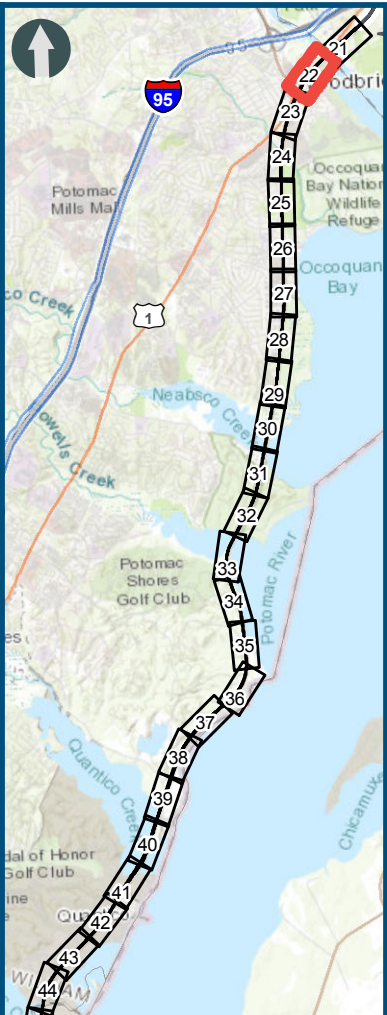


0 100 200  
Feet  
1 inch = 200 feet  
@ 11 x 17 inches  
Projection: Lambert Conformal Conic  
State Plane Virginia North FIPS 4501 Feet  
North American Datum of 1983  
Imagery/Basemap Source: 2015-2017 VGIN  
Aerial Imagery; ESRI World Transportation

- Legend**
- Permanent Limits of Disturbance
  - Temporary Limits of Disturbance
  - CSXT Mileposts
  - Track - Existing
  - Existing Stations
  - Culverts
  - Delineated Stream Impacts
  - Delineated Streams
  - Major River Impacts
  - Waterbodies
  - Delineated Wetlands
  - Delineated Wetland Impacts
  - Resource Protection Areas
  - Resource Protection Area Impacts
  - Impaired Waters (Virginia Department of Environmental Quality)
  - CSXT ROW (County Parcel Data)
  - City/County Parcels
  - City/County Boundary

**Figure M-1**  
**Preferred Alternative –**  
**Potential Impacts to**  
**Wetlands and Streams**  
**Sheet 21 of 217**





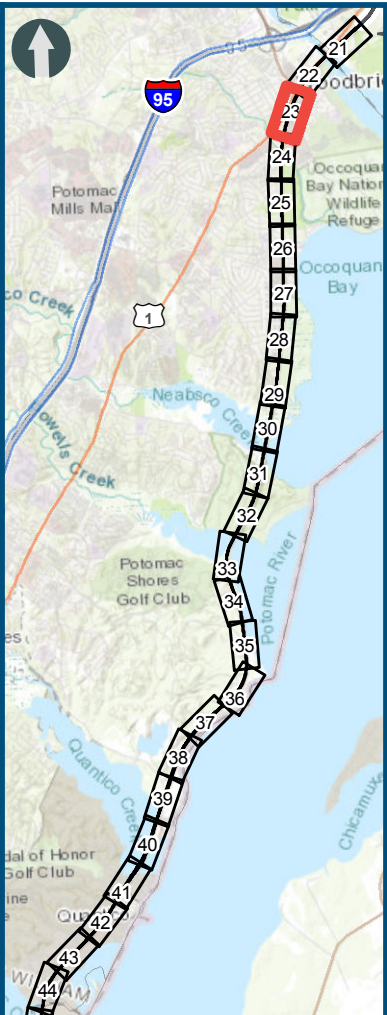
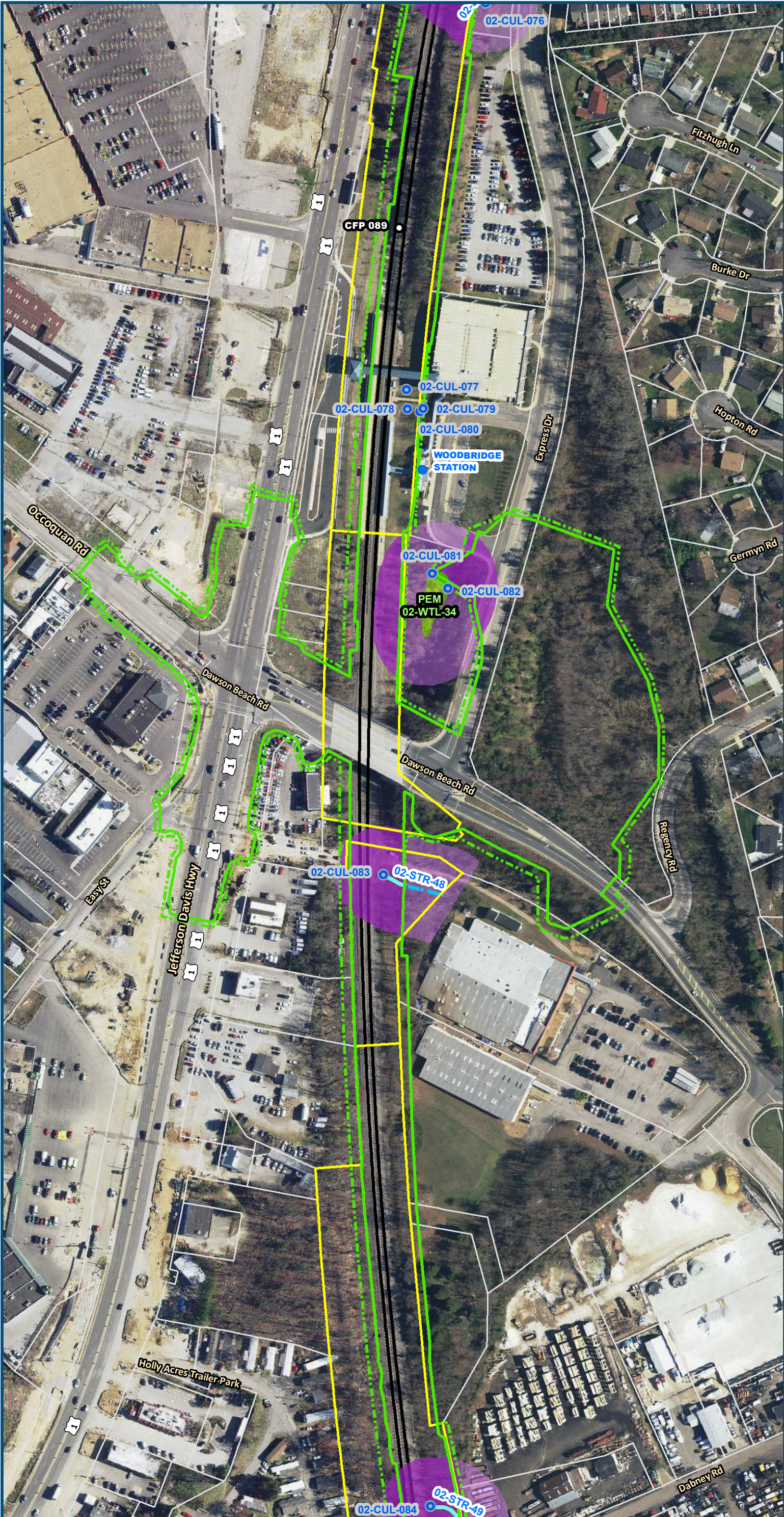
0 100 200  
Feet  
1 inch = 200 feet  
@ 11 x 17 inches  
Projection: Lambert Conformal Conic  
State Plane Virginia North FIPS 4501 Feet  
North American Datum of 1983  
Imagery/Basemap Source: 2015-2017 VGIN  
Aerial Imagery; ESRI World Transportation

#### Legend

- Permanent Limits of Disturbance
- Temporary Limits of Disturbance
- CSXT Mileposts
- Track - Existing
- Existing Stations
- Culverts
- Delineated Stream Impacts
- Delineated Streams
- Major River Impacts
- Waterbodies
- Delineated Wetlands
- Delineated Wetland Impacts
- Resource Protection Areas
- Resource Protection Area Impacts
- Impaired Waters (Virginia Department of Environmental Quality)
- CSXT ROW (County Parcel Data)
- City/County Parcels
- City/County Boundary

**Figure M-1**  
**Preferred Alternative –**  
**Potential Impacts to**  
**Wetlands and Streams**  
**Sheet 22 of 217**



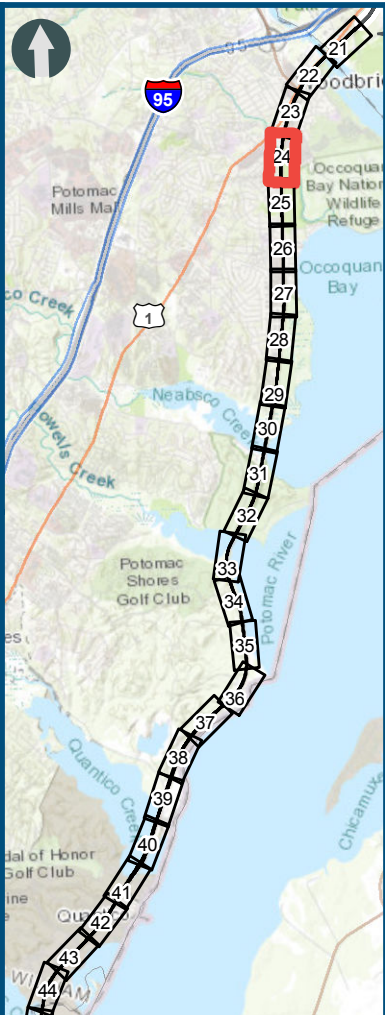
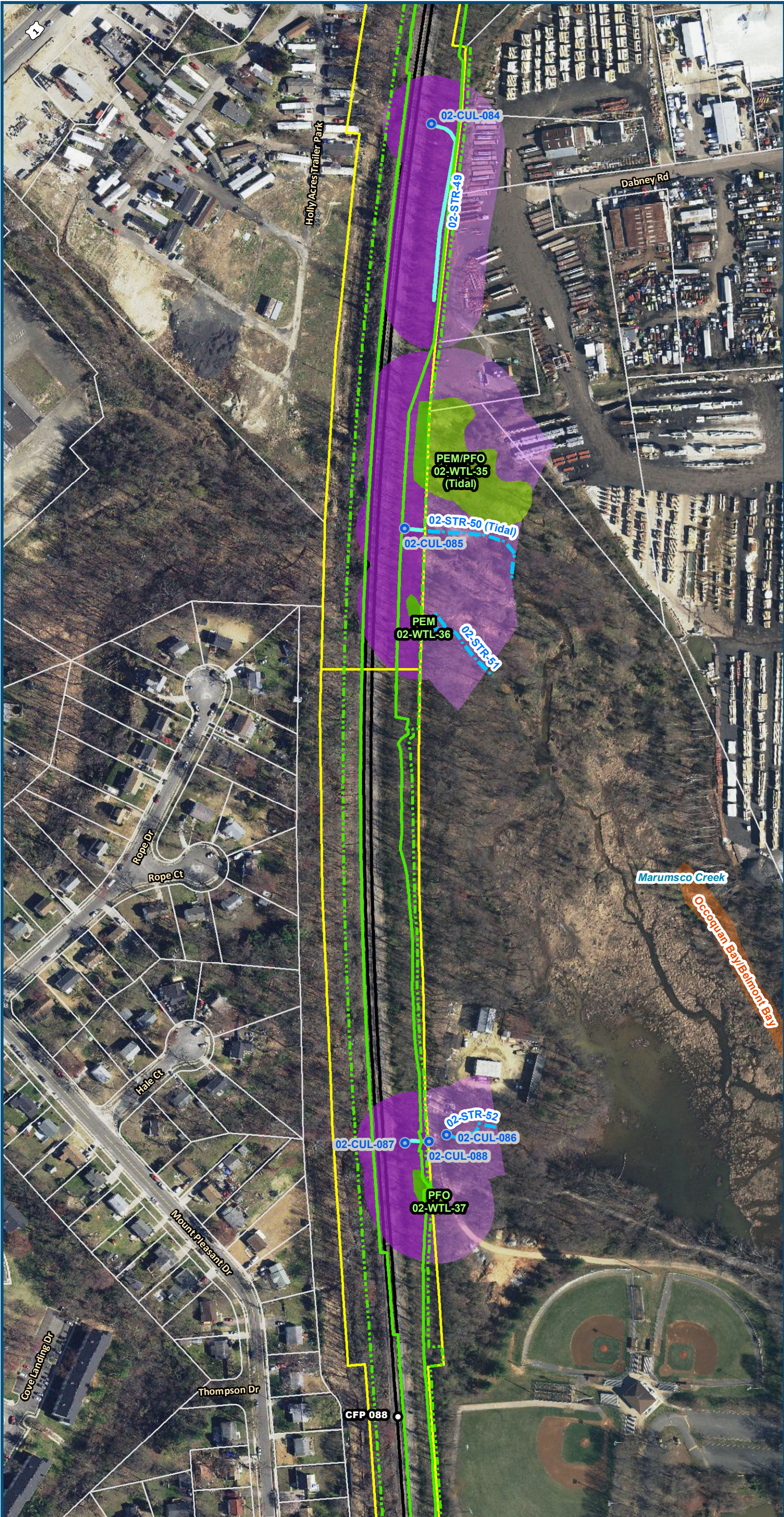


0 100 200  
Feet  
1 inch = 200 feet  
@ 11 x 17 inches  
Projection: Lambert Conformal Conic  
State Plane Virginia North FIPS 4501 Feet  
North American Datum of 1983  
Imagery/Basemap Source: 2015-2017 VGIN  
Aerial Imagery; ESRI World Transportation

- Legend**
- Permanent Limits of Disturbance
  - Temporary Limits of Disturbance
  - CSXT Mileposts
  - Track - Existing
  - Existing Stations
  - Culverts
  - Delineated Stream Impacts
  - Delineated Streams
  - Major River Impacts
  - Waterbodies
  - Delineated Wetlands
  - Delineated Wetland Impacts
  - Resource Protection Areas
  - Resource Protection Area Impacts
  - Impaired Waters
  - CSXT ROW (County Parcel Data)
  - City/County Parcels
  - City/County Boundary
- (Virginia Department of Environmental Quality)

**Figure M-1**  
**Preferred Alternative –**  
**Potential Impacts to**  
**Wetlands and Streams**  
**Sheet 23 of 217**





0 100 200  
Feet  
1 inch = 200 feet  
@ 11 x 17 inches  
Projection: Lambert Conformal Conic  
State Plane Virginia North FIPS 4501 Feet  
North American Datum of 1983  
Imagery/Basemap Source: 2015-2017 VGIN  
Aerial Imagery; ESRI World Transportation

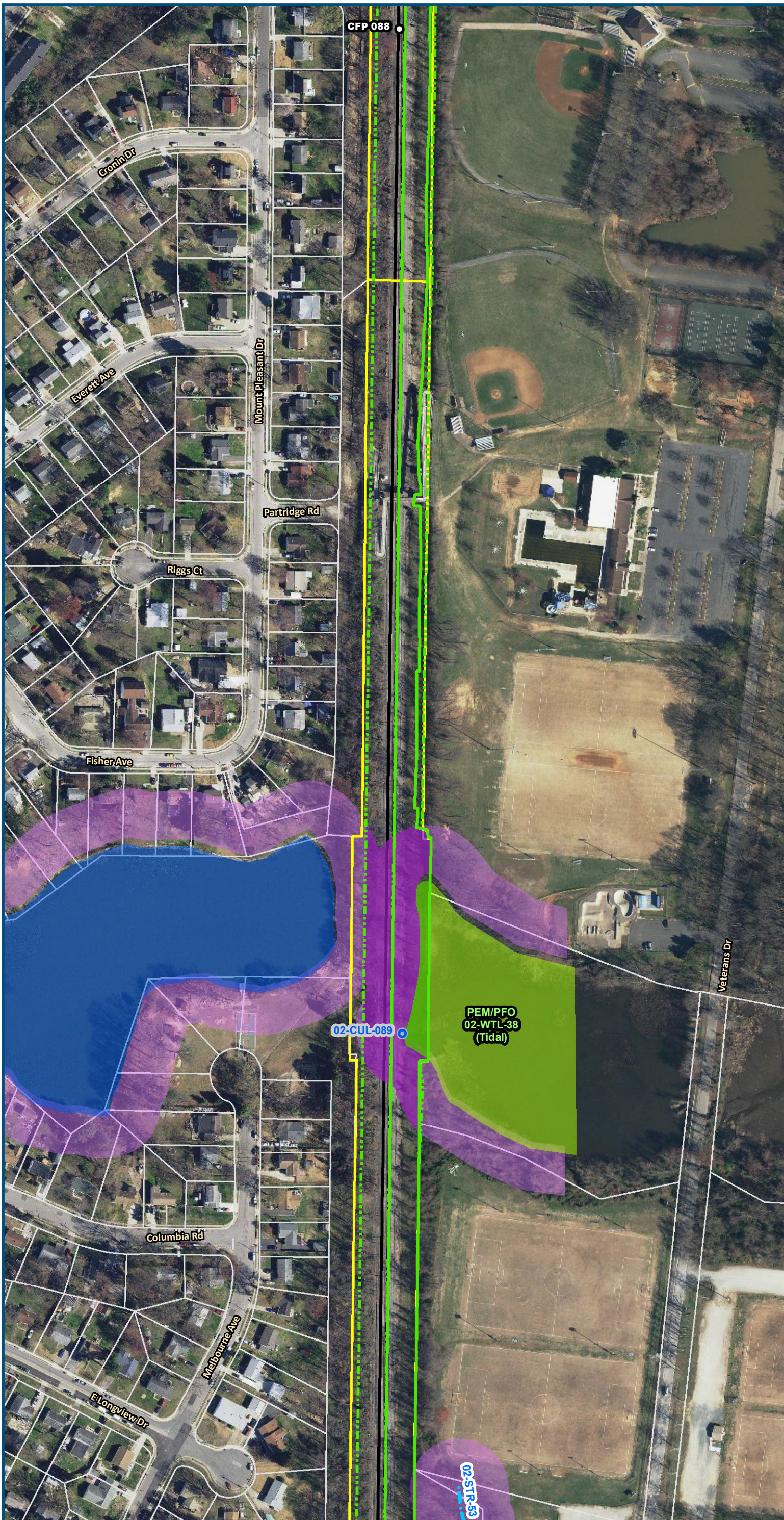
#### Legend

- Permanent Limits of Disturbance
- Temporary Limits of Disturbance
- CSXT Mileposts
- Track - Existing
- Existing Stations
- Culverts
- Delineated Stream Impacts
- Delineated Streams
- Major River Impacts
- Waterbodies
- Delineated Wetlands
- Delineated Wetland Impacts
- Resource Protection Areas
- Resource Protection Area Impacts
- Impaired Waters
- CSXT ROW (County Parcel Data)
- City/County Parcels
- City/County Boundary

**Figure M-1**  
**Preferred Alternative –**  
**Potential Impacts to**  
**Wetlands and Streams**  
**Sheet 24 of 217**



\\dlsmain\GIS\_DATA\GIS\Projects\011545\_VA Dept of Rail\Public\Transportation\0239056\_RAPS-4\AI\Dev-Concept\Eng\map\_docs\mxd\FEIS\Map\_M-1\_WetlandsStreams\_11x17.mxd | Last Updated: 12.06.2018



0 100 200  
Feet  
1 inch = 200 feet  
@ 11 x 17 inches  
Projection: Lambert Conformal Conic  
State Plane Virginia North FIPS 4501 Feet  
North American Datum of 1983  
Imagery/Basemap Source: 2015-2017 VGIN  
Aerial Imagery; ESRI World Transportation

#### Legend

- Permanent Limits of Disturbance
  - Temporary Limits of Disturbance
  - CSXT Mileposts
  - Track - Existing
  - Existing Stations
  - Culverts
  - Delineated Stream Impacts
  - Delineated Streams
  - Major River Impacts
  - Waterbodies
  - Delineated Wetlands
  - Delineated Wetland Impacts
  - Resource Protection Areas
  - Resource Protection Area Impacts
  - Impaired Waters
  - CSXT ROW (County Parcel Data)
  - City/County Parcels
  - City/County Boundary
- (Virginia Department of Environmental Quality)

**Figure M-1**  
**Preferred Alternative –**  
**Potential Impacts to**  
**Wetlands and Streams**  
**Sheet 25 of 217**