

Appendix 3.19-B
Planned and Potential
Transportation Projects

Table of Contents

Tables

Table 3.19-B-1	Fresno Transportation Projects – Fresno County
Table 3.19-B-2	Fresno Transportation Projects – City of Fresno
Table 3.19-B-3	Kings Transportation Projects – Kings County including City of Hanford
Table 3.19-B-4	Kings Transportation Projects – City of Corcoran
Table 3.19-B-5	Tulare Transportation Projects – Tulare County
Table 3.19-B-6	Kern Transportation Projects – Kern County
Table 3.19-B-7	Kern Transportation Projects – City of Wasco
Table 3.19-B-8	Kern Transportation Projects – City of Shafter
Table 3.19-B-9	Kern Transportation Projects – City of Bakersfield

Maps

Map 3.19-B-1	Fresno Transportation Projects – Fresno County
Map 3.19-B-2	Fresno Transportation Projects – City of Fresno
Map 3.19-B-3	Kings Transportation Projects – Kings County including City of Hanford
Map 3.19-B-4	Kings Transportation Projects – City of Corcoran
Map 3.19-B-5	Tulare Transportation Projects – Tulare County
Map 3.19-B-6	Kern Transportation Projects – Kern County
Map 3.19-B-7	Kern Transportation Projects – City of Wasco
Map 3.19-B-8	Kern Transportation Projects – City of Shafter
Map 3.19-B-9	Kern Transportation Projects – City of Bakersfield

This page intentionally left blank

Table B-1
Fresno County Projects (Map B-1)

Map ID	Agency	Project Name	Description	Project Limit	Cost	Funding Year	Funding Source	Project Type	Reference
1-1	Fresno County	Friant Road widening	Widen Friant Road to four lanes.	Cooper Avenue to Millerton	\$4.12 M	2008-2009	Measure C	W	Measure C
1-2	City of Fresno	Willow Avenue Widening	Widening from one lane to two lanes.	Shepherd and Nees	\$4 M	—	—	W	CIP
1-3	City of Clovis	Willow-Shepherd Street Improvements Project	Widen northbound Willow Avenue and eastbound Shepherd Avenue and construct miscellaneous street improvements.	Willow and Shepherd Avenues, Clovis	—	—	—	W, O	CEQAnet
1-4	City of Clovis	Temperance Avenue widening	Widen Temperance Avenue to a four-lane divided road.	Bullard to Shepherd Avenue	\$11,313,895	2010-2014	Measure C Federal Aid Local Development Fees	W	Measure C
1-5	City of Clovis	Shaw Avenue upgrades	Improve Shaw Avenue to a six-lane divided road.	Sunnyside to McCall	\$59,586,513	2011-2014	Measure C Local Development Fees	N	Measure C
1-6	Caltrans	SR-180 West	Create passing lanes in each direction on SR-180 West.	Yuba Avenue to James Avenue	\$18,856,491	2011-2014	Measure C	N	Measure C
1-7	Caltrans	SR-99	Construct interchange.	Grantland Avenue Diagonal	\$1 M	--	--	I/C	RTP
1-8	Caltrans	SR-99	Upgrade interchange.	Central Avenue and Chestnut Avenue	\$47,141,229	--	--	I/C	RTP
1-9	Caltrans	SR-99	Interchange improvements.	American Avenue	\$47,141,229	--	Measure C	I/C	RTP

Table B-1
Fresno County Projects (Map B-1)

Map ID	Agency	Project Name	Description	Project Limit	Cost	Funding Year	Funding Source	Project Type	Reference
1-10	Caltrans	Gregg Double Track - Fresno County*	The Fresno County portion of the construction of a 5-mile double track section in the Amtrak San Joaquin Corridor.	San Joaquin Corridor, Fresno County	\$22.5M	2007-2018	Federal/State funding programs, and local tax contributions	R	State Rail Plan
1-11	BNSF	BNSF Railway	Conejo Drill Track.	--	--	--	--	R	BNSF
1-12	Council of Fresno County Governments and California High-Speed Rail Authority	Fresno Freight Rail Alignment Project	Study the realignment of the Union Pacific and Burlingame Santa Fe railroad alignments through Fresno County.	Fresno County	--	--	--	O	Fresno COG
1-13	Caltrans	SR-99	Replace bridge structures.	SR-43/Floral Road	\$10 M	--	--	B	RTP
1-14	Caltrans	SR-180 East Segment	Construct a multi-lane freeway on SR-180.	Clovis to Temperance	\$63,169,246	2008-2010	State Taxes Measure C	N	Measure C
1-15	Caltrans	SR-180 East	Widen SR-180 east to a four-lane divided expressway.	Temperance to Academy Avenue	\$27,341,913	2009-2011	Measure C Federal Aid STIP	W	Measure C
1-16	Caltrans	SR-180 East	Widen SR-180 east to a two-lane expressway on four-lane right-of-way.	Academy Avenue to Trimmer Springs	\$73,540,317	2010-2013	Measure C	W	Measure C
1-17	Caltrans	SR-180 East	Widen SR-180 east to a two-lane expressway on a four-lane right-of-way.	Trimmer Springs to Frankwood Avenue	\$80,517,218	2008-2010	State Taxes Measure C	W	Measure C
1-18	Caltrans	SR-180	Widen SR-180 to four lanes.	Temperance to Cove	--	--	--	W	Measure C

Table B-1
Fresno County Projects (Map B-1)

Map ID	Agency	Project Name	Description	Project Limit	Cost	Funding Year	Funding Source	Project Type	Reference
1-19	Caltrans	Rural Route 180 Project	Remove the existing Wahtoke Creek Bridge and replace it with a new simple span and new abutments. Widening new bridge.	Wahtoke Creek Bridge and SR-180 (near Fresno at Wahtoke Creek, Caltrans Bridge #42-0078)	\$1.6 M	2008	--	W, B	CEQAnet
1-20	County of Fresno	Kings River Bridge on Goodfellow	Replace existing bridge with a cast-in-place concrete box girder. Widen approaches on either side of the bridge.	Goodfellow Avenue, 2.0 miles southeast of City of Sanger, Fresno County	--	--	--	W, B	CEQAnet
1-21	City of Kingsburg	Academy Avenue widening	Widen Academy Avenue.	Manning Avenue to Industrial Way	\$3.54 M	--	Measure C	W	Measure C
1-22	City of Reedley	Manning Avenue Bridge Replacement	Replace Manning Avenue Bridge over the Kings River. Install new curb, gutter, and meandering sidewalk along both sides avenue.	East end of the Kings River Bridge to the I Street intersection curb return	--	--	--	B, O	CEQAnet
1-23	City of Reedley	Dinuba Avenue/ Buttonwillow Avenue Roundabout	Reconstruct existing four-way stop controlled intersection with a roundabout. Place underground pipelines, pavement, curbs, sidewalks, lighting, and landscaping.	Dinuba Avenue and Buttonwillow Avenue	\$396,800	2006-2010	RSTP	I/C, O	CEQAnet
1-24	Caltrans	SR-99	Widen to six lanes.	Tulare County line to SR-201	\$41.2 M	--	--	W	RTP

Table B-1
Fresno County Projects (Map B-1)

Map ID	Agency	Project Name	Description	Project Limit	Cost	Funding Year	Funding Source	Project Type	Reference
1-25	Caltrans	SR-41	Widen to four lanes.	King County line to Elkhorn Avenue	\$11.1 M	2006-2010	STIP - Interregional	W	RTP
1-26	Caltrans	SR-269 Bridge Improvement	Build new bridge and channel on SR-269.	SR-198 and Huron	\$32,056,035	--	--	B	Measure C
1-27	Fresno County	I-5 Interchange Improvement	Interchange improvements at I-5 and I-198.		\$15,085,193	--	Measure C	I/C	Measure C

Notes:

* Projects at various locations along the Amtrak San Joaquin Route from Bakersfield to Oakland/Sacramento. For the purposes of these tables, the projects are listed in the Fresno County table (northernmost county). Projects not mapped include the San Joaquin Route Capitalized Maintenance (maintenance-of-way and structures, \$10M, 2007-2018) and Fresno Layover Facility (design and construction of layover facility, \$15M, 2007-2018) which are planned for the San Joaquin Corridor in Fresno County.

-- = Information not available

W = Widen

I/C = Intersection or Interchange

N = New Road

B = Bridge

R = Rail Infrastructure

O = Other

Sources:

BNSF BNSF Railway, 2010. Line Capacity Planning: San Joaquin Double Track projects, San Joaquin Valley Capacity Analysis (Presentation Slides). Fall.

CEQAnet CEQAnet, 2009. Official website, <http://www.ceqanet.ca.gov/QueryForm.asp>, accessed November 2009.

RTP Council of Fresno County Governments, 2007. Regional Transportation Plan, May 31, 2007.

Measure C Measure C - Regional Transportation Program Extension Projects. Access at: <http://www.measurec.com/extension.php>. February 22, 2010.

State Rail Plan California Department of Transportation, 2007. Draft California State Rail Plan (2007-08 to 2017-18). October.

Parsons Brinckerhoff, 2008. Draft San Joaquin Corridor Strategic Plan. Prepared for the California Department of Transportation.

Table B-2
City of Fresno Projects (Map B-2)

Map ID	Agency	Project Name	Description	Project Limit	Cost	Funding Year	Funding Source	Project Type	Reference
2-1	Caltrans	SR-41	Add southbound auxiliary lane.	El Paso Avenue to Friant Road	--	--	--	N	RTP
2-2	Fresno County	SR-41	Add northbound auxiliary lane.	Bullard Avenue to Herndon Avenue	\$5,100,000	--	--	N	RTP
2-3	City of Fresno	Herndon Avenue widening	Widen Herndon Avenue to a six-lane divided road.	SR-99 to De Wolf Avenue	\$56,569,474	2008-2009	Measure C Federal Aid TCRP Local Development Fees	W	Measure C
2-4	City of Fresno	Veterans Boulevard	Six-lane arterial roadway in northwest Fresno, linking to SR-99.	Herndon to Grantland	\$120 M	--	--	N	CIP
2-5	Caltrans	SR-99	Widen a 2.9-mile segment of SR-99 from Ashlan Avenue to Fresno/Madera County line by constructing two additional lanes in the median to convert the existing four-lane freeway to a six-lane freeway.	South of the Grantland Avenue under-crossing in Fresno County, to north of the Avenue 7 overcrossing in Madera County	\$25 M	--	--	W, N	RTP
2-6	Fresno Council of Governments	SR-99	Interchange improvements.	Shaw Avenue	\$32,000,000	--	--	I/C	RTP
2-7	City of Fresno	ITS Shaw Avenue	Installation of ITS infrastructure along six-lane arterial corridor.	SR-41 to SR-99	\$4.5 M	--	--	O	CIP

Table B-2
City of Fresno Projects (Map B-2)

Map ID	Agency	Project Name	Description	Project Limit	Cost	Funding Year	Funding Source	Project Type	Reference
2-8	Caltrans	SR-41	Add northbound auxiliary lane.	Ashlan Avenue to Shaw Avenue	\$16,800,000	2020	--	N	RTP
2-9	Caltrans	SR-41	Add Auxiliary lanes.	"O" Street to Shaw Avenue	--	--	--	N	RTP
2-10	City of Fresno	O Street Off-Ramp Widening	Reconfiguration of off-ramp.	O Street at SR-41	\$1.5 M	--	--	O	CIP
2-11	Caltrans	SR-41	Widen ramps to interchanges.	McKinley Avenue to Shields Avenue	\$9,500,000	2006-2010	SHOPP	W, I/C	RTP
2-12	Caltrans	SR-180	Braided ramp construction.	SR-41 to SR-168	\$56,569,474	2010-2012	Measure C RTMF	O	RTP
2-13	City of Fresno	Ventura Boulevard widening	Widen Ventura Boulevard to a four-lane divided road.	SR-41 to SR-99	\$9,428,246	2011-2012	Measure C Local Development Fees	W	Measure C
2-14	City of Fresno	SR-99 Monterey Bridge	Replace the Monterey Street Bridge.	SR-99 and Monterey Street	\$8,000,000	2008-2011	Measure C State Taxes	B	RTP
2-15	Caltrans	SR-180 West Segment	Construction of a freeway on SR-180 and a frontage road.	Brawley to Hughes West	\$50,000,000	2008	Measure C TCRP	N	Measure C
2-16	County of Fresno	California Avenue widening	Widen California Avenue to a four-lane divided road.	Ventura Avenue to West Avenue	\$2,200,000	2010-2011	Measure C Local Development Fees	W	Measure C
2-17	RTP	SR-99	Widen 2.9-mile segment of SR-99 by constructing two additional lanes in the median to convert the existing four-lane freeway to a six-lane freeway.	—	—	—	—	—	—

Table B-2
City of Fresno Projects (Map B-2)

Map ID	Agency	Project Name	Description	Project Limit	Cost	Funding Year	Funding Source	Project Type	Reference
2-18	Caltrans	SR-99	Upgrade interchange.	SR-99 to Cedar/North Avenue, Fresno County	\$47,141,229	--	This project will be programmed in the Mid- or Long-Term Program currently under review at COG.	I/C	RTP
2-19	City of Fresno	Widening of Peach Avenue	Widen Peach Avenue.	SR-180 to Jenson Avenue	\$47,141,229	2008-2013	Measure C TCRP	W	CEQAnet
2-20	City of Fresno	Peach Avenue Widening	Widening from two lanes to four lanes.	Belmont to Butler	\$15.1 M	--	--	W	CIP
2-21	City of Fresno	ITS Clovis Avenue	Installation of ITS infrastructure along corridor.	American to Dakota	\$3.4 M	--	--	O	CIP

Notes:

-- = Information not available.
W = Widen
I/C = Intersection or Interchange
N = New Road
B = Bridge
R = Rail Infrastructure
O = Other

Sources:

CEQAnet CEQAnet, 2009. Official website, <http://www.ceqanet.ca.gov/QueryForm.asp>, accessed November 2009.
CIP City of Fresno, 2010. Adopted Budget - 5 Year Capital Improvement Plan (FY 2011-2015). <http://www.fresno.gov/NR/rdonlyres/1C21D332-4EB6-458C-A2E3-D0F3C09ADD8F/20302/FY2011AdoptedBudget1.pdf>, accessed December 2010.
Fresno COG Council of Fresno County Governments and California High Speed Rail Authority, 2010. Draft Freight Rail Realignment Study. January.
Measure C Fresno County, 2010. Measure C - Regional Transportation Program Extension Projects. Access at: <http://www.measurec.com/extension.php>. February 22.
RTP Council of Fresno County Governments, 2007. Regional Transportation Plan, May 31, 2007.

Table B-3
Kings County including City of Hanford Projects (Map B-3)

Map ID	Agency	Project Name	Description	Project Limit	Cost	Funding Year	Funding Source	Project Type	Reference
3-1	Caltrans	Hanford to Shirley	Extend Double-track	Kings County	\$10 M	2007-2018	Federal/State funding programs, and local tax contributions	R	State Rail Plan
3-2	City of Hanford	Reclaimite on Various Streets	Reclaimite street surfaces	Third Street (10th Avenue to 11th Avenue), Fourth Street (10th Avenue to 11th Avenue), 10th Avenue (Fargo Avenue to Highway 43), Grangeville Blvd (Douty Street to 9-1/4 Avenue), Irwin Street (Grangeville Blvd to Lacey Blvd)	\$165,000	2009-2012	GTF	O	CIP
3-3	City of Hanford	Cape Seal Treatment on Various Streets	Resurface treatment of streets	Hanford-Armona Road (10th Avenue to 11th Avenue), Greenfield Avenue (Della Street to Lacey Blvd), Redington Street (Lacey Blvd to Grangeville Blvd), Fargo Avenue (10th Avenue to Fargo Place), Fargo Avenue (11th Avenue to BNSF Railroad), Florinda Street (10th Avenue to 9-1/4 Avenue).	\$600,000	2009-2012	GTF	O	CIP

Table B-3
Kings County including City of Hanford Projects (Map B-3)

Map ID	Agency	Project Name	Description	Project Limit	Cost	Funding Year	Funding Source	Project Type	Reference
3-4	City of Hanford	11th Avenue Resurfacing	Resurface/re-stripe street, including various street improvements (pavement milling, minor concrete repairs, new asphalt concrete paving, and traffic loop replacement)	Cortner Street to Fargo Avenue	\$360,000	2011-2012	ACO	O	CIP
3-5	City of Hanford	12th Avenue Widening/ Reconstruction/ Overlay	Widen/resurface 12th Avenue to facilitate two travel lanes in each direction plus turn lanes	Grangeville Blvd to Fargo Avenue	\$3.1 M	2009-2011	ACO, GTF, CMAQ, TIF, SBADF, Storm Drainage, Wastewater Capital, Water Capital	W, O	CIP
3-6	City of Hanford	Greenfield Avenue Extension Project	Construct a street to connect to the existing Greenfield Avenue in the County and improve the existing street from Pleasant Way west to 12th Avenue	Greenfield Avenue from Della Street to 12th Avenue	--	--	--	N, O	RTIP
3-7	City of Hanford	12th Avenue/ Highway 198 Interchange Expansion Reserve	Widen/reconstruction of interchange	12th Avenue and Highway 198	\$1.2 M	2009-2012	TIF	W, I/C	CIP

Table B-3
Kings County including City of Hanford Projects (Map B-3)

Map ID	Agency	Project Name	Description	Project Limit	Cost	Funding Year	Funding Source	Project Type	Reference
3-8	City of Hanford	11th Avenue Resurfacing	Resurface/re-stripe street, including various street improvements (pavement milling, minor concrete repairs, new asphalt concrete paving, and traffic loop replacement)	Lacey Blvd to Ivy Street	\$360,000	2011-2012	GTF	O	CIP
3-9	City of Hanford	11th Avenue Resurfacing	Resurface/re-stripe street, including various street improvements (pavement milling, minor concrete repairs, new asphalt concrete paving, and traffic loop replacement)	Third Street to Lacey Blvd	\$642,000	2009-2010	ACO, GTF, ARRA	O	CIP
3-10	City of Hanford	Railroad Crossing Improvements on Various Streets	Construct median island and minor pavement widening improvements; construct ADA and other pedestrian crossing improvements	Houston Avenue and BNSF rail crossing; Hanford-Armona Road and 11th Avenue	\$50,000	2009-2010	ACS	W, O	CIP
3-11	Caltrans	Guernsey to Hanford	Double-track project	Kings County	\$36 M	2007-2018	Federal/State funding programs, and local tax contributions	R	State Rail Plan
3-12	Caltrans	Kings Park Project	Connect 4.5-mile existing section of tracks with another existing section of tracks, resulting in a 9.5-mile continuous double track	South of Hanford on Amtrak San Joaquin Rail Corridor (North of Houston Ave to Kansas Ave)	\$18.5 M	2002-2012	\$5M FRA grant, \$13.5M local match	R	State Rail Plan

Table B-3
Kings County including City of Hanford Projects (Map B-3)

Map ID	Agency	Project Name	Description	Project Limit	Cost	Funding Year	Funding Source	Project Type	Reference
3-13	Caltrans	SR-198	Widen to four lanes	SR-43 to SR-99	\$122,500,000	2009	State, Kings County Association of Government, Tulare County Association of Governments	W	RTIP

Notes:

* Cost reflects the city's portion of funding allocated to the overall project cost.

ACO: Accumulated Capital Outlay
ARRA: American Recovery and Reinvestment Act - Stimulus Funds/Grants
CMAQ: Congestion Mitigation and Air Quality Funds
GTF: Gas Tax Fund
SBADF: Sewer Benefit Assessment District Fees
TIF: Transportation Impact Fees

-- = Information not available
W = Widen
I/C = Intersection or Interchange
N = New Road
B = Bridge
R = Rail Infrastructure
O = Other

Sources:

CIP City of Hanford, 2010. Two Year Budget – Fiscal Years 2010 and 2011. <http://www.ci.hanford.ca.us/civica/filebank/blobdload.asp?BlobID=4724>, accessed December 2010.
RTIP Kings County Association of Governments, 2008. 2008 Regional Transportation Improvement Program, January 23.
State Rail Plan California Department of Transportation, 2007. Draft California State Rail Plan (2007-08 to 2017-18). October.
Parsons Brinckerhoff, 2008. Draft San Joaquin Corridor Strategic Plan. Prepared for the California Department of Transportation.

Table B-4
City of Corcoran (Map B-4)

Map ID	Agency	Project Name	Description	Project Limit	Cost	Funding Year	Funding Source	Project Type	Reference
4-1	City of Corcoran	Intersection 6 ½ and Orange (51%)	Upgrade intersection	6-1/2 Avenue and Orange Avenue	\$1.2 M	2013-2014	--	I/C	CIP
4-2	City of Corcoran	Orange Avenue Realignment	Realign street	Orange Avenue at Otis Avenue	\$1 M	2011-2012	--	O	CIP
4-3	BNSF	BNSF Railway	Corcoran to Allensworth Double Tracking	Avenue 144 to north of Deer Creek	--	--	--	R	BNSF
4-4	BNSF	BNSF Railway	Corcoran to Allensworth Double Tracking	Brokaw Avenue to north of Deer Creek	--	--	--	R	BNSF
4-5	BNSF	BNSF Railway	Corcoran to Allensworth Double Tracking	Brokaw Avenue to Palmer Avenue	--	--	--	R	BNSF
<p>Notes:</p> <p>-- = Information not available W = Widen I/C = Intersection or Interchange N = New Road B = Bridge R = Rail Infrastructure O = Other</p> <p>Sources:</p> <p>BNSF BNSF Railway, 2010. Line Capacity Planning: San Joaquin Double Track projects, San Joaquin Valley Capacity Analysis (Presentation Slides). Fall. CIP City of Corcoran, 2010. Adopted Annual Budget FY 2010-2011 - 5 Year Capital Improvement Program (FY 2010-2015). http://www.cityofcorcoran.com/civica/filebank/blobdload.asp?BlobID=2872, accessed December 2010.</p>									

Table B-5
Tulare County Projects (Map B-5)

Map ID	Agency	Project Name	Description	Project Limit	Cost	Funding Year	Funding Source	Project Type	Reference
5-1	County of Tulare, City of Fresno, City of Dinuba, Caltrans, and the Federal Highway Administration	Mountain View Avenue/Avenue 416/El Monte Way Widening	Widen and improve a 12-mile stretch of Mountain View Avenue/Avenue 416/El Monte Way to four lanes with a median and/or median lane.	Avenue 416 from Bethel Avenue to Road 92 in Kingsburg	--	--	--	W	CEQAnet
5-2	Caltrans	Goshen to Kingsburg Six-Lane Project	Widen SR-99 from a four-lane freeway to a six-lane freeway. Construct additional lanes in the median and construct a frontage road. Replace both bridges at Kings River. At Northern Tributary of the Cross Creek, replace the northbound bridge and widen the southbound bridge. Widen both bridges at Cross Creek.	SR-99 between Kingsburg and Goshen	--	--	--	W, B, N	CEQAnet
5-3	County of Tulare, City of Dinuba, City of Visalia	Road 80	Widen to four lanes.	Road 80 between Visalia and Dinuba	\$101,048,000	2008-2009	State	W	Tulare County RMA
5-4	Tulare County	Betty Drive	Widen to four lanes and construct overpass.	Betty Drive between SR-99 and Road 80	\$8,000,000	2015 (Construction Year)	Regional Improvement Program. Measure R	W, N	Tulare County RMA

Table B-5
Tulare County Projects (Map B-5)

Map ID	Agency	Project Name	Description	Project Limit	Cost	Funding Year	Funding Source	Project Type	Reference
5-5	City of Visalia	McAuliff Street Construction South of Houston Avenue	Construct McAuliff Street between Mineral King Avenue and Houston Avenue.	Houston Avenue and Mineral King Avenue in Visalia	--	--	--	N	CEQAnet
5-6	Caltrans	SR-198	Interchange improvements.	Road 148 in Tulare County	\$25,000,000	2025 (Construction Year)	Regional Improvement Program, Measure R	I/C	RTP
5-7	City of Visalia	Packwood Creek Bridge	Construct a clear span bridge over the Packwood Creek channel to provide two-way vehicular travel and a sidewalk for bicycle and pedestrian use from the Sequoia Plaza shopping center on the north side of the creek to Cameron Avenue.	Cameron Avenue and South Mooney Boulevard, Visalia	--	--	--	N, O	CEQAnet
5-8	Tulare County	Avenue 280	Widen to four lanes and construct interchange.	Avenue 280 between SR-99 and Exeter in Tulare County	\$55,000,000	2015 (Construction Year)	Regional Improvement Program, Measure R	W, I/C	Tulare County RMA
5-9	Tulare County	Road 108	Widen to four lanes.	Road 108 between Visalia and Tulare	--	--	--	W	Tulare County RMA

Table B-5
Tulare County Projects (Map B-5)

Map ID	Agency	Project Name	Description	Project Limit	Cost	Funding Year	Funding Source	Project Type	Reference
5-10	Caltrans	Tulare Expressway Project	Realign SR-65 from Hermosa Avenue near the City of Lindsay, to SR-198 northeast of the City of Exeter. Build a two-lane expressway on a four-lane right-of-way approximately 9.2 miles in length.	SR-198 and County Road 204 in Tulare County	\$27,900,000	2010 (Construction Year)	Regional Improvement Program, Measure R	N	CEQAnet
5-11	Caltrans	SR-65	Widen to four lanes.	Spruce in Tulare County	--	--	--	W	RTP
5-12	Caltrans	SR-99	Roadway improvements.	Avenue 200 to Tipton in Tulare County	\$86,000,000	2026 (Construction Year)	IIP	O	RTP
5-13	Caltrans	SR-190	Adding passing lanes.	SR-99 through SR-65 in Tulare County	\$60,000,000	2030 (Construction Year)	Regional Improvement Program, Measure R	N	RTP
5-14	Tulare County	SR-65	Widen to four lanes.	Porterville	--	2013-2015	--	W	RTP
Notes: -- = Information not available W = Widen I/C = Intersection or Interchange N = New Road B = Bridge R = Rail Infrastructure O = Other Sources: CEQAnet CEQAnet, 2009. Official website, http://www.ceqanet.ca.gov/QueryForm.asp , accessed November, 2009. Tulare County RMA Schenke, Reed, 2009. Email communication. Engineer, Tulare County Resource Management Agency. November. RTP Tulare County Association of Governments, 2007. Regional Transportation Plan. May 21.									

Table B-6
Kern County Projects (Map B-6)

Map ID	Agency	Project Name	Description	Project Limit	Cost	Funding Year	Funding Source	Project Type	Reference
6-1	Caltrans	SR-46	Construction two new lanes and a median to widen SR-46 into a four-lane expressway. Install four new traffic signals and the upgrade of existing intersections to conform to current design standards.	San Luis Obispo County line to Holloway Road	\$183,000 (\$115,000 for Phases 1 & 2 and \$68,000 for Phase 3)	--	--	N, O	RTP
6-2	Caltrans	SR-46	Interchange upgrade.	Holloway Road to I-5	--	--	--	I/C	RTP
6-3	Caltrans	SR-99	Interchange update.	SR-99 and Woollomes Avenue	--	--	--	I/C	RTP
6-4	BNSF	BNSF Railway	Sandrini to Elmo Double Tracking.	Peterson Road to Blankenship Street	--	--	--	R	BNSF
6-5	BNSF	BNSF Railway	Wasco to Una Double Tracking.	6th Street to north of Kratzmeyer	--	--	--	R	BNSF
6-6	BNSF	BNSF Railway	Wasco to Una Double Tracking.	North of 7th Standard Road to north of Kratzmeyer	--	--	--	R	BNSF
6-7	Caltrans	SR-65	Widen to four lanes.	James Road to Merle Haggard Boulevard	\$100,000	--	--	W	RTP
6-8	Caltrans	SR-99	Interchange upgrade.	Olive Drive	\$50,000	2011-2015	--	I/C	RTP
6-9	Caltrans	SR-58	Widen to six lanes, grade separation to Landco.	Calloway Drive to SR-99	--	--	--	W, O	RTP

Table B-5
Tulare County Projects (Map B-5)

Map ID	Agency	Project Name	Description	Project Limit	Cost	Funding Year	Funding Source	Project Type	Reference
6-10	Caltrans	Shafter to Jastro – Kern County	Second Main Track between Jastro and Shafter.	--	\$40M	2007-2018	Federal/State funding programs, and local tax contributions	Kern	State Rail Plan
6-11	City of Bakersfield	Widening of Rosedale Highway	Widen facility from four lanes to a six lanes.	SR-43 to SR-99	\$23.5 M	2011-2013	TDF, TRIP	W	CIP
6-12	Caltrans	SR-58	Widen to four lanes.	SR-43 to Allen Road	--	--	--	W	RTP

Notes:

-- = Information not available
W = Widen
I/C = Intersection or Interchange
N = New Road
B = Bridge
R = Rail Infrastructure
O = Other

Sources:

BNSF BNSF Railway, 2010. Line Capacity Planning: San Joaquin Double Track projects, San Joaquin Valley Capacity Analysis (Presentation Slides). Fall.
RTP Kern Council of Governments, 2007. Regional Transportation Plan. May 17, 2007.
State Rail Plan California Department of Transportation, 2007. Draft California State Rail Plan (2007-08 to 2017-18). October.
Parsons Brinckerhoff, 2008. Draft San Joaquin Corridor Strategic Plan. Prepared for the California Department of Transportation.

Table B-7
City of Wasco Projects (Map B-7)

Map ID	Agency	Project Name	Description	Project Limit	Cost	Funding Year	Funding Source	Project Type	Reference
7-1	City of Wasco	Street reconstruction: Rose Street, Iris Street	Reconstruction of roadway surface on two streets	At Annin/Griffith and Clay/Marvin Avenue	\$348,863	2008	Prop 1B	O	Wasco Budget
7-2	City of Wasco	Sidewalk Improvements around Thomas Jefferson School	Sidewalk improvements in vicinity of junior high school	Bounded by Poplar Avenue, Highway 46, E Street, and 5th Street	\$405,800	2009	SR2S, TDA	O	Wasco Budget
7-3	City of Wasco	In-pavement lights Project at Filburn/Griffith and at 5th Street/ Broadway	Embedding lights in pavement at crosswalks adjacent to City schools	At Filburn/Griffith and at 5th Street/ Broadway	\$249,670	2010	SR2S	O	Wasco Budget
7-4	City of Wasco	Poplar Avenue Reconstruction	Reconstruction of pavement	7th Street to State Highway 46	\$769,004	2008-2009	RSTP, Prop 1B, TDA	O	Wasco Budget
7-5	City of Wasco	7th Street pedestrian improvement	Installing curb ramps on south side of 7th Street	Broadway to Palm Avenue	\$235,068	2008	HSIP Cycle Two, TDA	O	Wasco Budget
7-6	City of Wasco	Beckes Street Reconstruction	Reconstruction of pavement	7th Street to Sharon Court	\$129,317	2009	Gas Tax	O	Wasco Budget
7-7	City of Wasco	Poso Drive Reconstruction – Phase II	Reconstruction of pavement	Griffith Avenue to Palm Avenue	\$667,351	2009	Federal Stimulus Funding, Gas Tax	O	Wasco Budget

Table B-7
City of Wasco Projects (Map B-7)

Map ID	Agency	Project Name	Description	Project Limit	Cost	Funding Year	Funding Source	Project Type	Reference
7-8	City of Wasco	In-pavement lights on Poso	Embedding lights in pavement at crosswalks adjacent to City schools and Barker Park	Palm at 9th Place and Poso at Birch	\$244,700	2008-2009	HSIP, Traffic Impact Fees	O	Wasco Budget
7-9	City of Wasco	Poso Drive Reconstruction – Phase I	Reconstruction of pavement	Highway 43 to Griffith Avenue	\$516,595	2009	Federal Stimulus Funding	O	Wasco Budget

Notes:

-- = Information not available
W = Widen
I/C = Intersection or Interchange
N = New Road
B = Bridge
R = Rail Infrastructure
O = Other

Sources:

Wasco Budget City of Wasco, 2009. Adopted Budget for FY 2009-2010. June.
http://www.ci.wasco.ca.us/Public_Documents/WascoCA_Finance/Budget/Budget09-10.pdf, accessed December 2010.

Table B-8
City of Shafter Projects (Map B-8)

Map ID	Agency	Project Name	Description	Project Limit	Cost	Funding Year	Funding Source	Project Type	Reference
8-1	City of Shafter	Shafter Avenue	Reconstruct Shafter Avenue	5 Points to Central Valley Highway	\$185,818	2007-2008	--	O	CIP
8-2	City of Shafter	Mannel Avenue Reconstruction	Replace street and sidewalk	--	\$114,543	2007-2008	--	O	CIP
8-3	City of Shafter	Richland Drive	Street improvements	--	\$241,840	2008-2010	Community Development Block Grant	O	CIP
8-4	City of Shafter	Lerdo Highway	Reconstruct street	--	\$105	2008-2009	--	O	CIP
8-5	City of Shafter	Wall Street Paving	Paving and pedestrian improvements	--	\$32,000	2009-2010	--	O	CIP
8-6	City of Shafter	Lerdo Highway	Reconstruct facility	--	\$116,389	2007-2008	--	O	CIP
8-7	City of Shafter	Lerdo Highway	Reconstruct pavement	--	\$1 M	2009-2010	--	O	CIP
8-8	City of Shafter	Lerdo Highway Resurfacing	Resurface facility	--	\$429,369	2008-2009	Proposition 1B Funds	O	CIP
8-9	City of Shafter	Gecko Street Improvements	Street improvements	--	\$200,000	2010-2011	--	O	CIP
8-10	City of Shafter	7th Standard Road	Widen 7th Standard Road	--	\$27,550	2009-2010	General Funds	W	CIP
8-11	City of Shafter	7th Standard Road	Grade separation project	--	\$5 M	2009-2010	General Funds	O	CIP

Notes:

-- = Information not available
W = Widen
I/C = Intersection or Interchange
N = New Road
B = Bridge
R = Rail Infrastructure
O = Other

Sources: CIP City of Shafter, 2010. Annual Operating Budget 2010-2011 – Capital Improvement Program (2007-2016). June.
<http://www.shafter.com/DocumentView.aspx?DID=838>, accessed December 2010.

Table B-9
City of Bakersfield Projects (Map B-9)

Map ID	Agency	Project Name	Description	Project Limit	Cost	Funding Year	Funding Source	Project Type	Reference
9-1	City of Bakersfield	Street Improvement - East side of Calloway Drive at Norris Road	Resurface/reconstruction work	Lake Superior Drive to Norris Road	\$717,000	2010-2011	TDF	O	CIP
9-2	City of Bakersfield	Street Improvement - Coffee Road/Goesling Avenue	Resurface/reconstruction work	Coffee Road south of Goesling Avenue	\$724,000	2010-2012	TDF	O	CIP
9-3	City of Bakersfield	Westside Parkway - All Phases	Construct a new east-west facility	Truxtun Avenue to Heath Road	\$40 M	2010-2011	TDF, TRIP, COF	N	CIP
9-4	City of Bakersfield	Reconstruction of Truxtun Avenue and Stine Road	Rehabilitate pavement	Truxtun Avenue from Commercial Way to Oak Street; Stine Road from Pacheco Road to White Lane	\$2.3 M	2010-2011	FTF, GTF	O	CIP
9-5	City of Bakersfield	Oak Street Bridge Repair	Repair bridge and damaged concrete	Truxtun Avenue to California Avenue	\$702,000	2011-2012	GTF	B	CIP
9-6	City of Bakersfield	Oak Street and 24th Street Expansion	Expand intersection	Oak Street and 24th Street	\$15.7 M	2010-2013	TDF, TRIP	I/C	CIP
9-7	City of Bakersfield	24th Street Widening	Widen of 24th street (SR-178)	SR-99 to M Street	\$32.4 M	2010-2013	TDF, TRIP	W	CIP
9-8	City of Bakersfield	Street Improvement - California Avenue west of Chester Avenue	Resurface/reconstruction work	California Avenue at Chester Avenue	\$233,000	2010-2011	TDF	O	CIP
9-9	City of Bakersfield	Morning Drive/SR-178 interchange	Construct a new interchange and widen SR-178 to four lanes	SR-178 at Morning Drive	\$53.7 M	2010-2012	TDF, TRIP	I/C	CIP
9-10	Caltrans	SR-58	Widen to eight lanes.	SR-99 to Cottonwood Road	\$30,000	2026-2030	--	W	RTP

9-11	City of Bakersfield	Street Improvement - Buena Vista Road - Campus Park to White Lane	Resurface/reconstruction work	Campus Park Drive to White Lane	\$678,000	2010-2012	TDF	O	CIP
9-12	City of Bakersfield	Street Improvement - East side of Stine Road/Berkshire Road/Panama Lane	Resurface/reconstruction work	Berkshire Road and Panama Lane	\$220,000	2010-2011	TDF	O	CIP
9-13	City of Bakersfield	Street Improvement - Wible Road/Panama Lane	Resurface/reconstruction work	Berkshire Road to Panama Lane	\$716,000	2010-2011	TDF	O	CIP
9-14	Caltrans, City of Bakersfield	SR-99	New interchange on SR-99 at Hosking Avenue to replace the existing Hosking Avenue over-crossing	SR-99 and Hosking Avenue	\$40,000	2007-2010	--	I/C	RTP

Notes:

Table contains the current year transportation projects for FY 2010-2011 from the City of Bakersfield CIP

COF: Capital Outlay Fund

FTF: Federal Transportation Fund

GTF: Gas Tax Fund

TDF: Transportation Development Fund

TRIP: Thomas Roads Improvement Program

-- = Information not available

W = Widen

I/C = Intersection or Interchange

N = New Road

B = Bridge

R = Rail Infrastructure

O = Other

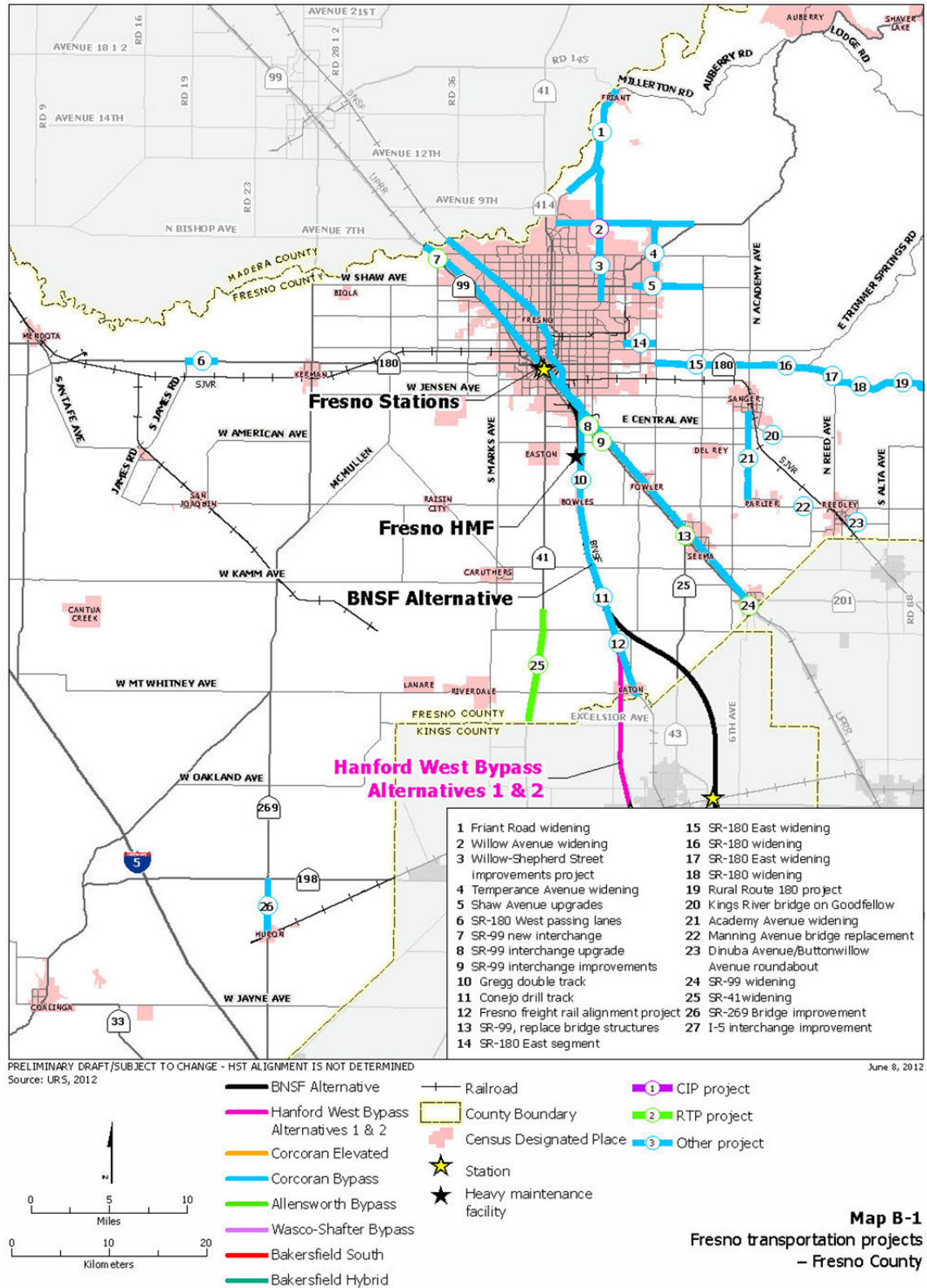
Sources:

CIP City of Bakersfield, 2010. Bakersfield Adopted Budget – 5 Year Capital Improvement Program (FY 2010-2015).

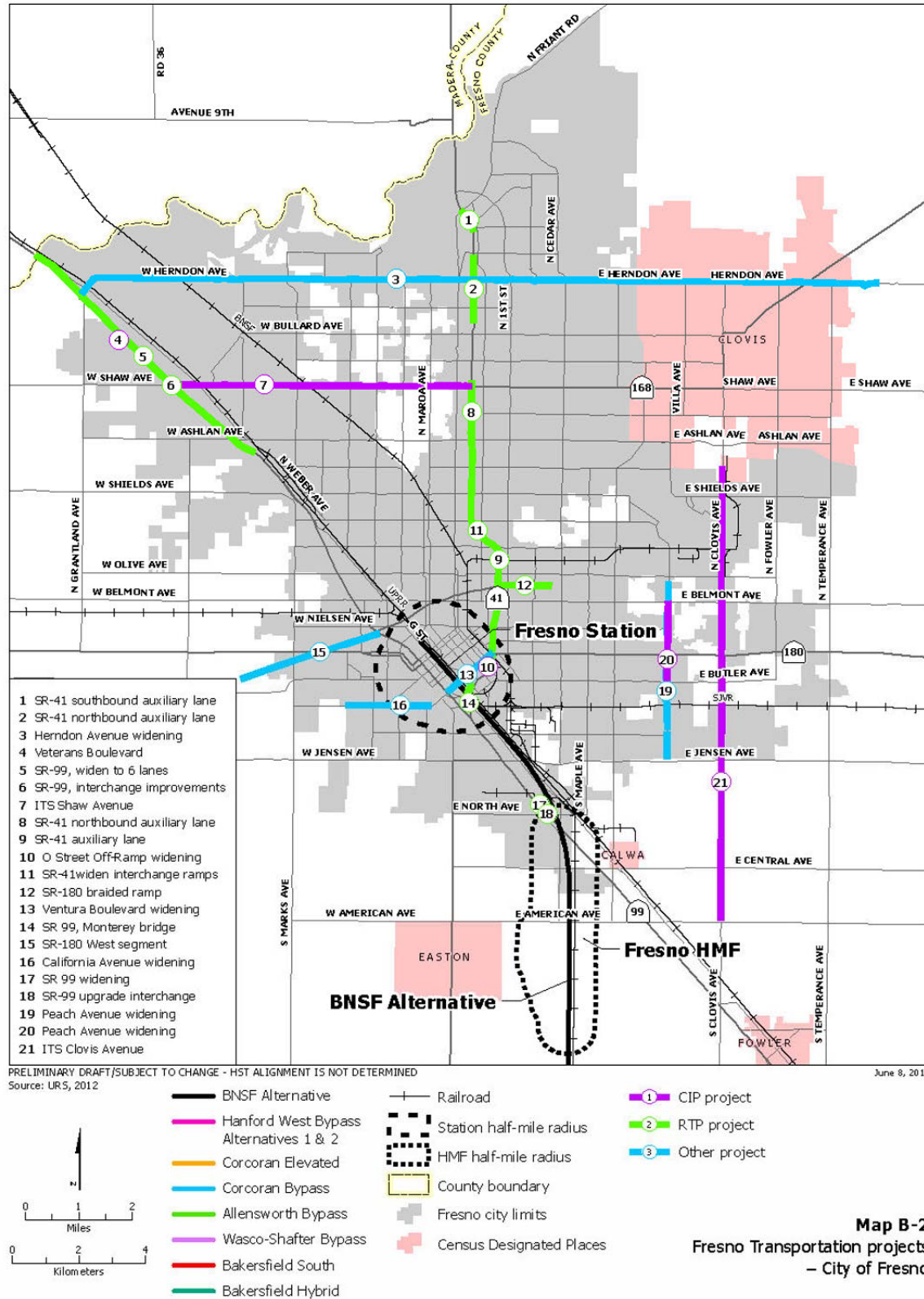
http://www.bakersfieldcity.us/administration/documents/FY_2010-11_Final_Budget.pdf, accessed December 2010.

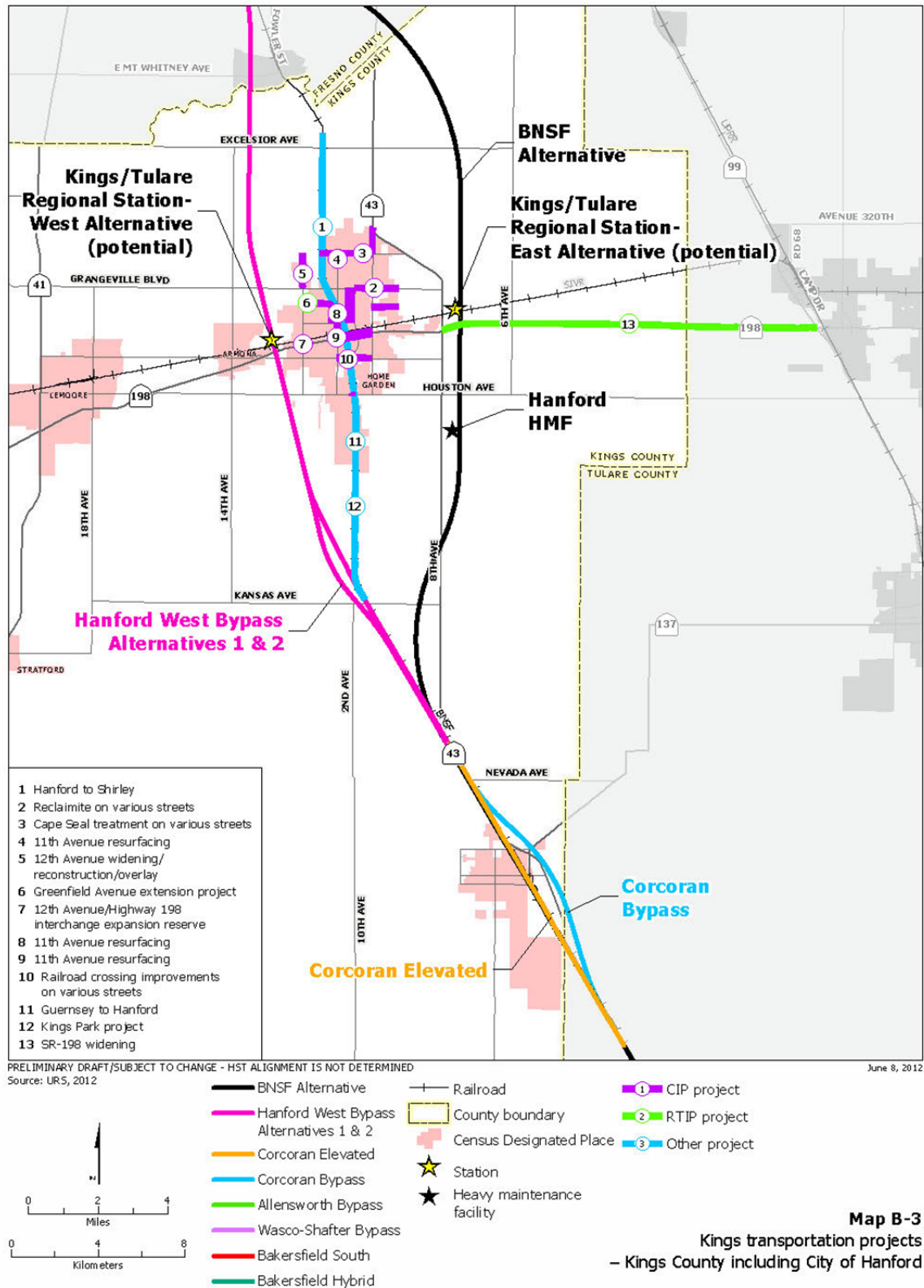
RTP Kern Council of Governments, 2007. 2007 Regional Transportation Plan, May 17, 2007.

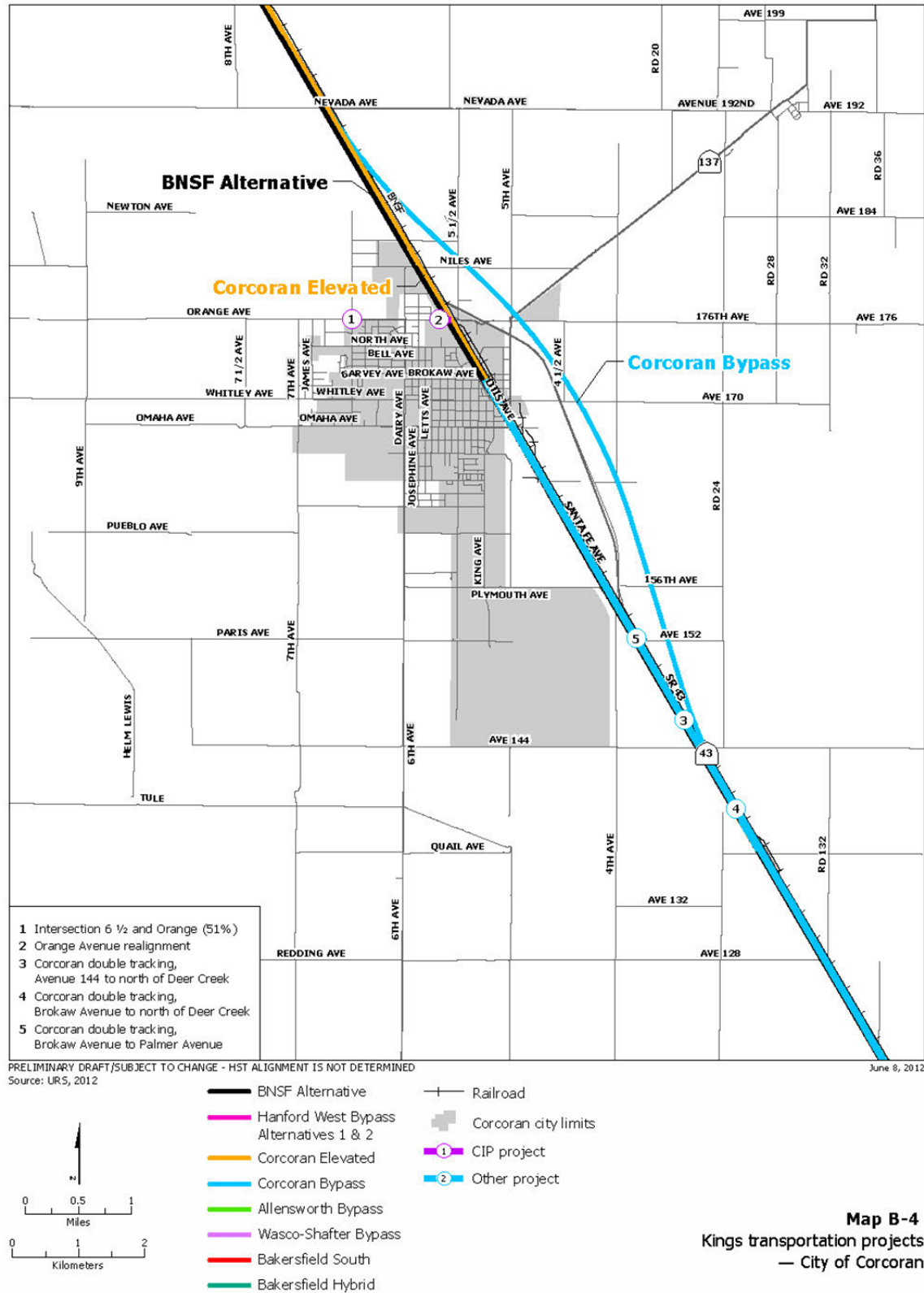
Maps

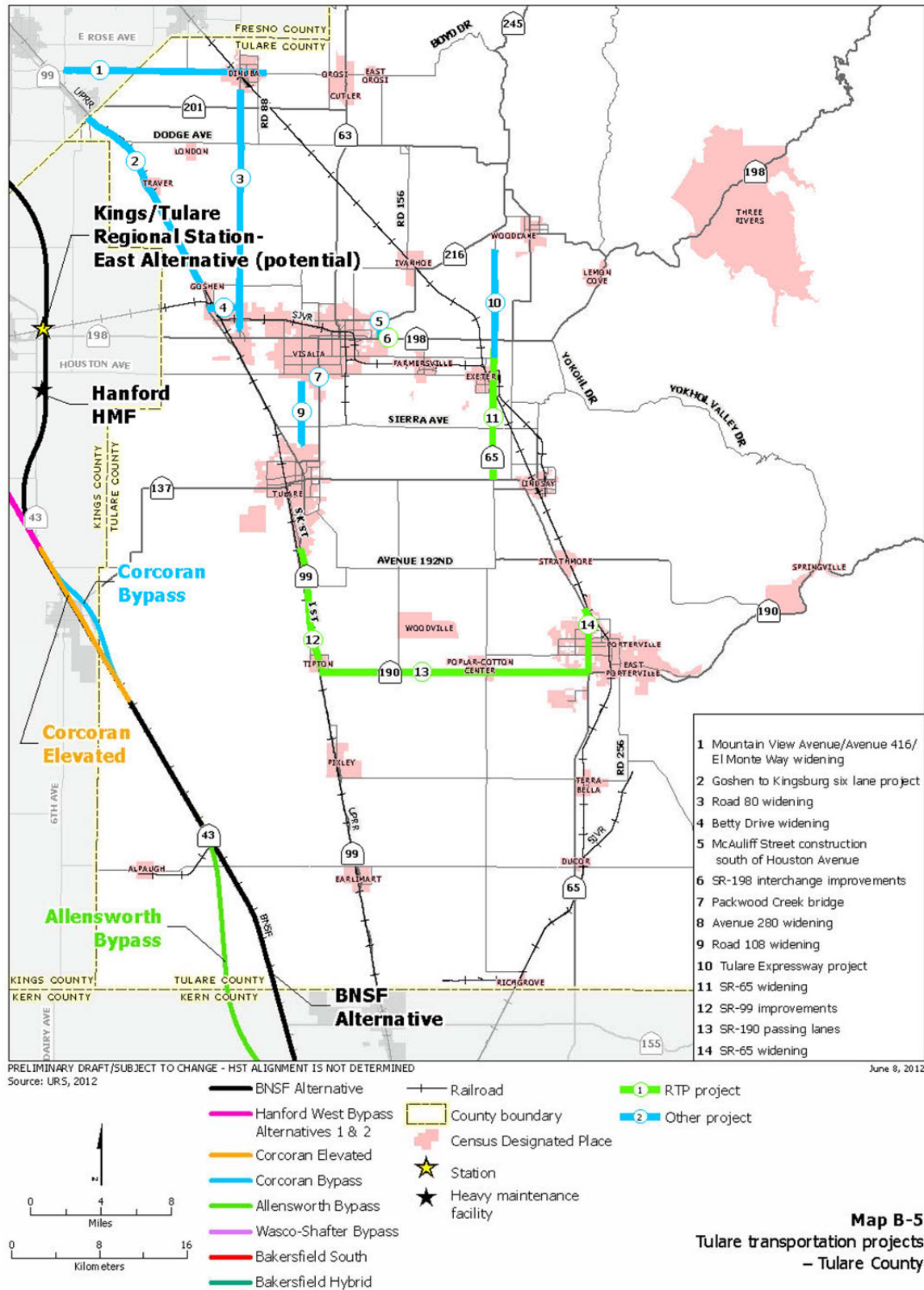


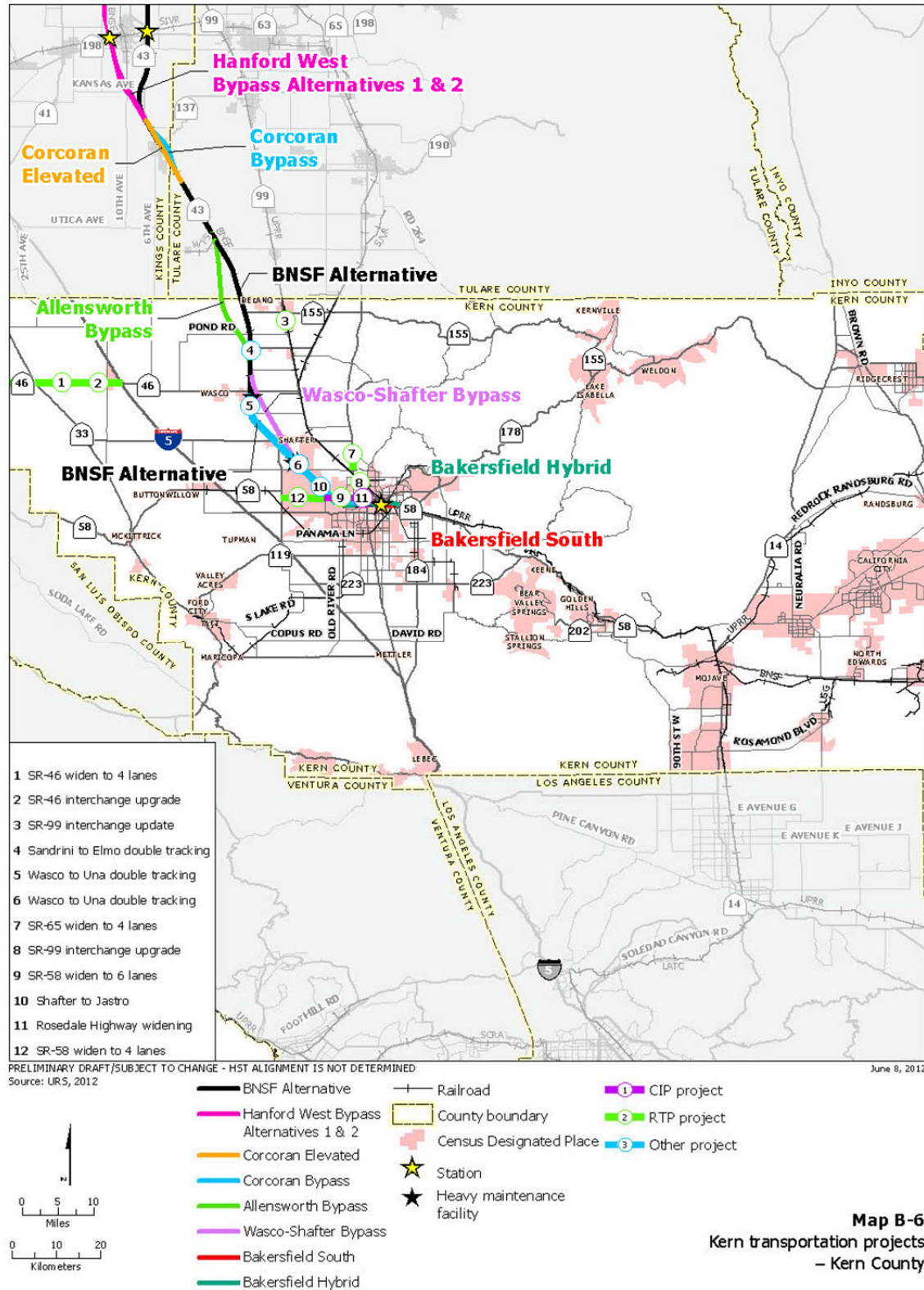
Map B-1
Fresno transportation projects
- Fresno County

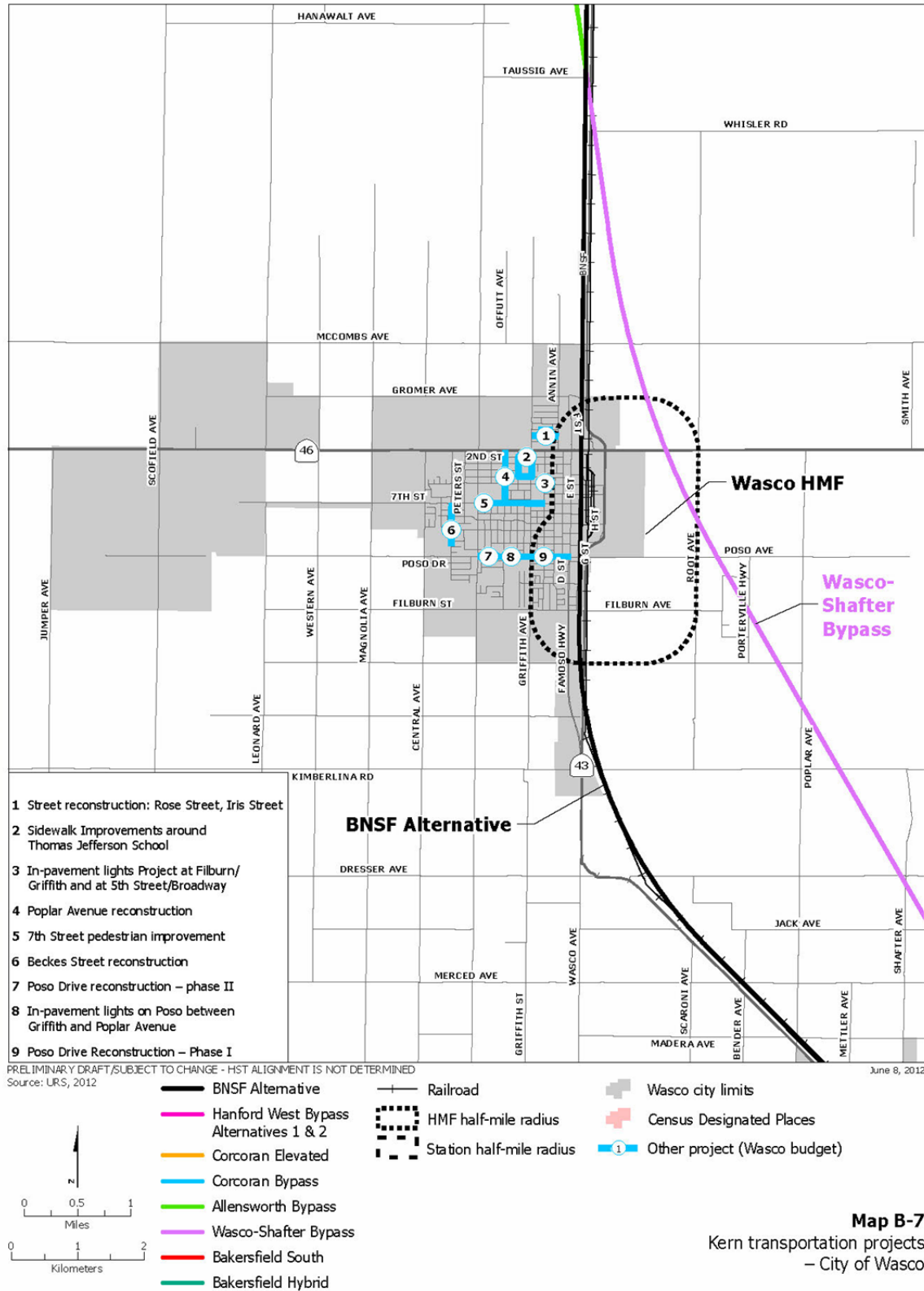


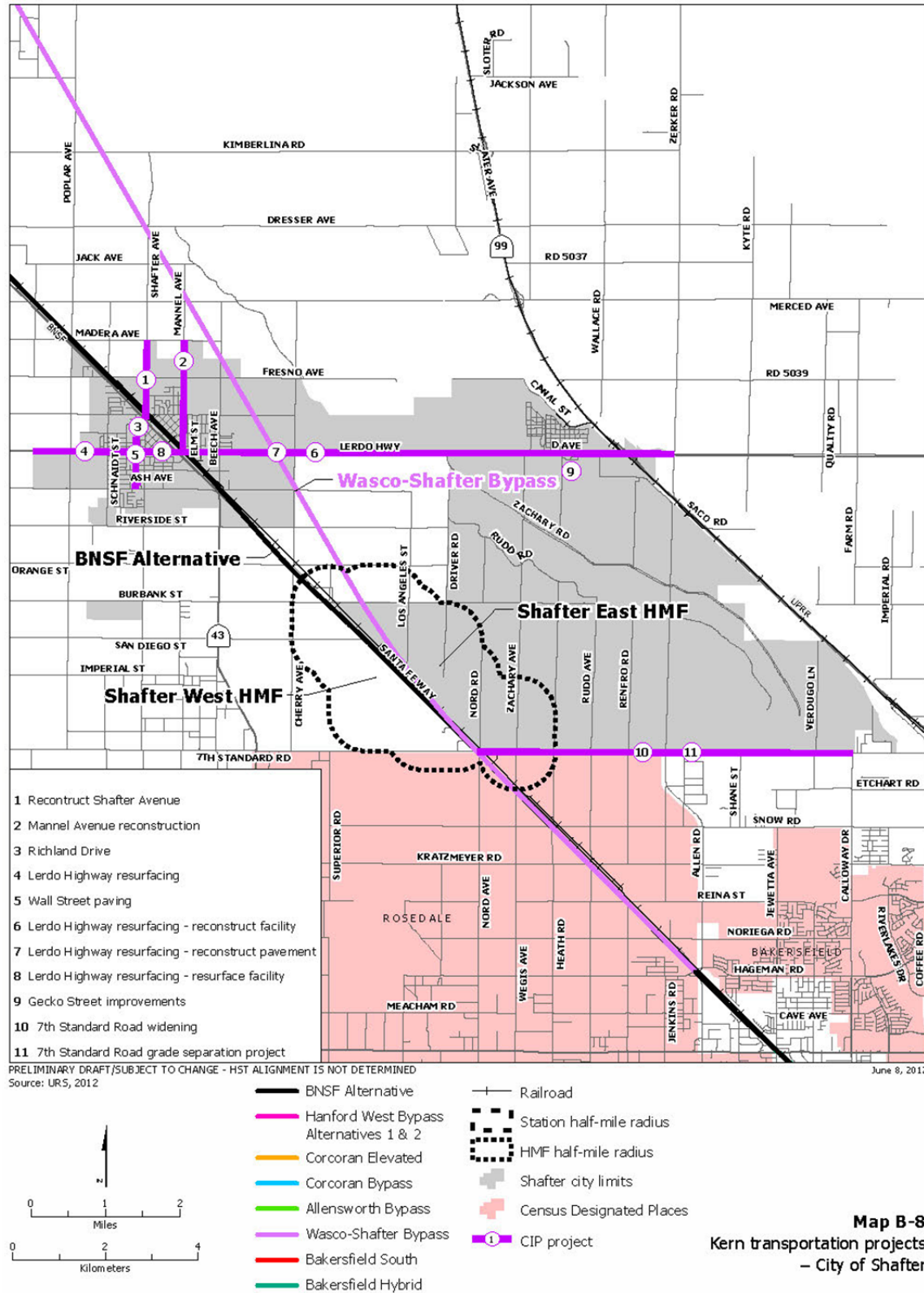


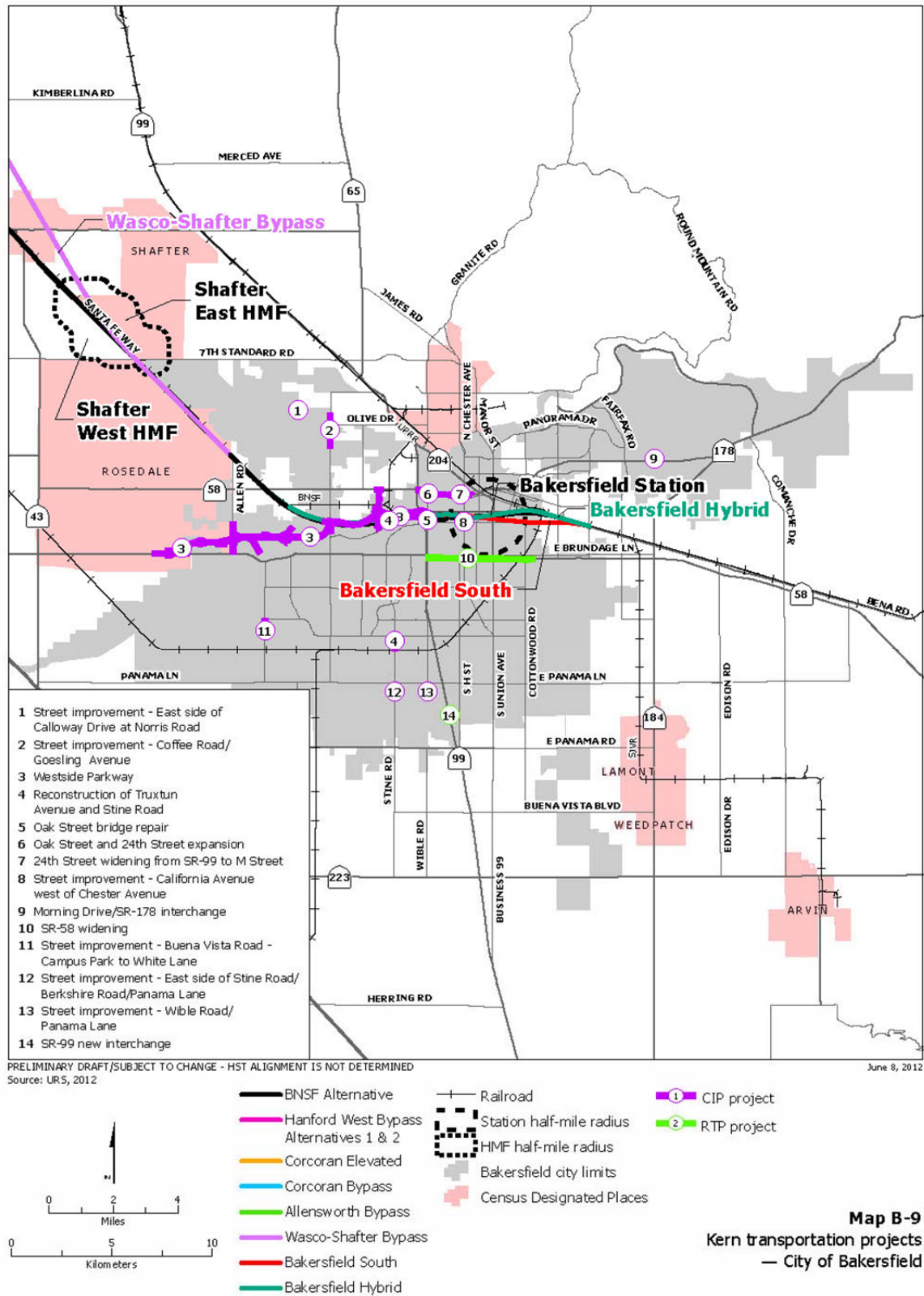












This page intentionally left blank