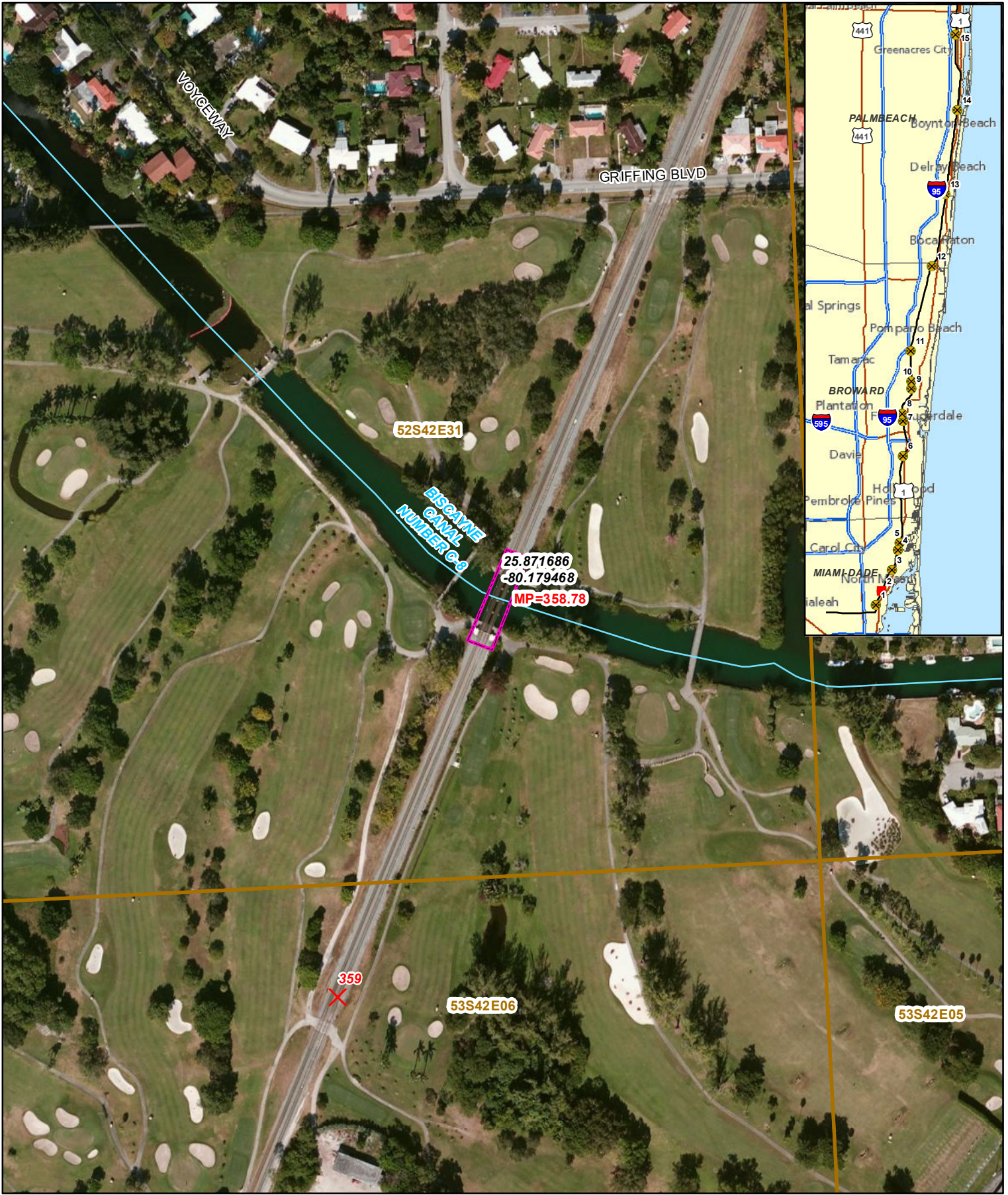


- ✕ Mile Posts
 - Rivers/Streams
 - Bridge Location
 - PLSS: Twn,Rng,Sec
- Data Sources: ESRI Imagery, NHD

Passenger Rail Corridor Evaluation			
All Aboard Florida Project - Miami to West Palm - Study Map 1 of 15			
Drawn	Date		LITTLE RIVER DADE COUNTY
ARB	09/10/2012		
Checked	Date	Figure 1	
ARB	09/10/2012		

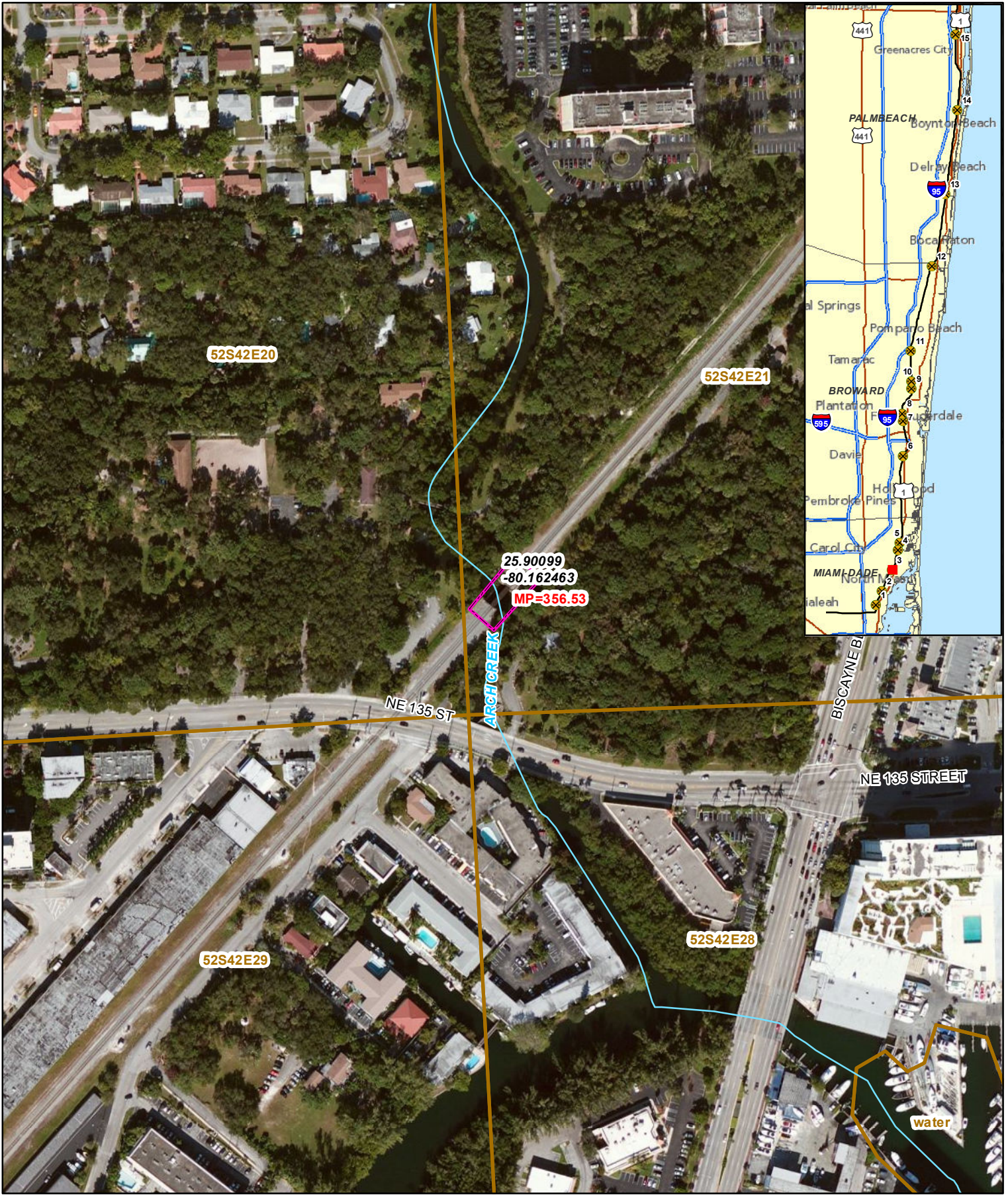
Path: V:\0-FCI_Ra\FGIS\FECl_GDB\WXD\Meetings\Lucien_Requests\Bridges_Aerial_8x11_Set_15_MIAtoWestPalm_FlagDev.mxd



- ✗ Mile Posts
 - Rivers/Streams
 - Bridge Location
 - PLSS: Twn,Rng,Sec
- Data Sources: ESRI Imagery, NHD

Passenger Rail Corridor Evaluation			
All Aboard Florida Project - Miami to West Palm - Study Map 2 of 15			
Drawn ARB	Date 09/10/2012		BISCAYNE PARK CANAL DADE COUNTY
Checked ARB	Date 09/10/2012		
<table border="1" style="width: 100%; border-collapse: collapse;"> <tr> <td style="width: 50%; padding: 5px;">Figure 2</td> </tr> </table>			
Figure 2			

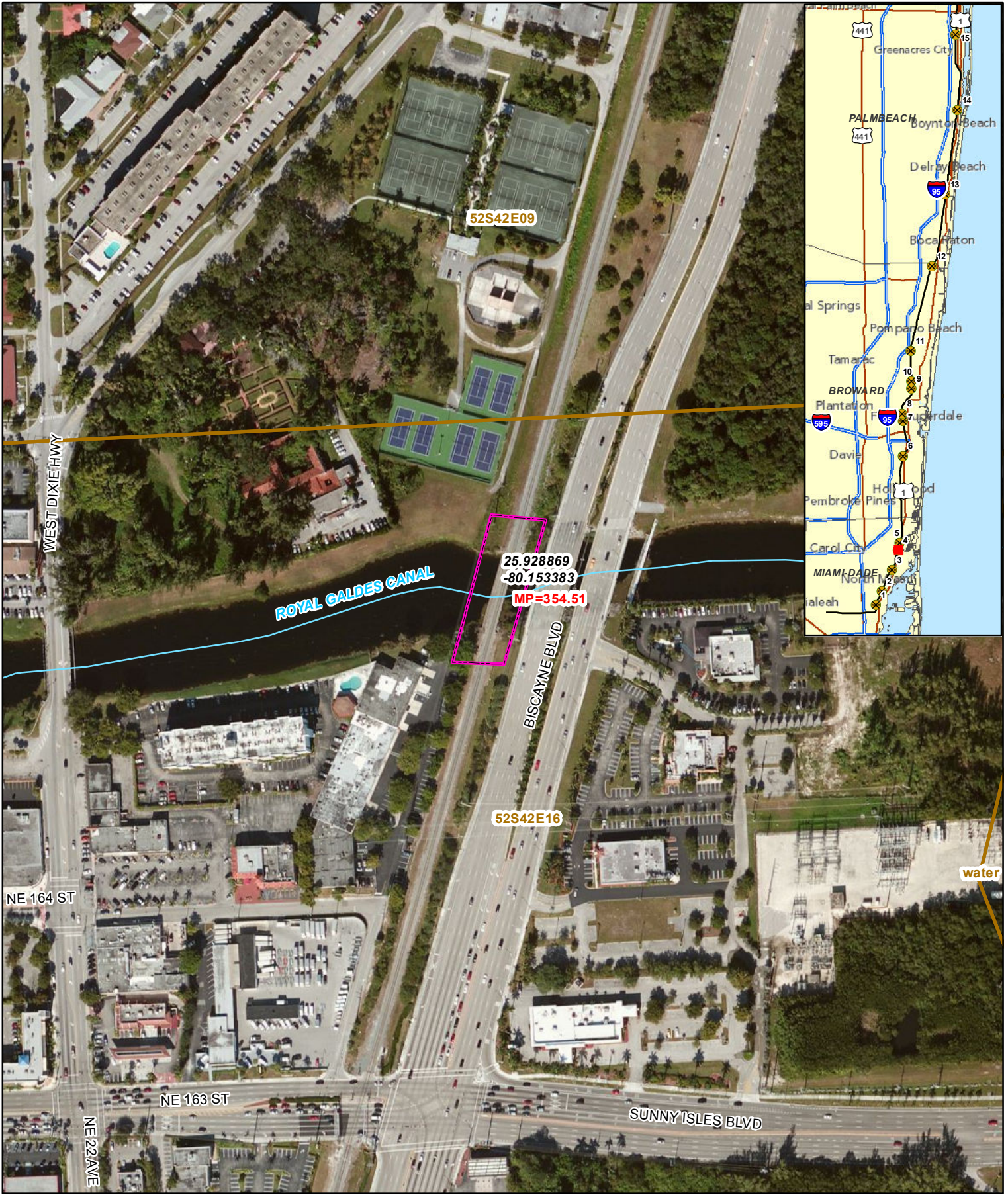
Path: V:\0-FCI_Ra\FGIS\FCI_GDB\WXD\Meetings\Lucien_Requests\Bridges_Aerial_8x11_Sel_15_MIAtoWestPalm_FlagDev.mxd



- ✕ Mile Posts
 - Rivers/Streams
 - Bridge Location
 - PLSS: Twn,Rng,Sec
- Data Sources: ESRI Imagery, NHD

Passenger Rail Corridor Evaluation			
All Aboard Florida Project - Miami to West Palm - Study Map 3 of 15			
Drawn	Date		ARCH CREEK DADE COUNTY
ARB	09/10/2012		
Checked	Date		
ARB	09/10/2012	Figure 3	

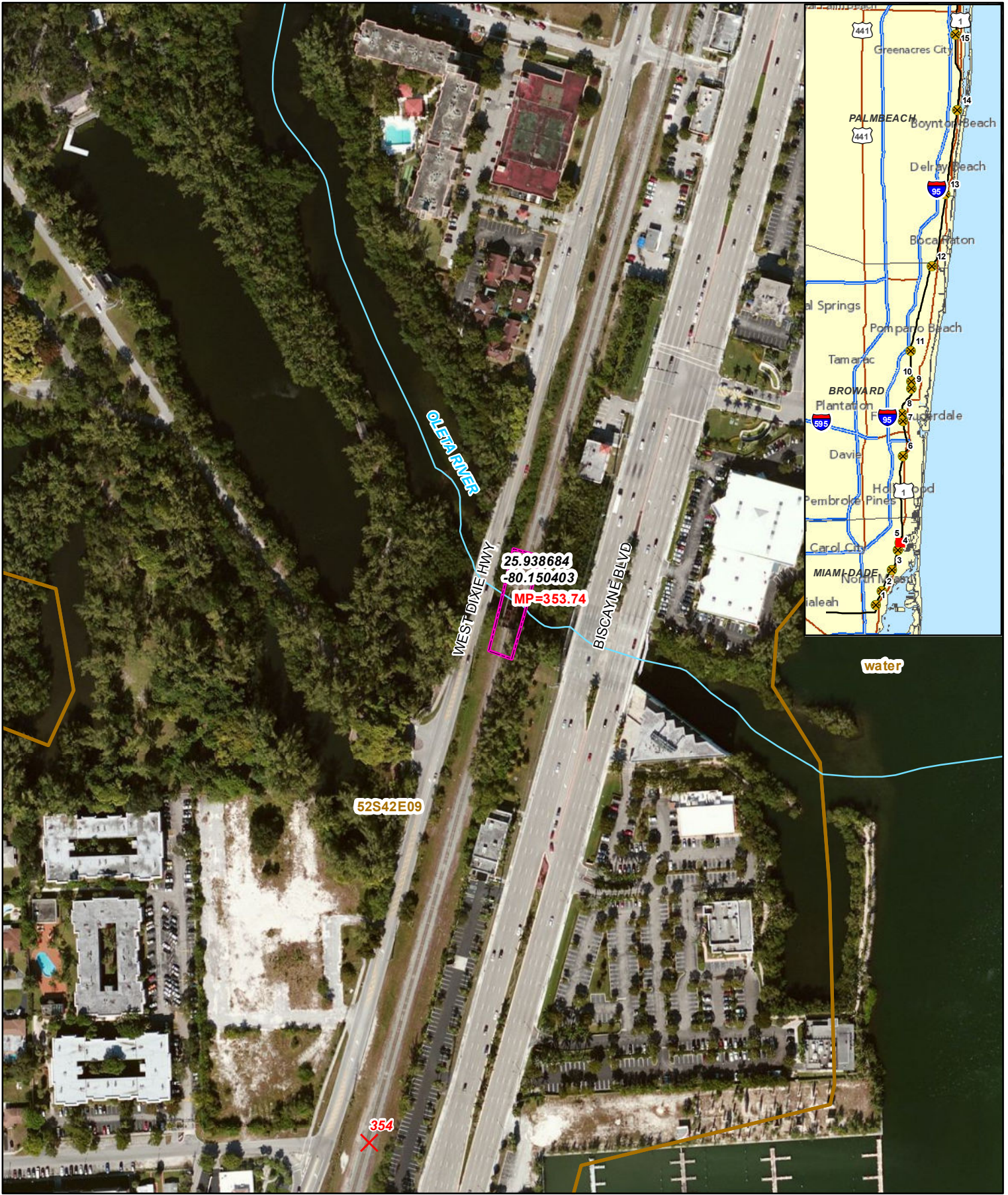
Path: V:\0-FECl_Ra\FGIS\FECl_GDB\WXD\Meetings\Lucien_Requests\Bridges_Aerial_8x11_Sel_15_MIAtoWestPalm_FlagDev.mxd



- ✕ Mile Posts
 - Rivers/Streams
 - Bridge Location
 - PLSS: Twn,Rng,Sec
- Data Sources: ESRI Imagery, NHD

Passenger Rail Corridor Evaluation			
All Aboard Florida Project - Miami to West Palm - Study Map 4 of 15			
Drawn ARB	Date 09/10/2012		ROYAL GLADES CANAL DADE COUNTY
Checked ARB	Date 09/10/2012		
<div style="display: flex; justify-content: space-between;"> Figure 4 </div>			

Path: V:\0-FECl_Ra\GIS\FECl_GDB\WXD\Meetings\Lucien_Requests\Bridges_Aerial_8x11_Set_15_MIAtoWestPalm_FlagDev.mxd



- ✕ Mile Posts
 - Rivers/Streams
 - Bridge Location
 - PLSS: Twn,Rng,Sec
- Data Sources: ESRI Imagery, NHD

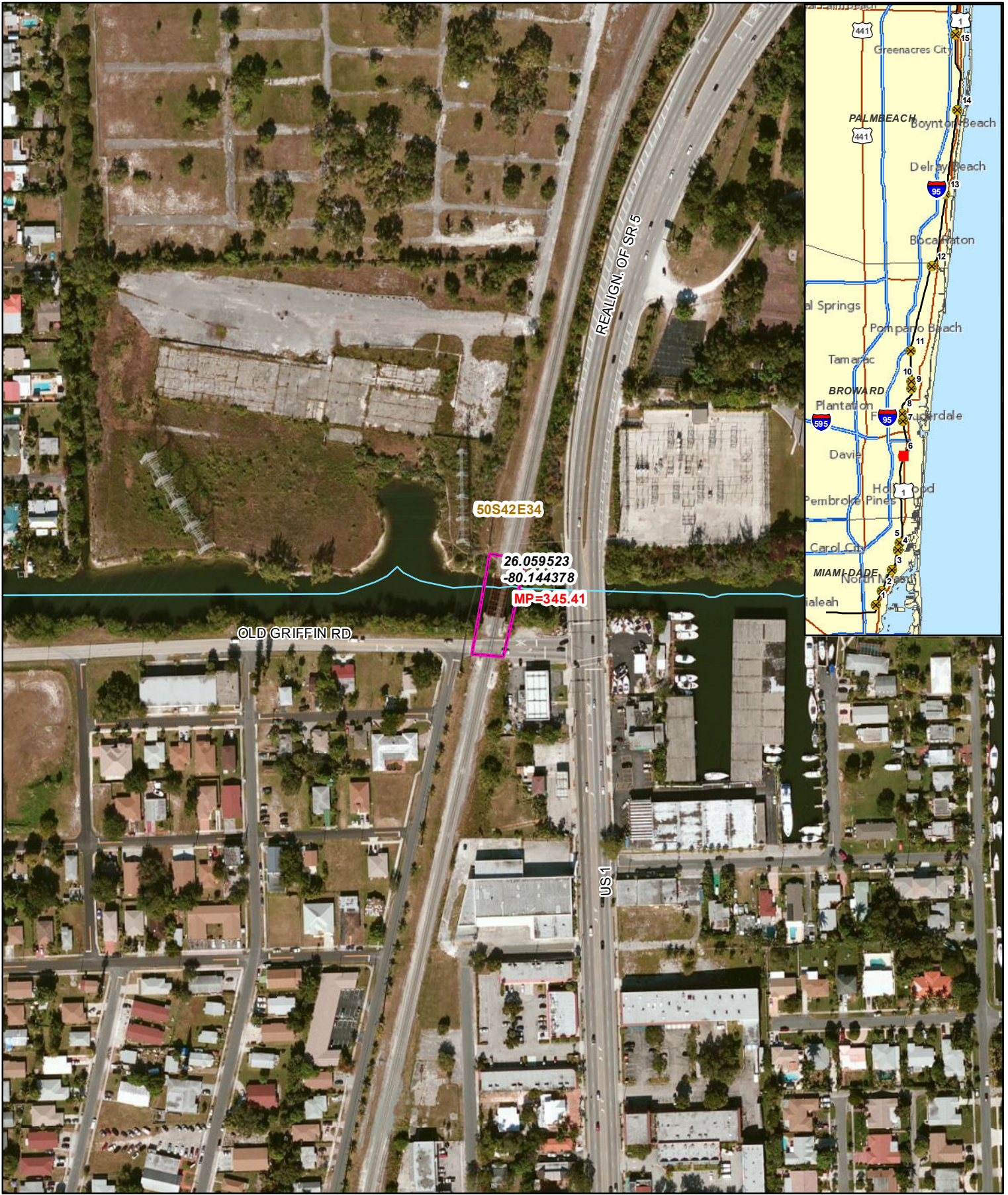
Passenger Rail Corridor Evaluation

All Aboard Florida Project - Miami to West Palm - Study Map 5 of 15

Drawn	Date		OLETA RIVER DADE COUNTY
ARB	09/10/2012		
Checked	Date		
ARB	09/10/2012		

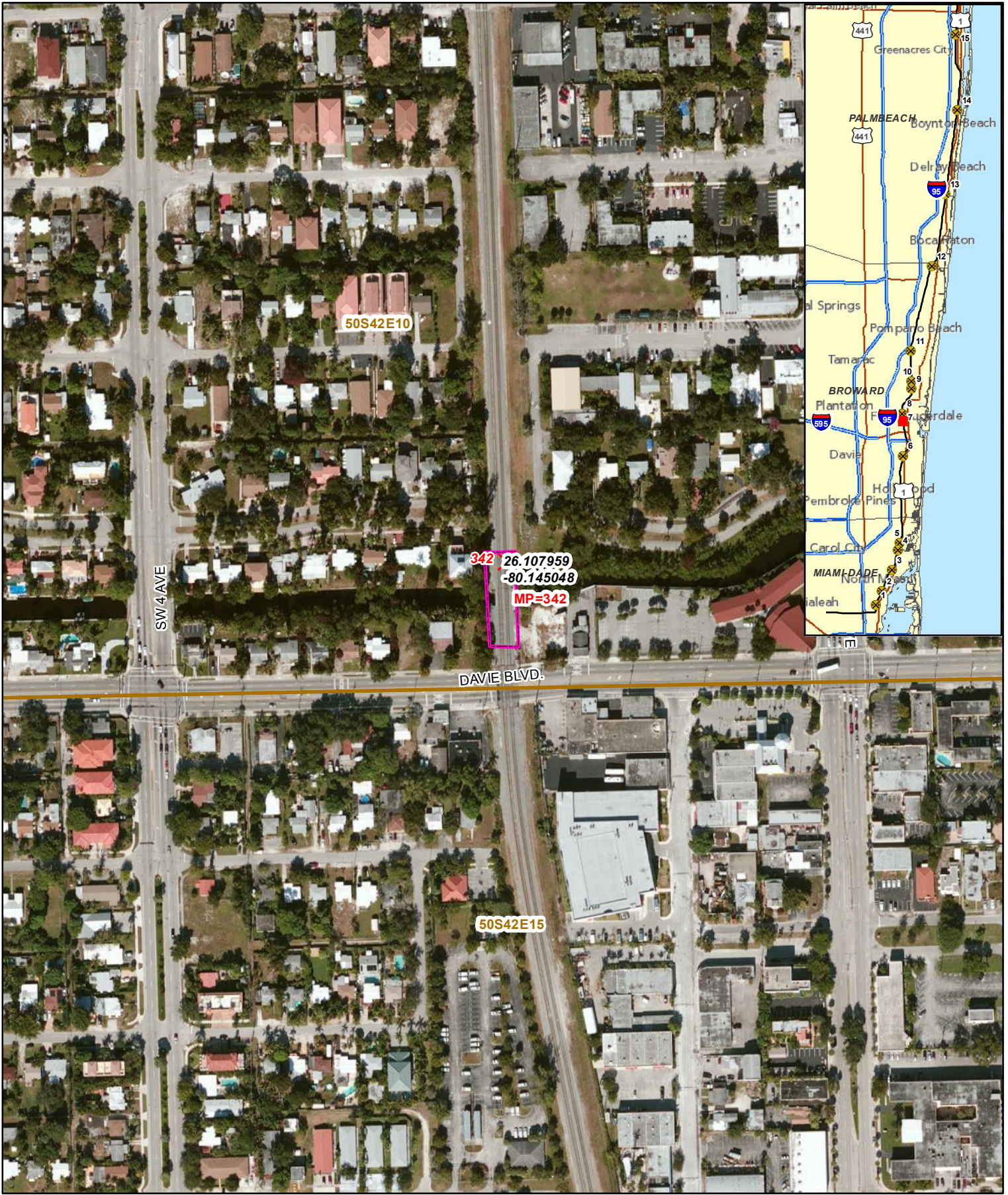
Figure
5

Path: V:\0-FECl_Ra\FGIS\FECl_GDB\WXD\Meetings\Lucien_Requests\Bridges_Aerial_8x11_Sel_15_MIAtoWestPalm_FlagDev.mxd



- ✕ Mile Posts
 - Rivers/Streams
 - Bridge Location
 - PLSS: Twn,Rng,Sec
- Data Sources: ESRI Imagery, NHD

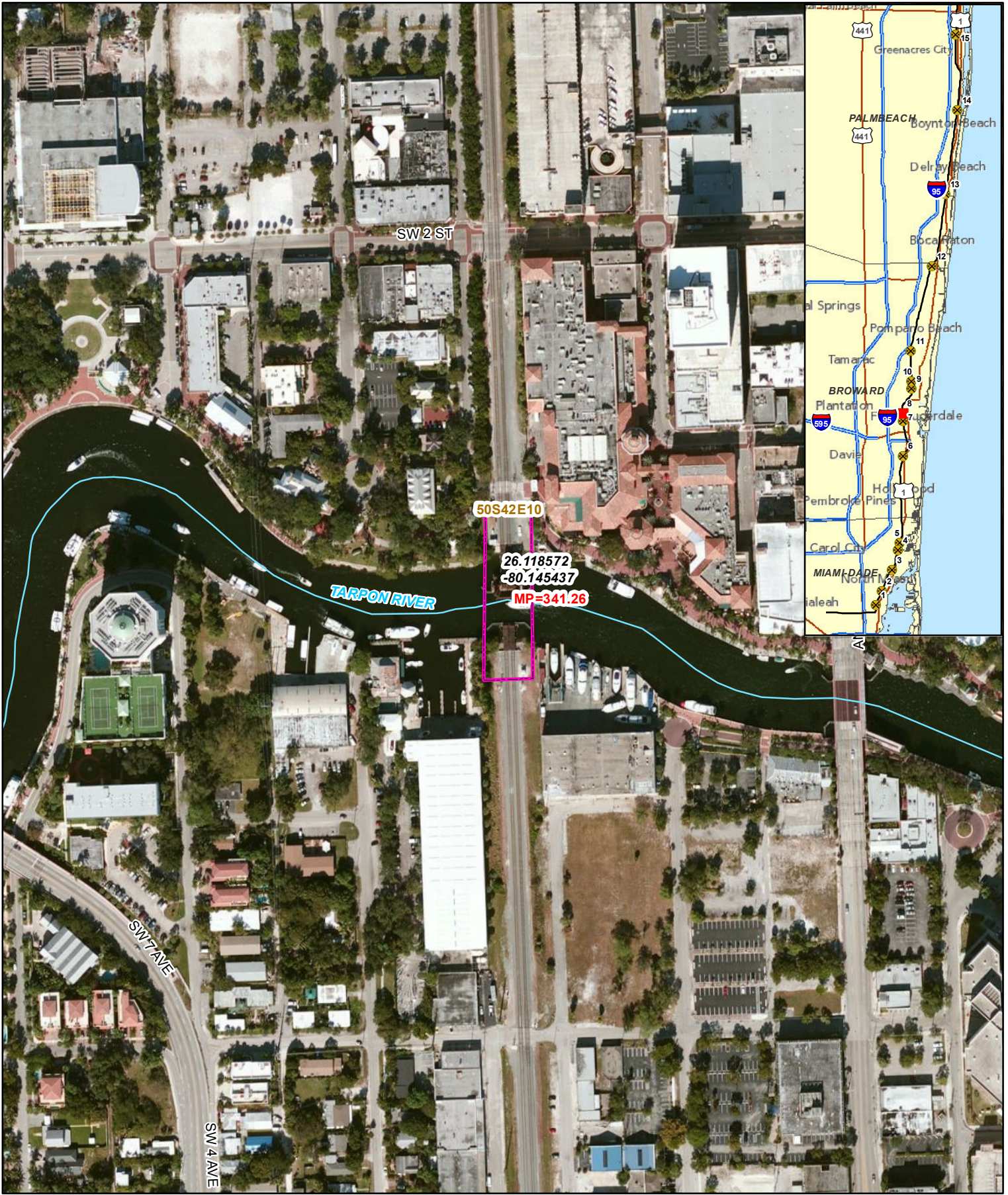
Passenger Rail Corridor Evaluation			
All Aboard Florida Project - Miami to West Palm - Study Map 6 of 15			
Drawn ARB	Date 09/10/2012		DANIA CUT OFF CANAL BROWARD COUNTY
Checked ARB	Date 09/10/2012		
<small>Path: V:\0-FCI_Ra\GIS\FECl_GDB\WXD\Meetings\Lucien_Requests\Bridges_Aerial_8x11_Sel_15_MIAtoWestPalm_FlagDev.mxd</small>			
Figure			6



- ✕ Mile Posts
 - Rivers/Streams
 - Bridge Location
 - PLSS: Twn,Rng,Sec
- Data Sources: ESRI Imagery, NHD

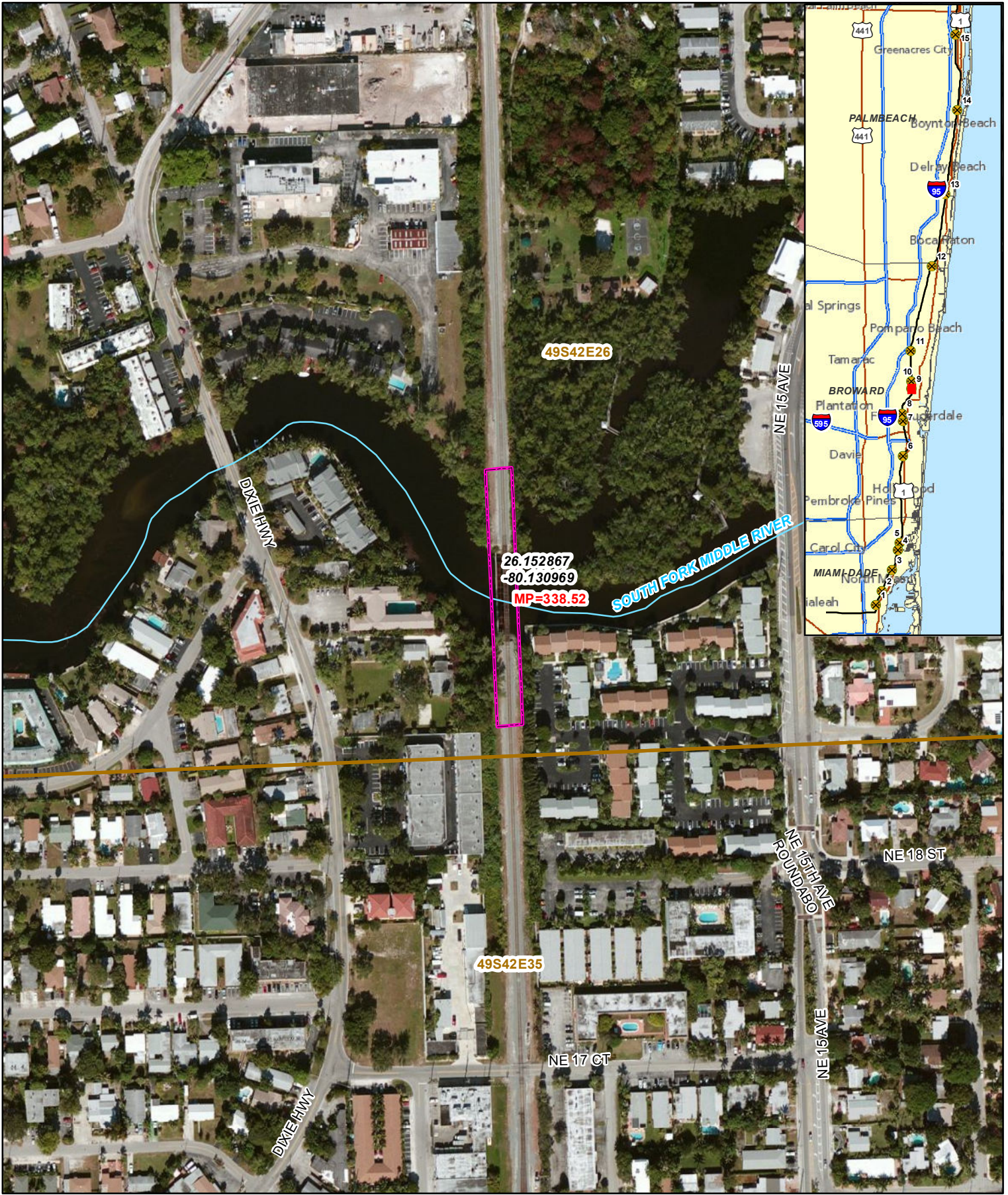
Passenger Rail Corridor Evaluation		
All Aboard Florida Project - Miami to West Palm - Study Map 7 of 15		
Drawn ARB	Date 09/10/2012	
Checked ARB	Date 09/10/2012	
TARPON RIVER BROWARD COUNTY		Figure 7

Path: V:\0-FCI_Ra\GIS\FCI_GDB\WXD\Meetings\Lucien_Requests\Bridges_Aerial_8x11_Sel_15_MIAtoWestPalm_FlagDev.mxd



- ✕ Mile Posts
 - Rivers/Streams
 - Bridge Location
 - PLSS: Twn,Rng,Sec
- Data Sources: ESRI Imagery, NHD

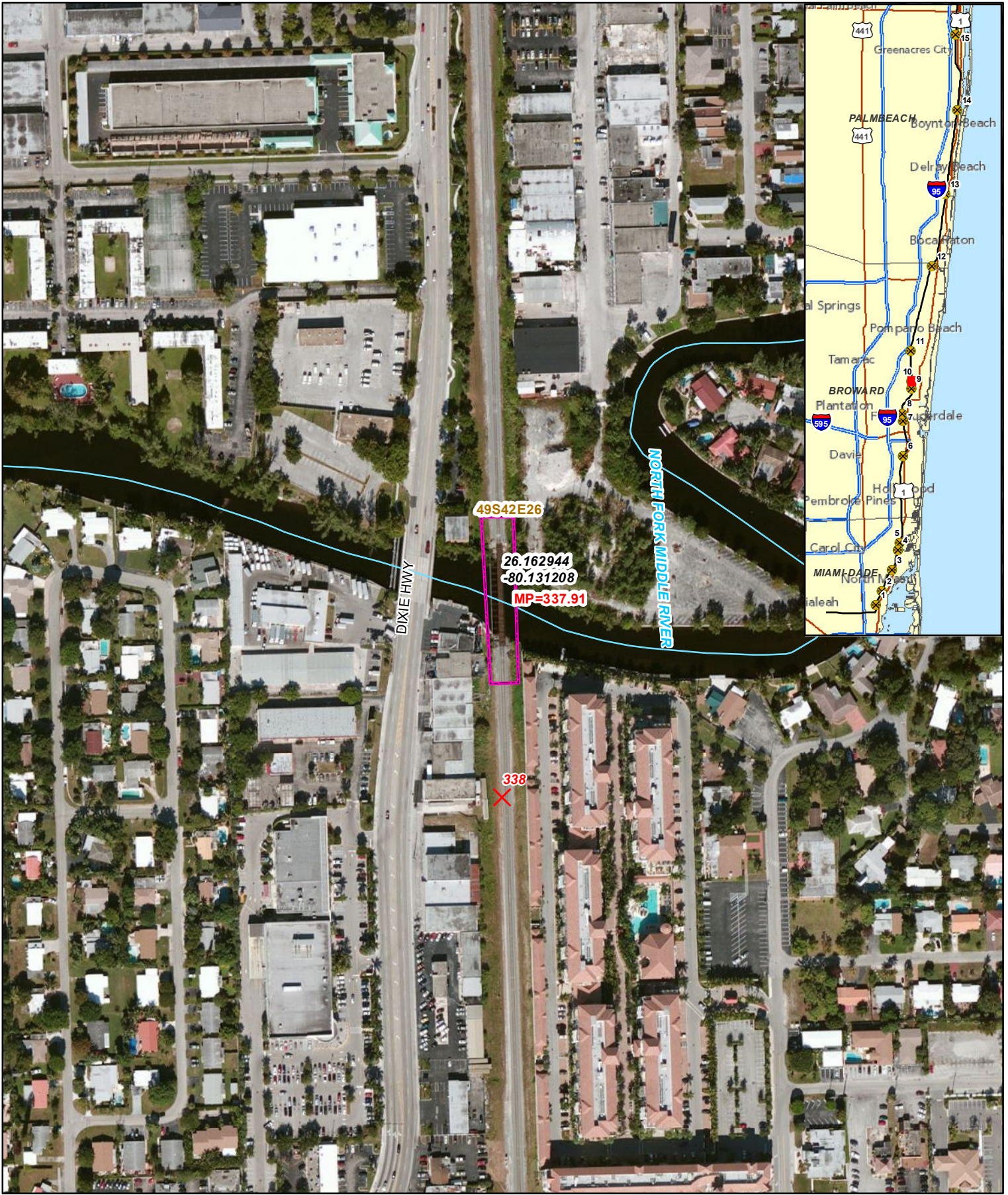
Passenger Rail Corridor Evaluation			
All Aboard Florida Project - Miami to West Palm - Study Map 8 of 15			
Drawn ARB	Date 09/10/2012		TARPON / NEW RIVER BROWARD COUNTY
Checked ARB	Date 09/10/2012		
<table border="1" style="width: 100%; border-collapse: collapse;"> <tr> <td style="width: 50%; padding: 5px;">Figure</td> <td style="width: 50%; padding: 5px;">8</td> </tr> </table>			
Figure	8		
Path: V:\0-FCI_Ra\FGIS\FE\CI_GDB\WXD\Meetings\Lucien_Requests\Bridges_Aerial_8x11_Sel_15_MIAtoWestPalm_FlagDev.mxd			



- ✕ Mile Posts
 - Rivers/Streams
 - Bridge Location
 - PLSS: Twn,Rng,Sec
- Data Sources: ESRI Imagery, NHD

Passenger Rail Corridor Evaluation			
All Aboard Florida Project - Miami to West Palm - Study Map 9 of 15			
Drawn ARB	Date 09/10/2012		S. FORK OF MIDDLE RIVER BROWARD COUNTY
Checked ARB	Date 09/10/2012		
<table border="1" style="width: 100%; border-collapse: collapse;"> <tr> <td style="width: 50%; padding: 5px;">Figure</td> <td style="width: 50%; padding: 5px;">9</td> </tr> </table>			
Figure	9		

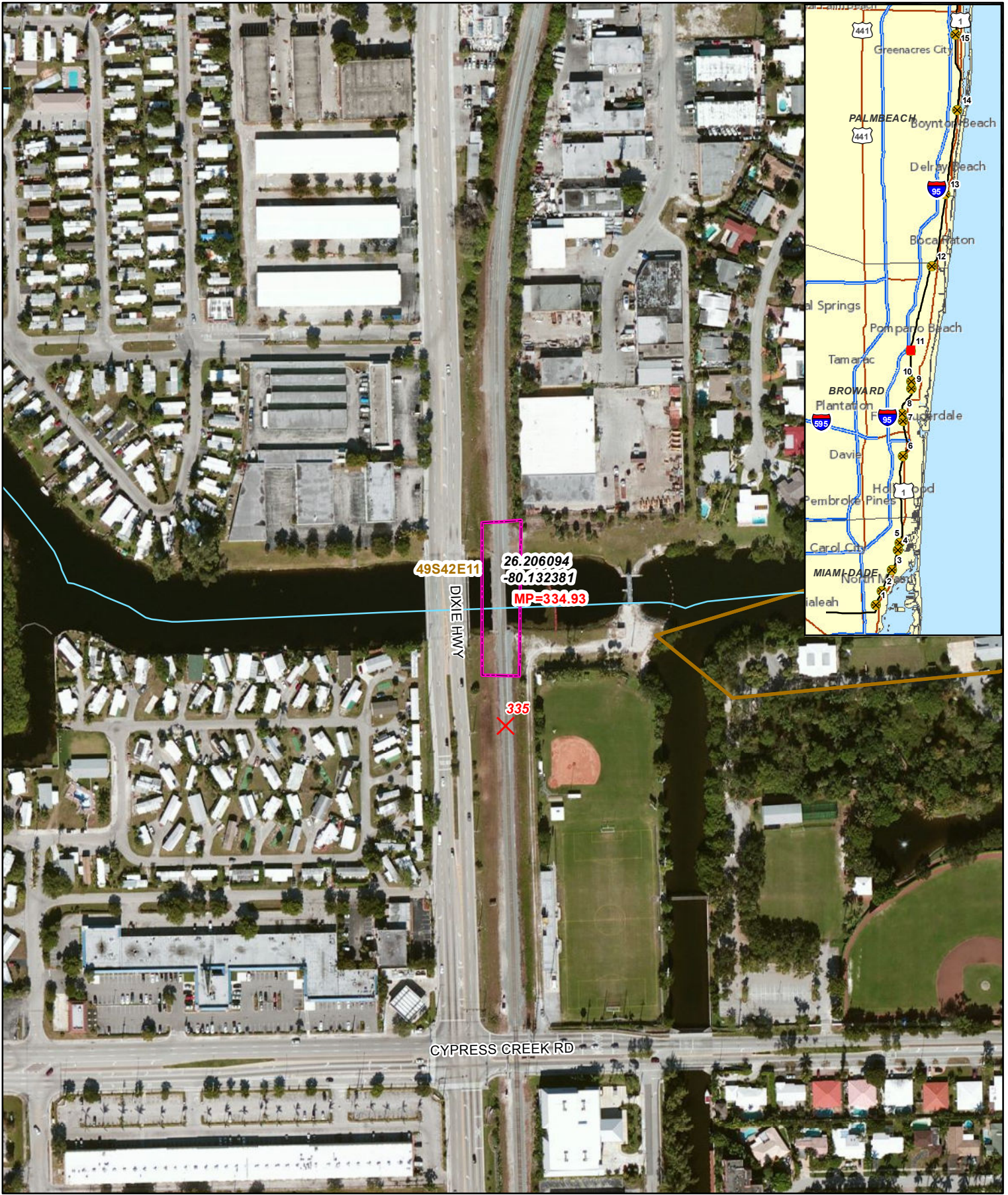
Path: V:\0-FCI_Ra\FGIS\FCI_GDB\WXD\Meetings\Lucien_Requests\Bridges_Aerial_8x11_Sel_15_MIAtoWestPalm_FlagDev.mxd



- ✕ Mile Posts
 - Rivers/Streams
 - Bridge Location
 - PLSS: Twn,Rng,Sec
- Data Sources: ESRI Imagery, NHD

Passenger Rail Corridor Evaluation			
All Aboard Florida Project - Miami to West Palm - Study Map 10 of 15			
Drawn	Date		N. FORK OF MIDDLE RIVER BROWARD COUNTY
ARB	09/10/2012		
Checked	Date	Figure 10	
ARB	09/10/2012		

Path: V:\0-FECl_Ra\FGIS\FECl_GDB\WXD\Meetings\Lucien_Requests\Bridges_Aerial_8x11_Set_15_MIAtoWestPalm_FlagDev.mxd



- ✗ Mile Posts
 - Rivers/Streams
 - Bridge Location
 - PLSS: Twn,Rng,Sec
- Data Sources: ESRI Imagery, NHD

Passenger Rail Corridor Evaluation	
All Aboard Florida Project - Miami to West Palm - Study Map 11 of 15	
Drawn	Date
ARB	09/10/2012
Checked	Date
ARB	09/10/2012
CYPRESS CREEK CANAL BROWARD COUNTY	
Figure 11	

Path: V:\0-FCI_Reg\GIS\FCI_GDB\WXD\Meetings\Lucien_Requests\Bridges_Aerial_8x11_Set_15_MIAtoWestPalm_FlagDev.mxd



- ✕ Mile Posts
 - Rivers/Streams
 - Bridge Location
 - PLSS: Twn,Rng,Sec
- Data Sources: ESRI Imagery, NHD

Passenger Rail Corridor Evaluation		
All Aboard Florida Project - Miami to West Palm - Study Map 12 of 15		
Drawn ARB	Date 09/10/2012	
Checked ARB	Date 09/10/2012	
<div style="display: flex; justify-content: space-between;"> HILLSBORO RIVER BROWARD COUNTY </div>		
<div style="display: flex; justify-content: space-between;"> Figure 12 </div>		

Path: V:\0-FCI_Ra\GIS\FCI_GDB\WXD\Meetings\Lucien_Requests\Bridges_Aerial_8x11_Set_15_MIAtoWestPalm_FlagDev.mxd



- ✕ Mile Posts
 - Rivers/Streams
 - Bridge Location
 - PLSS: Twn,Rng,Sec
- Data Sources: ESRI Imagery, NHD

Passenger Rail Corridor Evaluation		
All Aboard Florida Project - Miami to West Palm - Study Map 13 of 15		
Drawn ARB	Date 09/10/2012	
Checked ARB	Date 09/10/2012	
<div style="display: flex; justify-content: space-between;"> HIDDEN VALLEY (C-15) Figure </div> <div style="display: flex; justify-content: space-between;"> PALM BEACH COUNTY 13 </div>		
<small>Path: V:\0-FCI_Reg\GIS\FECl_GDB\MXD\Meetings\Lucien_Requests\Bridges_Aerial_8x11_Set_15_MIAtoWestPalm_FlagDev.mxd</small>		



- ✕ Mile Posts
 - Rivers/Streams
 - Bridge Location
 - PLSS: Twn,Rng,Sec
- Data Sources: ESRI Imagery, NHD

Passenger Rail Corridor Evaluation			
All Aboard Florida Project - Miami to West Palm - Study Map 14 of 15			
Drawn ARB	Date 09/10/2012		BOYNTON BEACH CANAL PALM BEACH COUNTY
Checked ARB	Date 09/10/2012		
<table border="1" style="width: 100%; border-collapse: collapse;"> <tr> <td style="width: 50%; padding: 5px;">Figure 14</td> </tr> </table>			
Figure 14			

Path: V:\0-FECl_Ra\FIGS\FECl_GDB\WXD\Meetings\Lucien_Requests\Bridges_Aerial_8x11_Set_15_MIAtoWestPalm_FlagDev.mxd



- ✕ Mile Posts
 - Rivers/Streams
 - Bridge Location
 - PLSS: Twn,Rng,Sec
- Data Sources: ESRI Imagery, NHD

Passenger Rail Corridor Evaluation	
All Aboard Florida Project - Miami to West Palm - Study Map 15 of 15	
Drawn ARB	Date 09/10/2012
Checked ARB	Date 09/10/2012
<div style="display: flex; align-items: center;"> <div style="margin-right: 10px;">N</div> <div style="flex-grow: 1;"> <div style="display: flex; justify-content: space-between; width: 100%;"> 0 100 200 </div> <div style="border-top: 1px solid black; width: 100%;"></div> <div style="text-align: center; font-size: small;">1" = 200 Feet</div> </div> </div>	
WEST PALM BEACH CANAL (C-51) PALM BEACH COUNTY	
Figure 15	

Path: V:\0-FE\CI_Ra\GIS\FE\CI_GDB\WXD\Meetings\Lucien_Requests\Bridges_Aerial_8x11_Sel_15_MIAtoWestPalm_FlagDev.mxd