

2014 FRA

Rail Program Delivery



Kyle Grading

**Transportation Industry Analyst/
Regional Planner
Federal Railroad Administration**

2014 FRA Rail Program Delivery

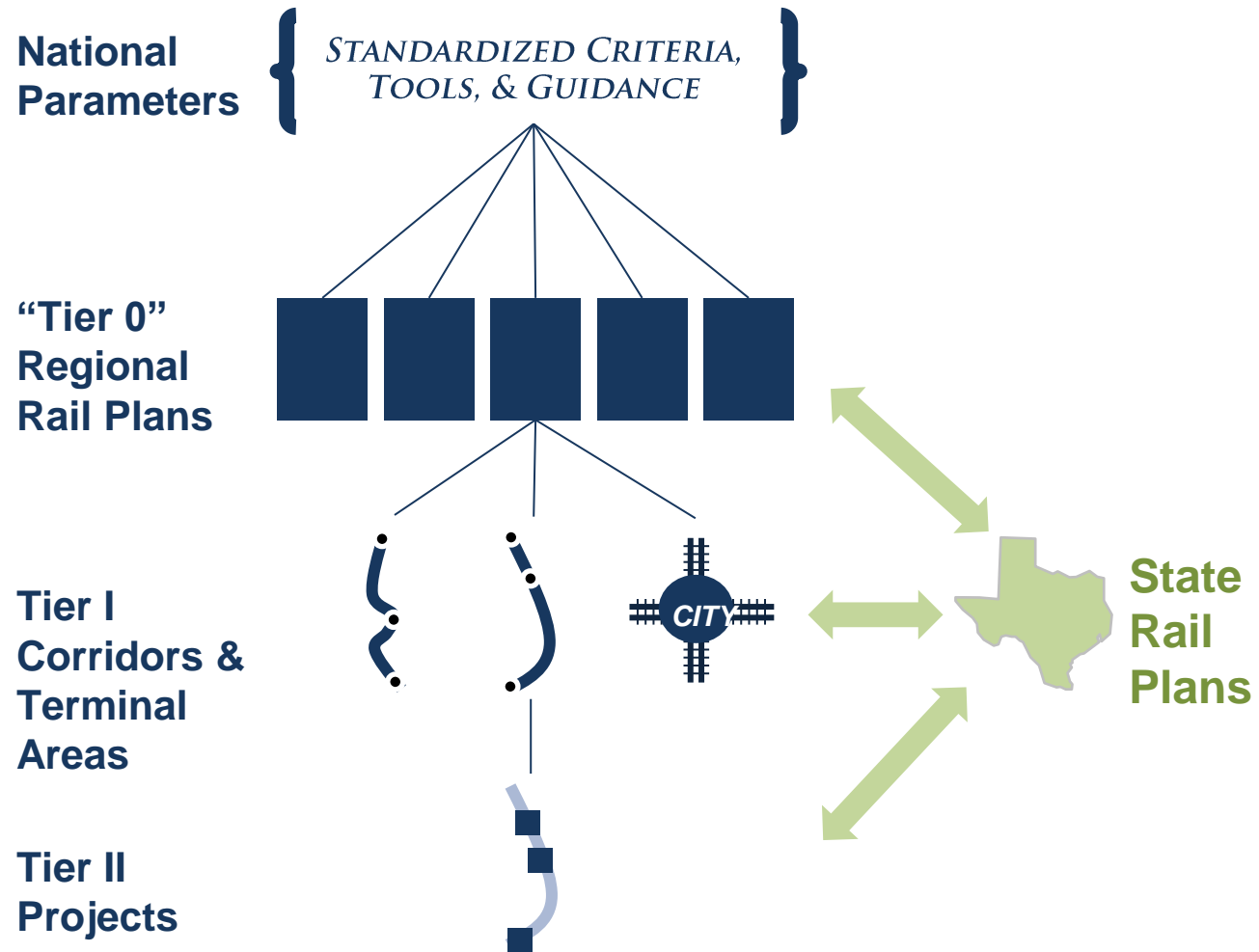


FRA's Planning Framework

FRA Planning Framework

- **National Rail Planning**
- **Regional (Multi-state) Planning**
- **Corridor Planning**
- **State Rail Plans**

FRA Planning Framework

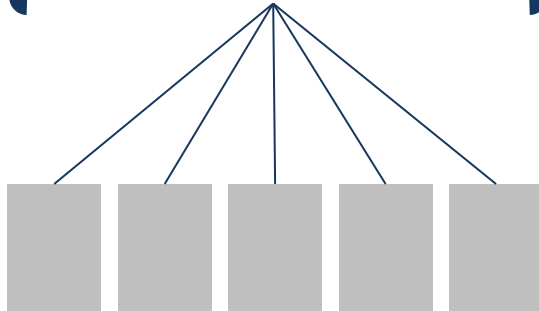


National Planning

National Parameters

*STANDARDIZED CRITERIA,
TOOLS, & GUIDANCE*

“Tier 0”
Regional
Rail Plans



Tier I
Corridors &
Terminal
Areas

Tier II
Projects

Contents

- Criteria for federal investment
- Models, methodologies, & guidance

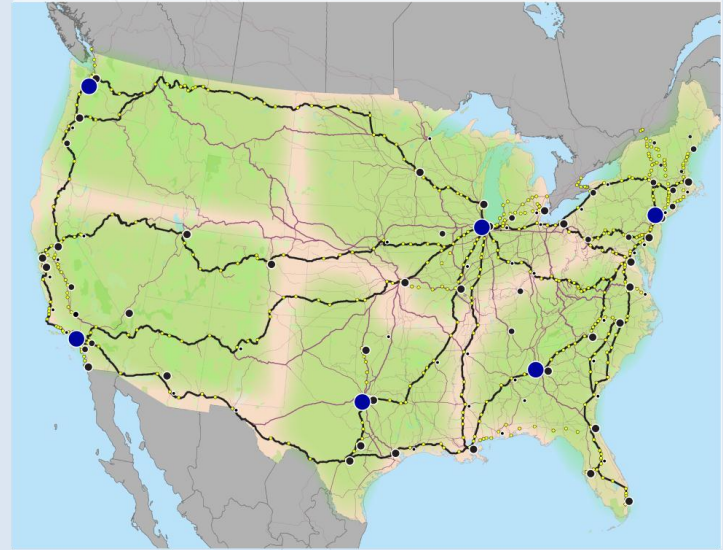
NEPA

Guidance for project sponsors

FRA Role

Establish investment policies and develop models/guidance

What does the map look like?

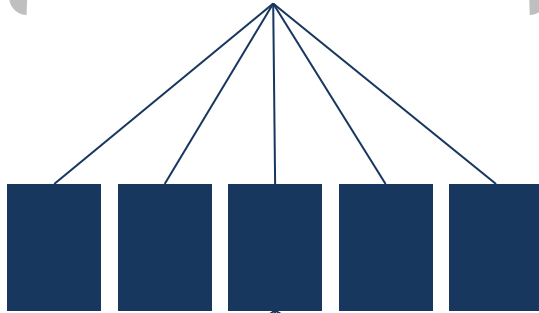


Regional Planning

National
Parameters

*STANDARDIZED CRITERIA,
TOOLS, & GUIDANCE*

“Tier 0”
Regional
Rail Plans



Tier I
Corridors &
Terminal
Areas

Tier II
Projects

Contents

- Regional network vision
- Regional service plan
- Institutional/financial plans

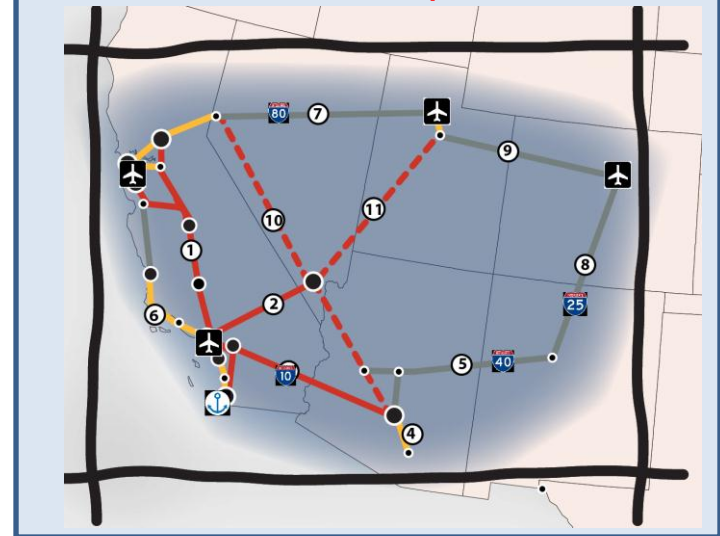
NEPA

n/a

FRA Role

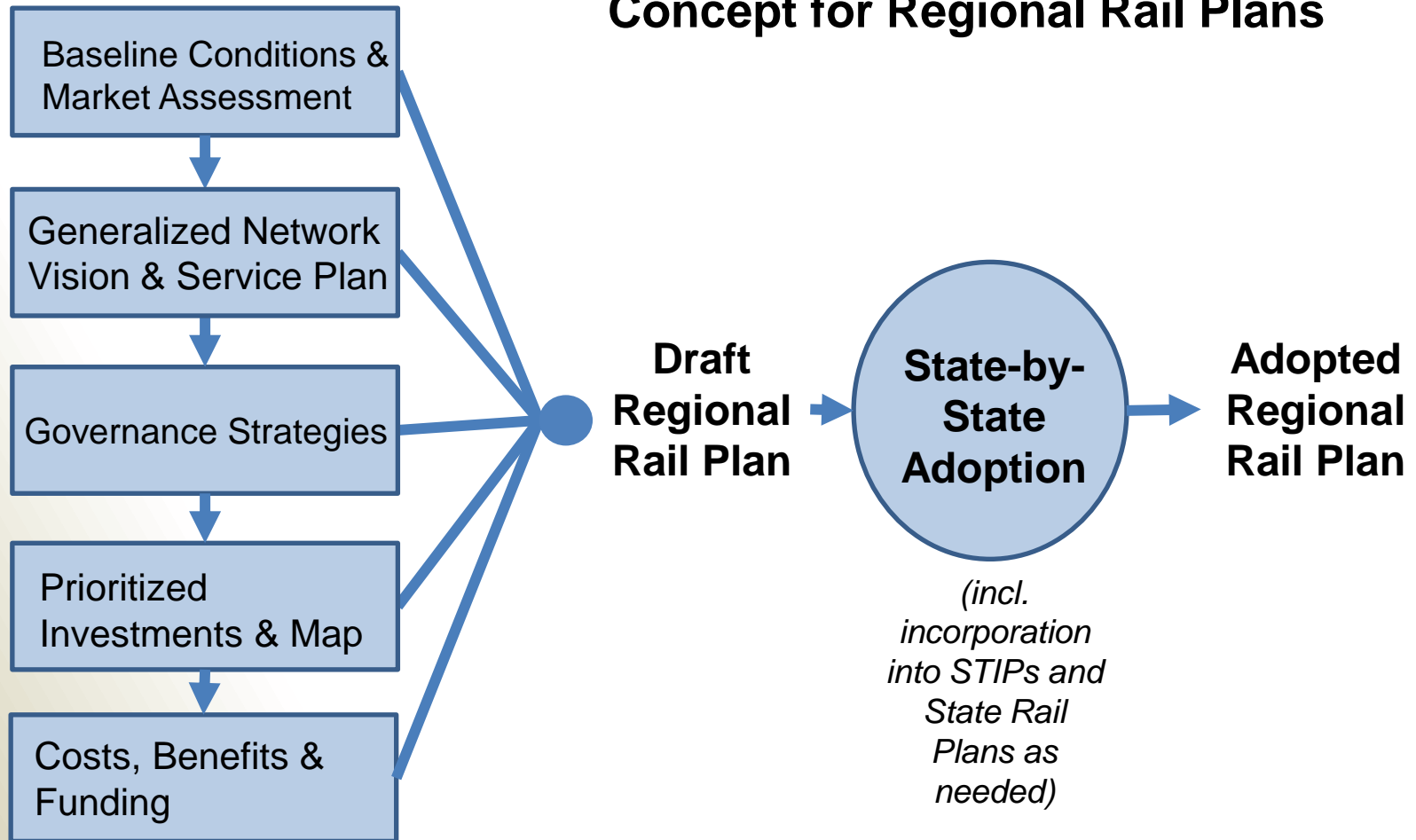
- Provide toolkits and best practices
- Facilitate cross-border institutional relationships
- Fund projects consistent with adopted regional plans

What does the map look like?



Regional Planning

Concept for Regional Rail Plans



Corridor Planning (Tier I)

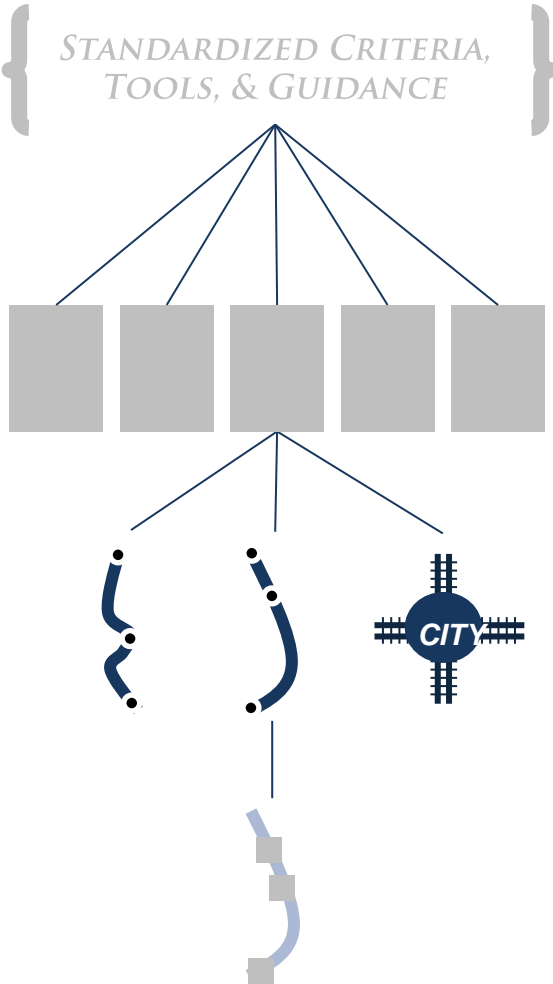
National
Parameters

*STANDARDIZED CRITERIA,
TOOLS, & GUIDANCE*

“Tier 0”
Regional
Rail Plans

Tier I
Corridors &
Terminal
Areas

Tier II
Projects



Contents

- Corridor alignments
- Terminal area plans
- Detailed service plans

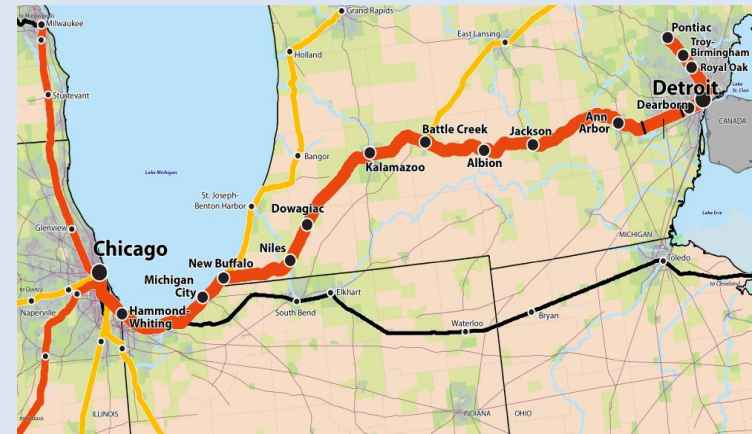
NEPA

Service-level (Tier I)

FRA Role

- Provide service development planning and NEPA guidance
- Review/approve grant or loan deliverables

What does the map look like?



Corridor Planning (Tier I)

- **Technical analysis of rail service**
- **Consistent w/ NEPA P&N**
- **Progressively narrows to reasonable alternatives using tools to assess:**
 - Engineering feasibility
 - Ridership
 - Operational Impacts
 - Costs and Public Benefits
- **Leads to a Passenger Rail Corridor Investment Plan (PRCIP), including:**
 - NEPA Review and Service Development Plan

Service Development Plan

- **Prepared at the end of planning phase of PRCIP**
- **Primary objectives of SDP are to:**
 - Demonstrate rationale for service
 - Address Purpose and Need identified through NEPA
 - Summarize technical analysis for proposed alternative
 - Demonstrate operational and financial feasibility
 - Describe implementation phasing of Service Development Program

Project Dev. (Tier II)

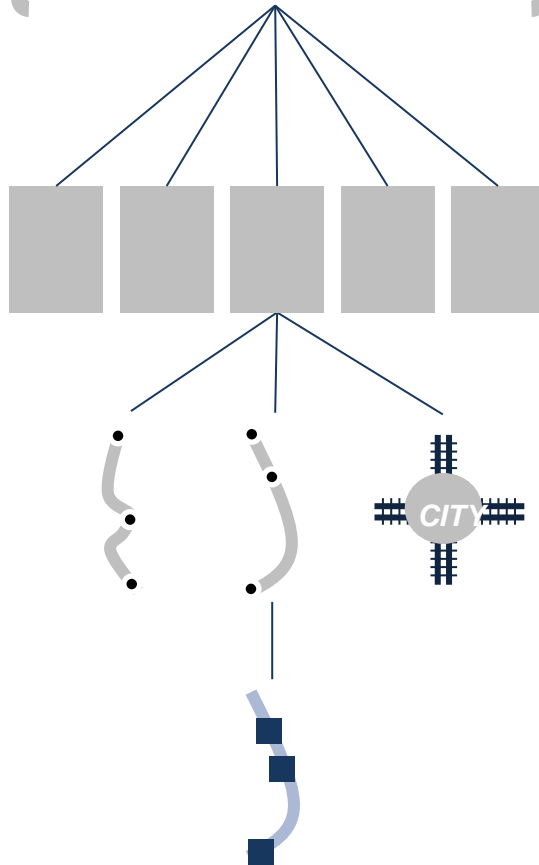
National
Parameters

*STANDARDIZED CRITERIA,
TOOLS, & GUIDANCE*

“Tier 0”
Regional
Rail Plans

Tier I
Corridors &
Terminal
Areas

Tier II
Projects



Contents

- Project-level engineering
- Construction/delivery plans
- Project management plans

NEPA

Project-level (Tier II)

FRA Role

- Provide project delivery guidance
- Review/approve grant or loan deliverables

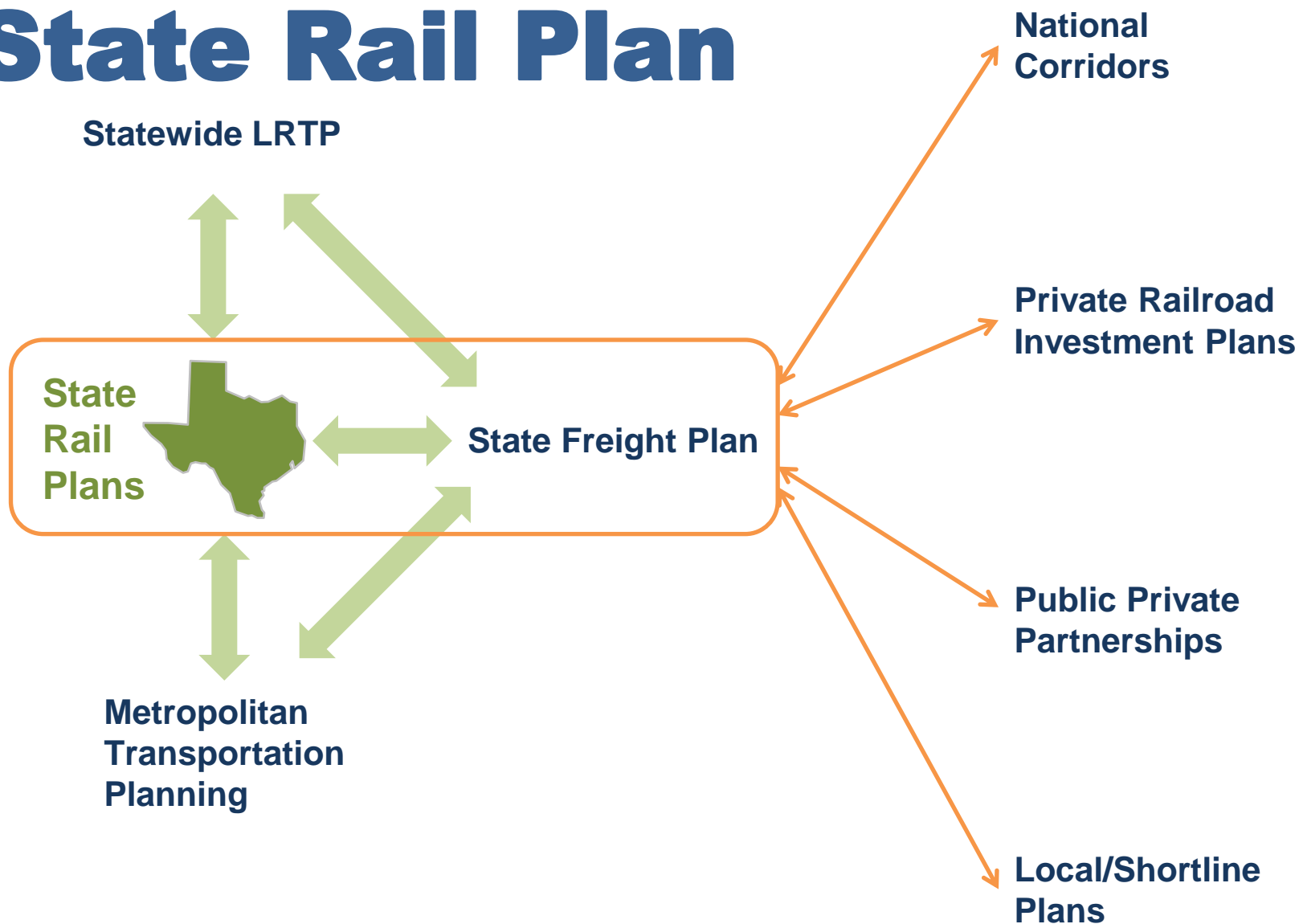
What does the map look like?



State Rail Plan

- **SRPs are key components of a comprehensive, multi-modal planning approach that guides public investment in the transportation network**
- **Reflect States' visions for passenger and freight rail and harmonize individual studies, plans and projects**
- **Define rail's role in multimodal network**
 - Process by which States can develop strategies and policies for rail service
 - Opportunity to show the full extent of State's rail programs – including costs and benefits
 - Signal to lawmakers and FRA about State's goals

State Rail Plan



State Rail Plans & Funding

- **States must develop SRPs based on FRA guidelines to be eligible for HSIPR funding:**
 - Section 301 grants for corridor capital assistance
 - Section 302 grants for congestion reduction
 - Section 501 grants for high-speed rail corridors

Federal Role in SRPs

- **FRA's role in State rail planning is to:**
 - Coordinate SRPs with national and regional rail planning efforts
 - Provide technical assistance, guidance, analytic tools, and training to support State rail planning
- **FRA reviews and accepts SRPs that are approved by the States**
- **SRPs will inform national rail planning and FRA budget/reauthorization proposals**