

2014 FRA

Rail Program Delivery

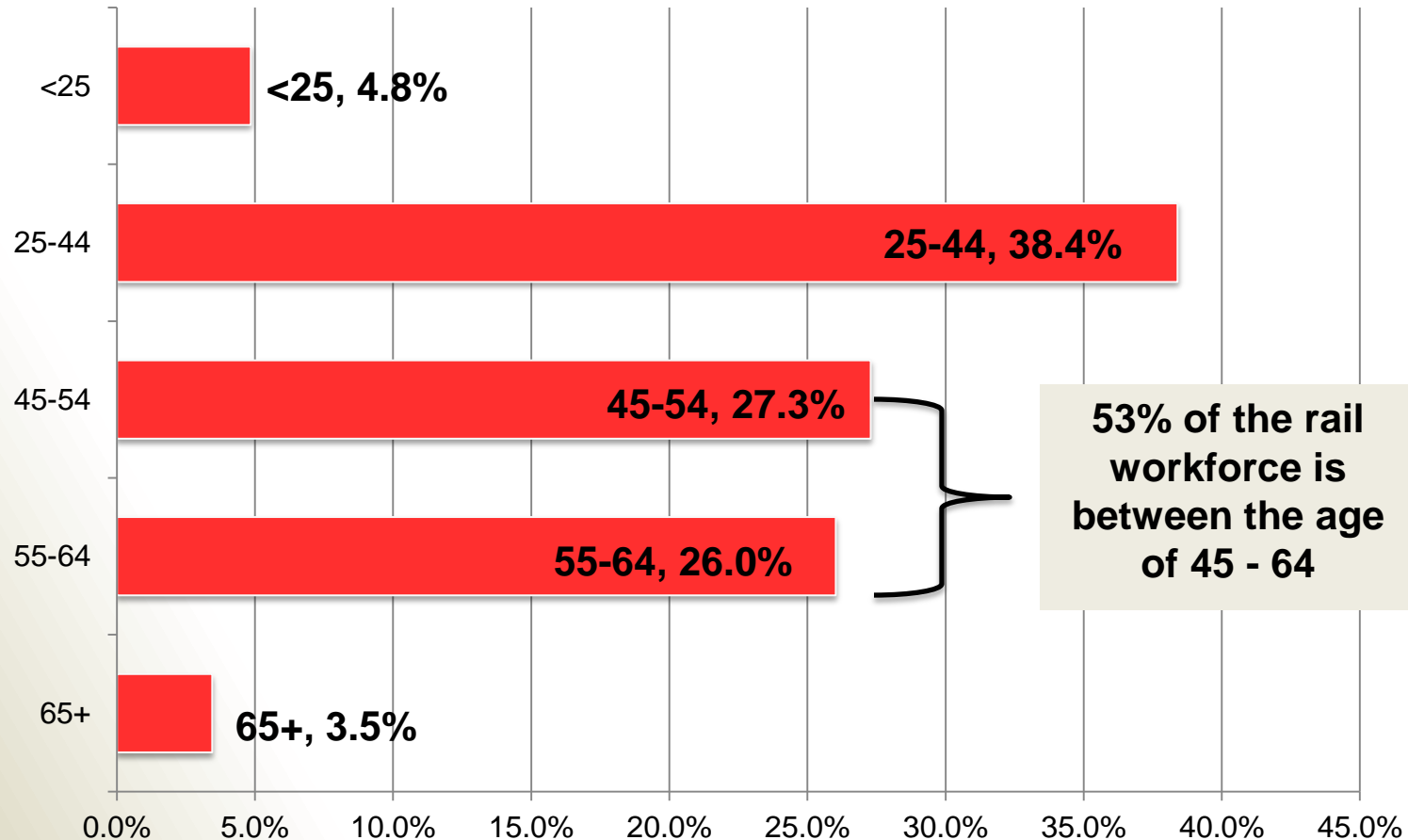


Daniel Knoté (Dan)
Staff Director Passenger Rail
Division – Office of Safety

Contact Information:

- Email: daniel.knote@dot.gov
- Phone: 631-965-1827

Rail: Workforce Age Distribution (2014)



About Passenger Rail Division



2014 FRA

Rail Program Delivery



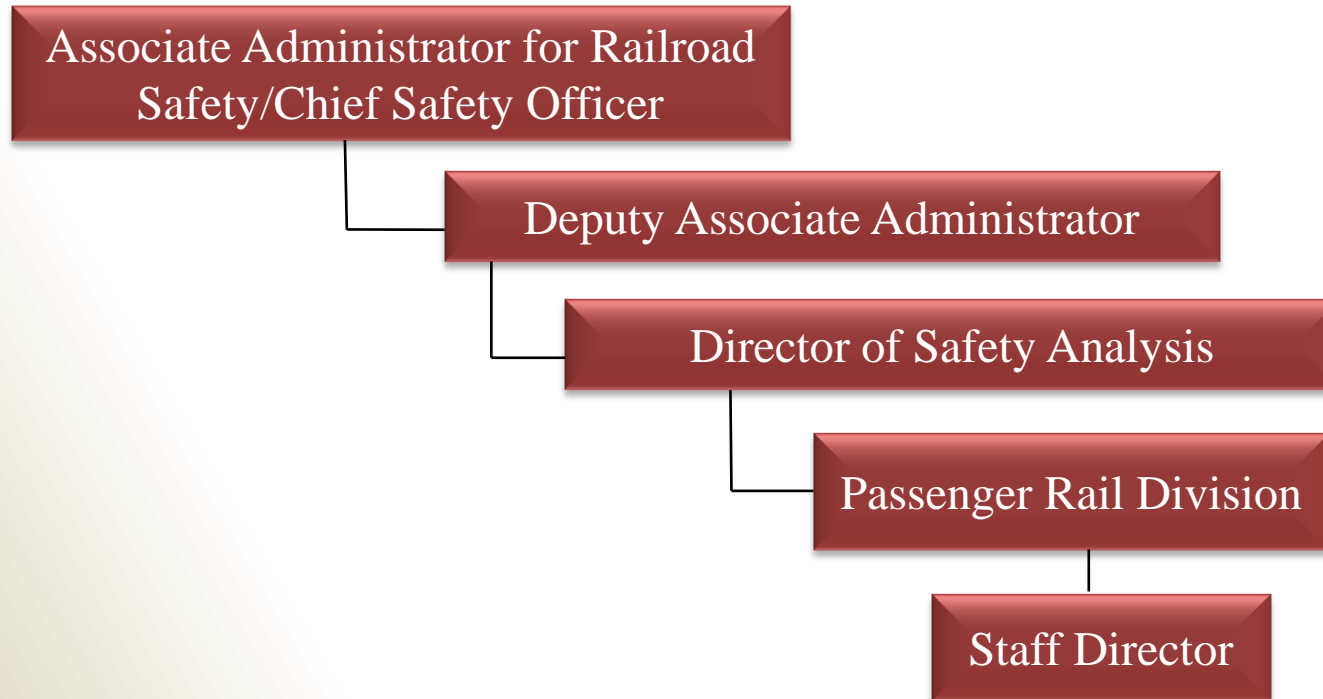
**FRA - Office of Safety
Passenger Rail Division**



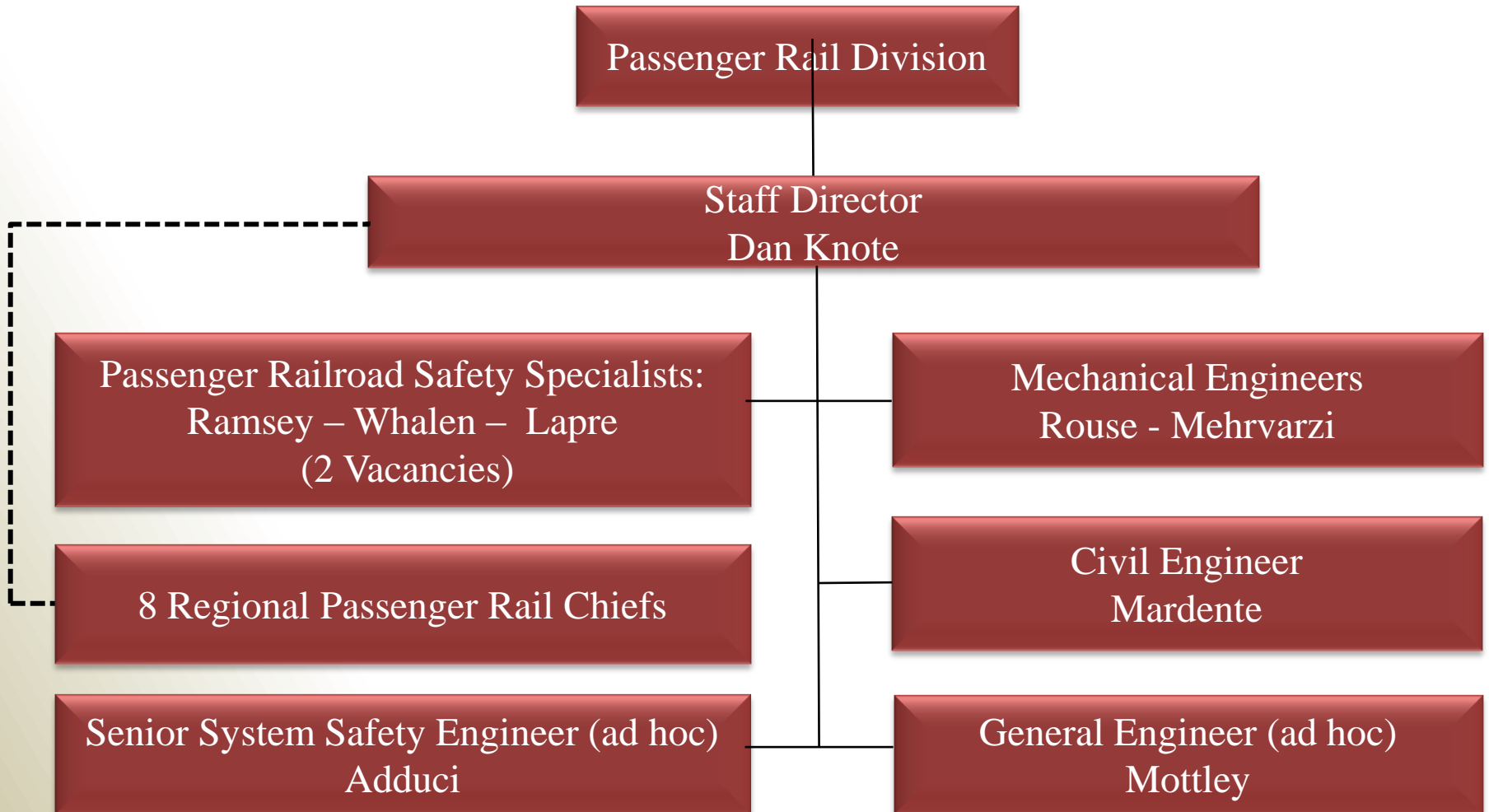
About Passenger Rail Division

- FRA's Passenger Rail Division provides **early intervention with** technical expertise and direction in the development and implementation of rail safety programs applicable to **new and existing** Commuter and Passenger Railroads.
- Provides technical expertise and direction in the following areas: System Safety; Passenger Train Emergency Preparedness; Shared Use; New Start Commuter and Passenger Railroads; Procurement of Rolling Stock; and High-Speed Rail.
- Serves as the primary link between the Office of Safety and the Program Delivery Division.

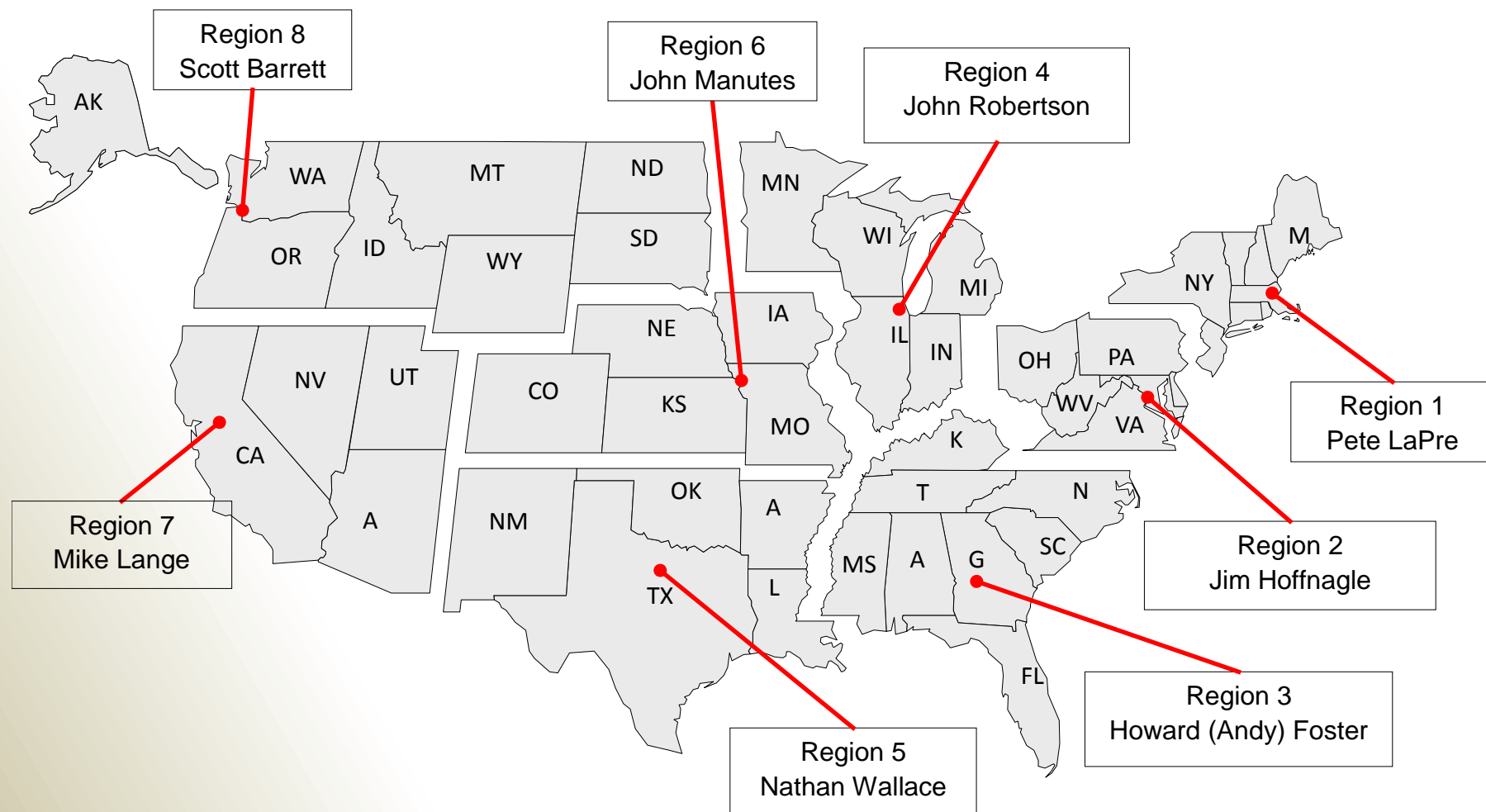
FRA-Office of Safety



PRD Overview



Office of Safety – Regional Office Map (with Chief Rail Inspectors)
Program Coordinator: John Mardente, Passenger Rail Division



Office of Safety Involvement

At what point in project development should the Office of Safety, Passenger Rail Division become involved??

Office of Safety Involvement

- **Application Review/Obligations**
 - HSIPR Grant Applications/
- **Planning**
 - State Rail Plans
 - Service Development
- **NEPA**
 - Environmental Assessments
 - Environmental Impact Statements
- **Preliminary Engineering**
 - System Safety Plan (including Preliminary Hazard Analysis)
 - Training and Technical Assistance
- **Final Design**
 - System Safety Plan (including Final Hazard Analysis)
 - Training and Technical Assistance
- **Construction**
 - Field Inspections
 - Certifications

Sound Wall Design



How many potential hazards can you identify in this picture?



Passenger Routing



Mini High Platform



Station Design

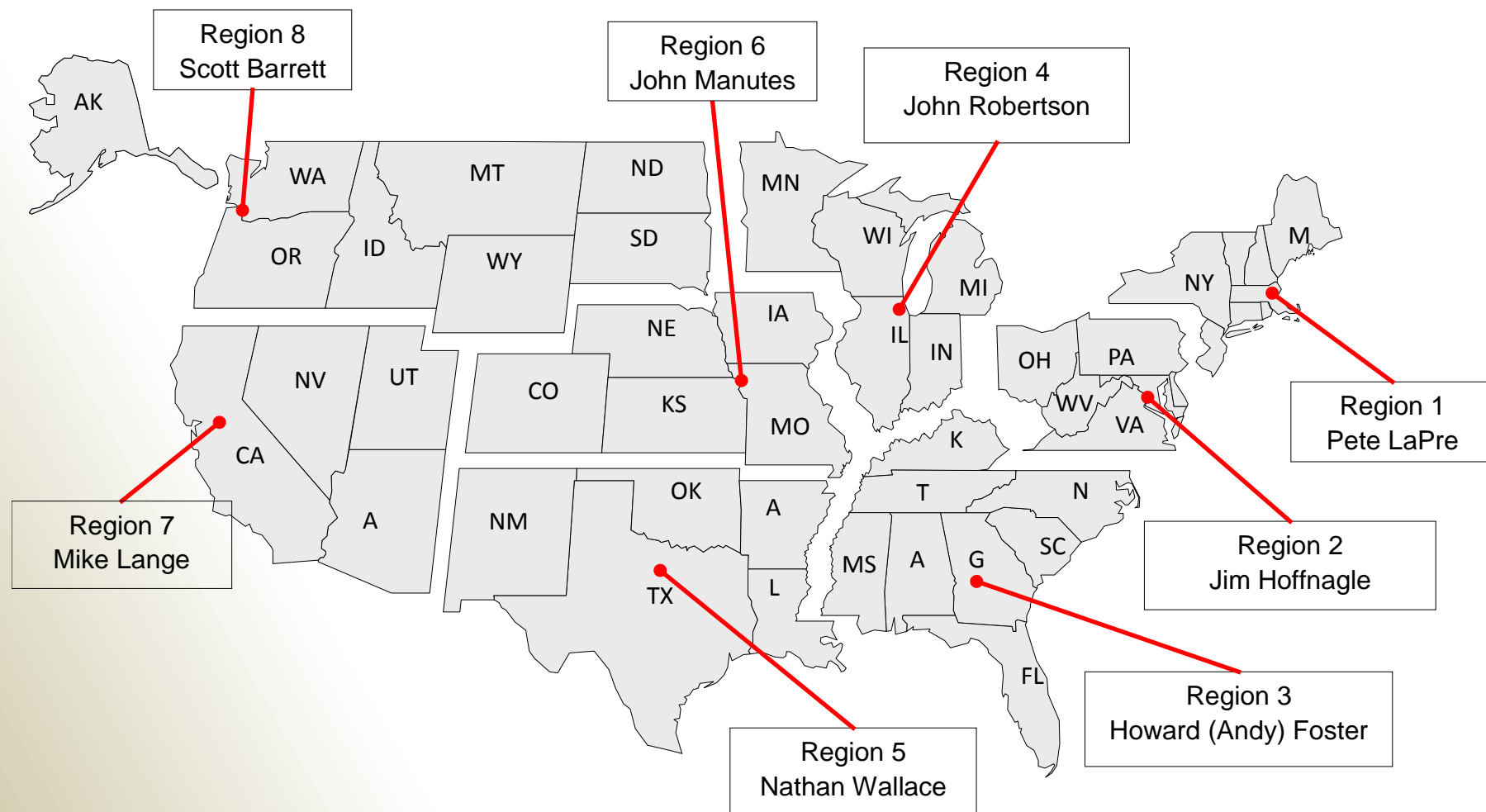


Program Delivery Roles & Responsibilities Office of Safety

Passenger Rail Division (PRD):

- **PRD, Safety Specialist serve on RPD Regional Project Teams:**
 - Participate in grant & loan reviews, as needed;
 - Identify safety critical elements & coordinate activities with RRS Headquarters & Regional Offices;
 - Support Regional Passenger Chief Inspectors on review/ inspection of projects;
- **Regional Passenger Rail Chiefs:**
 - Participate on Regional Teams;
 - Attend meetings, representing the Regional Administrator;
 - Review grants & loans as needed;
 - Coordinate regional project field inspections

Office of Safety – Regional Office Map (with Chief Rail Inspectors)
Program Coordinator: John Mardente, Passenger Rail Division



Program Delivery Roles & Responsibilities Office of Safety

Passenger Rail Division (PRD):

- High Speed Rail Programs:

- RRS, Primary Point of Contact: Fred Mottley;
- Projects under way:
 - California;
 - Amtrak NEC;
 - ExpressWest (currently on Hold);
 - Texas: Texas Central High Speed Rail (TCR) privately funded Rail

-Equipment Programs:

- RRS Primary Point of Contact: Devin Rouse;
- Projects underway:
 - PRIIA, Caltrans/ IDOT; Passenger Rail Division: Sean Mehrvarzi
 - Amtrak next generation Acela

Program Delivery Roles & Responsibilities Office of Safety

Passenger Rail Division (PRD):

- **Critical Safety Concerns:**
 - System Safety/ Hazard Analysis:
 - System Safety Plans are a requirement of most Grants;
 - Hazard Analysis is a requirement for all projects;
 - Hazard Analysis begins at Preliminary Design.
 - Passenger Station Design & Location:
 - Hazard Analysis Required;
 - ADA Compliance;
 - GAP Management;
 - Located on Tangent Track;

Program Delivery Roles & Responsibilities Office of Safety

Passenger Rail Division (PRD):

- **Critical Safety Concerns:**
 - **Grade Crossings:**
 - Eliminate when possible;
 - Hazard Analysis in the design stage;
 - **Inspection/ Testing:**
 - Regional Chief coordinates regional inspections, during construction & final compliance inspection at project conclusion;
 - **Testing Scheduling:** When testing is required scheduling must be coordinate to ensure regional &/ or headquarter staff has time to review documents &, where necessary observe tests.

Program Delivery Roles & Responsibilities Office of Safety

Passenger Rail Division (PRD):

- **Critical Safety Concerns:**
 - **Roadway Worker Protection (RWP):**
 - RWP certainly a Major Safety Requirement;
 - RWP Program Compliance: Regional Chief will coordinate review/ approval/ inspection.
- **New Start Passenger Railroads (Example, Quad City):**
 - When a project involves an entirely New Passenger Service or an extensive expansion of existing service, a New Start Team is assembled;
 - New Start Project require 12 to 36 months to bring the service on line.



Passenger Rail Division - New Start Worksheet

Railroad: <input style="width: 95%;" type="text"/>	Contractor(s): <input style="width: 95%;" type="text"/>
Passenger Rail Division - Project Manager: <input style="width: 95%;" type="text"/>	Regional - Project Manager: <input style="width: 95%;" type="text"/>

Done	Item #	Discipline	Part	Description	Date Required	RR Person Responsible	FRA Person Responsible	RR Submission	FRA Status	Accepted/Complete	Comments
<input type="checkbox"/>	1	Civil Rights	37.42(a)	At stations approved for entry into final design or that begin construction or alteration of platforms individuals with disabilities must have access to all accessible cars - DOT Guidance...	02/01/2012 Startup						
<input type="checkbox"/>	2	Civil Rights	37.42(b)	For new or altered stations serving commuter with no freight...must be met by providing level-entry boarding to all accessible cars - DOT Guidance...	02/01/2012 Startup						
<input type="checkbox"/>	3	Civil Rights	37.42(d)(2)	Plans for meeting the performance standard at new or altered stations where track adjacent to the platform is shared with freight traffic must be submitted on a station-by-station basis - DOT Guidance...	02/01/2012 Startup						
<input type="checkbox"/>	4	Crossing	222.39	Quiet Zones...Public authority application to FRA...	N/A						
<input type="checkbox"/>	5	Crossing	222.43	Notice of Intent shall be mailed...The public authority shall provide written notification to continue/establish quiet zone...	60 Days Before						
<input type="checkbox"/>	6	Industrial Hygienist	227.103(a)(1)	A railroad shall develop and implement a noise monitoring program - FRA Handbook...	Startup						
<input type="checkbox"/>	7	Industrial Hygienist	227.107(a)	The railroad shall administer a continuing, effective hearing conservation program...	Startup						
<input type="checkbox"/>	8	Industrial Hygienist	227.109(a)	Each railroad shall establish and maintain an audiometric testing program...	Startup						

Program Delivery Roles & Responsibilities Office of Safety

Passenger Rail Division (PRD):

- **Critical Safety Concerns:**

- Early; Early; Early engagement with FRA/ Office of Safety;
- Consistent Line of Communication:

- **Communication Process, specific to FRA Grant Projects:**

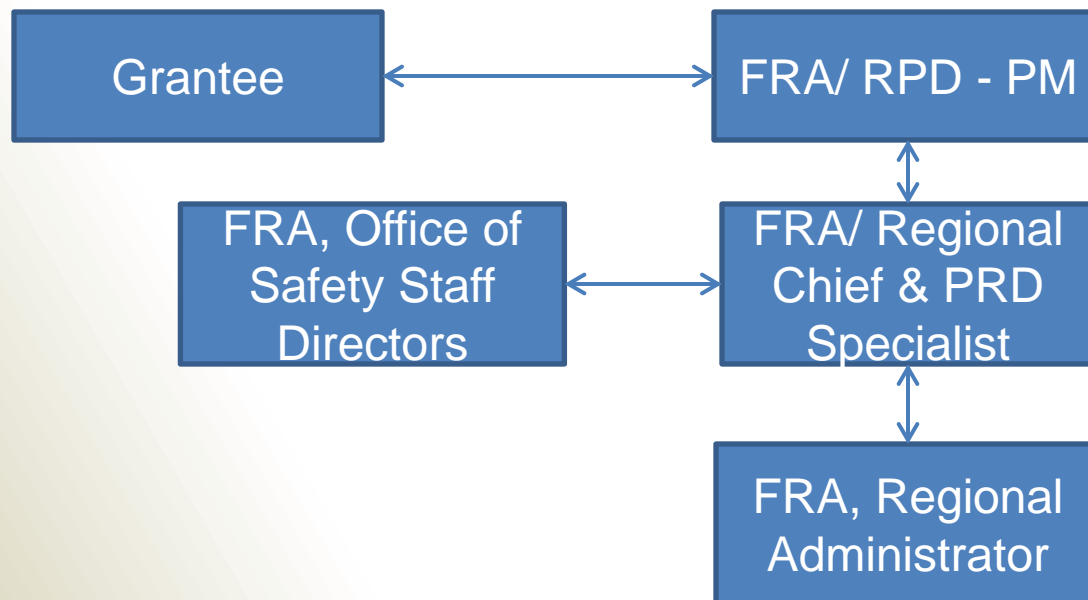
- All initial Communications:



Program Delivery Roles & Responsibilities Office of Safety

Passenger Rail Division (PRD):

- Communication Process, specific to FRA Grant Projects:



Questions??

